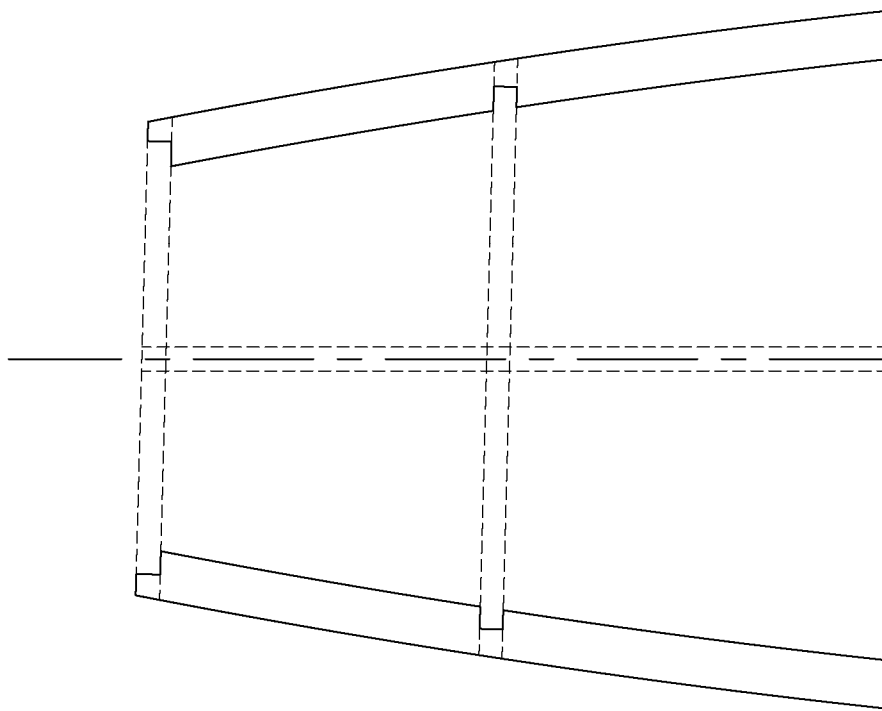
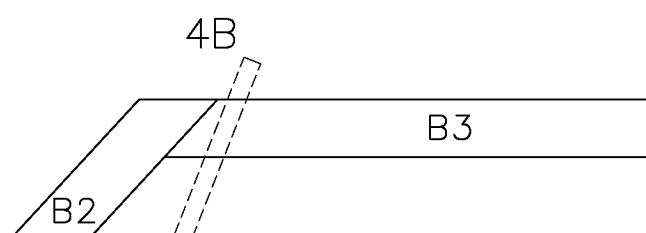
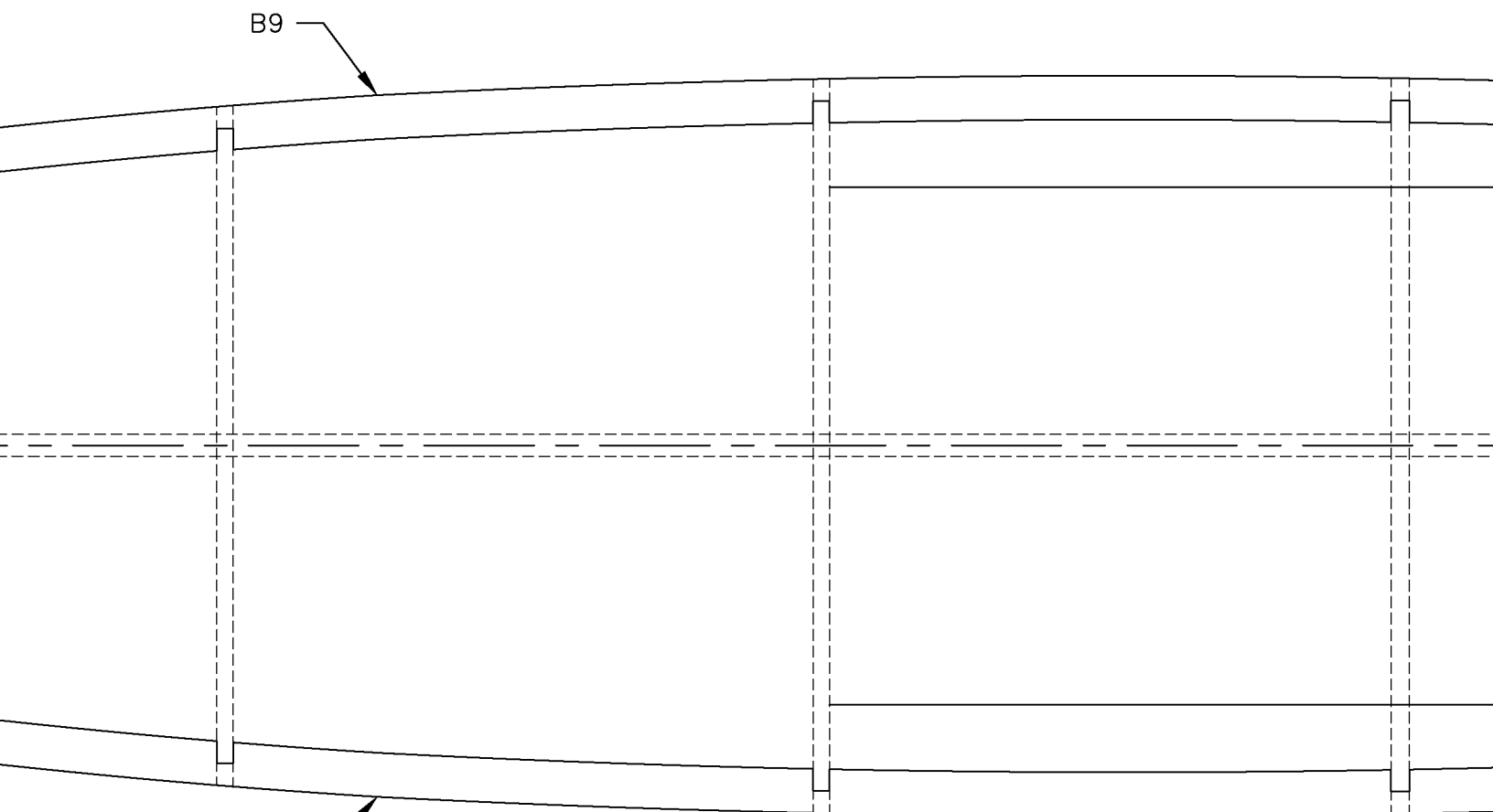
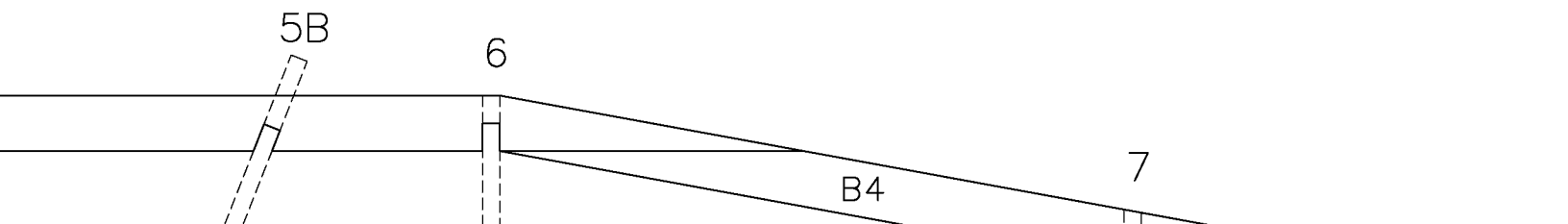
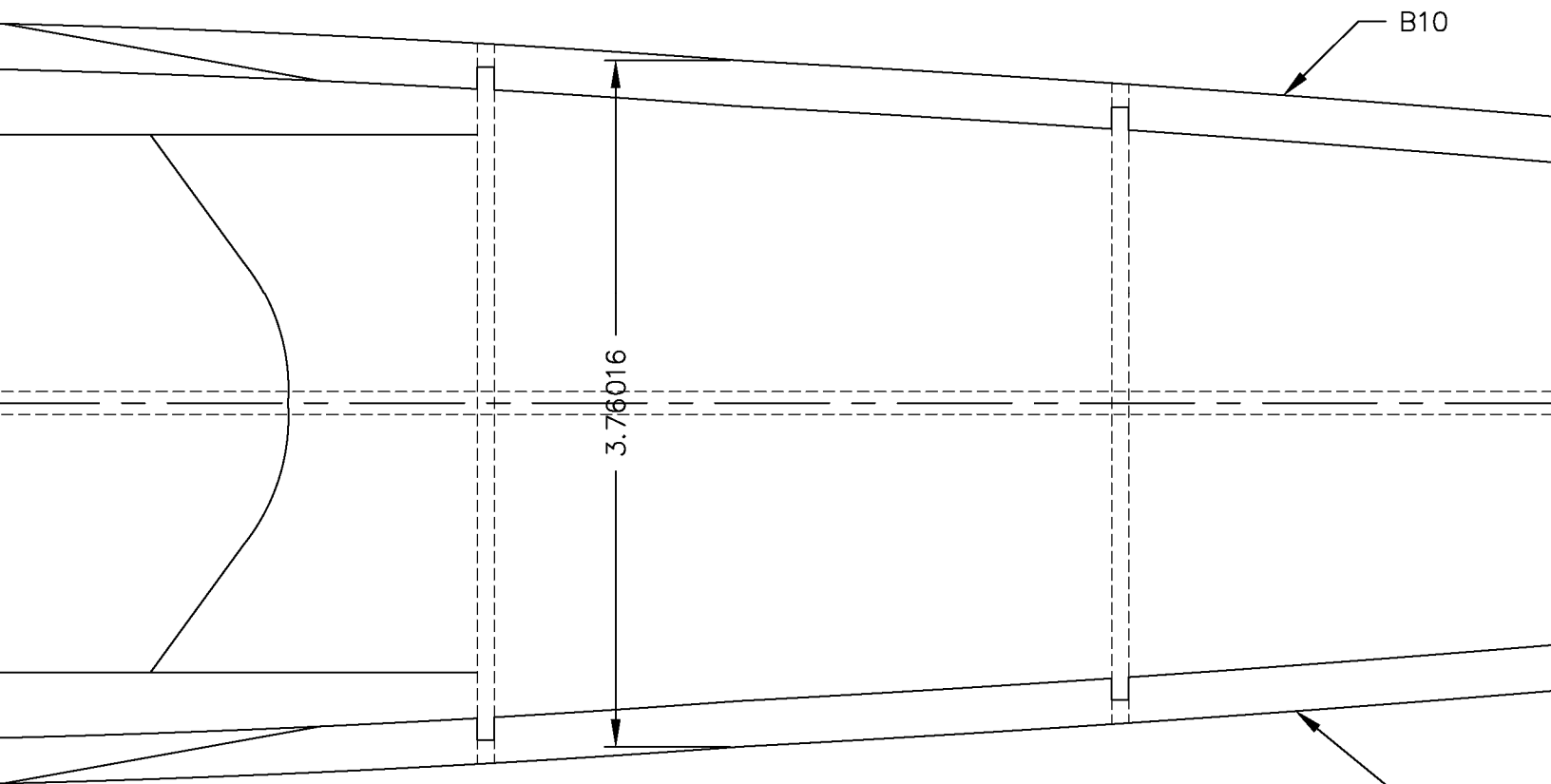


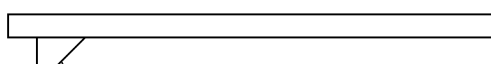
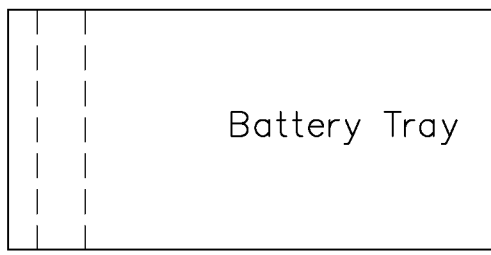
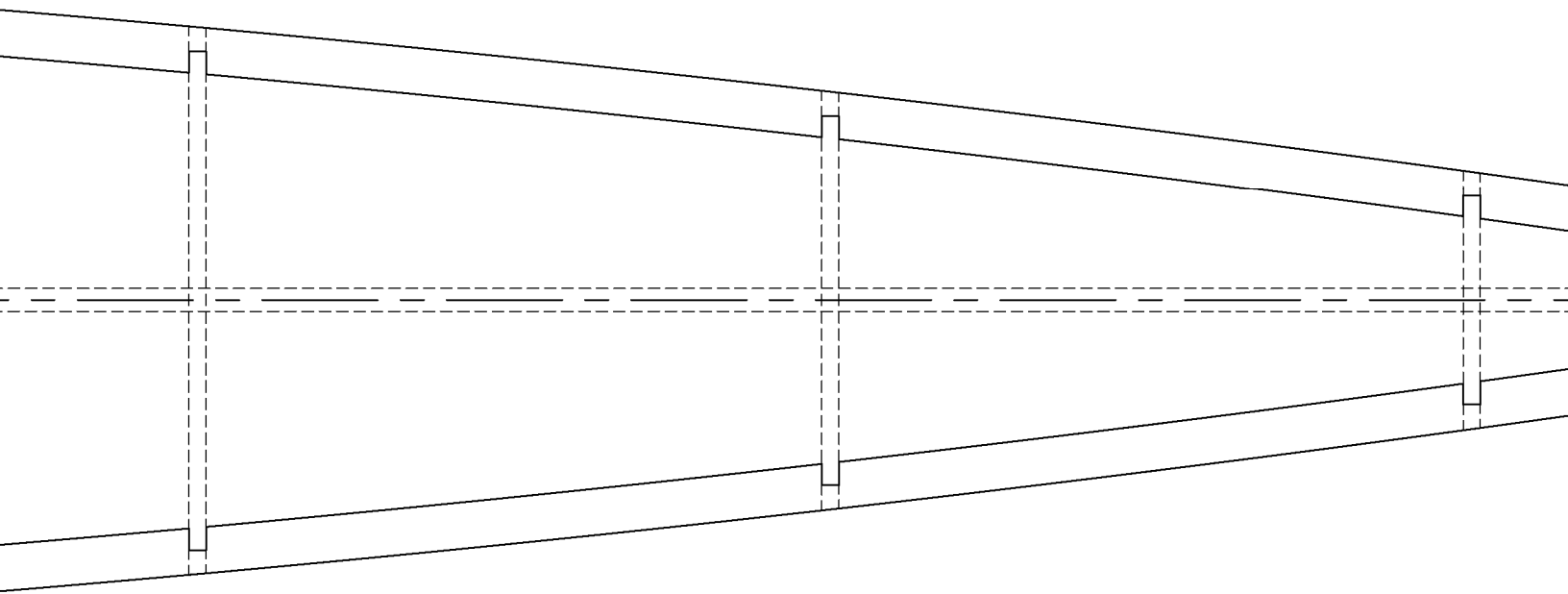
Suppo 2217  
Brushless M

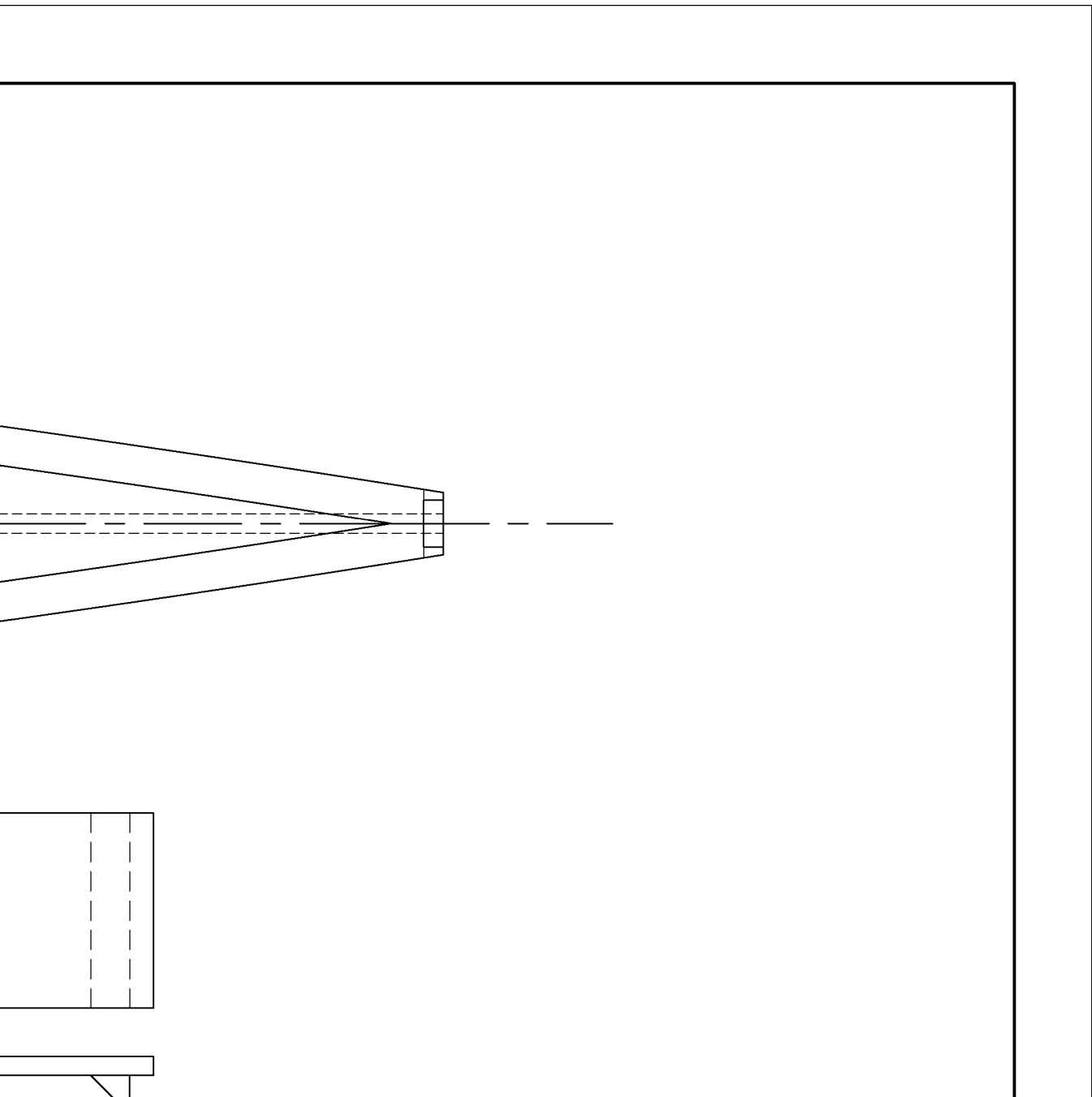


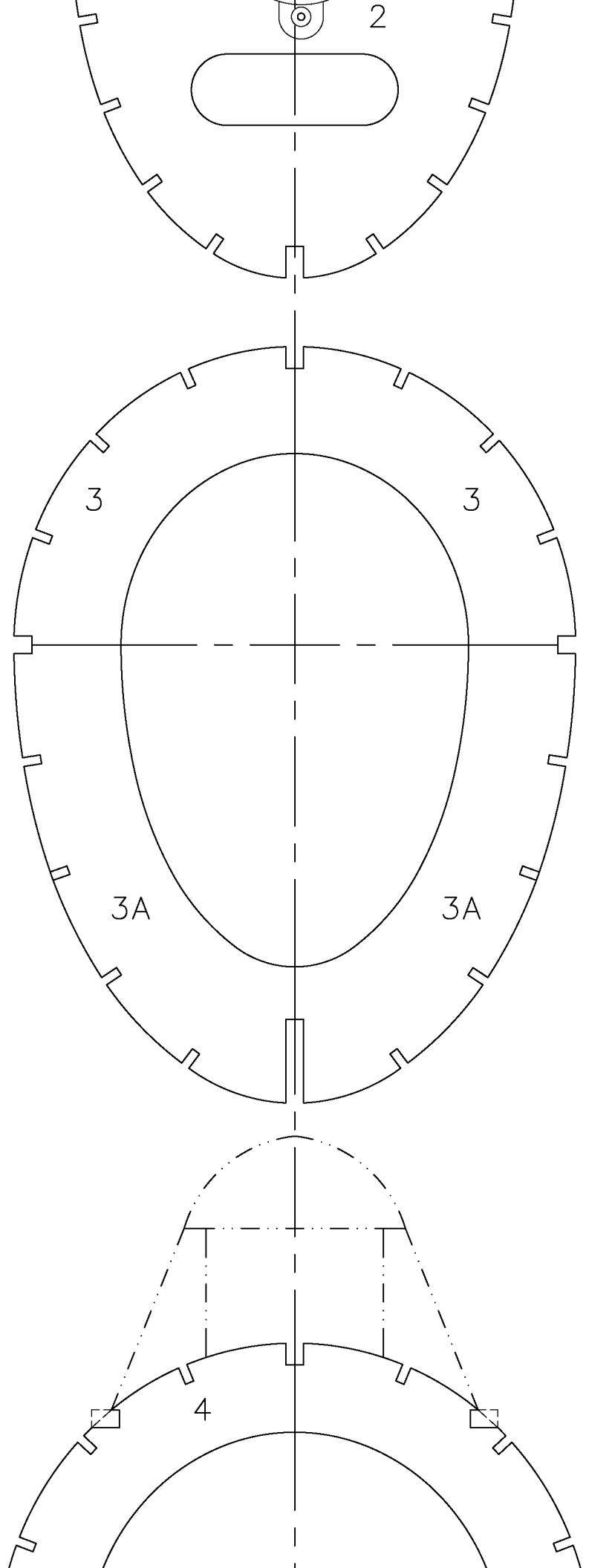
Note: The Fuselage Formers are Assembled in Upper and Lower Halves. Do Not Glue at the Center as the Fuselage is Built on the Half-Shell

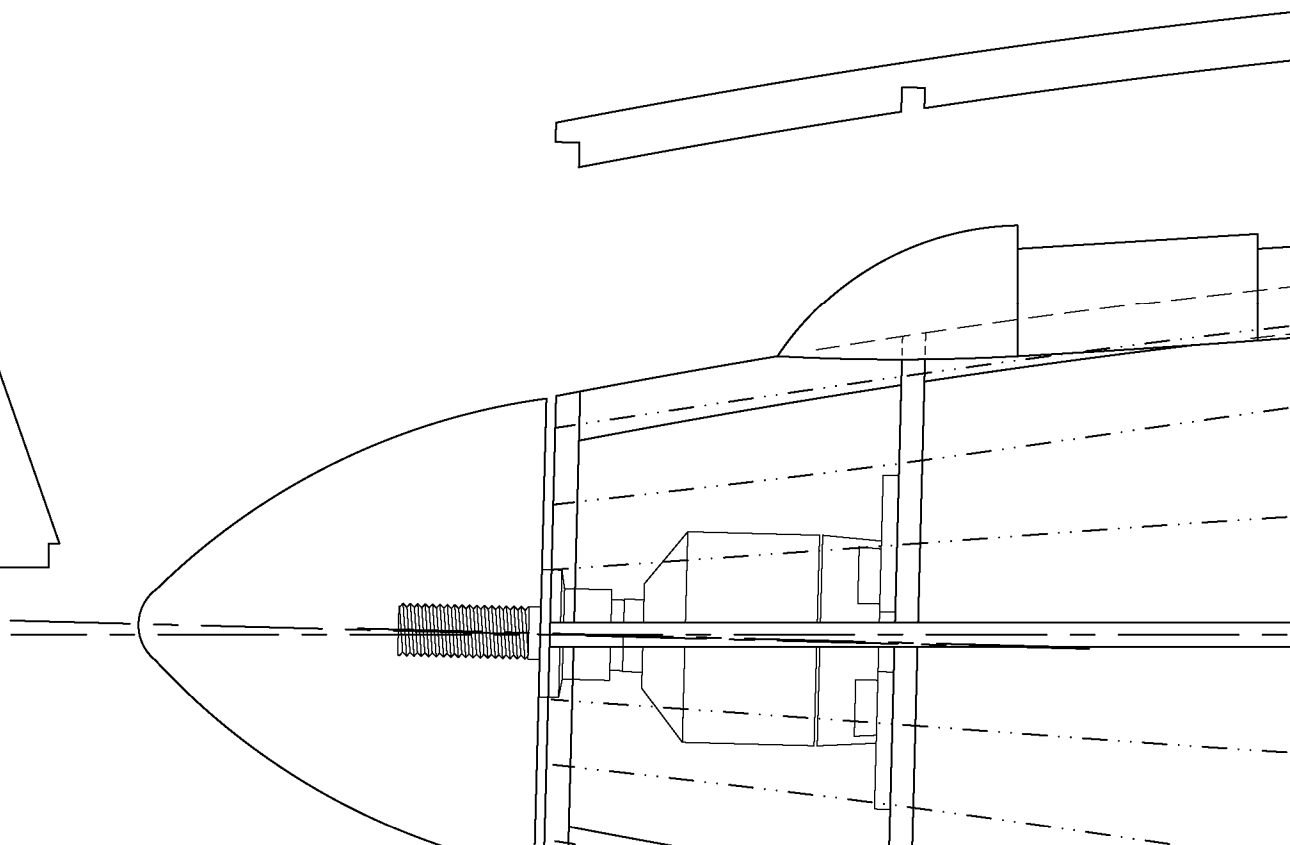
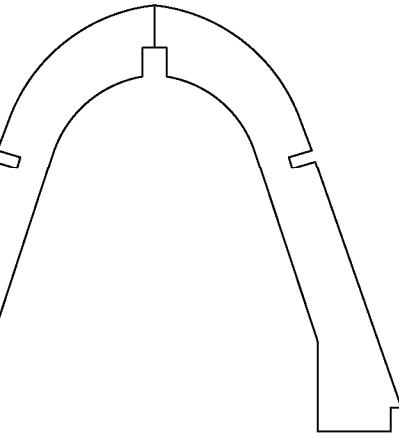
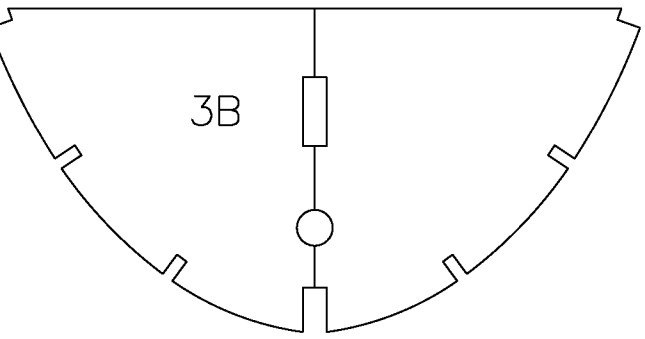
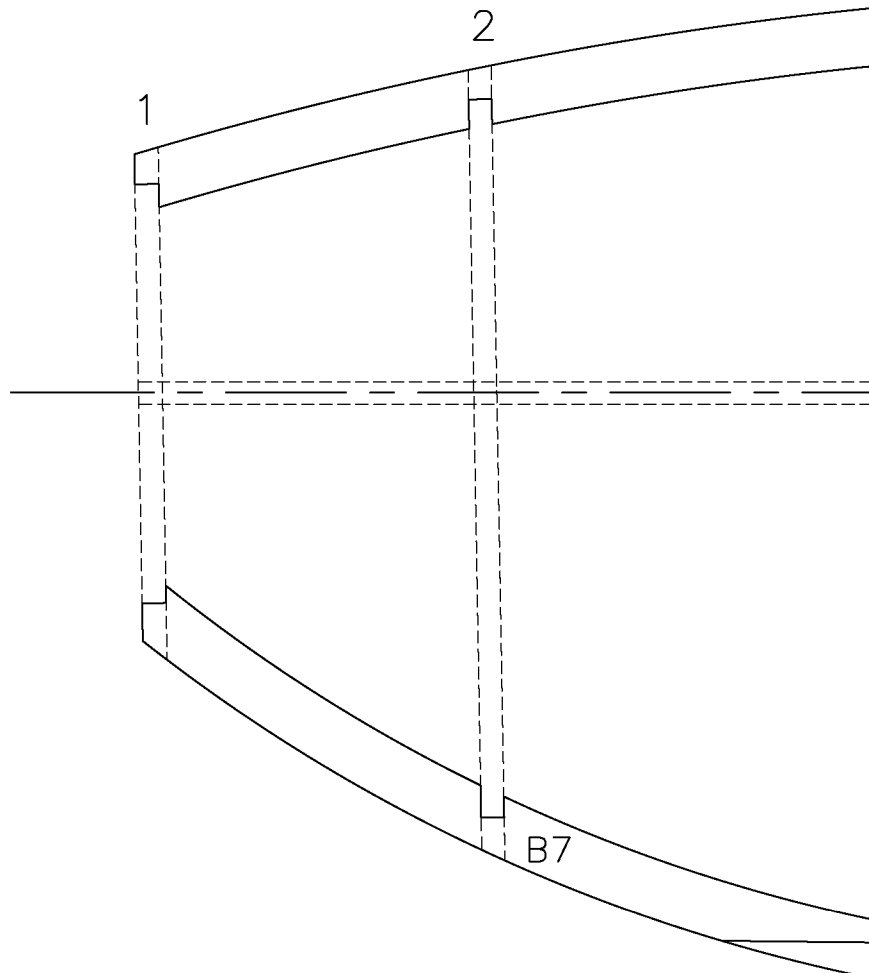
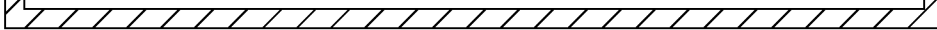




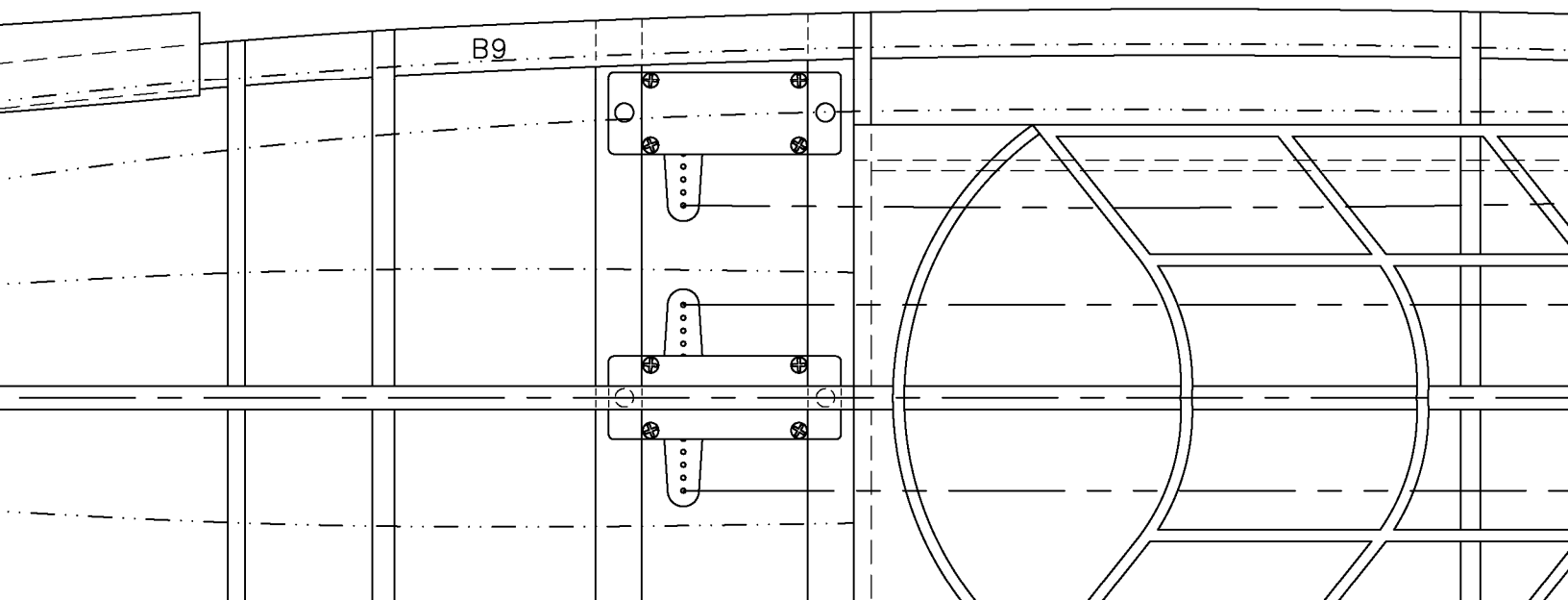
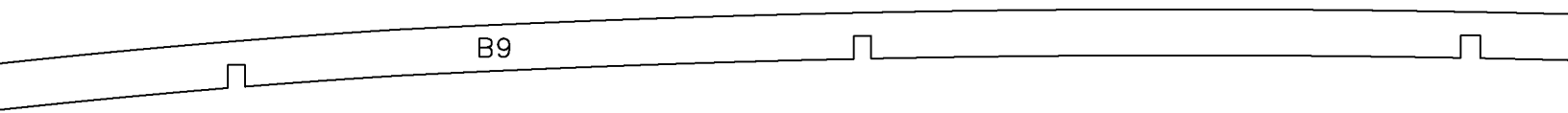
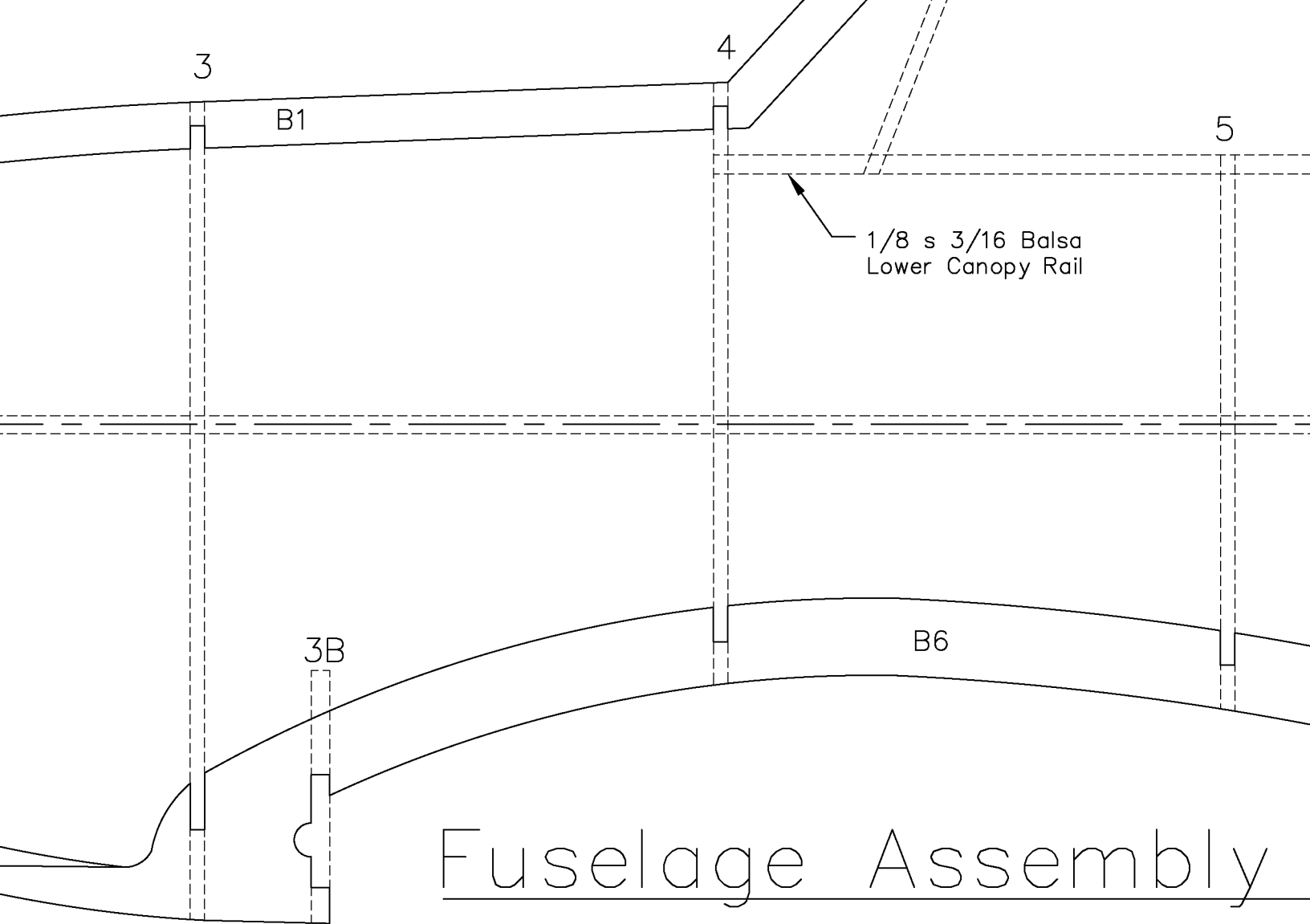


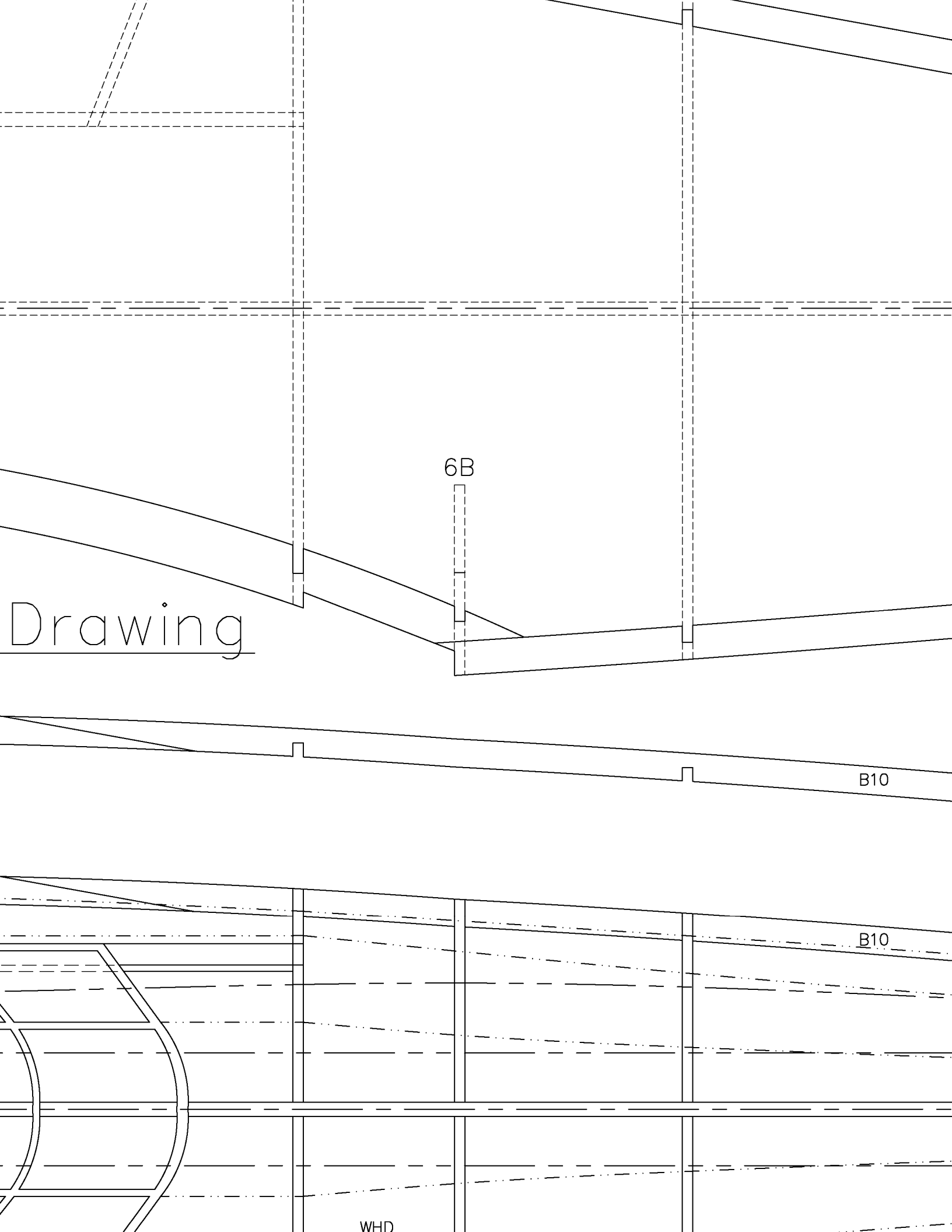












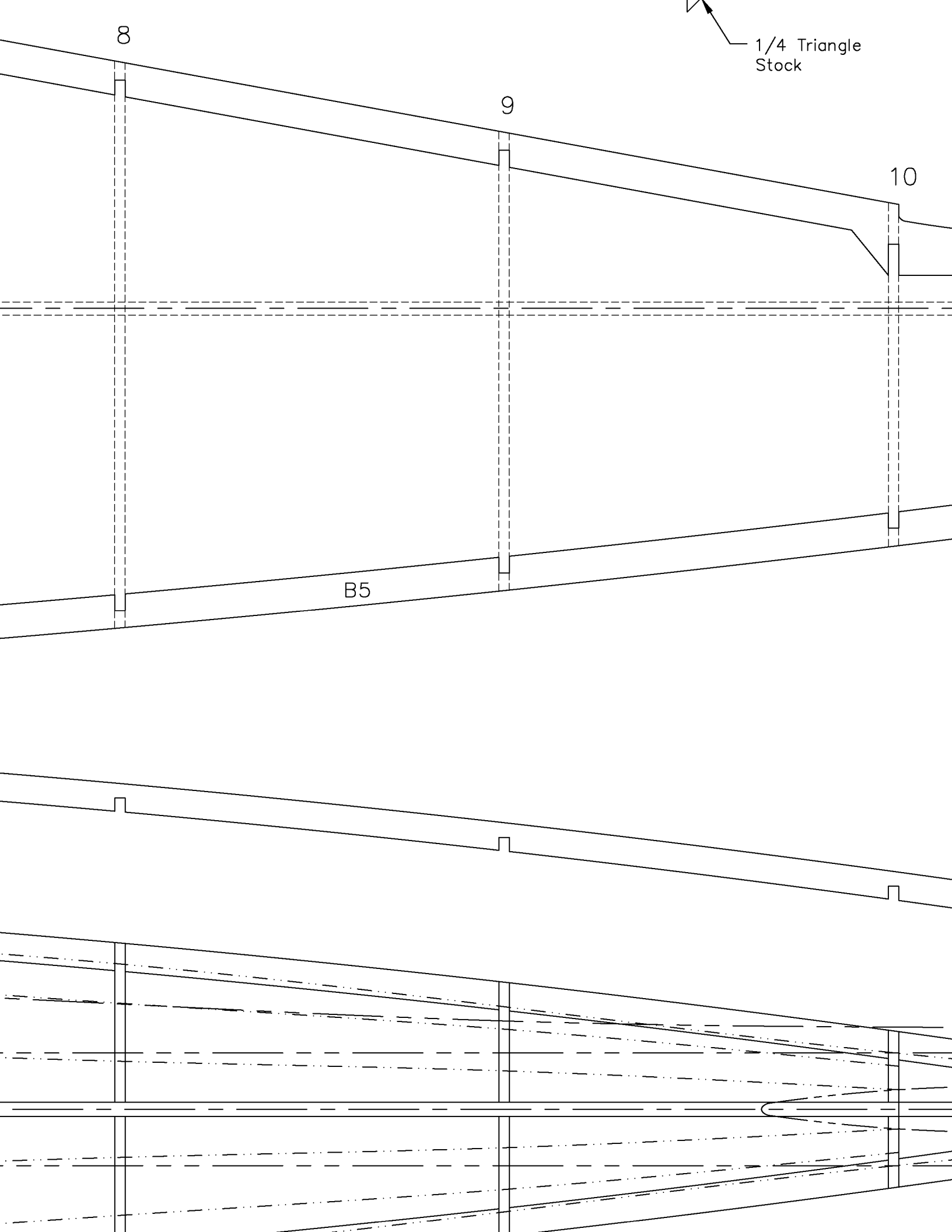
1/4 Triangle Stock

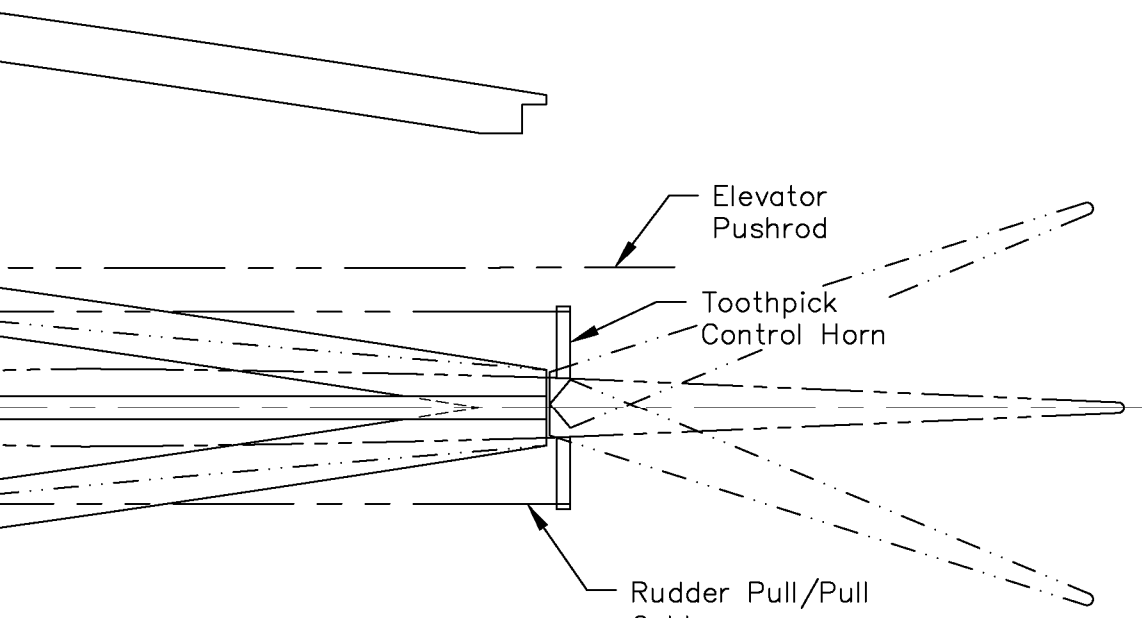
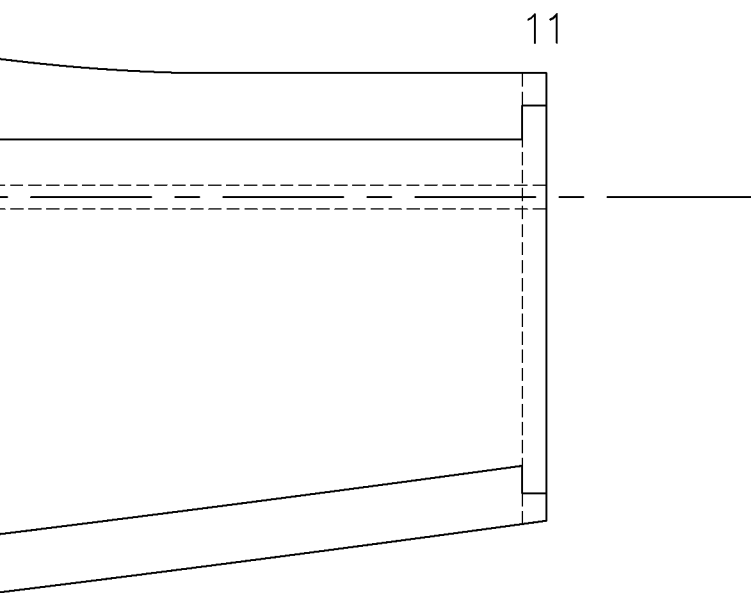
8

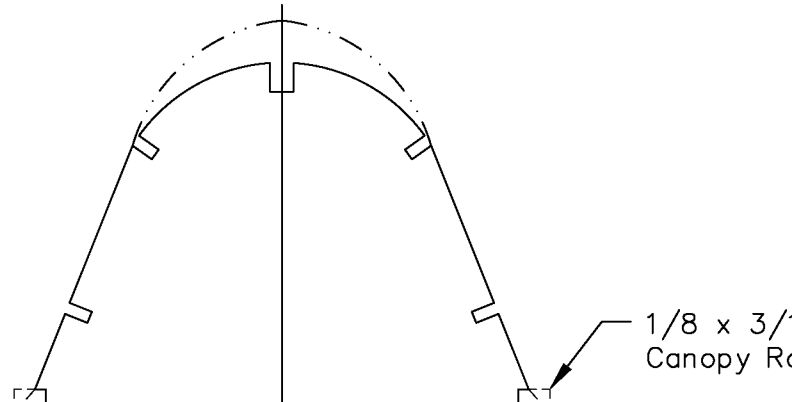
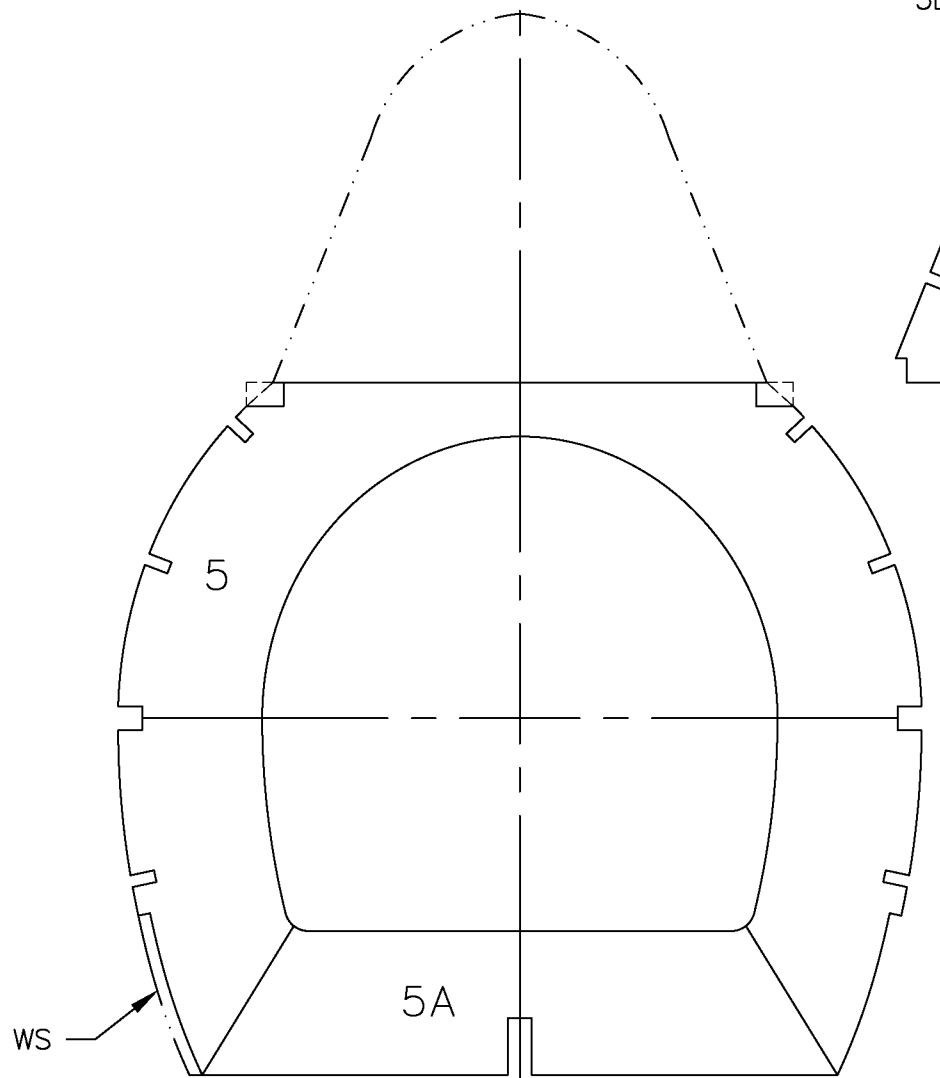
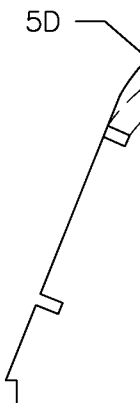
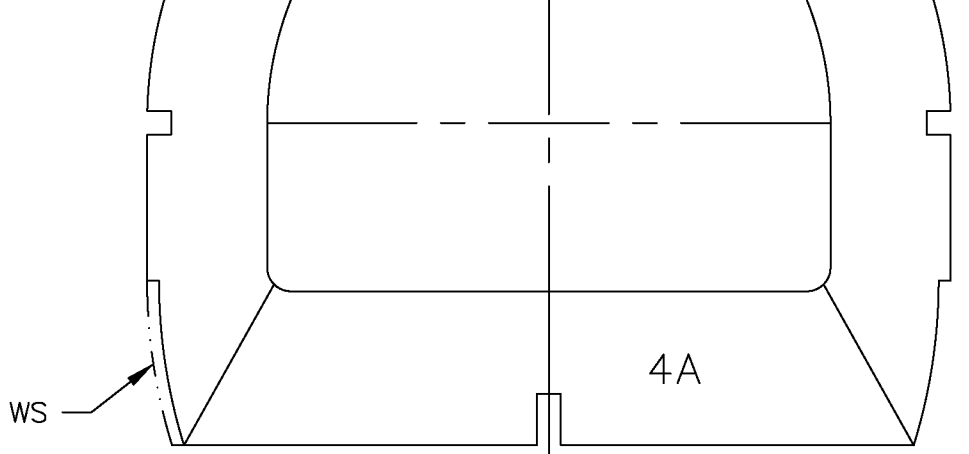
9

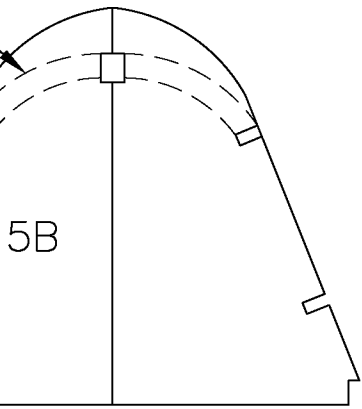
10

B5

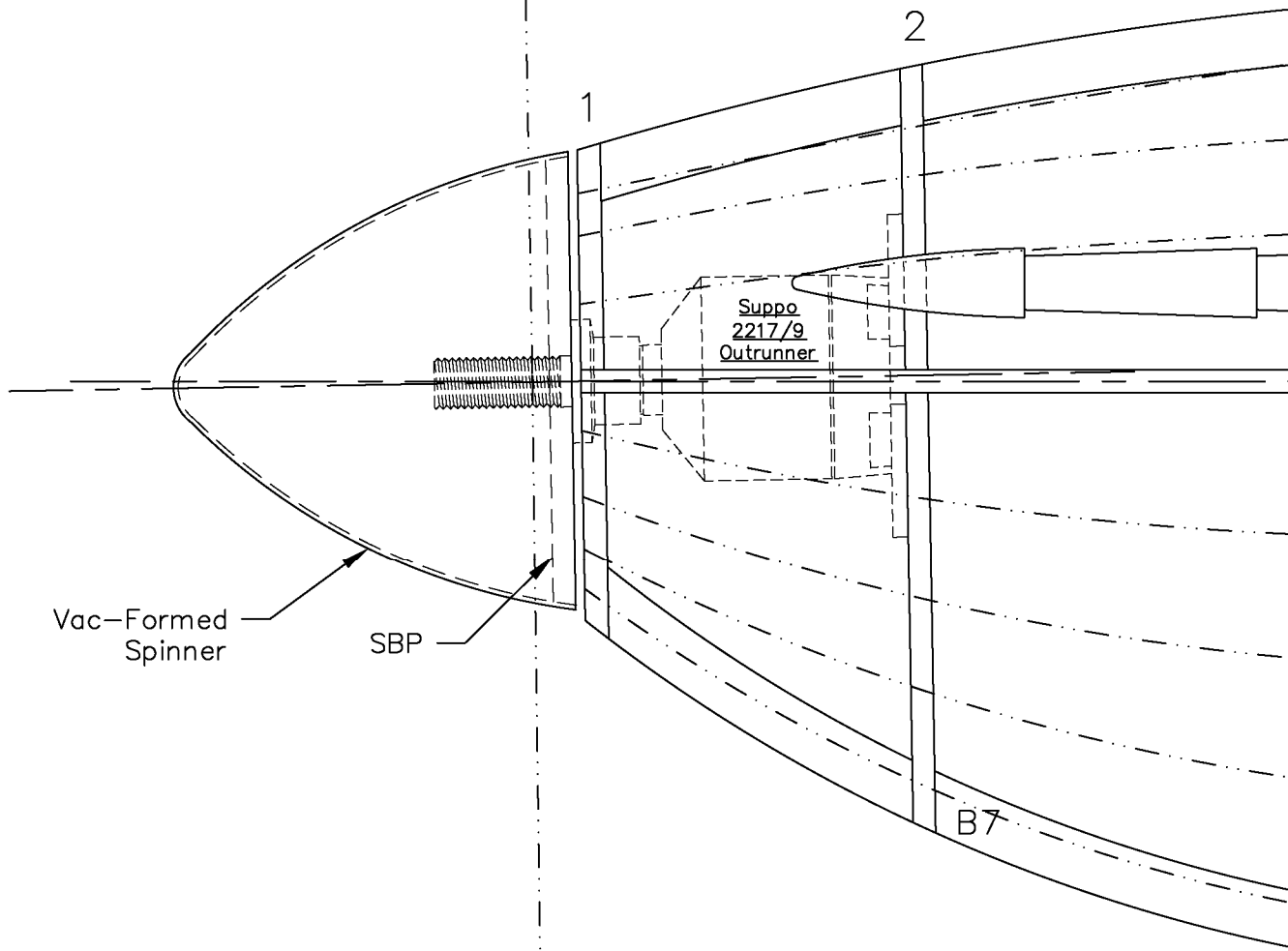


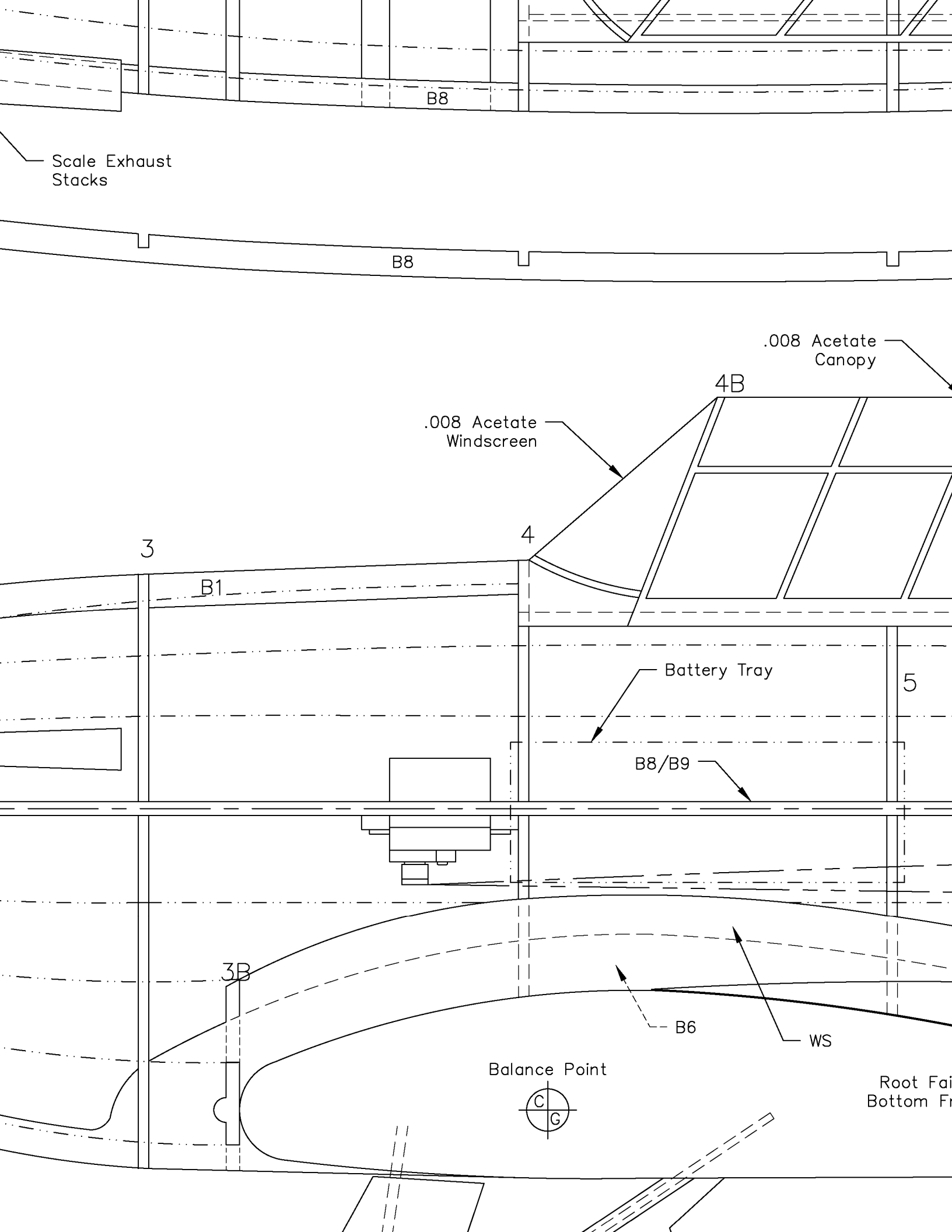


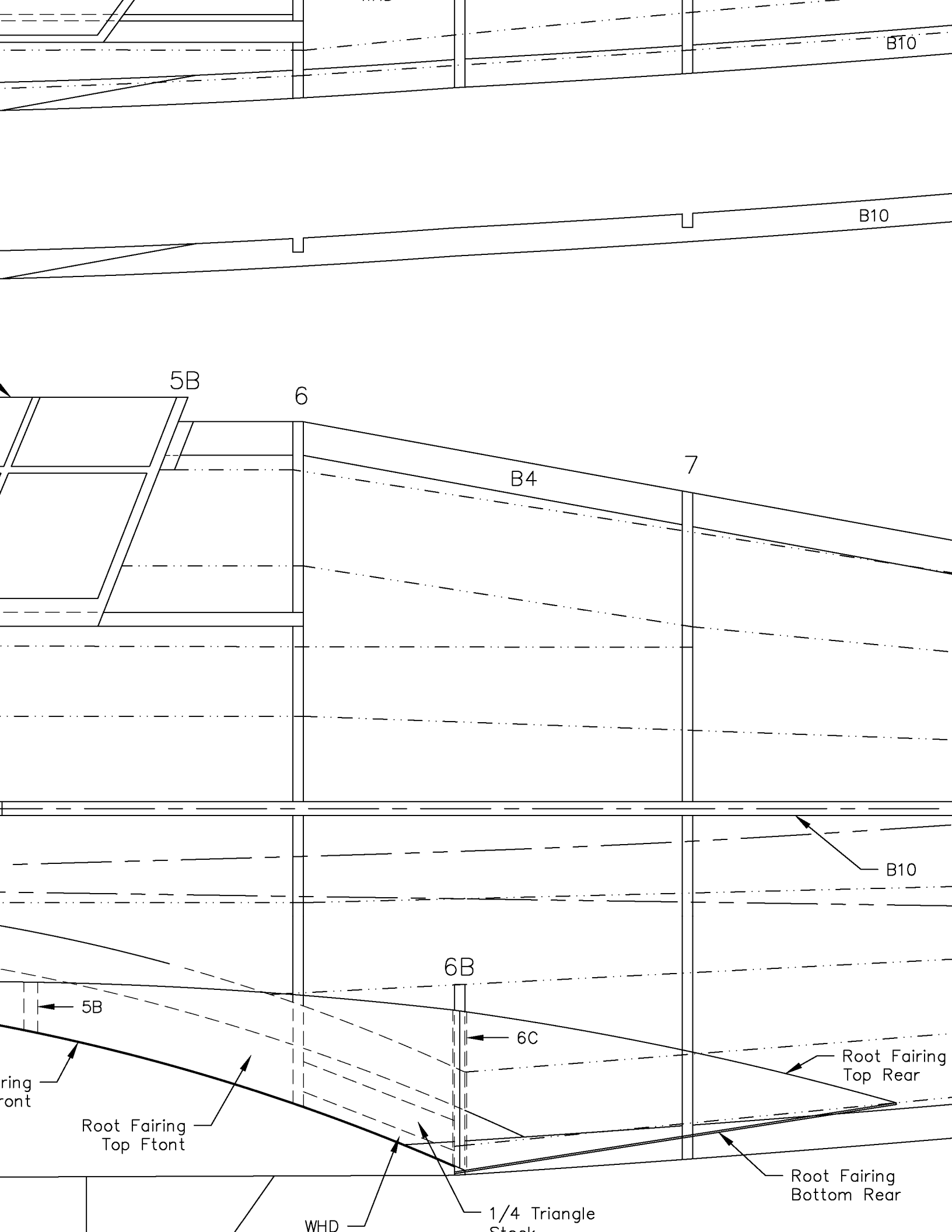




← APC 11-5.5E Prop







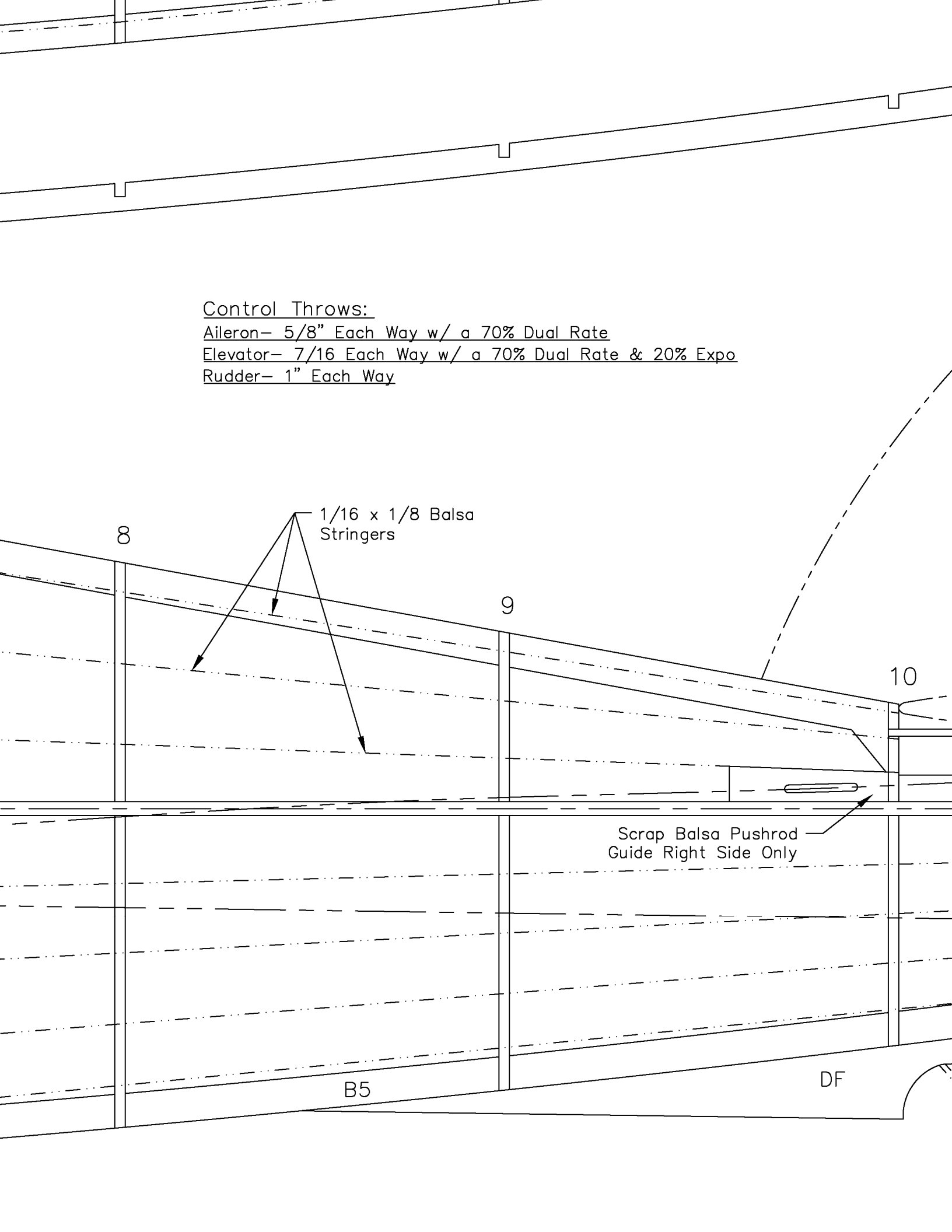


Control Throws:

Aileron— 5/8" Each Way w/ a 70% Dual Rate

Elevator— 7/16 Each Way w/ a 70% Dual Rate & 20% Expo

Rudder— 1" Each Way



8

1/16 x 1/8 Balsa  
Stringers

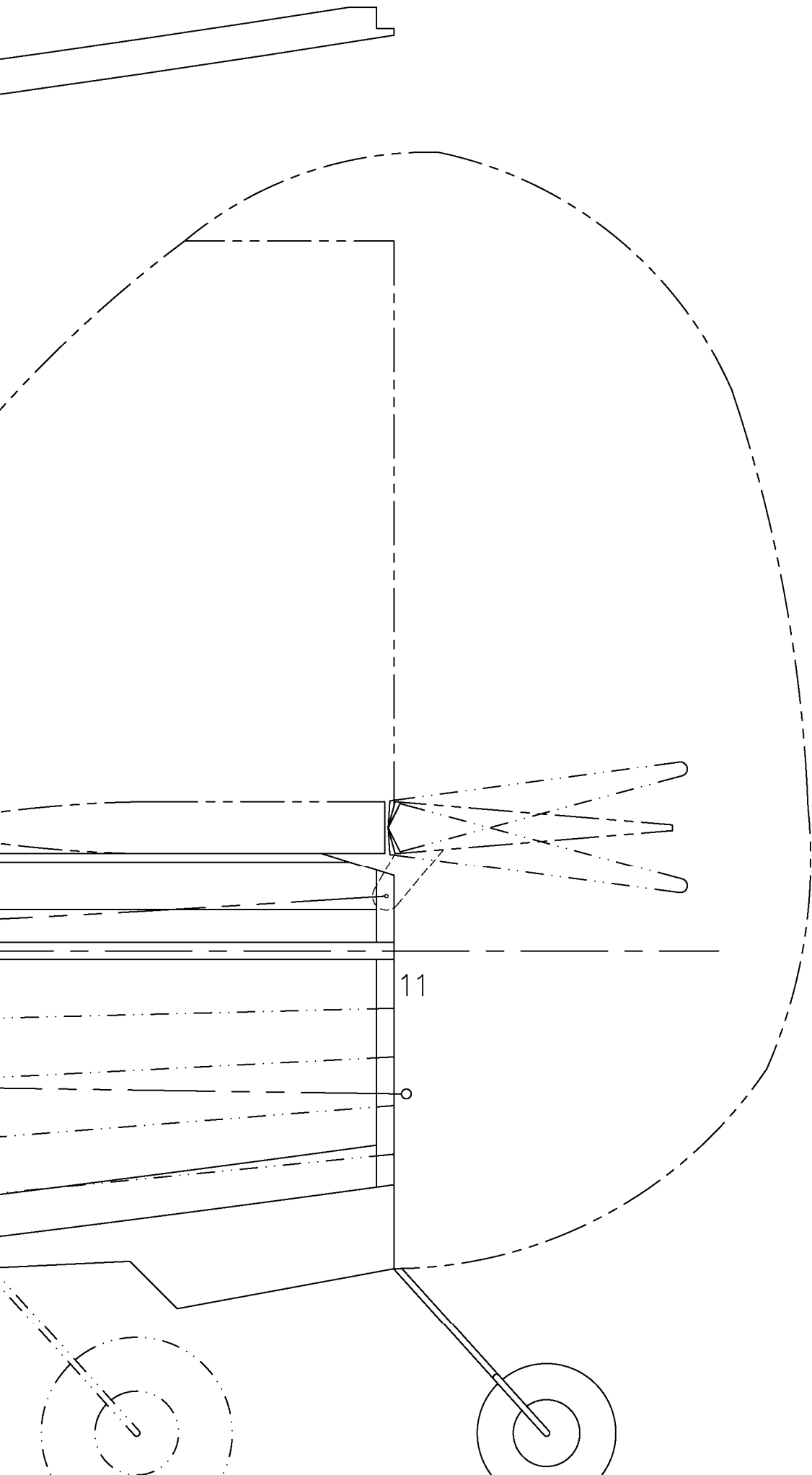
9

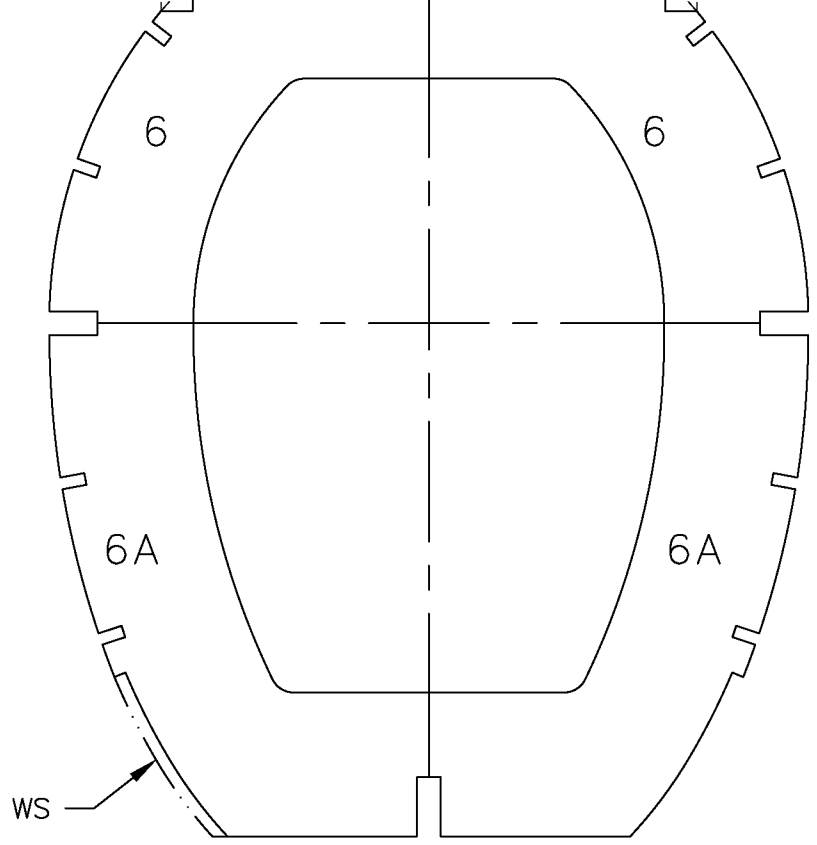
10

Scrap Balsa Pushrod  
Guide Right Side Only

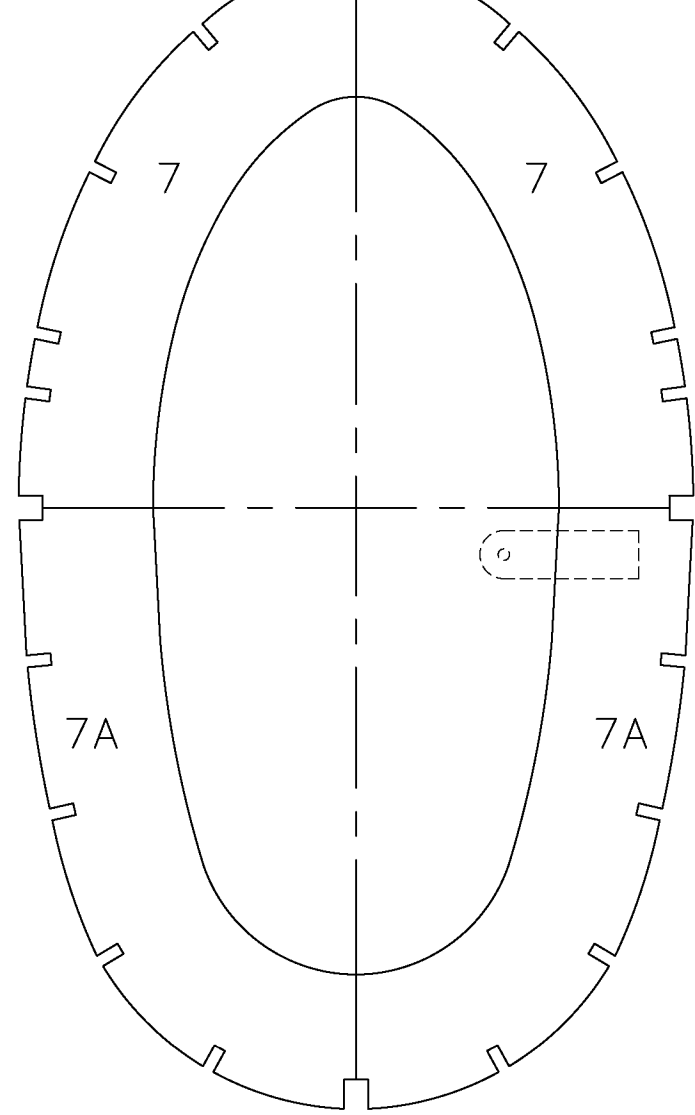
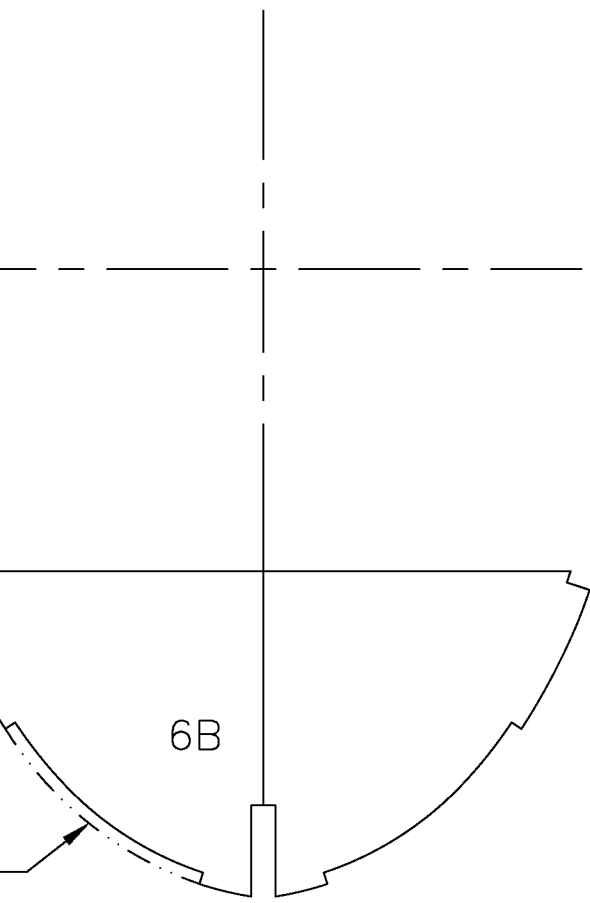
B5

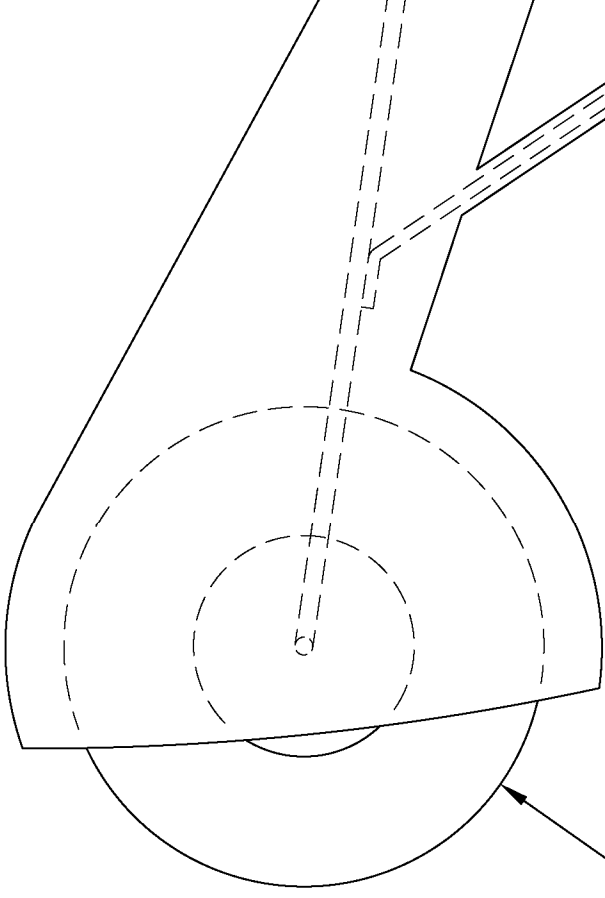
DF





WS





Copyright 2023



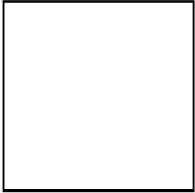
and

**Mo**  
Bringing Motorists Together

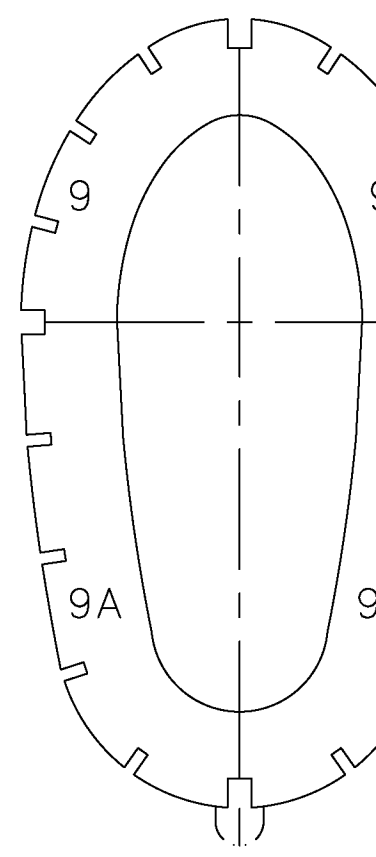
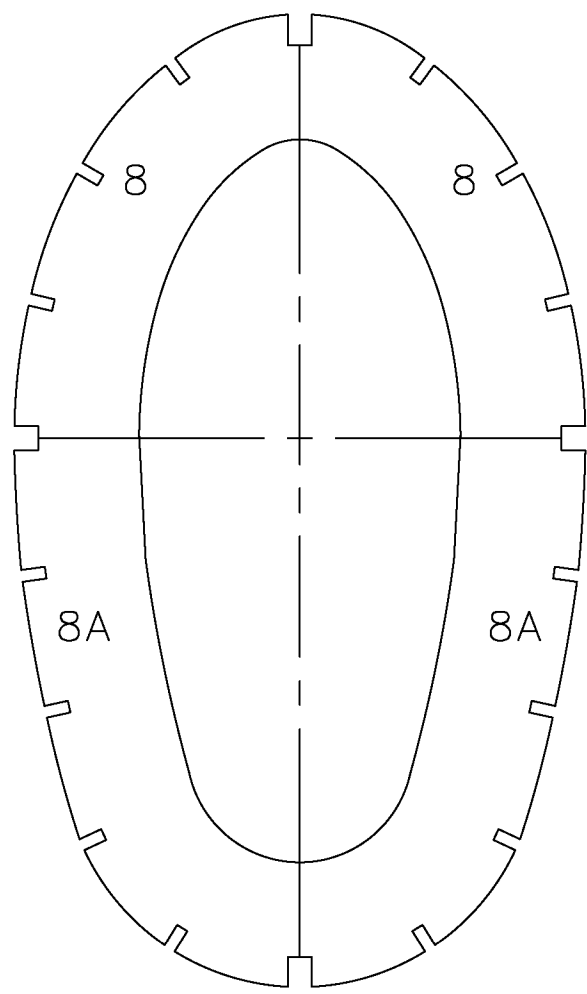
**Copying for resale of this drawing without the written approval or consent of the copyright owner is expressly prohibited.**

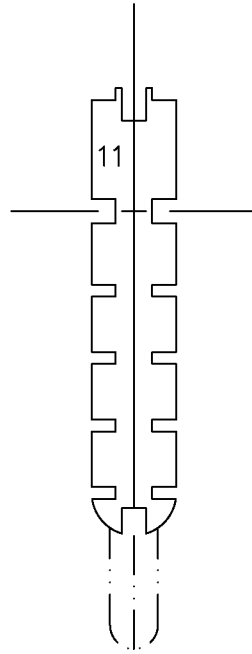
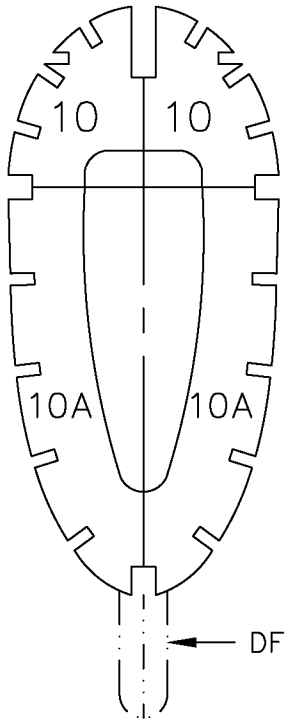
2 1/2" Main  
Wheels

1 inch reference square



**deviation**  
wing without  
cent of AMA  
ted.





1" Tail  
Wheel

## Plan No. 1136

# Hawker Hurricane

Span: 48"      Length 37.3"

Wing Area: 382.4 Sq. In.

Flying Weight: 20.5 Oz.

Wing Loading: 7.75 Oz./ Sq. Ft.

Des. by: Pat Tritle for Model Aviation Magazine

Sheet 1 of 3



2-20-2023