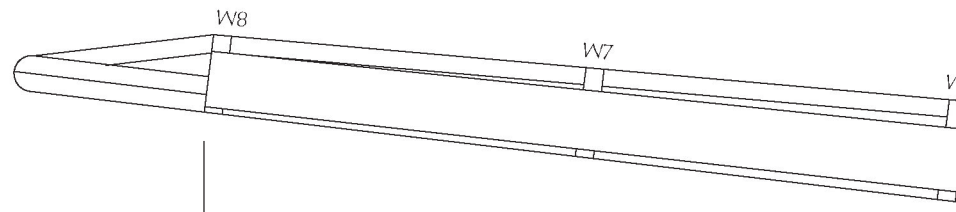
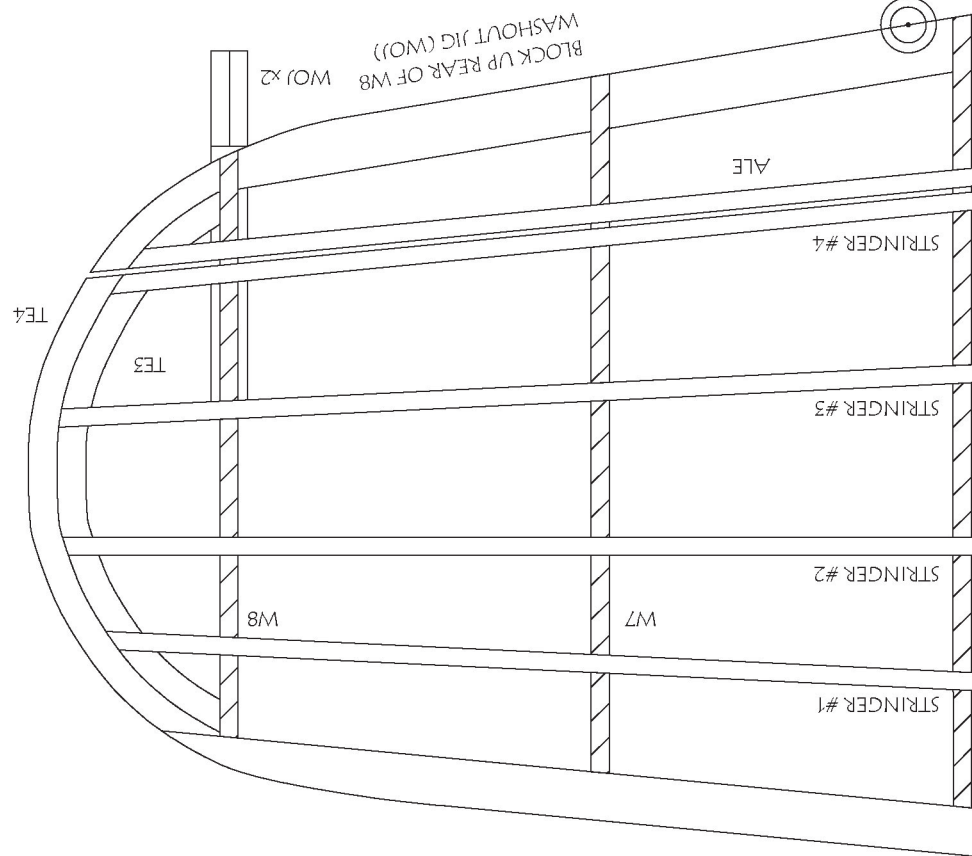
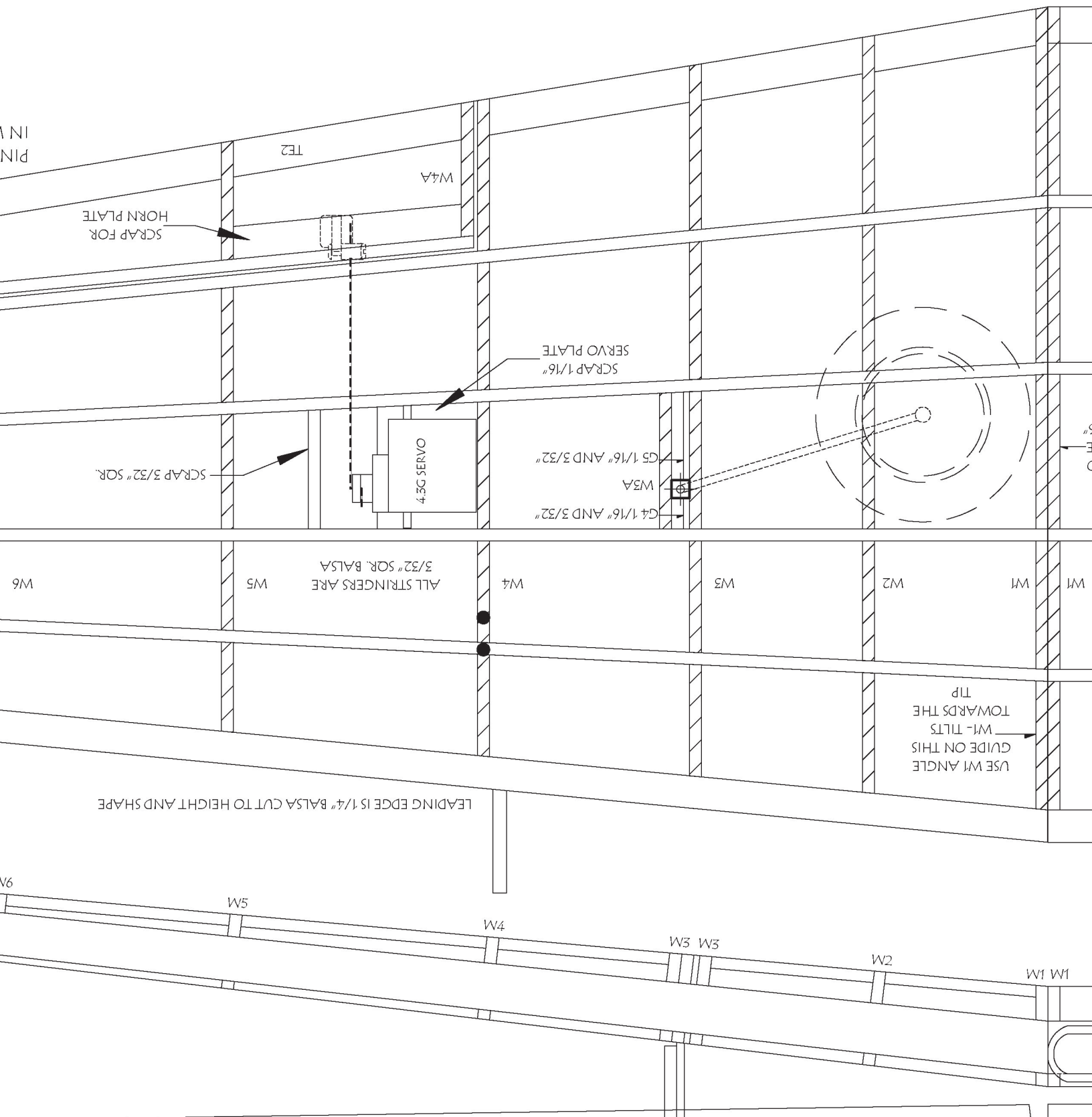
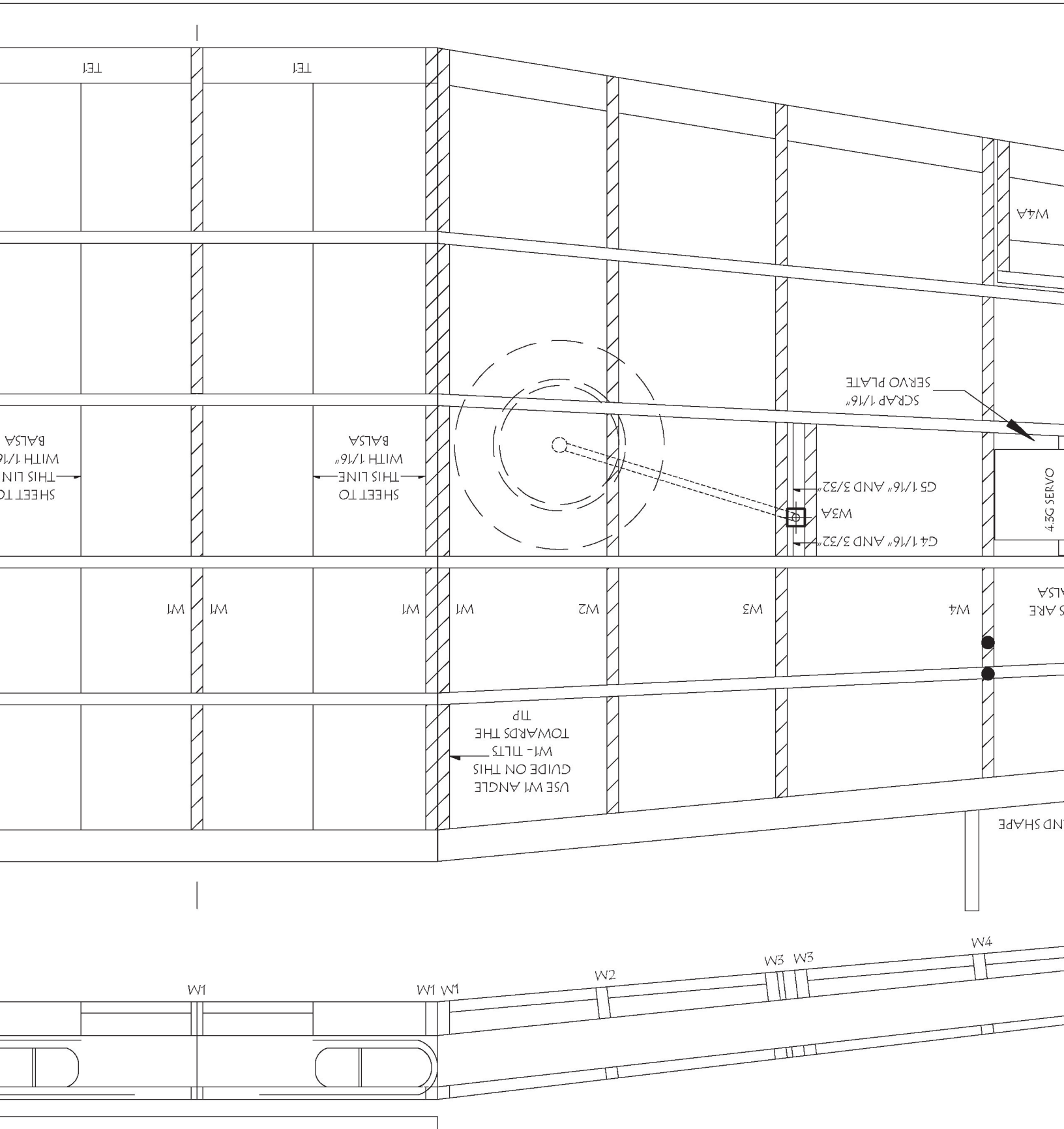


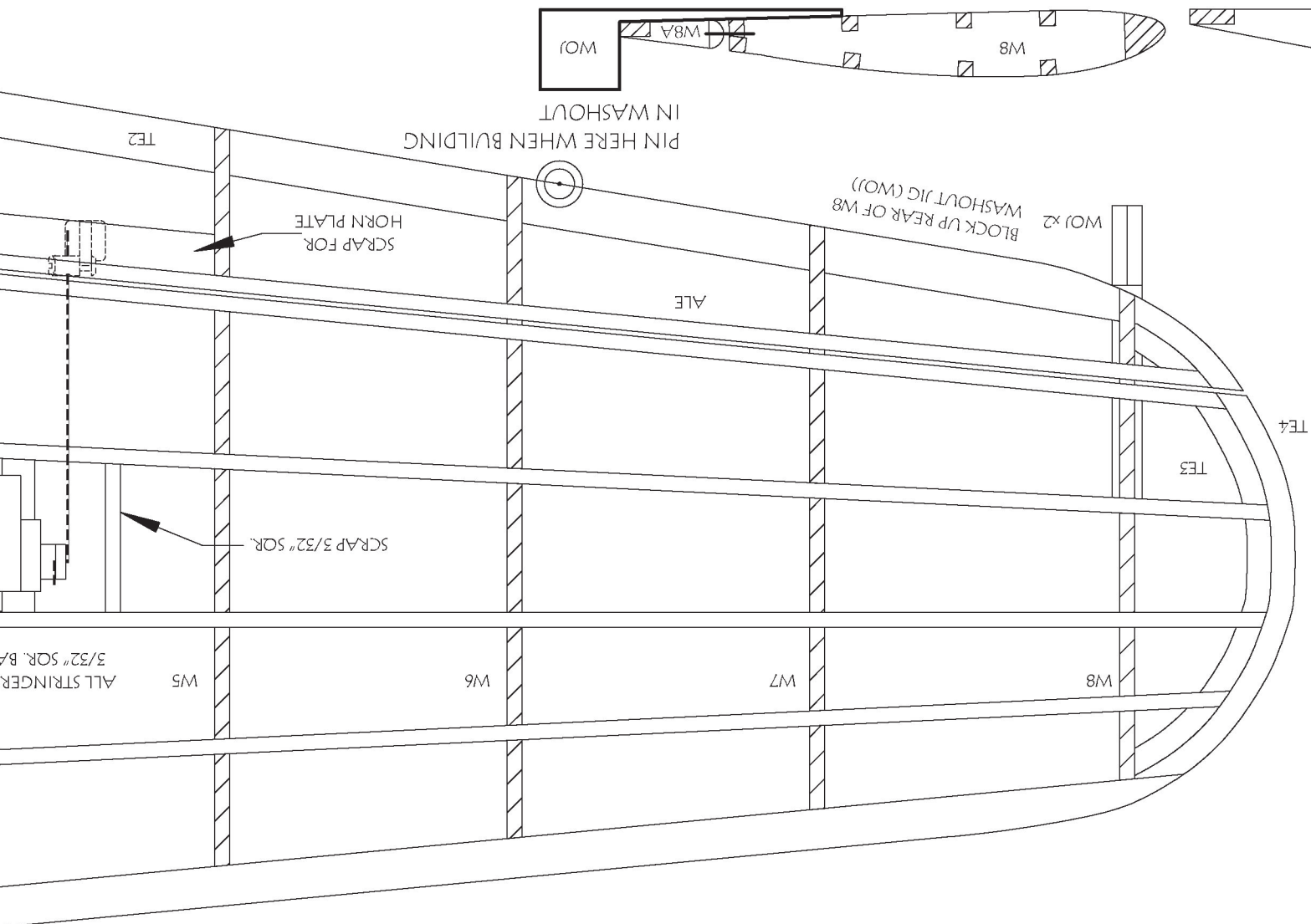
HERE WHEN BUILDING WASHOUT



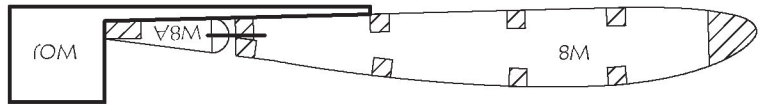
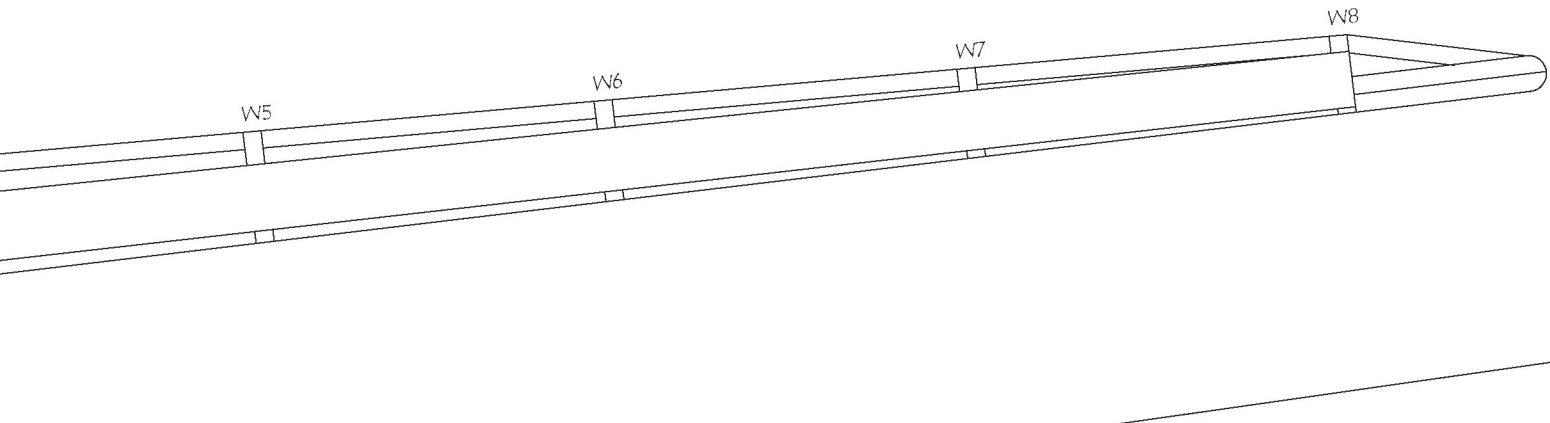
DIHEDRAL IS 1.45" EACH SIDE AT W8





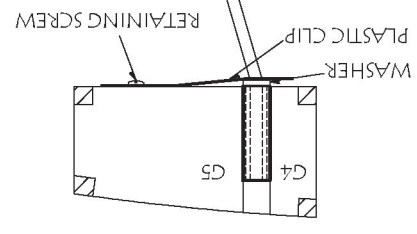
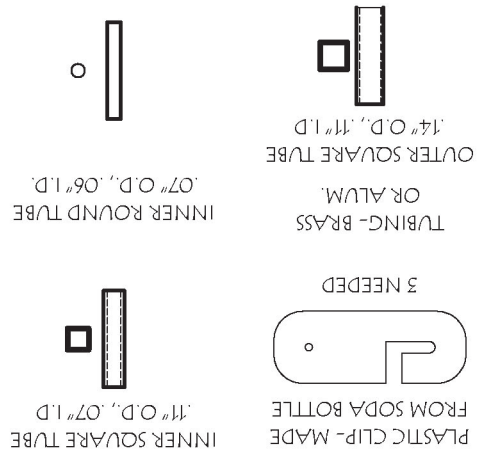
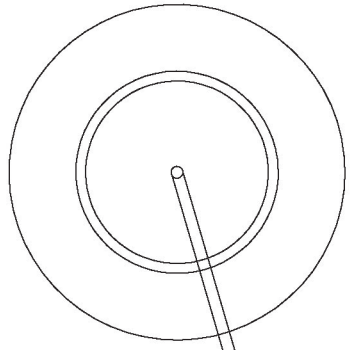
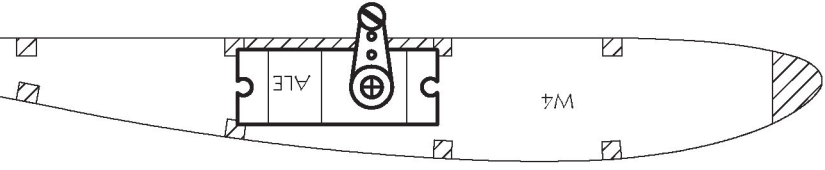


LEADING EDGE IS 1/4" Balsa CUT TO HEIGHT A

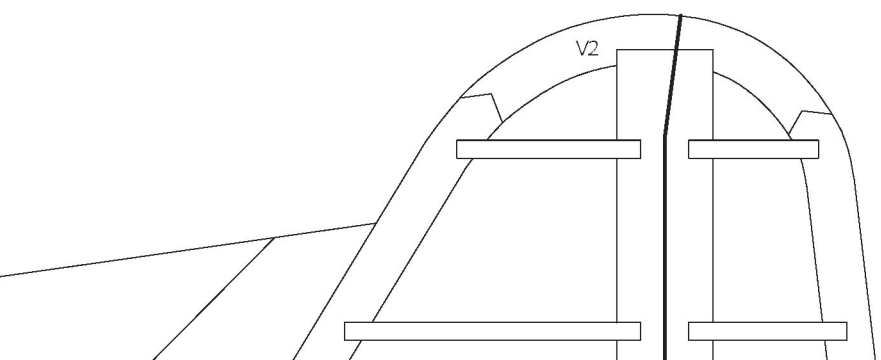
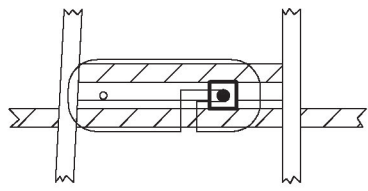


PIN HERE WHEN BUILDING IN WASHOUT

W01 x2 WASHOUT JIG (W01)
BLOCK UP REAR OF W8

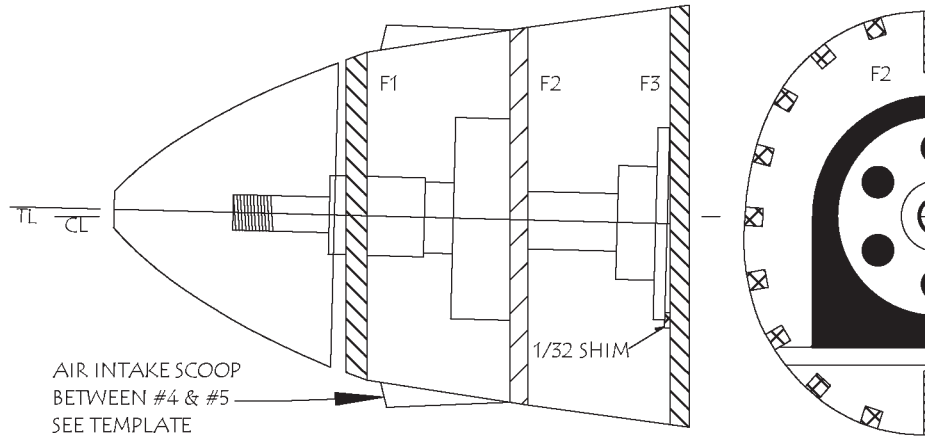


PLUG-IN STRUTS
 OUTER SQUARE TUBE- .14" O.D., .11" I.D.
 INNER SQUARE TUBE- .11" O.D., .07" I.D.
 INNER ROUND TUBE- .07" O.D., .06" I.D.
 STRUT FROM 1/16" PLANO WIRE
 STRUT IS JB WELD TO INNER ROUND
 AND SQUARE TUBE



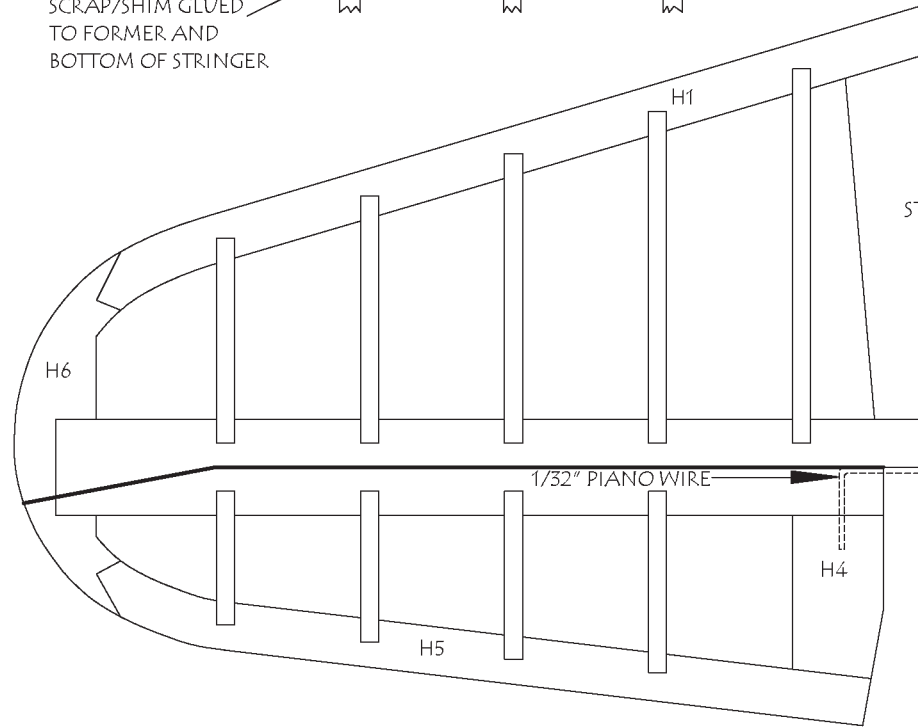
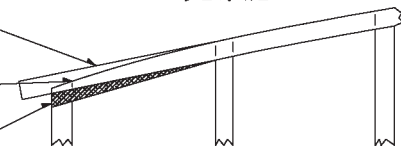


TOP VIEW WITH 1.5° RIGHT THRUST

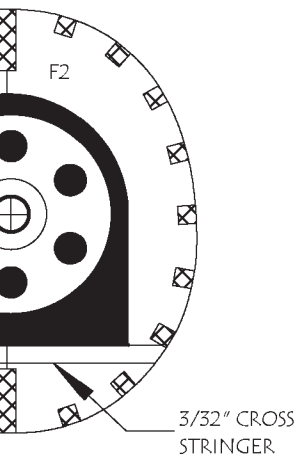


STRINGER "PIGGY-BACK" DETAIL

STRINGER IN NATURAL POSITION - SANDED TO FUSE CONTOUR LATER
TRUE FUSE OUTLINE
SCRAP/SHIM GLUED TO FORMER AND BOTTOM OF STRINGER

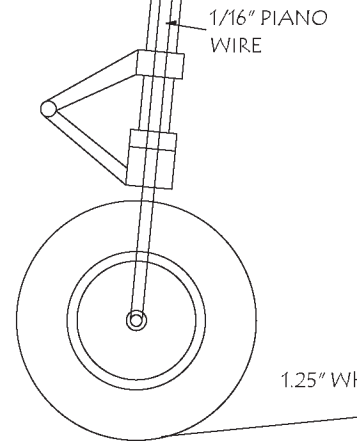
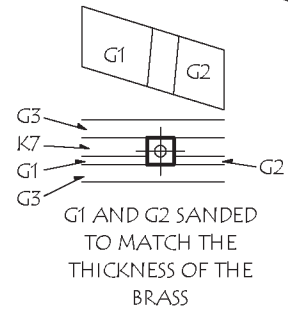
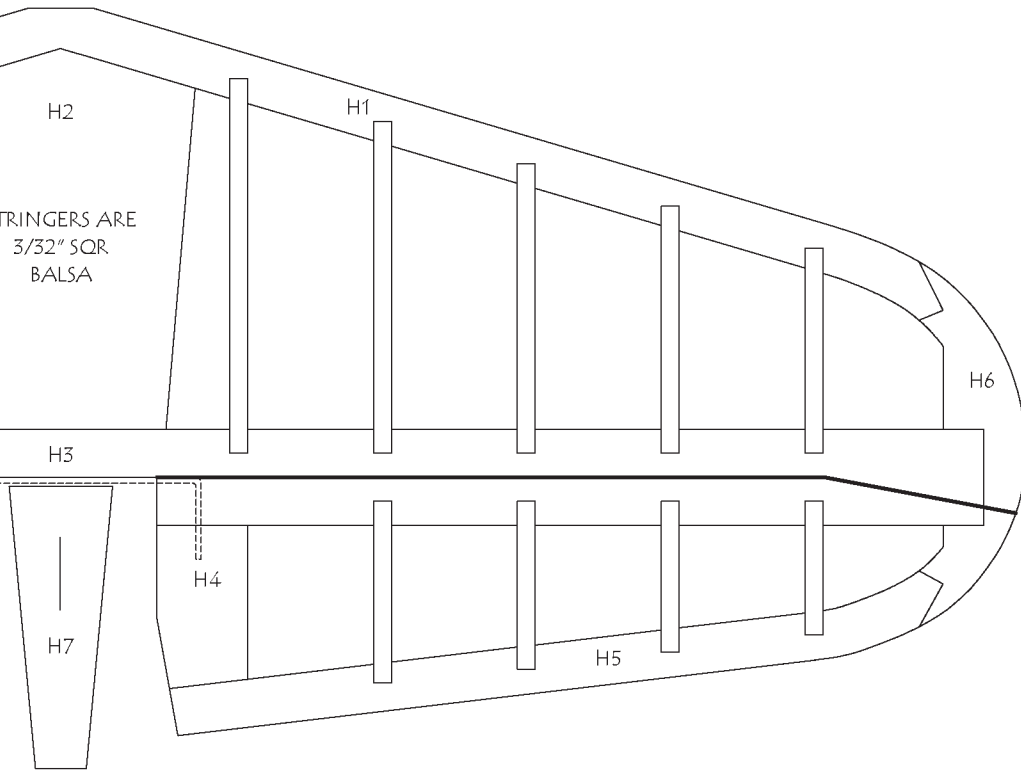
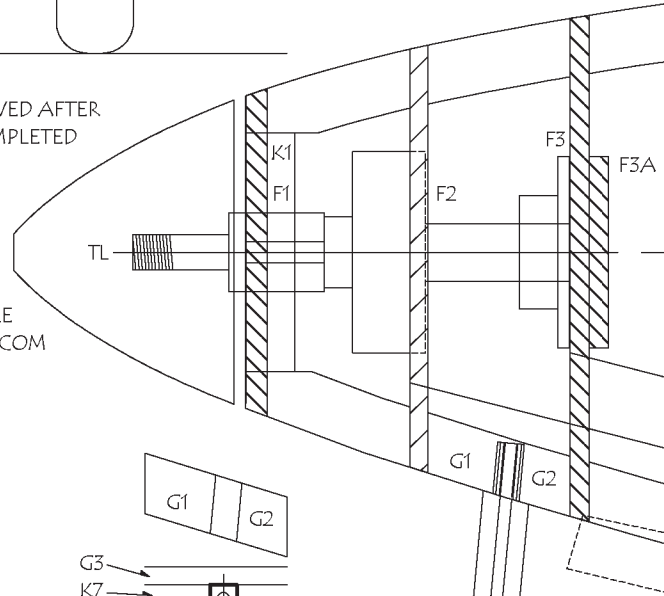


OUTER L.E. TEMPLATE- CUT DASHED LINE
AFTER WING IS REMOVED FROM THE BOARD



K1 IS REMOVED AFTER
FUZE IS COMPLETED

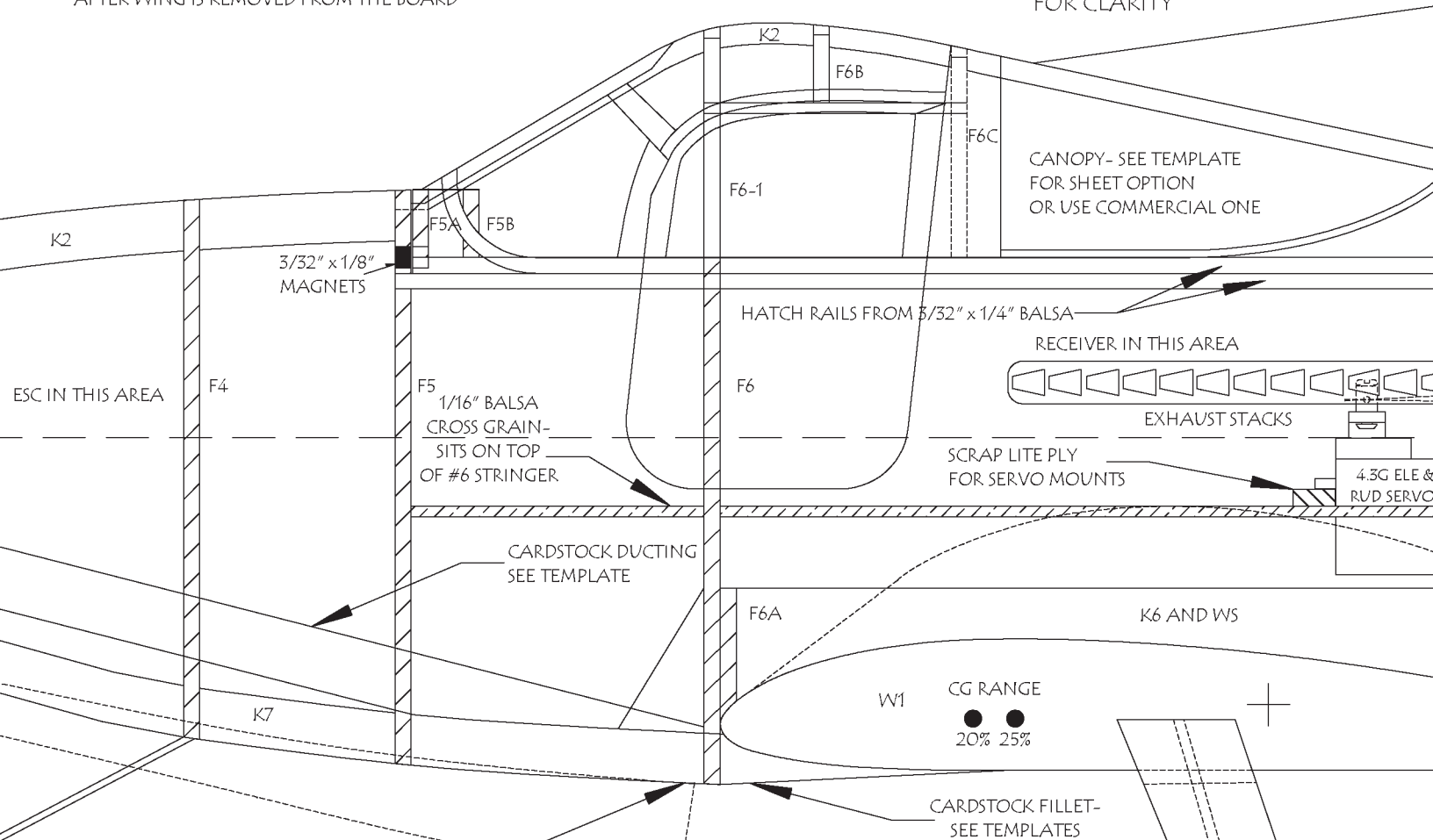
PRINTED SPINNER AVAILABLE
FROM WWW.RABIDMODELS.COM



1.25" WH

CENTER L.E. TEMPLATE- DASHED LINE CURVED
AFTER WING IS REMOVED FROM THE BOARD

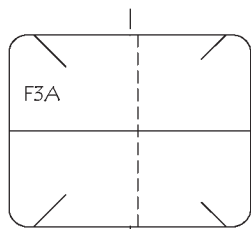
ALL STRINGERS ARE MEDIUM
3/32" SQR. BALSA- OMITTED
FOR CLARITY



DUCTING EXIT HOLES BETWEEN STRINGERS

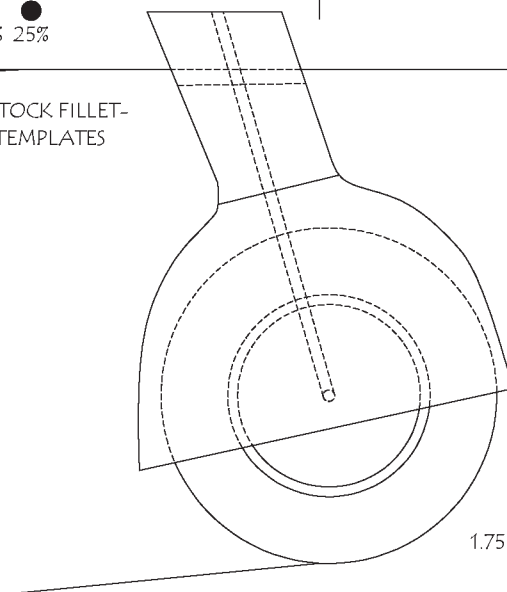
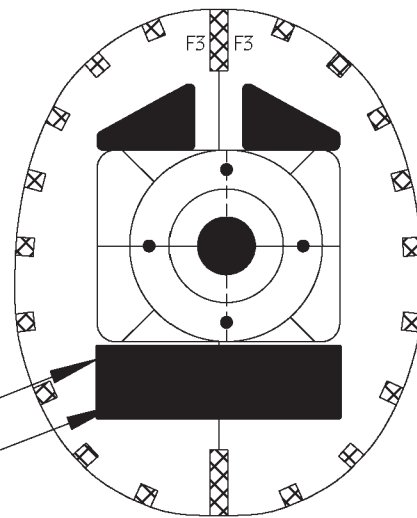
F3 DETAIL

DASHED LINE IS FOR 1.5° RIGHT THRUST

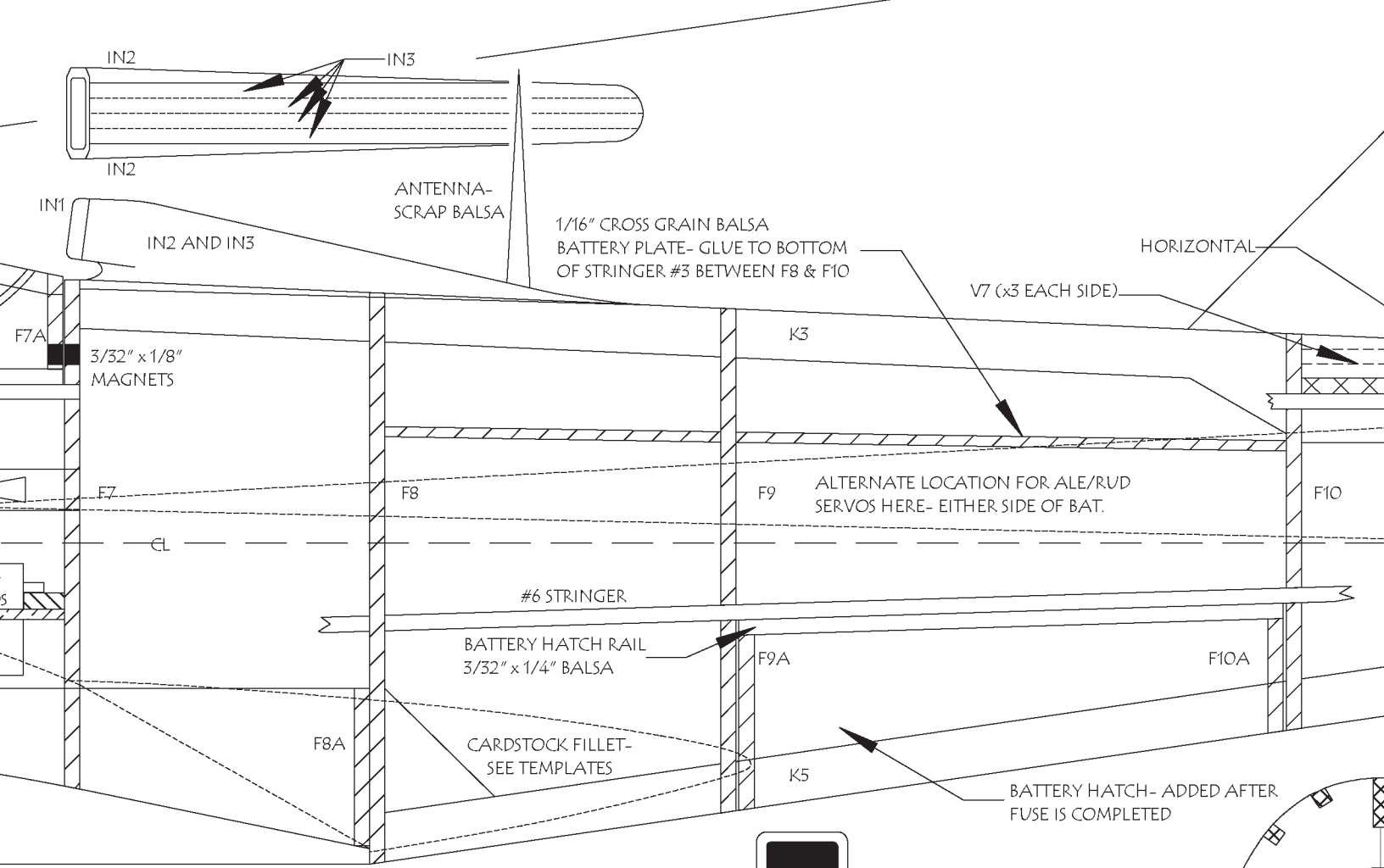


CARDSTOCK DUCTING- SEE TEMPLATE

DUCTING HOLE



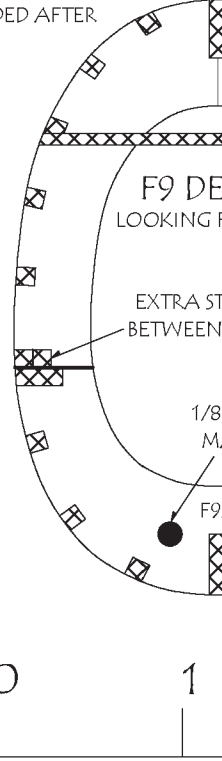
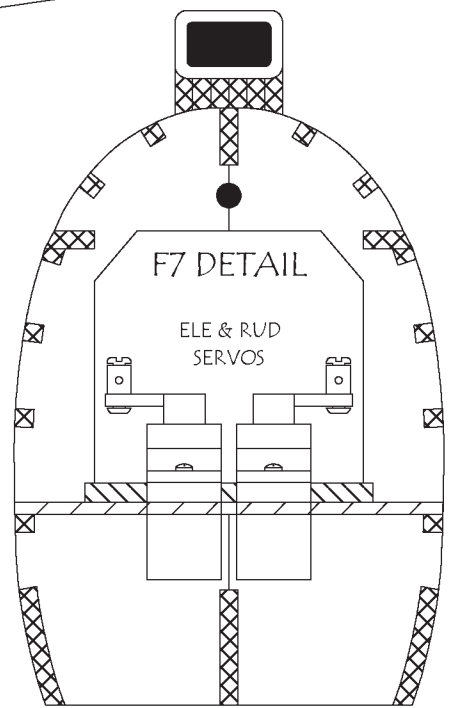
HEEL



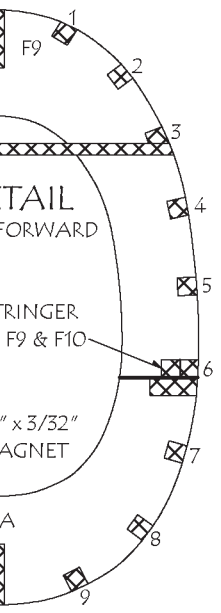
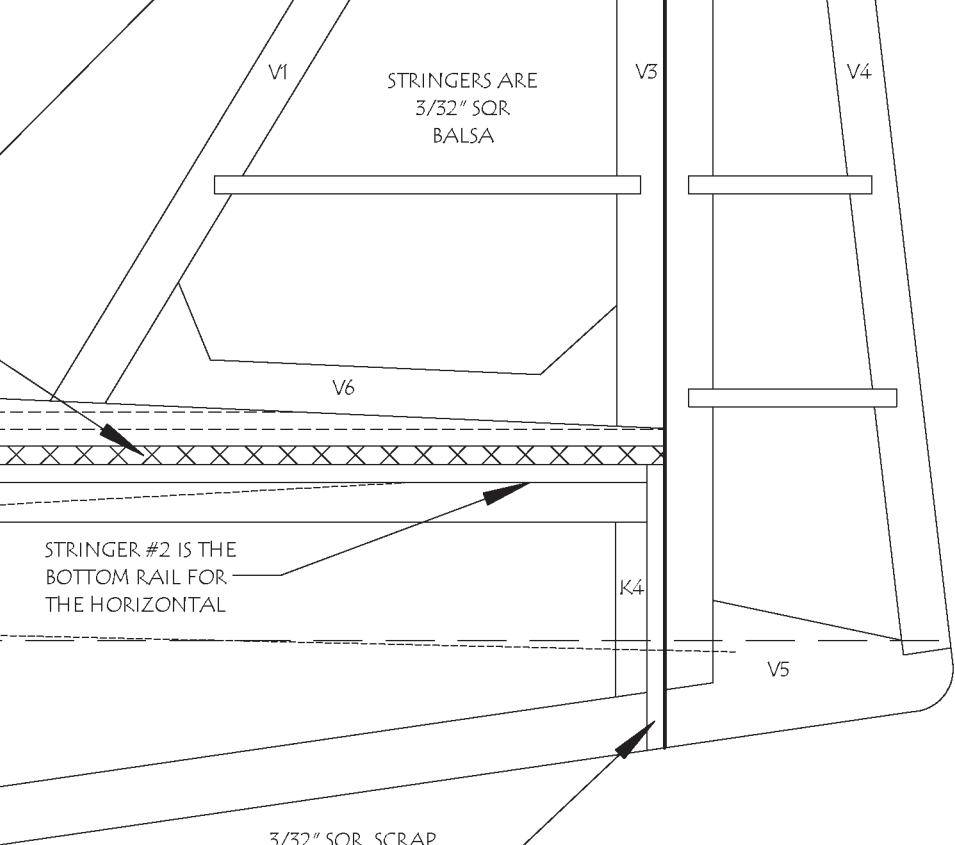
RECOMMENDED SET UP
 ALE +/- 1/4"
 ELE +/- 1/4"
 RUD +/- 3/8"

ELECTRONICS
 4 4.3G SERVOS
 2808 1800KV MOTOR
 10-12 AMP ESC
 2S 450 MAH LIPO PACK
 4-BLADE 7x4 PROP

MOTOR AND PROP FROM 750MM P-51
 BY VOLANTEX PART# RC768-1
 AVAILABLE FROM ALIEXPRESS.COM



WHEEL



Copyright 2022  and **ModelAviation**

**Copying for resale of this drawing without
the written approval or consent of AMA
is expressly prohibited.**

P-63 KINGCOBRA

DESIGNED BY DEREK MICKO
30" WINGSPAN
6-9 OUNCES
CHANNELS: 4
MOTOR: 24 GRAM
ALL RIGHTS RESERVED
SHEET 1 OF 2

