

(*) LOCATION OF BULKHEAD "A" MAY VARY DEPENDIN

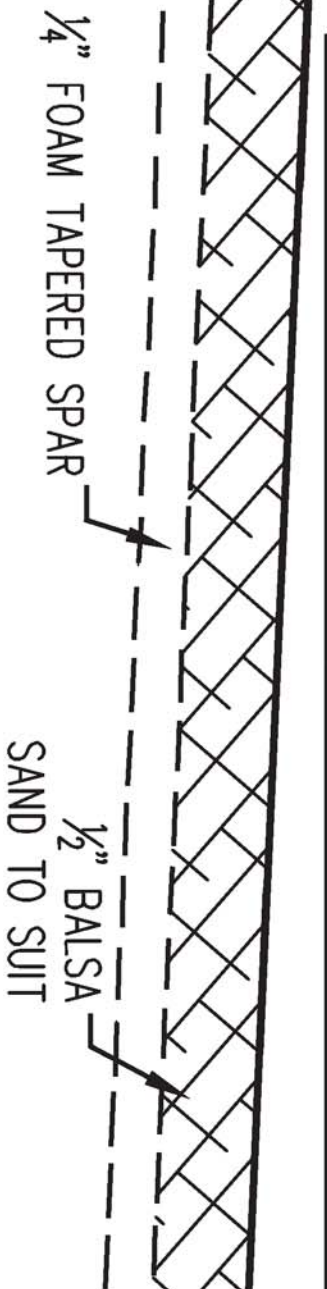
PLY DOUBLER FOR
MOTOR MOUNT

$\frac{1}{8}$ " PLY BULKHEAD.
1 REQUIRED

ENDING ON MOTOR USED.

TOP	B	$\frac{1}{4}$ " DEPRON BULKHEAD 1 REQUIRED
-----	---	--------------------------------------------------

TOP	C	$\frac{1}{4}$ " DEPRON BULKHEAD 1 REQUIRED
-----	---	--------------------------------------------------

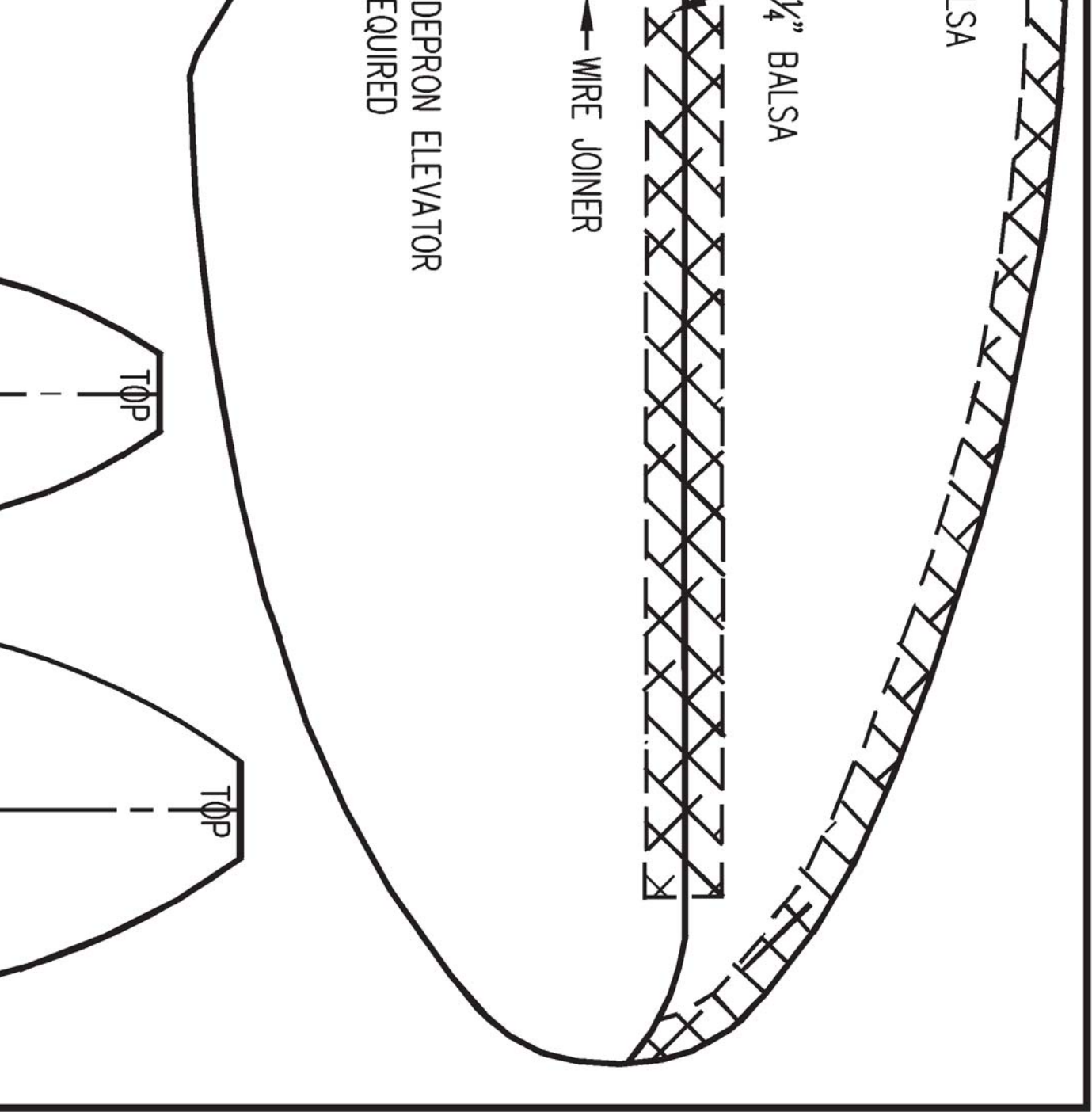


Balsa

1/4" Balsa

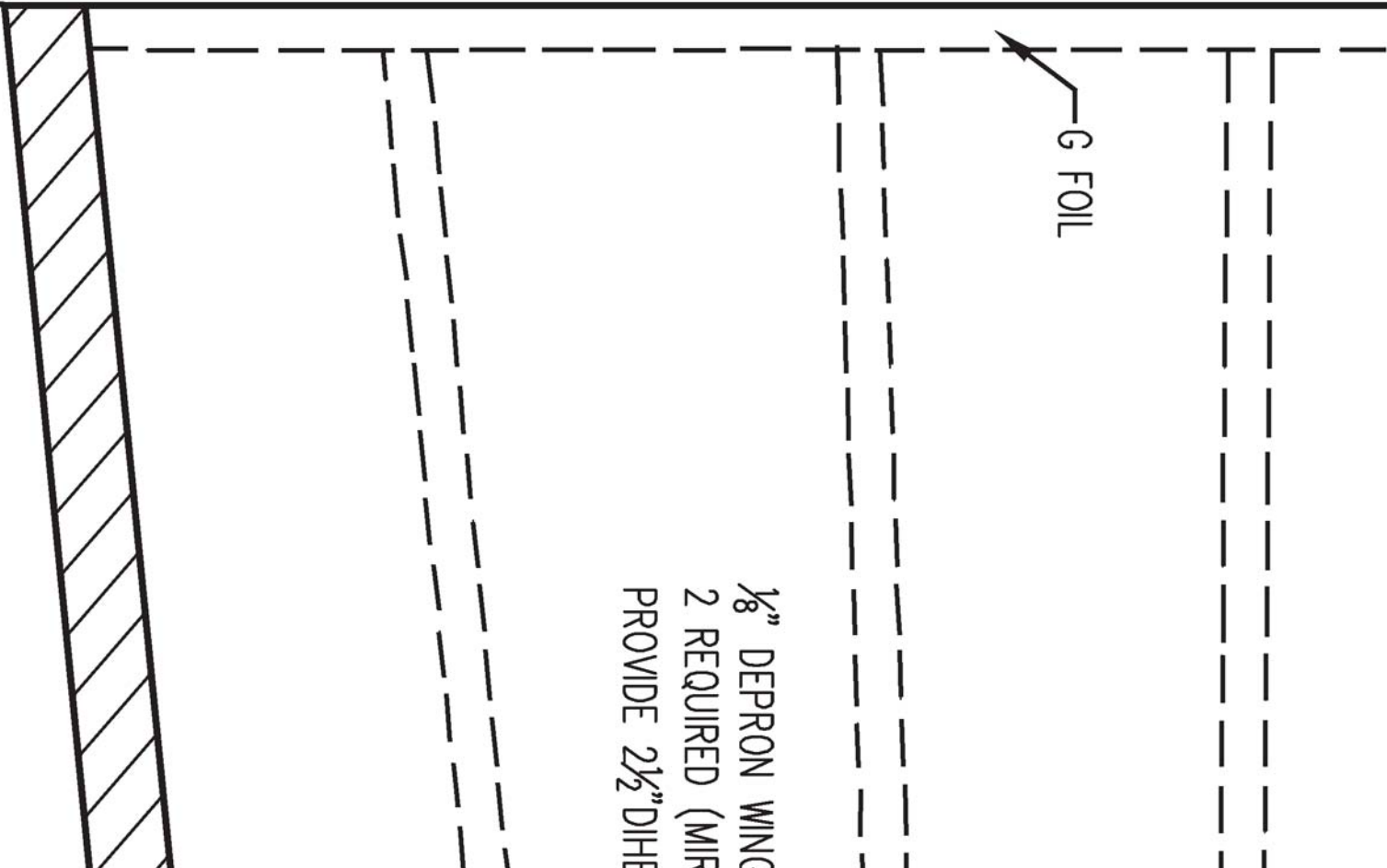
→ WIRE JOINER

DEPRON ELEVATOR
REQUIRED

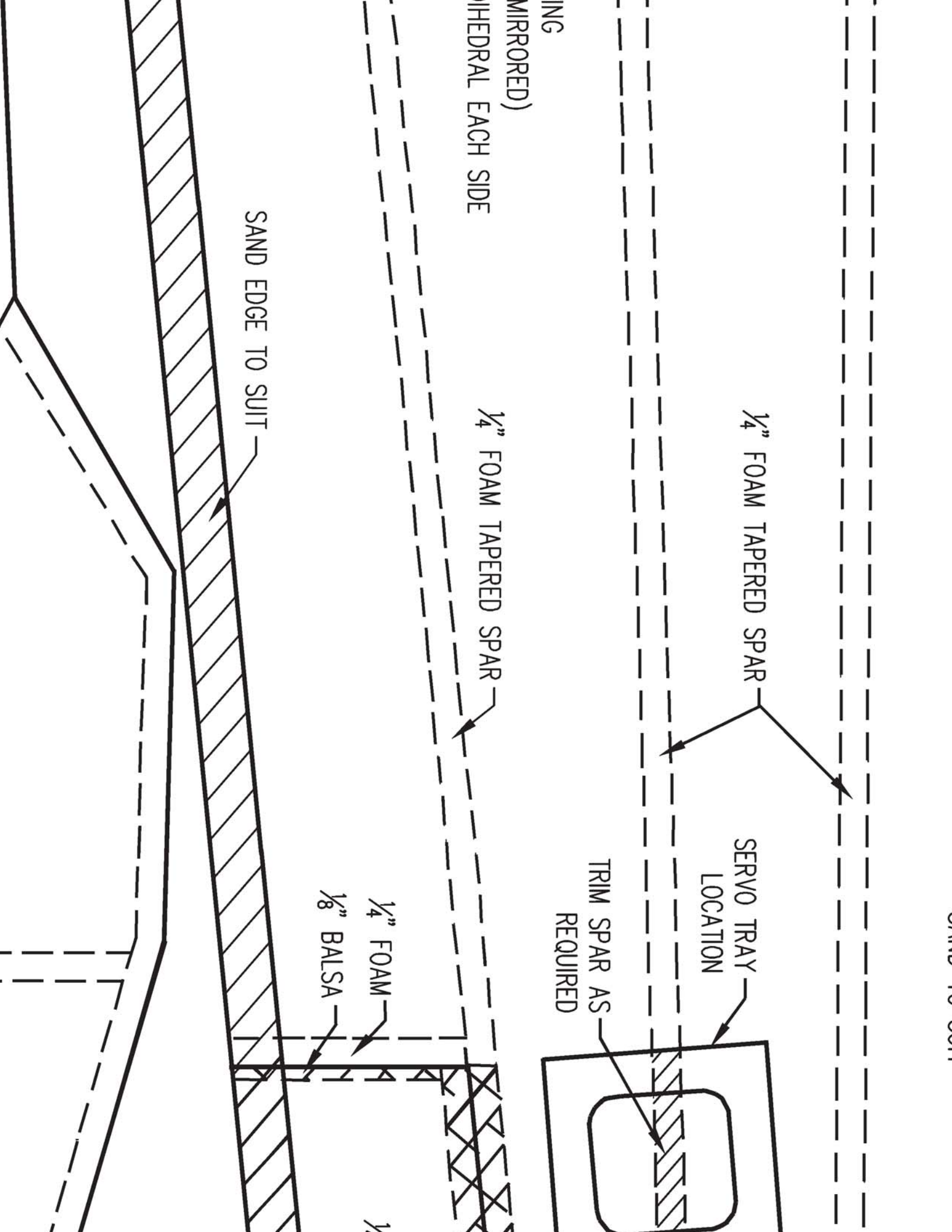


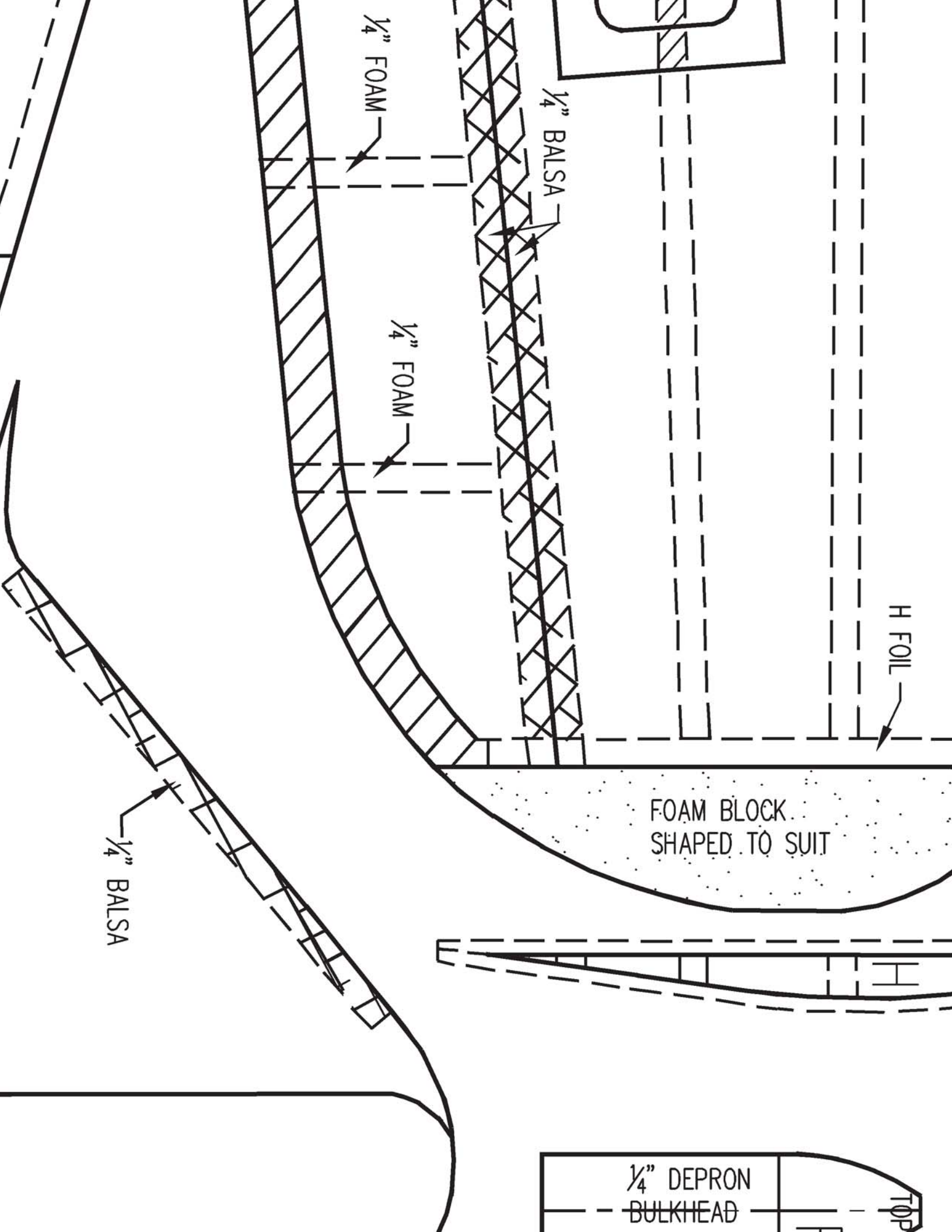
TOP

TOP



1/8" DEPRON WING
2 REQUIRED (MIR
PROVIDE 2 1/2" DIHE





1/4" FOAM

1/4" Balsa

1/4" FOAM

H FOIL

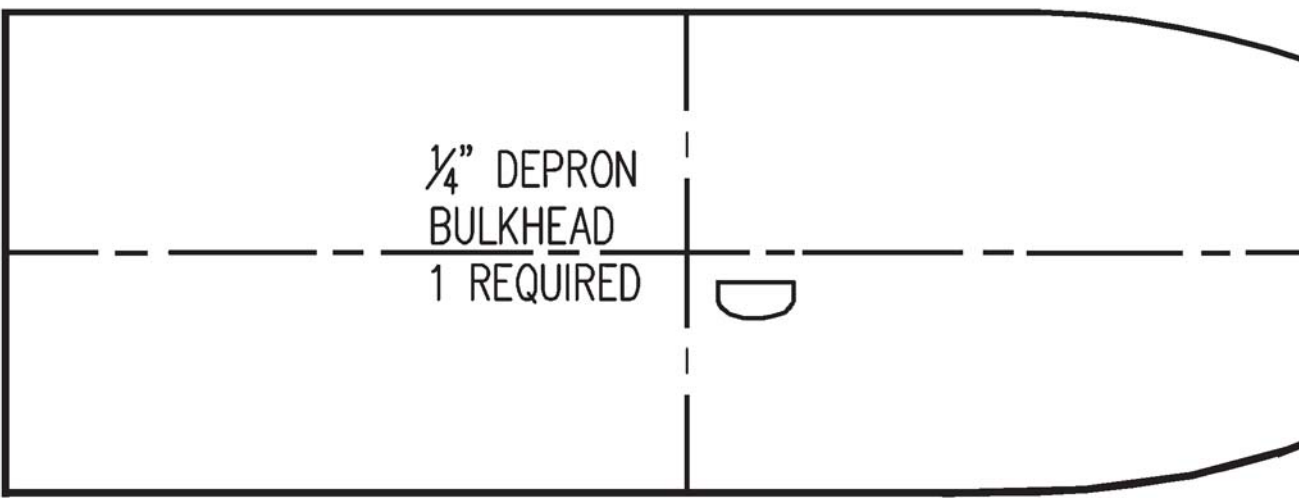
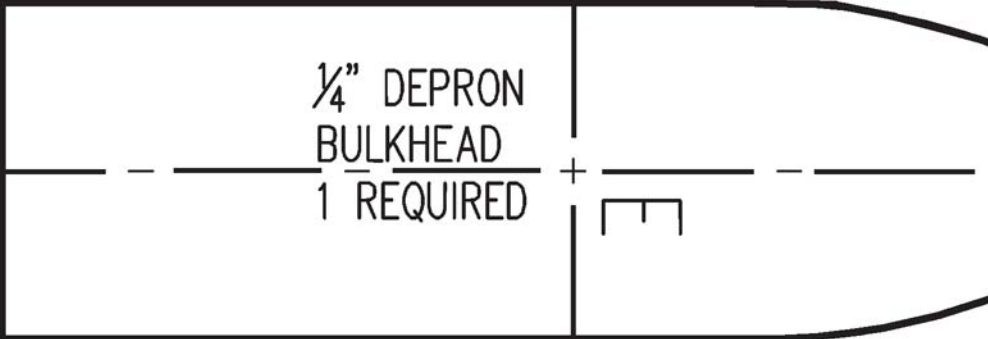
FOAM BLOCK
SHAPED TO SUIT

1/4" Balsa

1/4" DEPRON
BULKHEAD

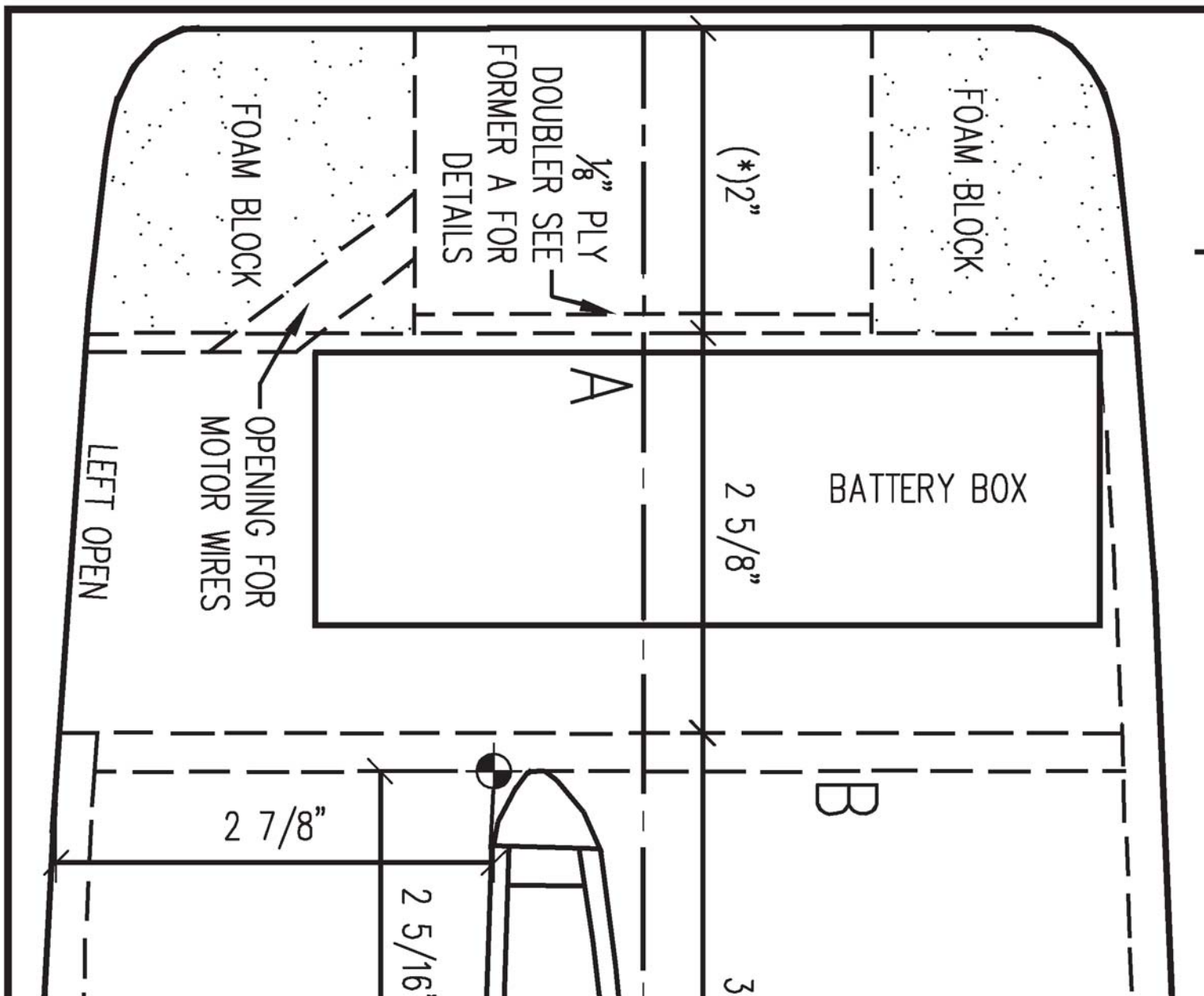
TOP

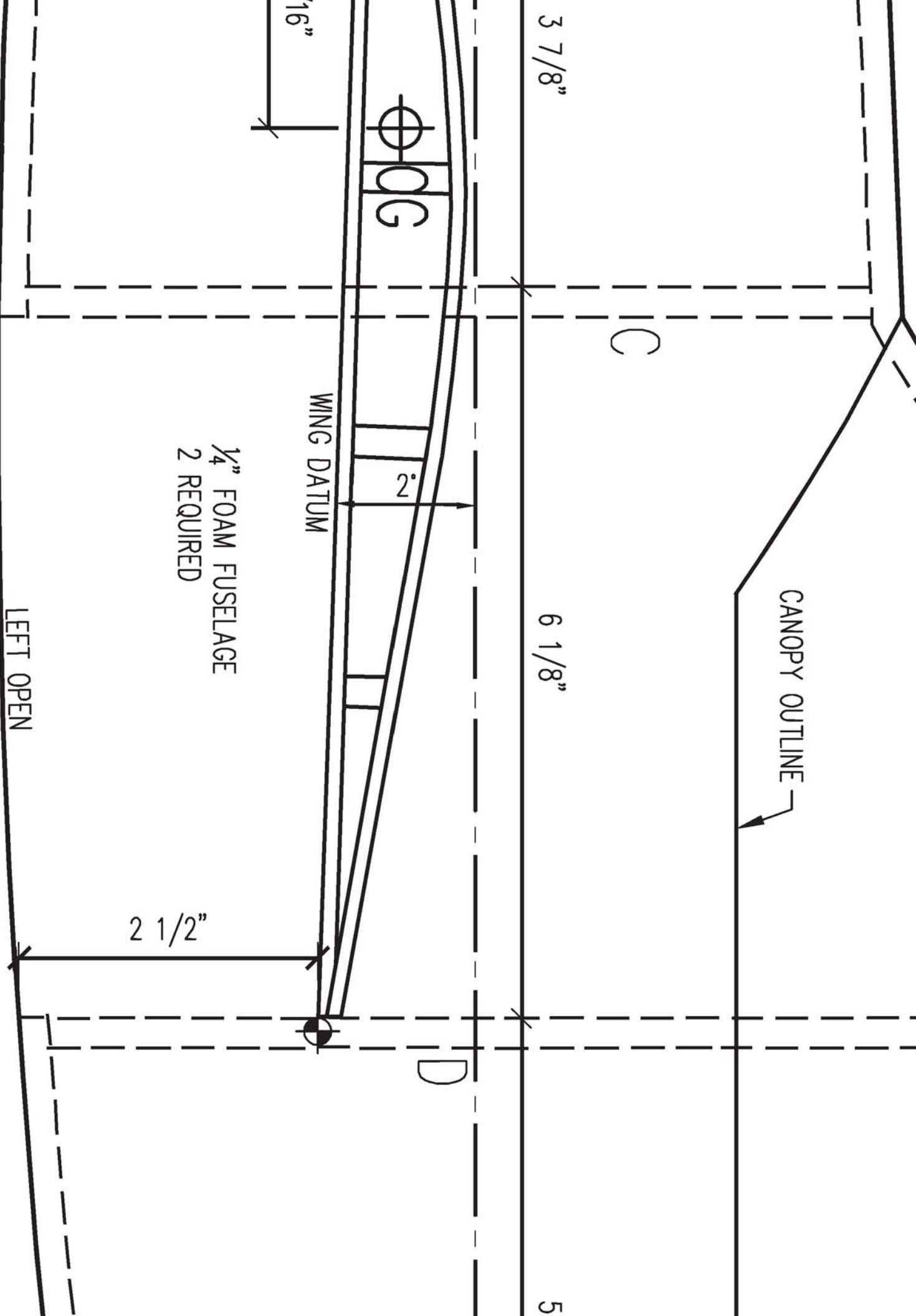
BULKHEAD
1 REQUIRED



NOTES:

- WINGS SPAN: 47"
- WING LOADING: 390in², 2.7ft², 12.5 APPROX.





1/4" DEPRON
1 REQUIRED

RULE

5 3/8"

5 5/8"

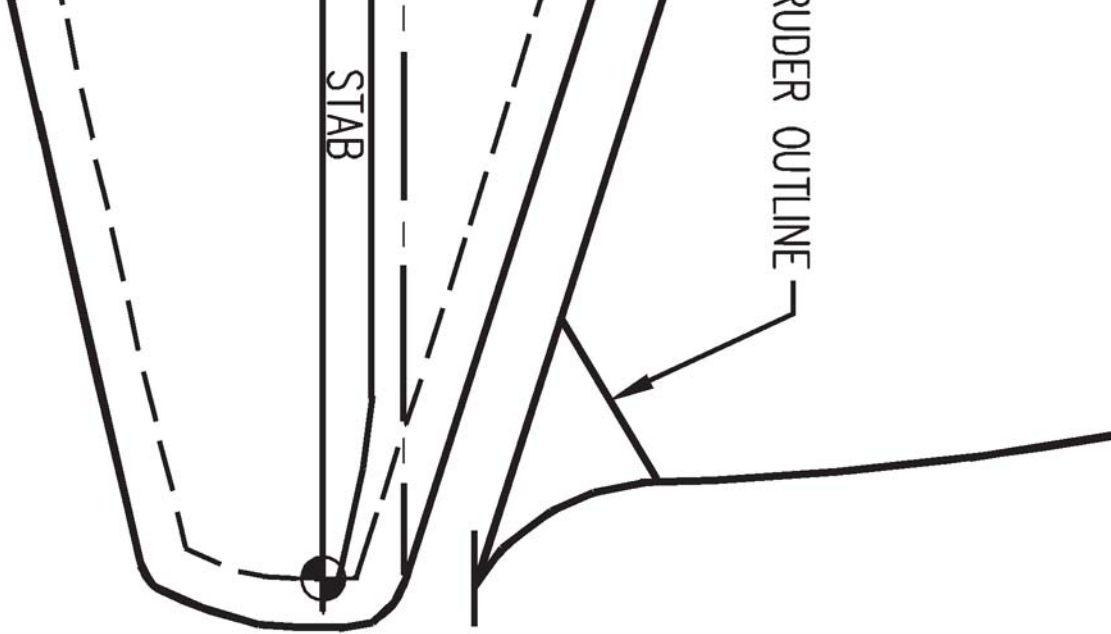
F

F

7/16"



12.5 APPROX.
-POWER SETUP: E-FLITE PARK
480, 25A CASTLE PHOENIX ESC,
APC 10X7E, 3S-2200, 200
WATTS @ 19A



Brewster
F2A Buffalo
Semi Profile

Rev-E Date: Mar.12,2015

Sheet Size: 24x36

Designed By: John Morgan

Drawn By: James Klassen

