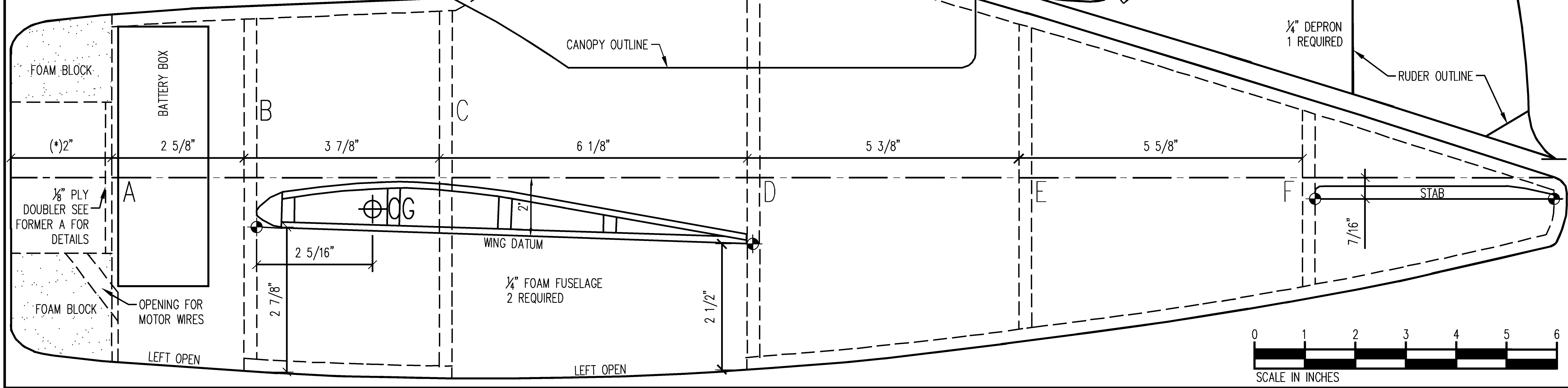
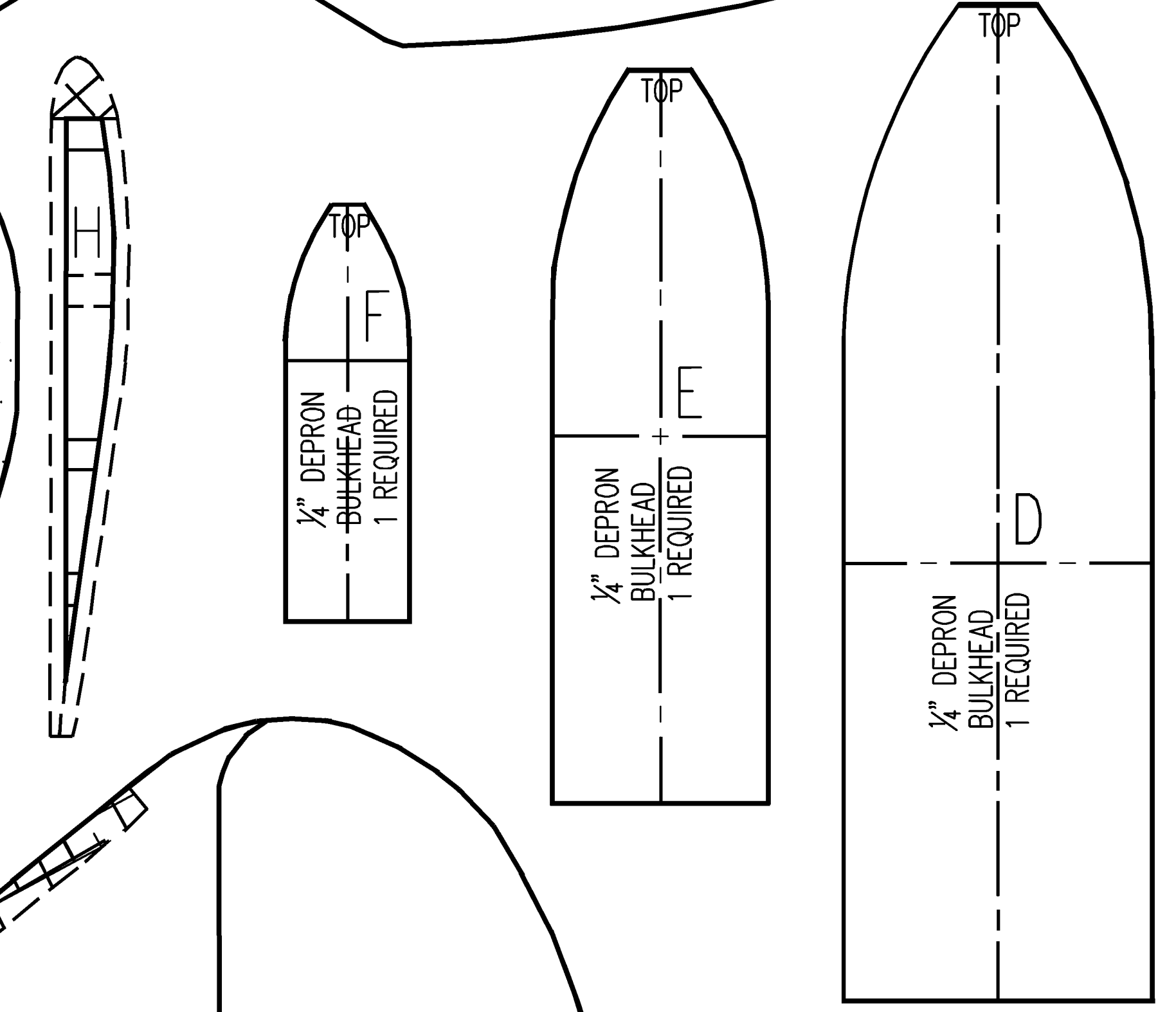
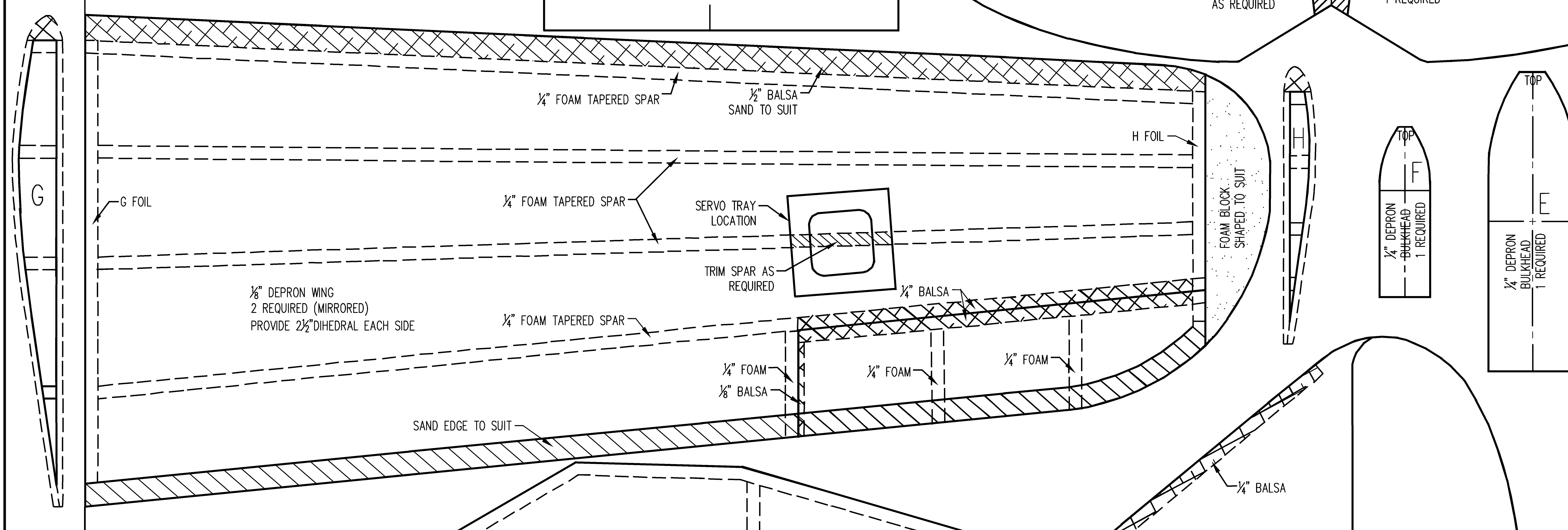
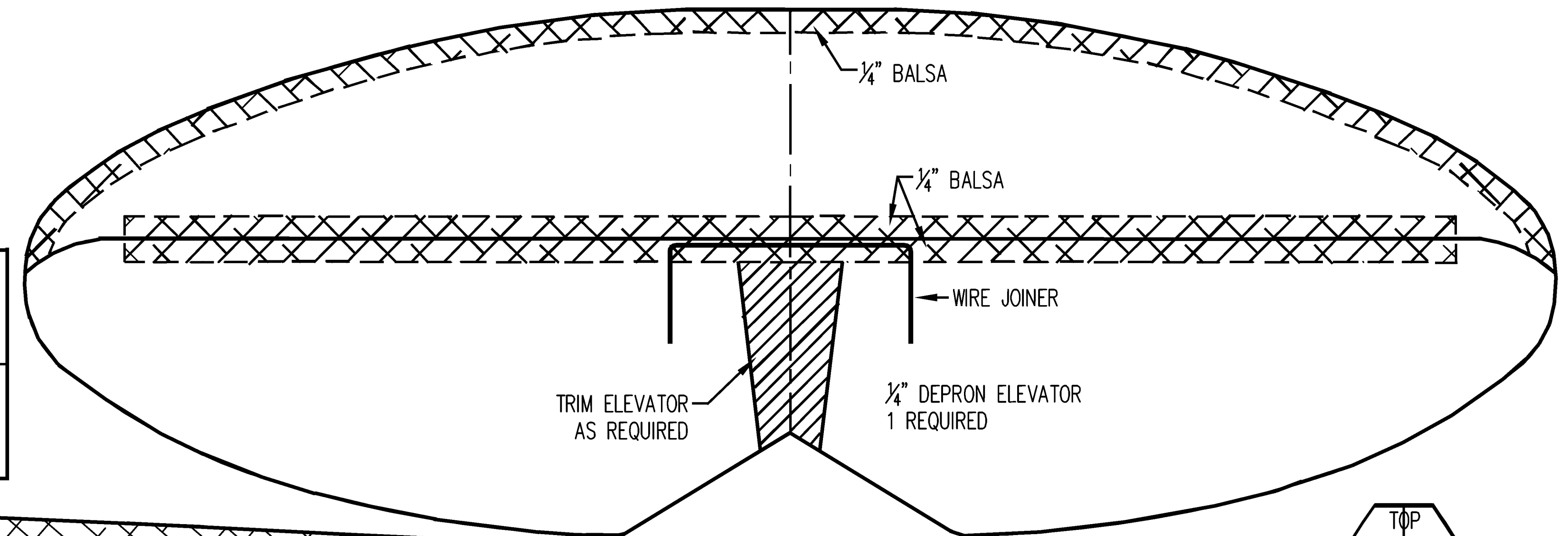
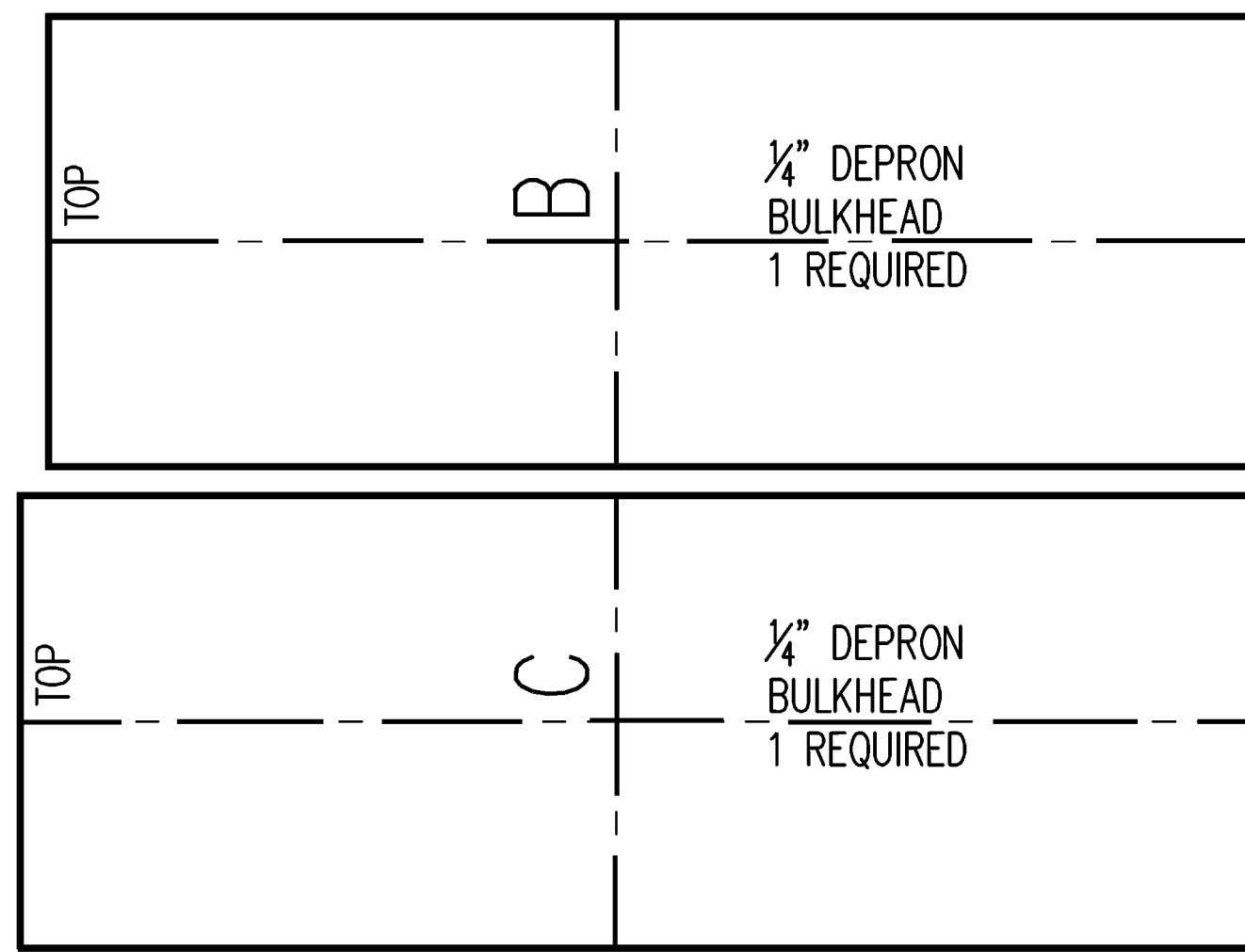


(*) LOCATION OF BULKHEAD "A" MAY VARY DEPENDING ON MOTOR USED.



NOTES:

- WINGS SPAN: 47"
- WING LOADING: 390in², 2.7ft², 12.5 APPROX.
- POWER SETUP: E-FLITE PARK 480, 25A CASTLE PHOENIX ESC, APC 10x7E, 3S-2200, 200 WATTS @ 19A

Brewster
F2A Buffalo
Semi Profile

Rev-E Date: Mar.12,2015
Sheet Size: 24x36
Designed By: John Morgan
Drawn By: James Klassen

