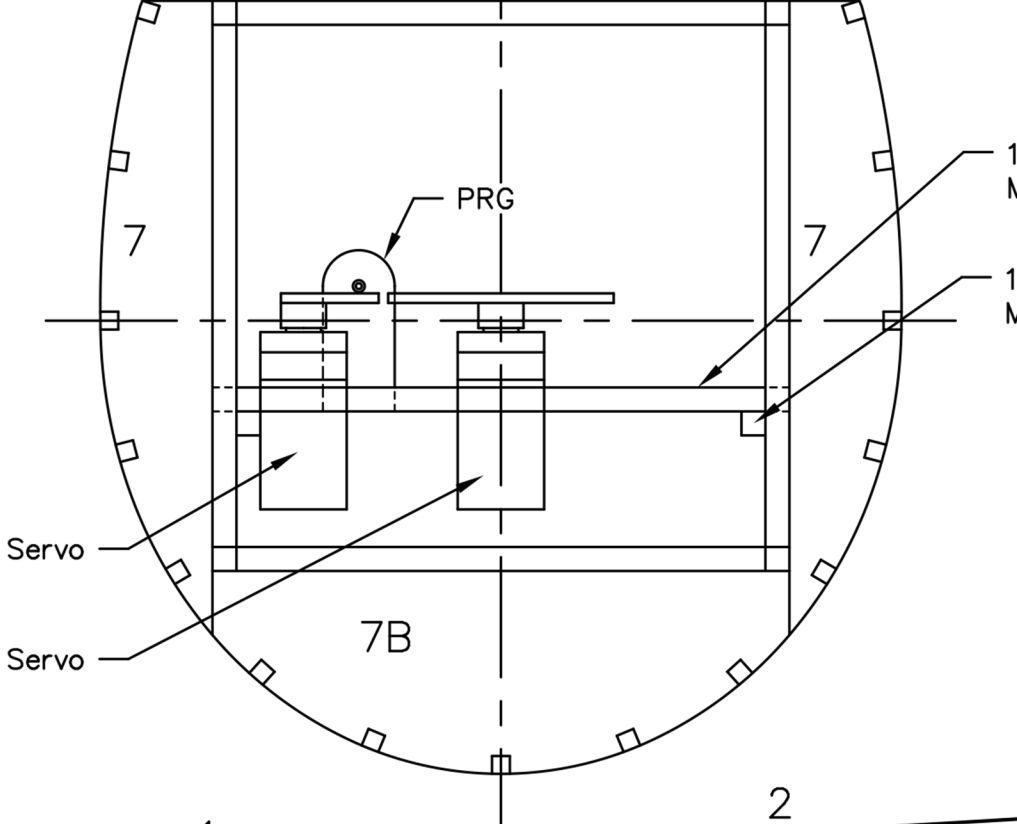
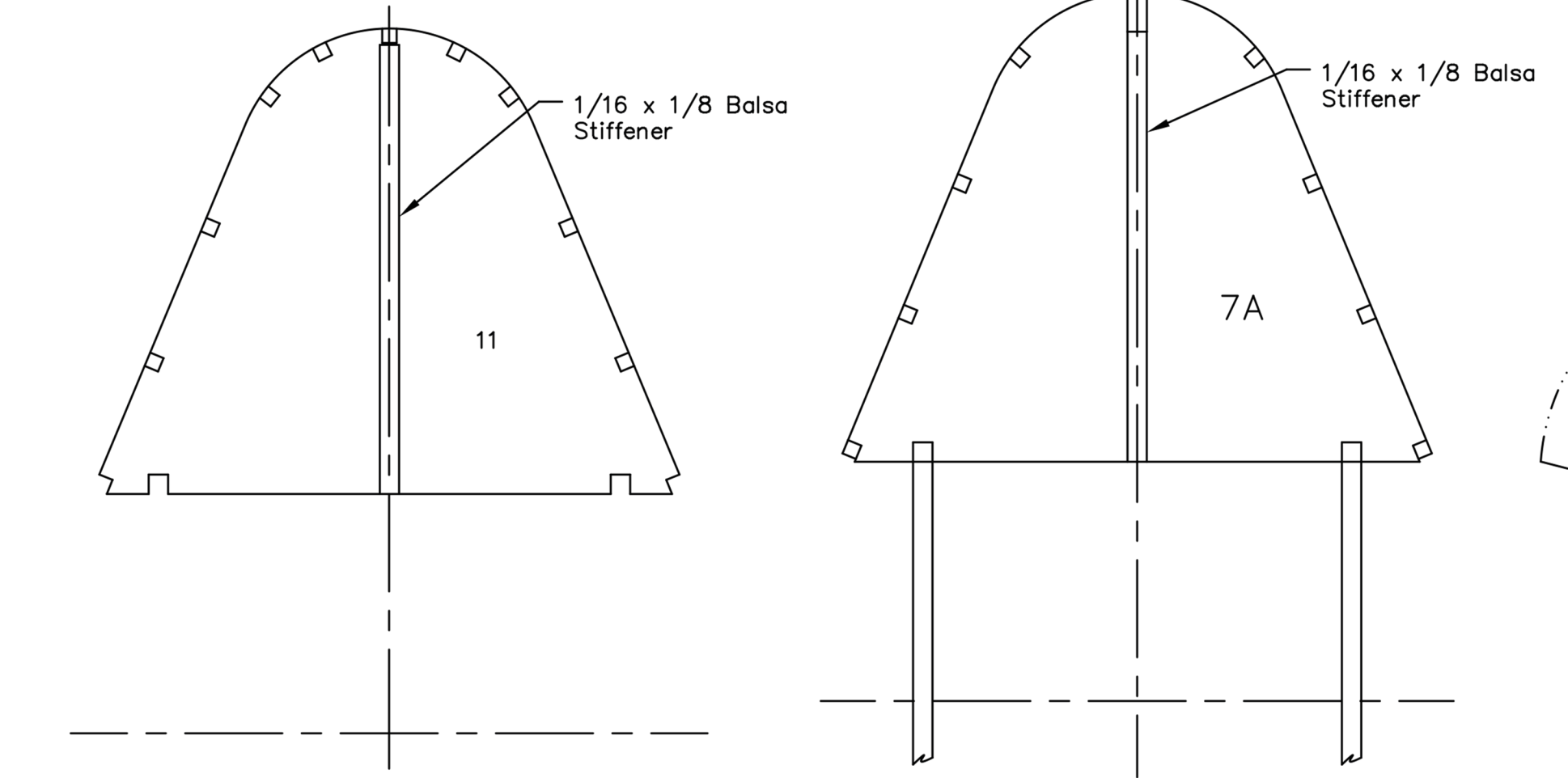
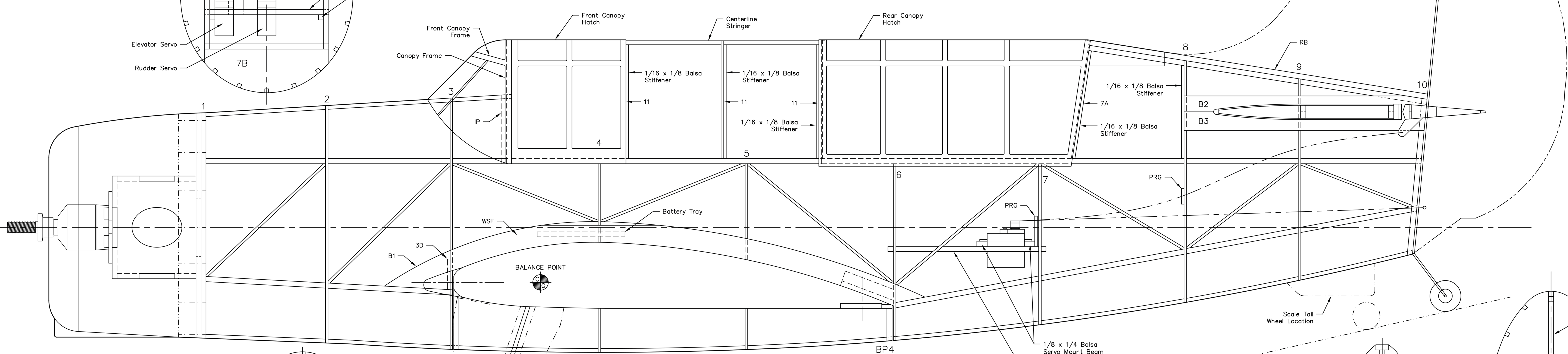


Note: Place Washers Under the Motor Mount on the Left Side to get 1.5 Degrees of Right Thrust

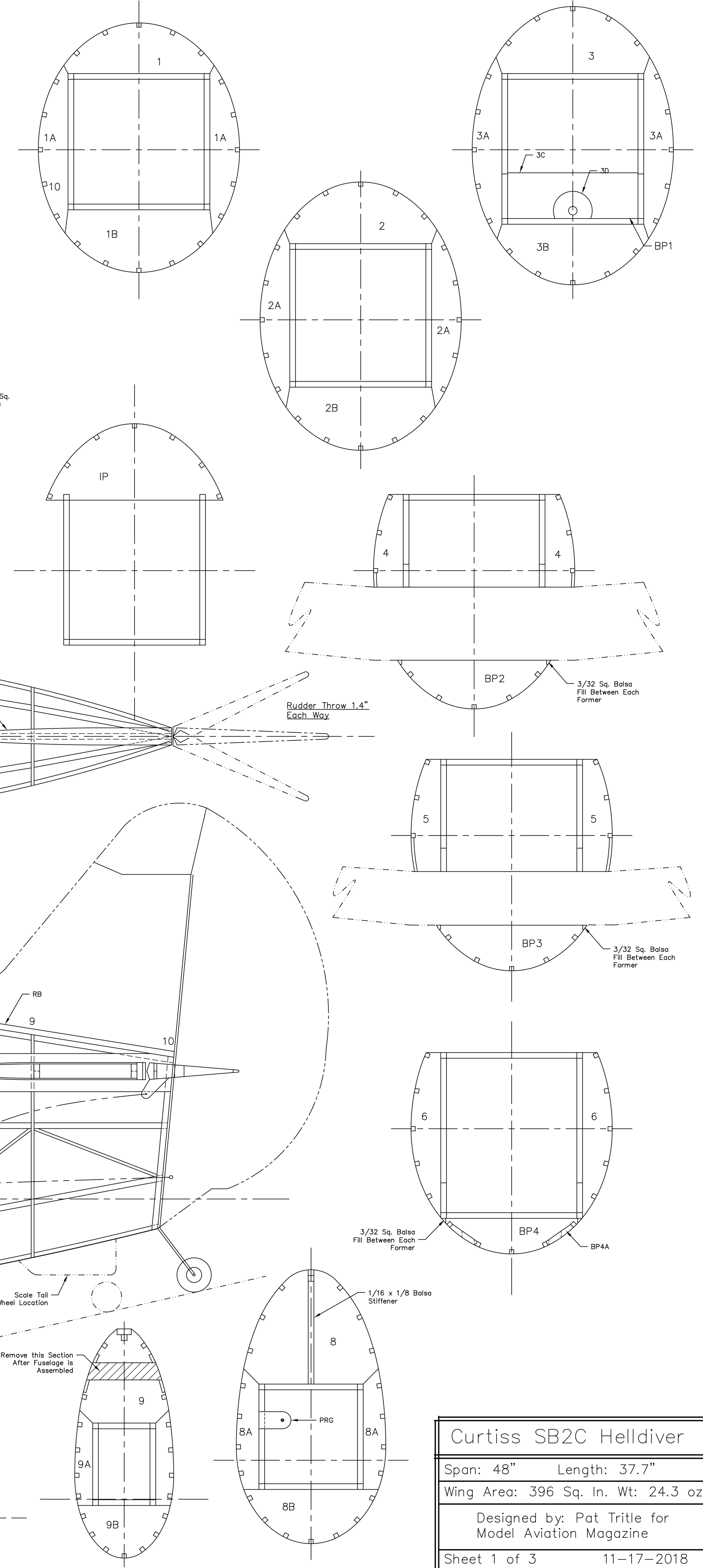


Note: The Fuselage Stringers have been Omitted from the Drawing to Reduce the Clutter. When the Stringers are Installed their Routing will Become Obvious

Note: The Rudder is Controlled Using Pull/Pull Cables. The Elevator is Controlled by a .025 Steel Pushrod in a 1/32 I. D. Plastic Tube. Support the Tube at the Exit Point with a 1/16 Balsa Guide Between the Stringers, and at the Servo Roll and 1 Point in Between Using the Pushrod Guides (PRG).



Note: All Fuselage Stringers are 3/32 Sq. Balsa. Start with the Centerline on each side and Allow the Stringers to Follow the Obvious Path Along the Formers. Then Work up and Down Until All of the Stringers are in Place.



Curtiss SB2C Helldiver	
Span: 48"	Length: 37.7"
Wing Area: 396 Sq. In. Wt: 24.3 oz.	
Designed by: Pat Tritle for Model Aviation Magazine	
Sheet 1 of 3	11-17-2018