

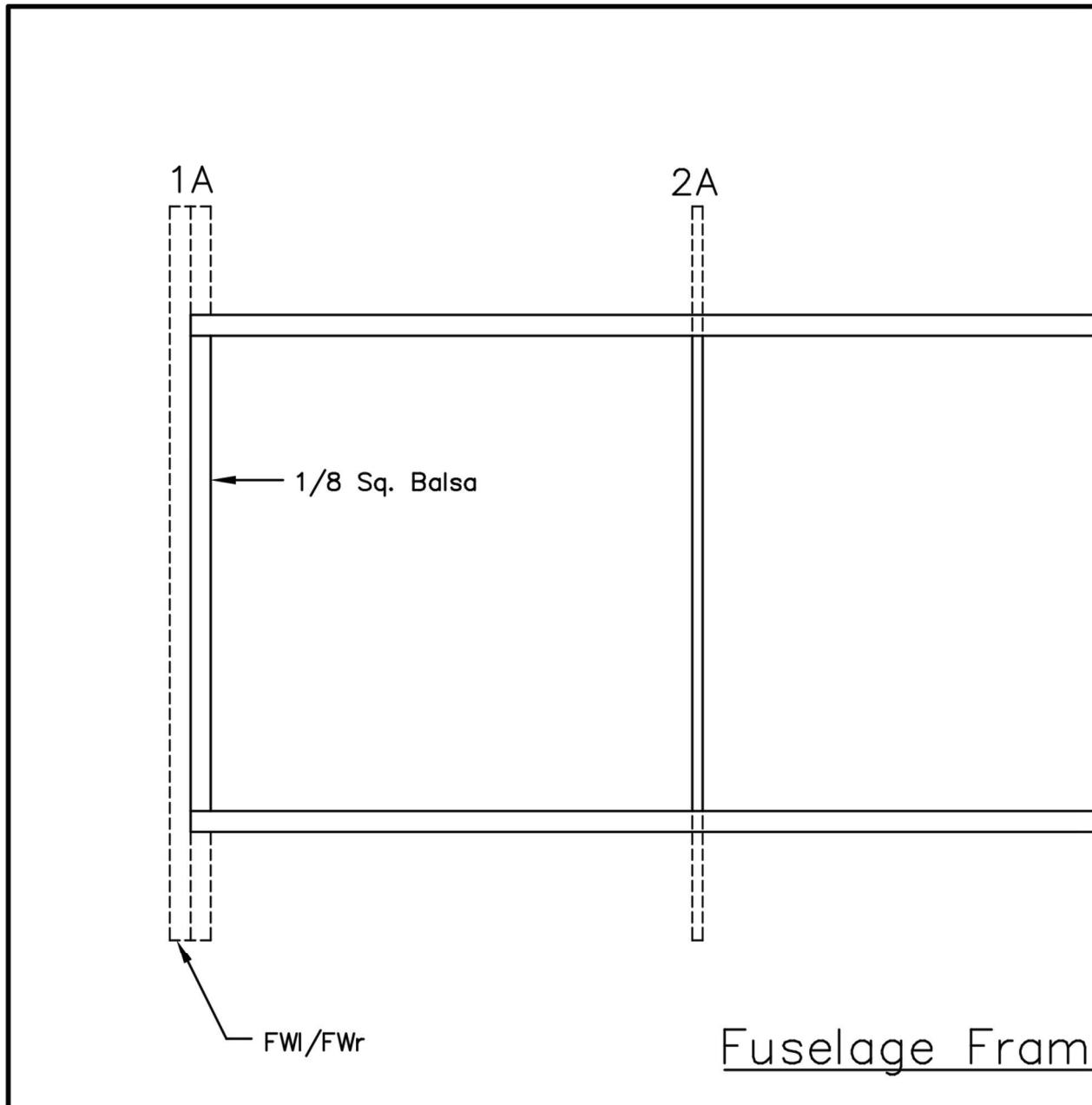
1A

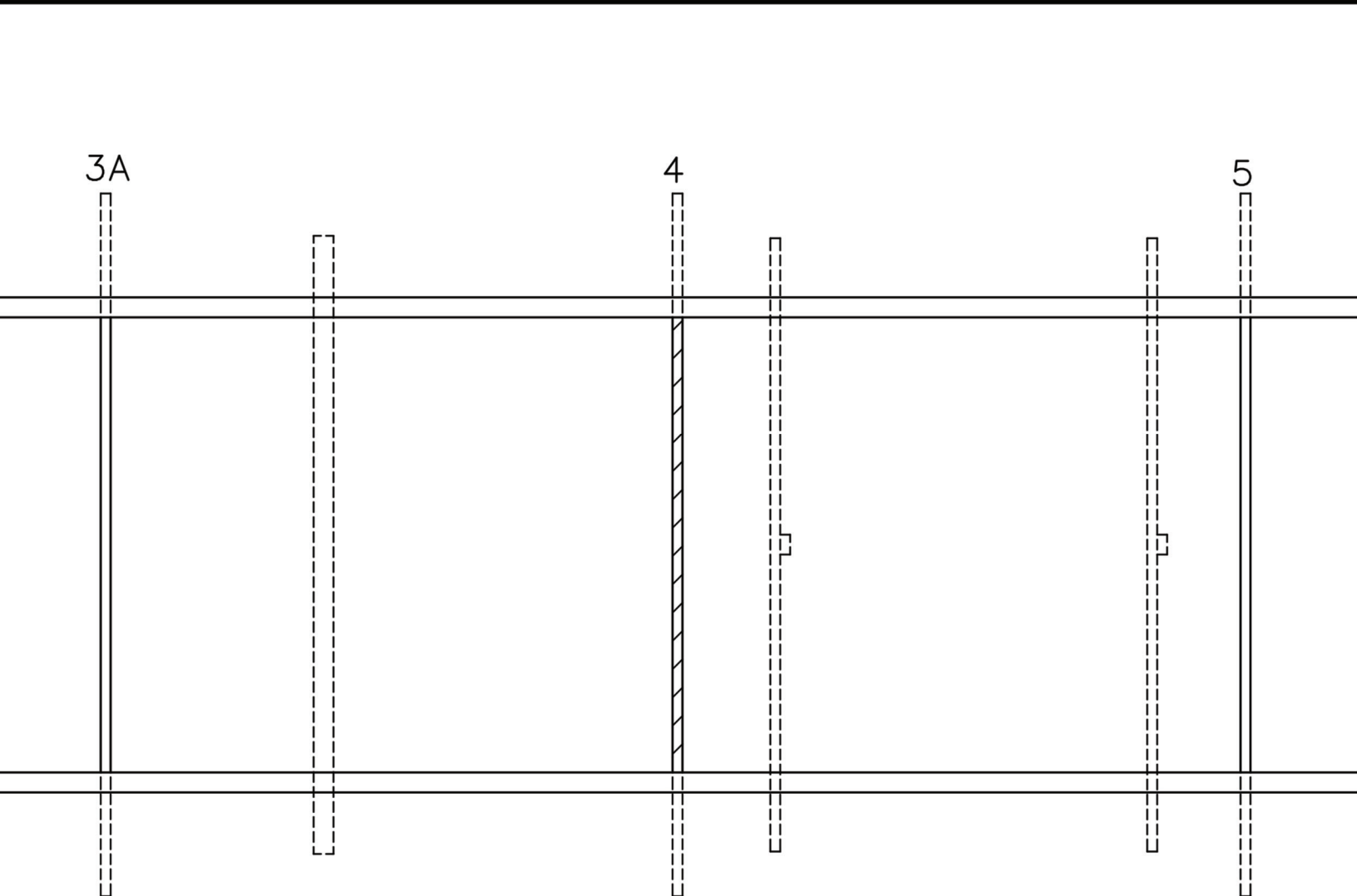
2A

1/8 Sq. Balsa

FWI/FWr

Fuselage Fram



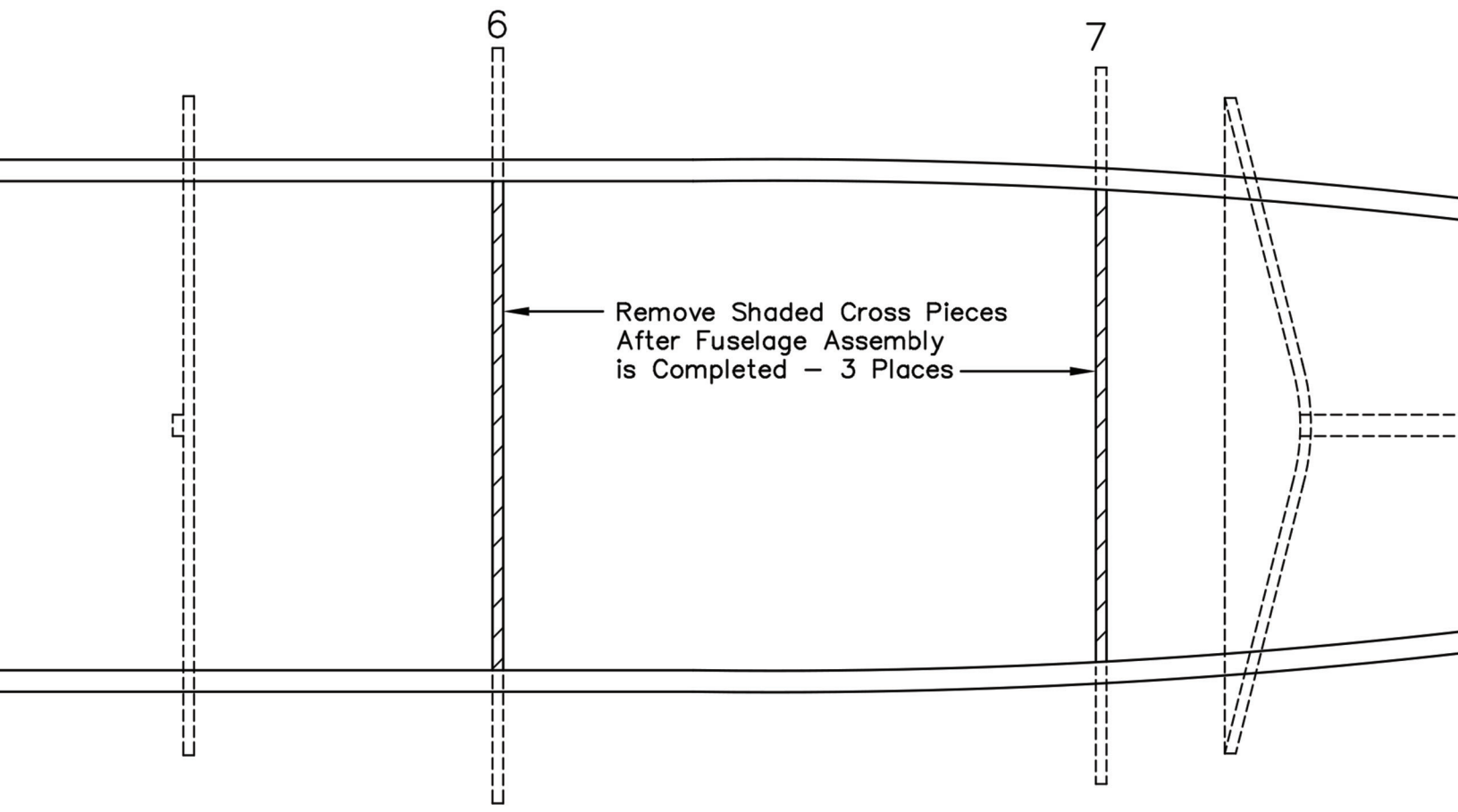


ing Plan

Canopy
Frame

11

11



6

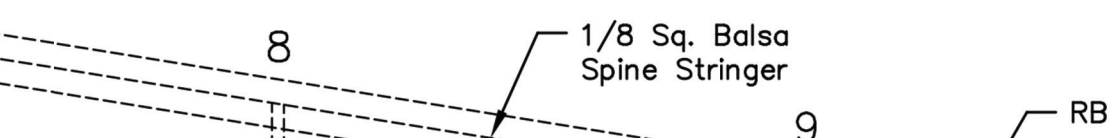
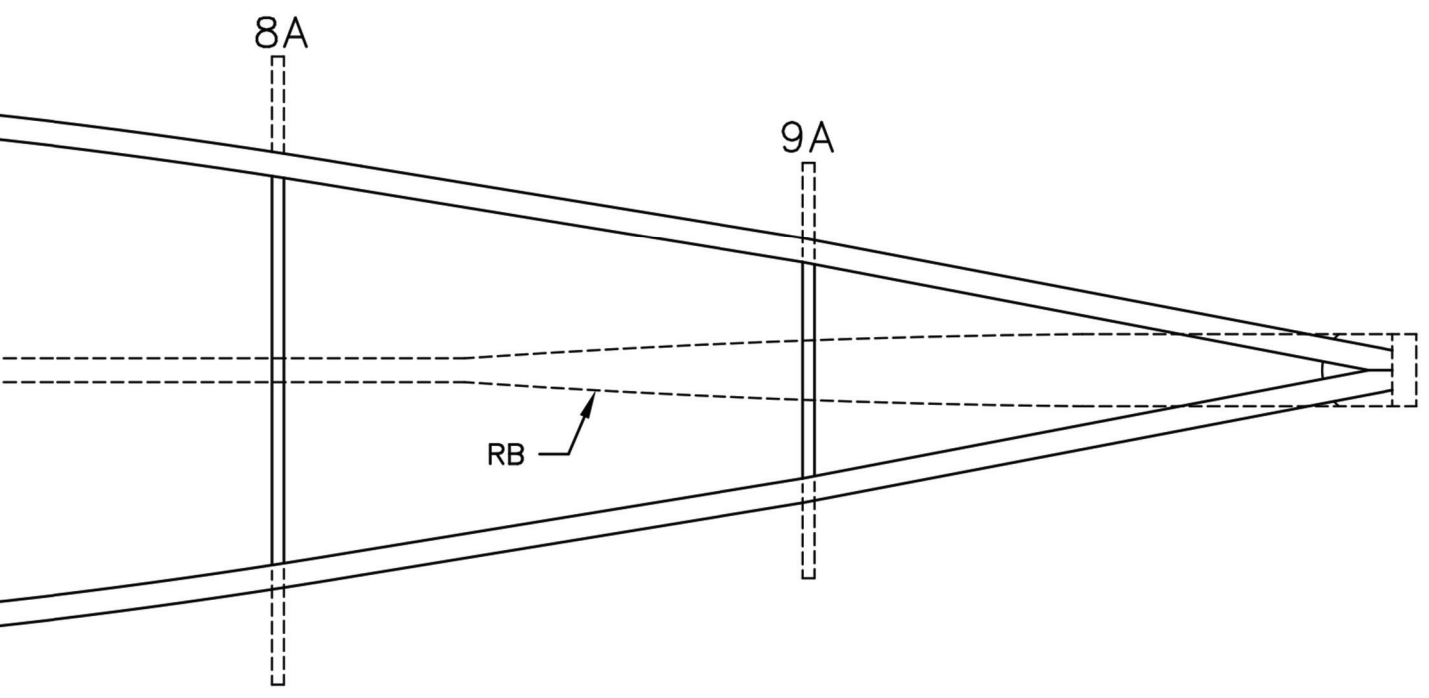
7

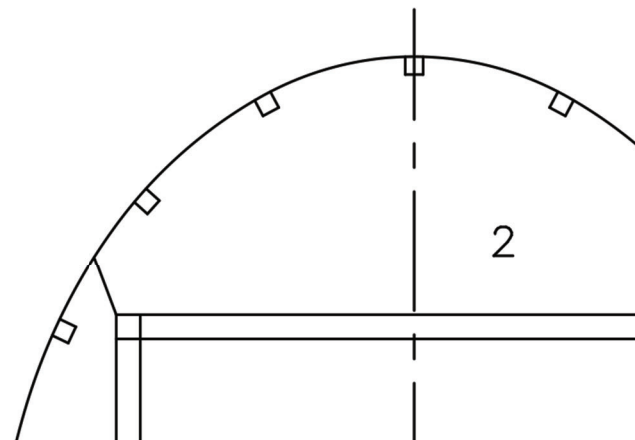
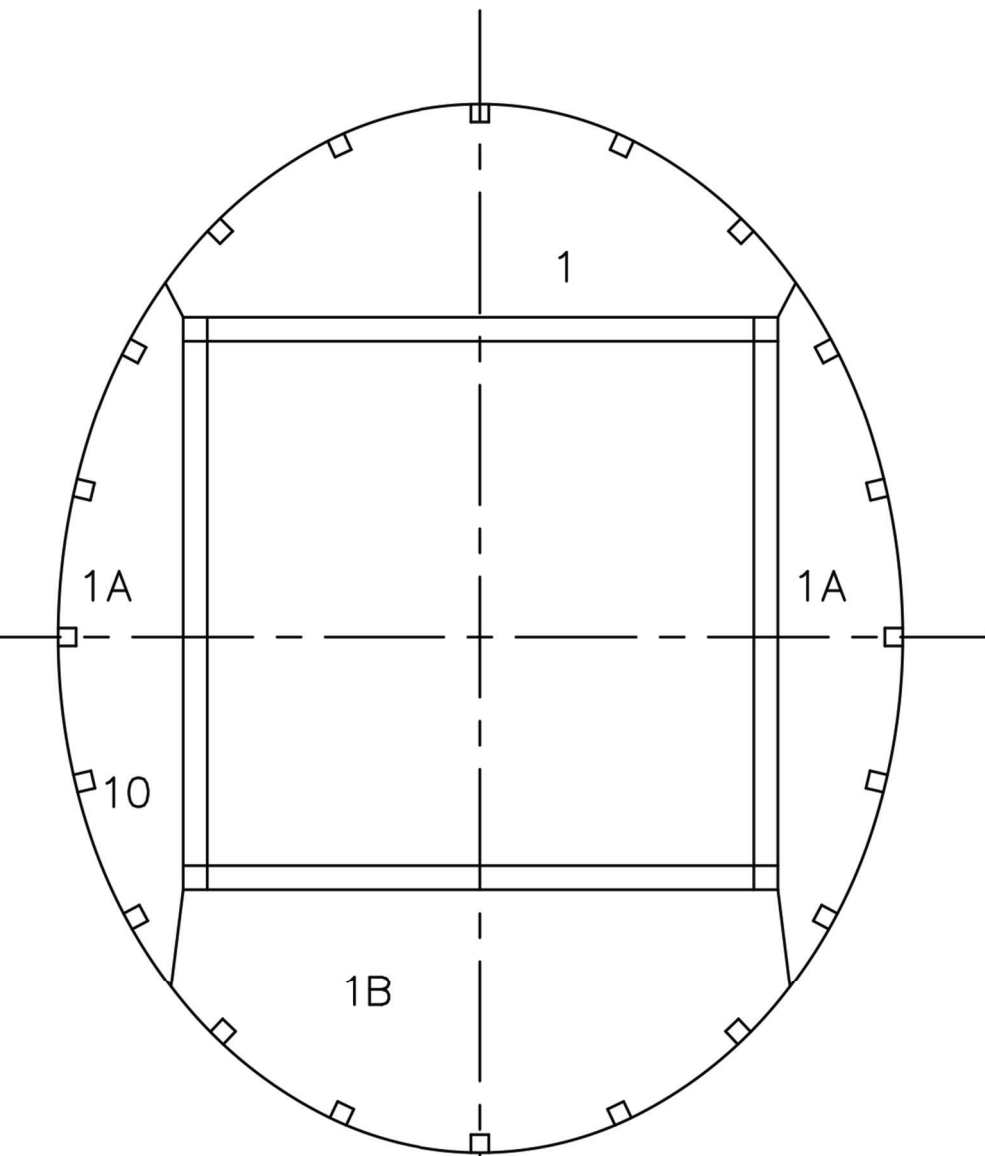
Remove Shaded Cross Pieces
After Fuselage Assembly
is Completed - 3 Places

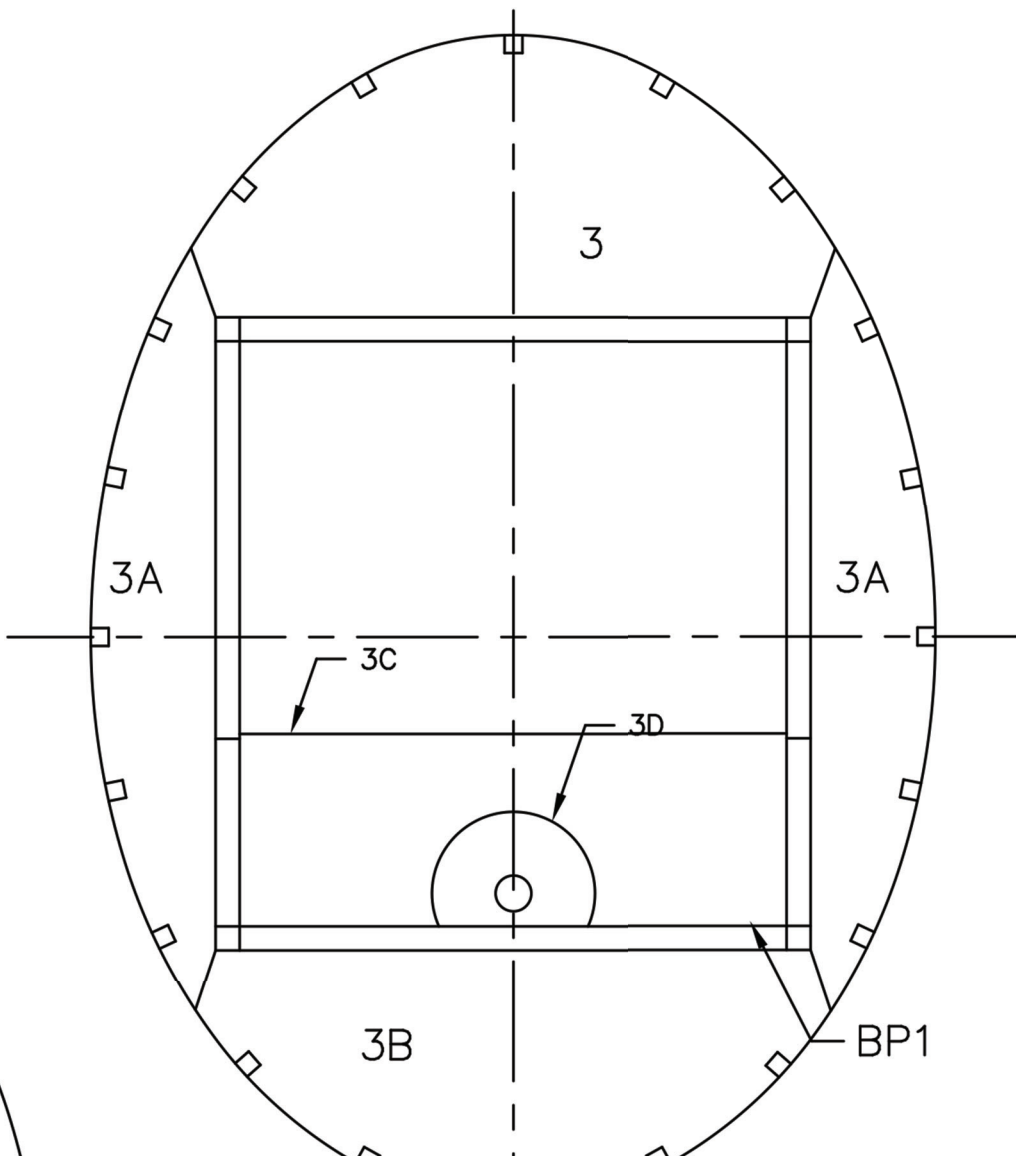
11

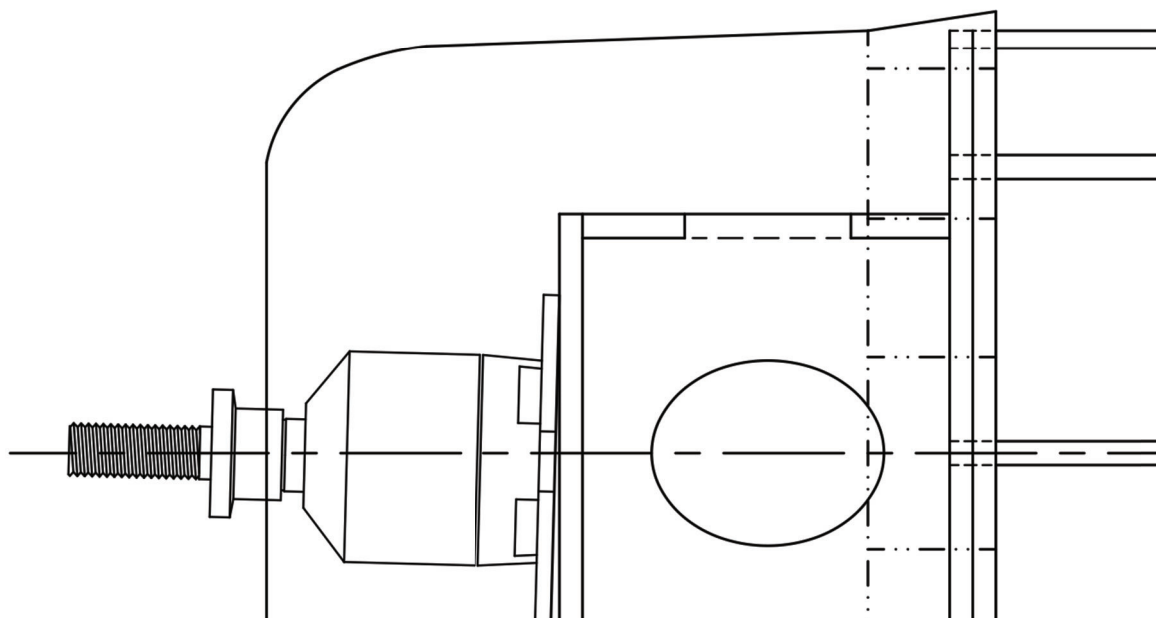
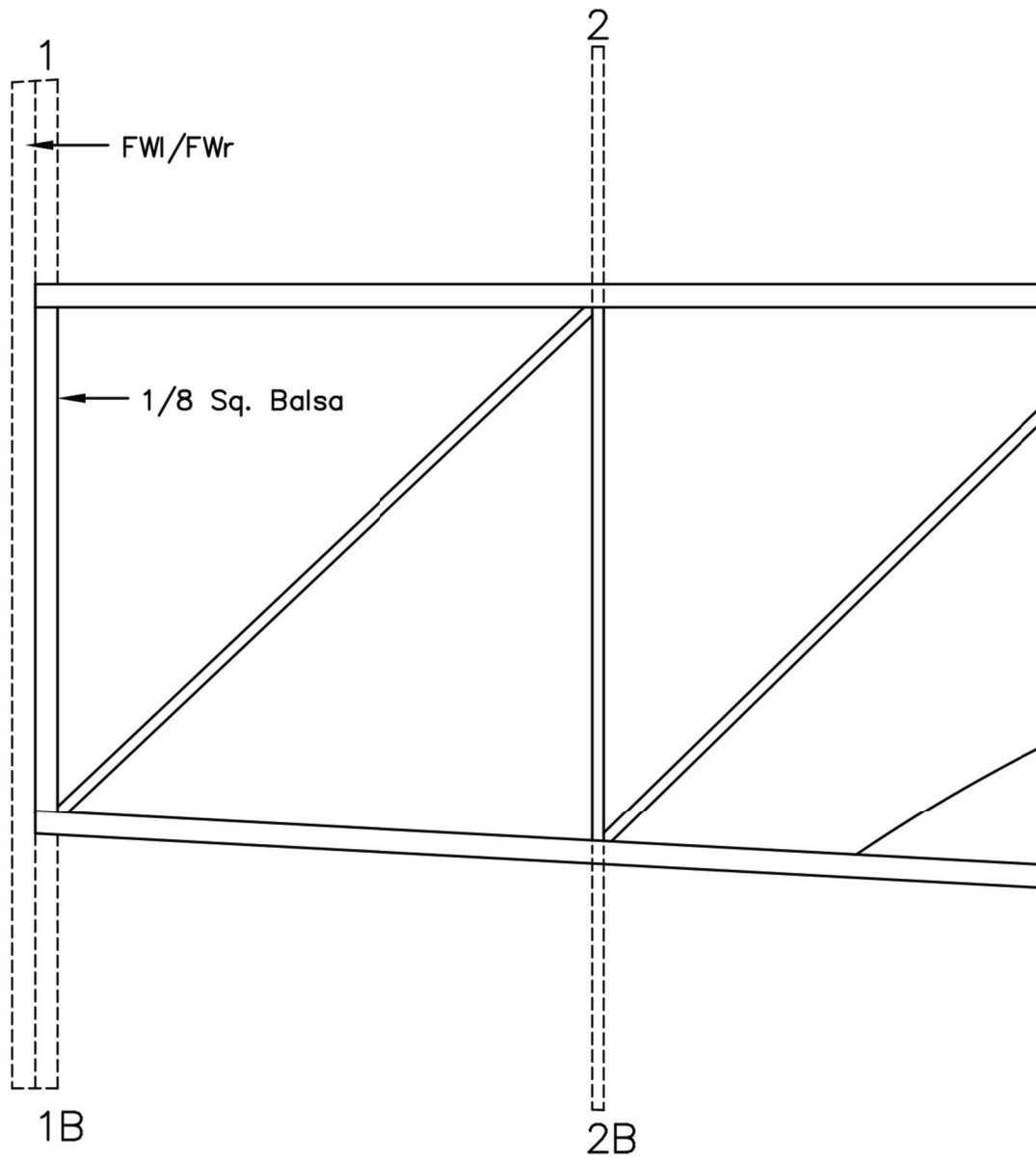
7A

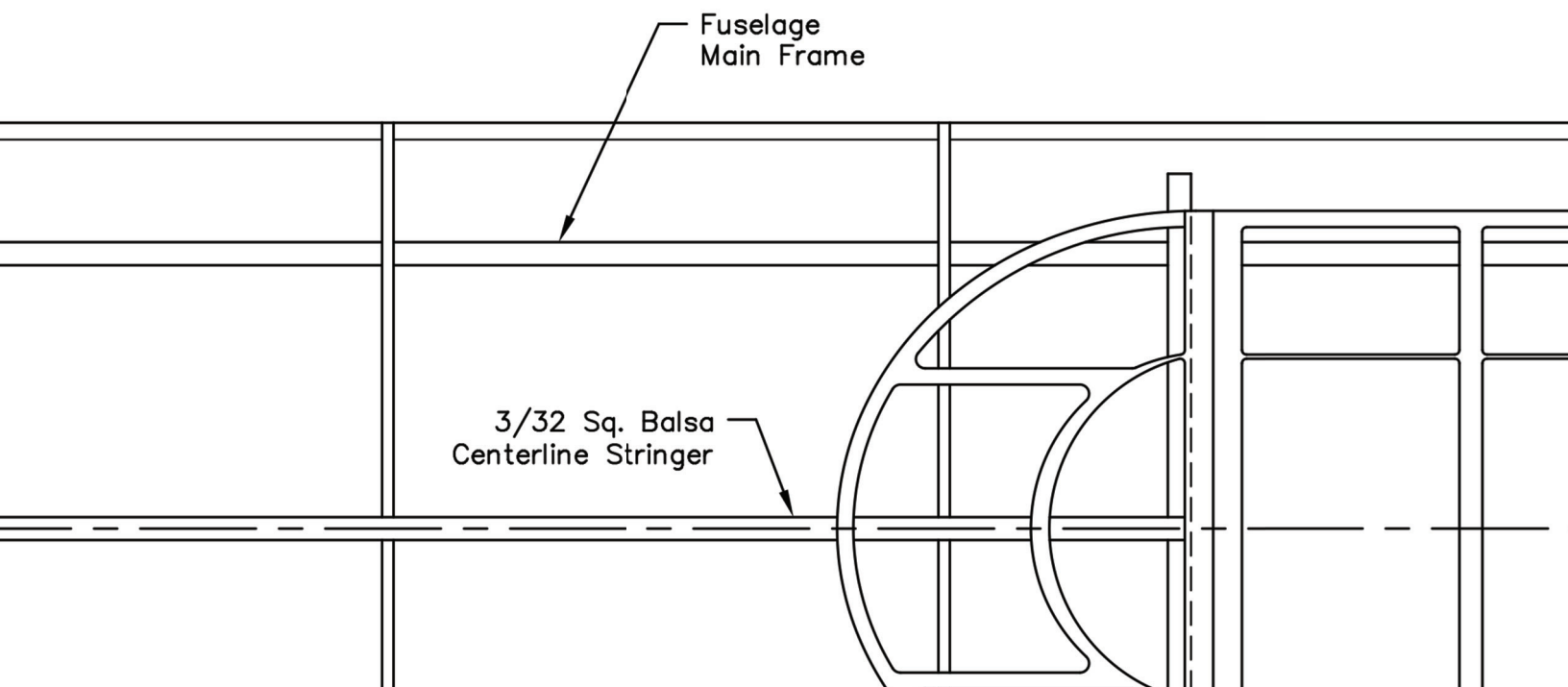
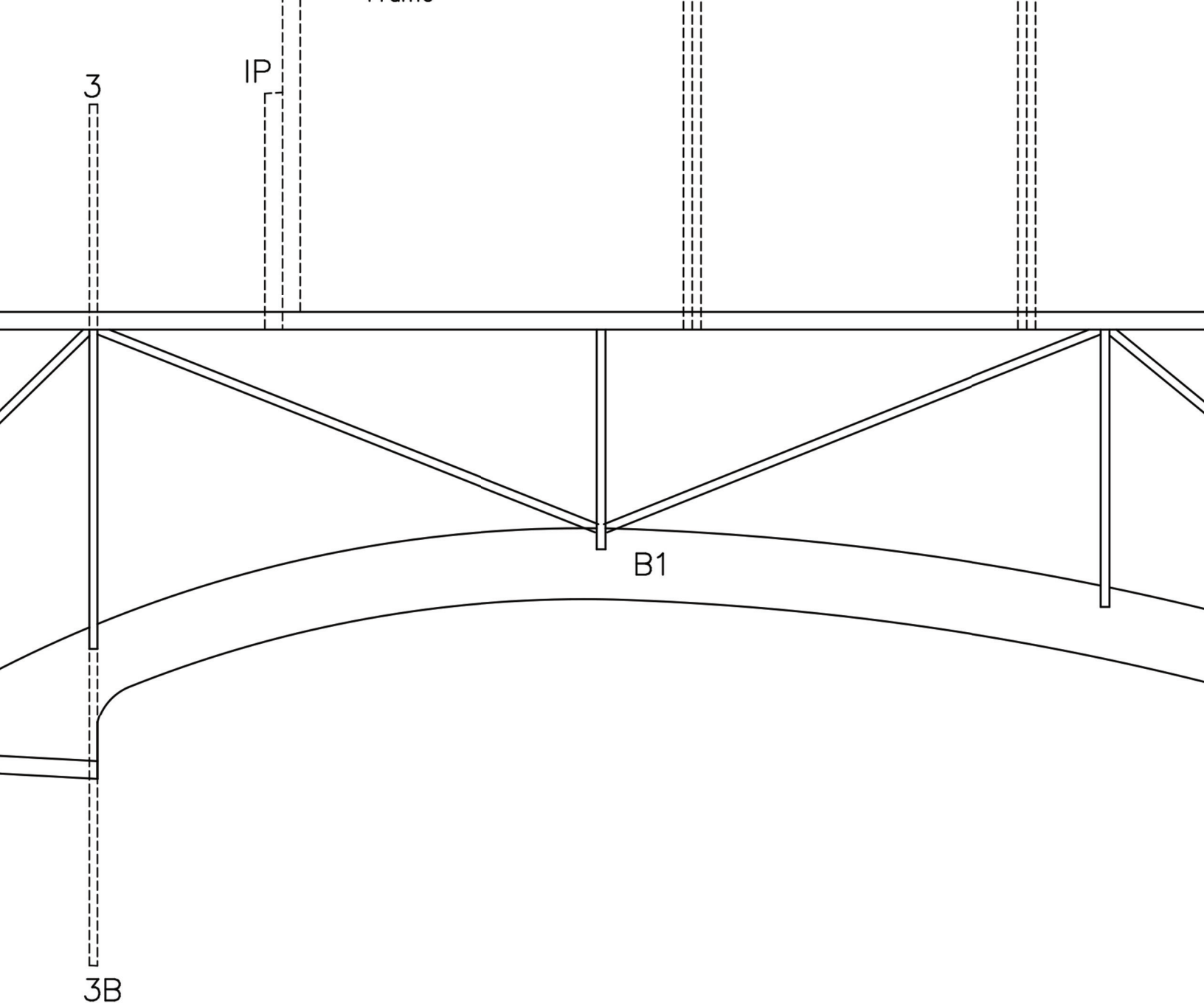




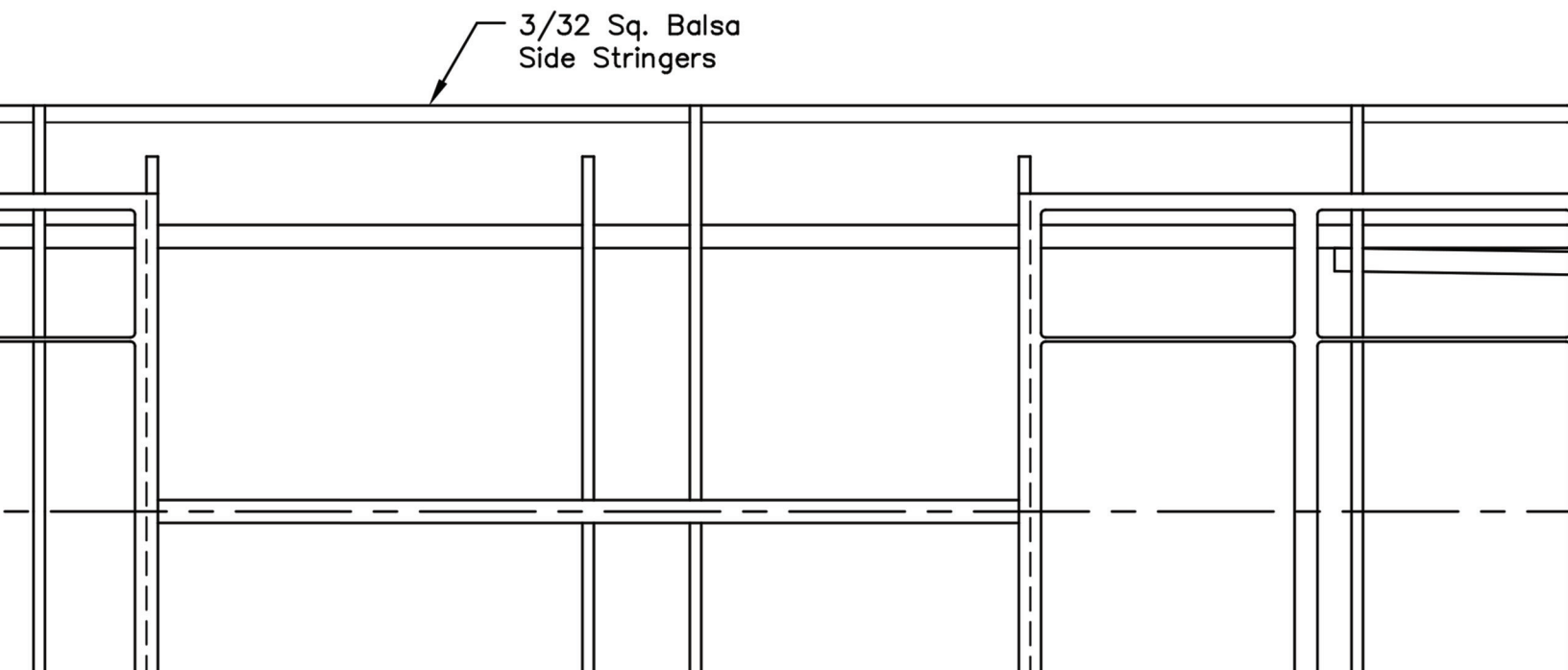
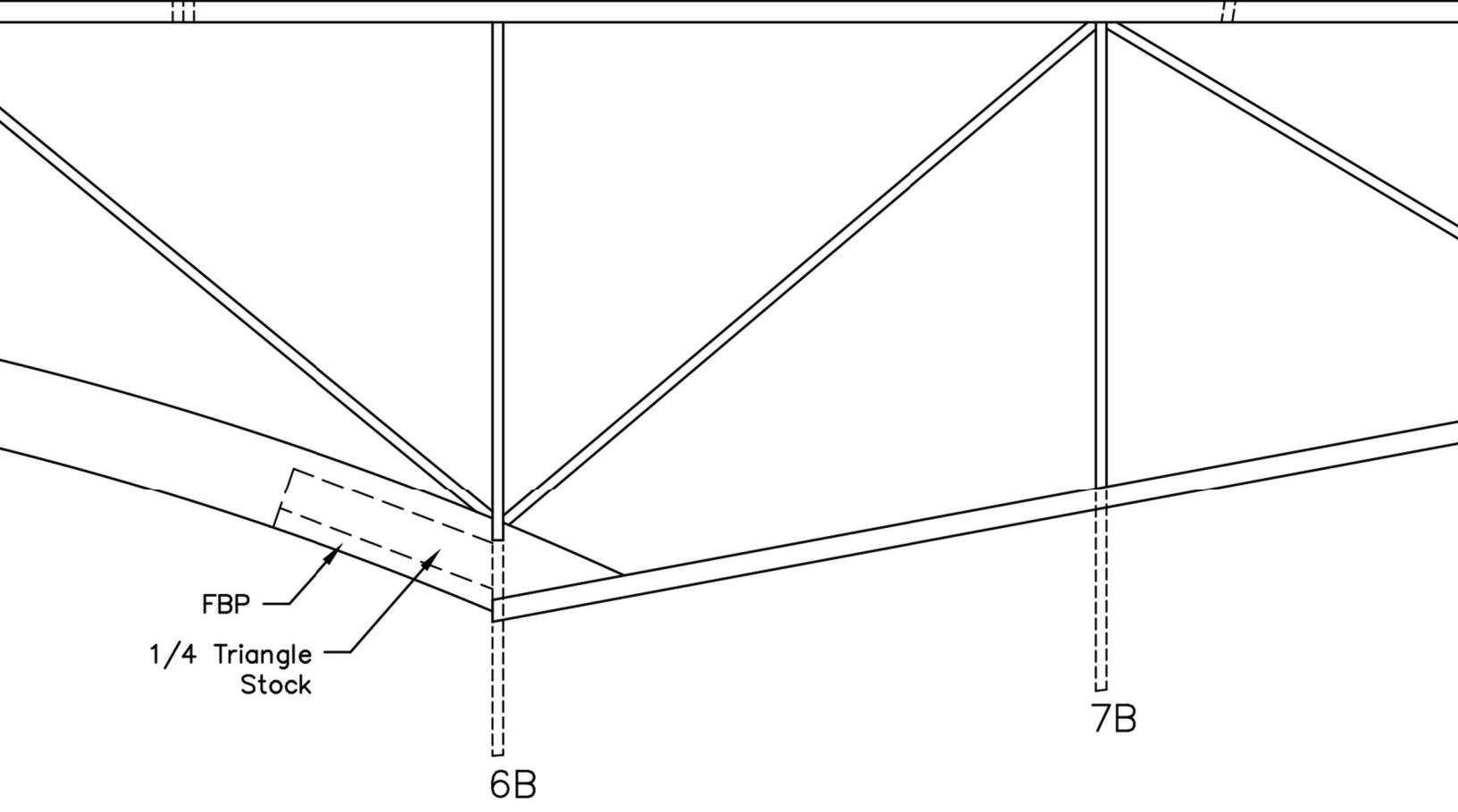


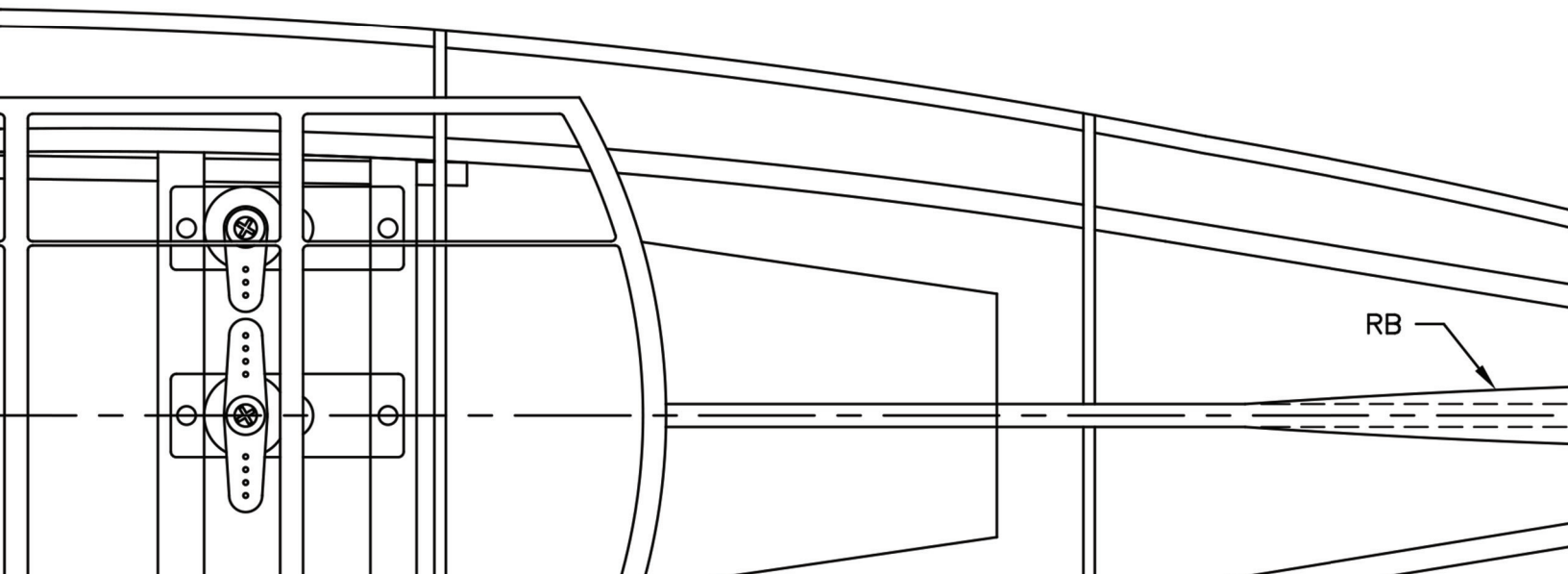
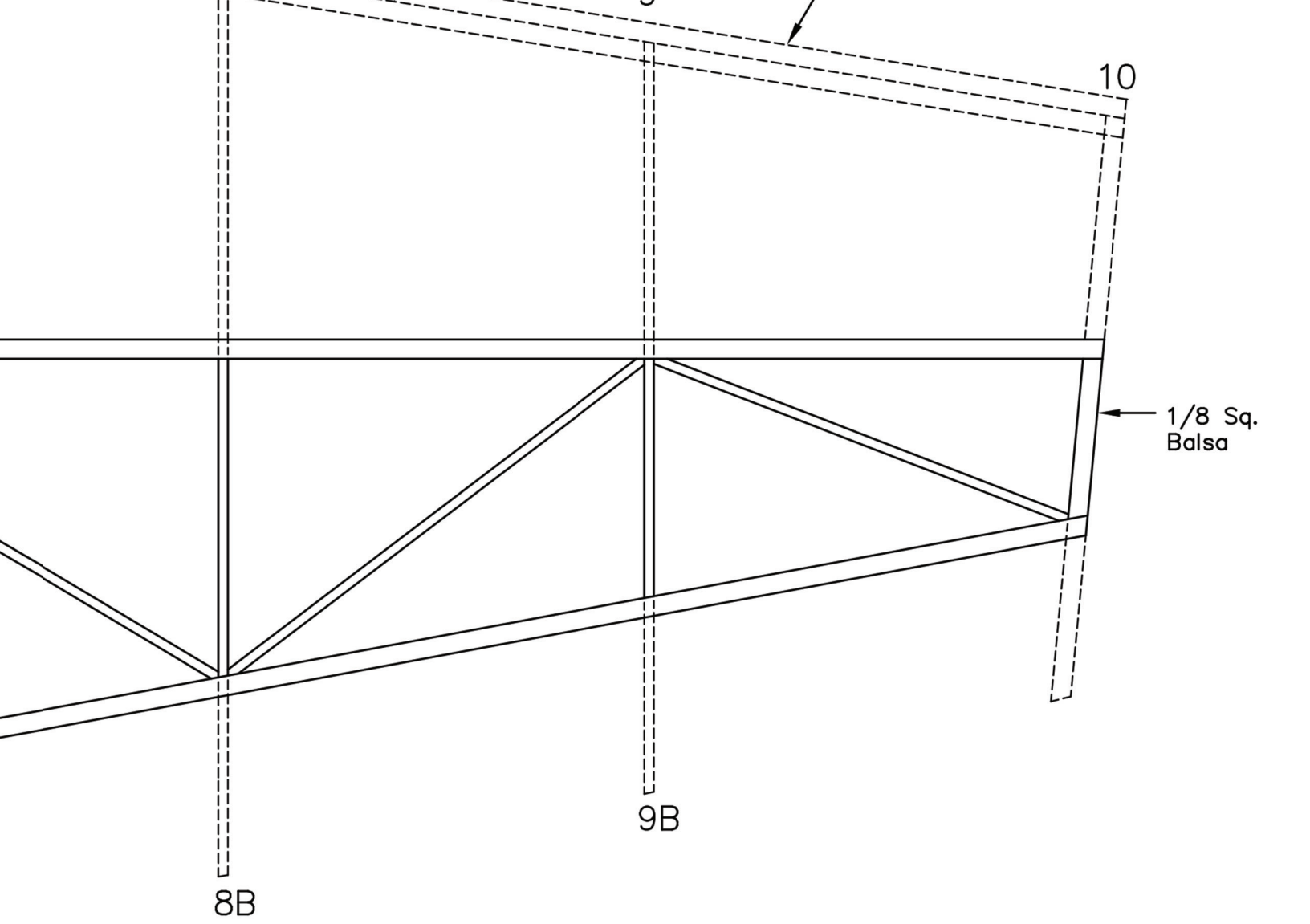


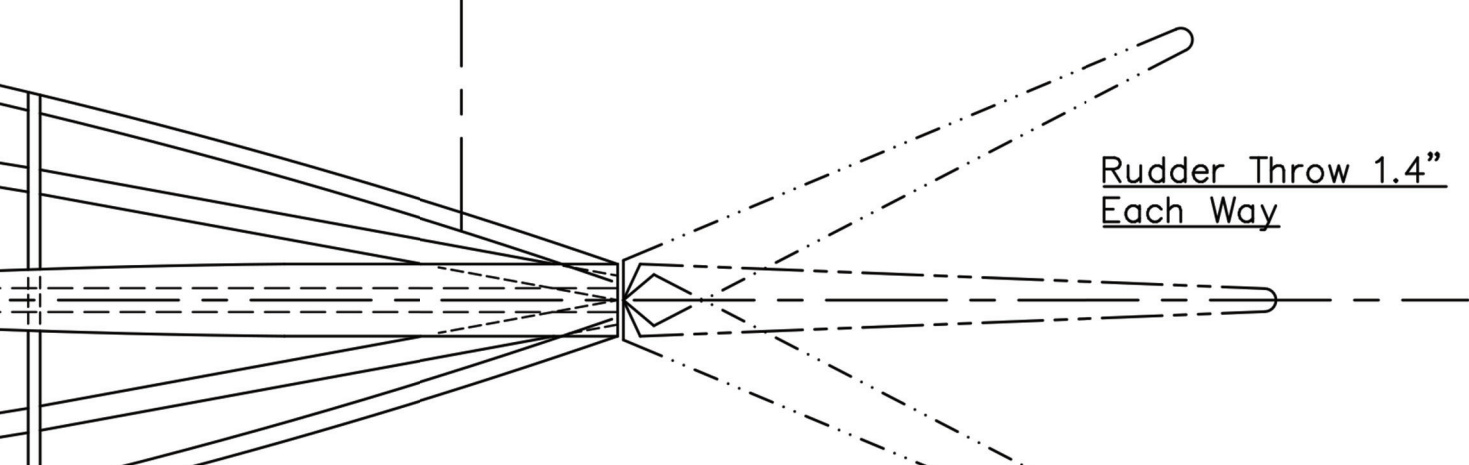
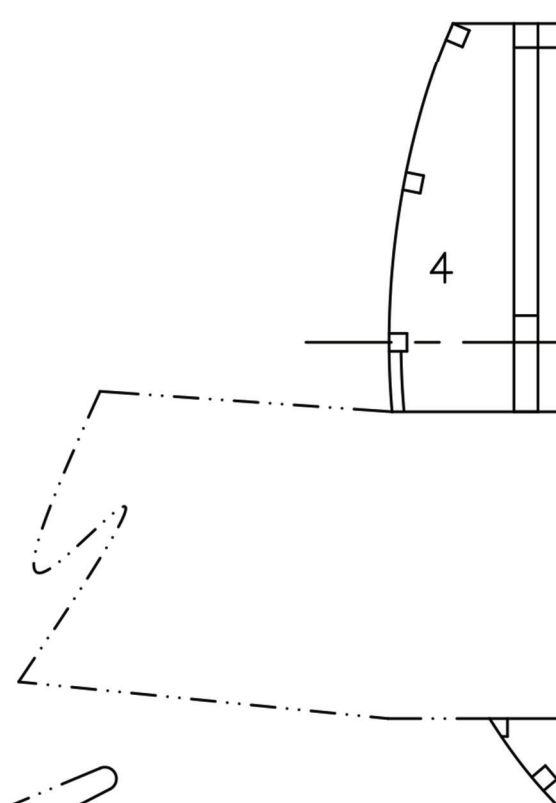
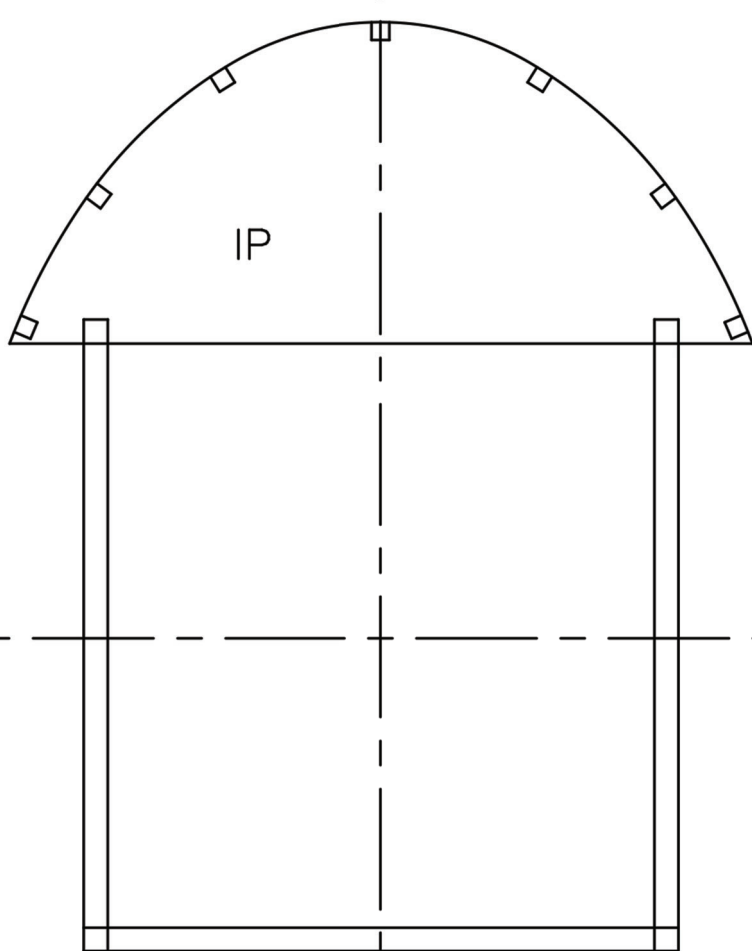
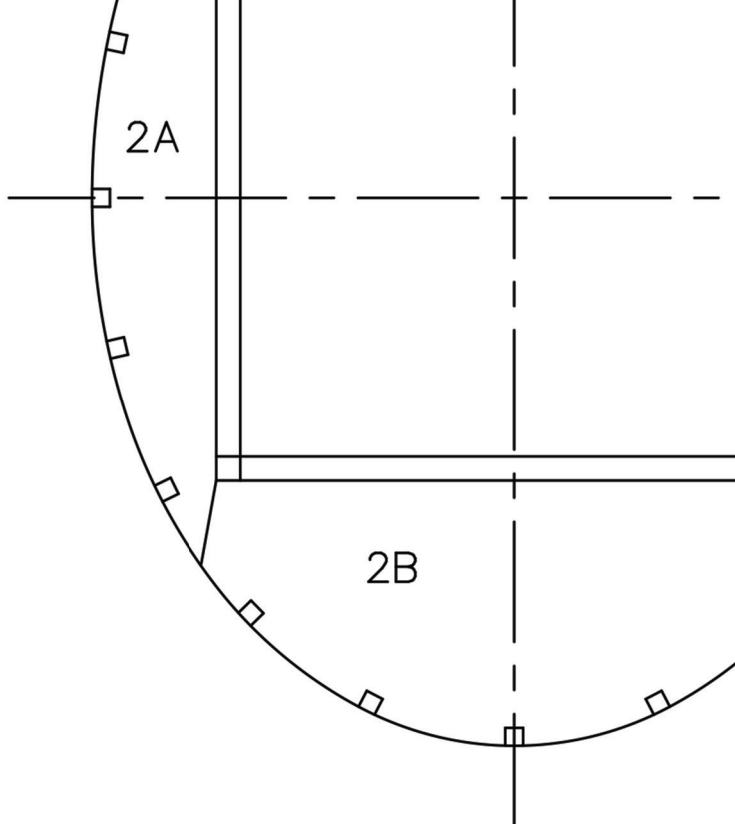


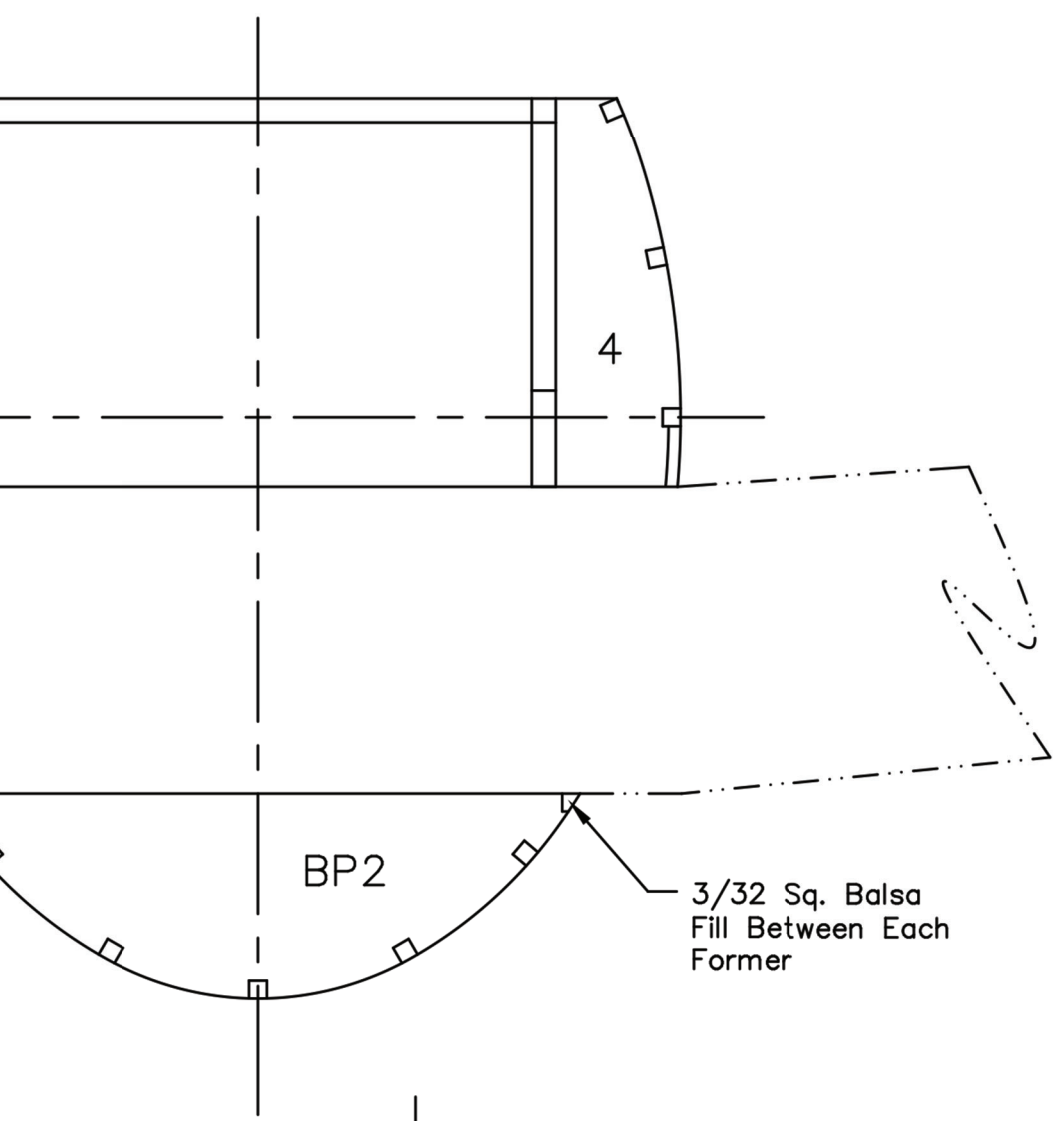
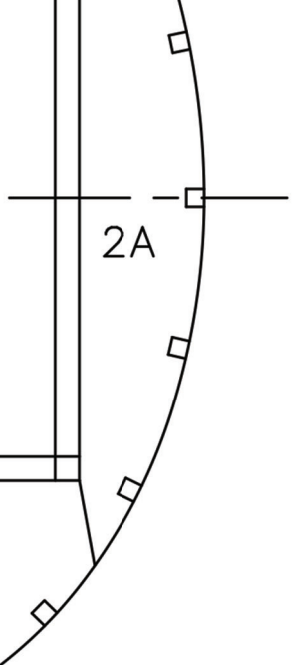


Note: The Fuselage Longerons are 1/8 Sq. Balsa. All of the Vertical, Horizontal, and Diagonal Bracing is 1/16 x 1/8 Balsa Except Where Noted.

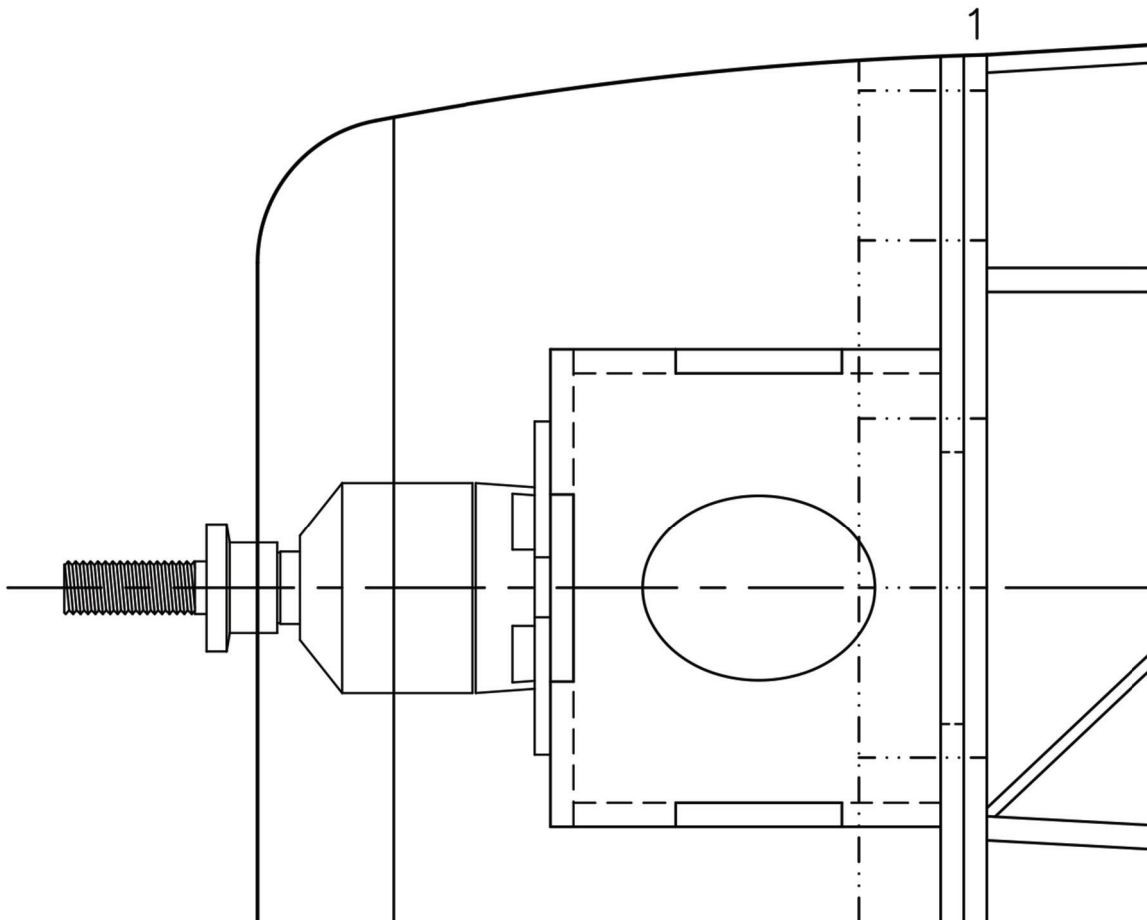
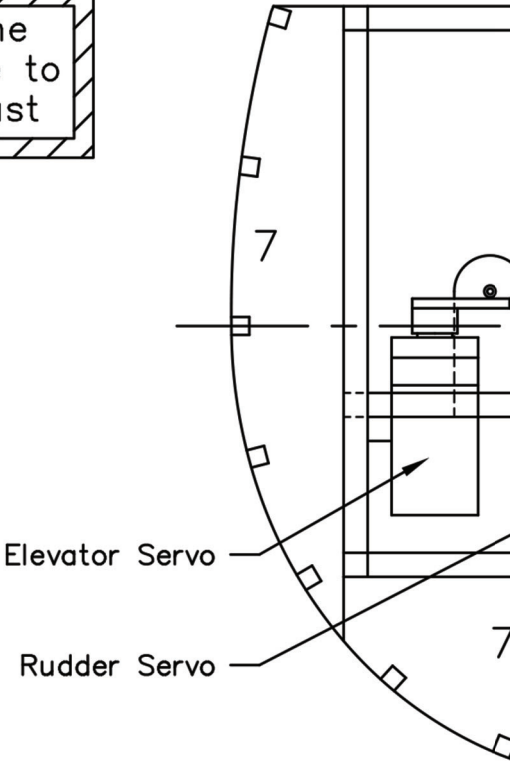


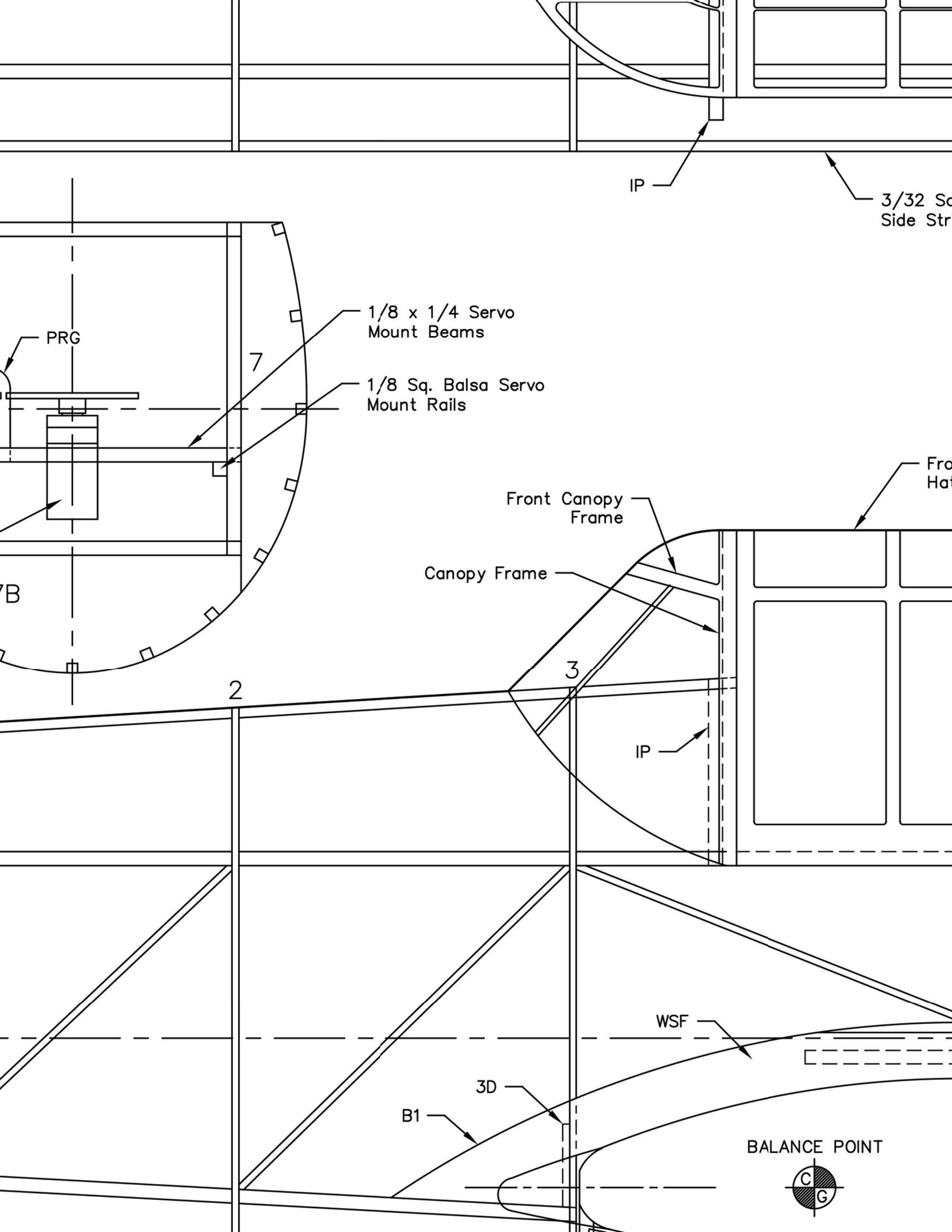


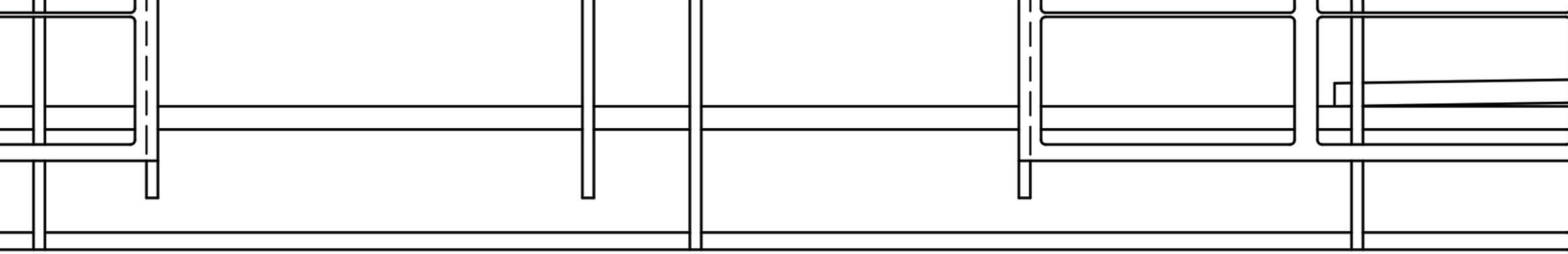




Note: Place Washers Under the Motor Mount on the Left Side to get 1.5 Degrees of Right Thrust



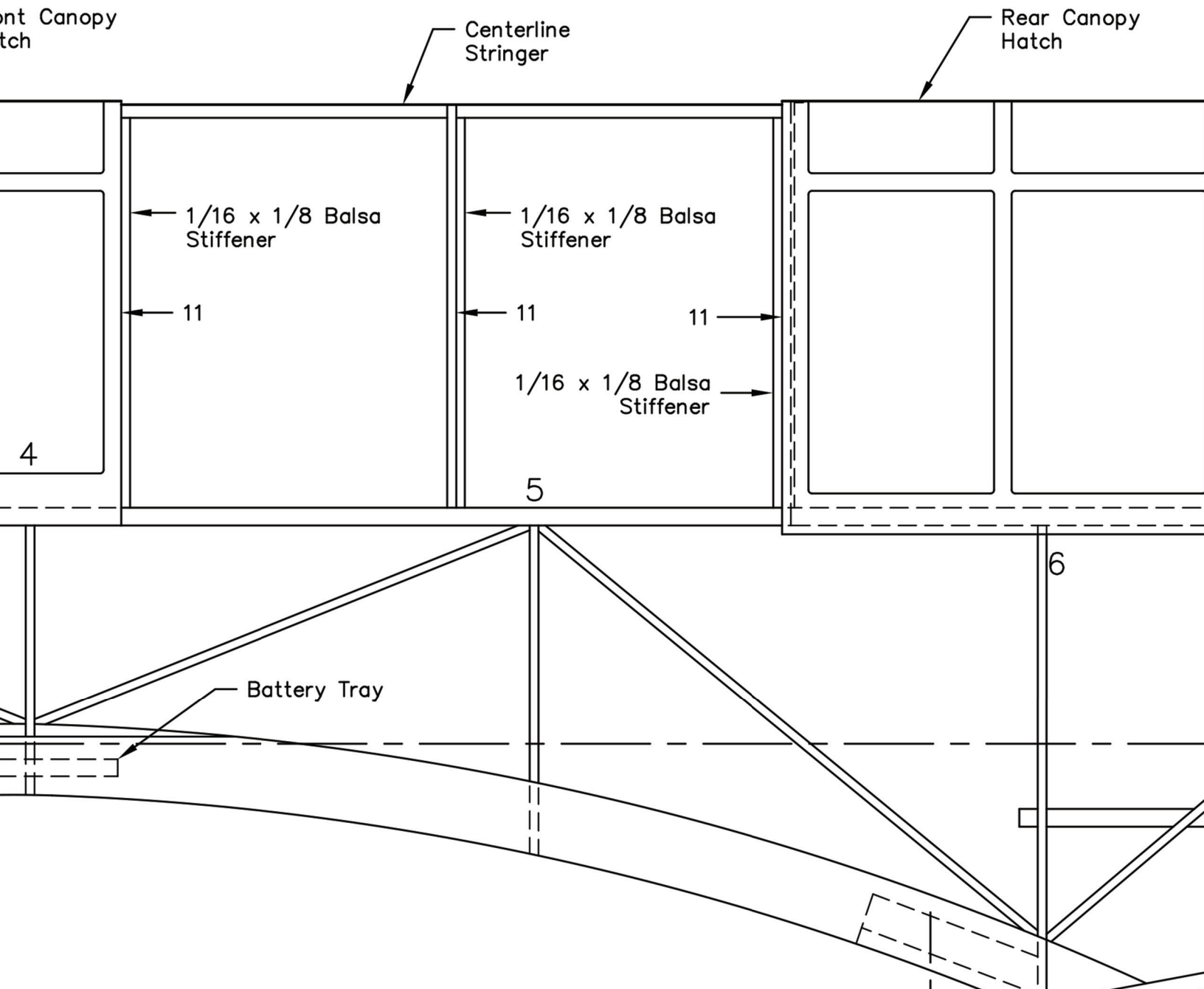


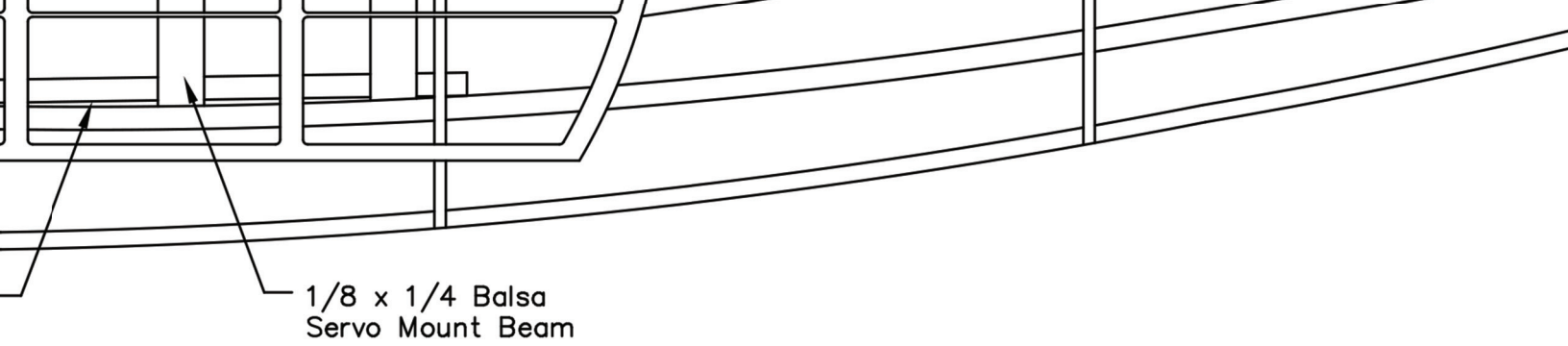


1/8 Sq. Balsa
Stringer

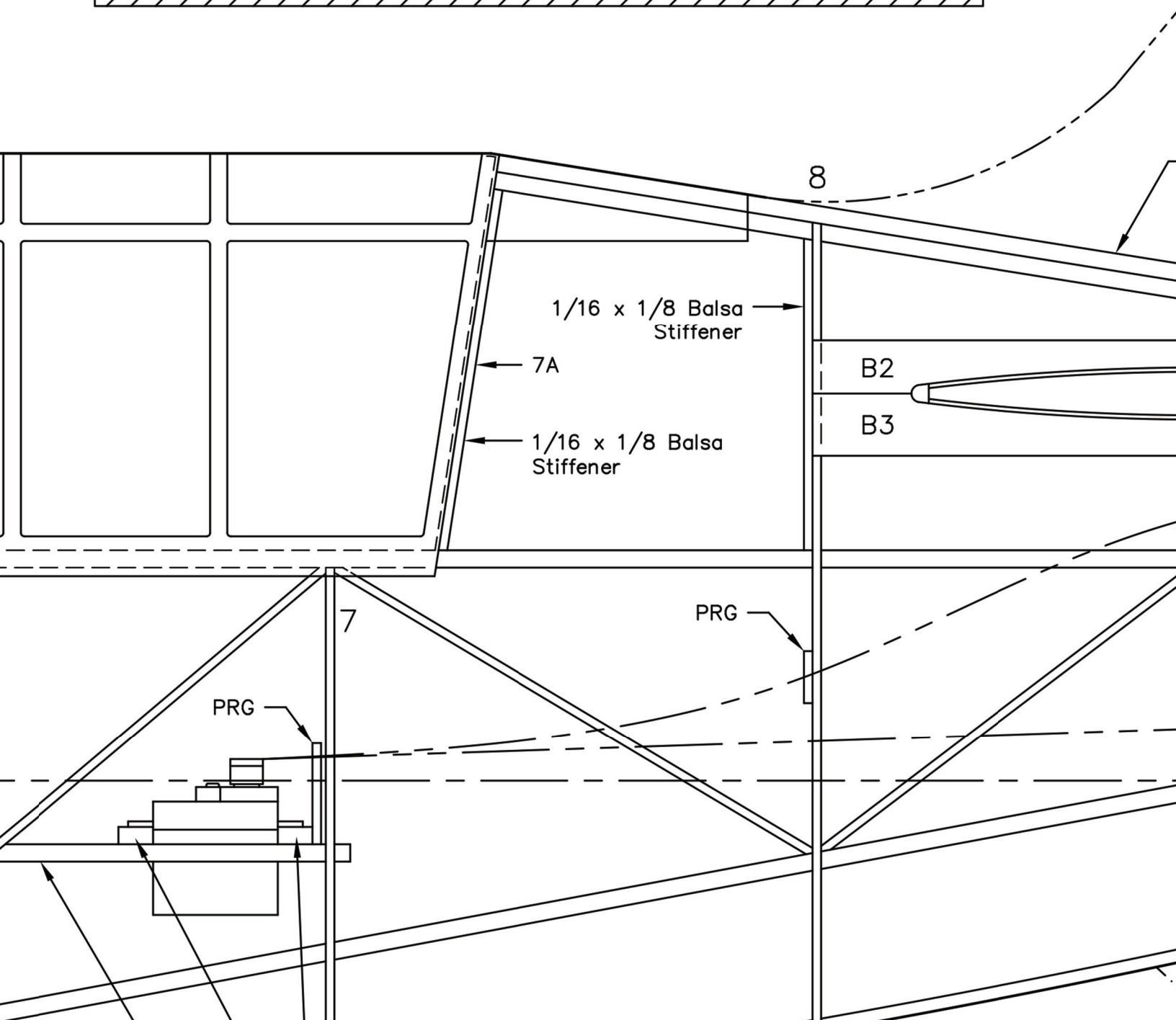
1/8 Sq. Balsa -
Servo Mount Rail

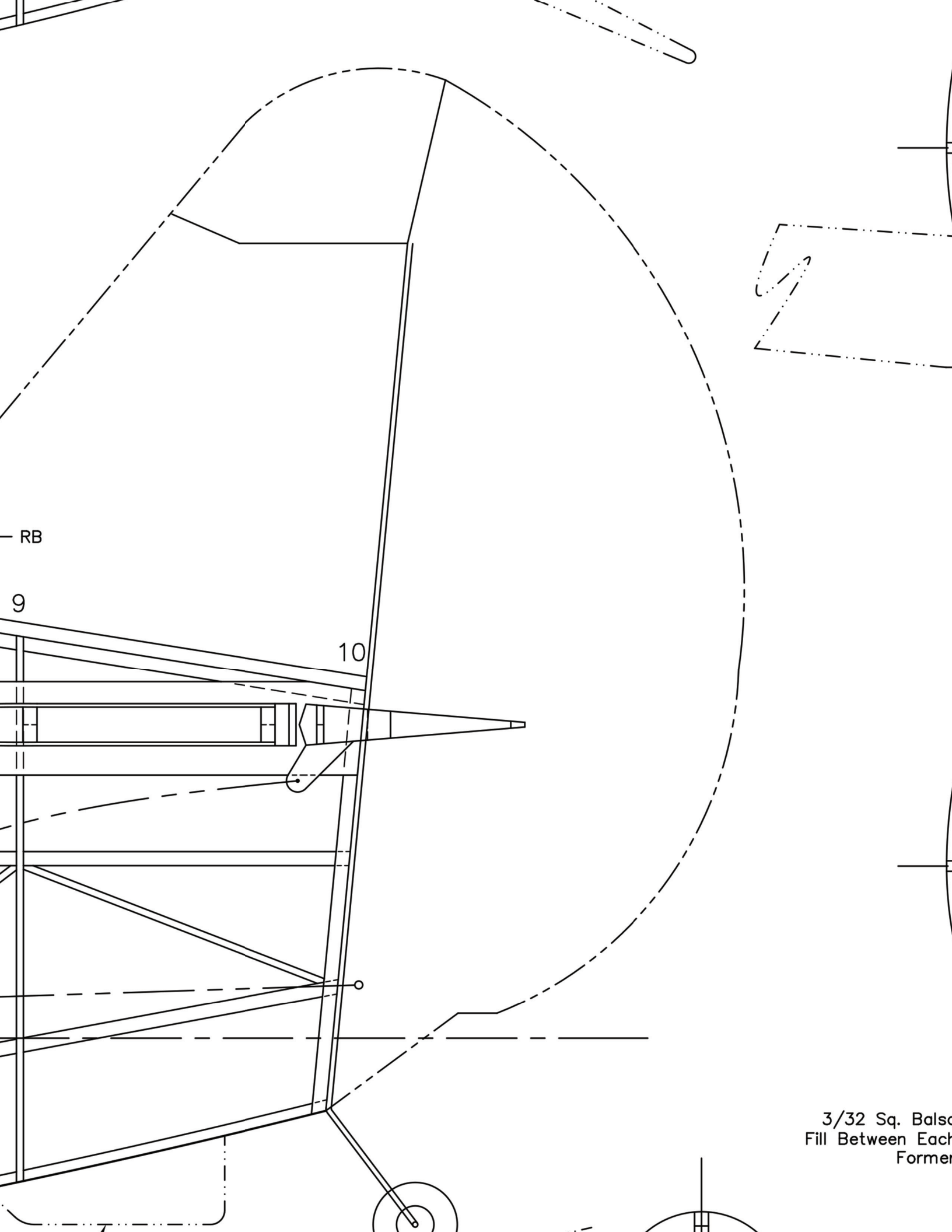
Note: The Fuselage Stringers have been Omitted from the Drawing to Reduce the Clutter. When the Stringers are Installed their Routing will Become Obvious





Note: The Rudder is Controlled Using Pull/Pull Cables
 The Elevator is Controlled by a .025 Steel Pushrod in a 1/32 I. D. Plastic Tube. Support the Tube at the Exit Point with a 1/16 Balsa Guide Between the Stringers, and at the Servo Rail and 1 Point in Between Using the Pushrod Guides (PRG).



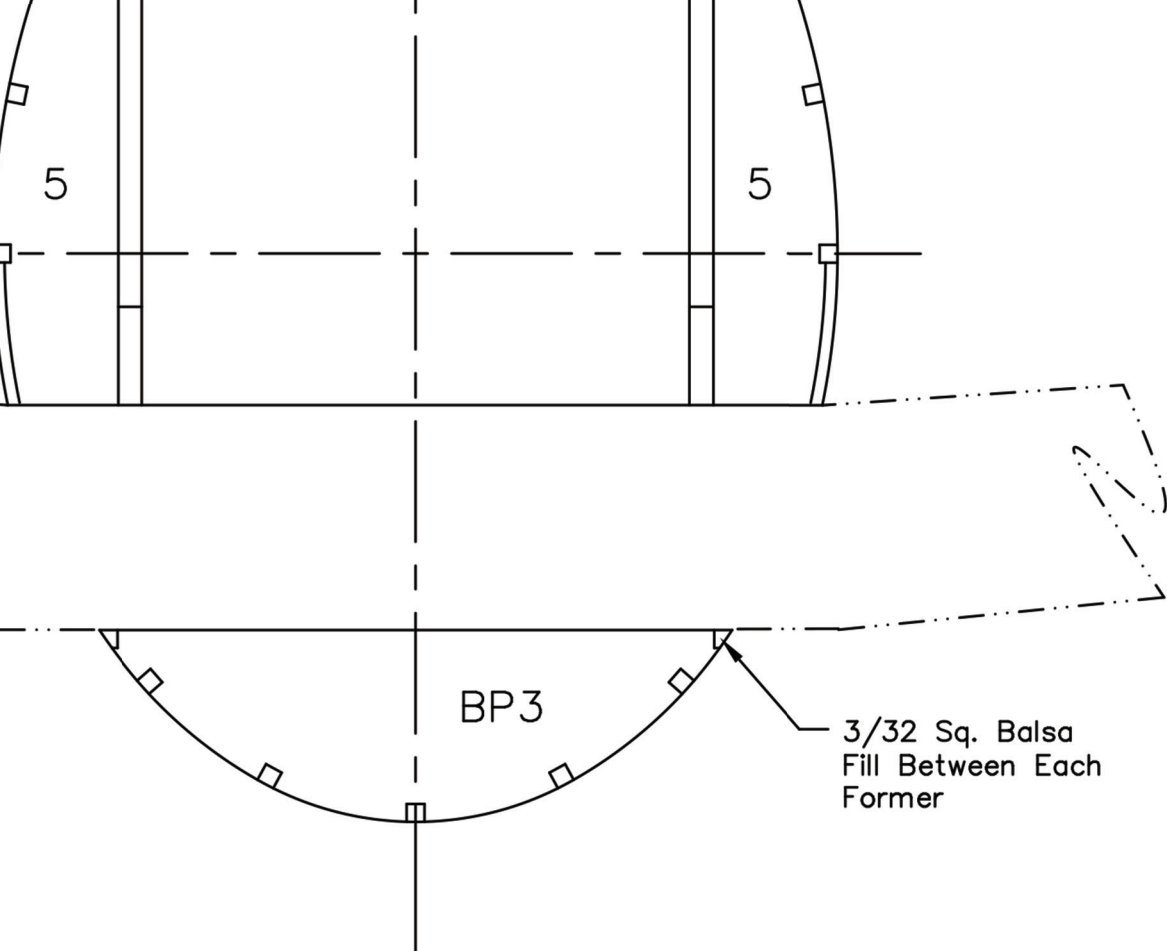


RB

9

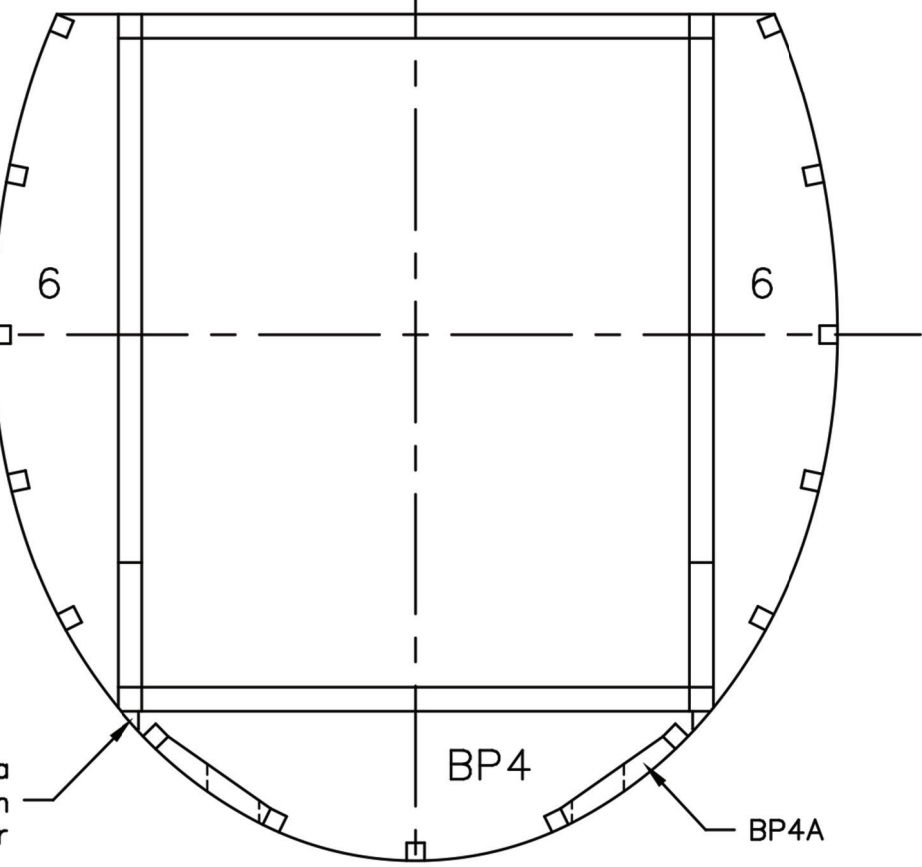
10

3/32 Sq. Balsa
Fill Between Each
Former



BP3

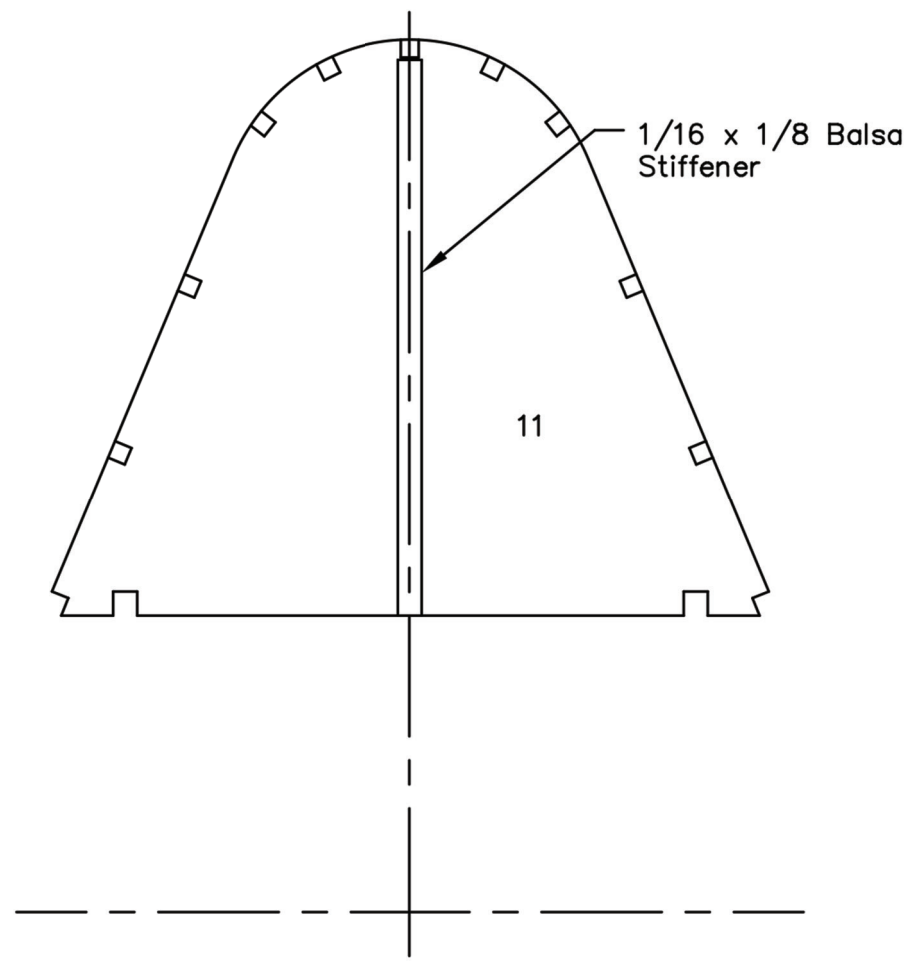
3/32 Sq. Balsa
Fill Between Each
Former

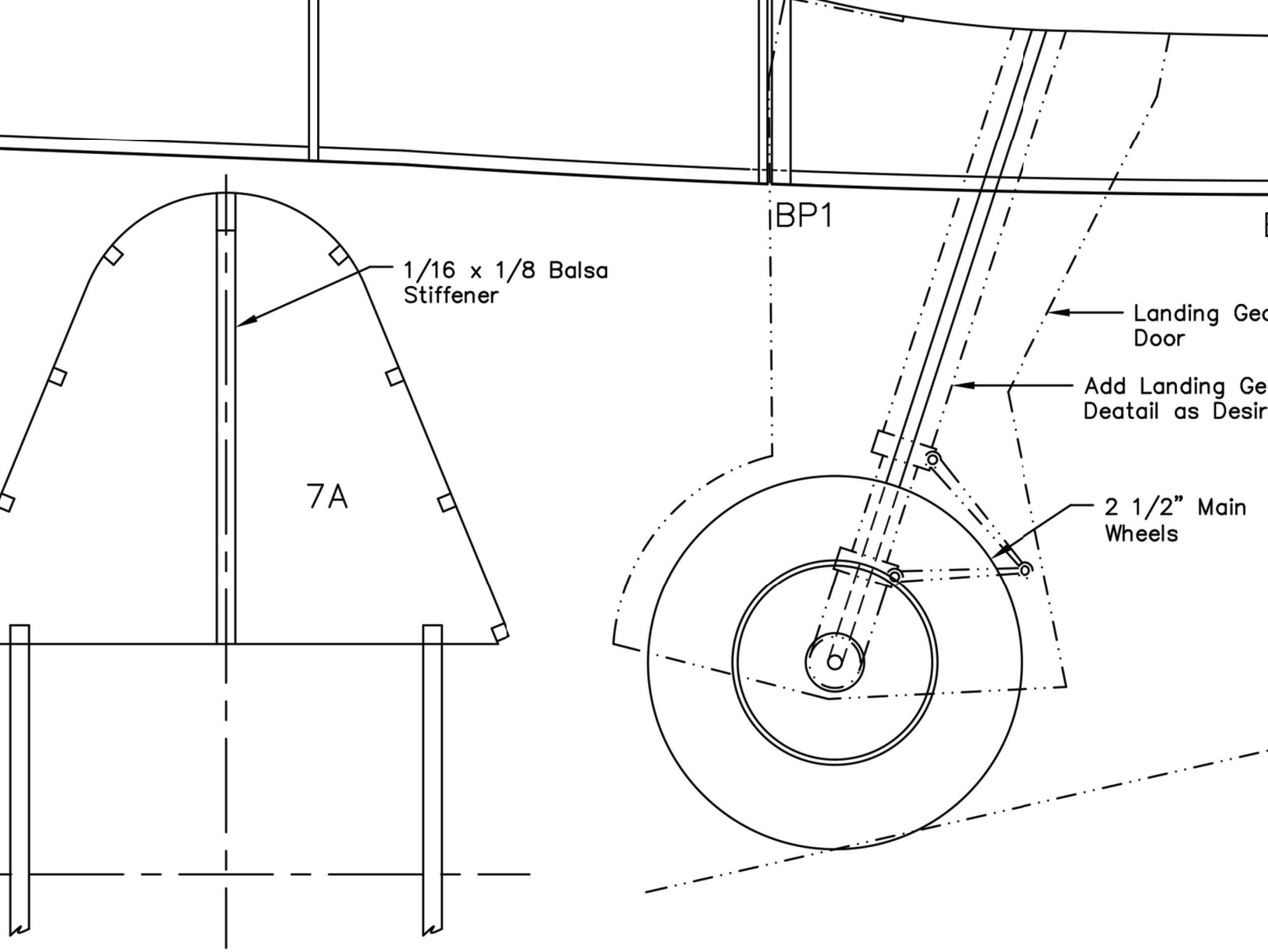


BP4

BP4A

a n r





7A

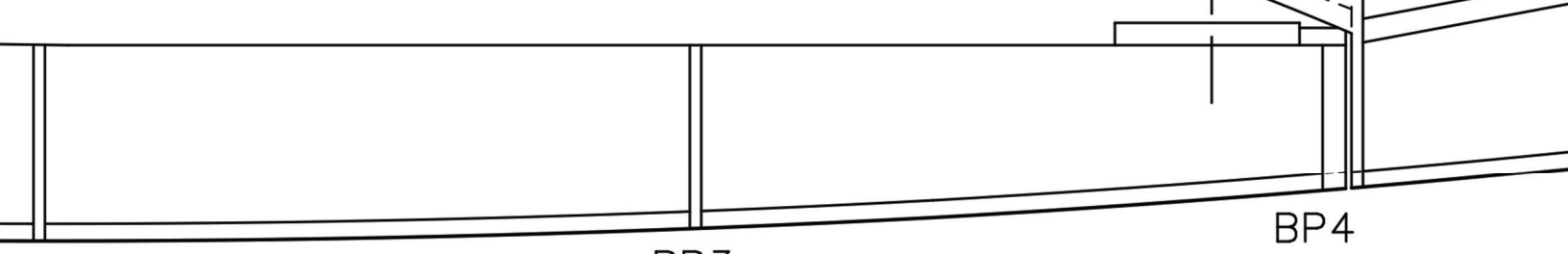
1/16 x 1/8 Balsa
Stiffener

BP1

Landing Gear
Door

Add Landing Gear
Detail as Desired

2 1/2" Main
Wheels



ar
ar
ed

Note: All Fuselage Stringers are 3/32 S
Start with the Centerline on each side o
the Stringers to Follow the Obvious Path
the Formers. Then Work up and Down U
of the Stringers are in Place.



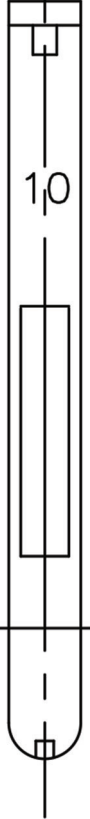
Sc
Wheel L

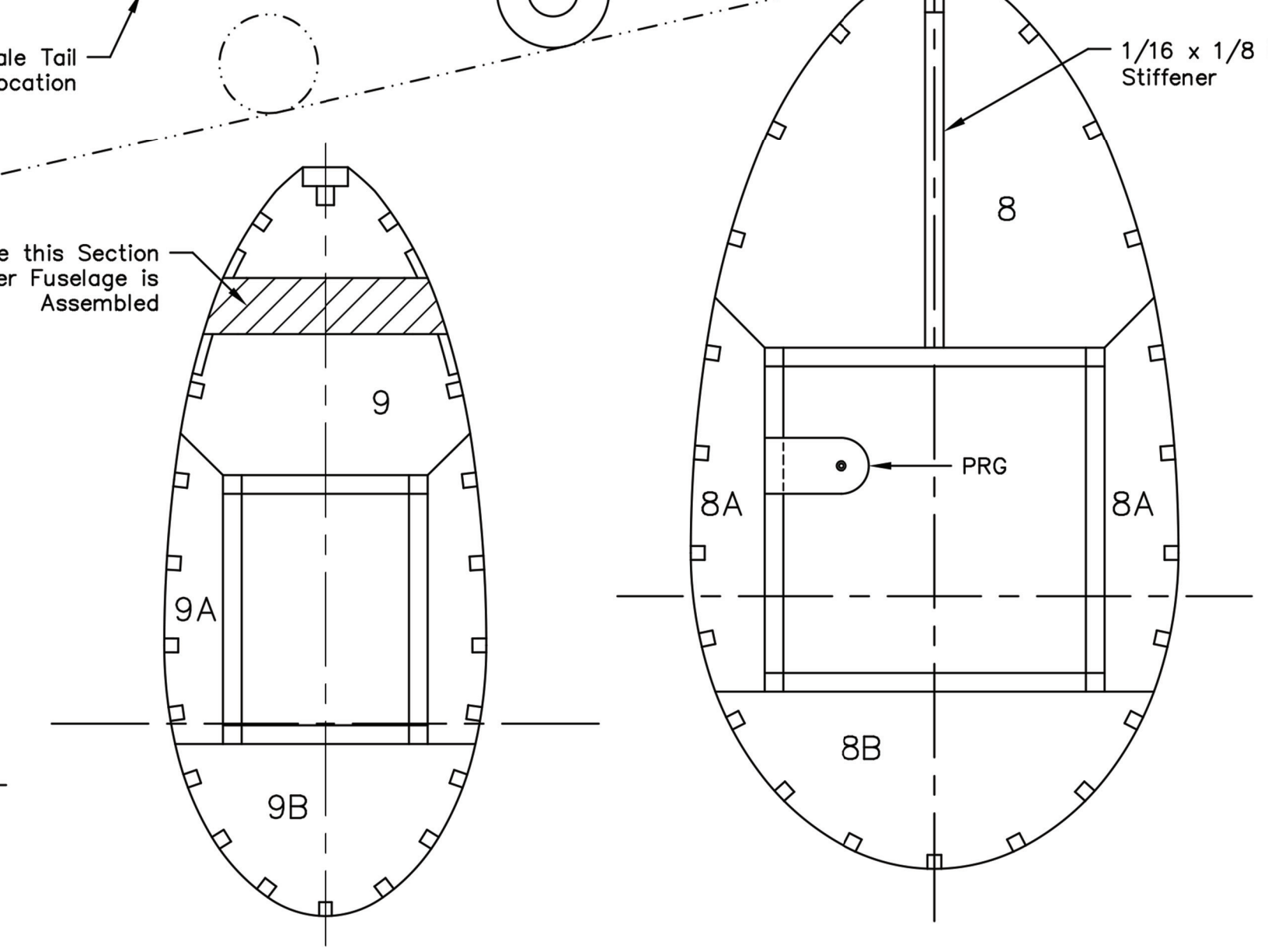
1/8 x 1/4 Balsa
Servo Mount Beam

1/8 Sq. Balsa
Servo Mount Rail

Remove
After

1/8 Sq. Balsa.
and Allow
to Dry Along
with All





Curtiss SB2C Helldiver

Span: 48" Length: 37.7"

Wing Area: 396 Sq. In. Wt: 24.3 oz.

Designed by: Pat Tritle for
Model Aviation Magazine

Sheet 1 of 3

11-17-2018