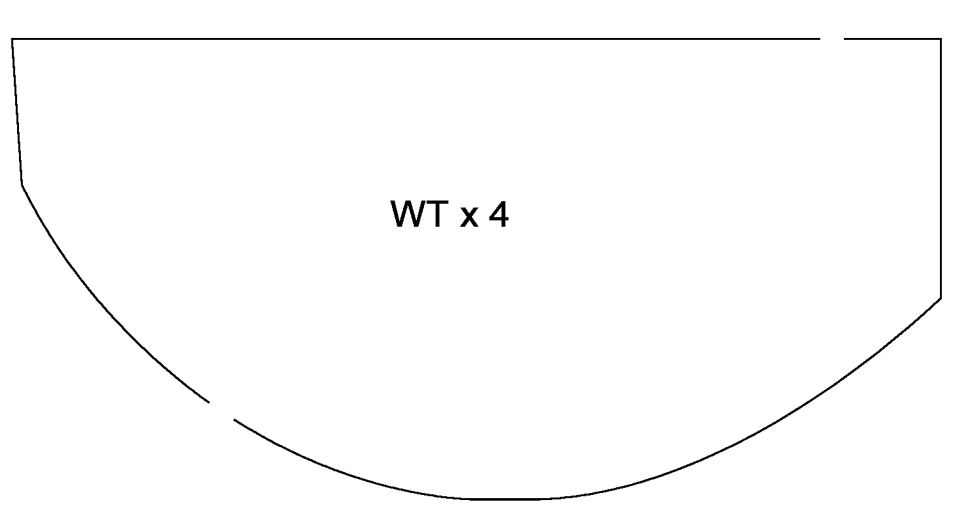
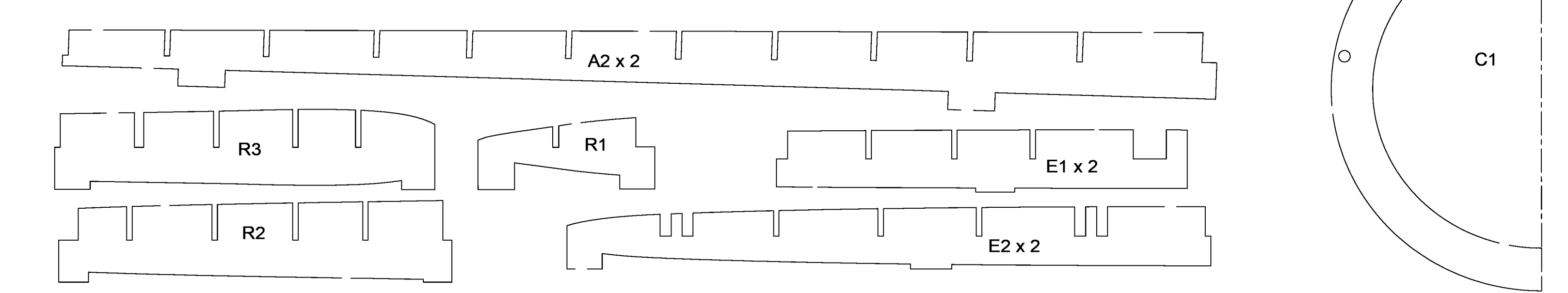


NOTE ON ALL PARTS WITH CENTERLINES: ONE SIDE SHOWN FOR ECONOMY OF SPACE
MAKE A LEFT AND RIGHT SIDE FOR EACH OF THESE PARTS

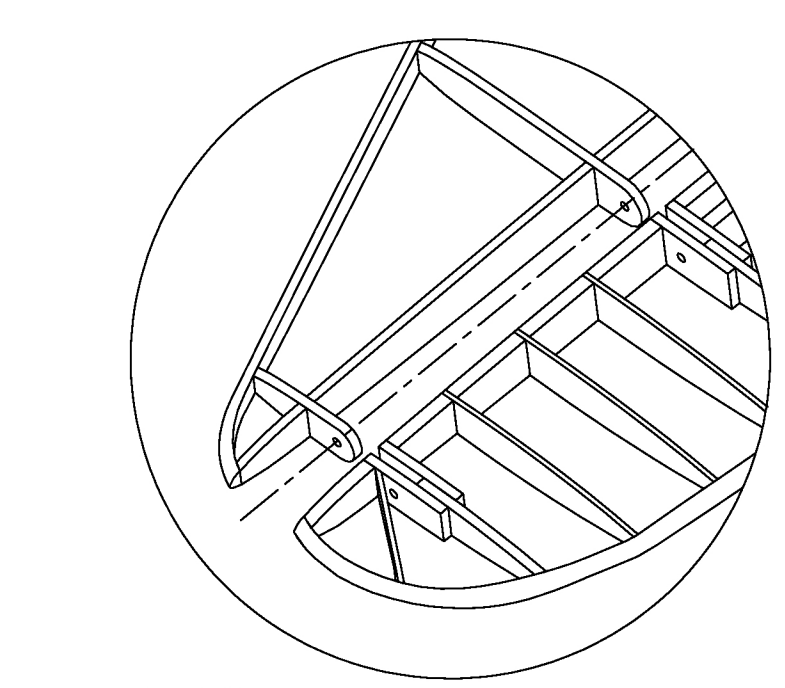
PARTS OUTLINES: THIS KIT WAS DESIGNED FOR LASER CUTTING FROM THE START. BUT FOR THOSE OF YOU WILLING TO CUT BY HAND, HERE ARE THE OUTLINES FOR ALL OF THE PARTS FROM THE SHORT KIT. PLEASE DISREGARD THE TABS IN THE OUTLINES THAT ARE USED BY THE LASER CUTTER.



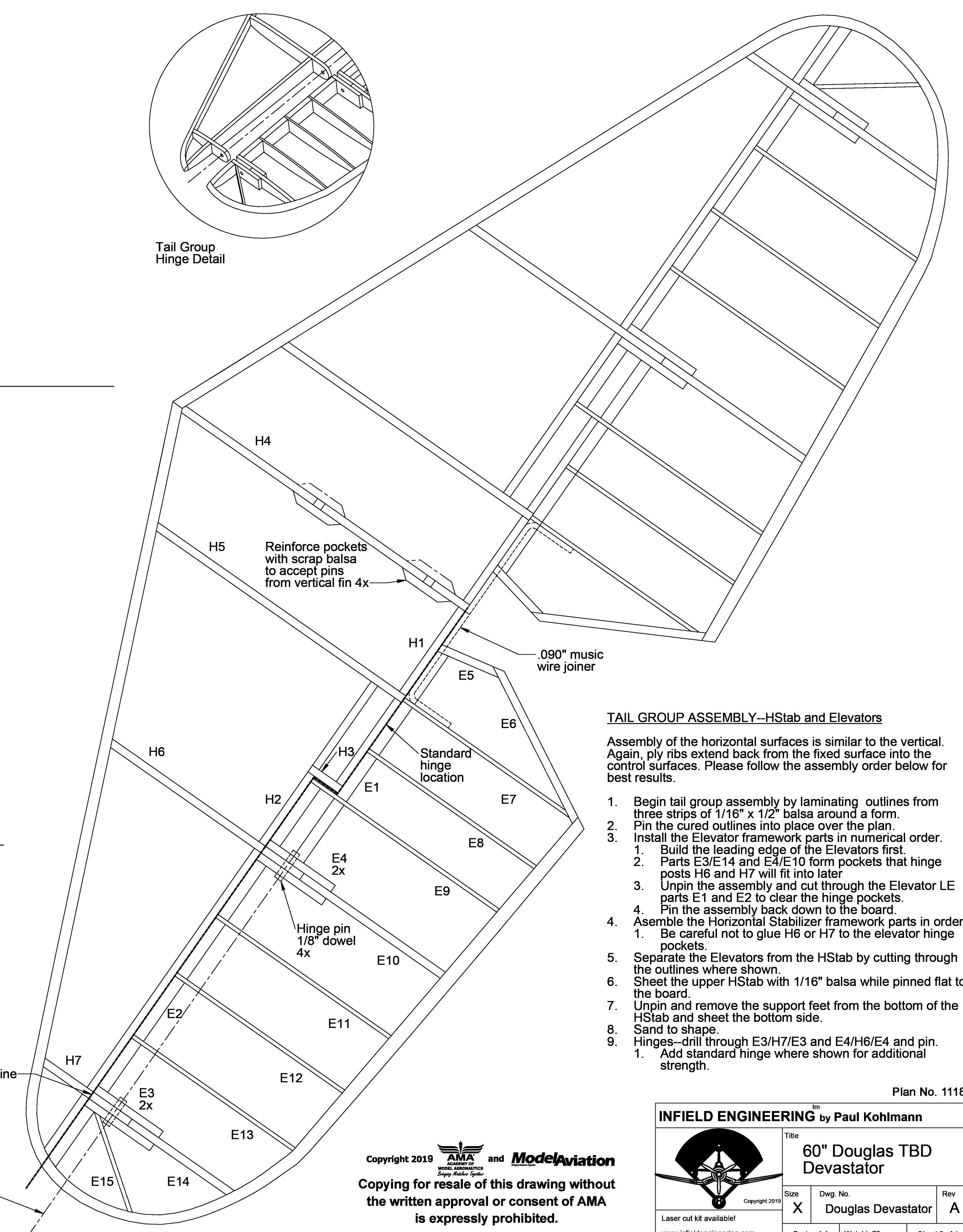
1/4" Balsa--MAKE 1 OF EACH UNLESS OTHERWISE NOTED



3/16" Balsa--MAKE 1 OF EACH UNLESS OTHERWISE NOTED



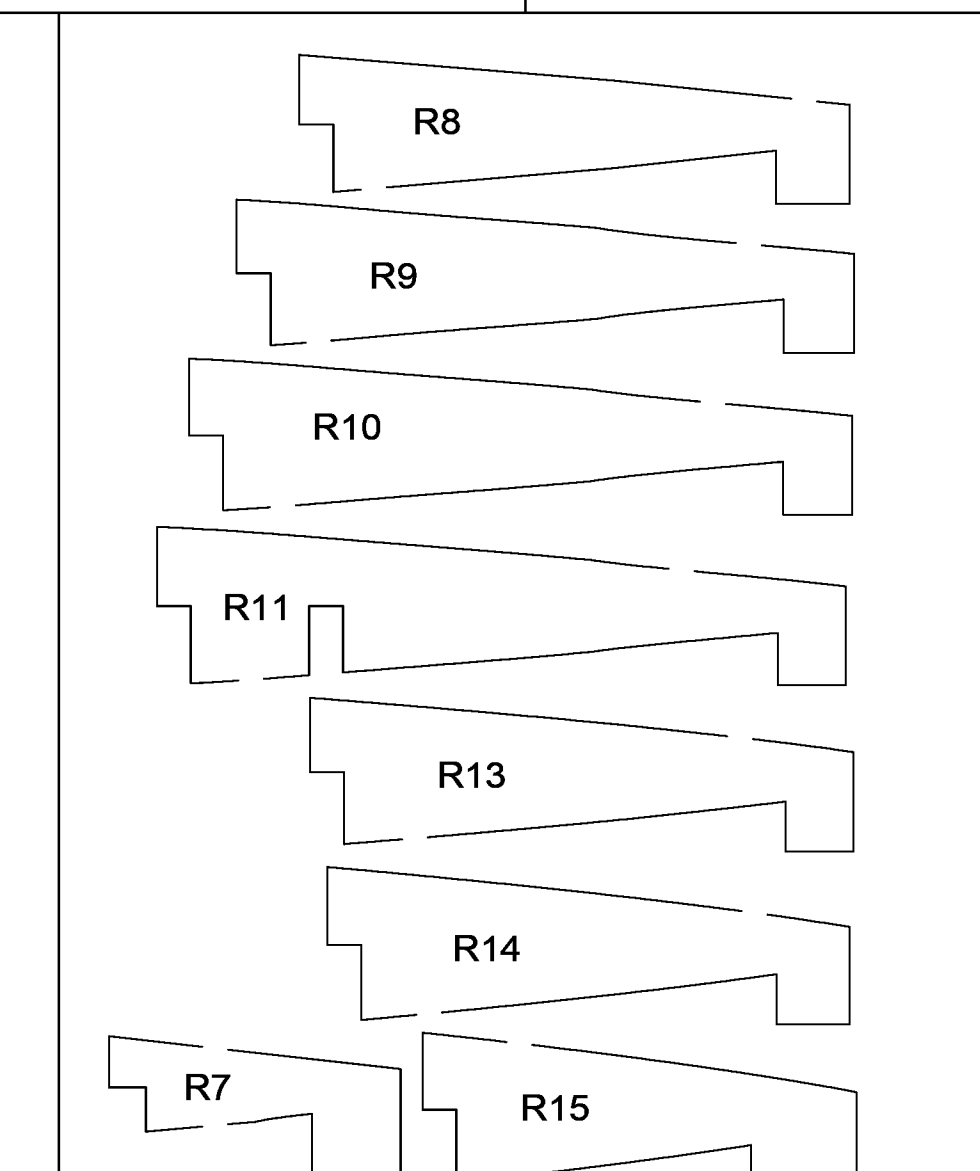
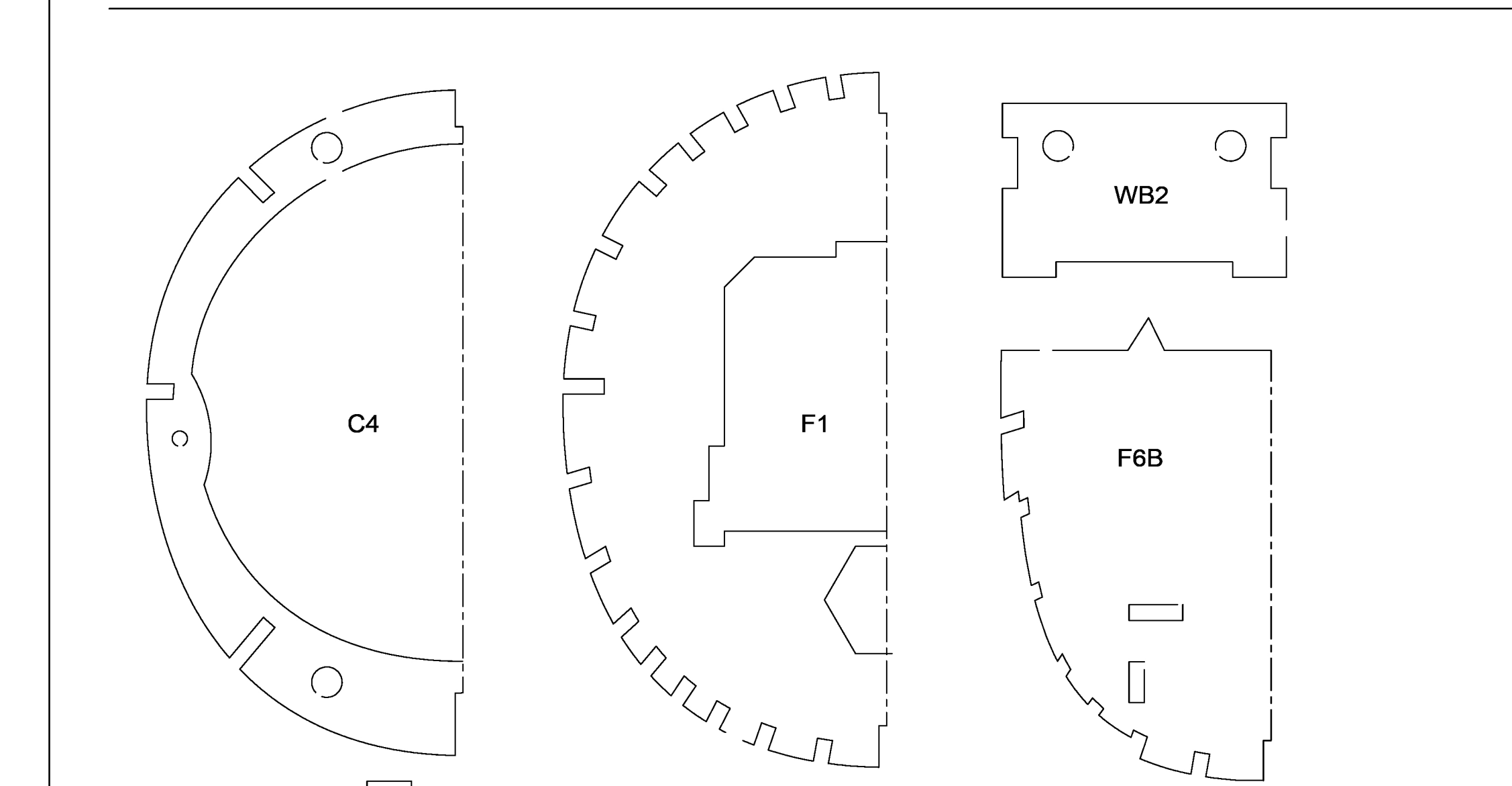
Tail Group Hinge Detail



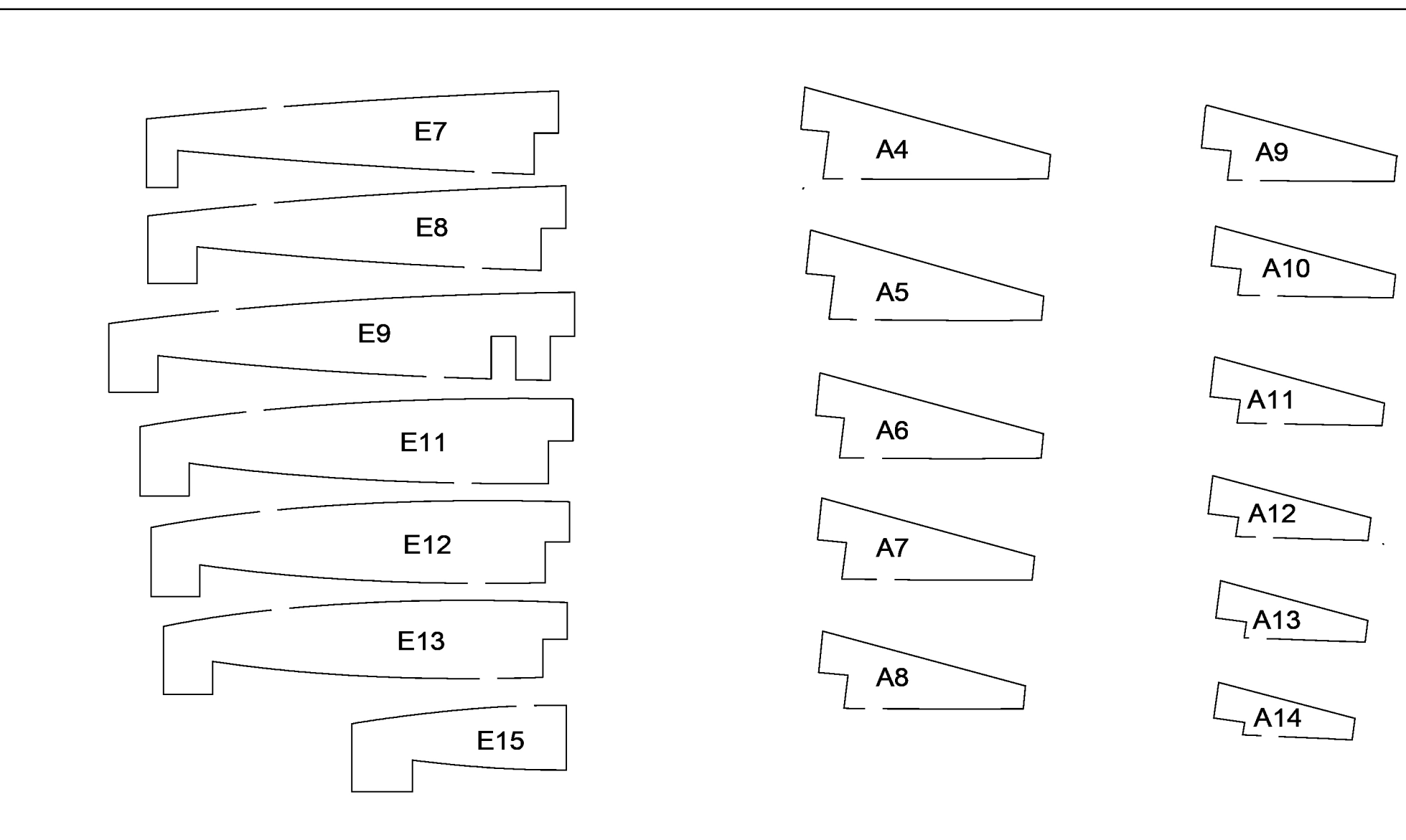
TAIL GROUP ASSEMBLY--HStab and Elevators

Assembly of the horizontal surfaces is similar to the vertical. Again, ply ribs extend back from the fixed surface into the control surfaces. Please follow the assembly order below for best results.

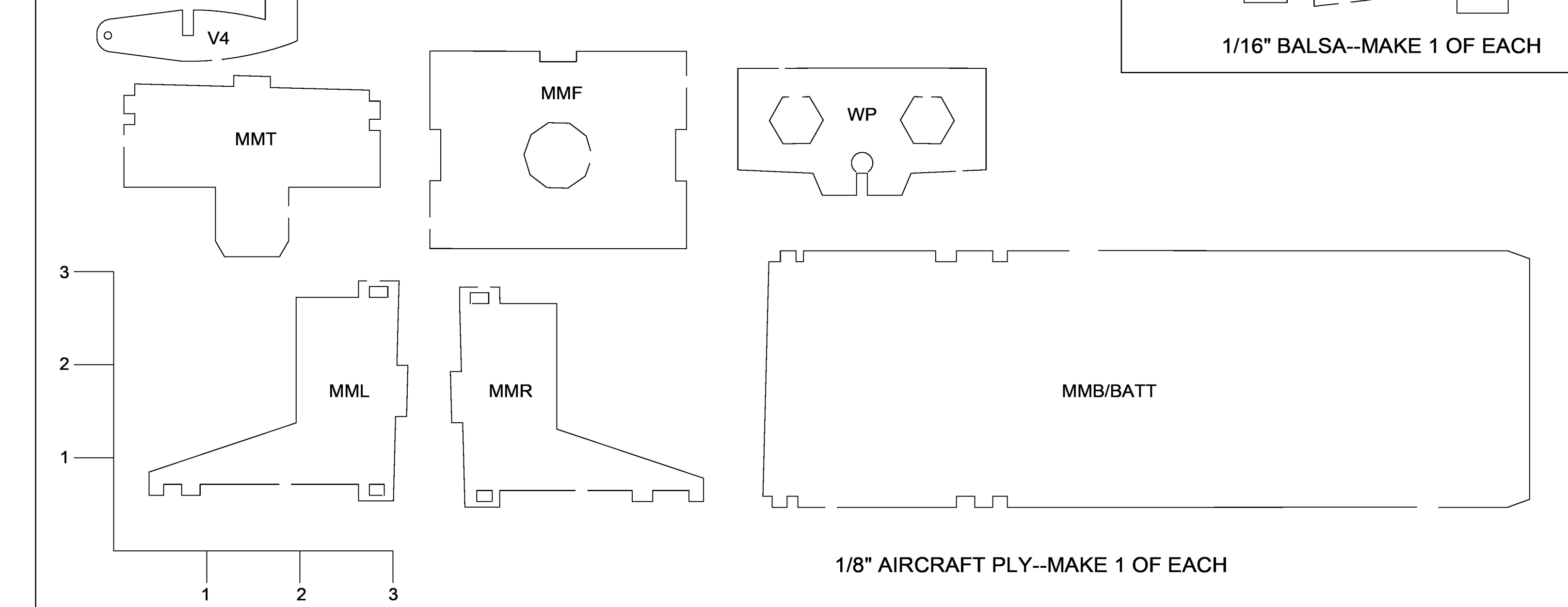
1. Begin tail group assembly by laminating outlines from three strips of 1/16" x 1/2" balsa around a form.
2. Pin the cured outlines into place over the plan.
3. Install the Elevator framework parts in numerical order.
 1. Build the leading edge of the Elevators first.
 2. Parts E3/E14 and E4/E10 form pockets that hinge posts H6 and H7 will fit into later.
 3. Unpin the assembly and cut through the Elevator LE parts E1 and E2 to clear the hinge pockets.
 4. Pin the assembly back down to the board.
4. Assemble the Horizontal Stabilizer framework parts in order.
 1. Be careful not to glue H6 or H7 to the elevator hinge pockets.
5. Separate the Elevators from the HStab by cutting through the outlines where shown.
6. Sheet the upper HStab with 1/16" balsa while pinned flat to the board.
7. Unpin and remove the support feet from the bottom of the HStab and sheet the bottom side.
8. Sand to shape.
9. Hinges--drill through E3/H7/E3 and E4/H6/E4 and pin.
 1. Add standard hinge where shown for additional strength.



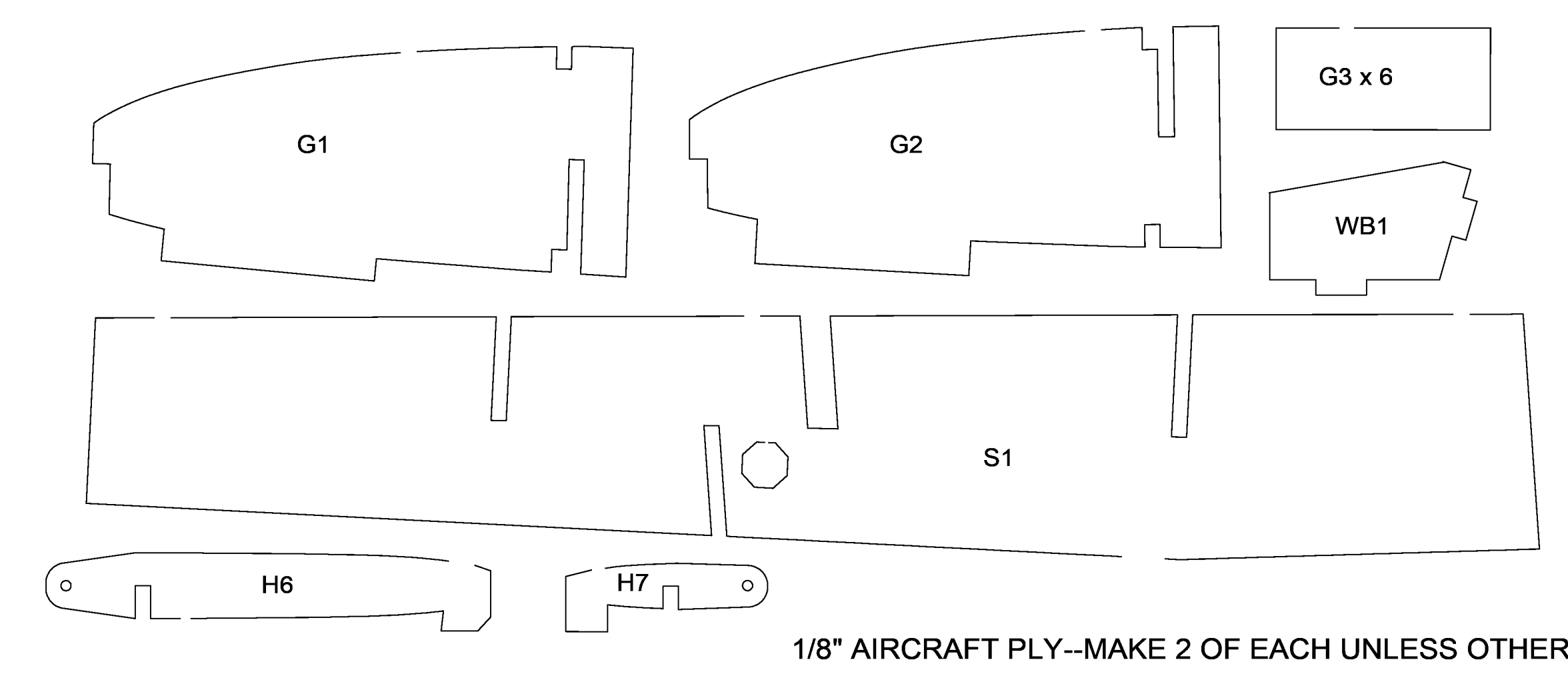
1/16" Balsa--MAKE 1 OF EACH



1/16" Balsa--MAKE 2 OF EACH



1/8" AIRCRAFT PLY--MAKE 1 OF EACH



1/8" AIRCRAFT PLY--MAKE 2 OF EACH UNLESS OTHERWISE NOTED

Copyright 2019 AMA and ModelAviation
Copying for resale of this drawing without the written approval or consent of AMA is expressly prohibited.

Plan No. 1118

INFIELD ENGINEERING by Paul Kohlmann

Copyright 2019

60" Douglas TBD Devastator

Size X Dwg. No. Douglas Devastator Rev A

Scale: 1:1 Weight: 75oz Sheet 3 of 4