

1

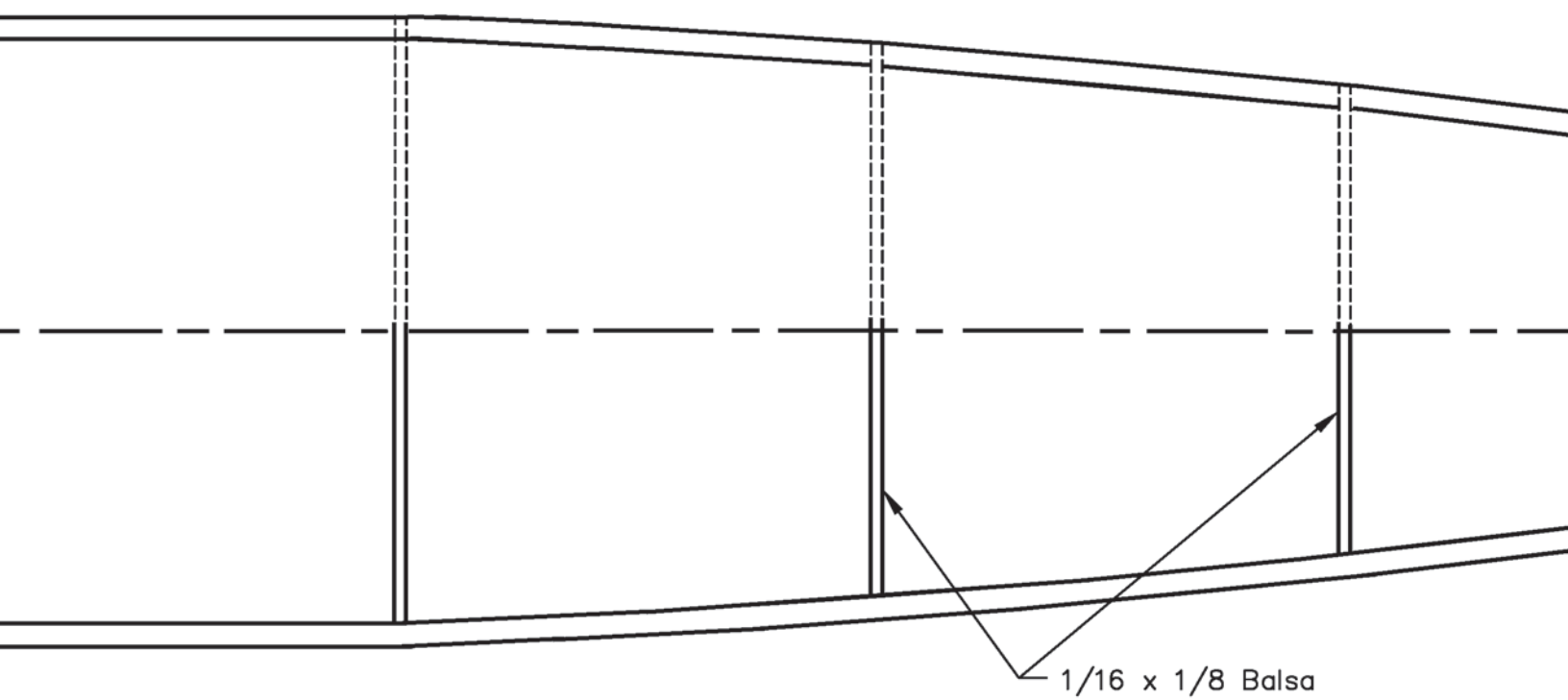
1

CM1/CM2

1

CM1/CM2

1



1/16 x 1/8 Balsa

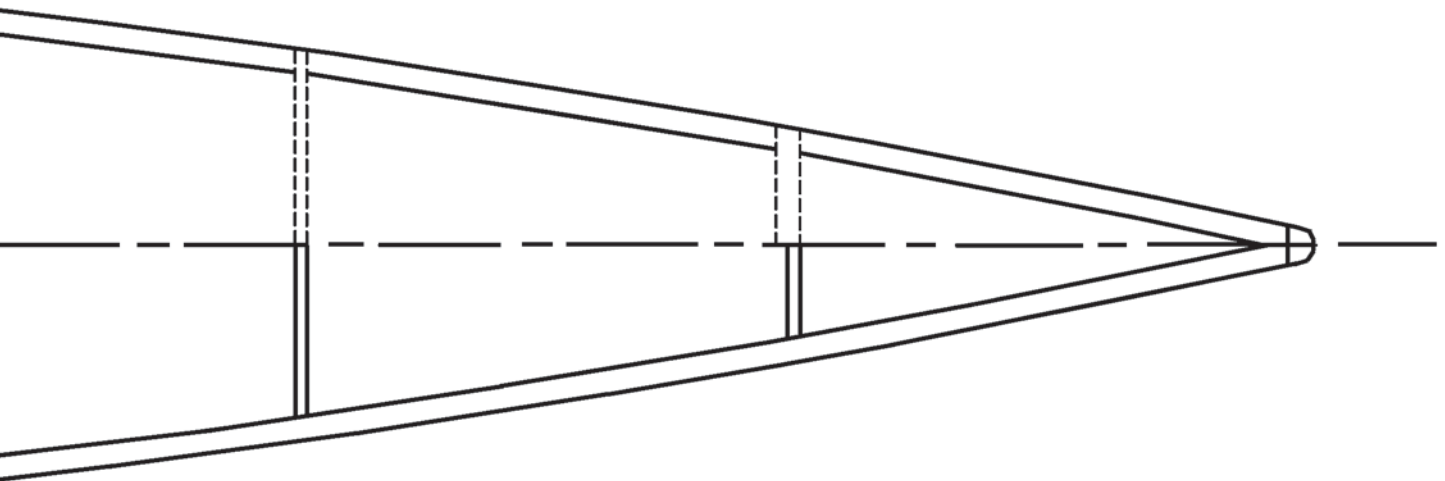
2

3

4

1/8" Sp. Balsa

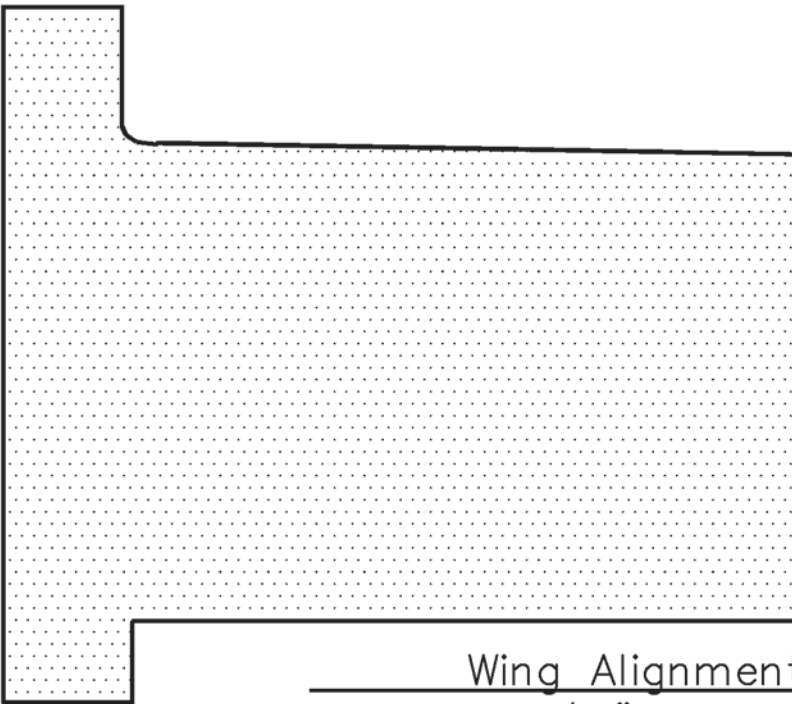
1/16"



1/16 x 1/8

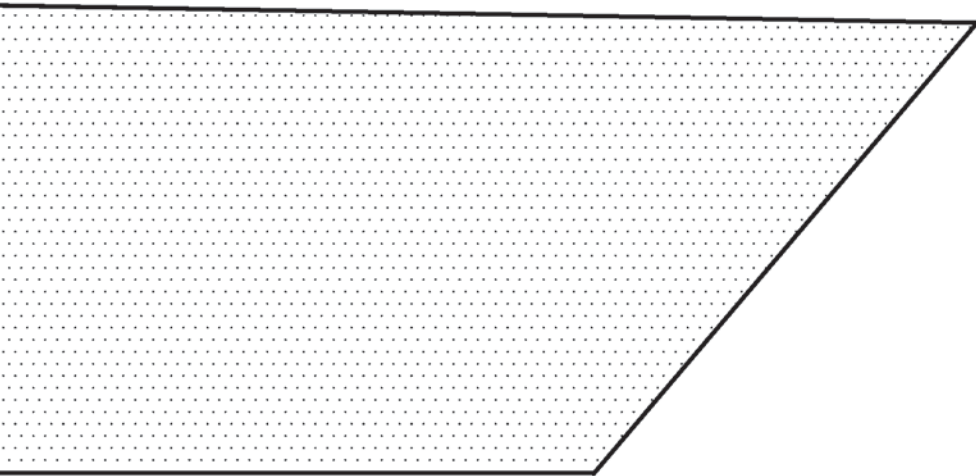
5

PRG - Right Hand Side

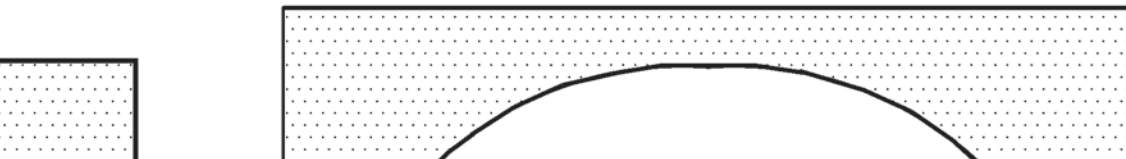


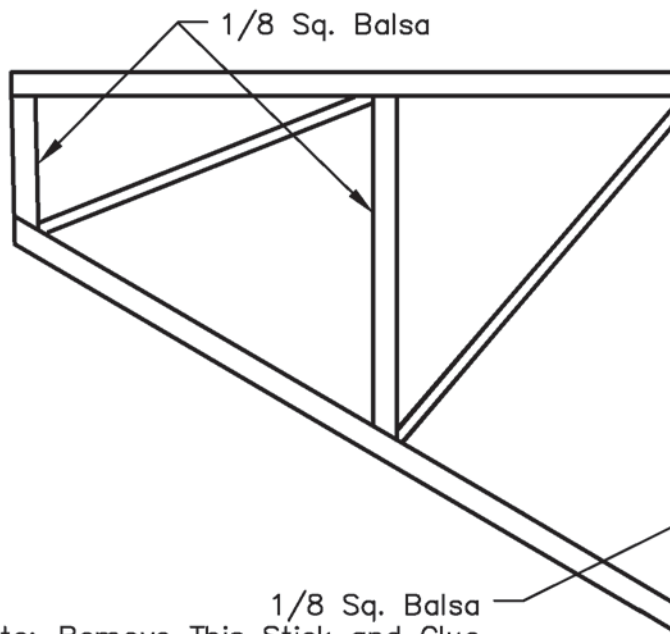
Wing Alignment
Make from 3/16" Artists



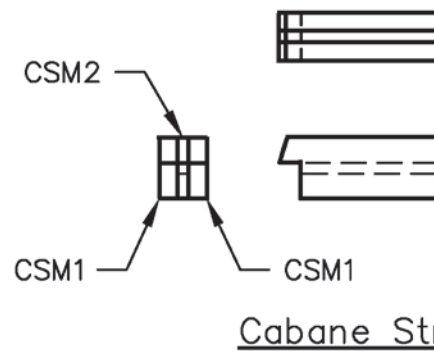


ent Jig
ts Foam Board

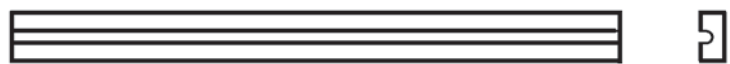
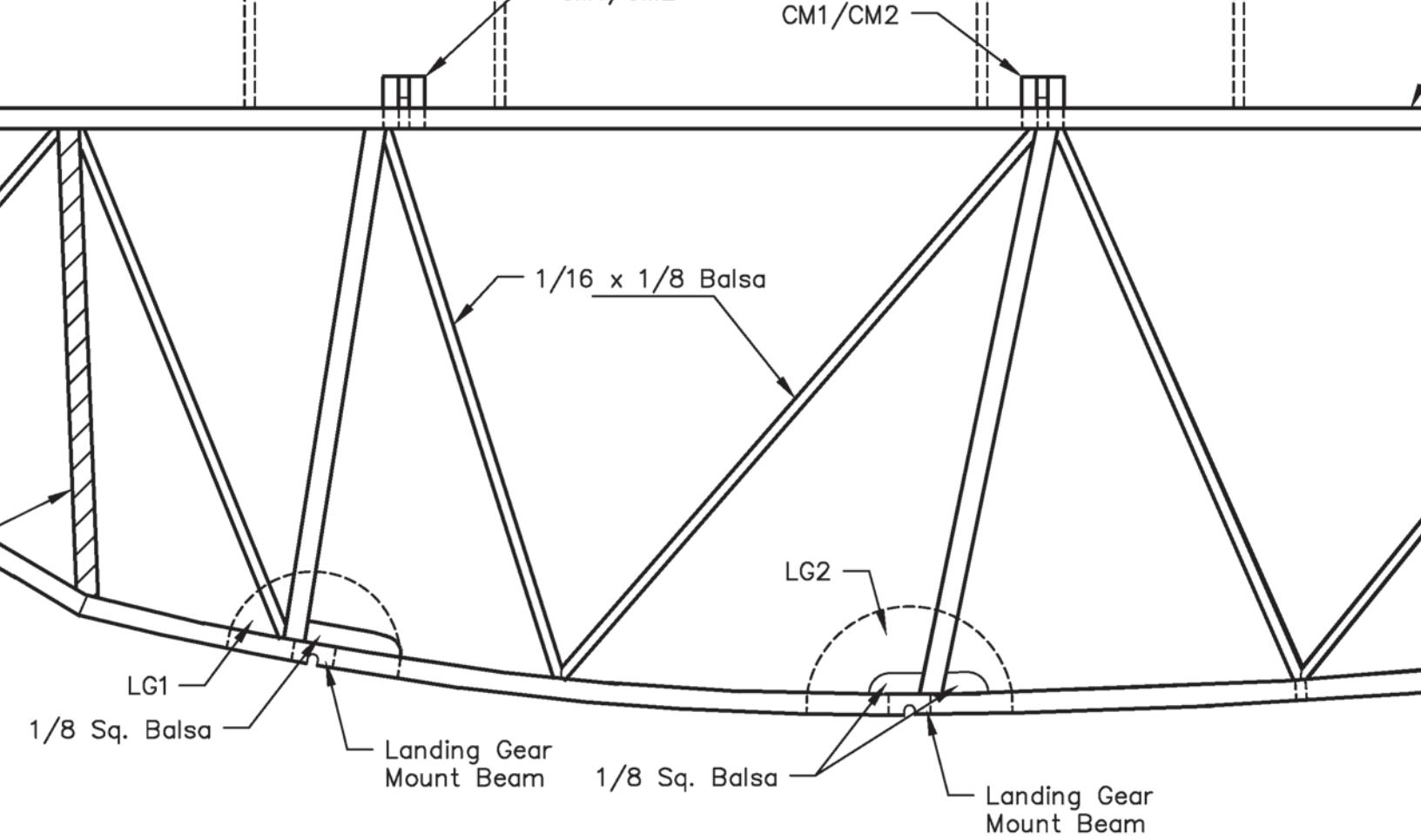




Note; Remove This Stick and Glue Firewall in at This Location when the Fuselage Sides are Joined

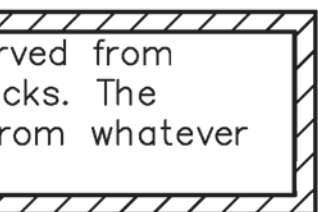


Note: The Engine is Carved from Balsa or Blue Foam Blocks. Details are Fabricated from what is Handy.



Landing Gear Mount Beam
Make from 1/8 x 1/4 Balsa.
Gouge a 1/16 Slot 2 Req.

Strut Mount Assembly Drawing

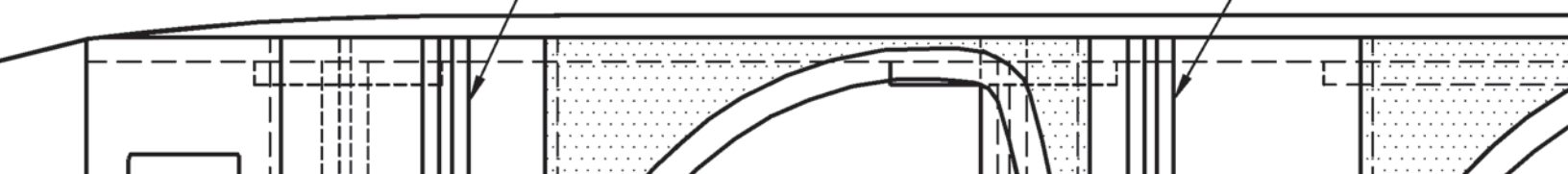


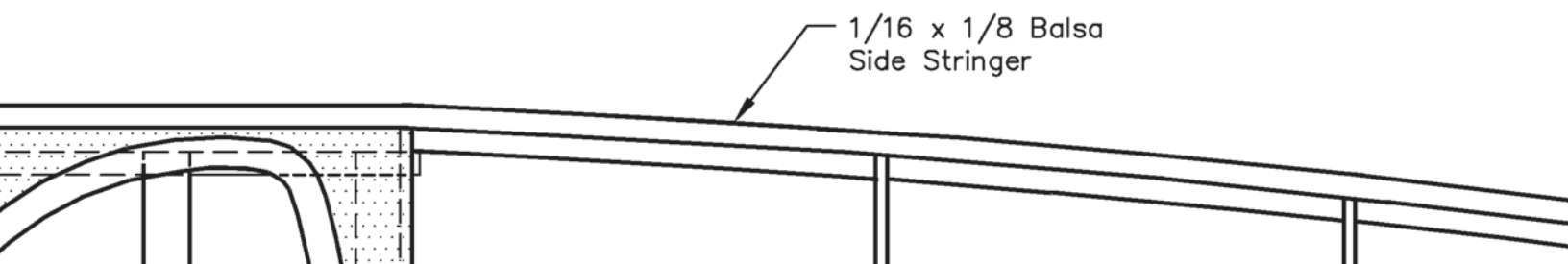
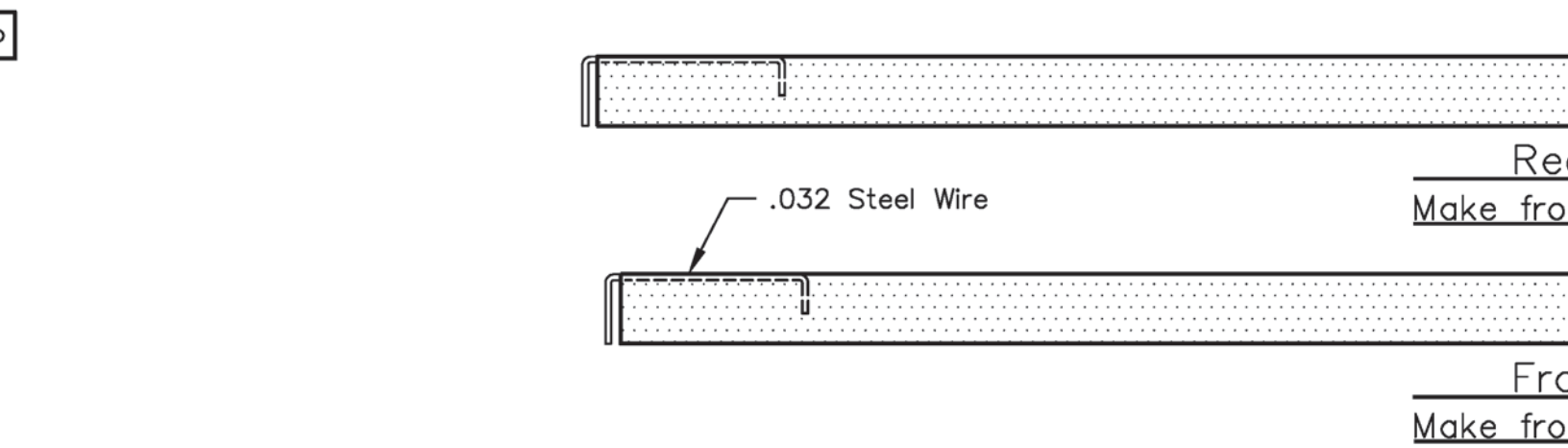
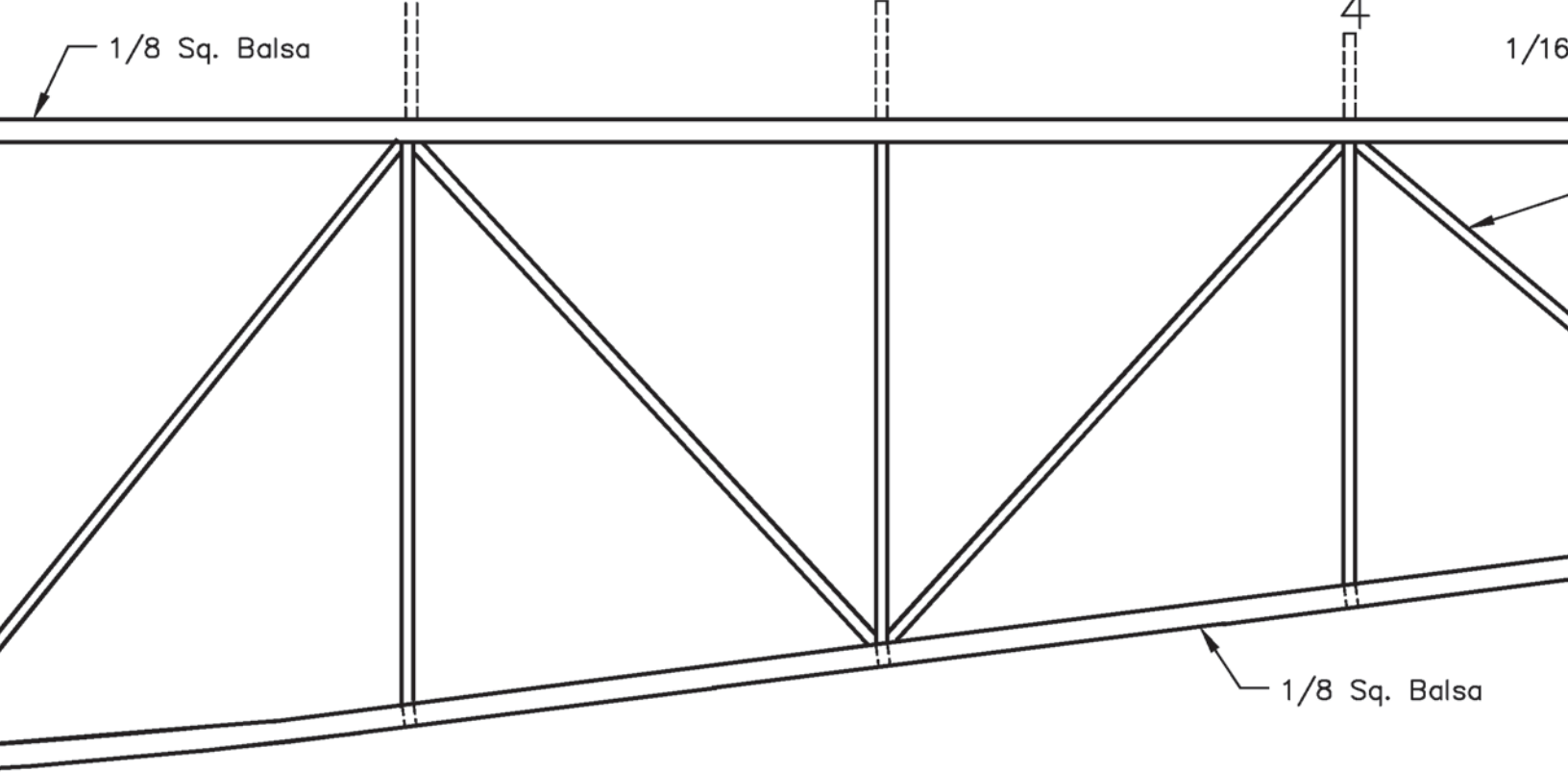
rved from
 cks. The
 rom whatever

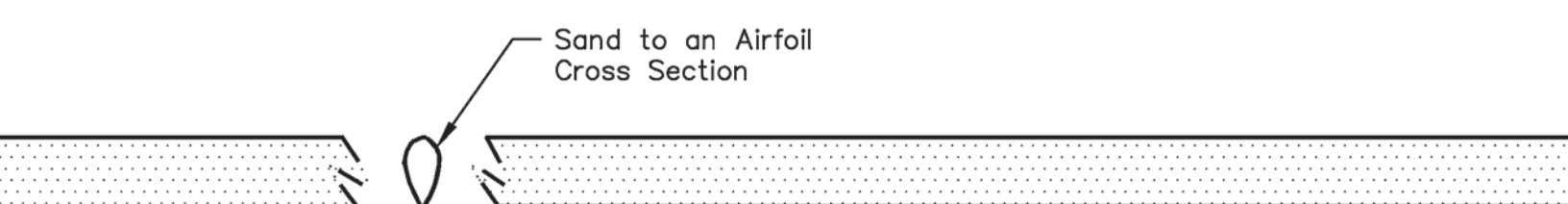
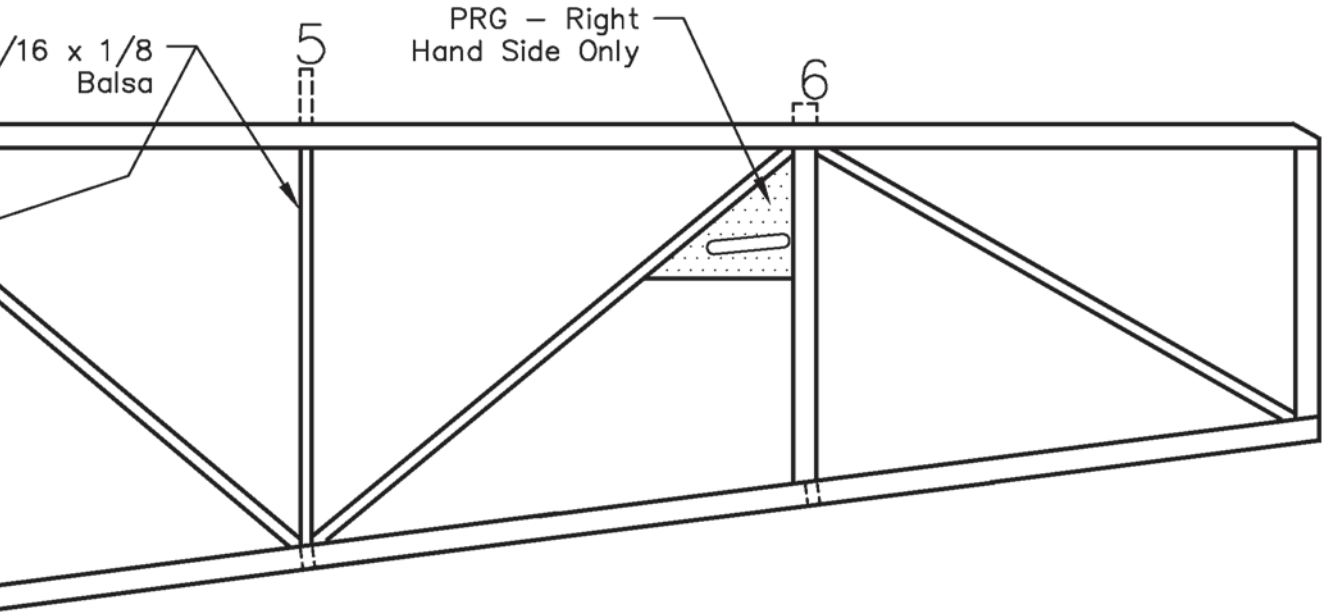
Cabane Strut Mount

Fuselage Top View

Cabane Strut Mount

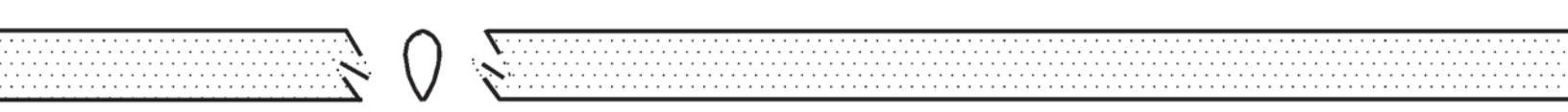






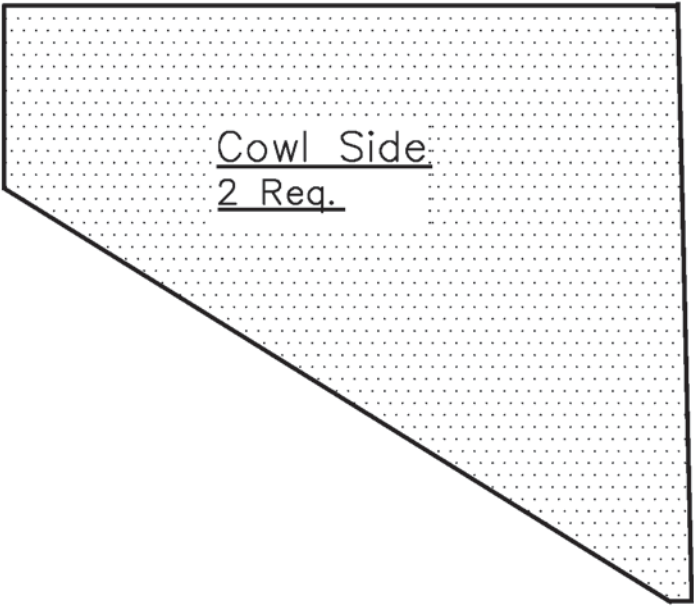
Rear Lift Strut
from 3/16 x 3/8 Balsa

Note: Struts are Shown at Actual Length

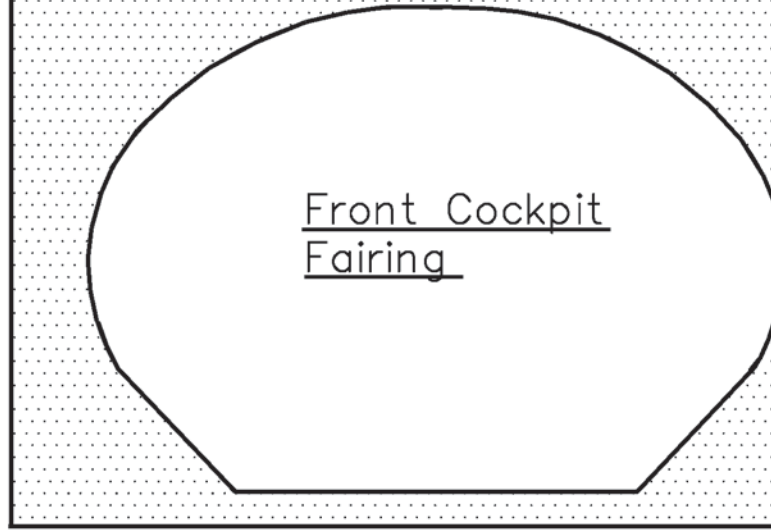


Front Lift Strut
from 3/16 x 3/8 Balsa

Note: Elevator Pushrod is a .032 I. D. Plastic Tube with a .025 Steel Wire Pushrod with a Z-Bend at Both Ends

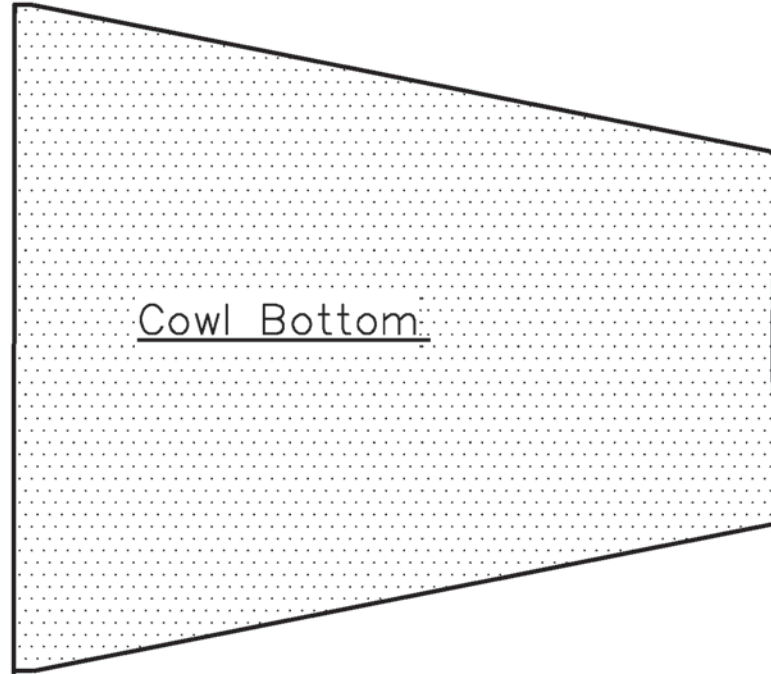


Cowl Side
2 Req.

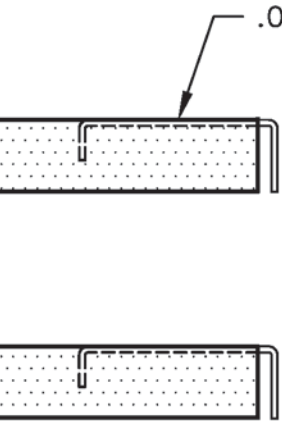


Front Cockpit
Fairing

Cutting Patterns for

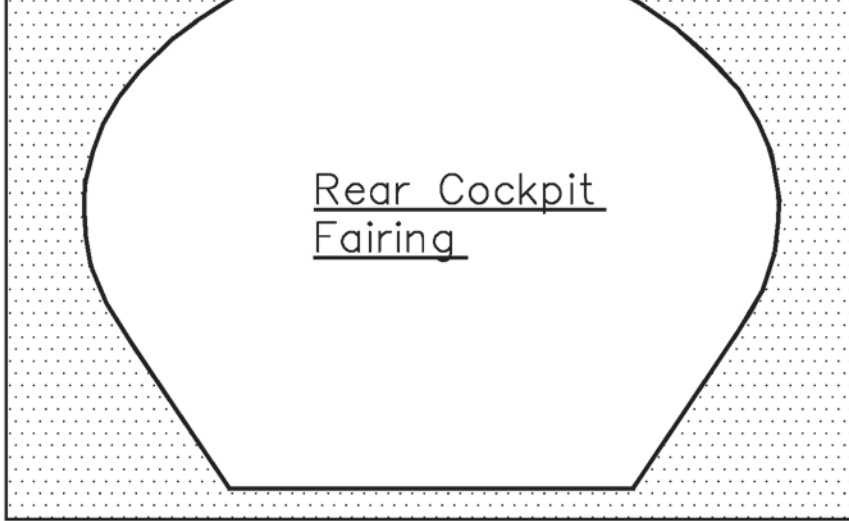


Cowl Bottom



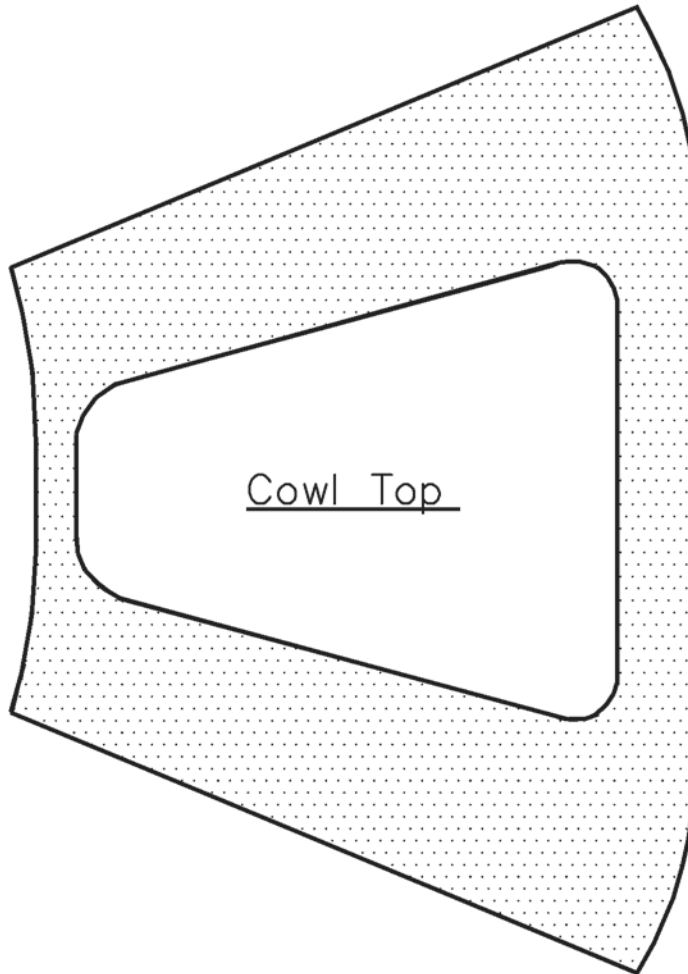
.032 Steel Wire

1/16 x 1/8
Balsa Fill

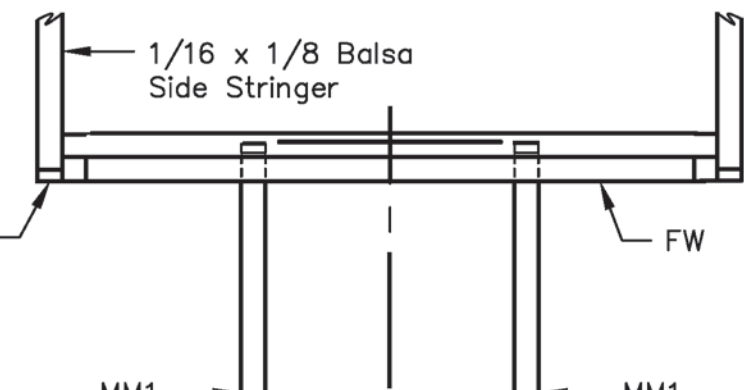


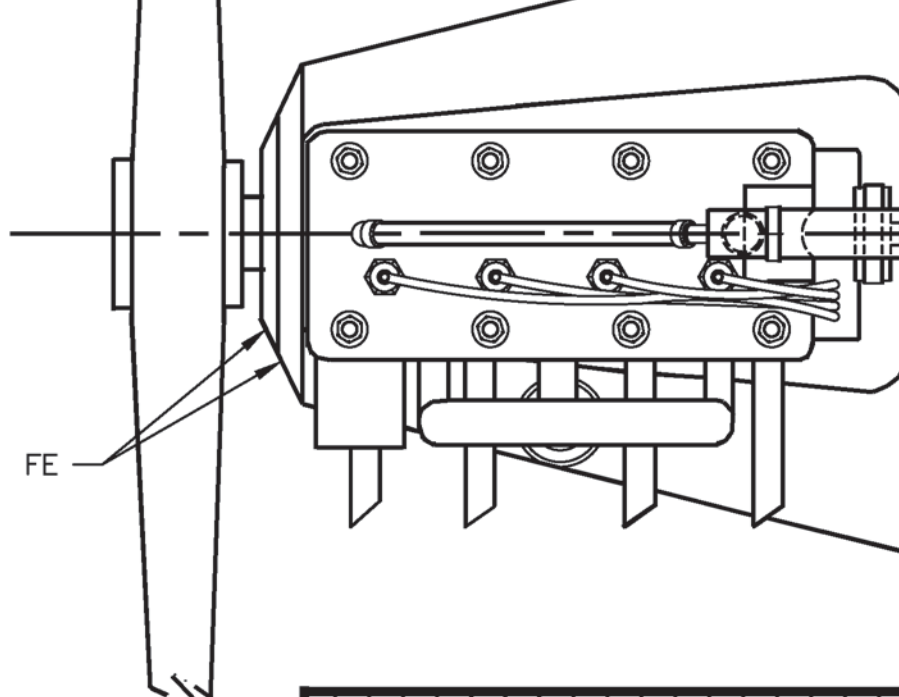
Rear Cockpit
Fairing

or Parts made from Manila File Folder

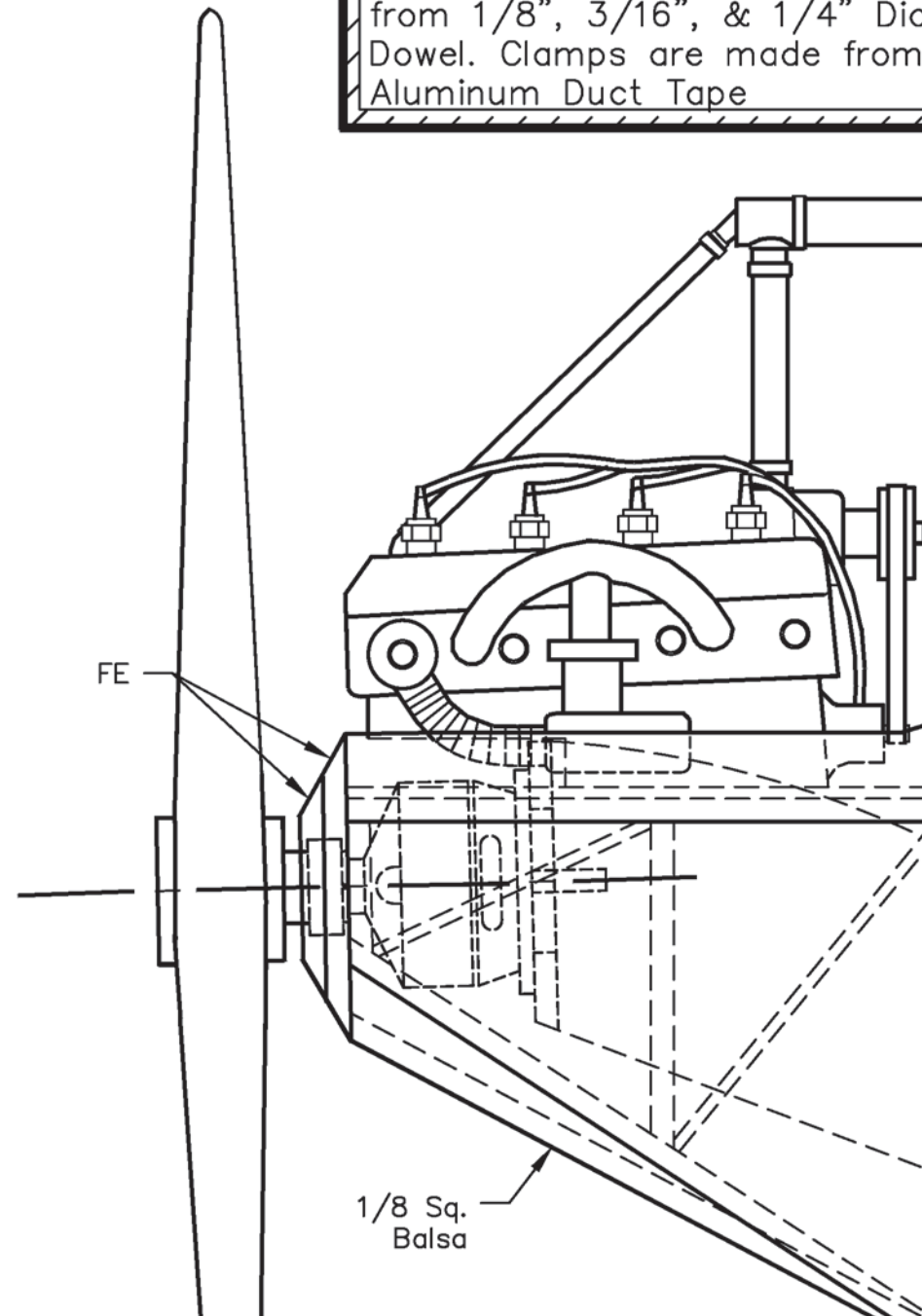


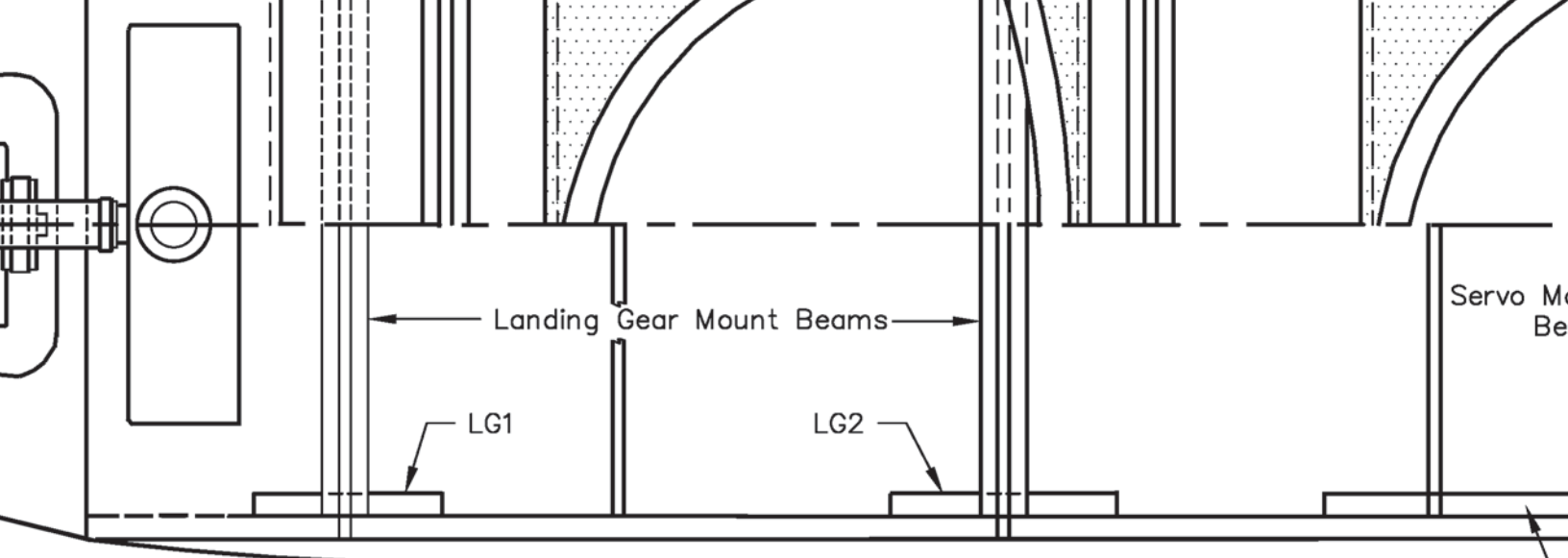
Cowl Top



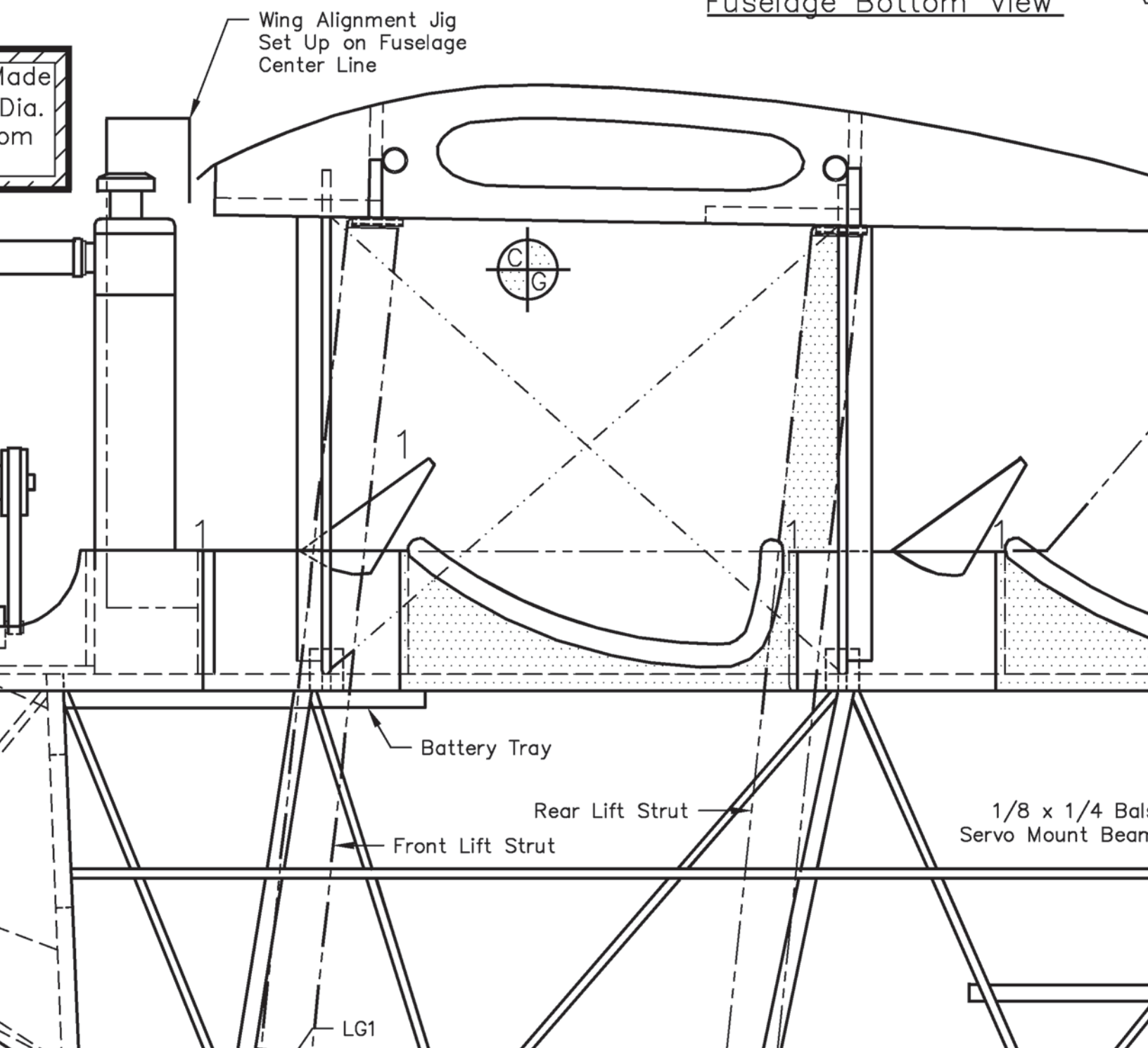


Note: Radiator Hoses are Made from 1/8", 3/16", & 1/4" Dia Dowel. Clamps are made from Aluminum Duct Tape





Fuselage Bottom View



Made
Dia.
om

Wing Alignment Jig
Set Up on Fuselage
Center Line

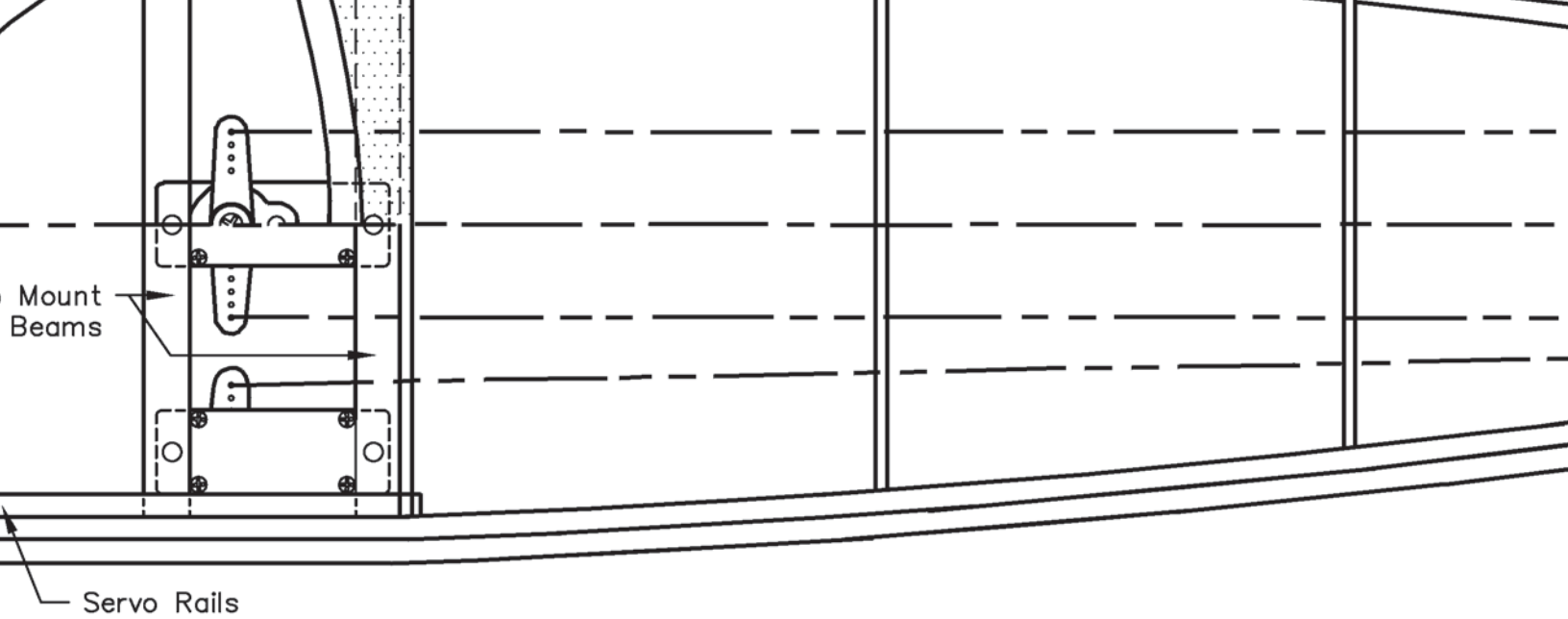
Battery Tray

Rear Lift Strut

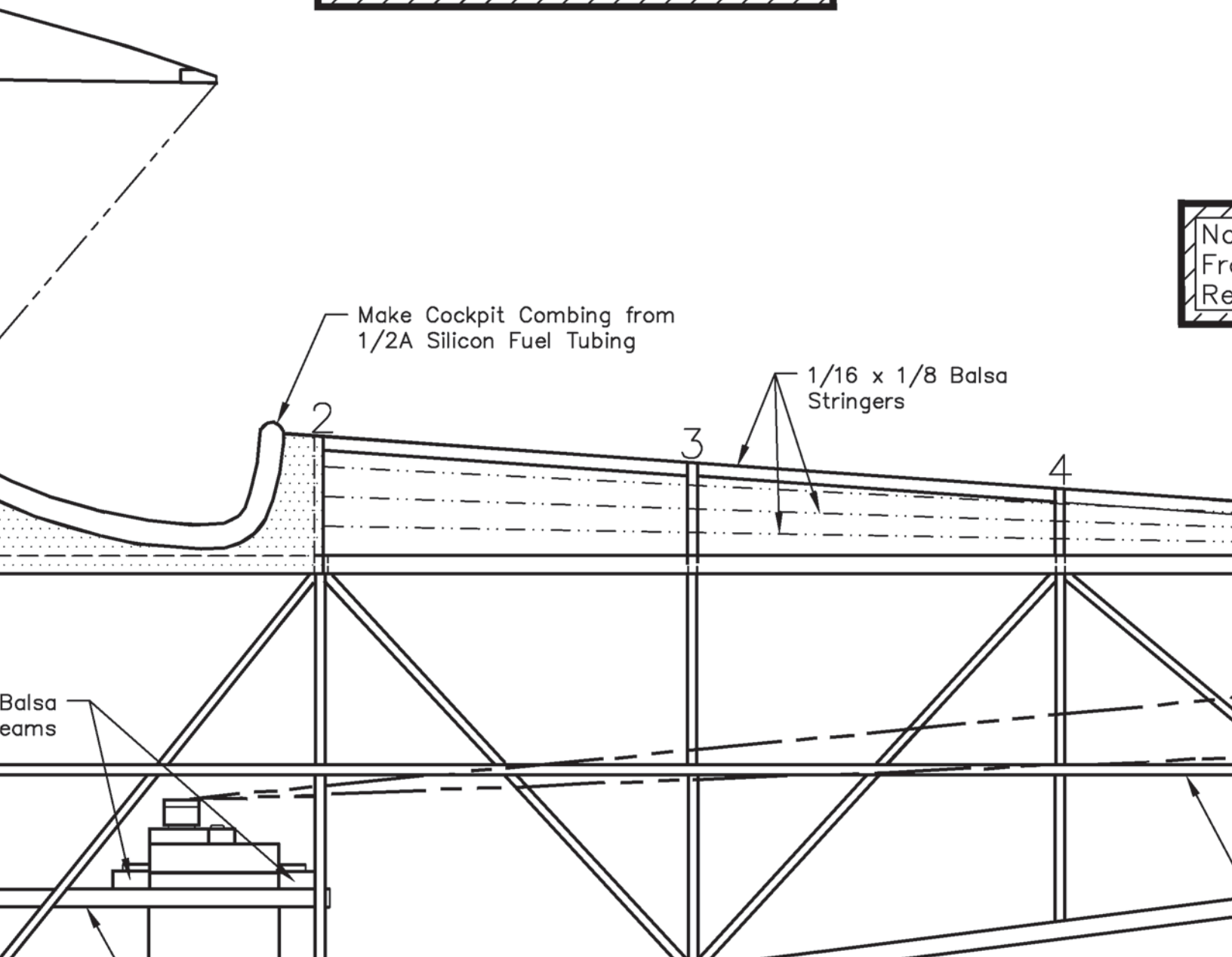
Front Lift Strut

1/8 x 1/4 Bal
Servo Mount Beams

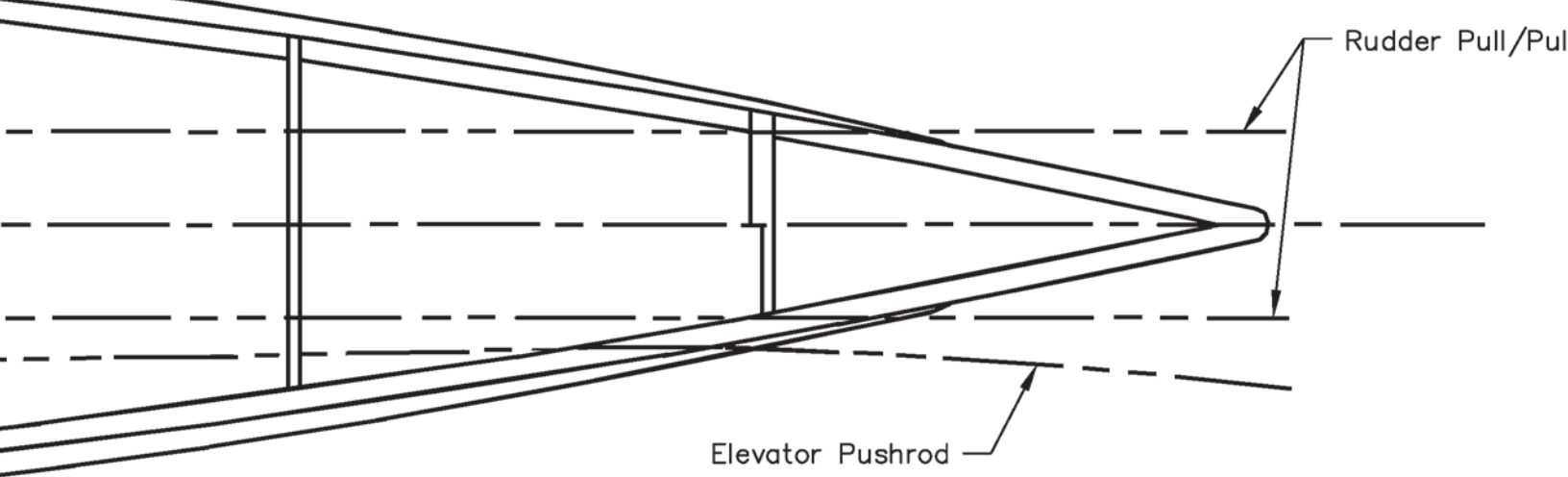
LG1



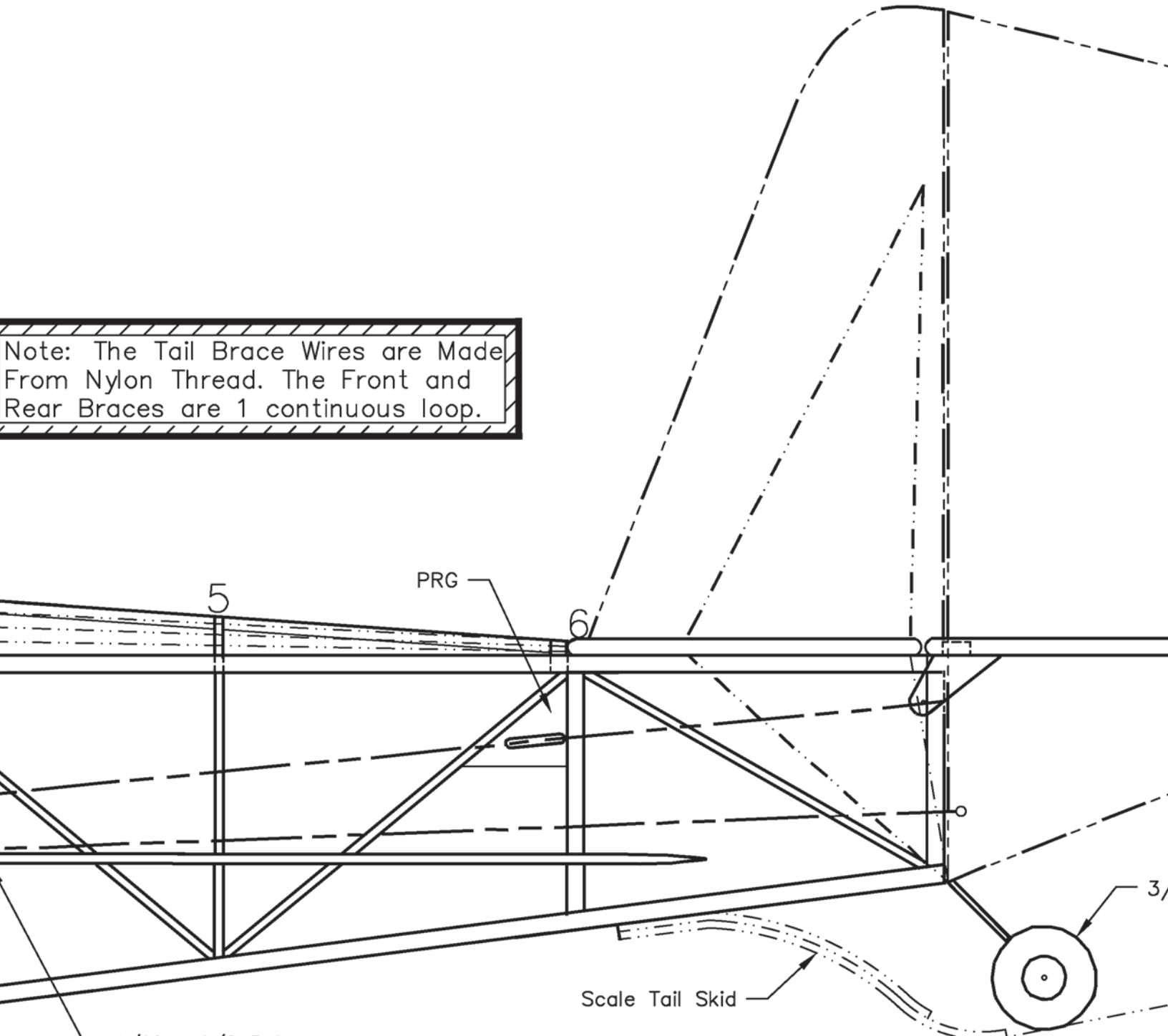
Note: The Main Landing Gear is Lashed to the Beams with Nylon Sewing Thread and Hardened with Thin Cy

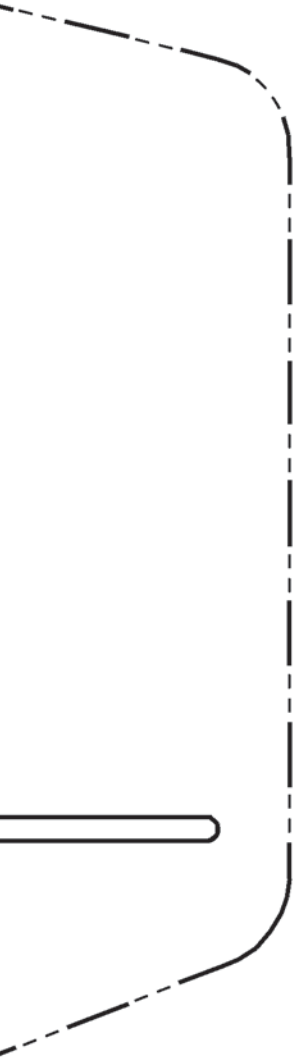


No
Fr
Re

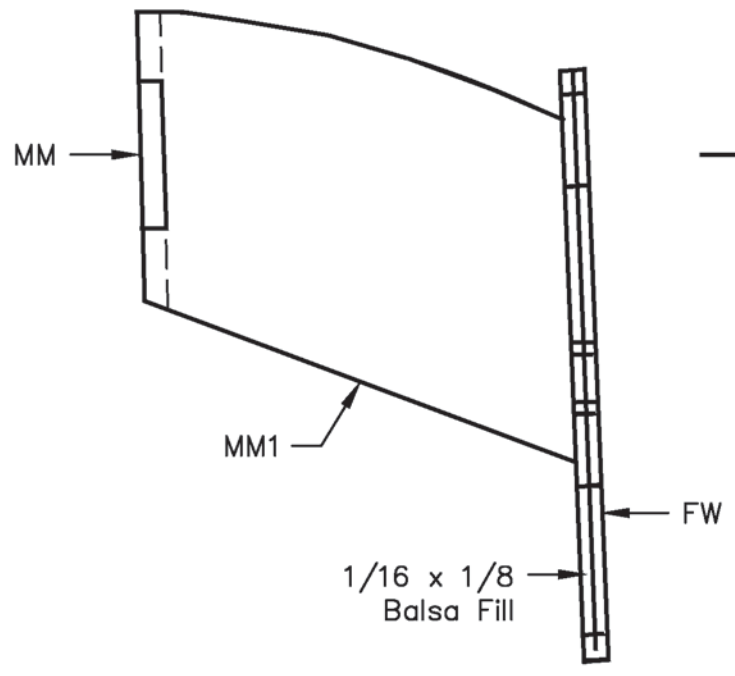


Note: The Tail Brace Wires are Made From Nylon Thread. The Front and Rear Braces are 1 continuous loop.

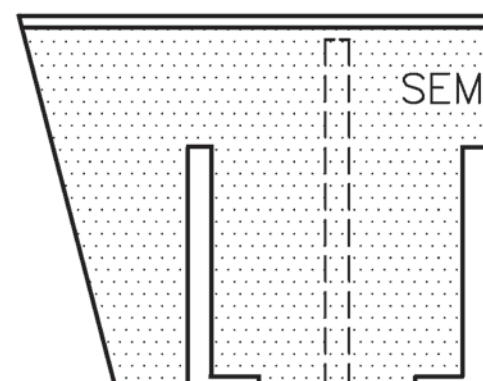


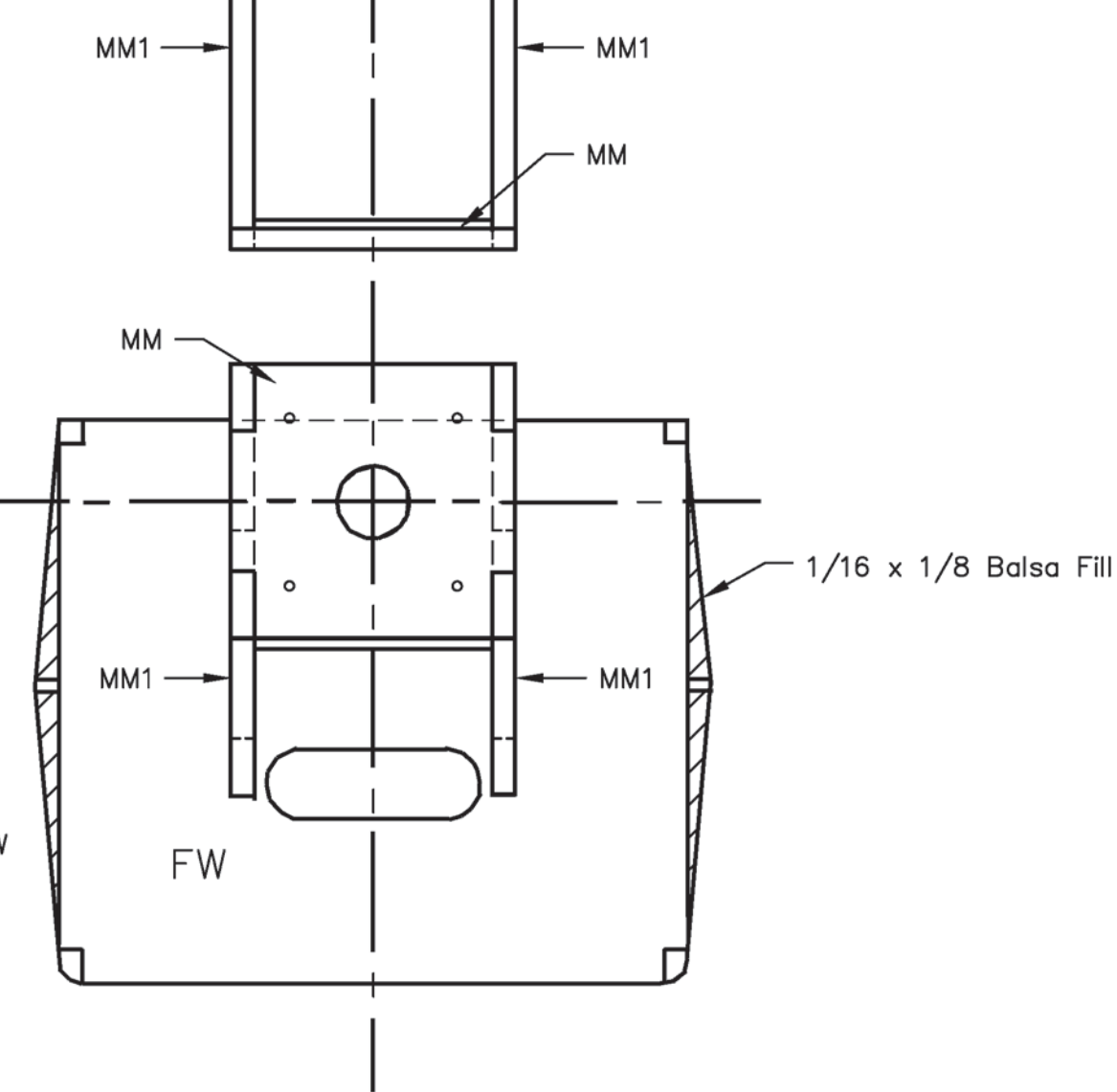


3/4" Tail Wheel

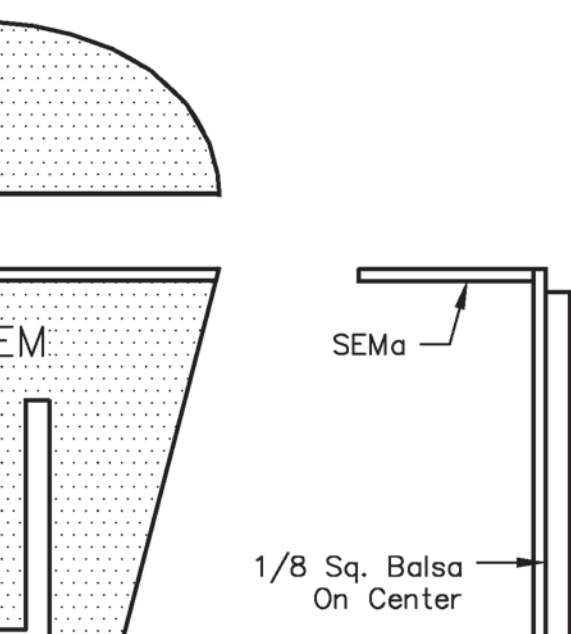


Motor M





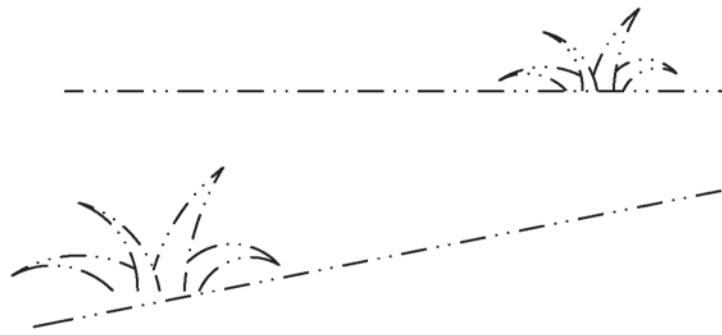
Mount Assembly Detail Drawing

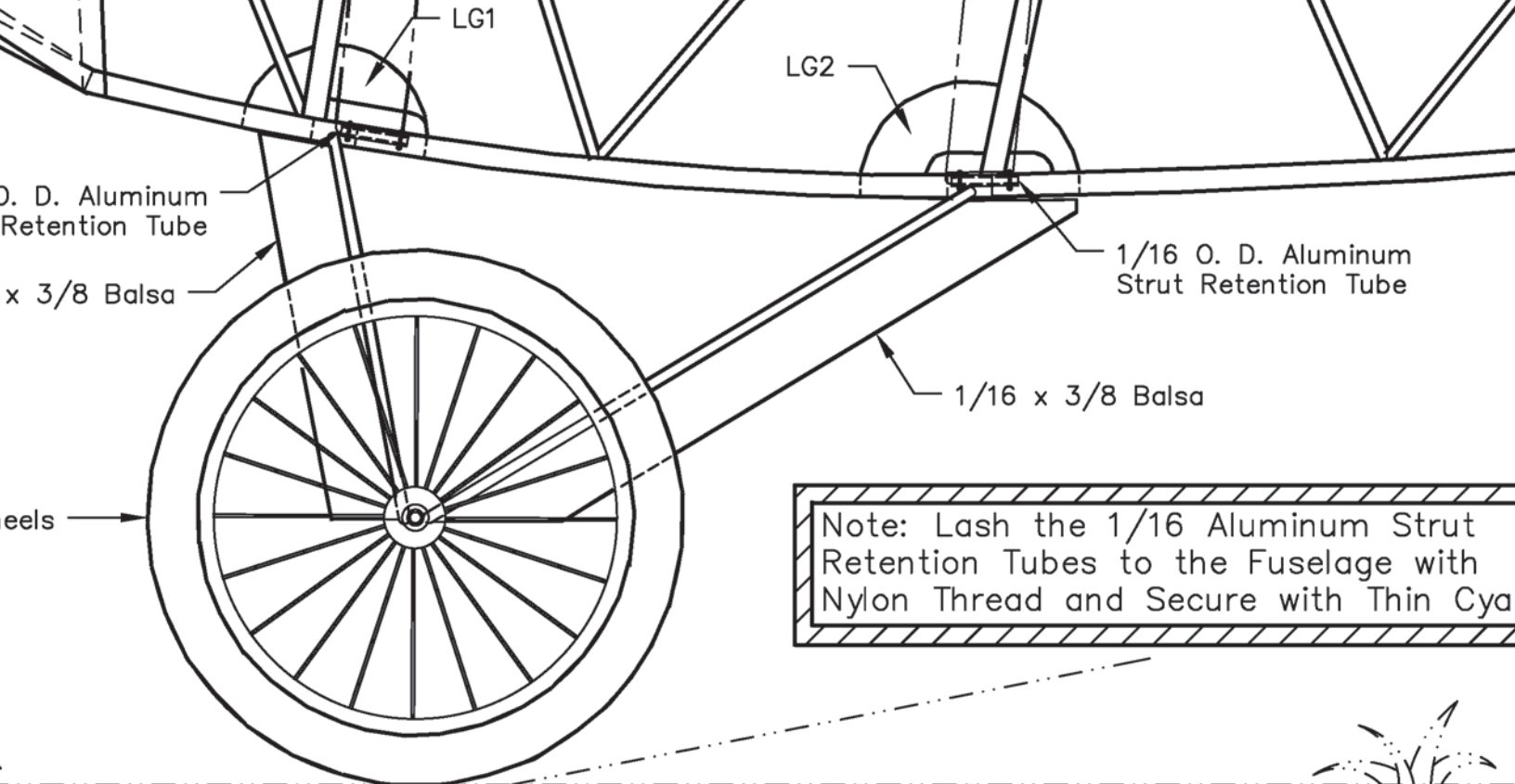


1/16 O. D.
Strut Ret

1/16 x 3

3" Main Wheel





1/16 O. D. Aluminum Retention Tube

1/16 x 3/8 Balsa

wheels

LG1

LG2

1/16 O. D. Aluminum Strut Retention Tube

1/16 x 3/8 Balsa

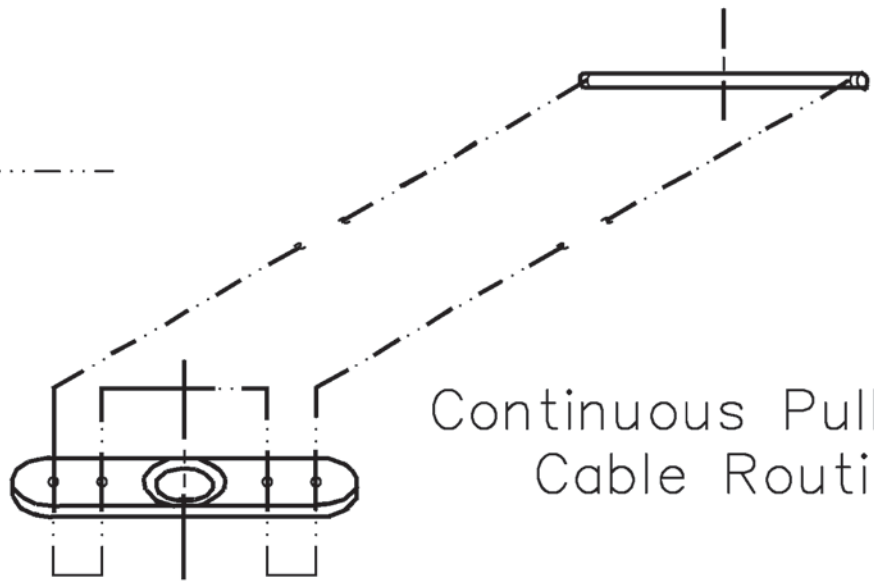
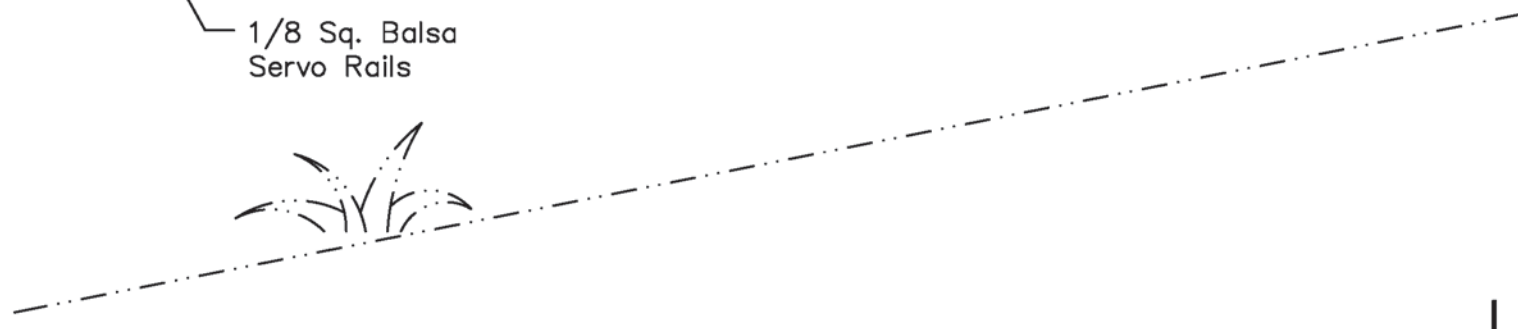
Note: Lash the 1/16 Aluminum Strut Retention Tubes to the Fuselage with Nylon Thread and Secure with Thin Cyanoacrylate.

Battery Tray
Make from 1/8 Lite Ply

Elevator and Rudder
Servo Location

1/8 Sq. Balsa
Servo Rails

ya



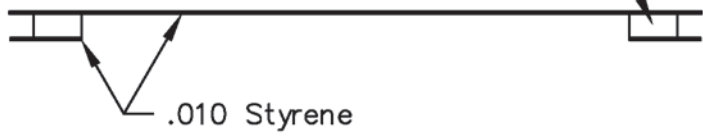
Continuous Pull/Pull
Cable Routing

Scale Tail Skid

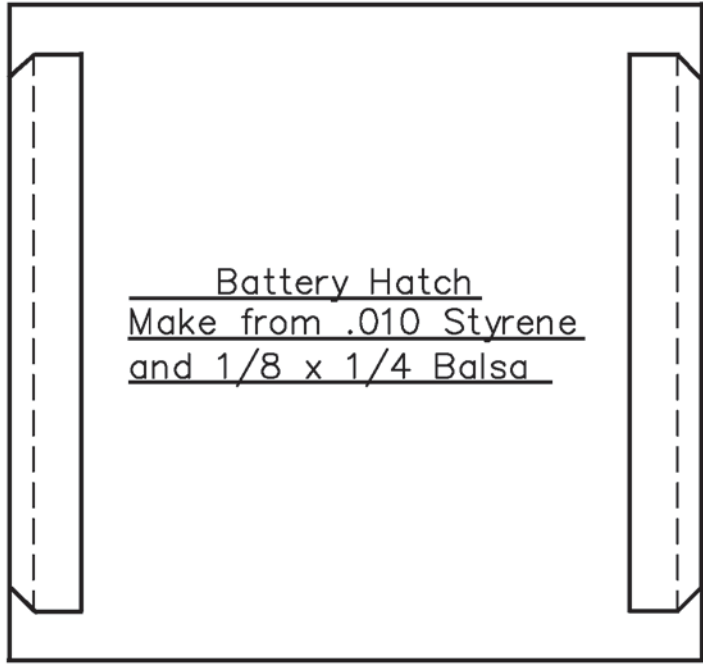
1/16 x 1/8 Balsa
Side Stringer



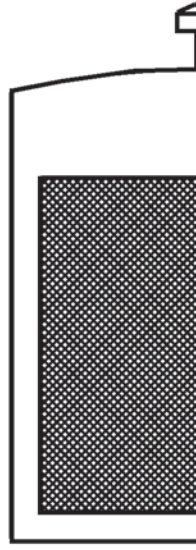
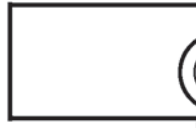
1/8 x 1/4 Balsa



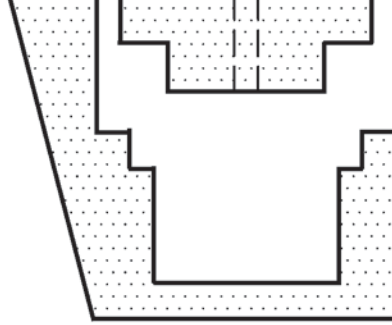
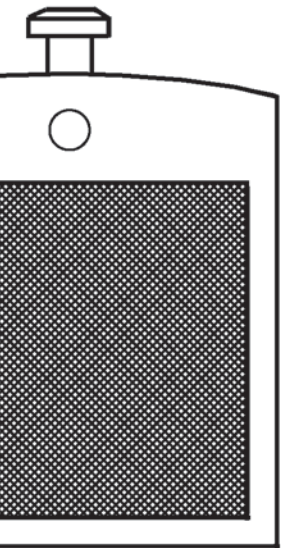
.010 Styrene



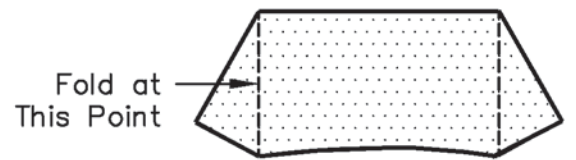
Battery Hatch
Make from .010 Styrene
and 1/8 x 1/4 Balsa



Radi
Make f
and

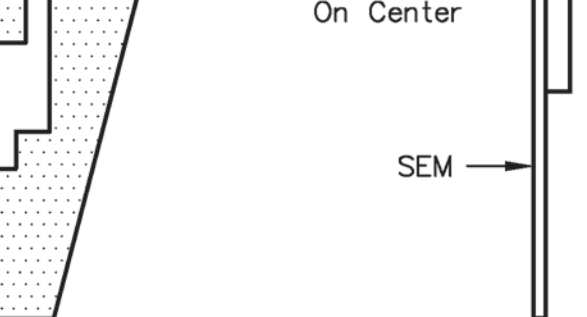


Dummy Engine M
Make the P



Windshield Pattern
Make from .008 Acetate

Radiator Detail Drawing
Make from Balsa or Blue Foam
and Nylon Window Screen



Wing Mount Assembly Drawing
Parts from 1/16 Balsa

Copyright 2017  and **ModelAviation**
ACADEMY OF MODEL AERONAUTICS
Bringing Modelers Together

Copying for resale of this drawing without
the written approval or consent of AMA
is expressly prohibited.

Pietenpol Aircamper

Span: 48" Len.: 30.25"

Wing Area: 400 Sq. Inches

Flying Weight: 14.7 oz.

Wing Loading: 5.3 oz./ Sq. Ft.

Des. by: Pat Tritle for Model Aviation
Magazine 3-20-2017 Sht. 1 of 2

Plan No. 1103