

A8A

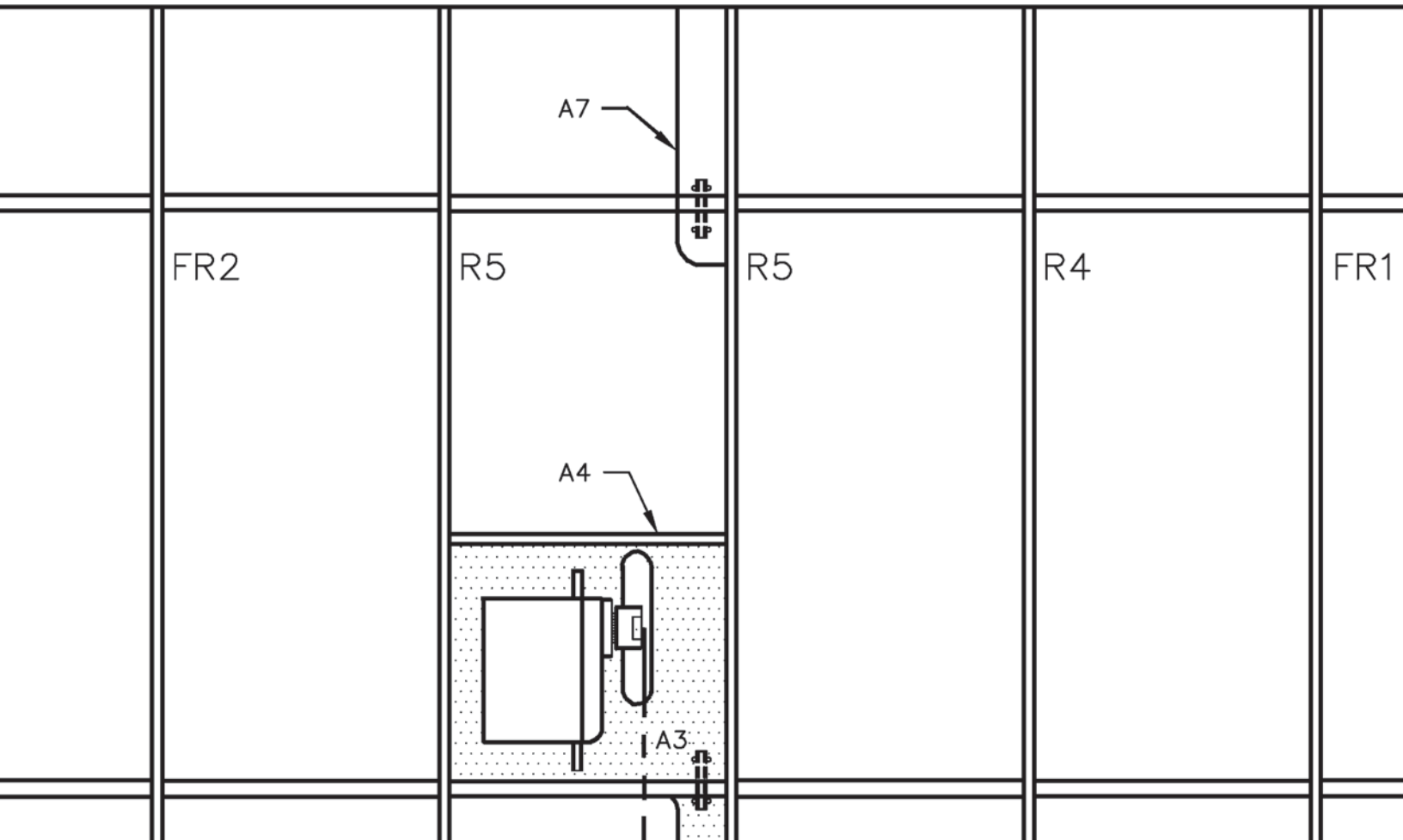
R7

FR2

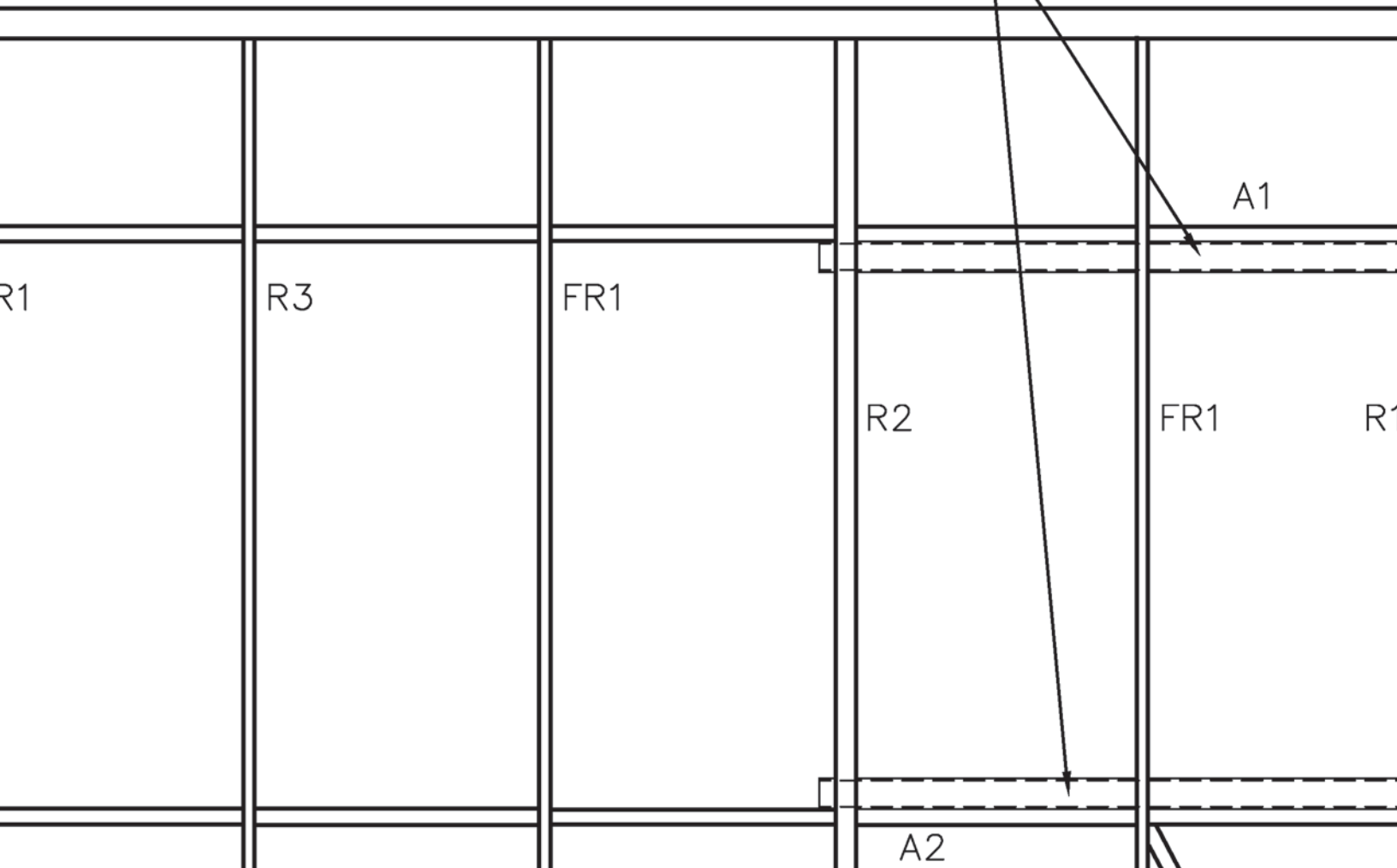
R6

A8B

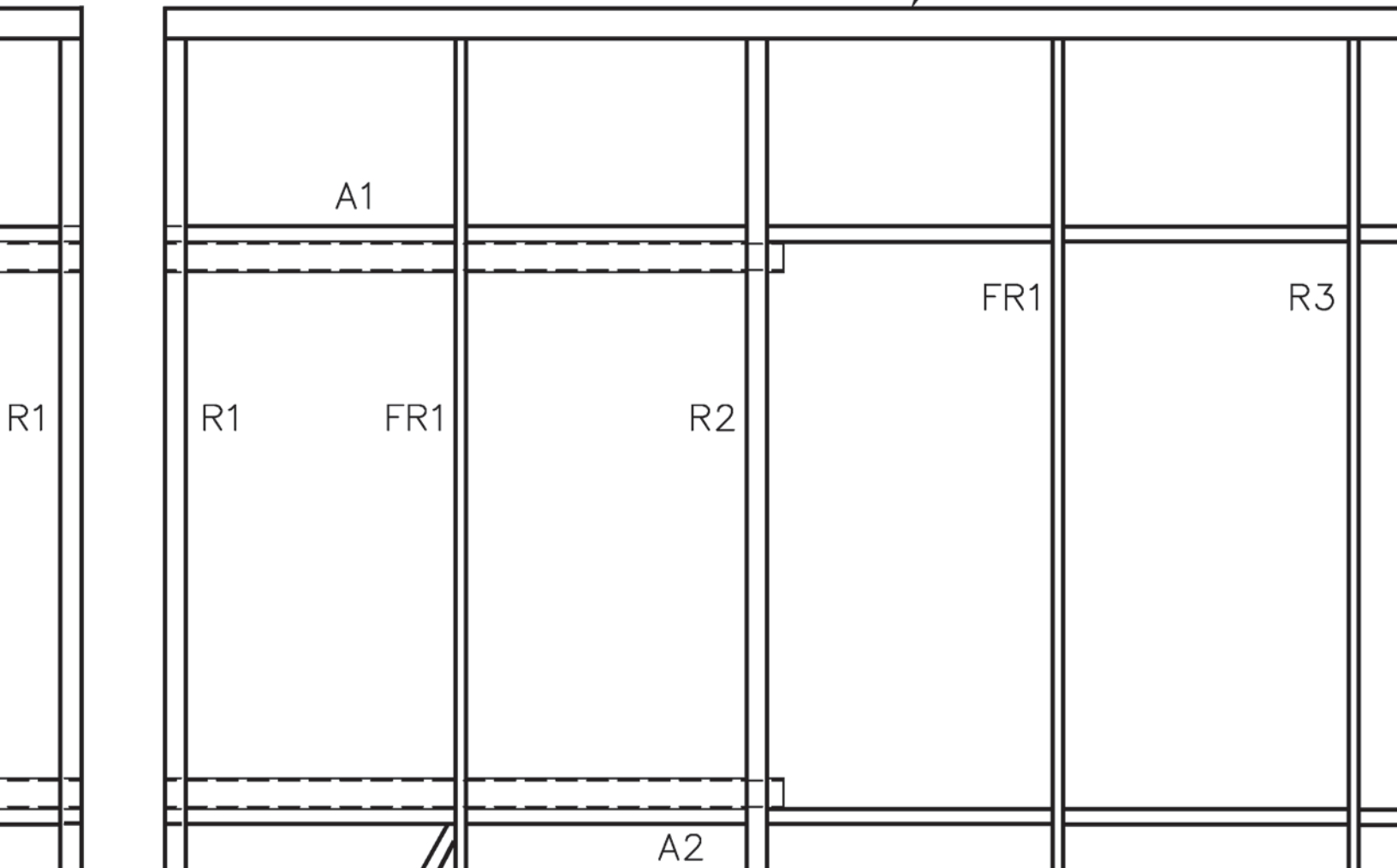
3/16 x 3/8 Balsa



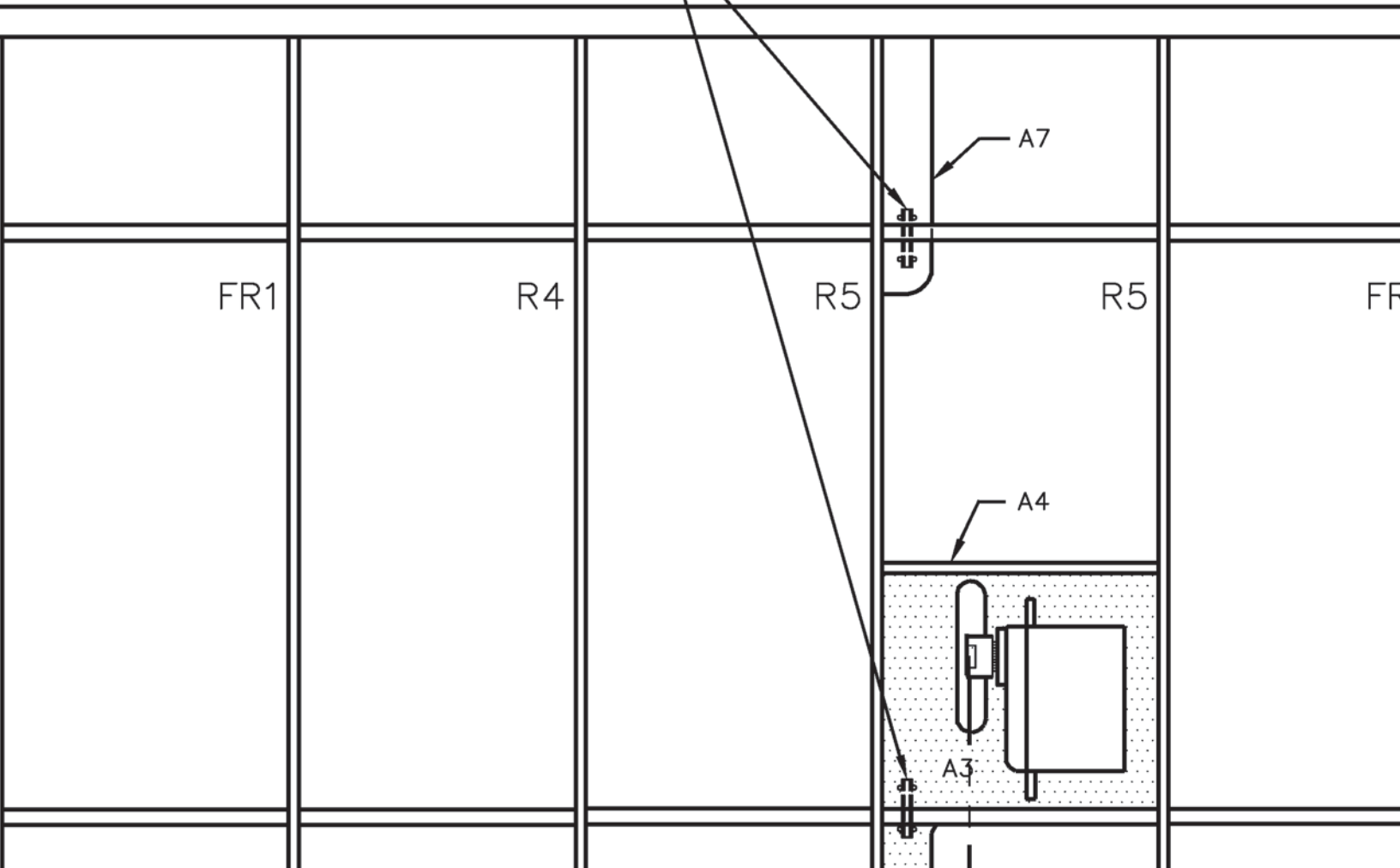
3/16 O. D.
Aluminum Tubing



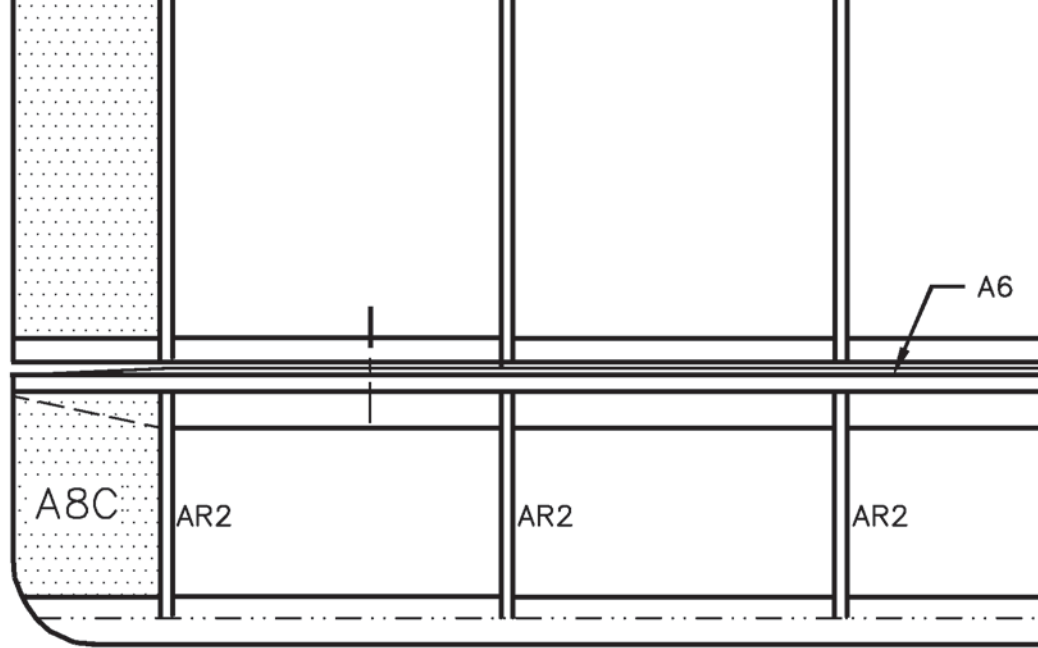
3/16 x 3/8 Balsa



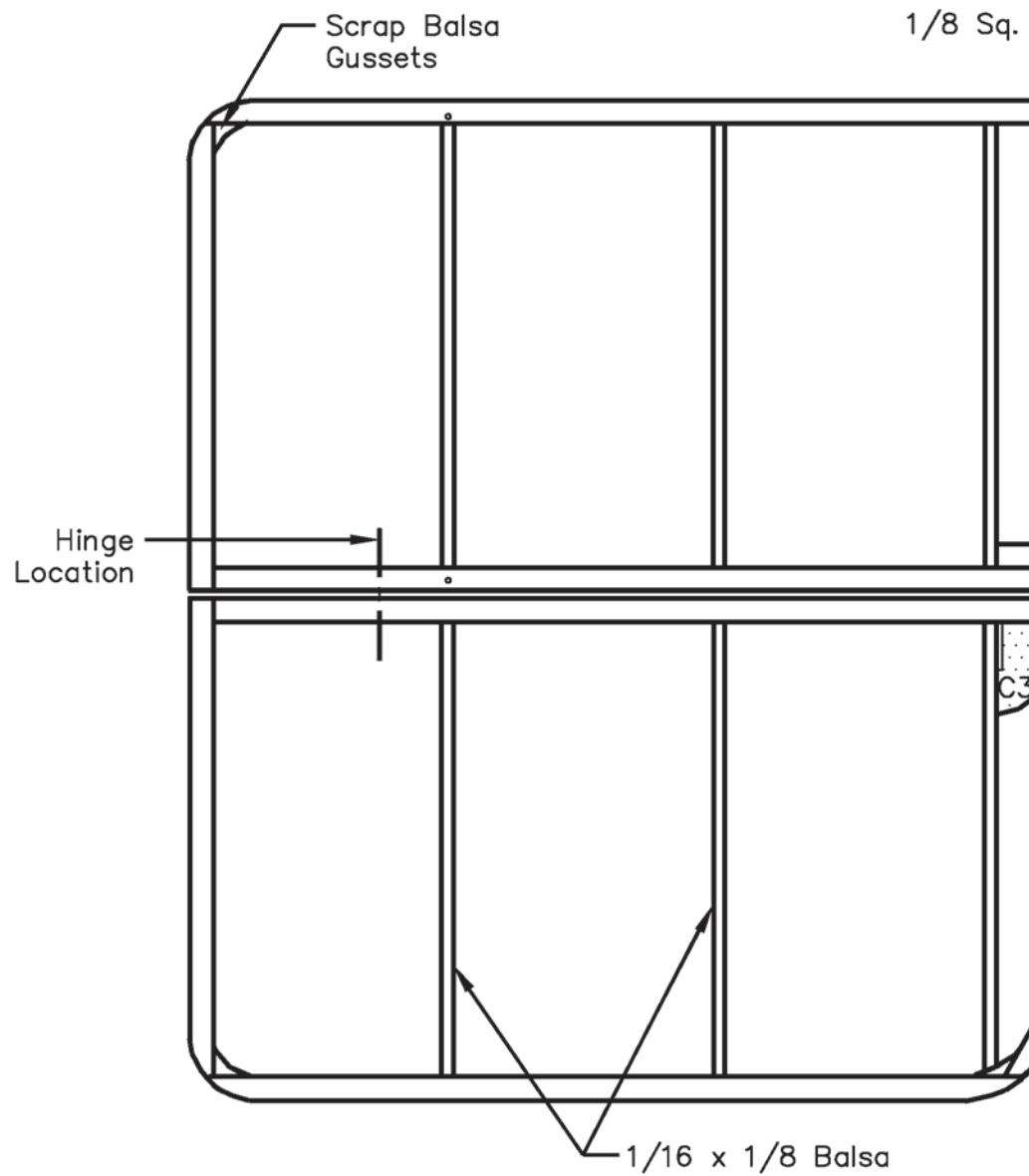
1/16 O. D. Aluminum
Strut Retention Tubes

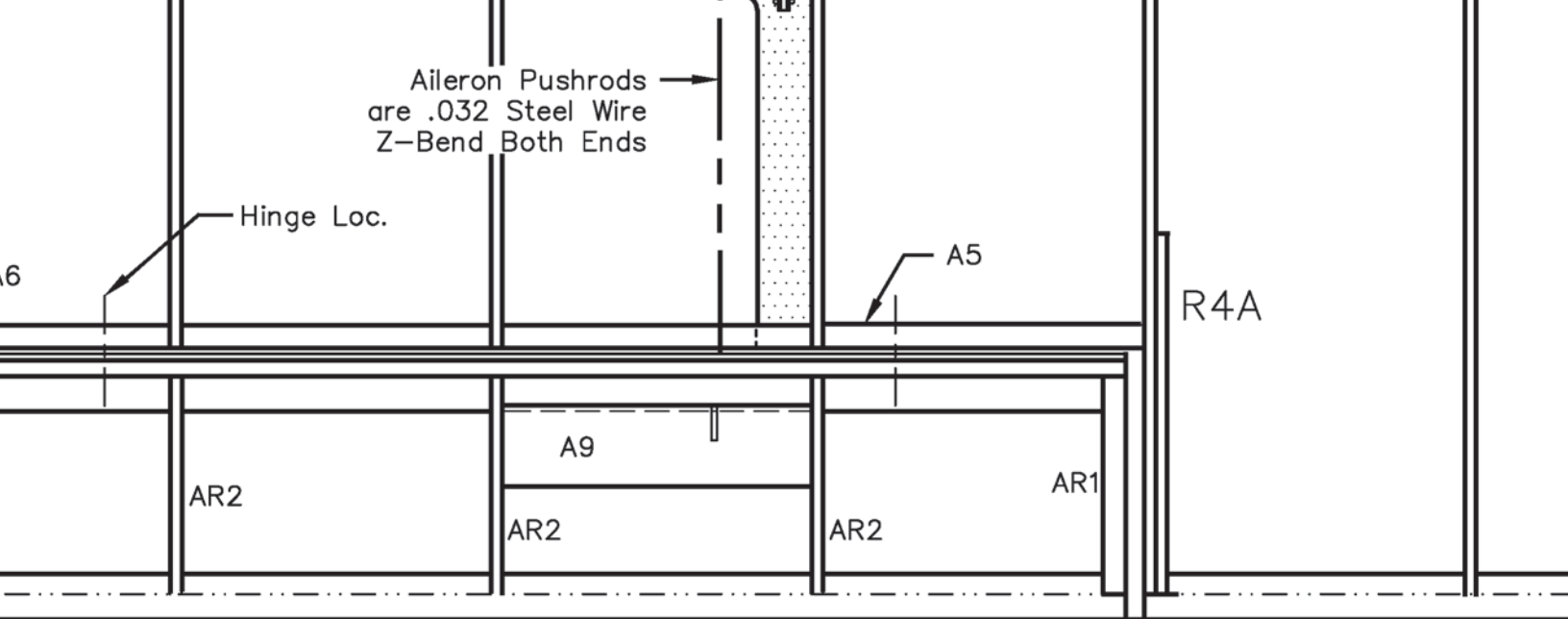


				A8A
FR2	R6	FR2	R7	
				A8B



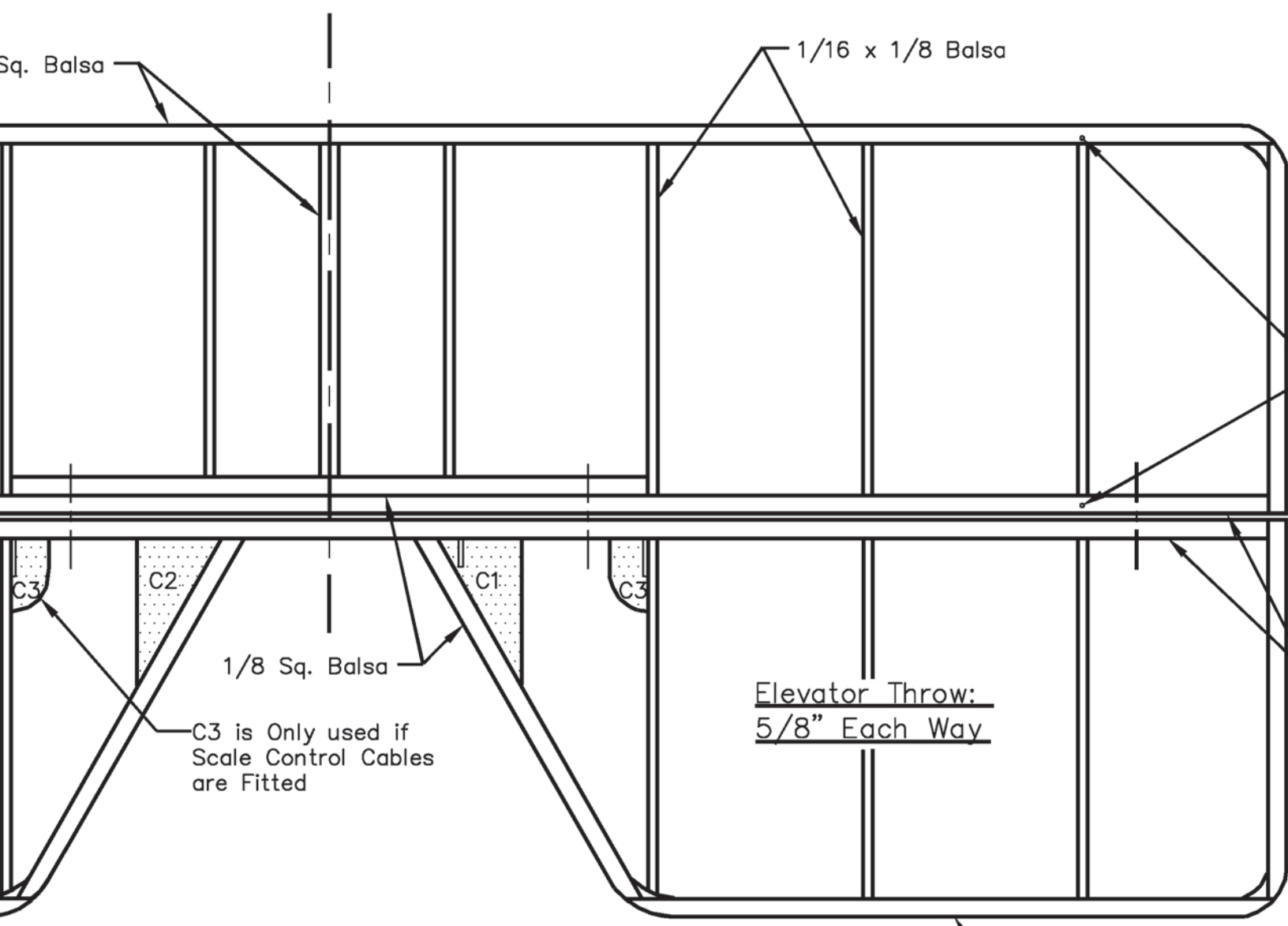
Aileron Throw: 5/8" Each Way



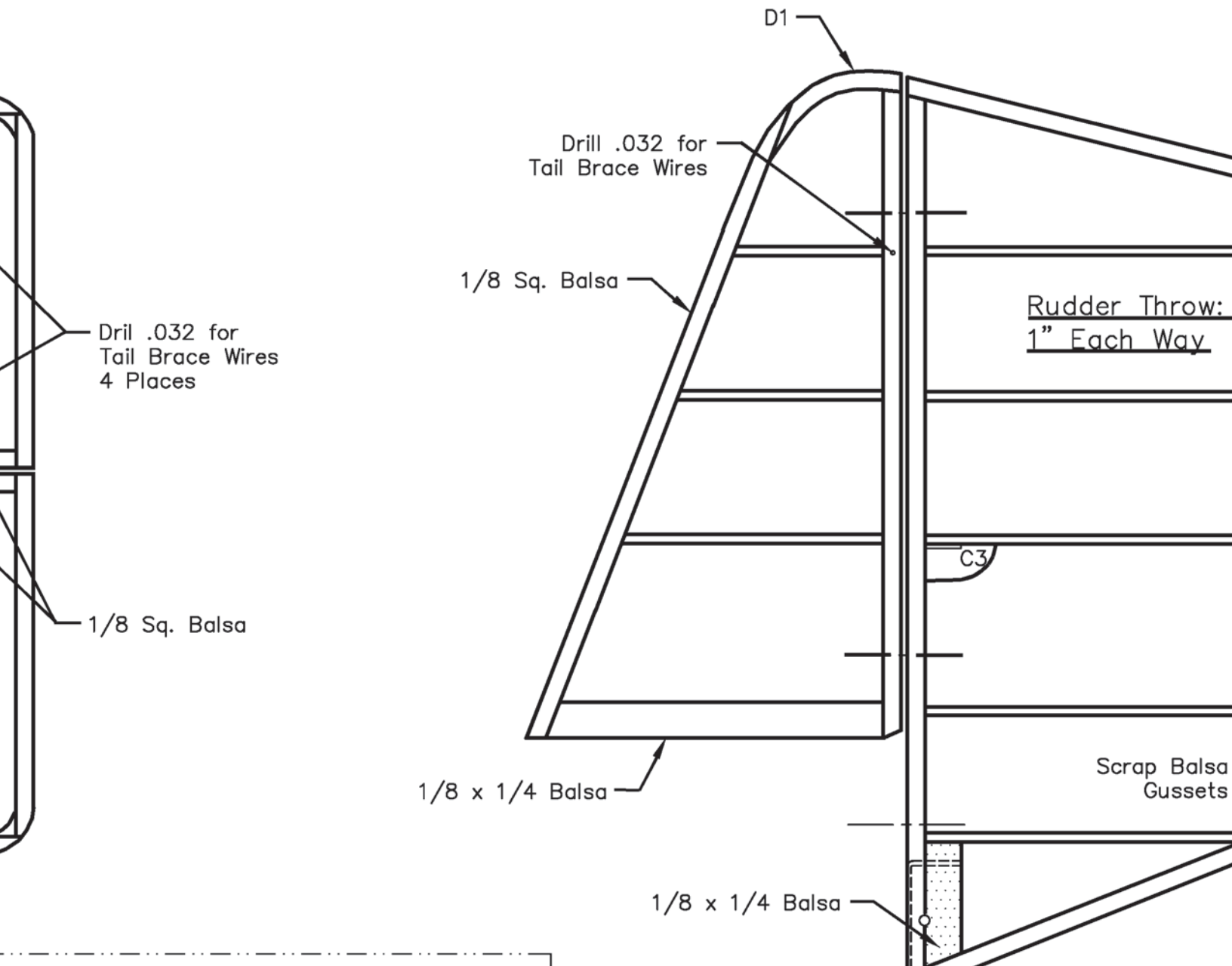
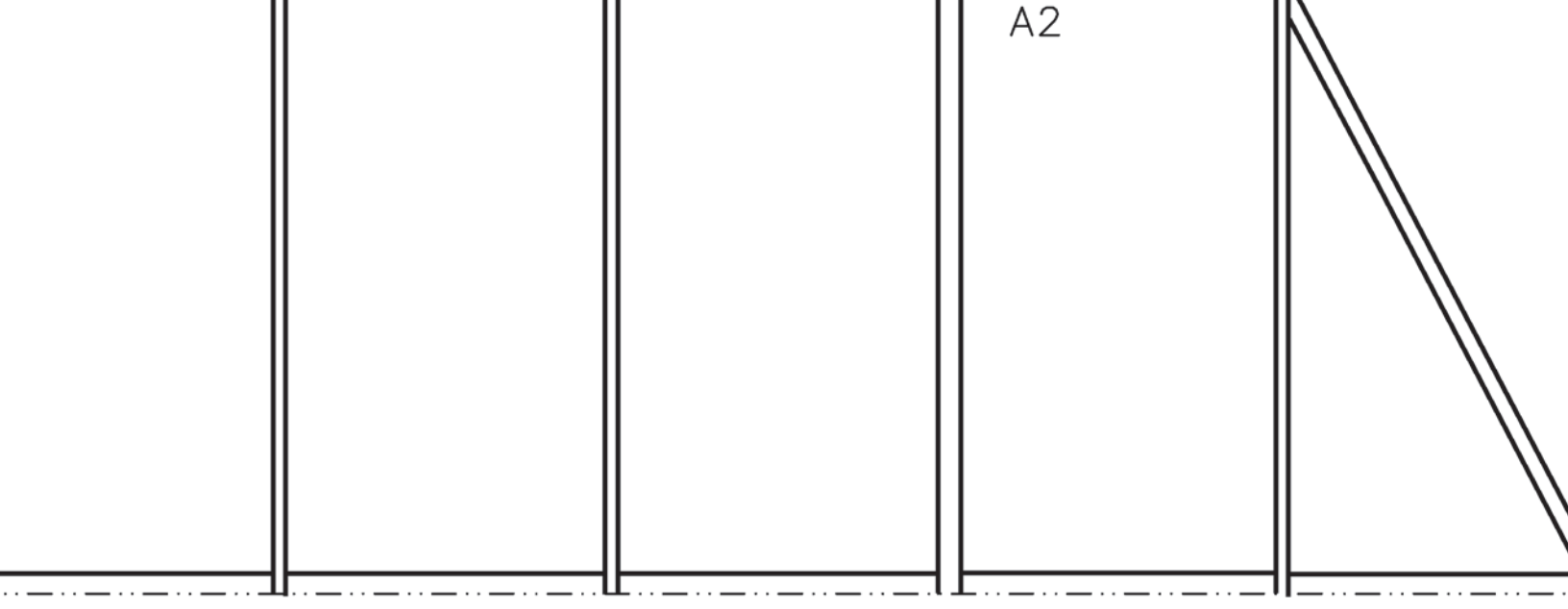


1y

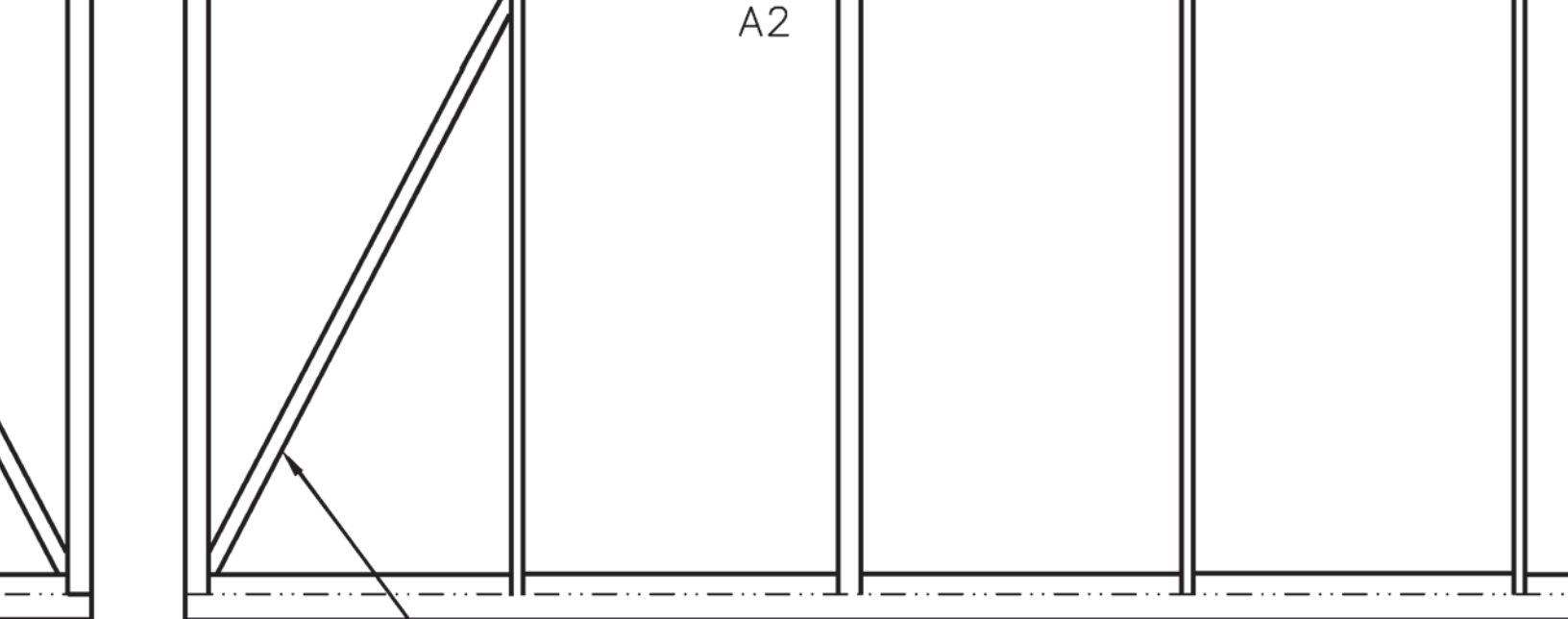
3/32 X 1/4 Balsa



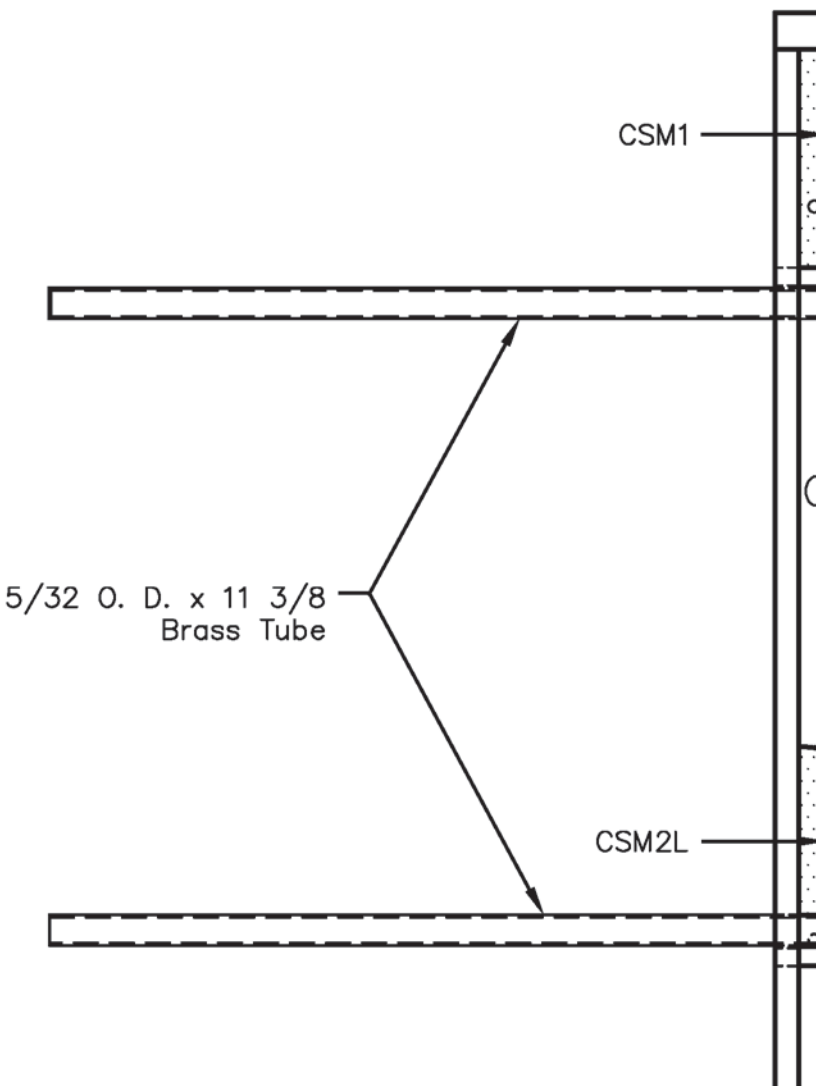
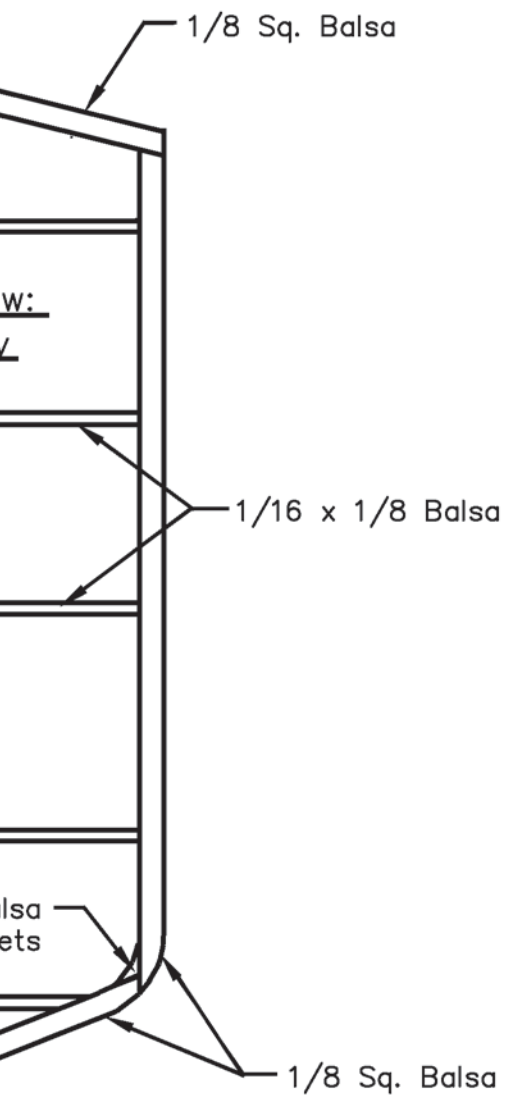
A2

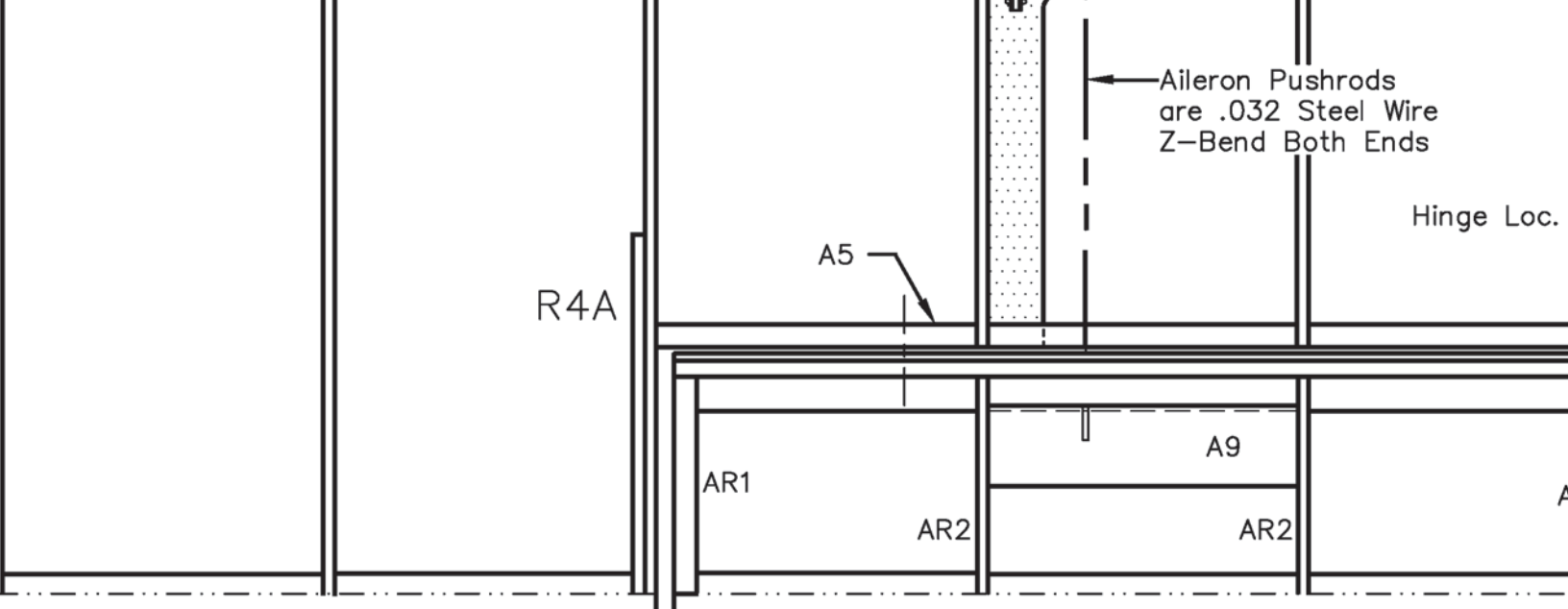


A2



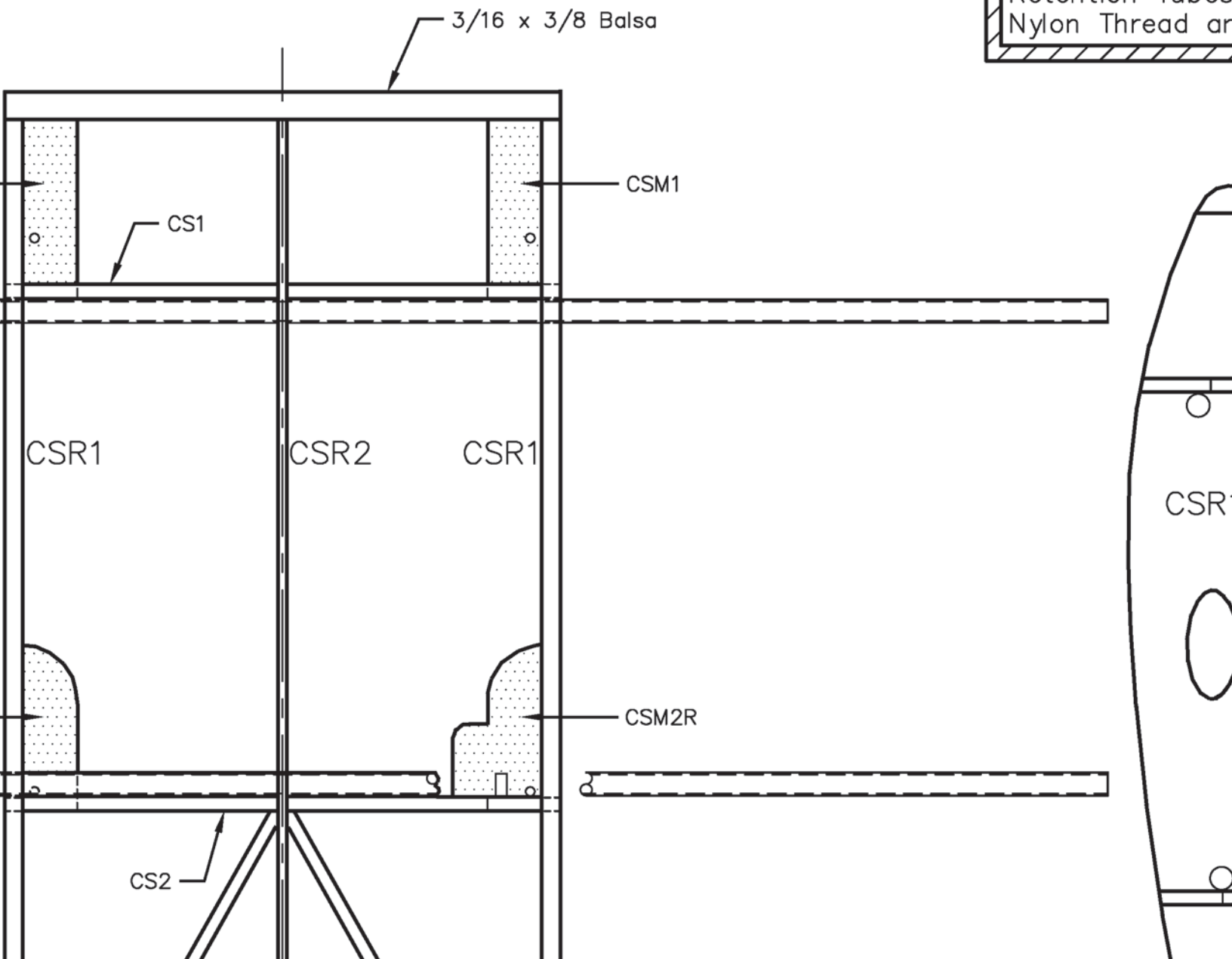
3/32 Sq. Balsa Brace
Glue in on Center

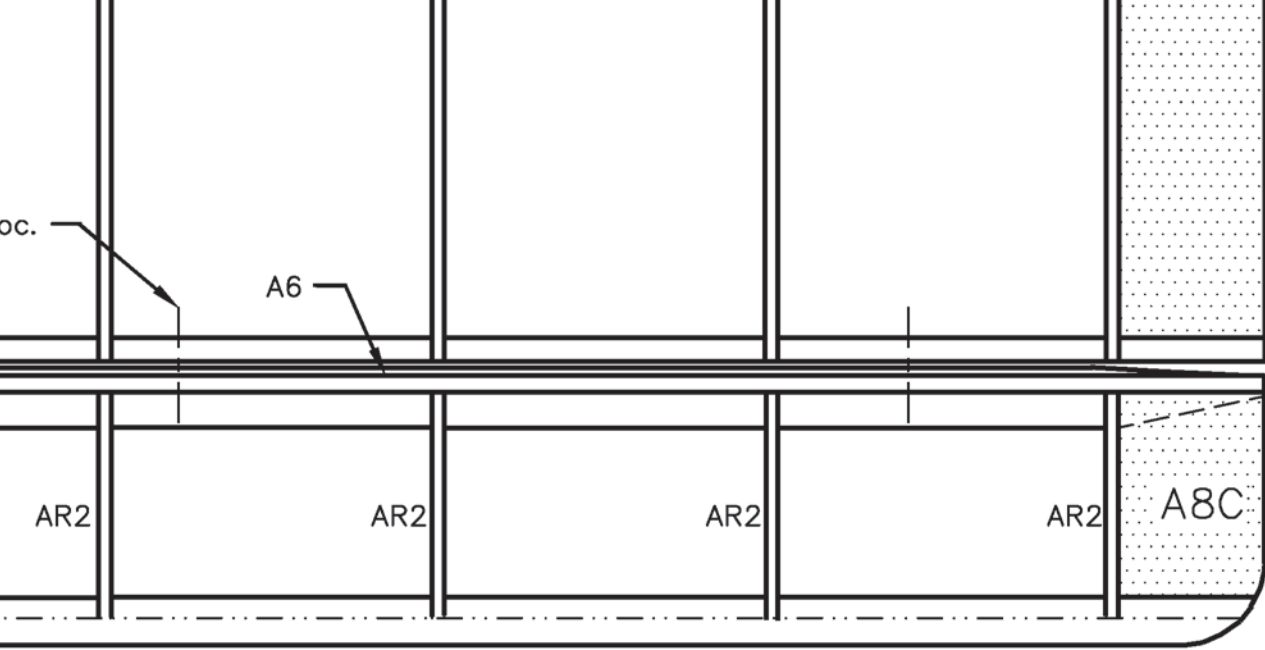




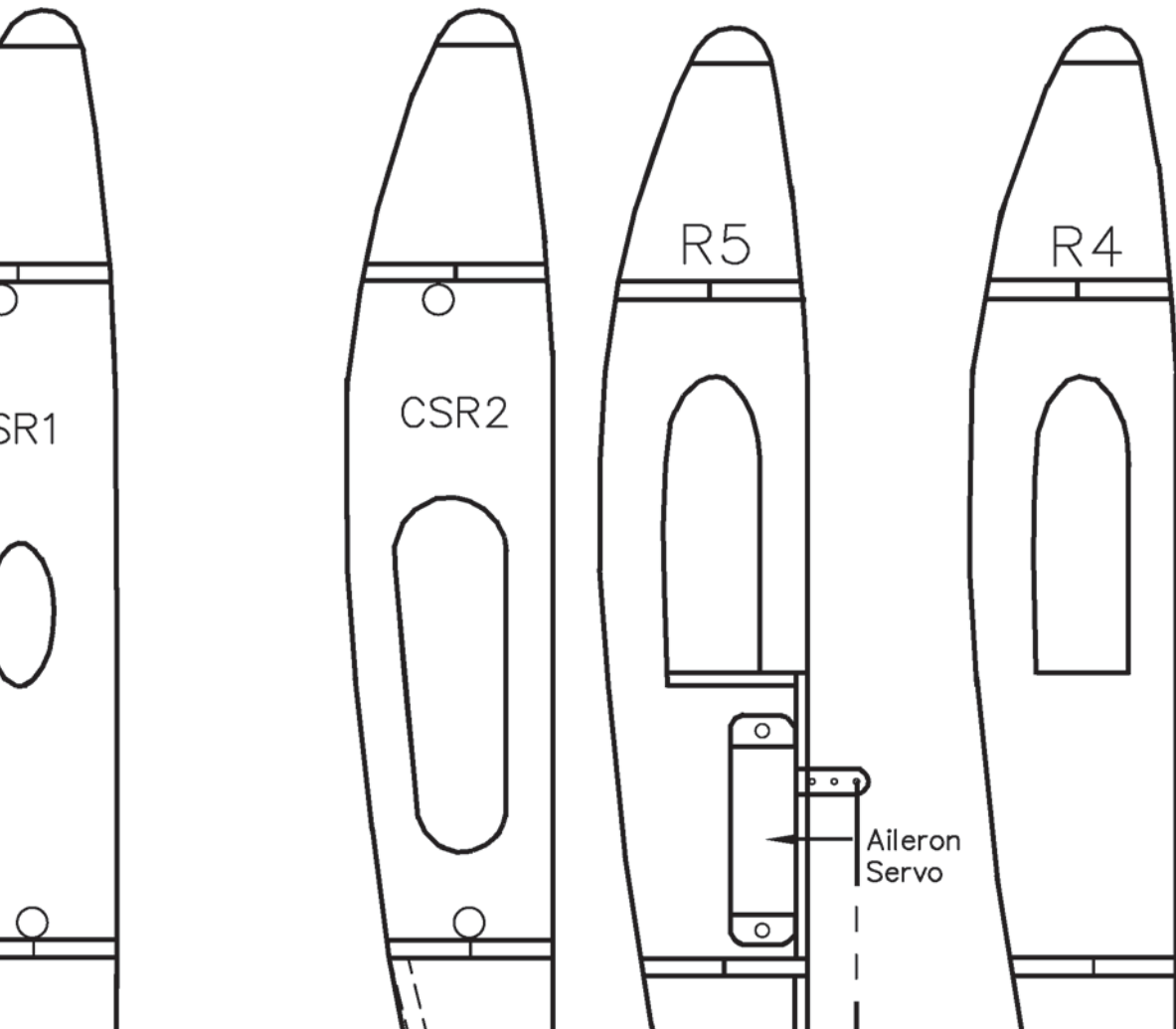
3/32 X 1/4 BALSA

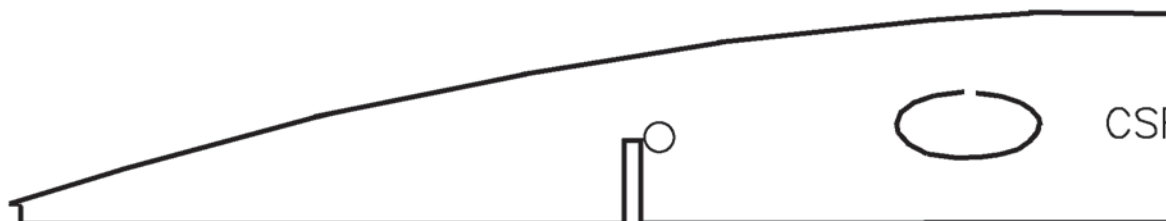
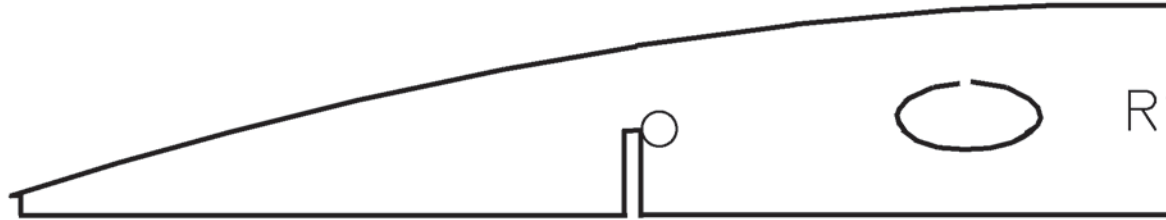
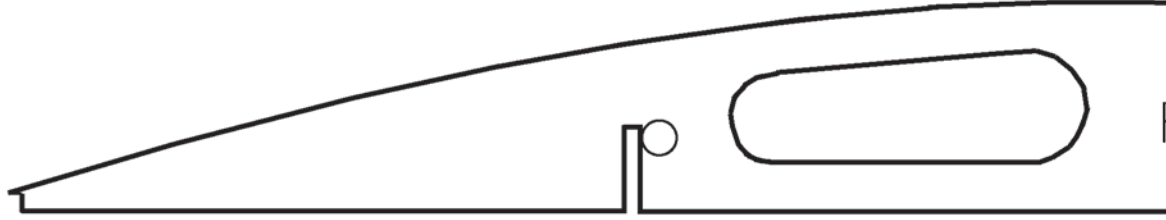
Note: Lash the Retention Tubes Nylon Thread and





Use 1/16 Aluminum Strut
 Attach to the Wings with
 and Secure with Thin Cya

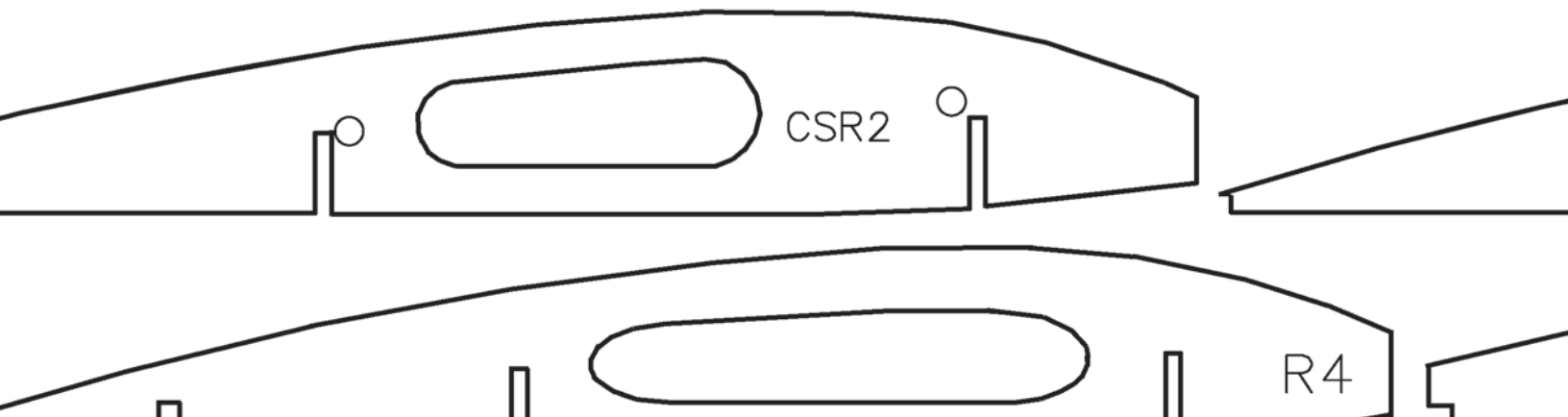
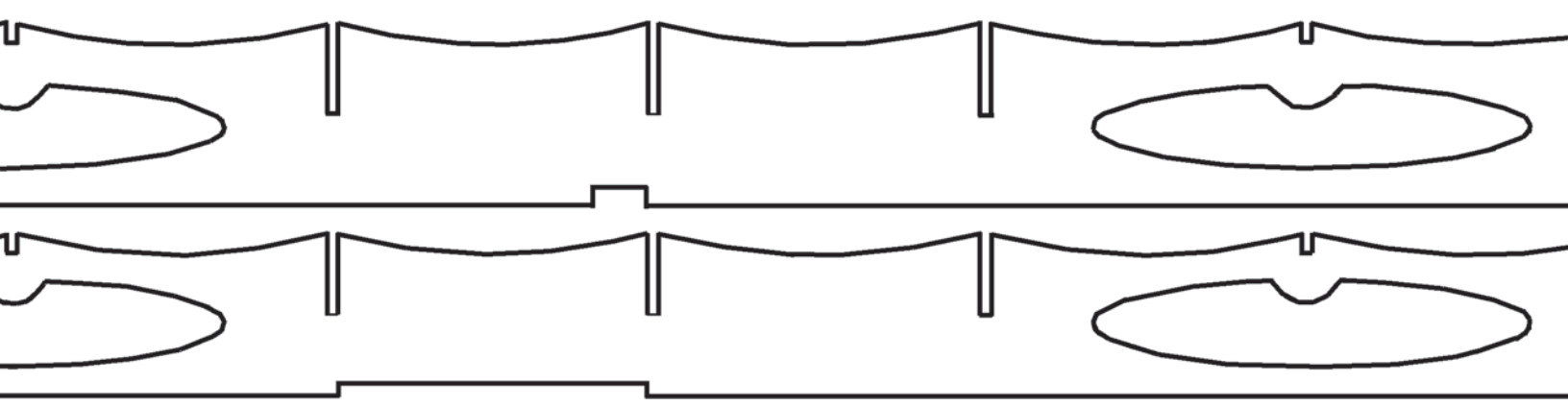
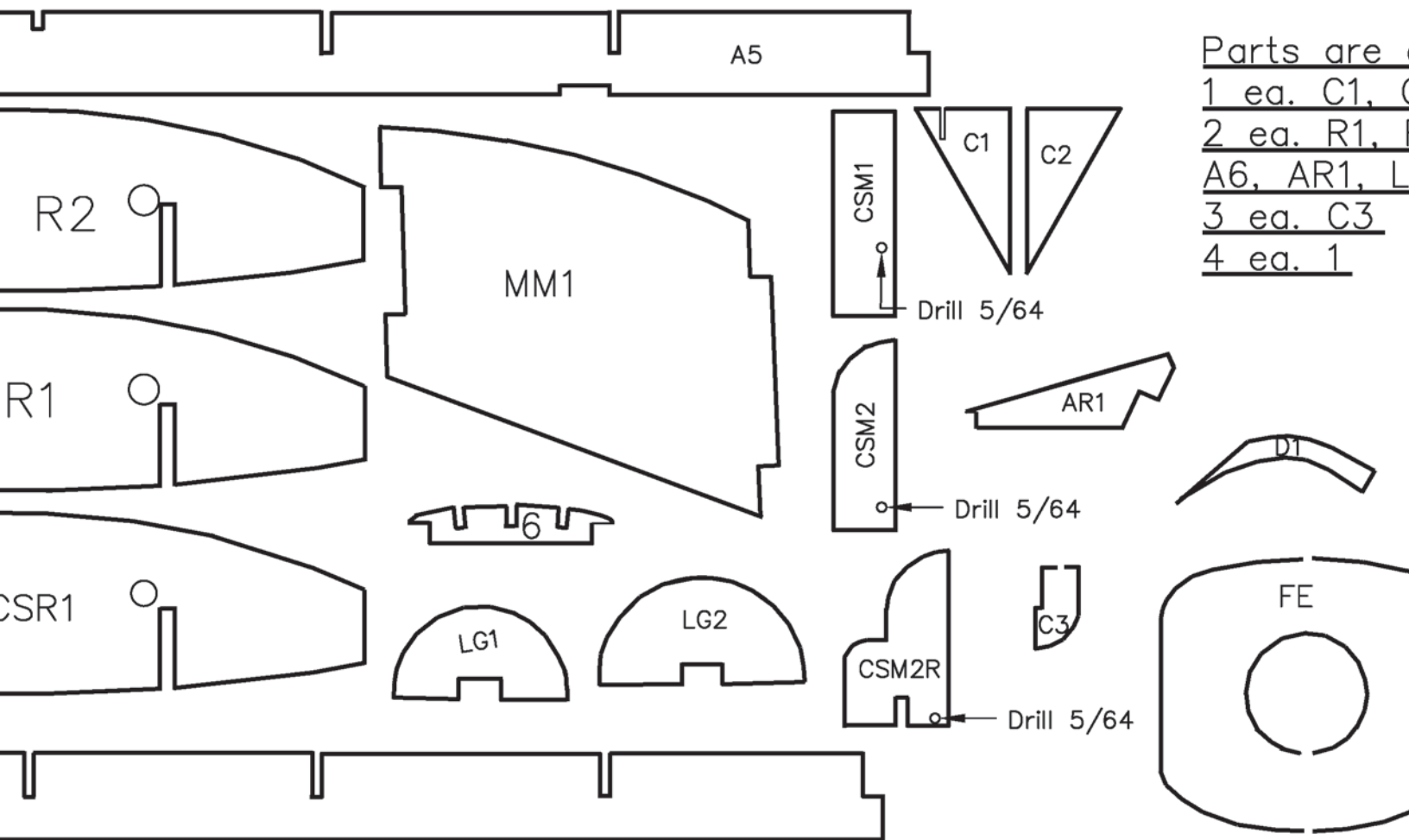




Grain

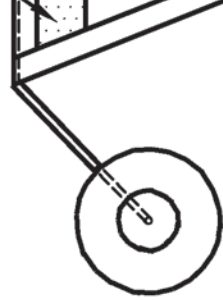
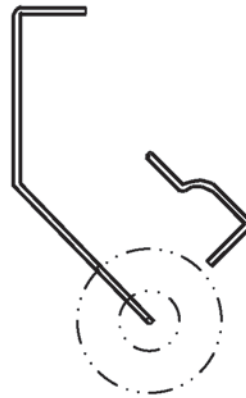
Grain

⋮



Parts are of 1/8" Balsa:

C2, D1, 6, CSM2L, CSM2R
R2, CSR1, MM1, CSM1, A5,
LG1, LG2, FE



Tail Wheel Strut
Make from .032 Steel Wire



CS2



CS1



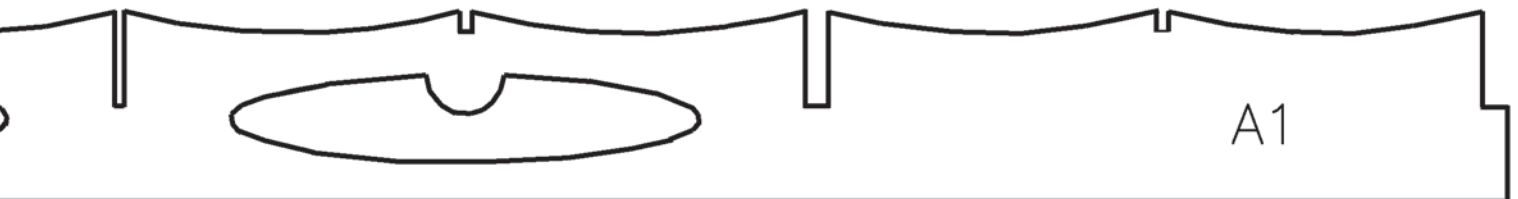
CM1



A7

Drill .035

Parts are of 3/32
1 ea. CS1 & CS2
2 ea. A1, A2, & A7
4 ea. CM1



A1



A2

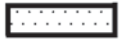


R3



R5

Parts are of 1/8"
1 ea. CRS2, 1, 2, 3, 4, 5, 6, 7, 8, 9, 10, 11, 12
2 ea. A8A, A8B
A9, R3, R3A R4
4 ea. R5, FR2,
6 ea. FR1
12 ea. AR2



Hinge Cutting Pattern
Make from Cya Hinge Stock 13 Req.

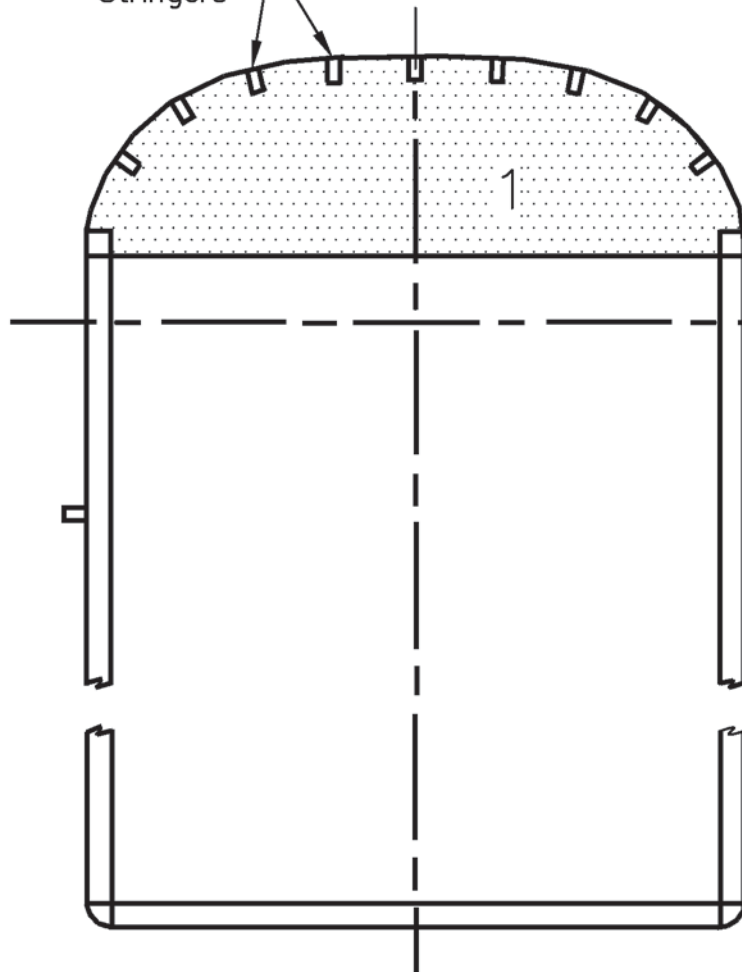
5 4 Plcs

3/32" Balsa:
2
A7

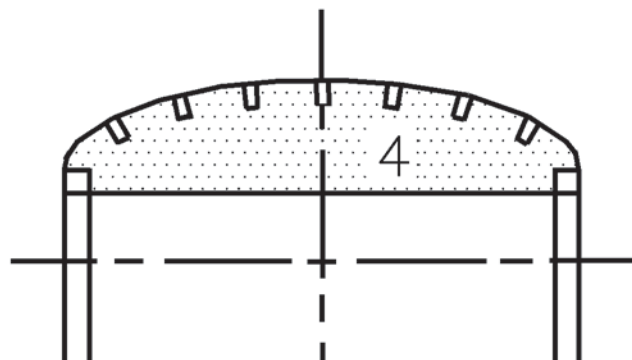
3/32 x 1/4 Bals

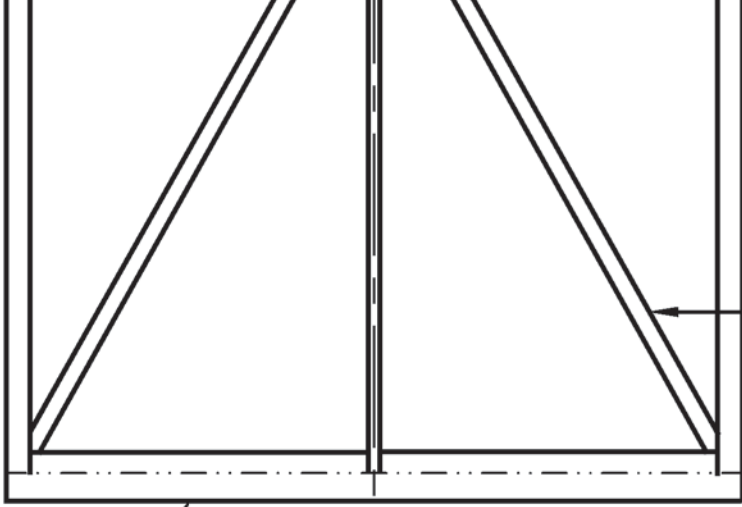
1/16 x 1/8 Balsa
Stringers

CM1/CM2



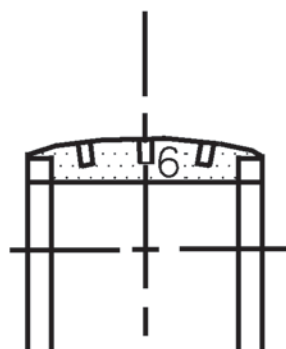
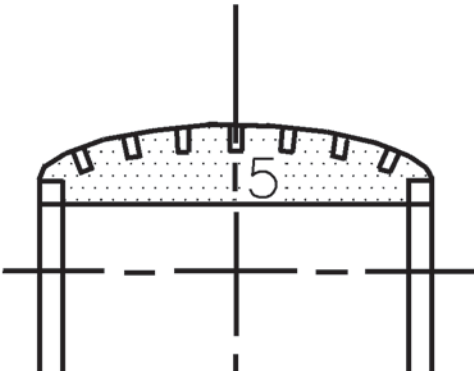
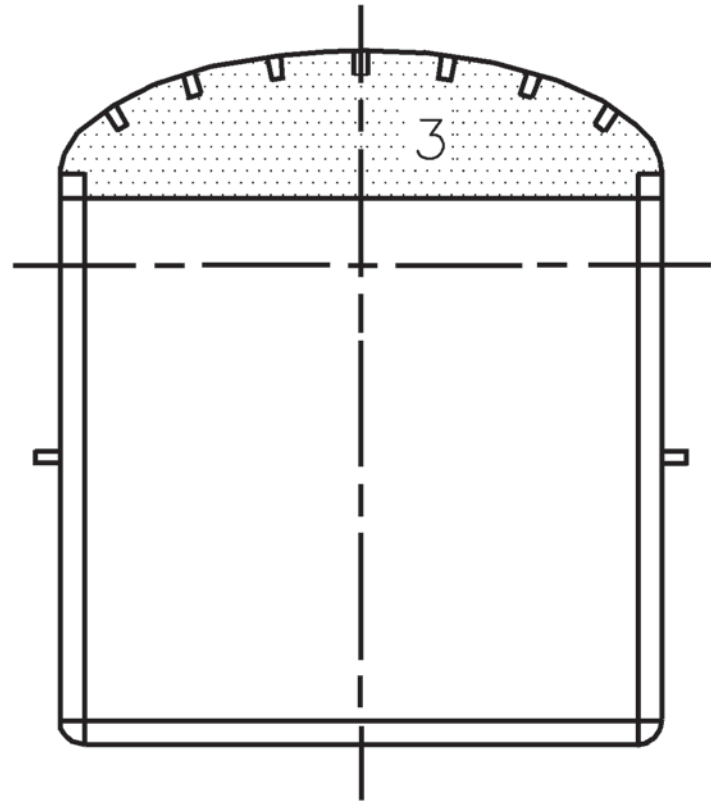
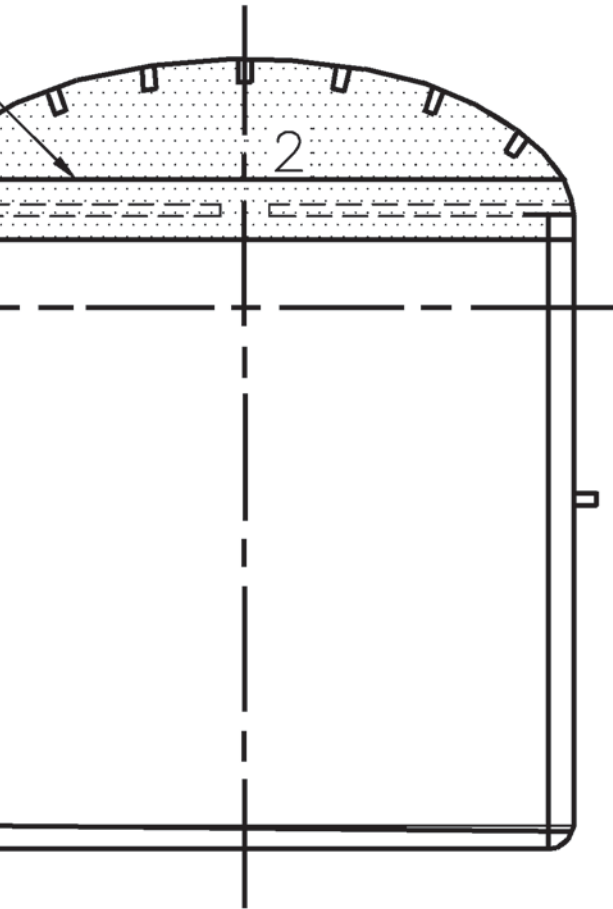
1/16" Balsa:
1, 2, 3, 4, 5, PRG
8B, A8C, A3, A4,
R4, R6, R7, CM2
2, PRS

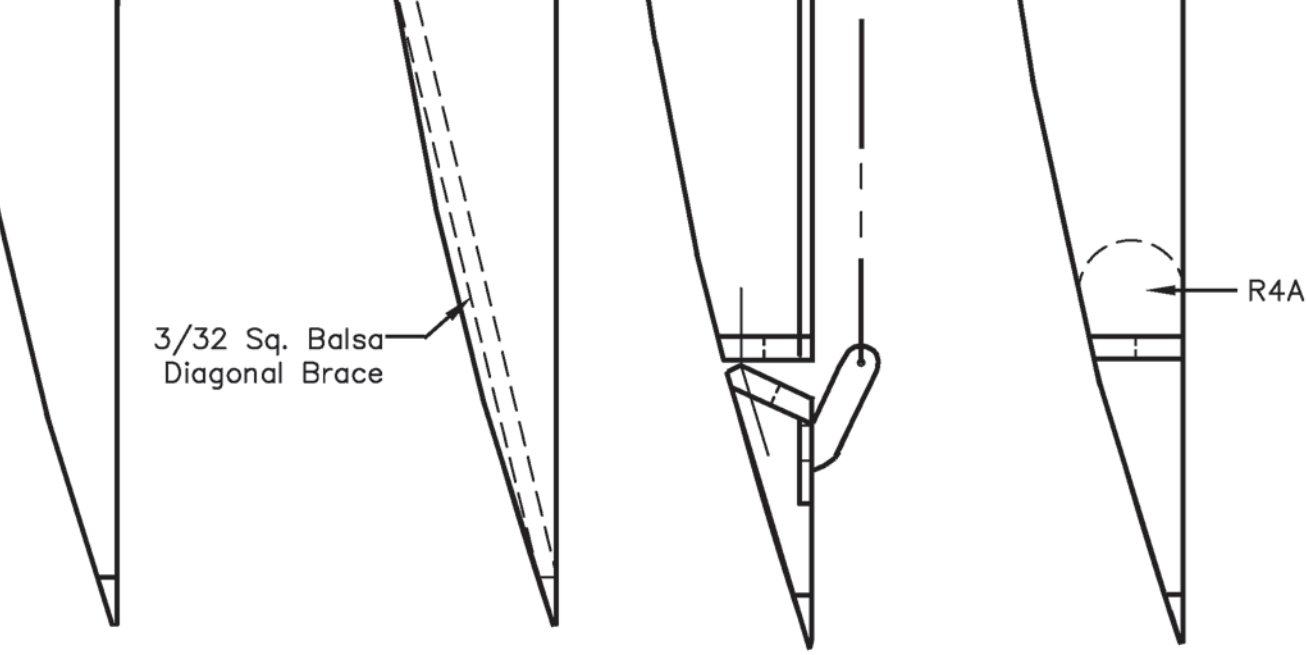




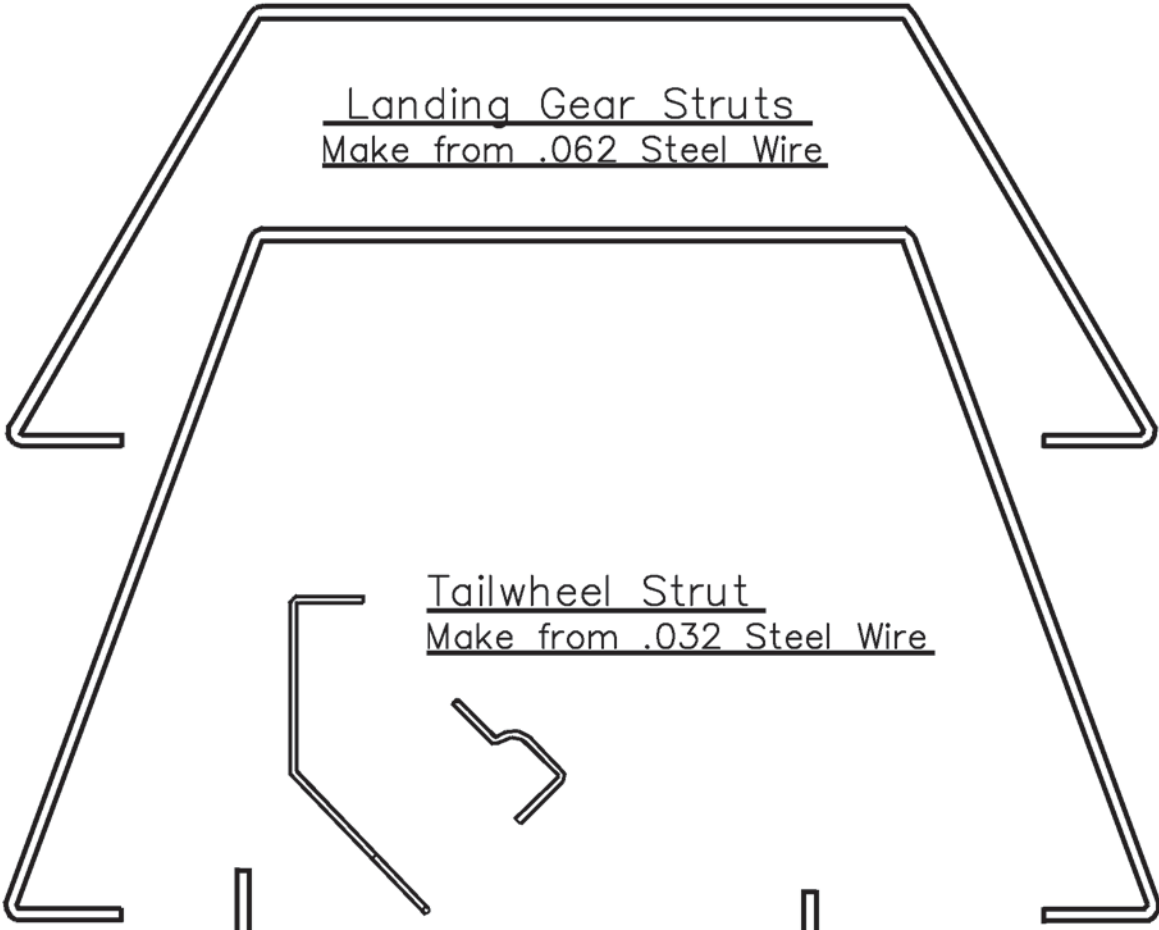
3/32 Sq. Balsa Diagonal Brace.
Glue in Flush with the
Top of A2

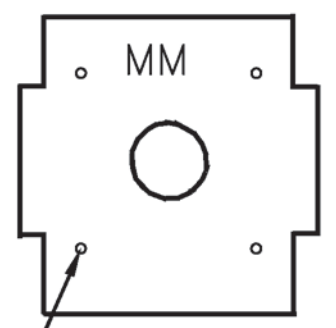
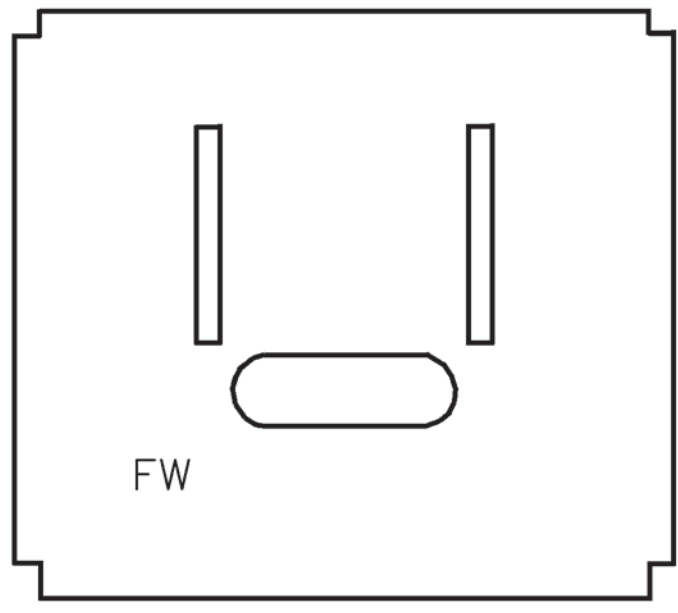
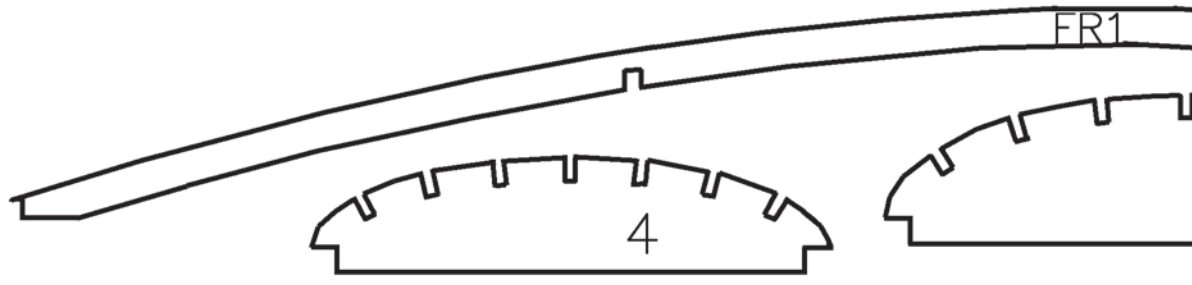
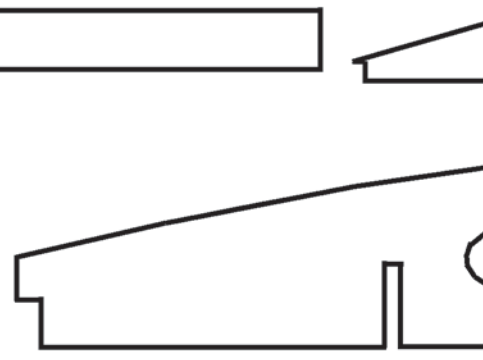
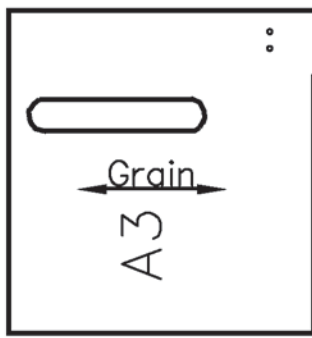
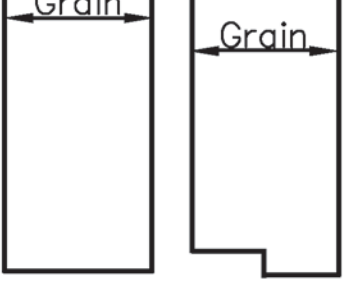
Balsa



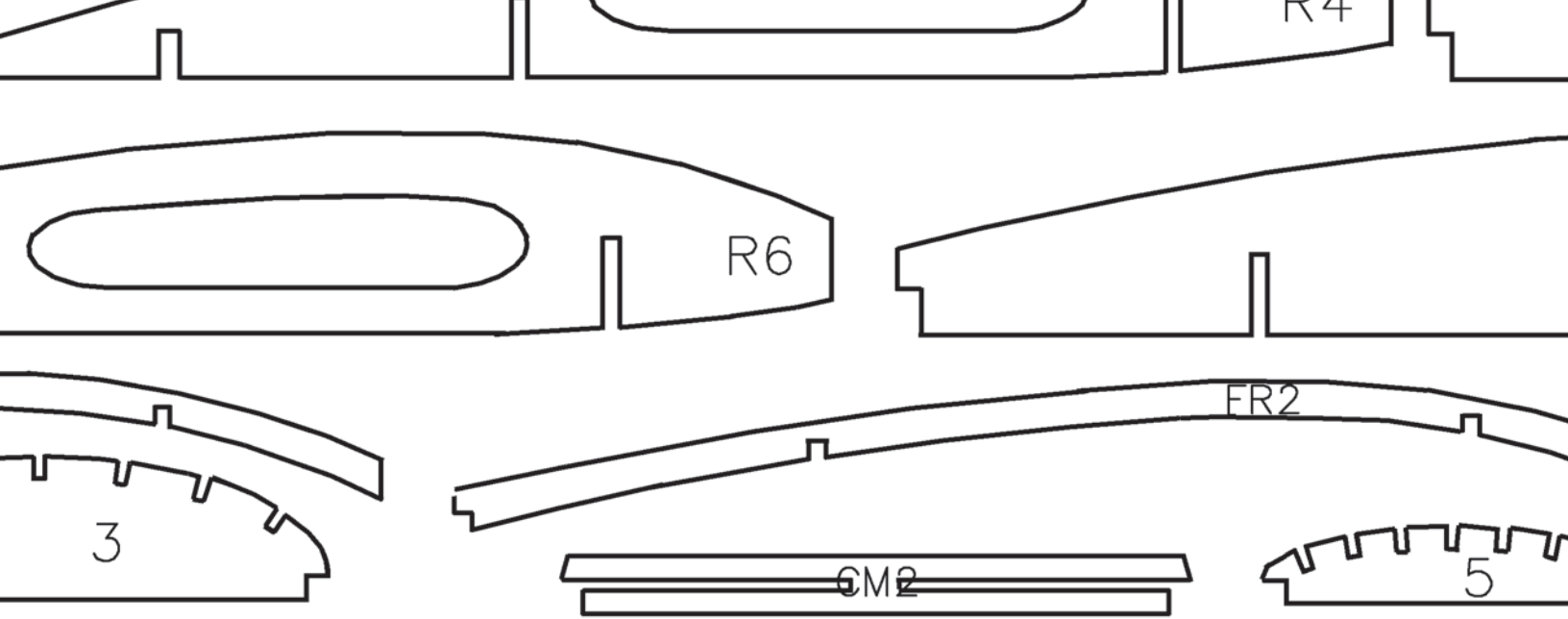


Wing Rib Detail Drawings





Drill 1/16 4 Plcs
1/8" Lite Ply
1 ea. MM, FW



1/32" Ply:

1 ea. Elev, Scale Rud Horn

2 ea. Ail, Scale Elev Horn

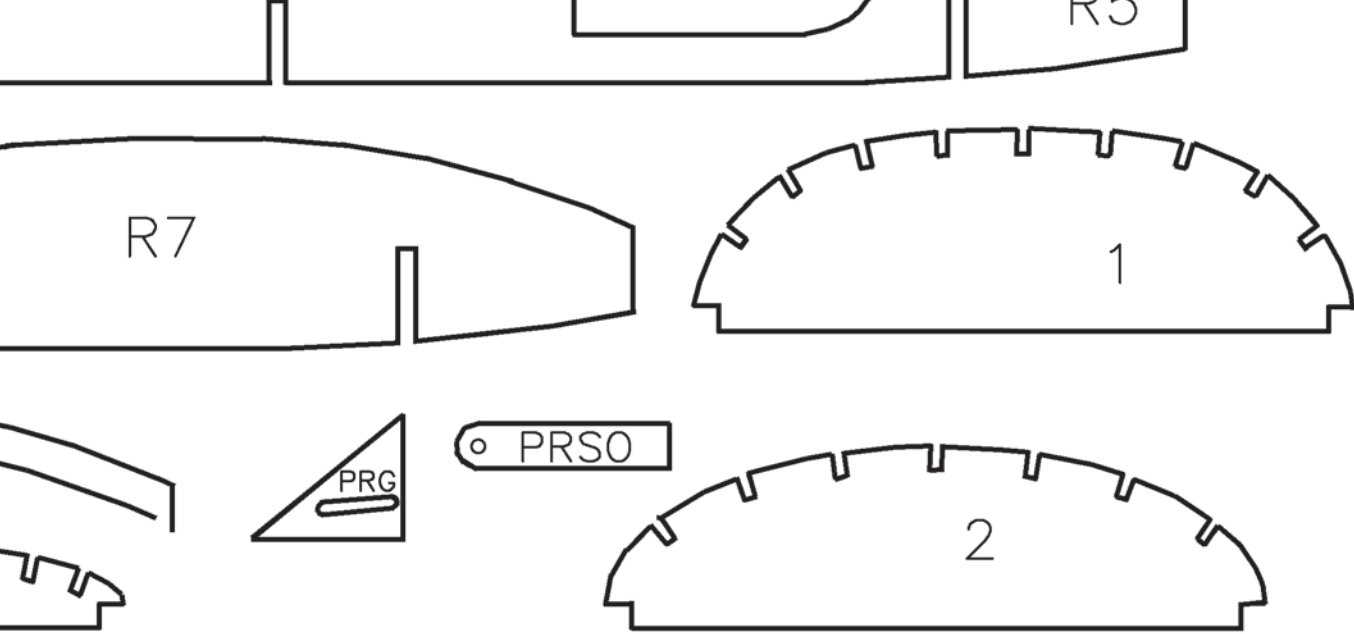
Materials List:

Power and Guidance:

- 1- Suppo 2208/17T Outrunner
- 1- 12 Amp ESC
- 1- GWS 9-6DD Propeller
- 1- 1320 mah 2S Lipoly Battery
- 4- 6 Gram Sub-Micro Servos
- 2- 9" Servo Extentions
- 1- 11" Servo Y-Lead
- 1- Full Range 4 ch. Rx

Wood

- 9- 1/8"
- 1- 1/4"
- 1- 1/2"
- 1- 3/4"
- 2- 3/8"
- 9- 1/8"
- 1- 1/4"
- 4- 3/8"

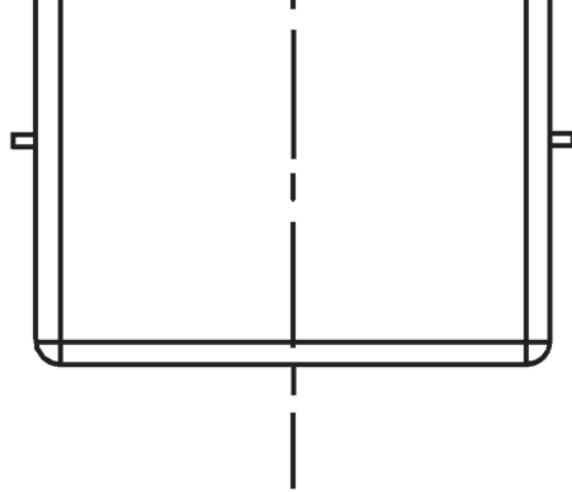


- od:
- 1/16 x 1/8 x 36 Balsa
 - 1/16 x 3/16 x 36 Balsa
 - 1/16 x 3/8 x 36 Balsa
 - 3/32 Sq. x 36 Balsa
 - 3/32 x 1/4 x 36 Balsa
 - 1/8 Sq. x 36 Balsa
 - 1/8 x 1/4 x 36 Balsa
 - 3/16 x 3/8 x 36 Balsa

- If the Laser Cut Wood Pack is Not Used:
- 2- 1/16 x 4 x 36 Balsa Sheet
 - 2- 3/32 x 4 x 36 Balsa Sheet
 - 1- 1/8 x 4 x 36 Balsa Sheet
 - 1- 1/8 x 4 x 6 Lite Ply
 - 1- 1/32 x 2 x 4 Ply

- Miscellaneous:
- 1 Pr.- 3" Spokked Main
 - 1- 3/4" Tail Wheel
 - 1- .032 I. D. x 14" Plc
 - 10 Ft. Heavy Duty Nylon
 - Blue Foam Block (Engin
 - Window Screen (Radiato
 - 1- Manila File Folder
 - 1- .008" x 2" x 4" Ac

Note: A Laser Cut Wood Pack Available from Manzano Laser Works at www.manzanolaser.com



Plain Wheels

Plastic Tube
Nylon Carpet Thread
(Engine & Radiator)
(Radiator)

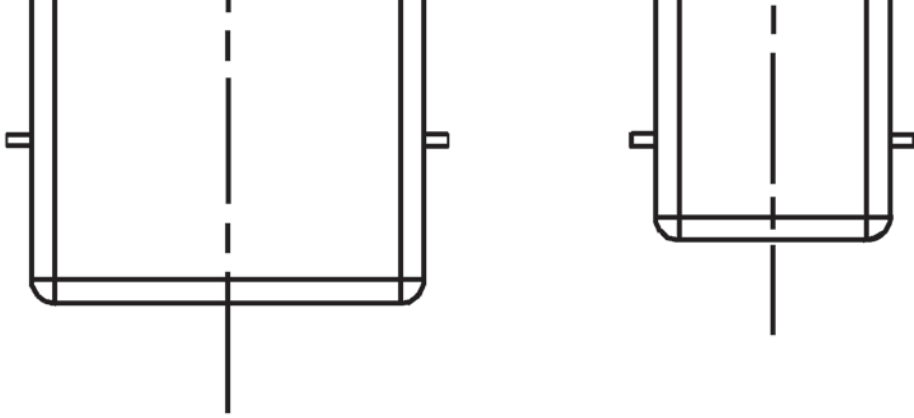
Acetate



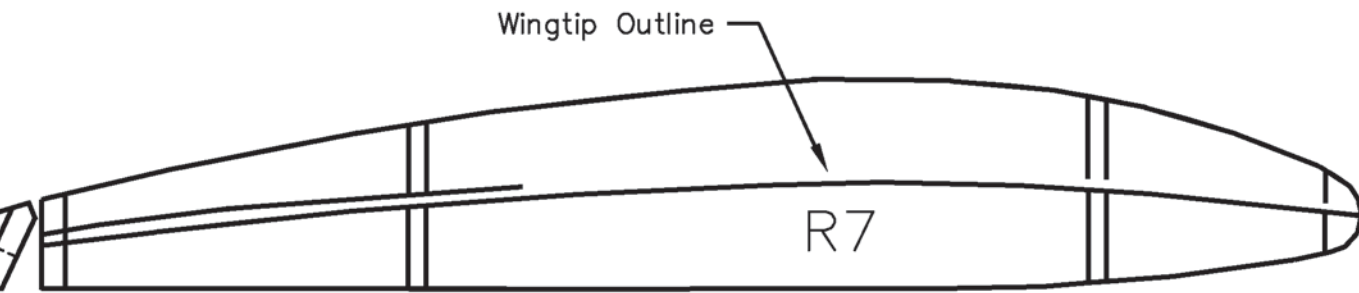
Metal:

- 1- .025 x 18 Steel Wire
- 1- .032 x 24 Steel Wire
- 1- .062 x 36 Steel Wire
- 1- 1/16 O. D. x 6 Aluminum Tube
- 1- 5/32 O. D. x 24 Brass Tube
- 1- 3/16 O. D. x 18 Aluminum Tube





Front Cabane
Make from .062
Wire 2 Req.



R7 Rib Detail Drawing

Copyright 2017  and 
AMA
ACADEMY OF
MODEL AERONAUTICS
Bringing Modelers Together

Copying for resale of this drawing
without the written approval or consent
of the copyright holder is expressly prohibited

ne Strut
.062 Steel

Rear Cabane Strut
Make from .062 Steel
Wire 2 Req.

Pietenpol Aircamper

Span: 48" Len.: 30.25"

Wing Area: 400 Sq. Inches

Flying Weight: 14.7 oz.

Wing Loading: 5.3 oz./ Sq. Ft.

Des. by: Pat Tritle for Model Aviation
Magazine 3-20-2017 Sht. 2 of 2

Plan No. 1103

Model Aviation
Flying without
consent of AMA
is illegal.