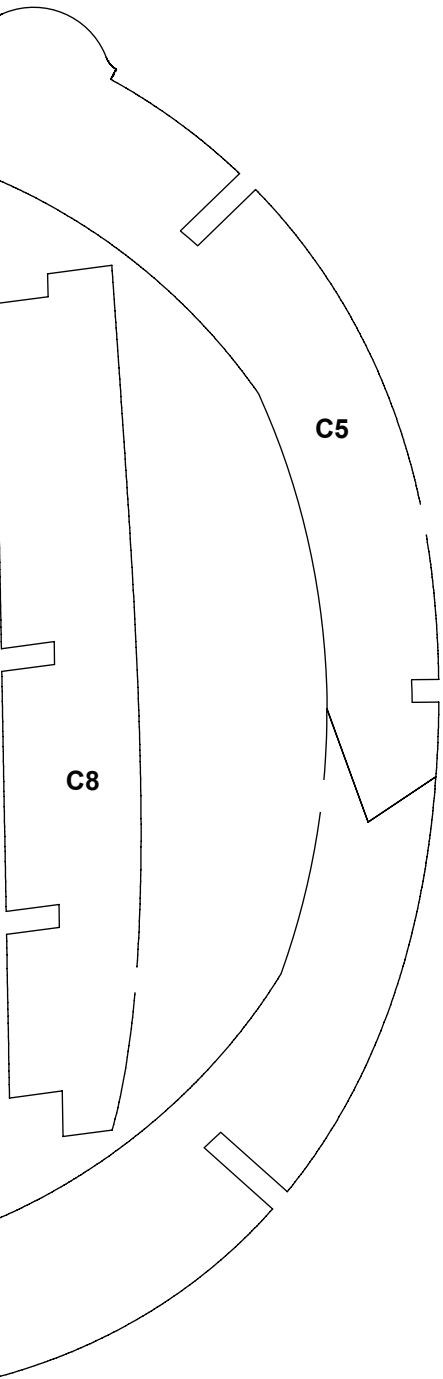


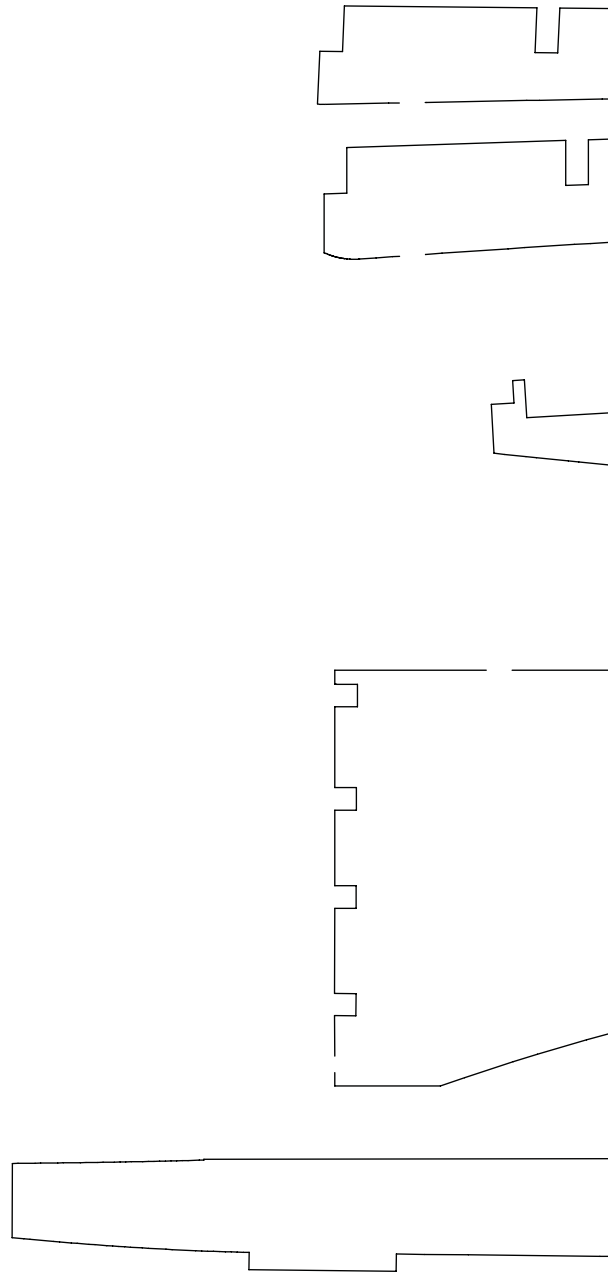
**NOTE ON ALL PARTS WITH CENTERLINES: ONE SIDE SHOWN
MAKE A LEFT AND RIGHT SIDE FOR EACH OF THESE PARTS**

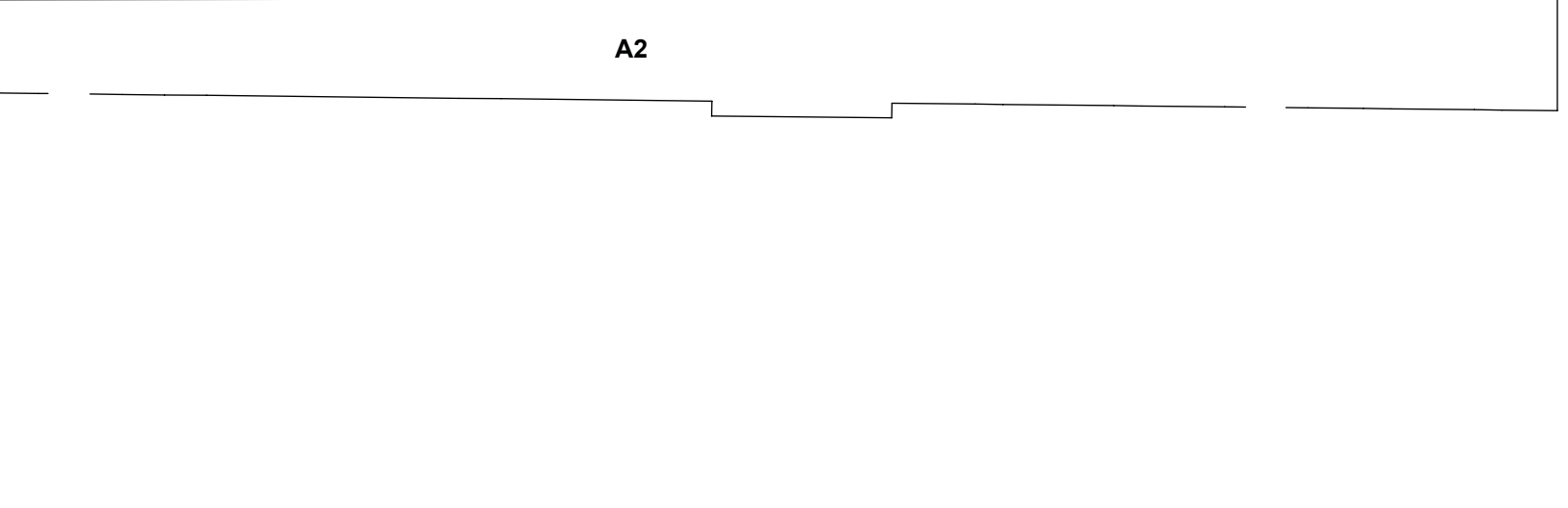
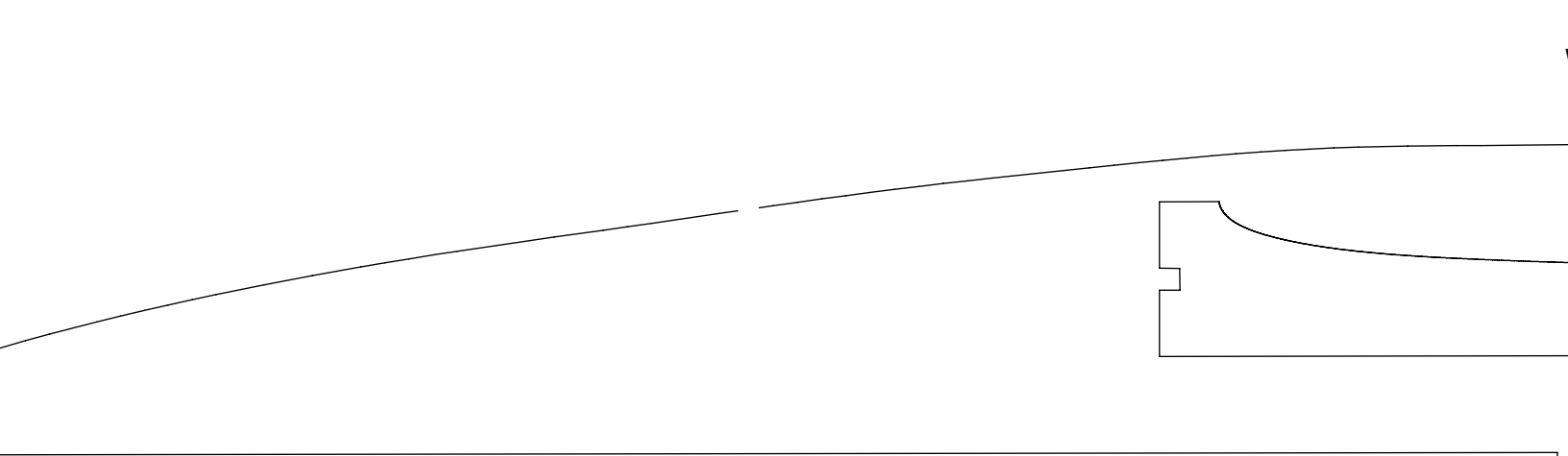
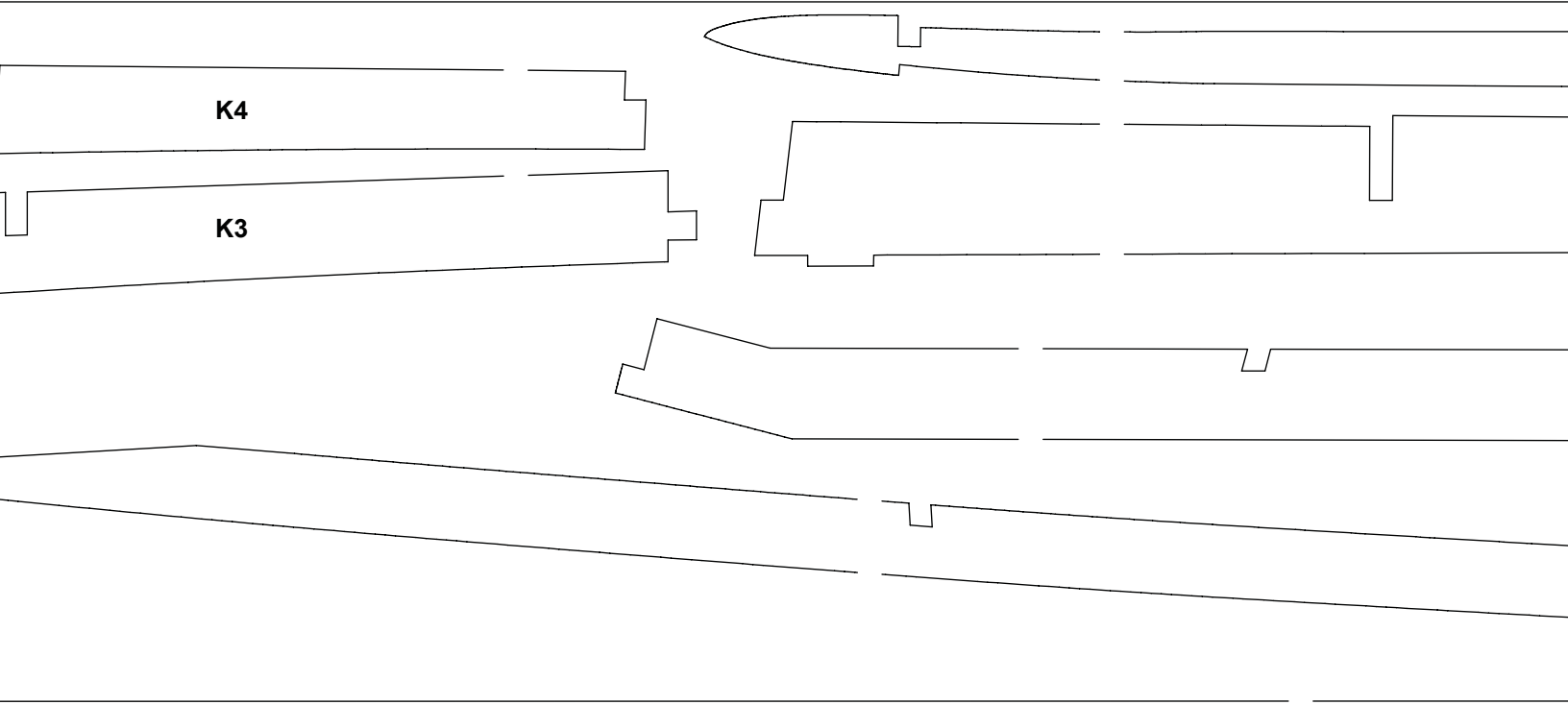


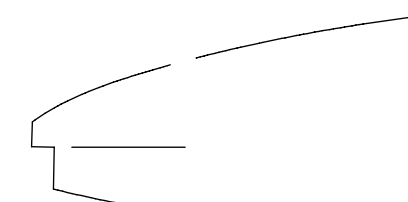
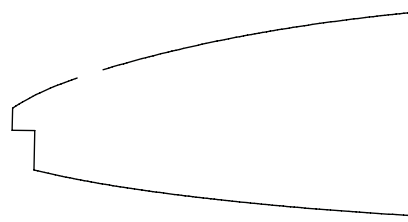
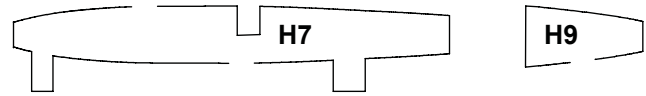
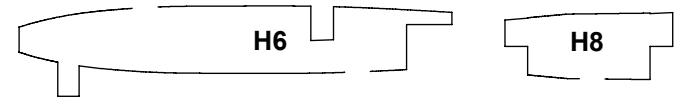
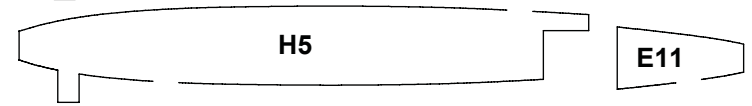
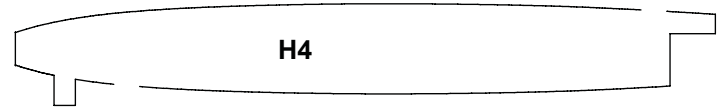
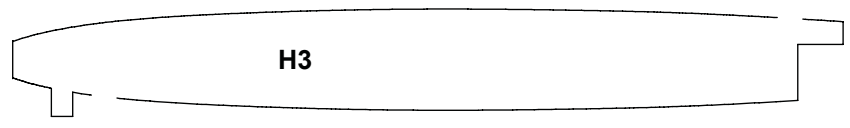
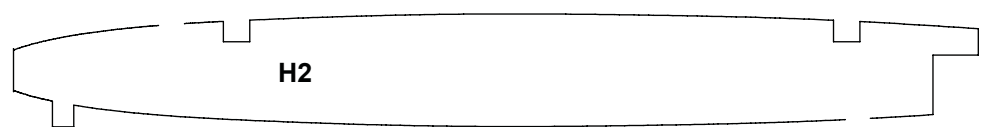
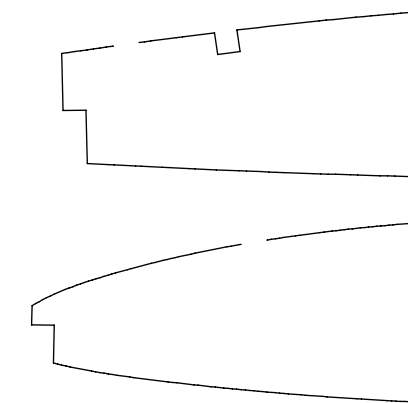
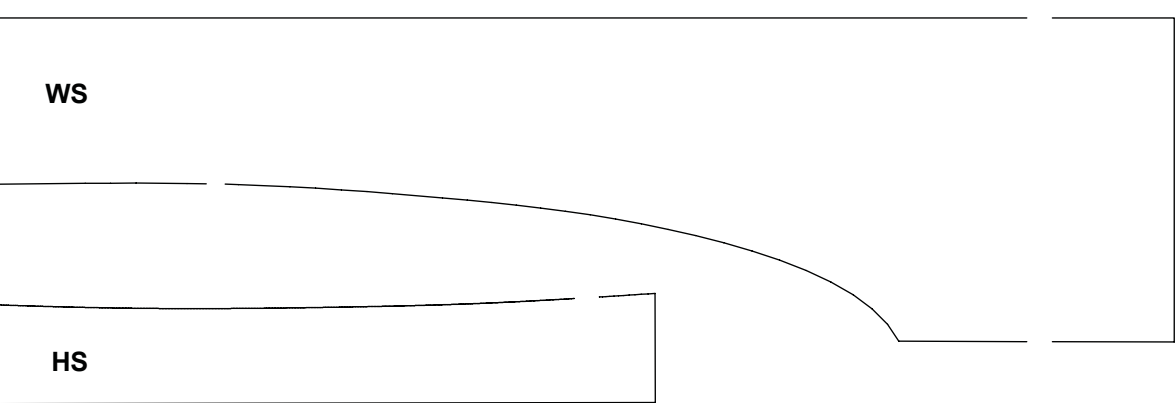
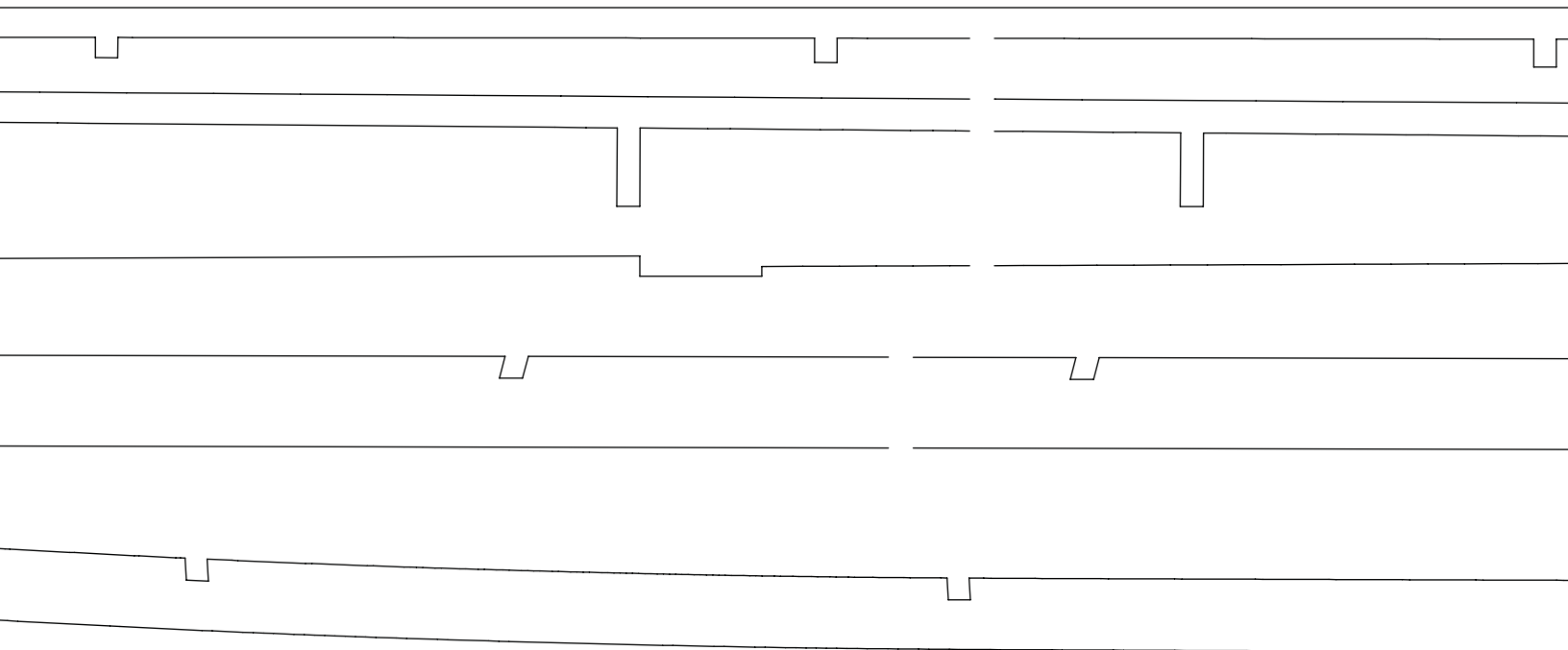
C5

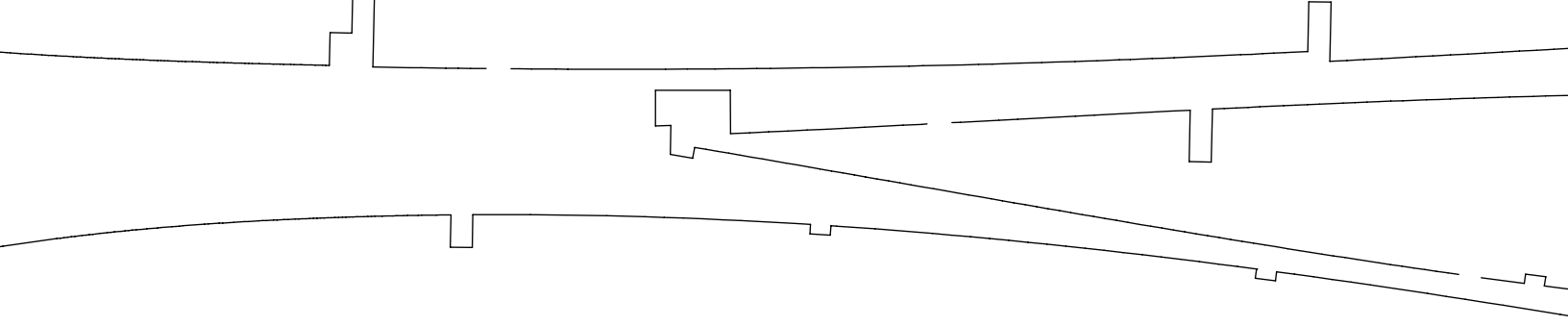
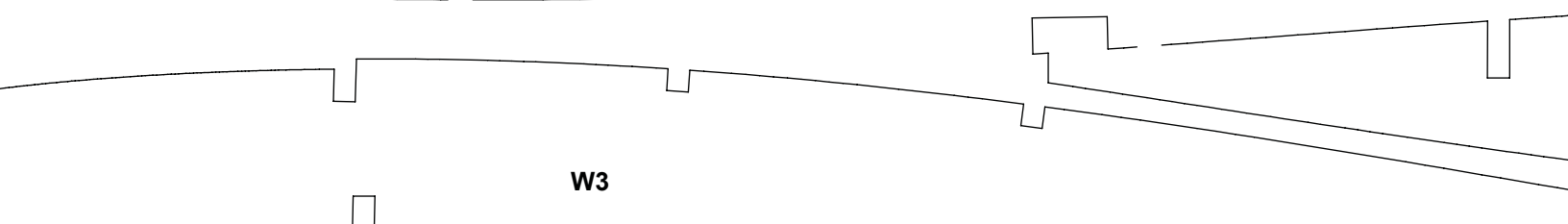
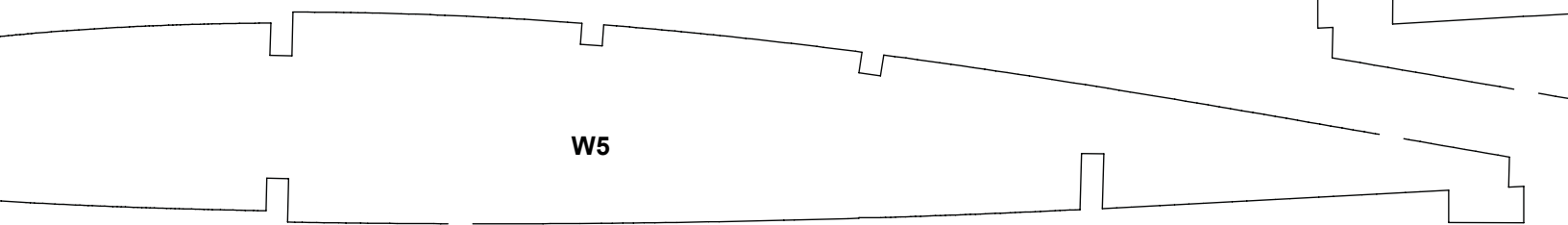
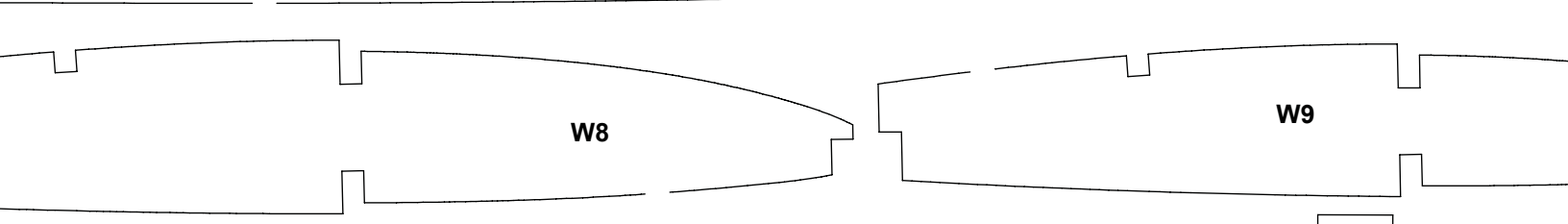
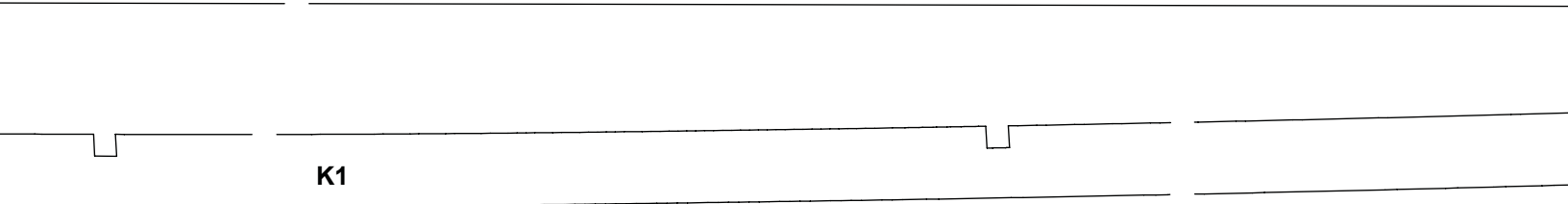
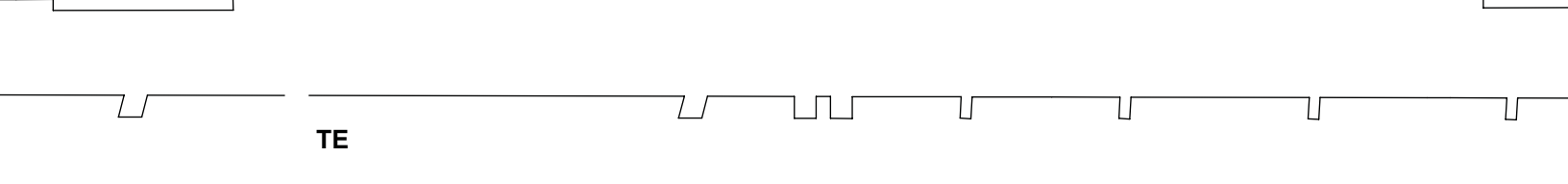
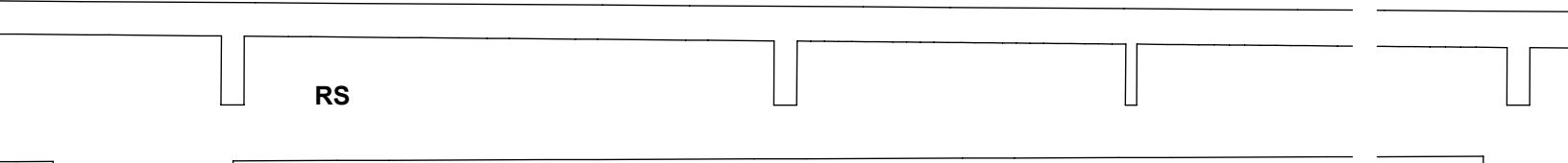
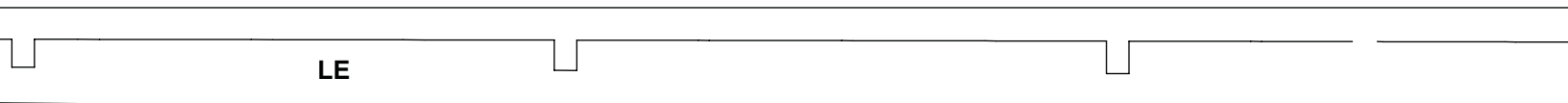
C8

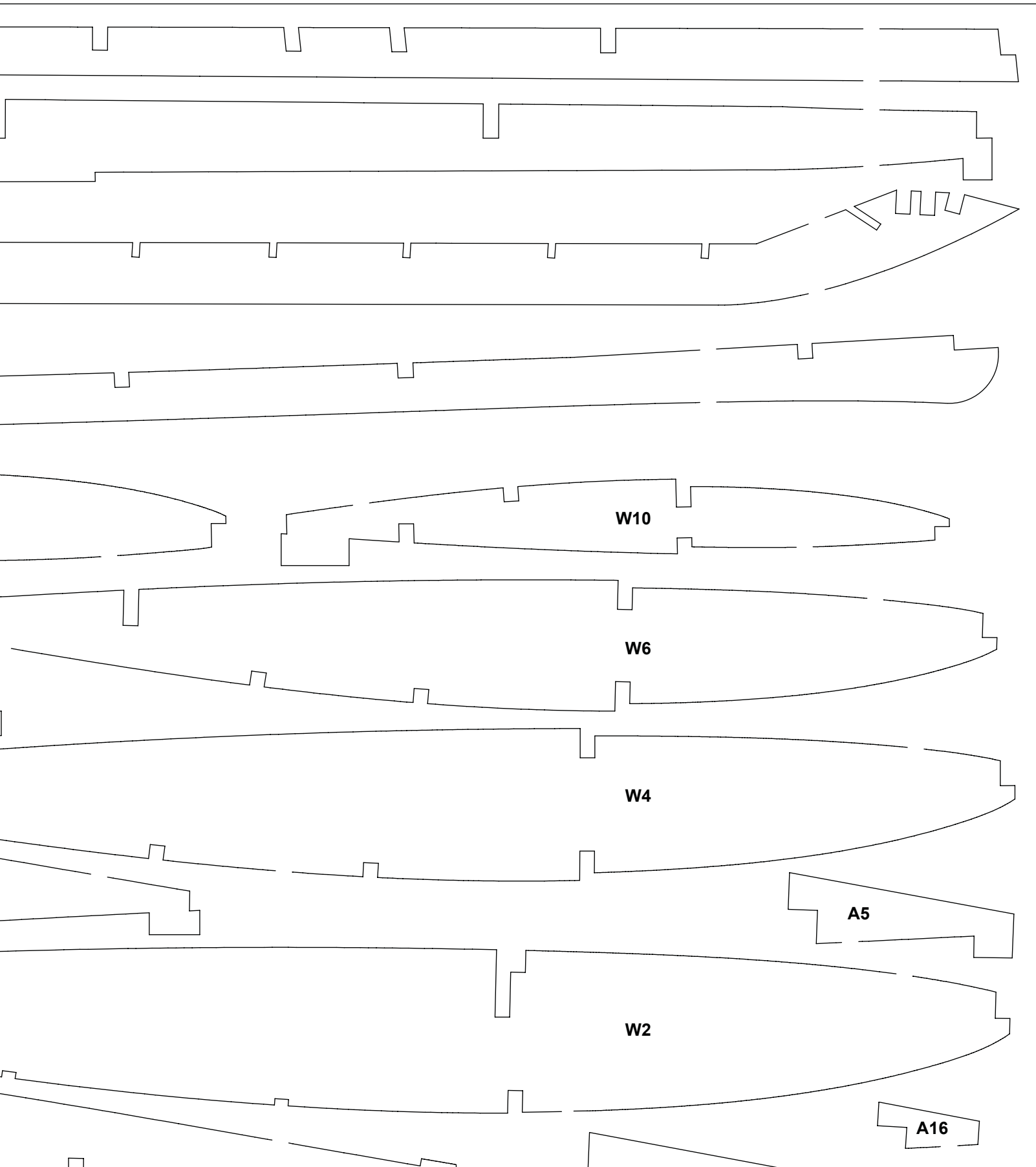
IN FOR ECONOMY OF SPACE
TS

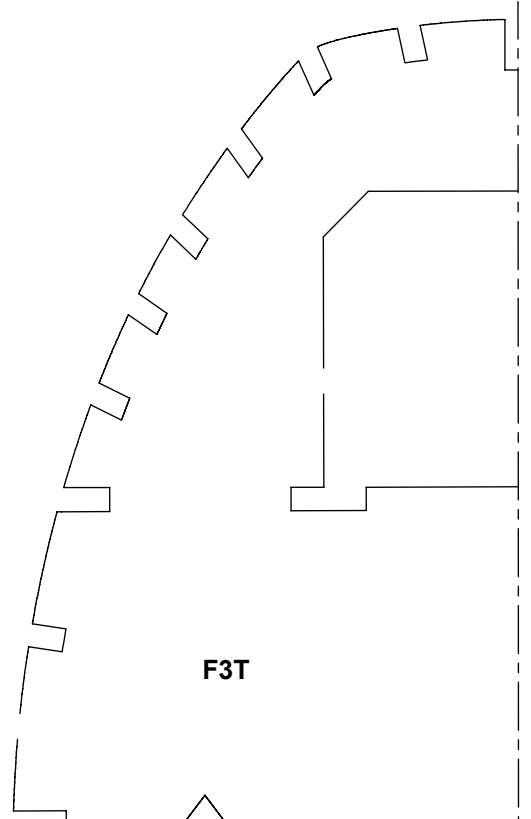
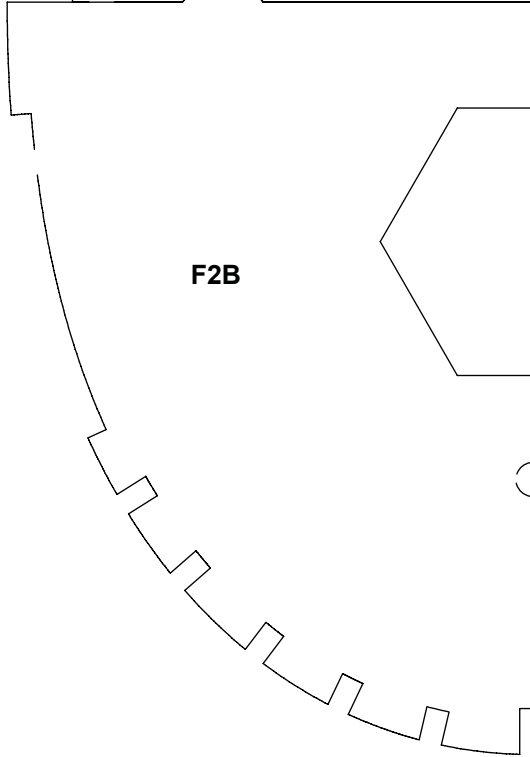
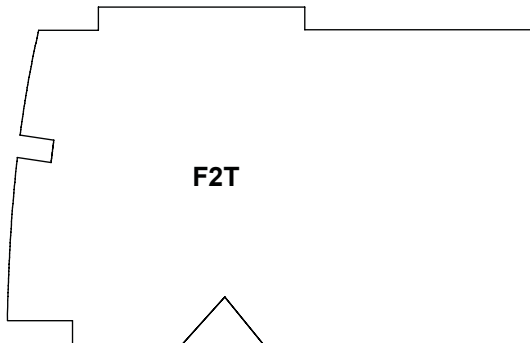
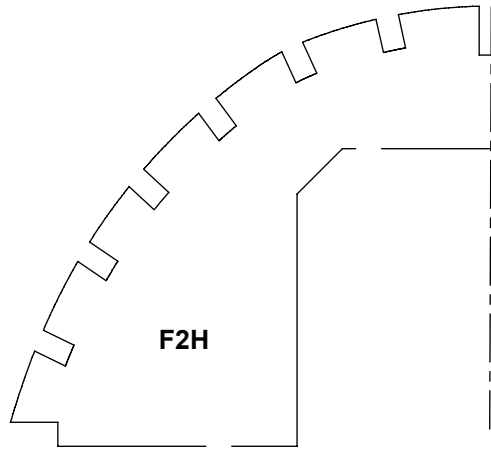
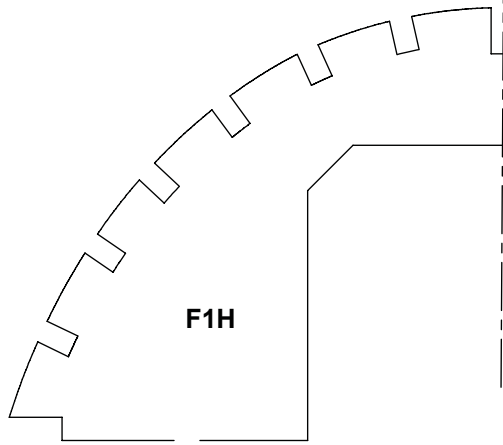


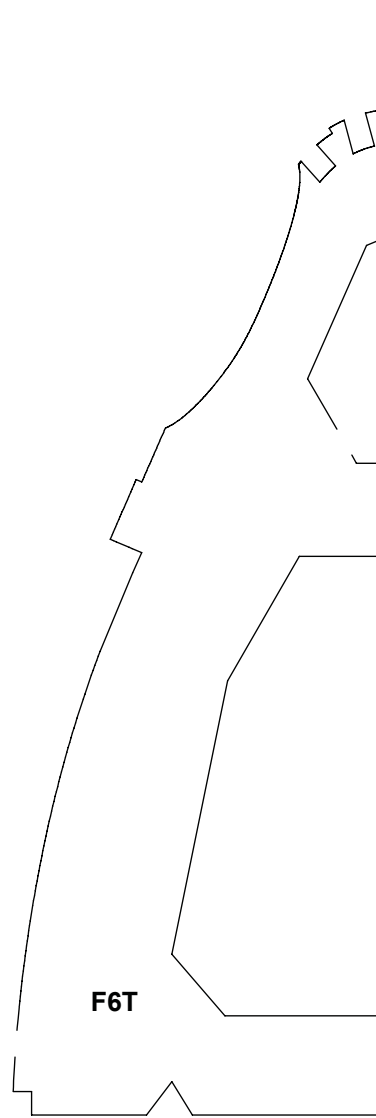
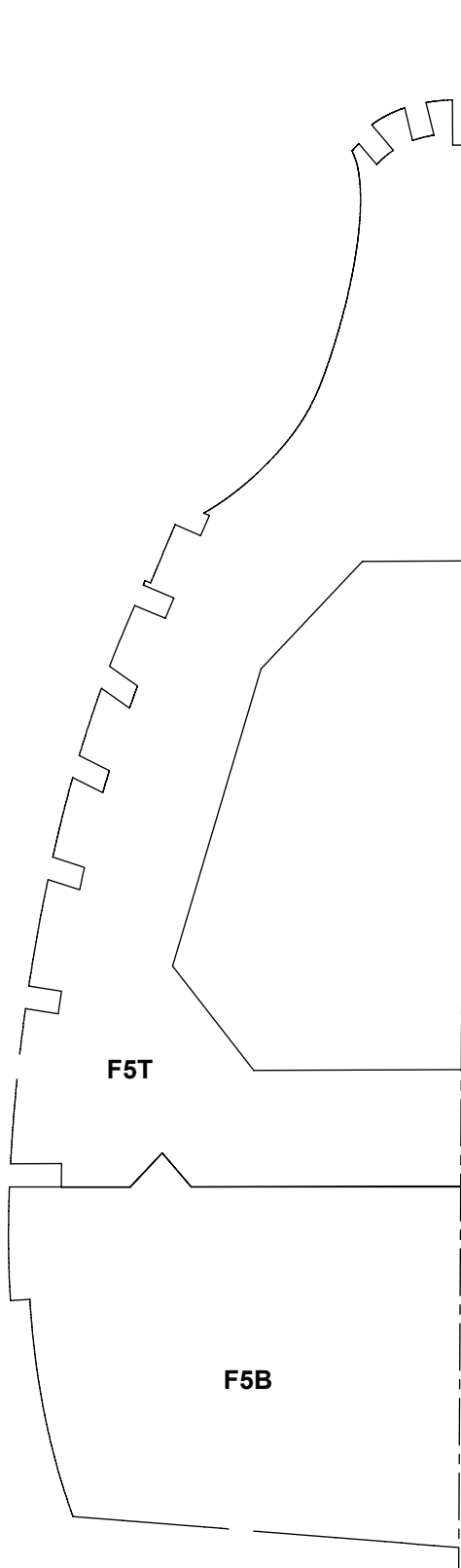
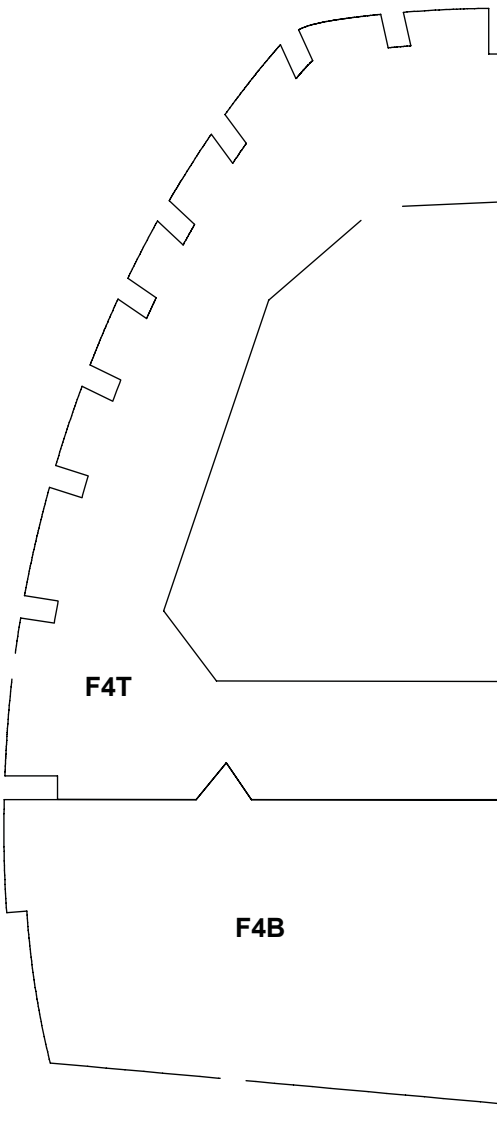
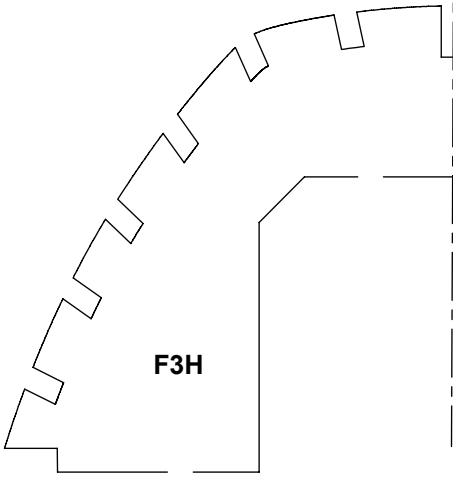


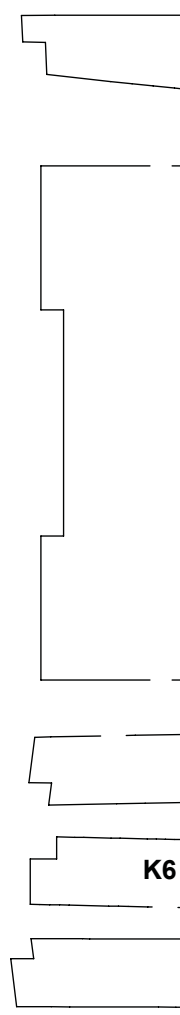
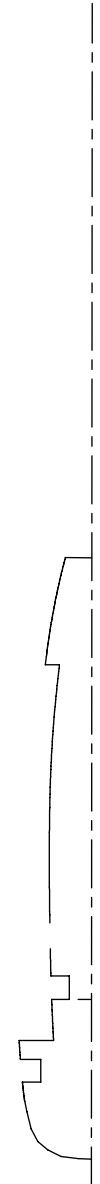
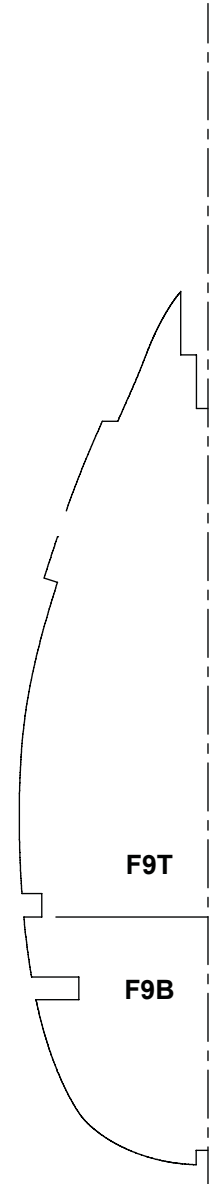
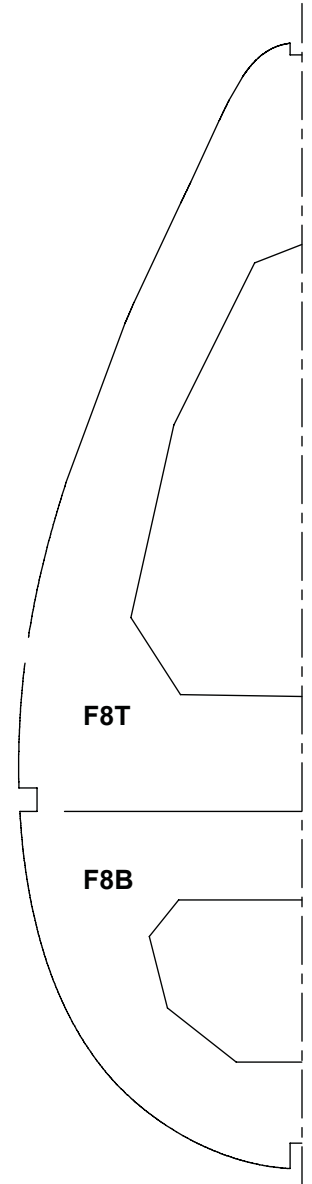
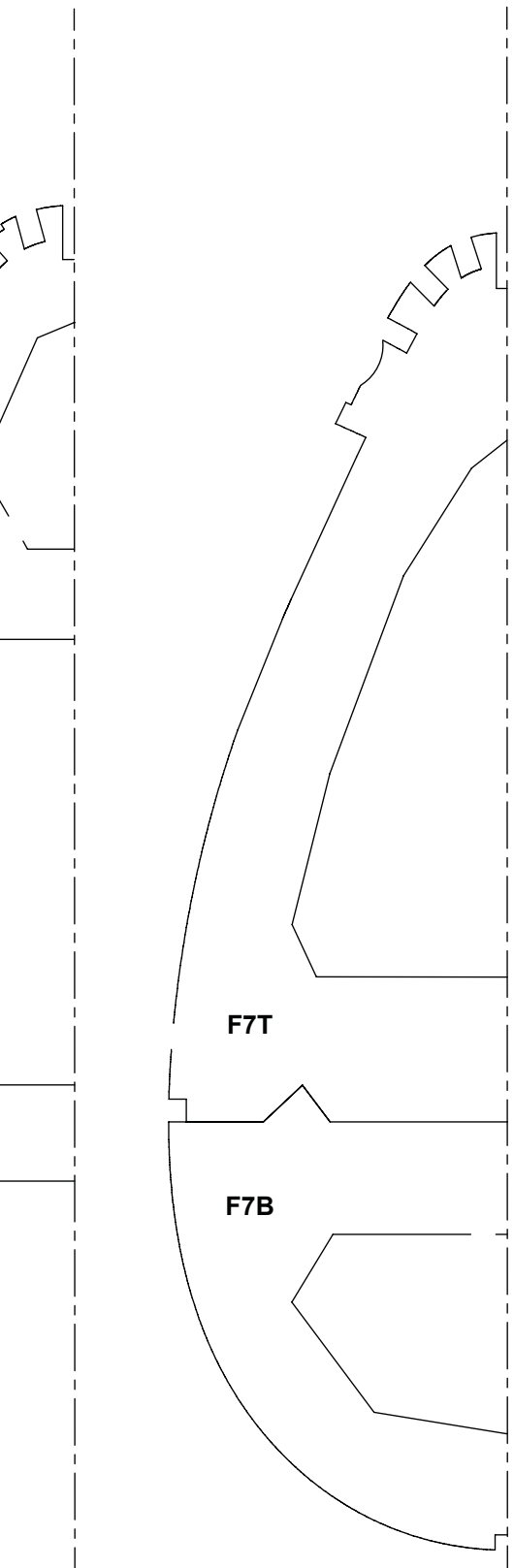






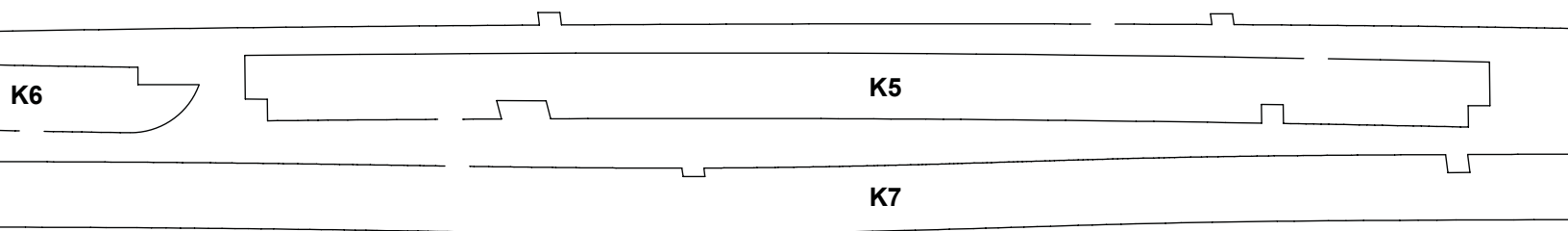
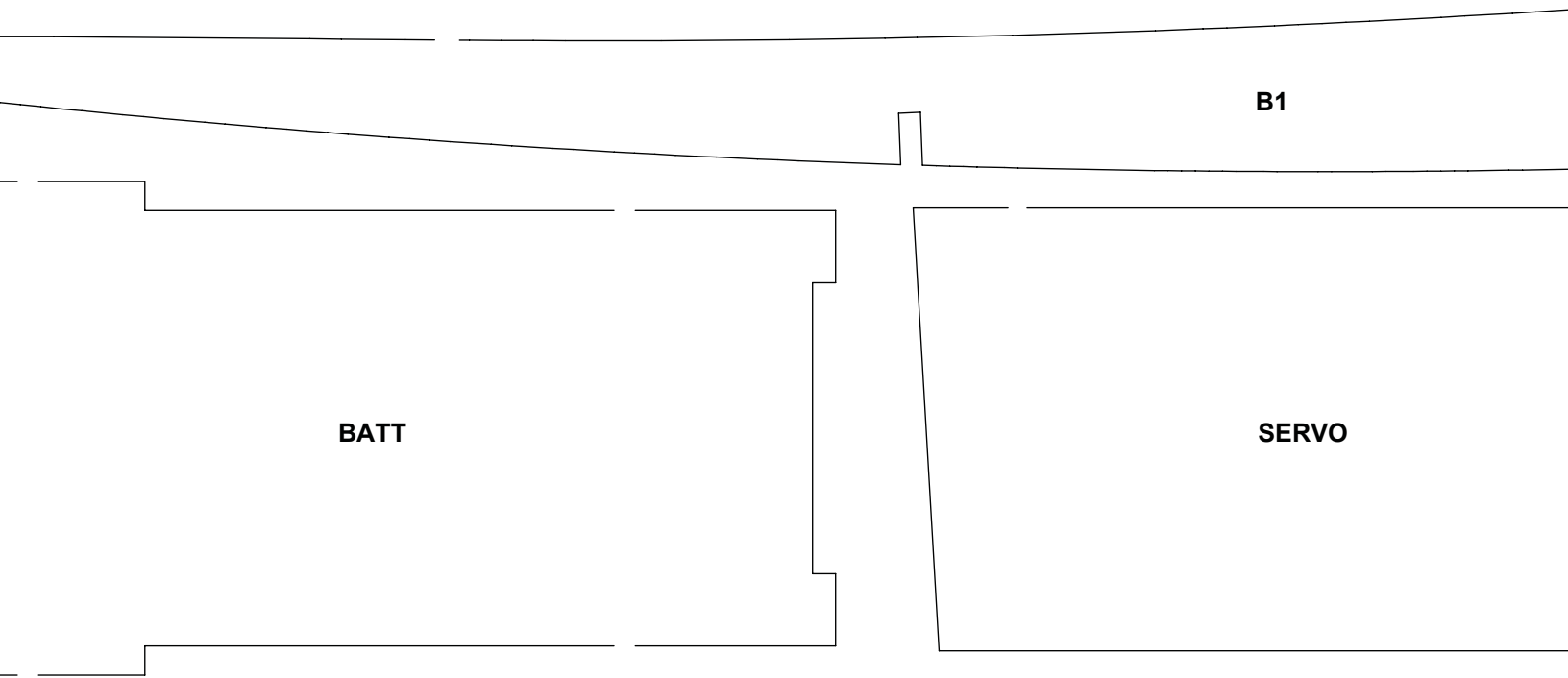






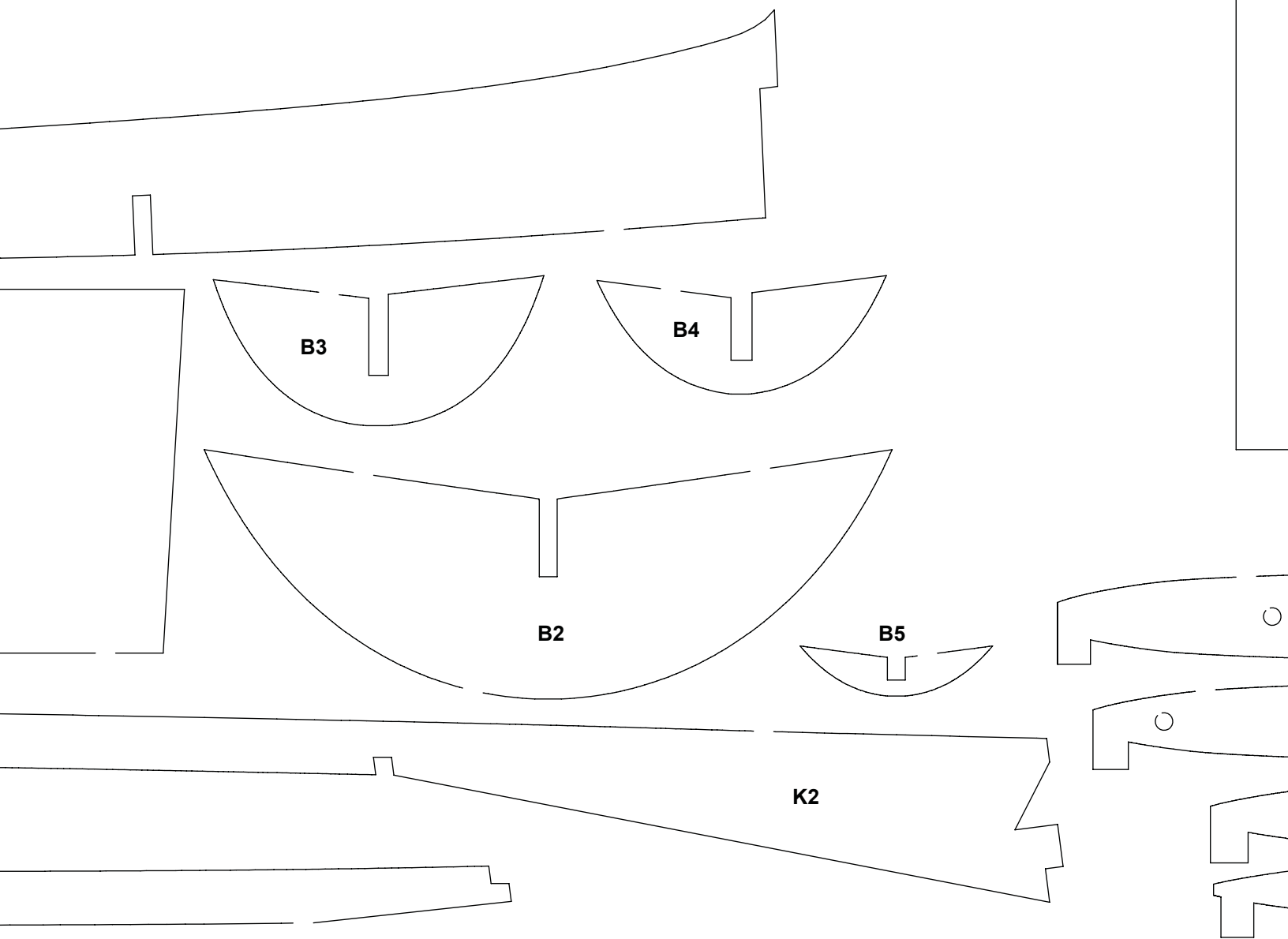
1/8" BALSA--M

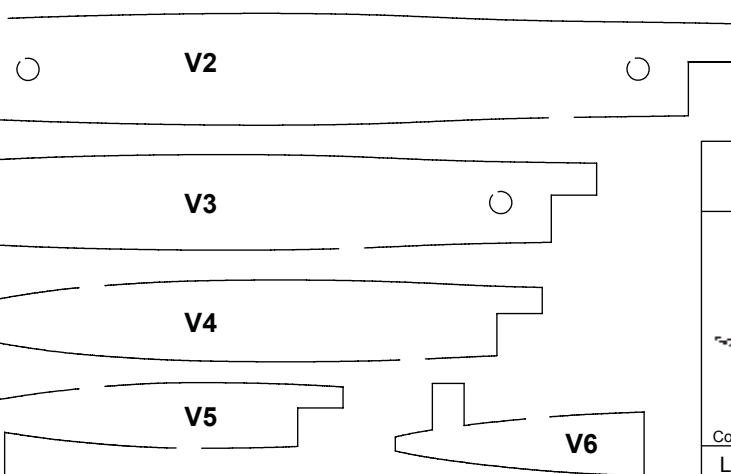
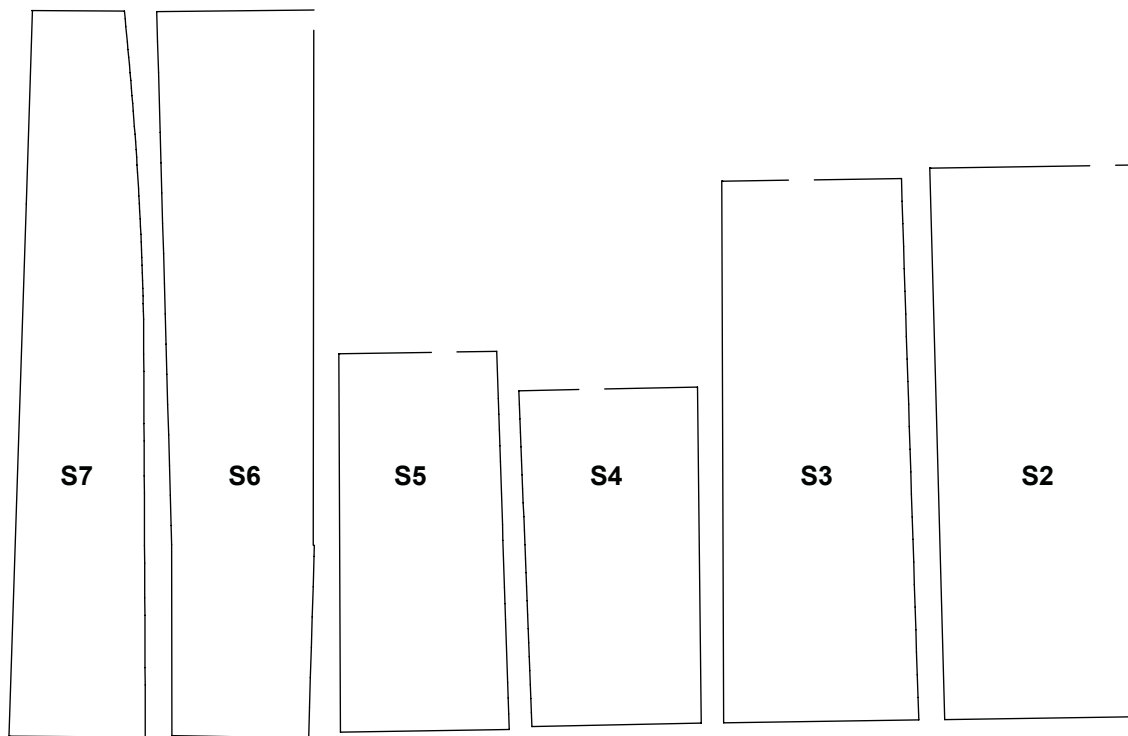
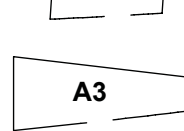
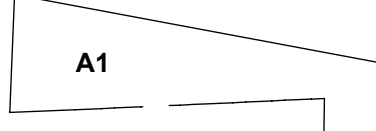
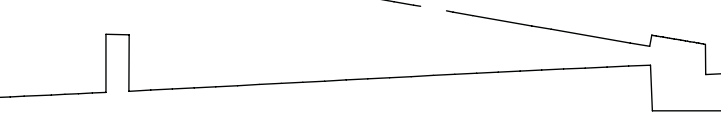
1/8" BALSA--MAKE 1 OF EACH UNLESS OTHERWISE



-MAKE 2 OF EACH

WISE NOTED

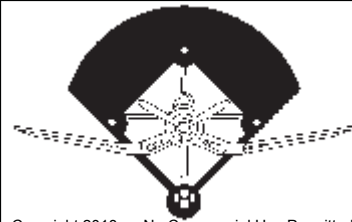




Copyright 2018  and **ModelAviation**
ACADEMY OF MODEL AERONAUTICS
Bringing Modelers Together

Copying for resale of this drawing without the written approval or consent of AMA is expressly prohibited.

INFIELD ENGINEERINGtm by Paul Kohlmann



Copyright 2018 No Commercial Use Permitted
 Laser cut kit with plastics available!

www.infieldengineering.com

Title 60" Curtiss P36 / Hawk 75		
Size X	Dwg. No. Hawk 75 plan.drw	Rev A
Scale: 1:1	Weight: 60oz	Sheet 4 of 4