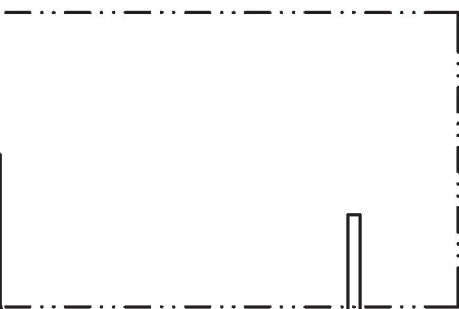


Note; Cowl Retention Blocks are 3/16 x 1/2 Bass Wood

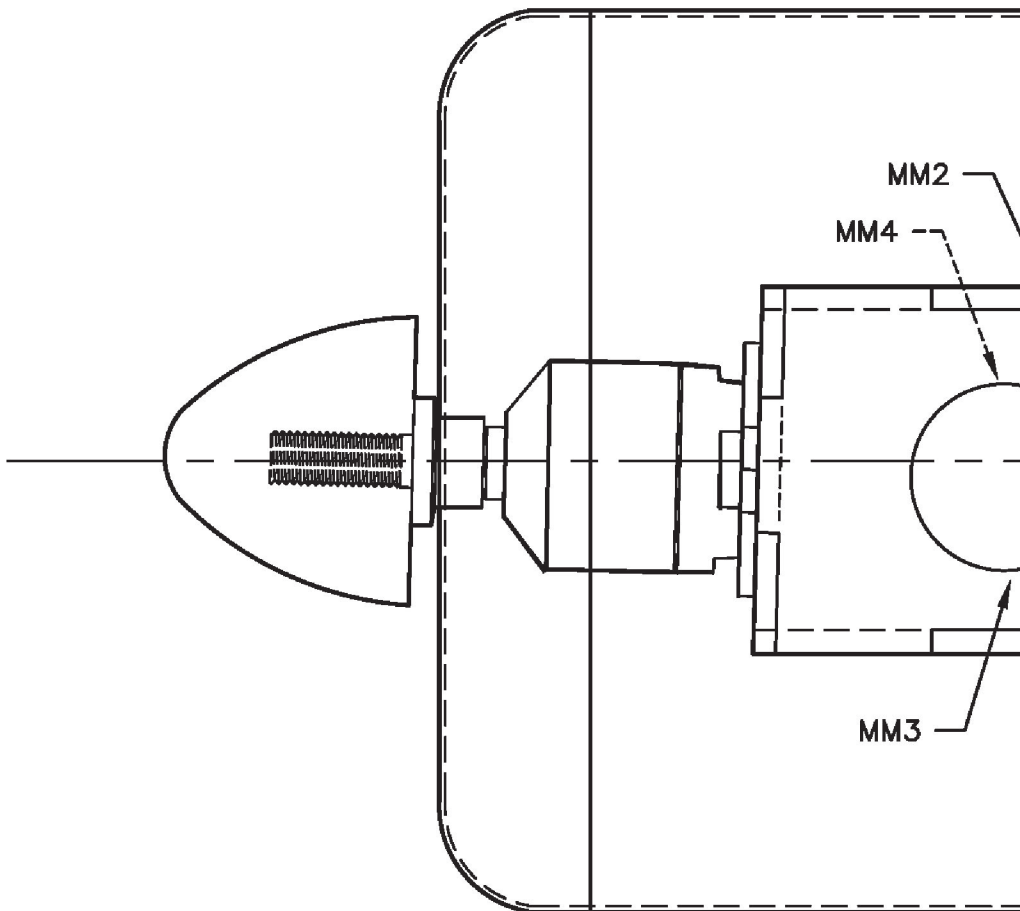
Top Cowl Retention Block Secure with a #2 SM Screw

Wing Center Section



Cabane Strut "A"

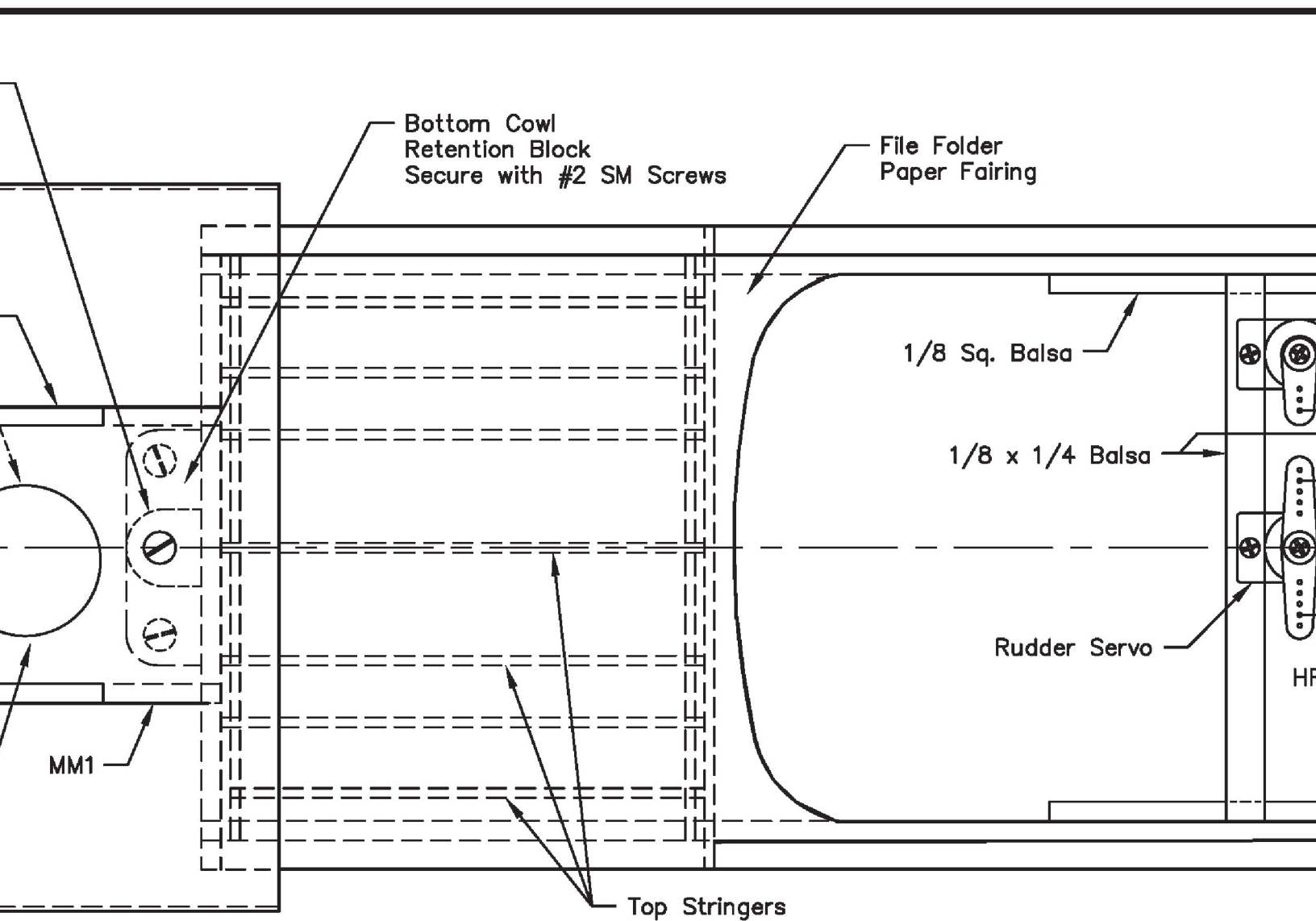
Cabane Strut "B"



MM2

MM4

MM3



Bottom Cowl  
Retention Block  
Secure with #2 SM Screws

File Folder  
Paper Fairing

1/8 Sq. Balsa

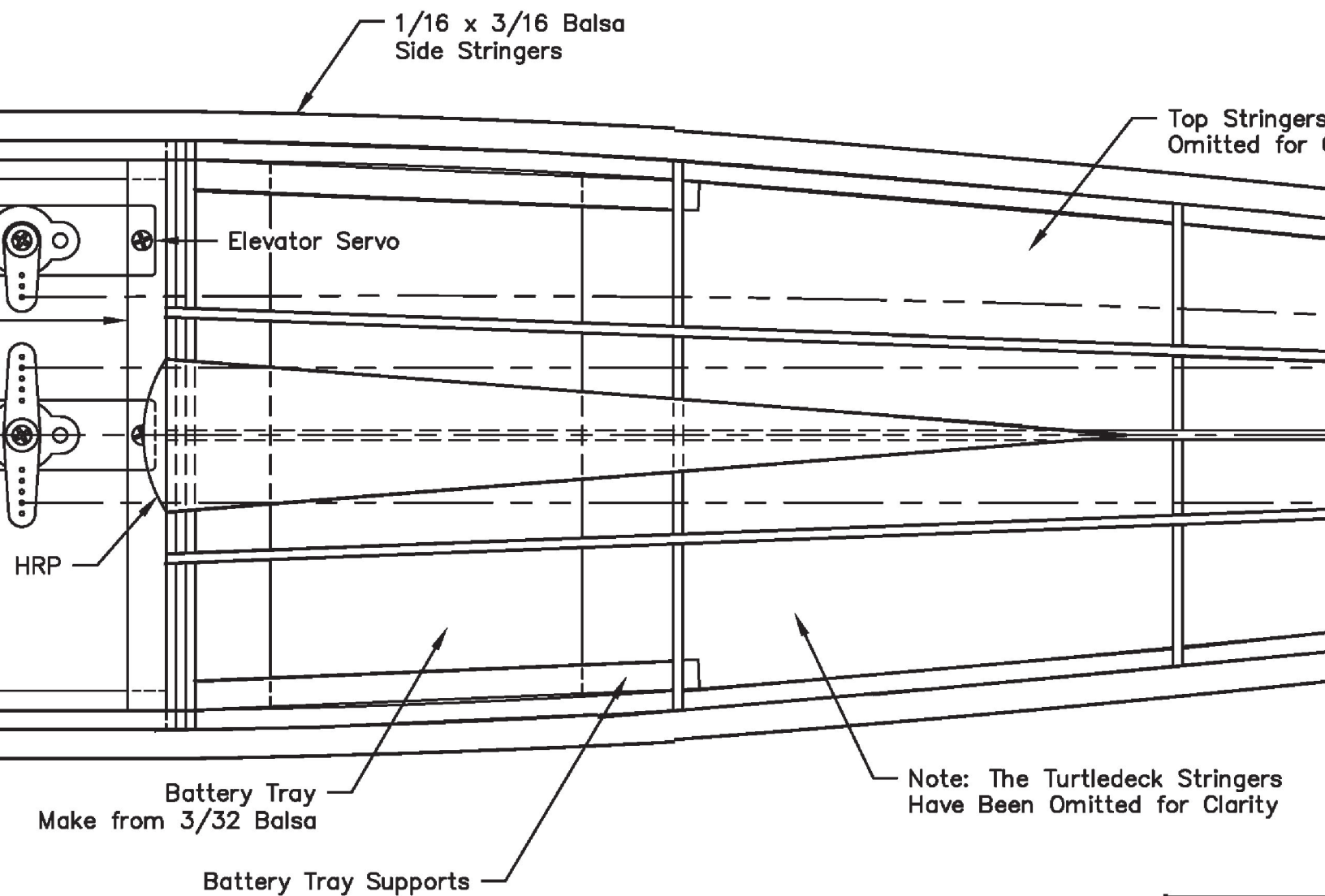
1/8 x 1/4 Balsa

Rudder Servo

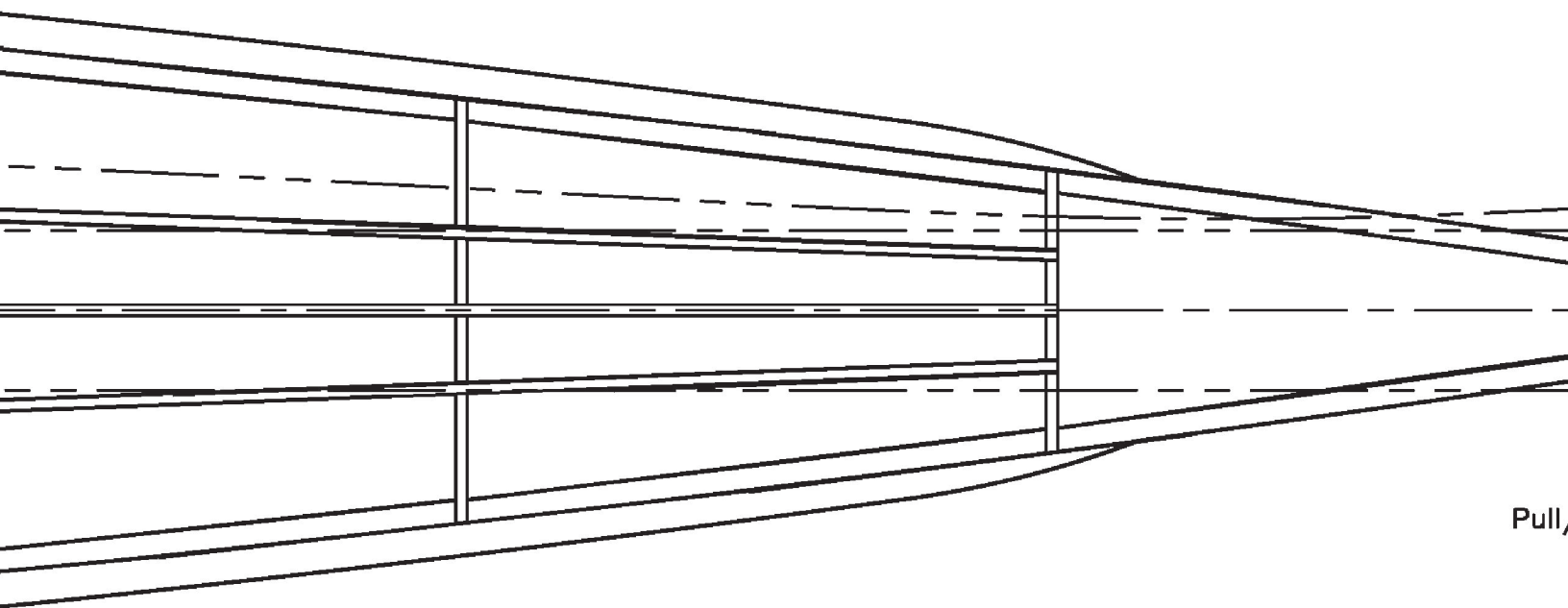
MM1

Top Stringers

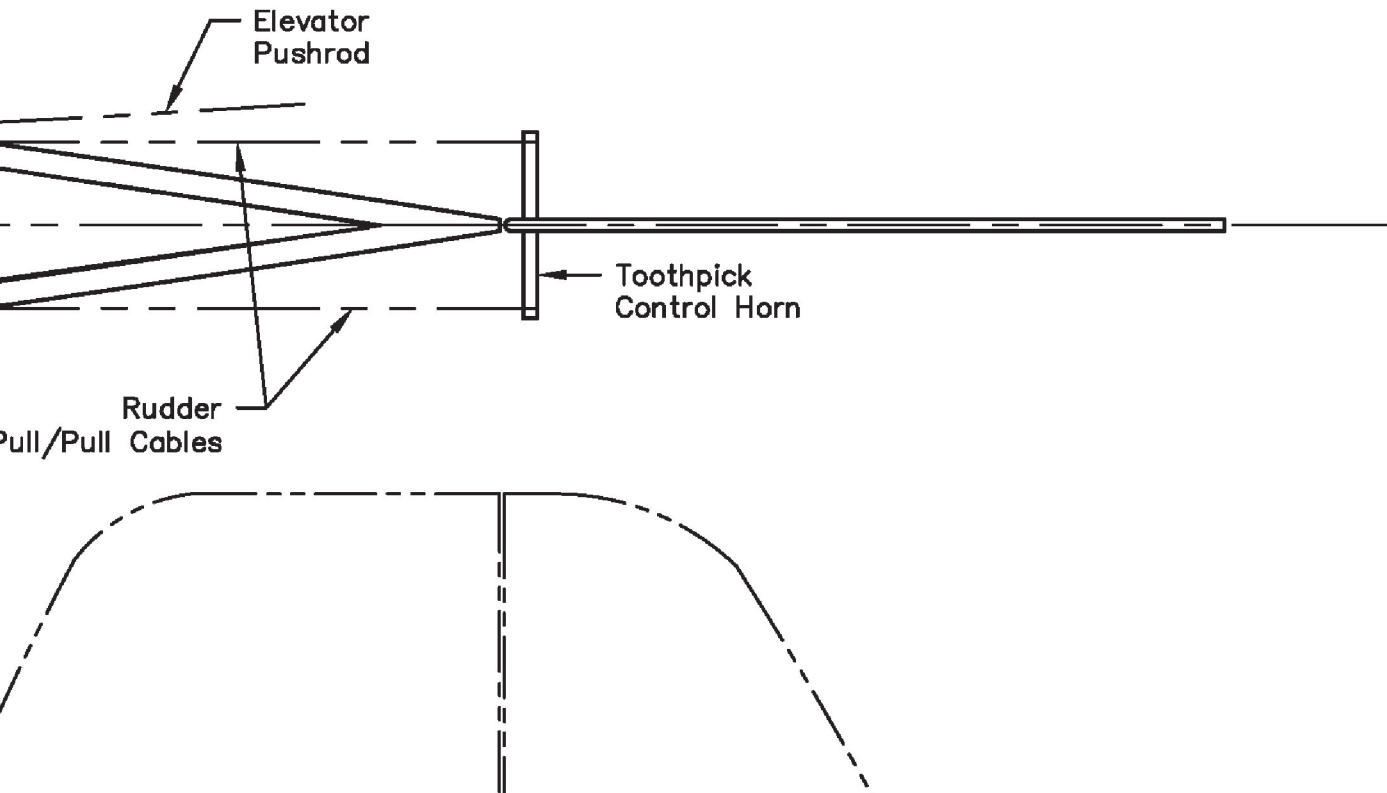
HF

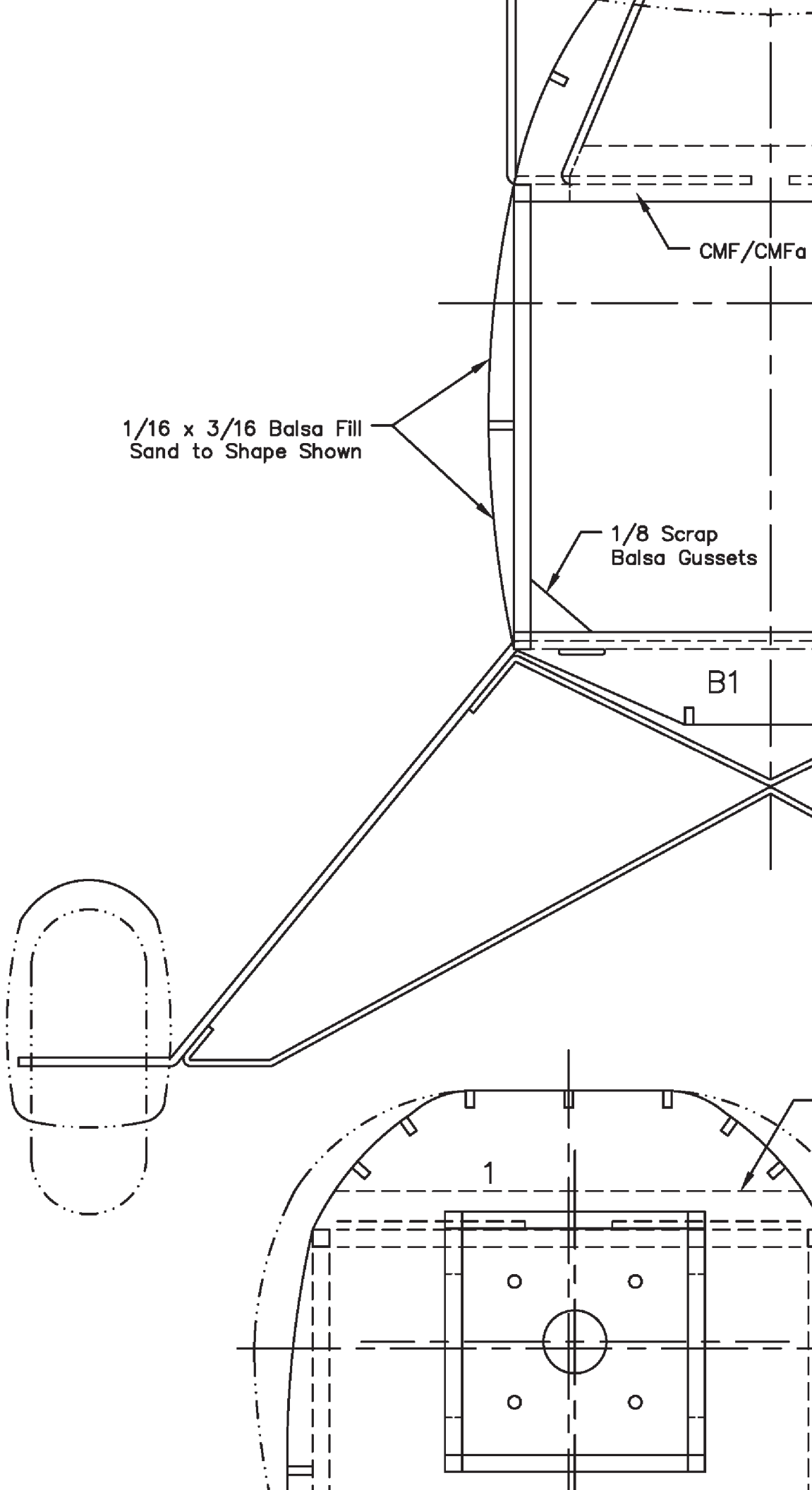


gers Have Been  
or Clarity



Pull,





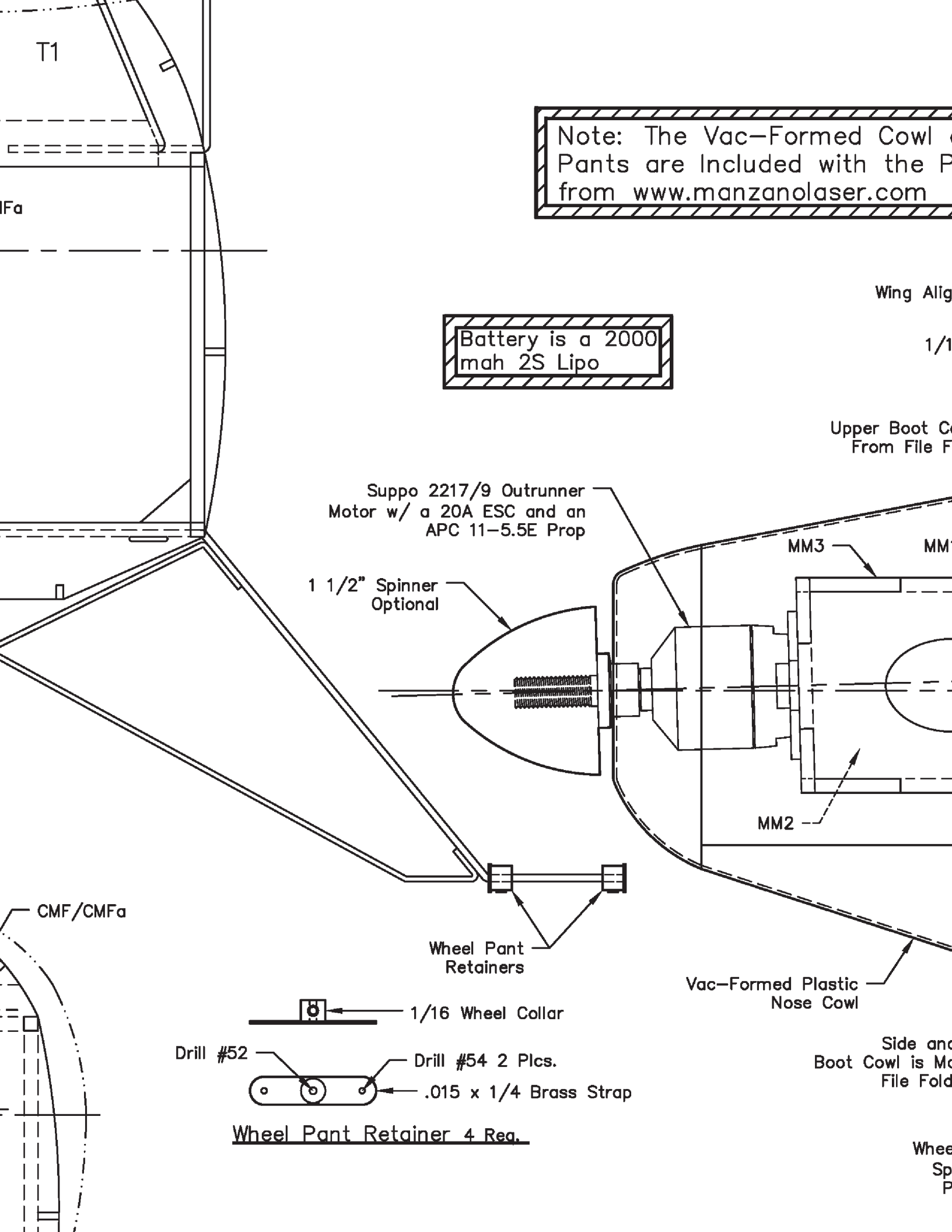
1/16 x 3/16 Balsa Fill  
Sand to Shape Shown

CMF/CMF $\alpha$

1/8 Scrap  
Balsa Gussets

B1

1



Note: The Vac-Formed Cowl & Pants are Included with the P from [www.manzanolaser.com](http://www.manzanolaser.com)

Battery is a 2000 mah 2S Lipo

Suppo 2217/9 Outrunner Motor w/ a 20A ESC and an APC 11-5.5E Prop

1 1/2" Spinner Optional

MM3

MM

MM2

CMF/CMFa

Wheel Pant Retainers

Vac-Formed Plastic Nose Cowl

1/16 Wheel Collar

Drill #52

Drill #54 2 Plcs.

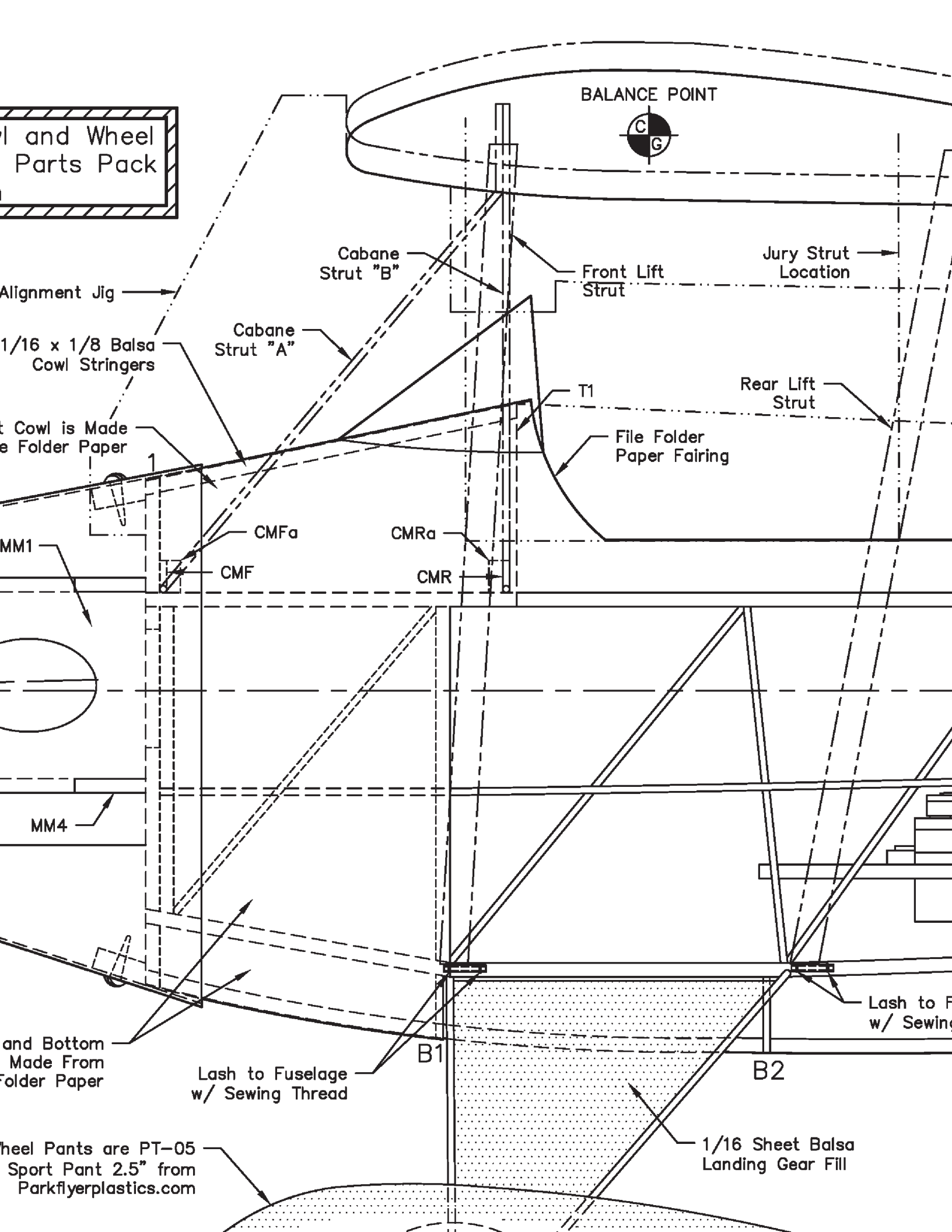
.015 x 1/4 Brass Strap

Side and Boot Cowl is Made From File Folder

Wheel Pant Retainer 4 Req.

Wheel Sp P





Wheel and Wheel Parts Pack

BALANCE POINT



Alignment Jig

Cabane Strut "B"

Front Lift Strut

Jury Strut Location

1/16 x 1/8 Balsa Cowl Stringers

Cabane Strut "A"

Rear Lift Strut

Cowl is Made from File Folder Paper

File Folder Paper Fairing

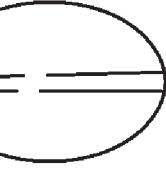
MM1

CMFa

CMRa

CMF

CMR



MM4

Wheel and Bottom Made From File Folder Paper

Lash to Fuselage w/ Sewing Thread

B1

B2

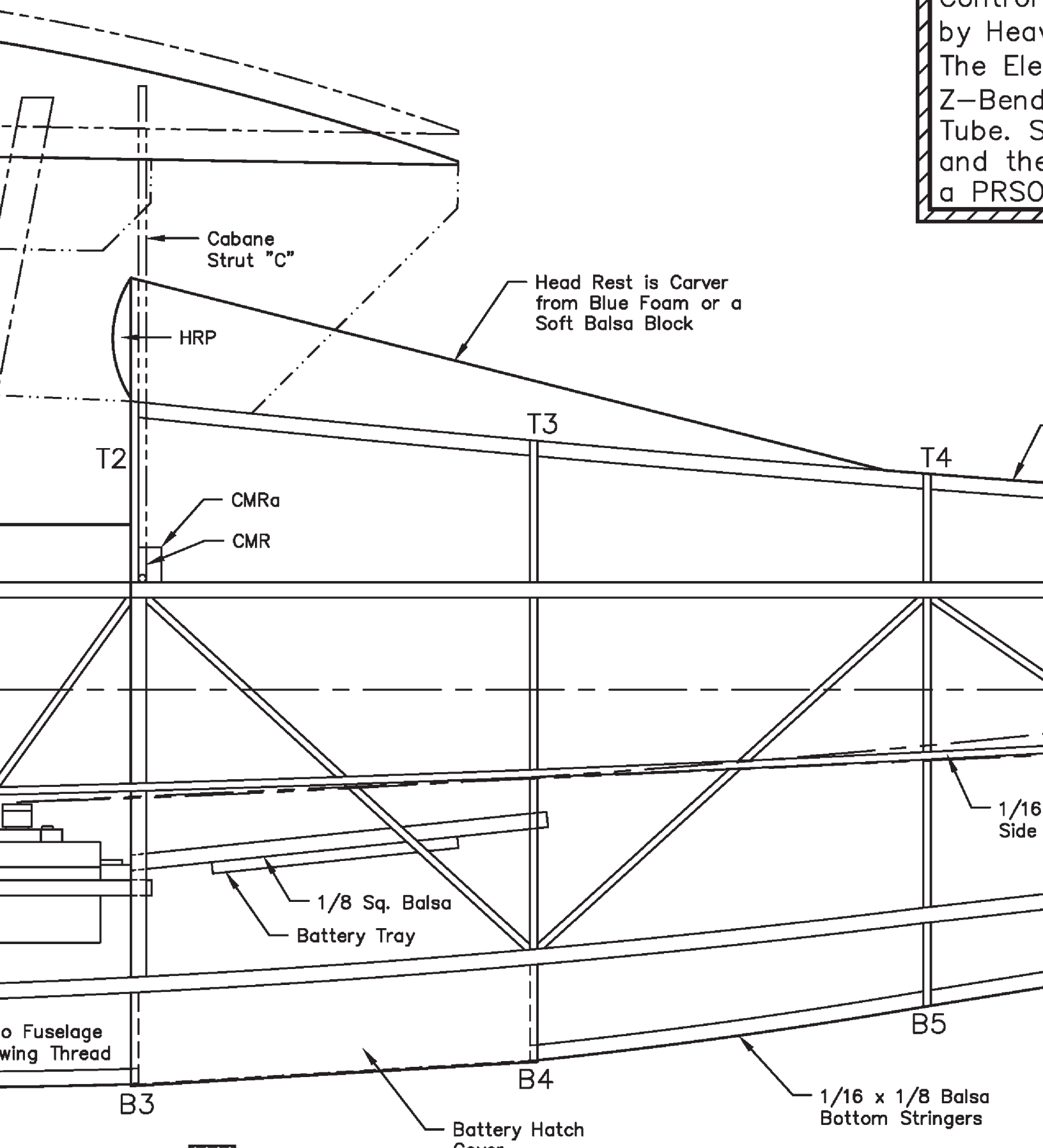
Lash to Fuselage w/ Sewing

Wheel Pants are PT-05 Sport Pant 2.5" from Parkflyerplastics.com

1/16 Sheet Balsa Landing Gear Fill

Battery Tray Supports  
Make from 3/16 Sq. Balsa

Control  
by Heavy  
The Ele  
Z-Bend  
Tube. S  
and the  
a PRSO



Cabane  
Strut "C"

HRP

Head Rest is Carver  
from Blue Foam or a  
Soft Balsa Block

T2

T3

T4

CMRa

CMR

1/16  
Side

1/8 Sq. Balsa

Battery Tray

Fuselage  
wing Thread

B3

B4

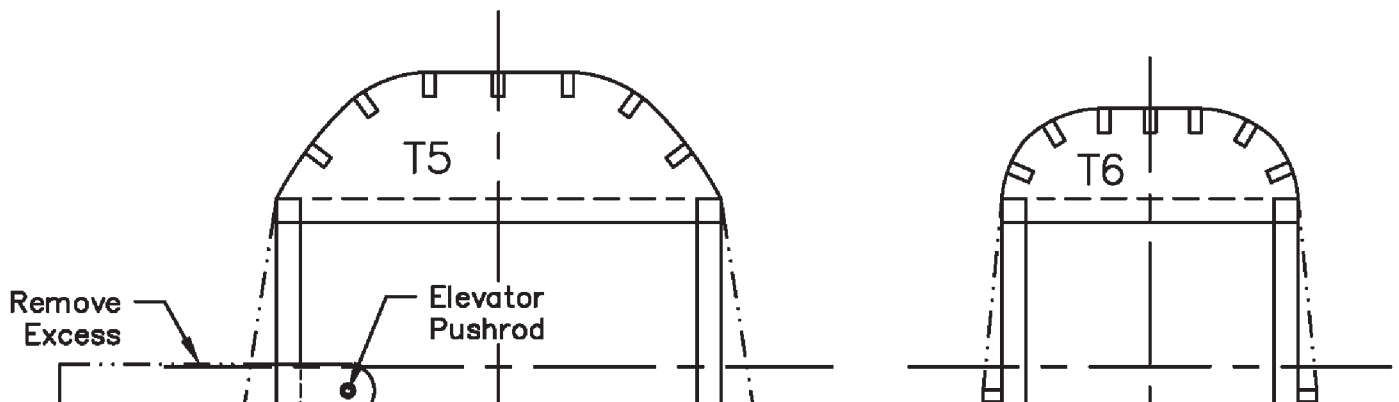
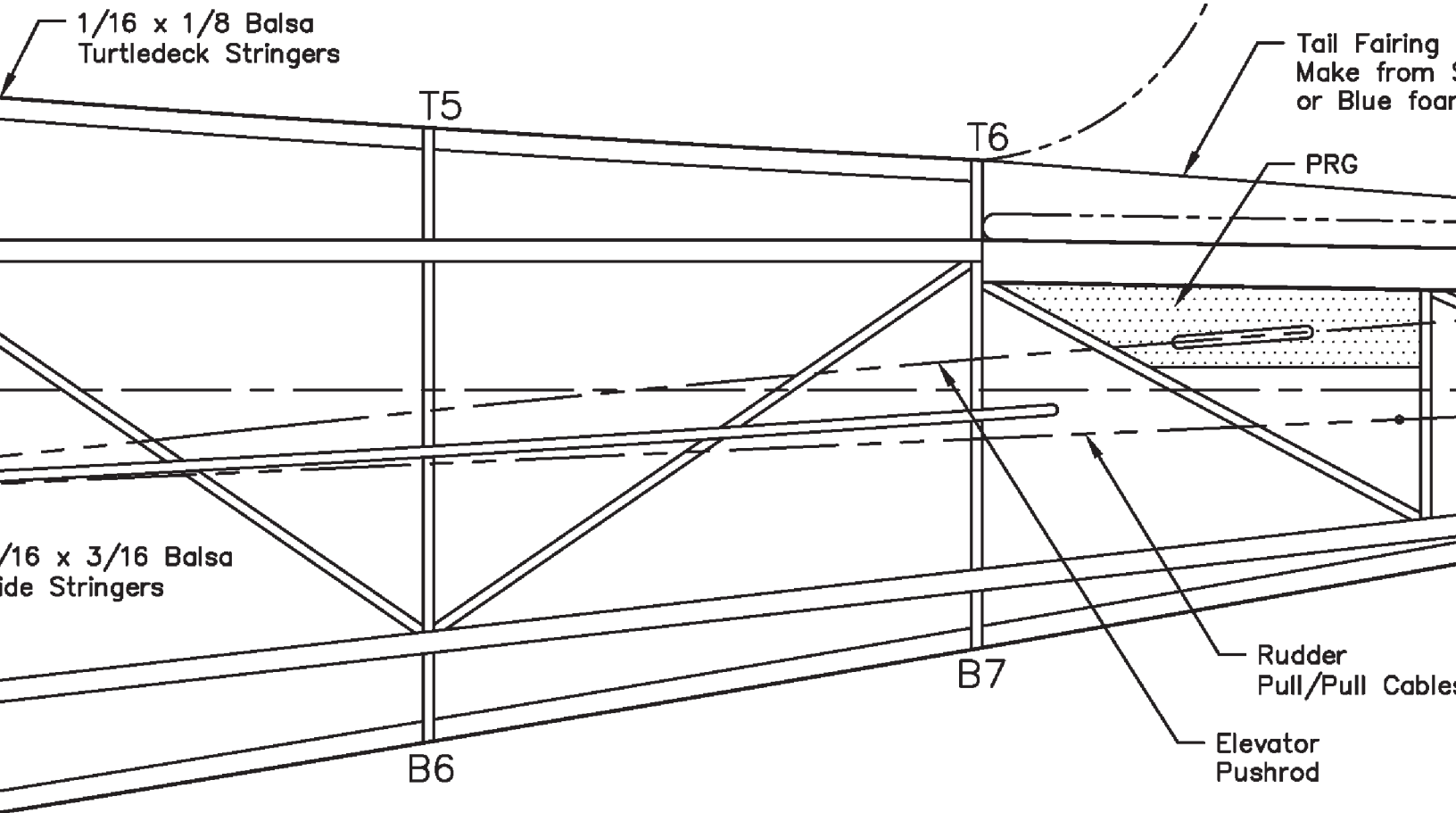
B5

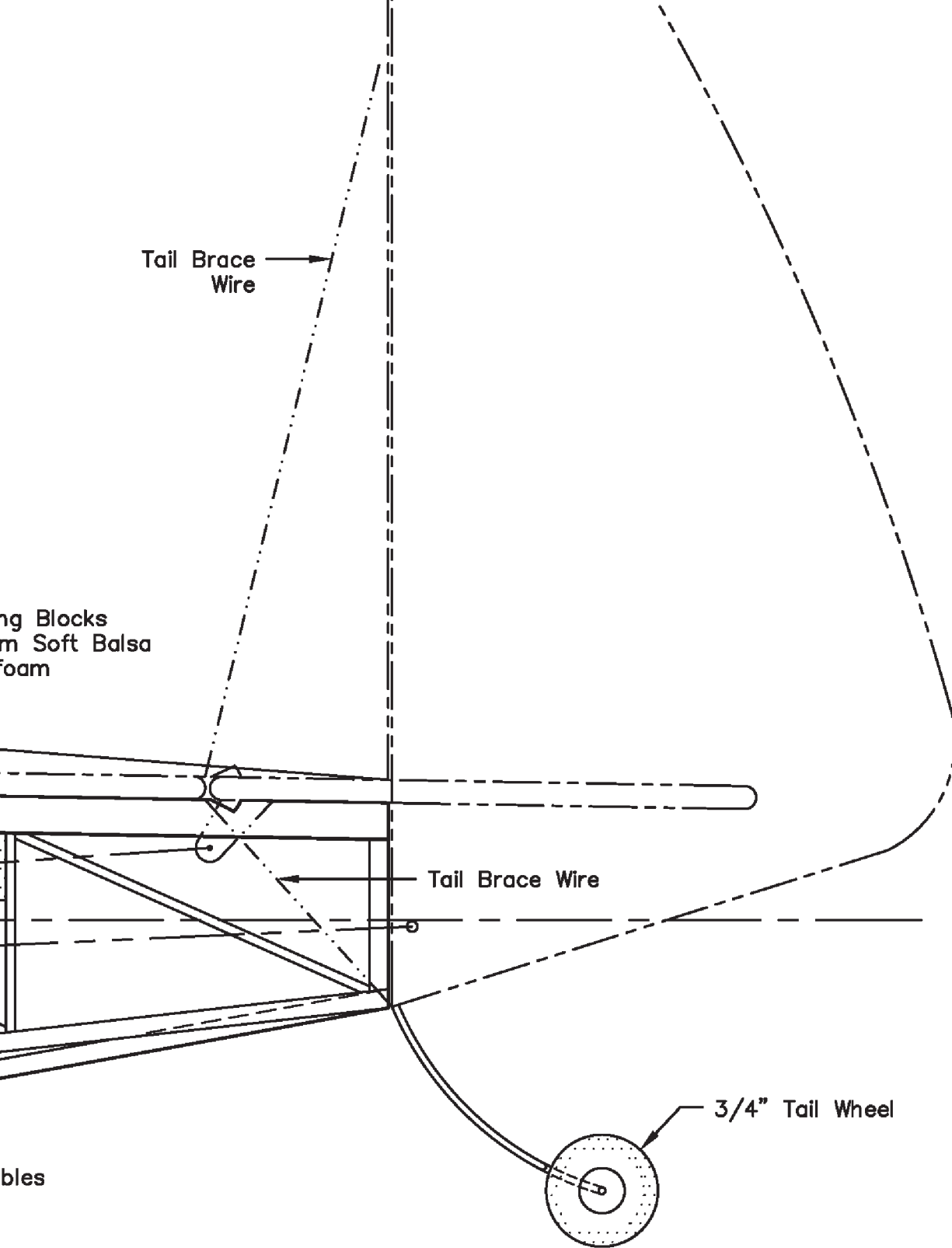
Battery Hatch  
Cover

1/16 x 1/8 Balsa  
Bottom Stringers

Strut Retention Tube  
Make from 1/16 O. D.  
Aluminum Tubing 8 Req.

Control System Note: The Rudder is Controlled by Heavy Duty Nylon Pull/Pull Cables. Elevator by a .025" Steel Pushrod w/ a Nut at Both Ends in a .032" I. D. Plastic Support the Tube at the Back at PRG the Front and Two Points In Between with SO.





Tail Brace Wire

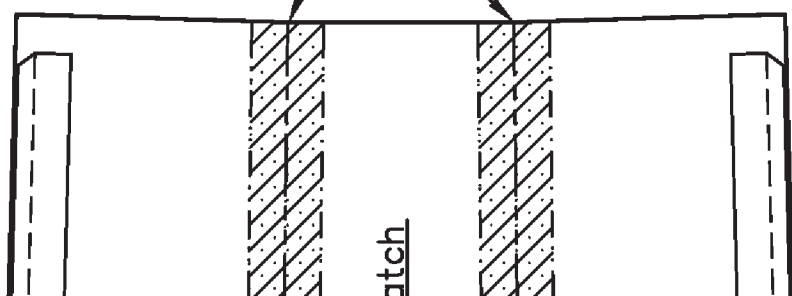
ng Blocks  
m Soft Balsa  
Foam

Tail Brace Wire

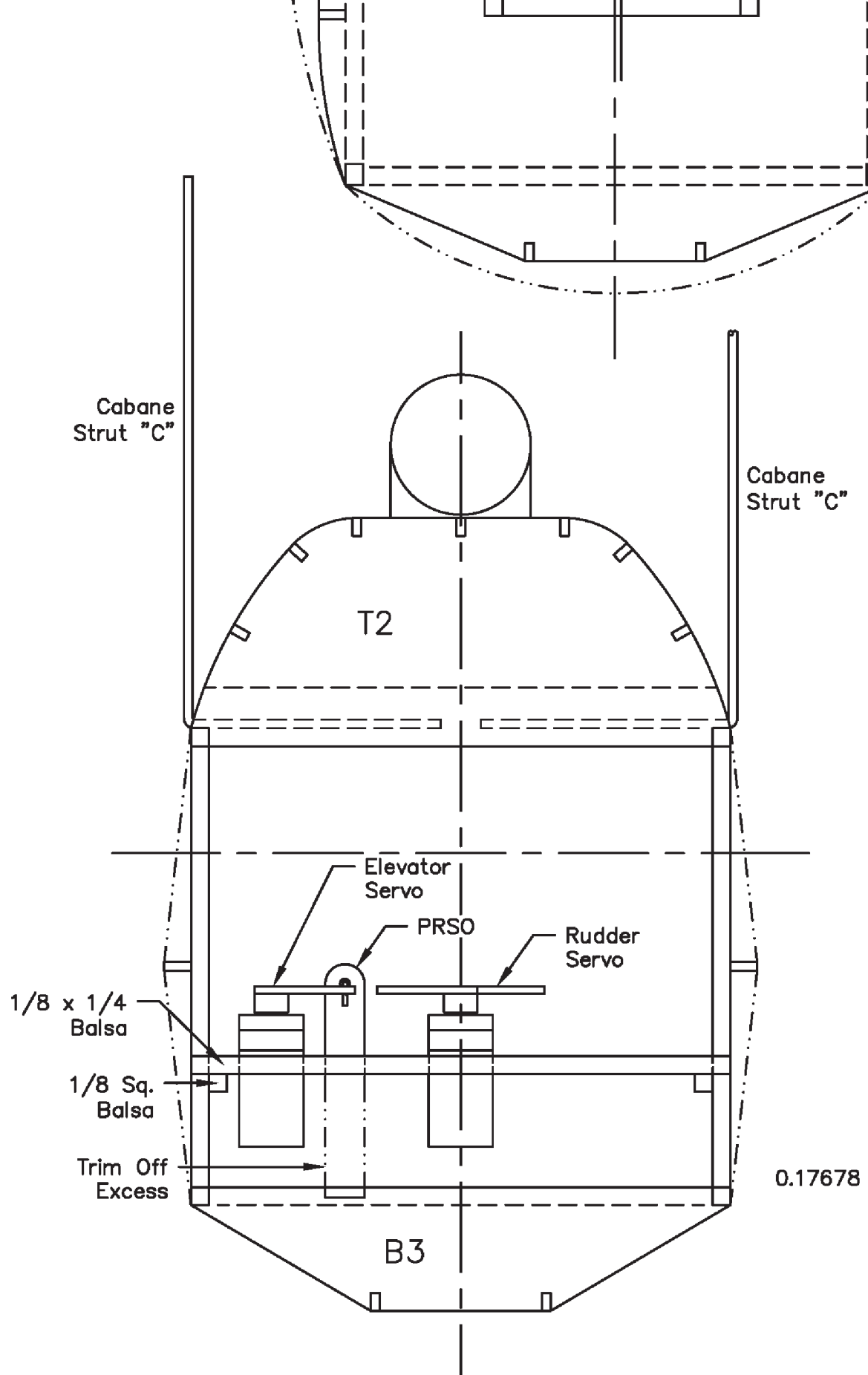
3/4" Tail Wheel

bles

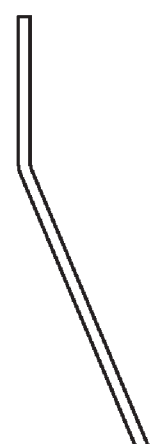
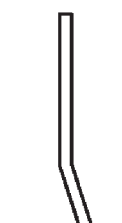
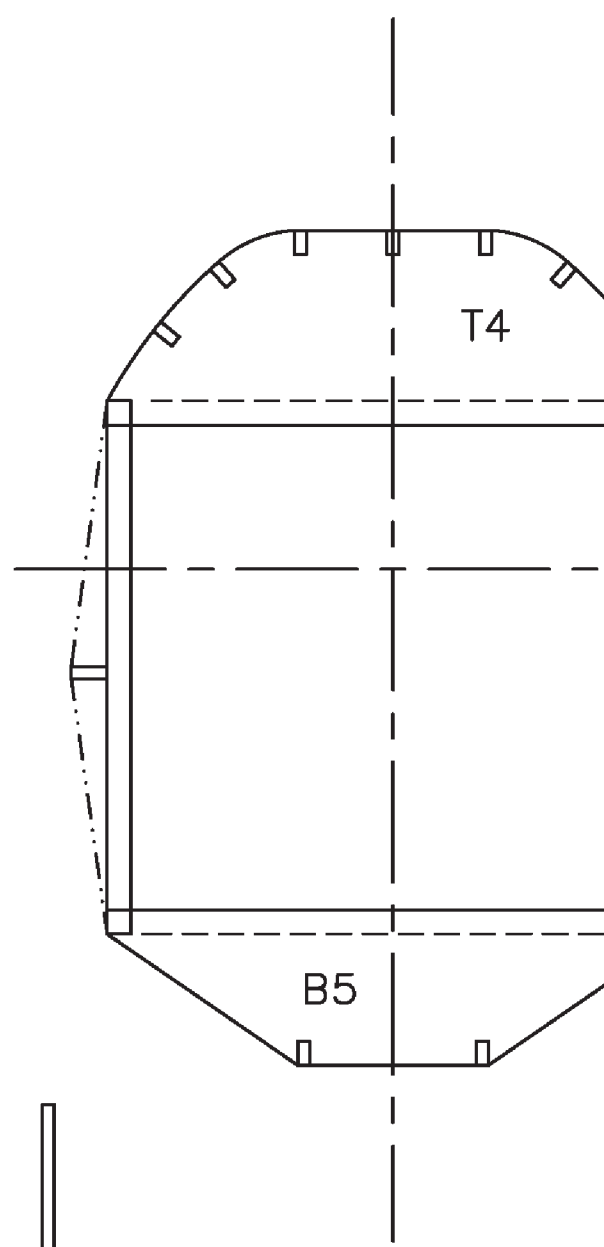
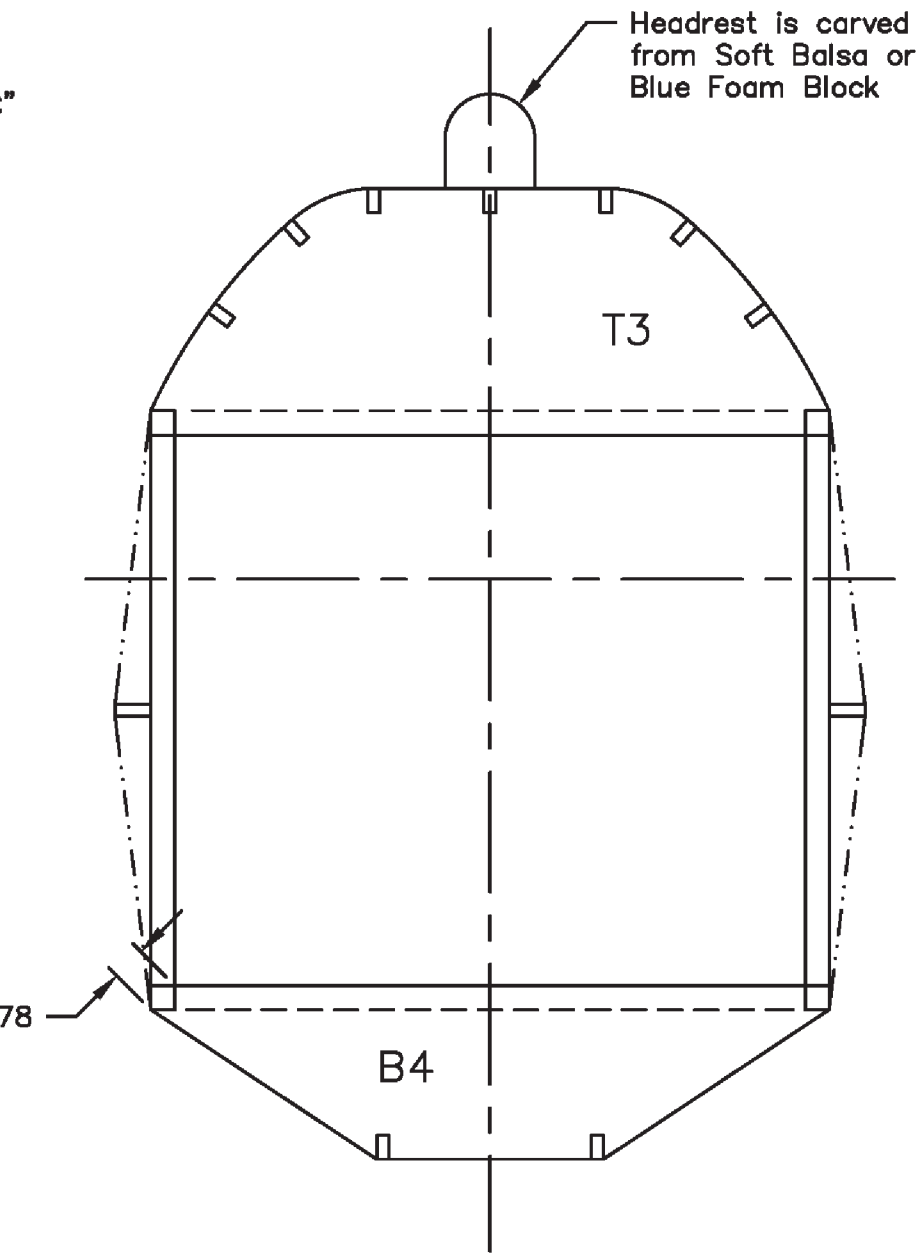
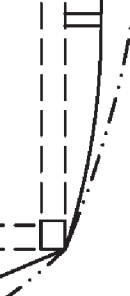
Reinforce with Hinge Tape  
and Fold to Conform the  
the Fuselage



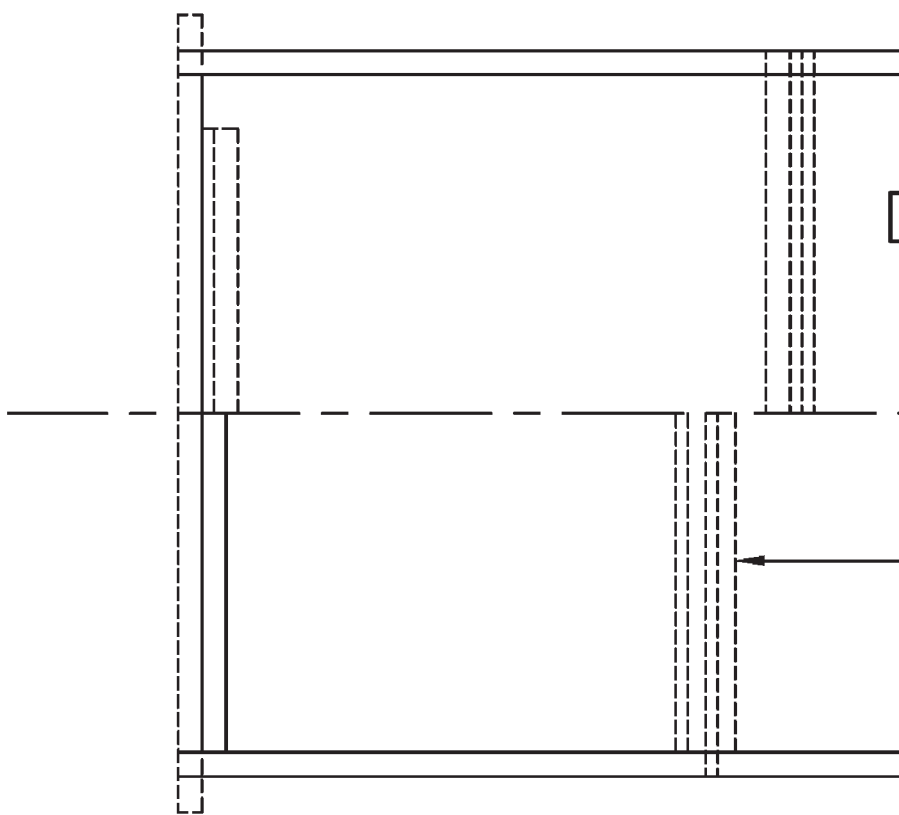
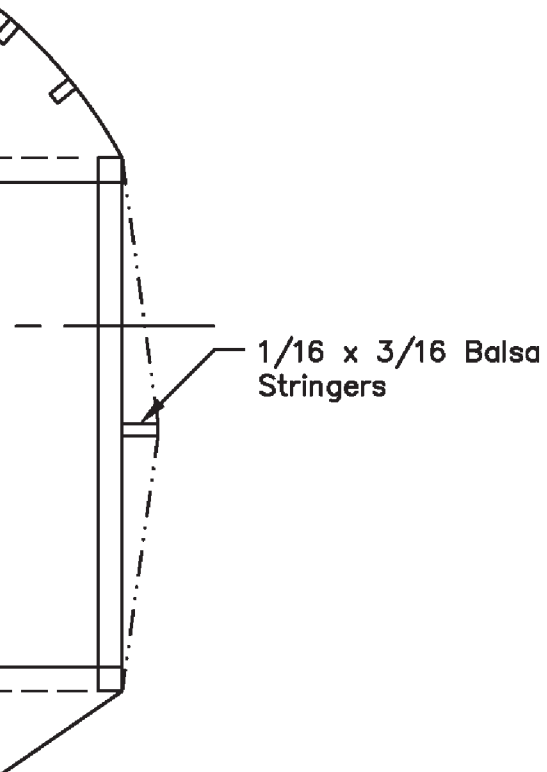
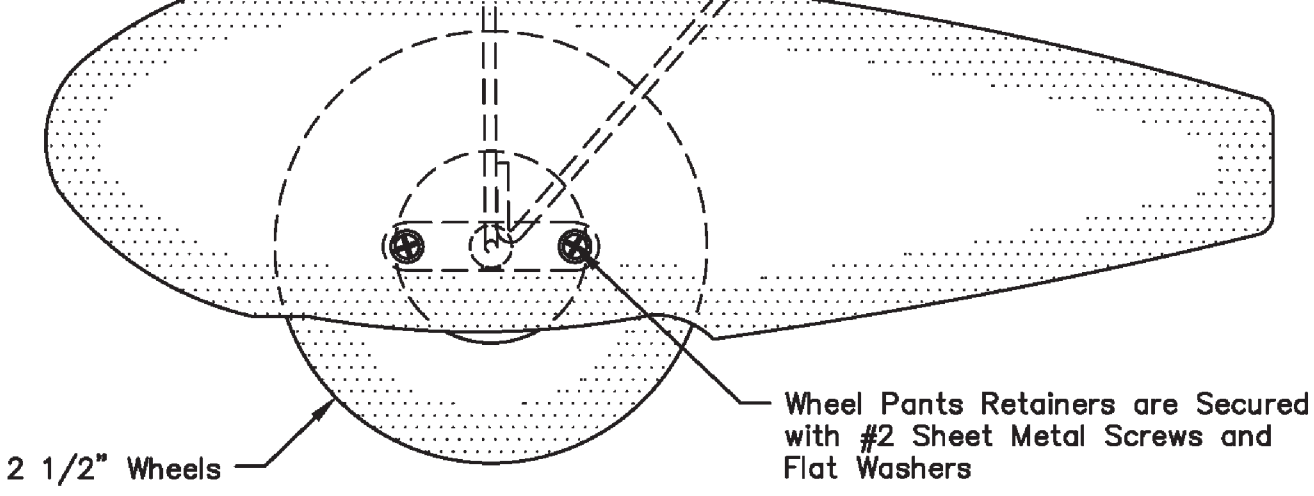
atch



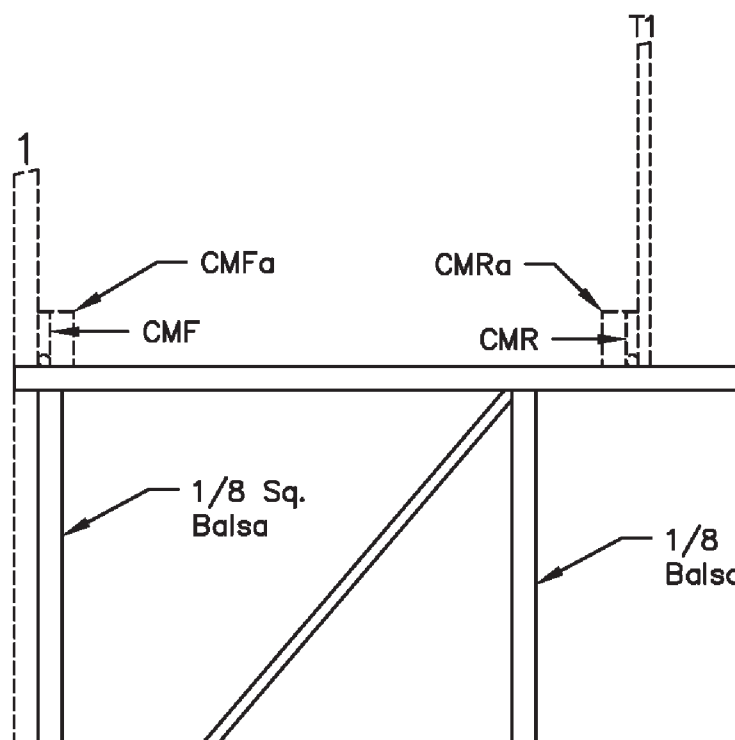
Note: The Strut Retention  
Lashed to the Fuselage w/  
Thread and Secured wit Thi



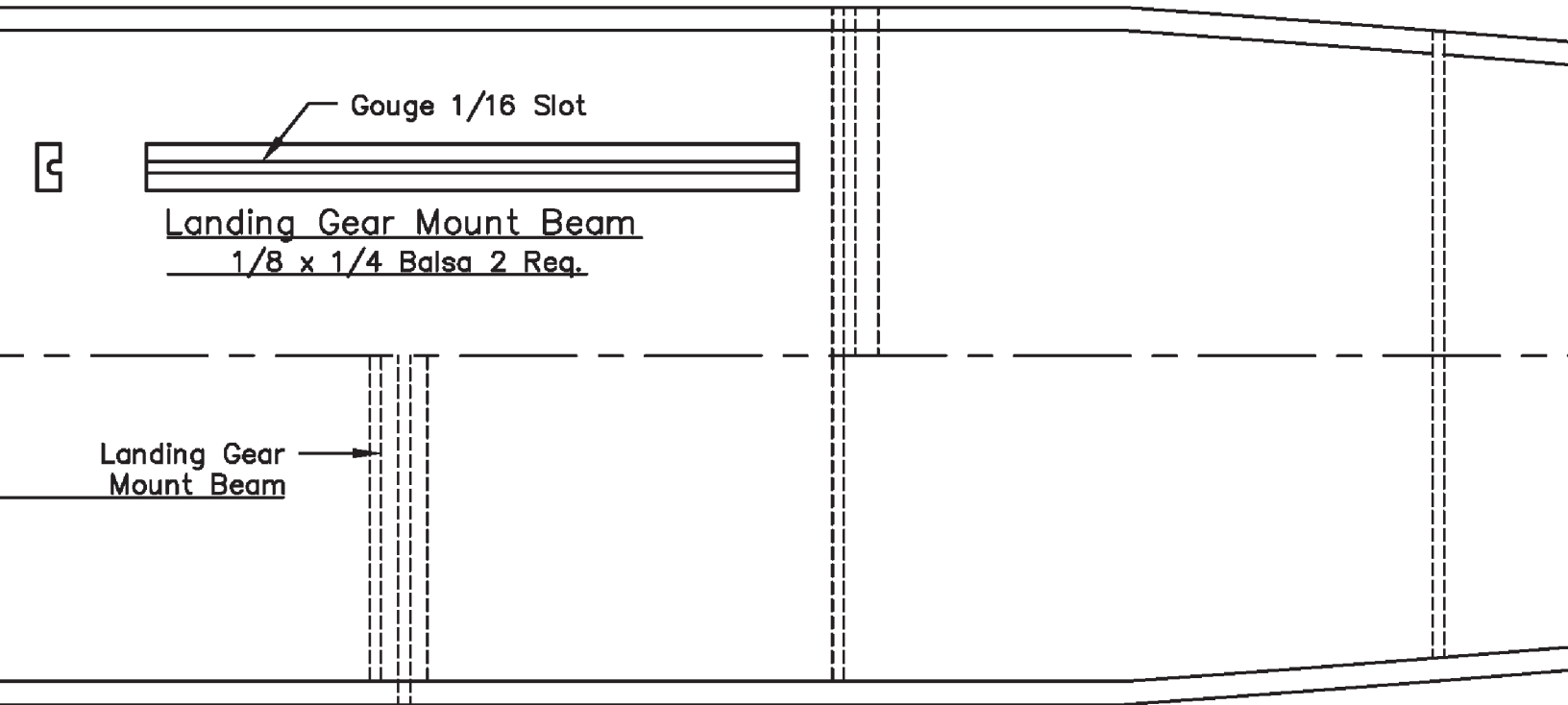
n Tubes are  
w/ Sewing  
Thin Cya



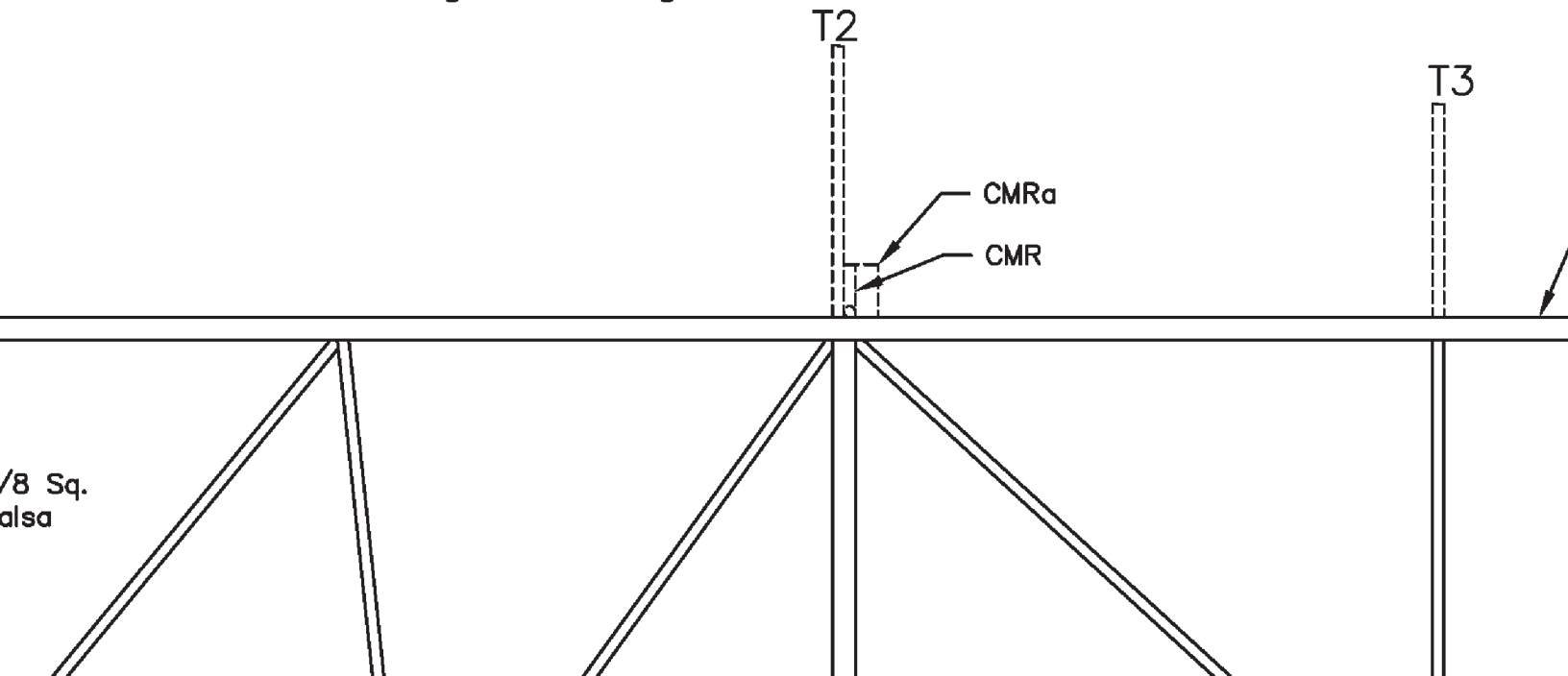
Cabane  
Strut "C"



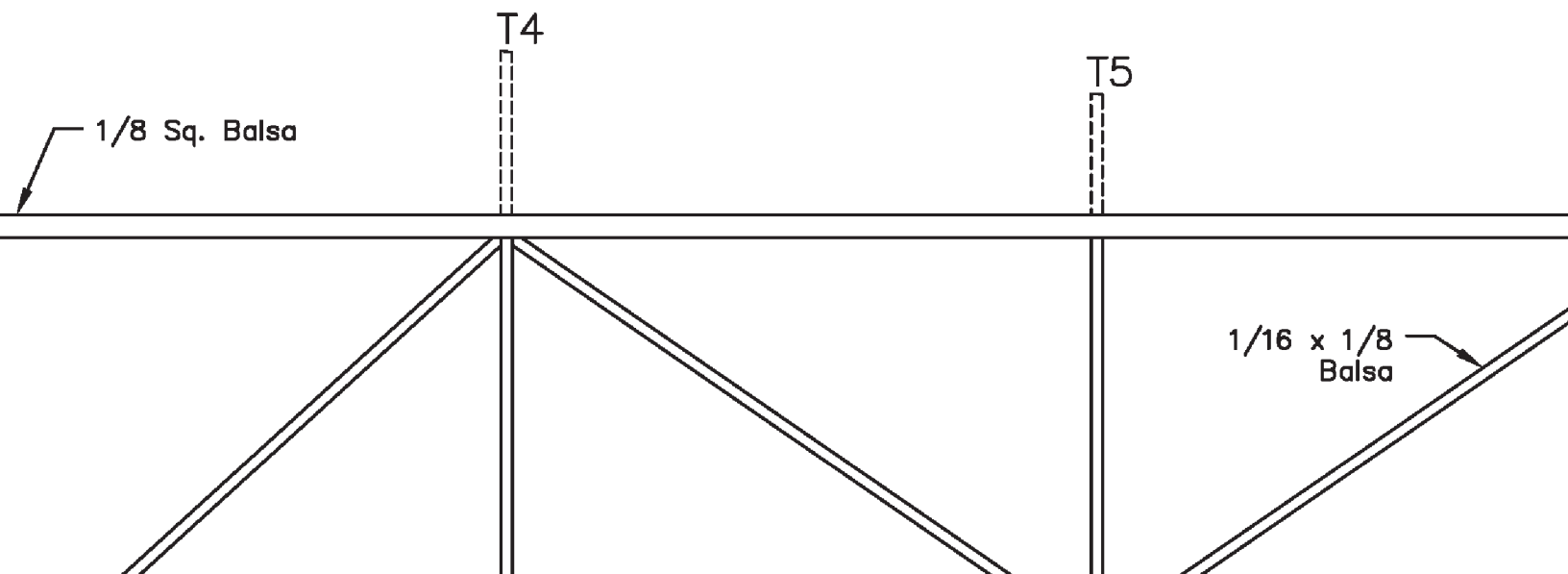
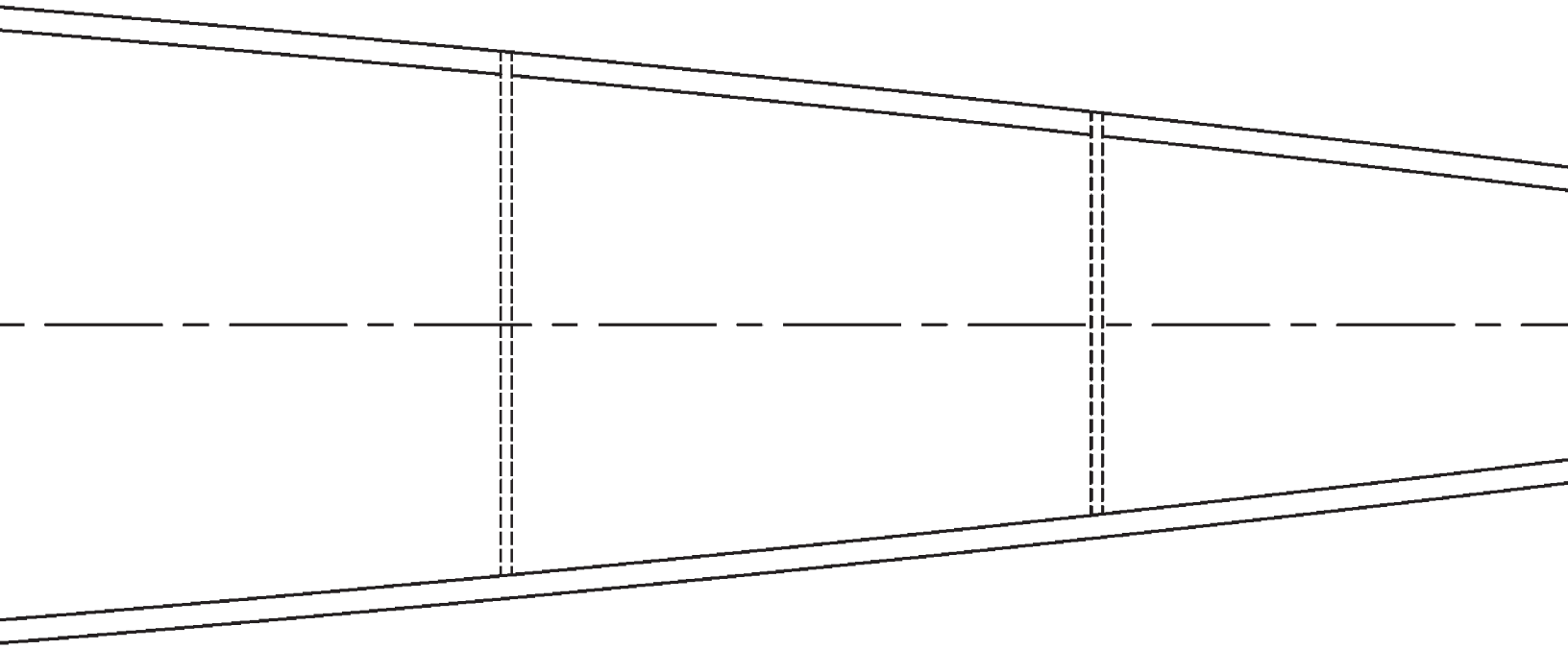
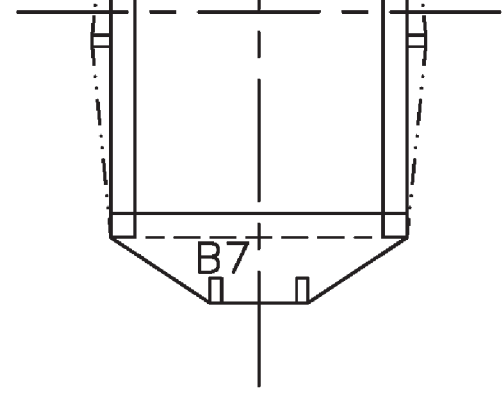
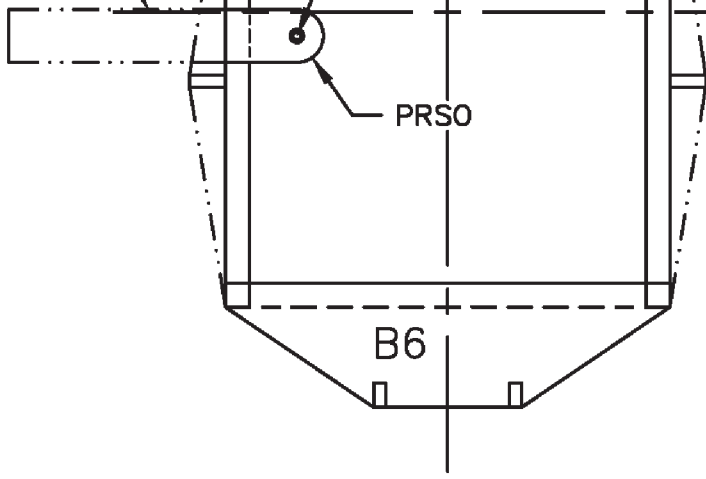
Note: The Rudder and Elevator Servos are Screwed to 1/8 x 1/4 Balsa Mount Beams Attached to 1/8 Sq. Balsa Support Beams

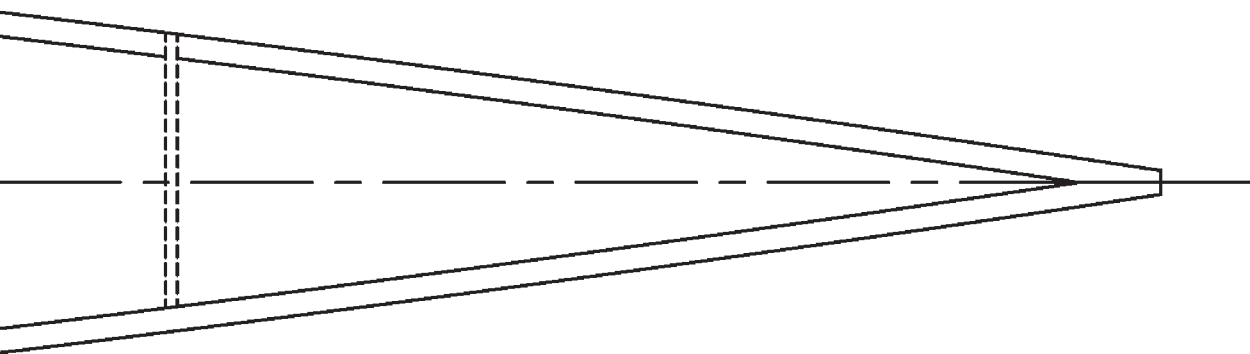
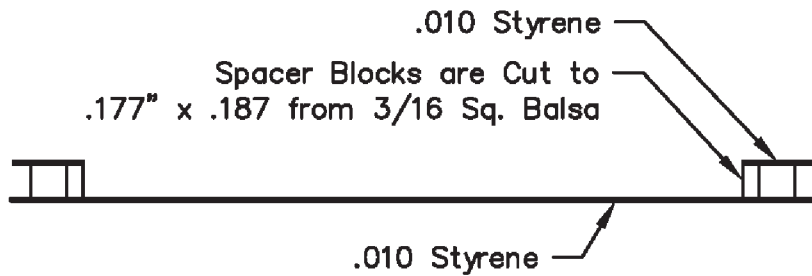
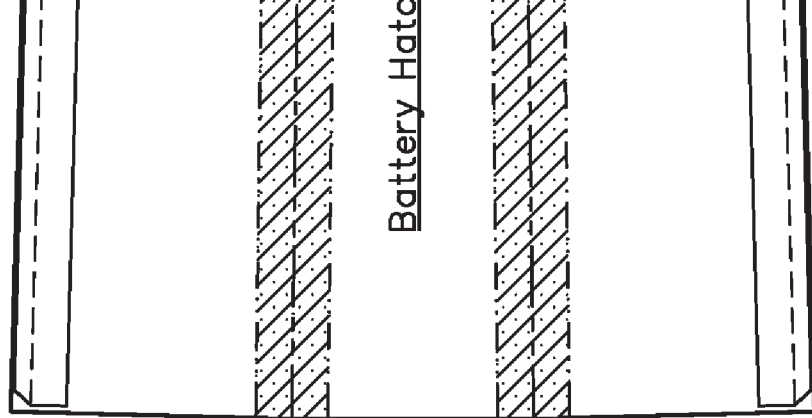


Fuselage Framing Plan

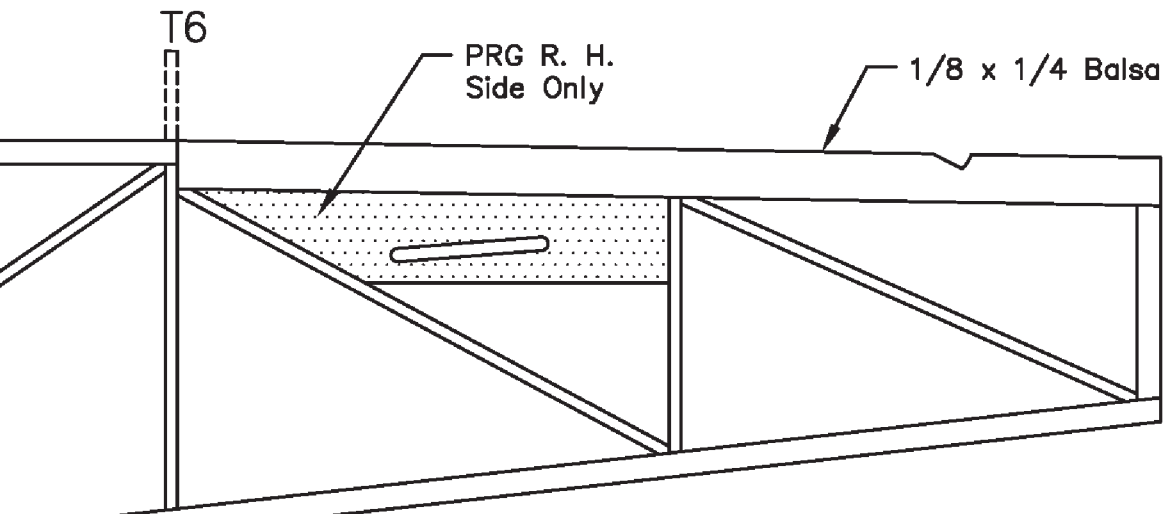


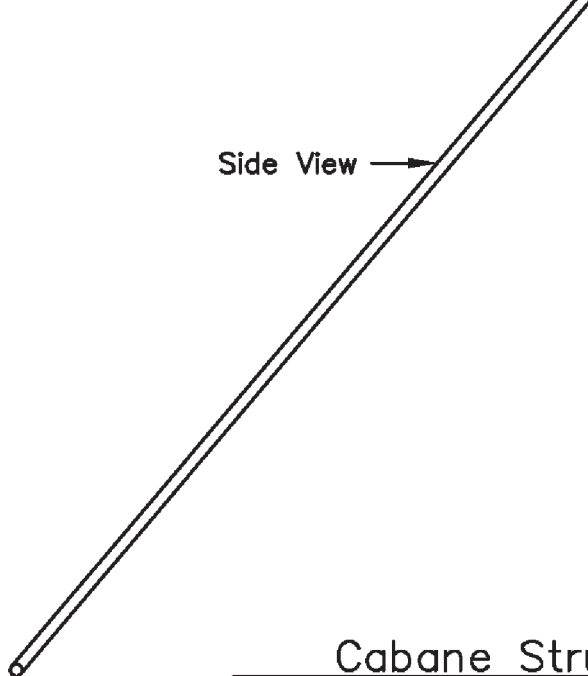






**Control Throws:**  
 Ailerons: 1/2" Up & Down w/ 70% Dual Rate  
 Elevator: 3/4" Up 5/8" Down w/ 70% Dual Rate  
 Rudder: 1 1/2" Each Way





Side View →

S

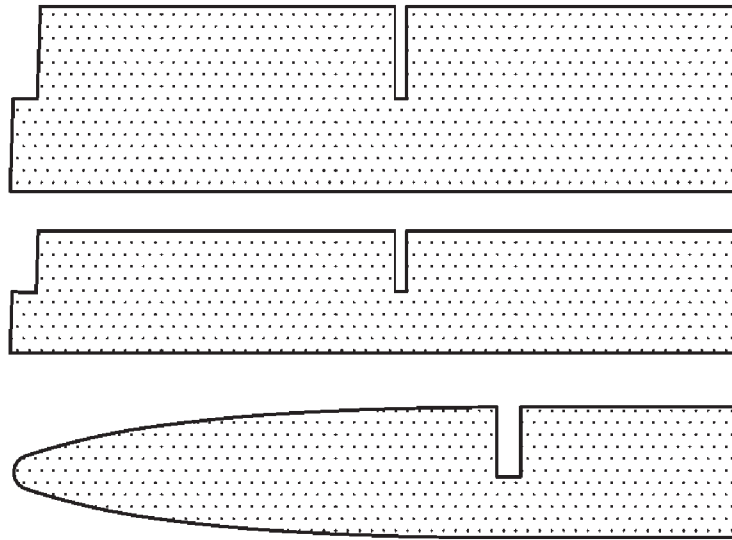
Cabane Struts  
Make from 1/16 Wire  
1 R. H. & 1 L. H. Each

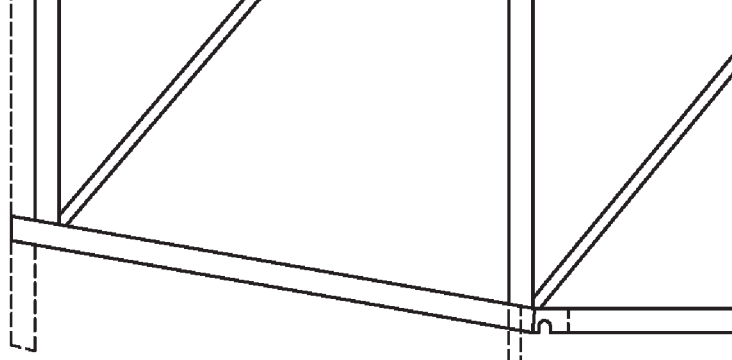
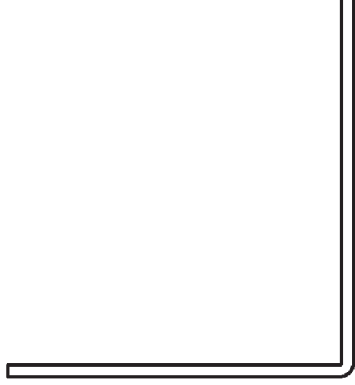
Front view

Cabane  
Strut "A"

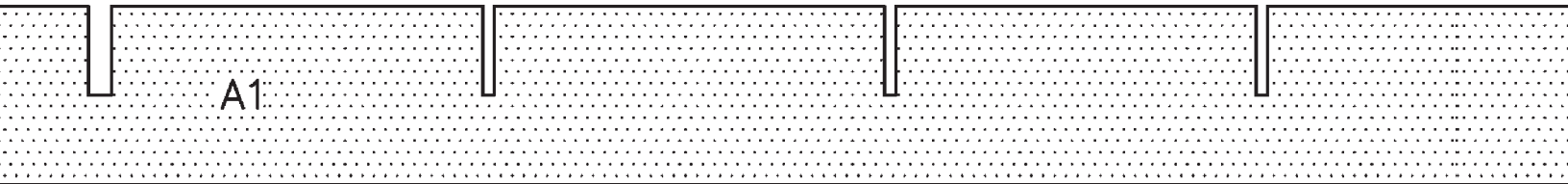
S  
Wire  
each Req.

Cabane  
Strut "B"

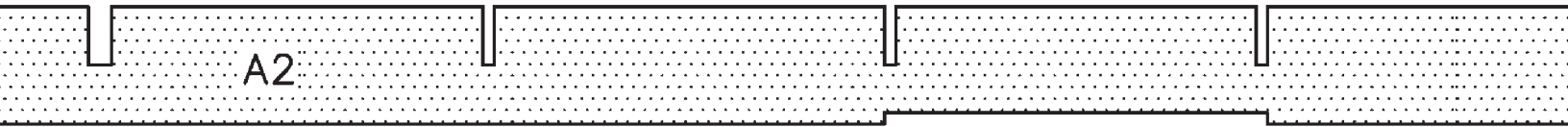




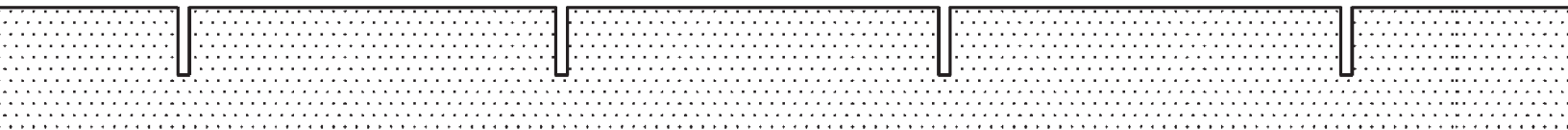
B1

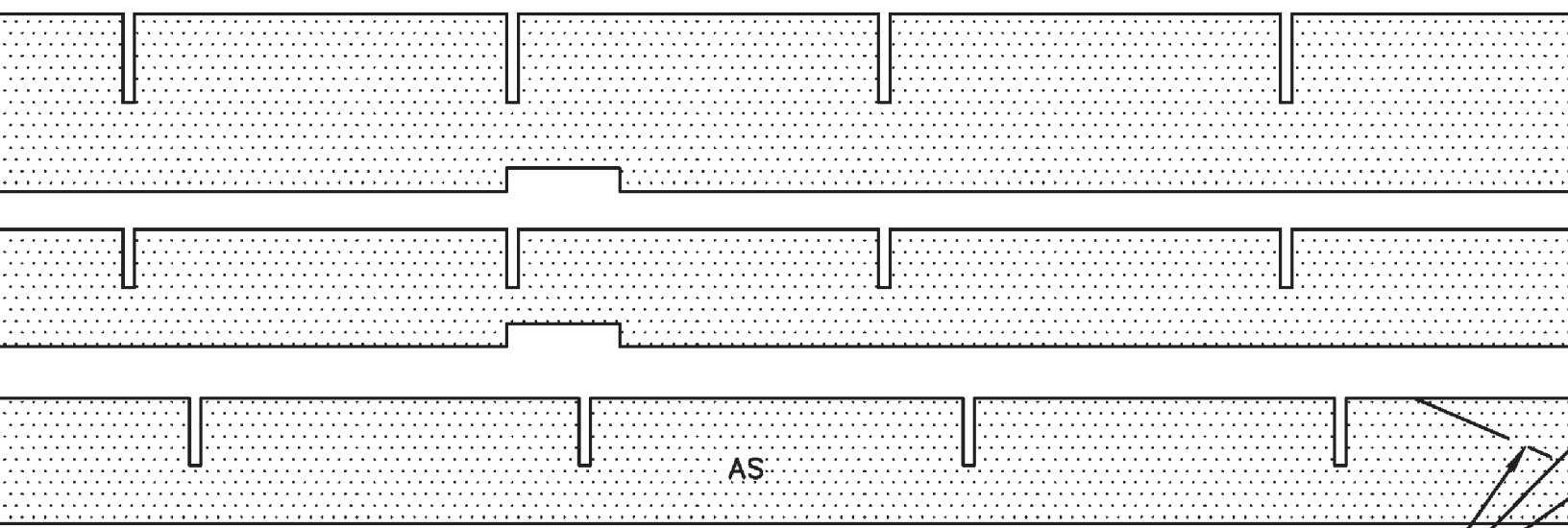
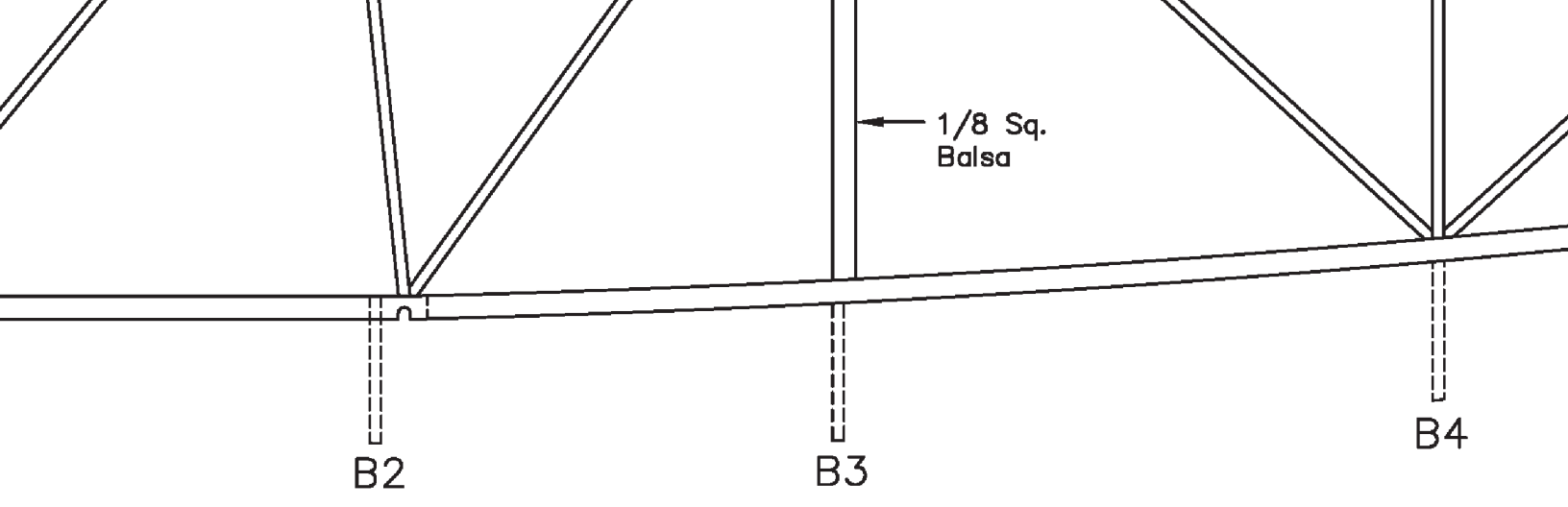


A1

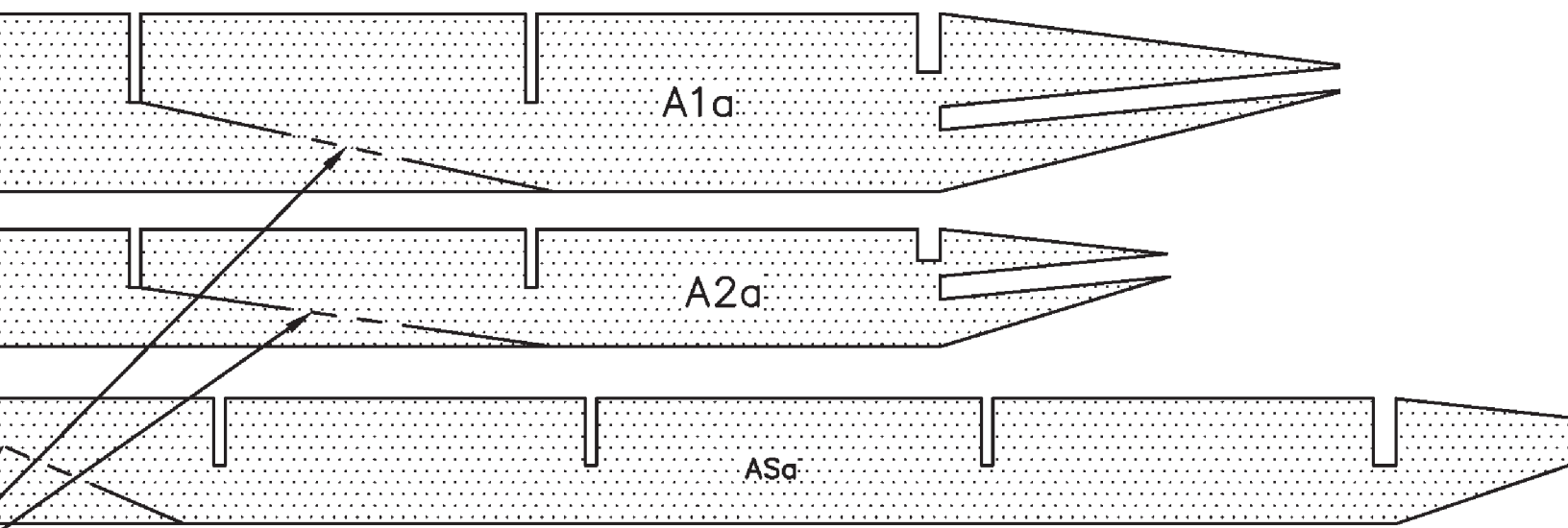
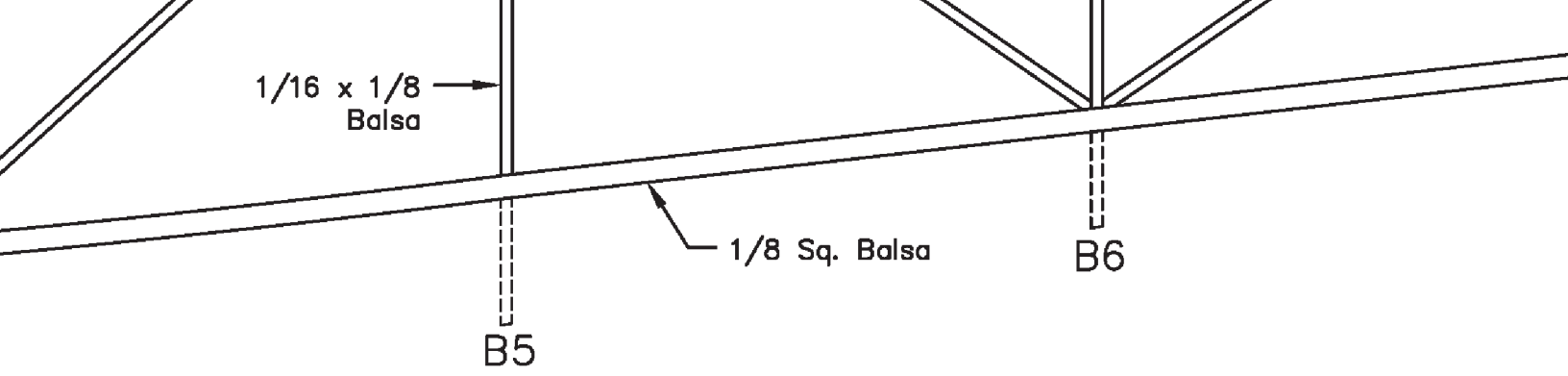


A2



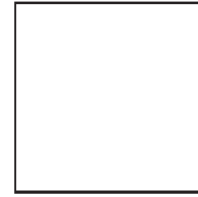


Spar Sections are Joined Here  
when Laser Cut Parts are Used



B7

1 inch reference square



Copyright 2018  and **ModelAviation**  
ACADEMY OF MODEL AERONAUTICS  
*Bringing Modelers Together*

**Copying for resale of this drawing without  
the written approval or consent of AMA  
is expressly prohibited.**

# Pober Pixie

Wing Span: 60 In.

Wing Area: 533 Sq. In.

Length: 35.5 In.

Flying Weight: 23 Oz.

Des. by: Pat Tritle for Model Aviation Magazine  
for Electric Power and 4 Channel R/C

6-27-2018

Plan No. 1108

Sheet 1 of 3