

Shim 3/32

Shim 1/16

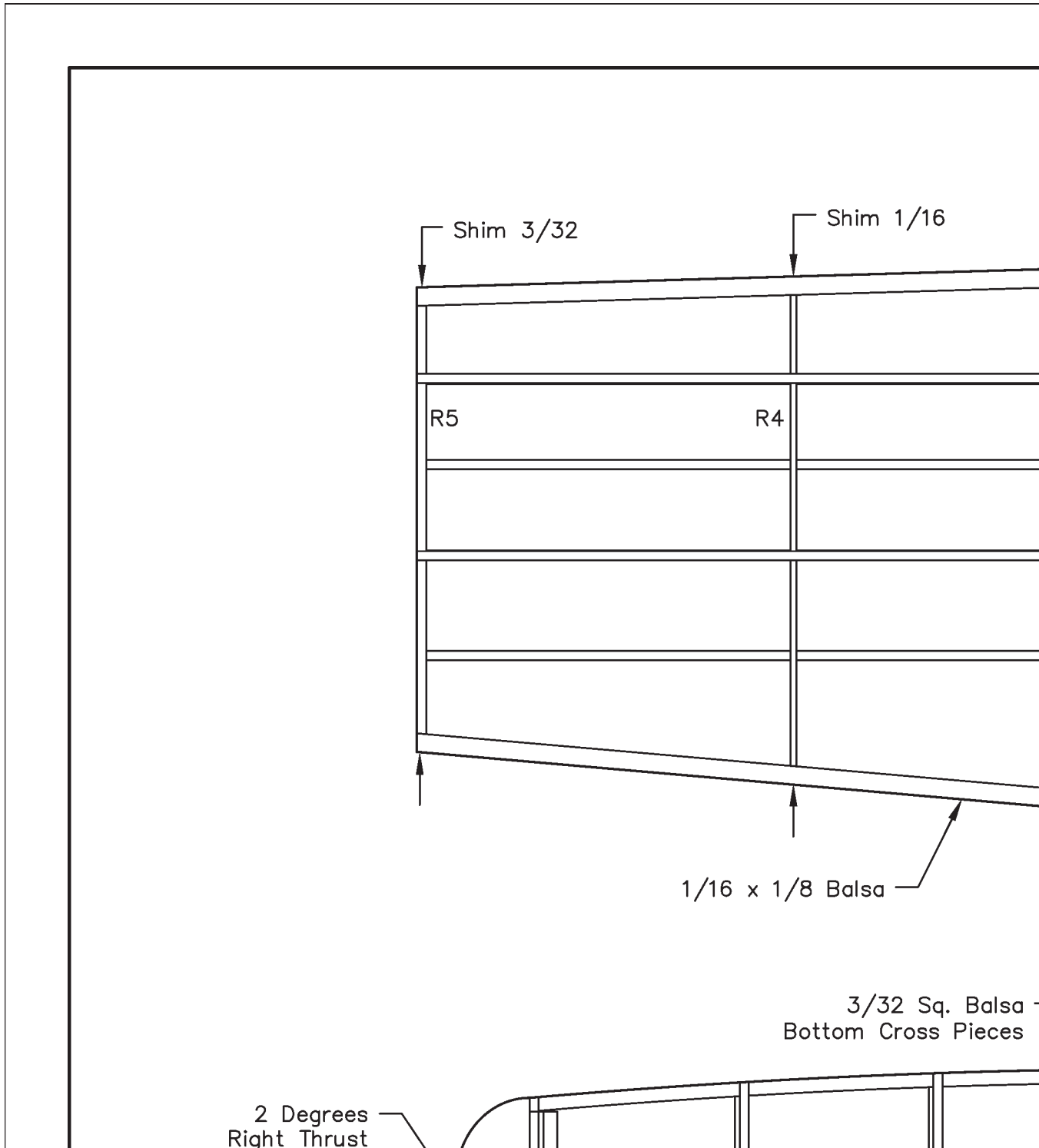
R5

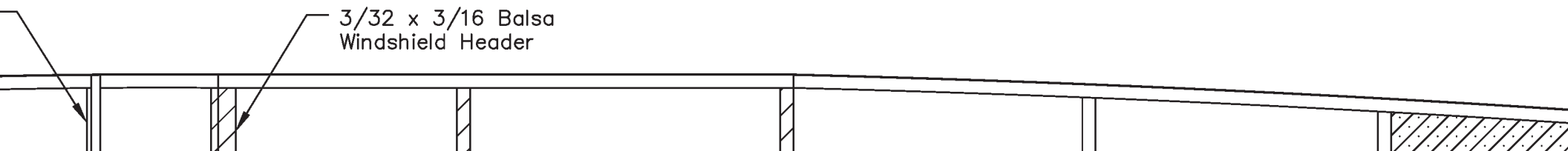
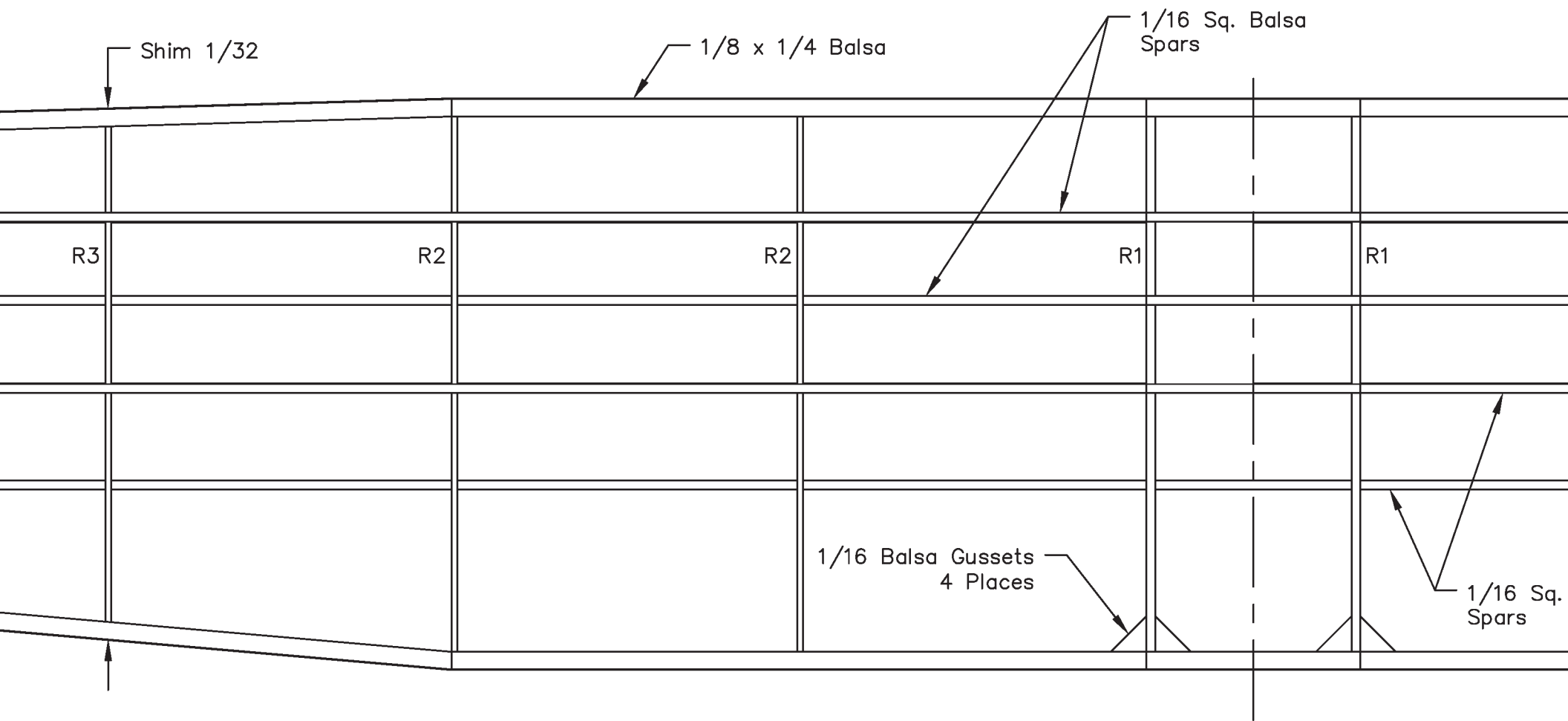
R4

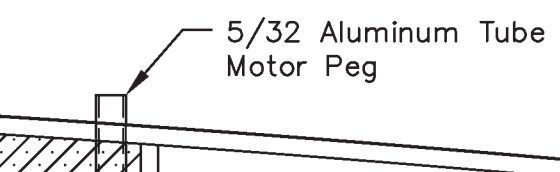
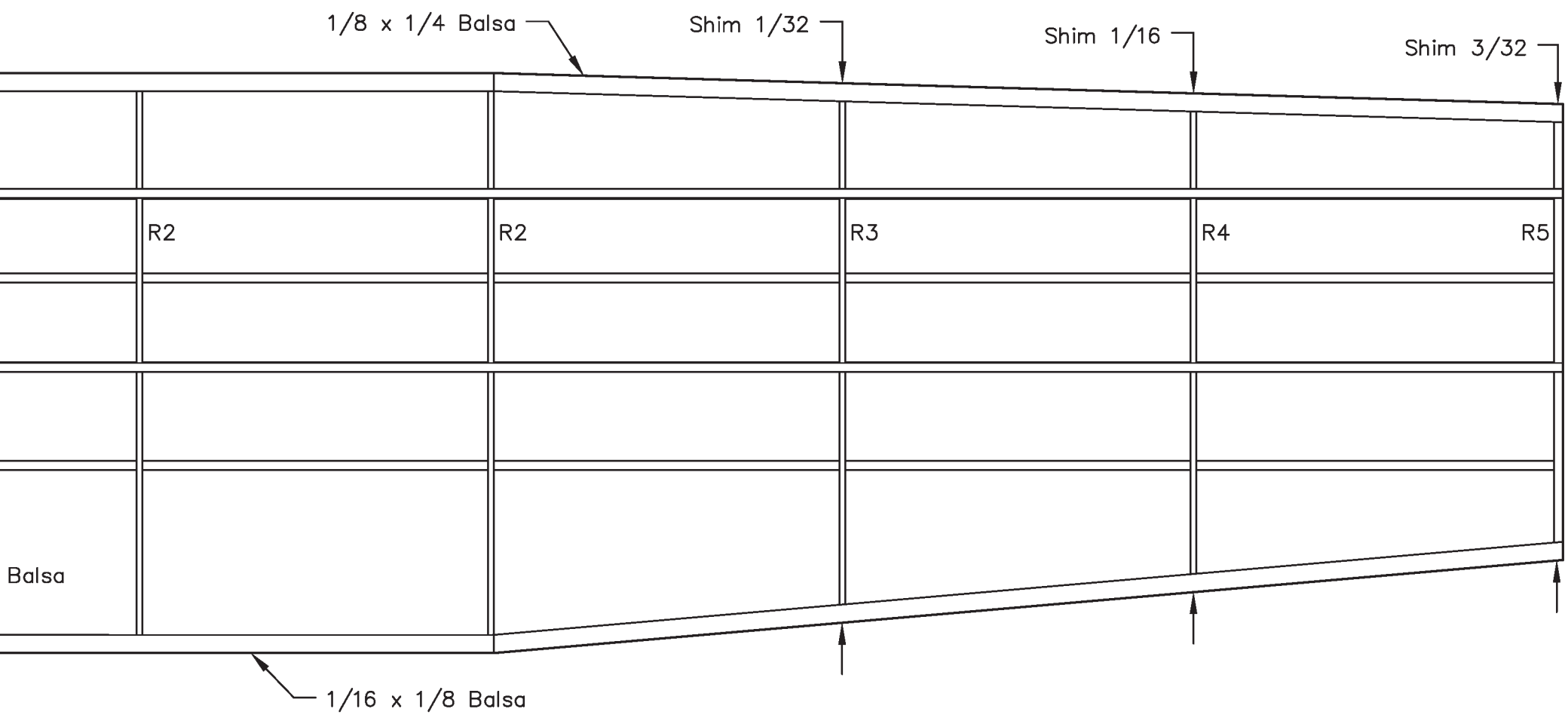
1/16 x 1/8 Balsa

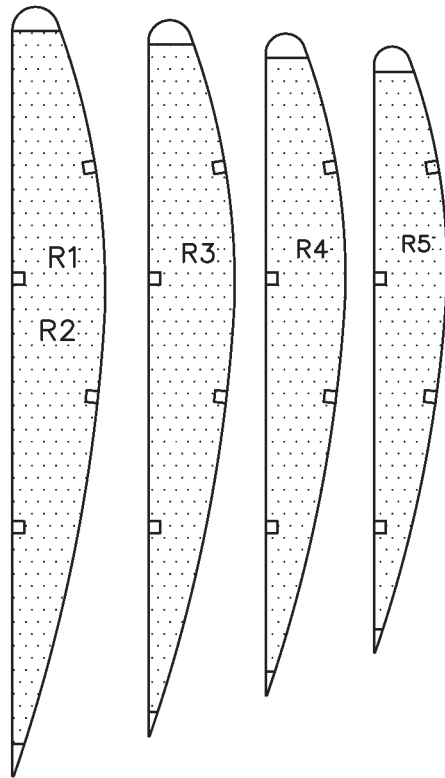
3/32 Sq. Balsa -
Bottom Cross Pieces

2 Degrees
Right Thrust

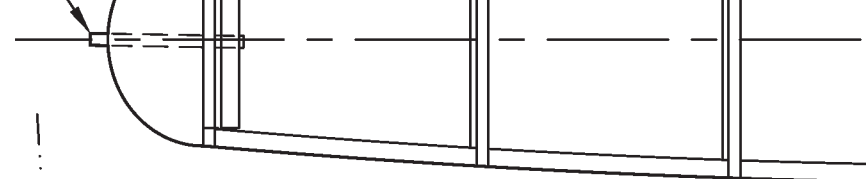








R1 & R5 are 1/16 Balsa
R2, R3, & R4 are 1/20 Balsa



Power is 1, 20" Loop
of 3/16" Tan Rubber

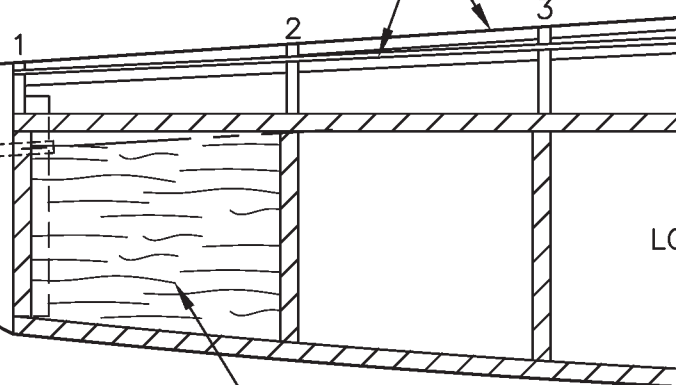
8" Propeller

Make Window
.004

Balsa nose Block

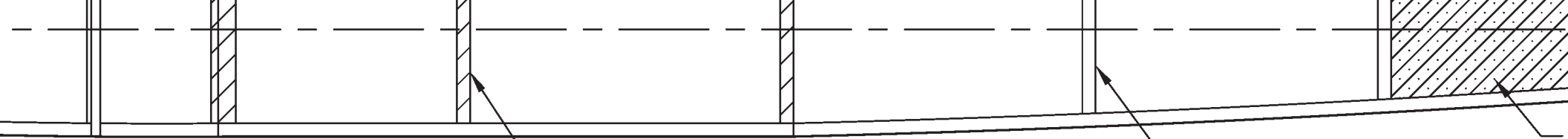
1/16 Sq. Balsa
Stringers

3 Degrees
Down Thrust



1/16 Balsa Fill
Flush with Outside

LC



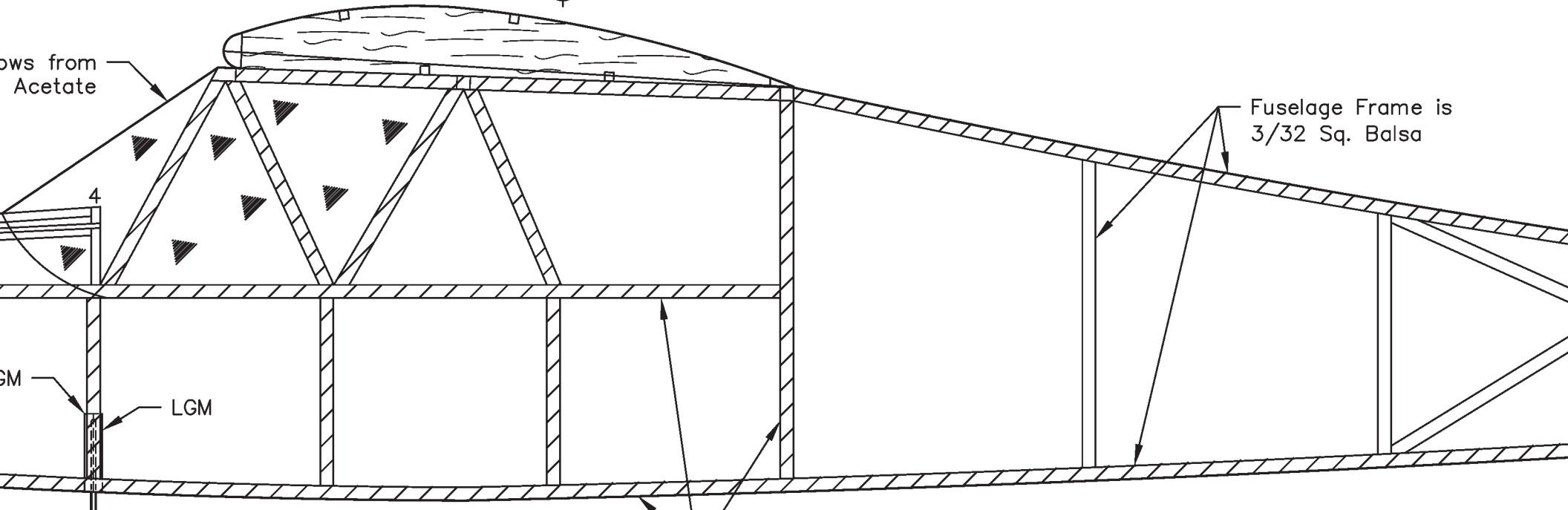
All Cross Pieces
are 3/32 Sq. Balsa

3/32 Sq. Balsa Top
& Bottom Cross Pieces

Balance Point



ows from
Acetate

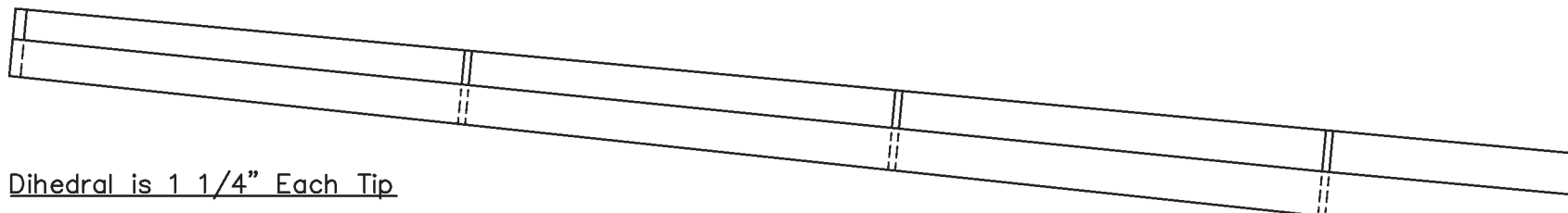
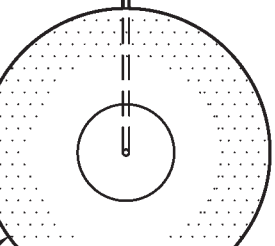


Fuselage Frame is
3/32 Sq. Balsa

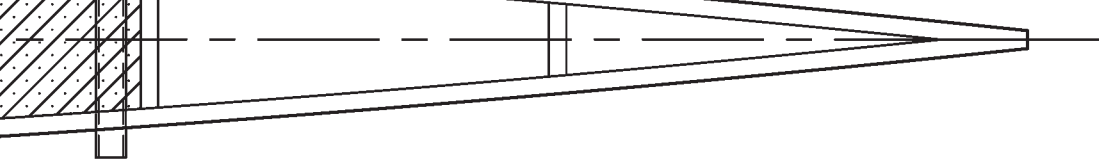
GM
LGM

Fuselage Frame is
3/32 Sq. Balsa Unless
Otherwise noted

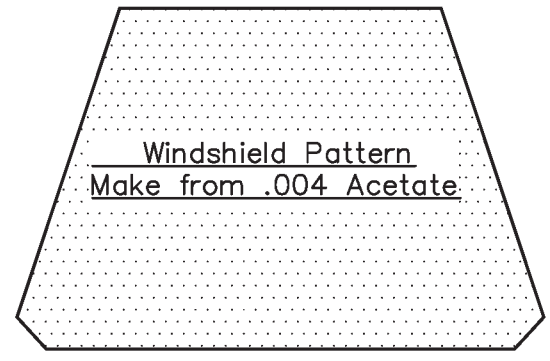
Denotes Fus
Side Fram



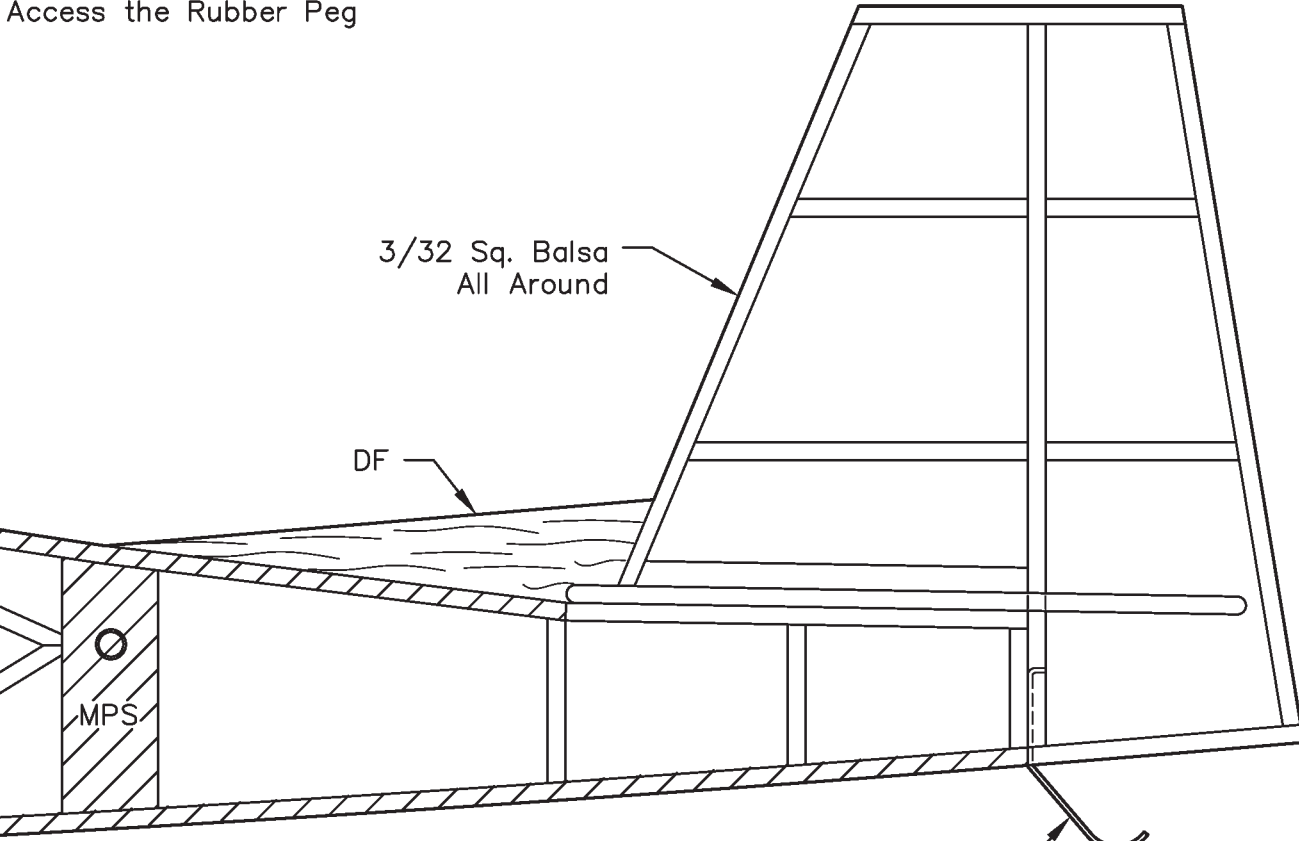
Dihedral is 1 1/4" Each Tip



Leave this Area Open
on the Bottom to
Access the Rubber Peg



Windshield Pattern
Make from .004 Acetate

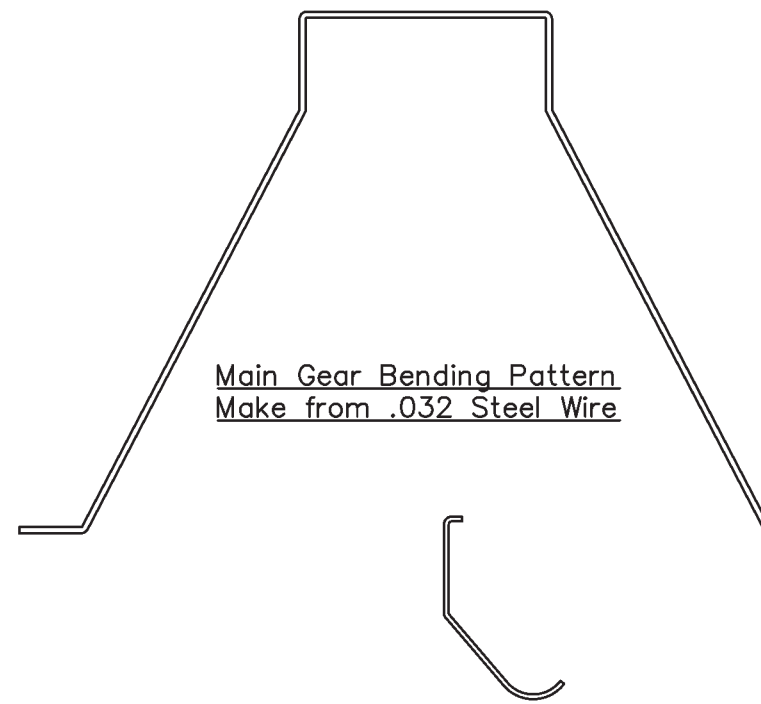


3/32 Sq. Balsa
All Around

DF

MPS

Tail Skid
.032 Steel Wire

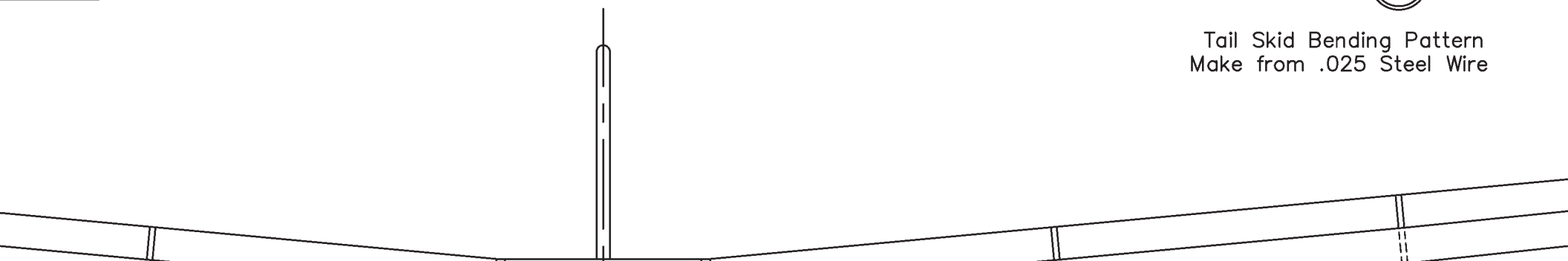


Main Gear Bending Pattern
Make from .032 Steel Wire

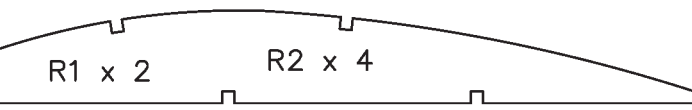
Tail Skid Bending Pattern
Make from .025 Steel Wire



selage
ne

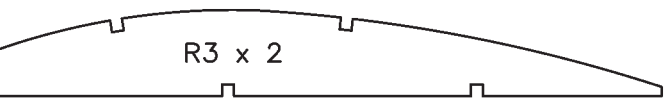


R2, R3, & R4 are 1/20 Balsa

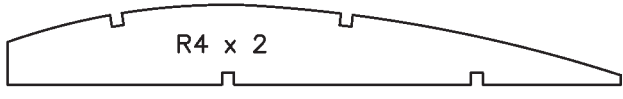


R1 x 2

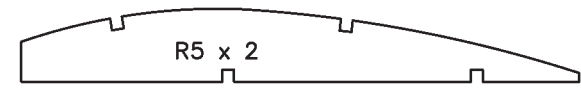
R2 x 4



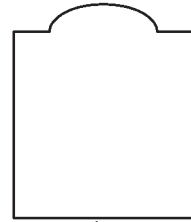
R3 x 2



R4 x 2



R5 x 2



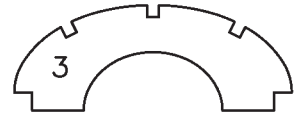
NBK 3/16 Balsa



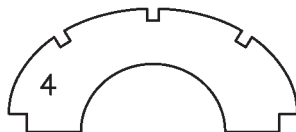
1



2

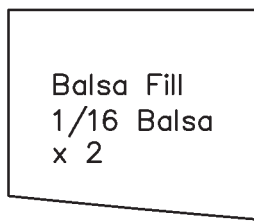


3



4

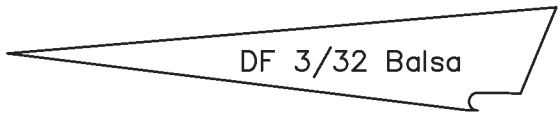
Formers 1 - 4 are 1/16 Balsa



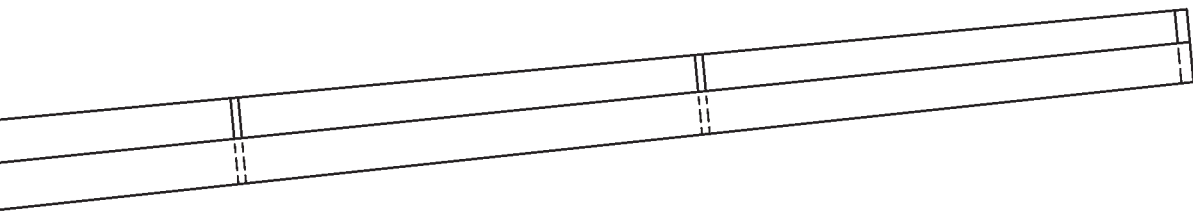
Balsa Fill
1/16 Balsa
x 2



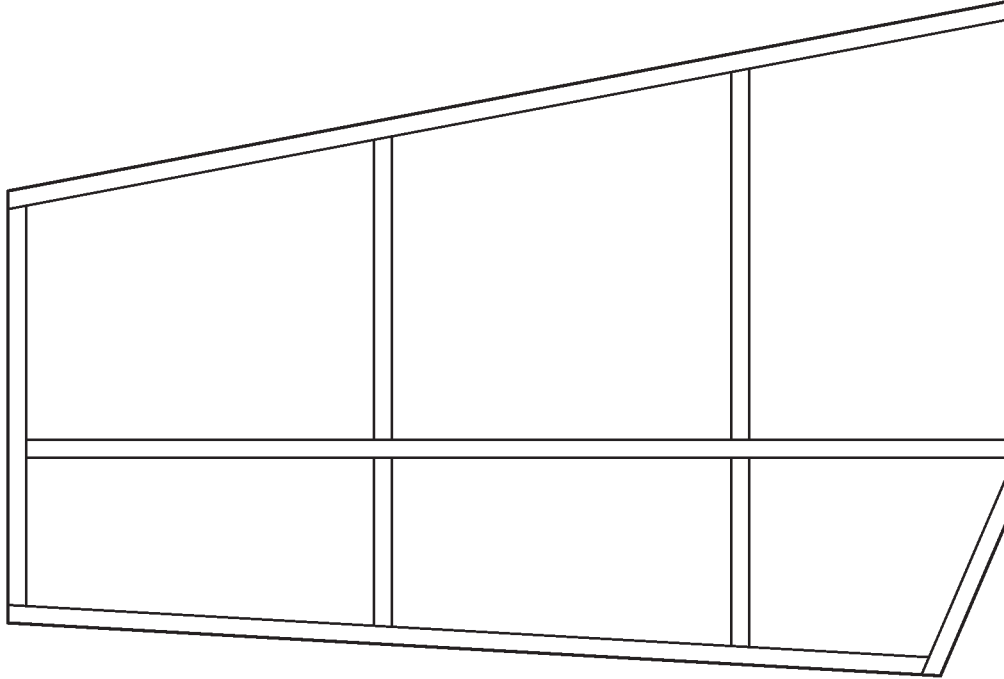
MPS 3/32
Balsa x 2

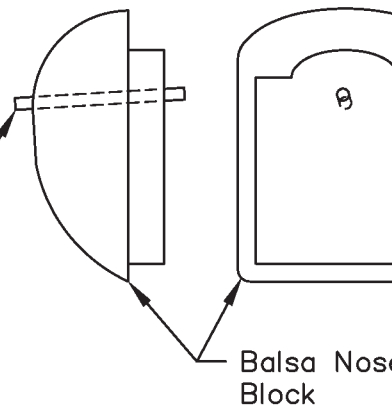
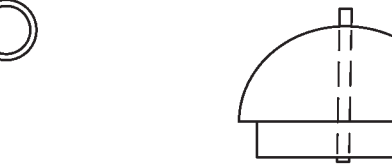
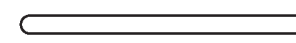
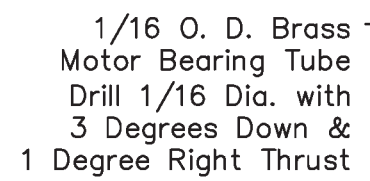
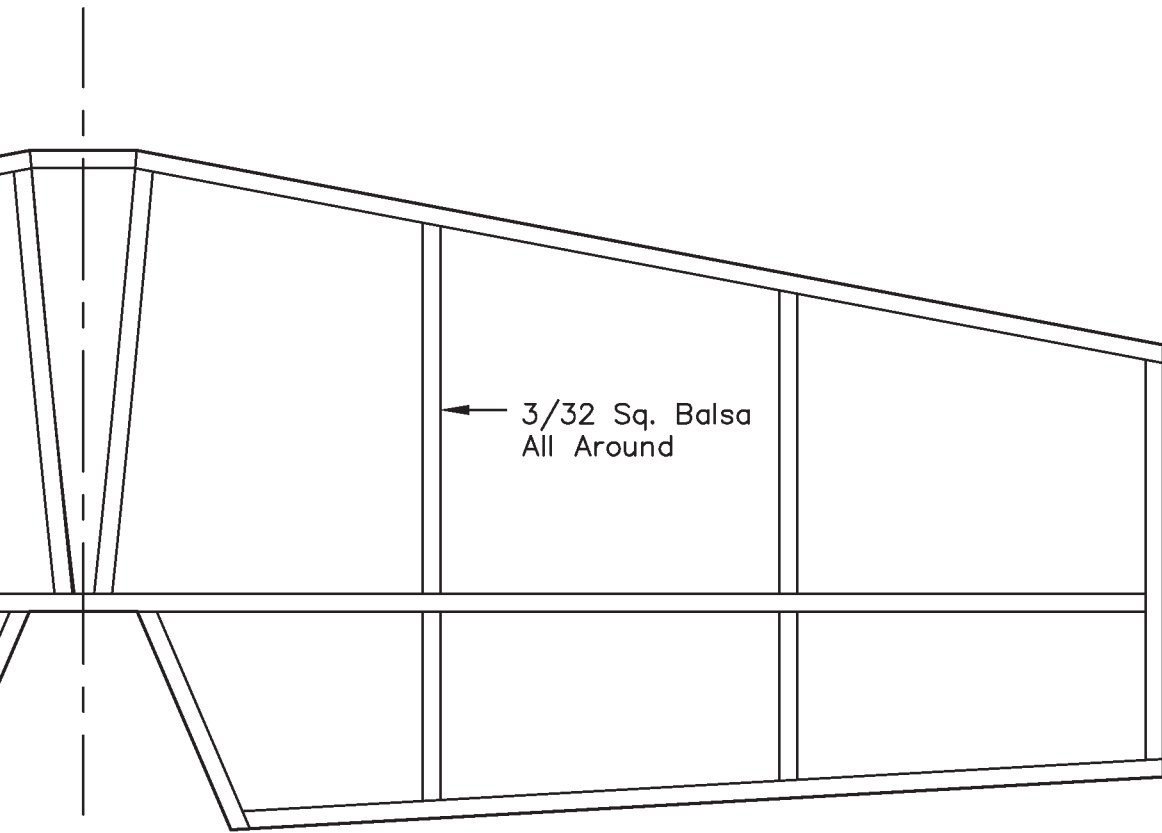


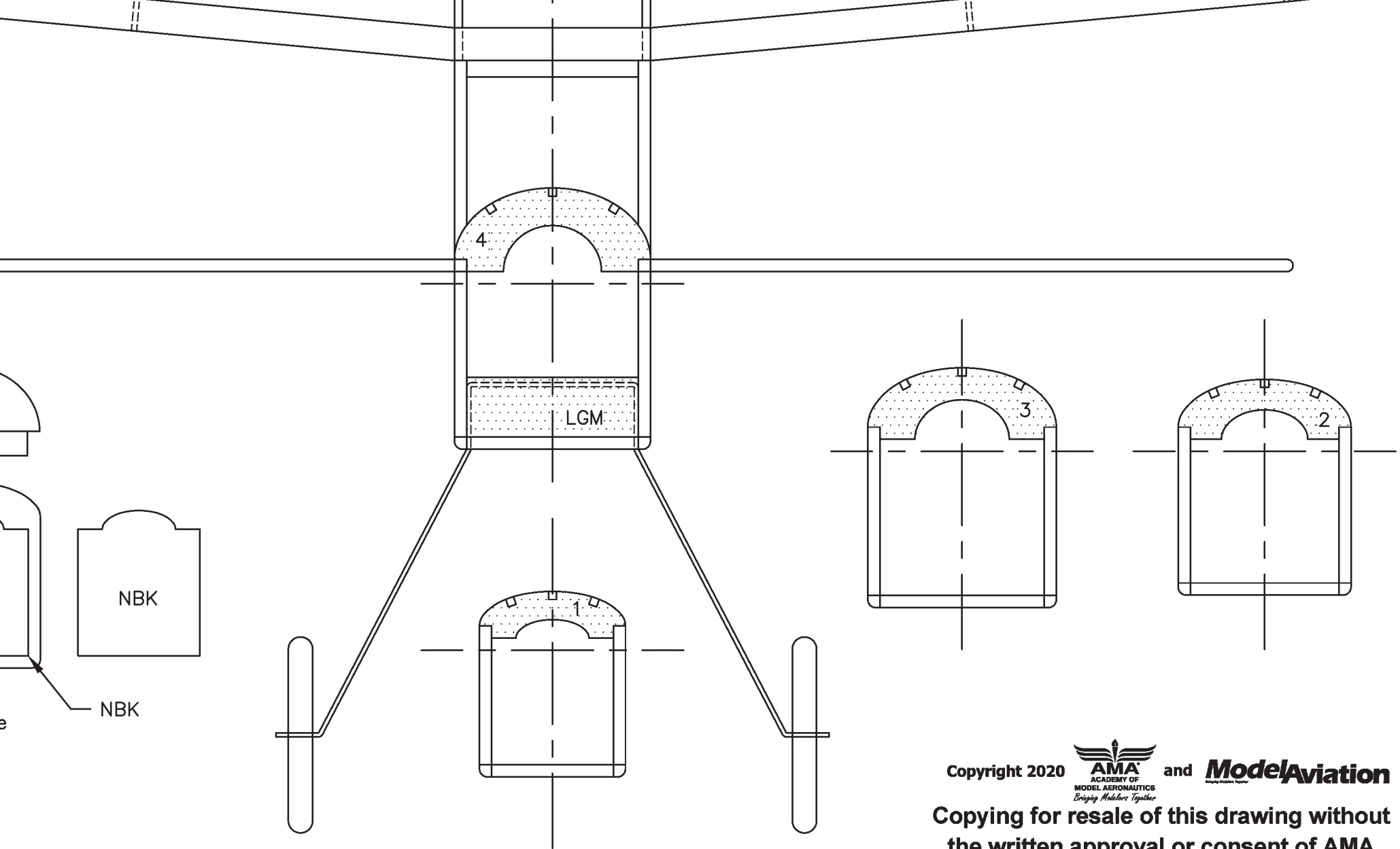
DF 3/32 Balsa



3/16 Balsa
Wheels







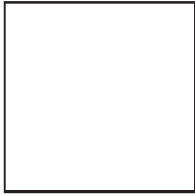
Copyright 2020  and **ModelAviation**
ACADEMY OF MODEL AERONAUTICS
Bringing Modelers Together

Copying for resale of this drawing without the written approval or consent of AMA is expressly prohibited.

Materials List

4- 1/16 Sq. x 36 Balsa
1- 1/16 x 1/8 x 36 Balsa
6- 3/32 Sq. x 36 Balsa
1- 3/32 x 3/16 x 12 Balsa
1- 1/8 x 1/4 x 36 Balsa
1/20 Sheet Balsa
1/16 Sheet Balsa
3/32 Sheet Balsa
3/16 Sheet Balsa
1- 1/2 x 1 1/4 x 1 1/2 Balsa
1- .025 Dia. x 3 Steel Wire
1- .032 Dia. x 12 Steel Wire
1/16 O. D. Brass Tube
1/16 O. D. Aluminum Tube
5/32 O. D. Aluminum Tube
1- 8" Propeller

1 inch reference square



Plan No. 1120

Whynott

Span: 26" Length: 22 3/8"

Wing Area: 97.7 Sq. In.

Flying Weight: 37.3 Grams

Designed by: Pat Tritle

Sheet 1 of 1 © 5-5-2020