

Tip Bows are 2 Laminations  
of 1/16 x 1/8 Balsa 4 Plcs.

SR3

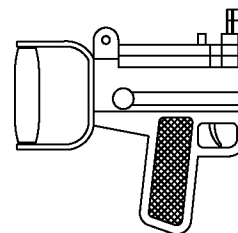
SR4

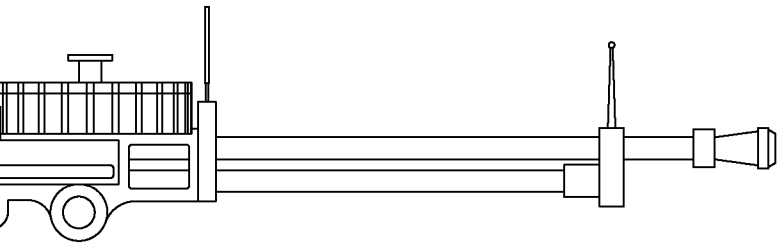
SR2

ER1

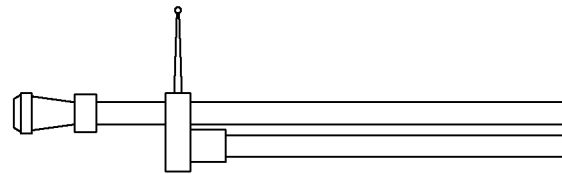
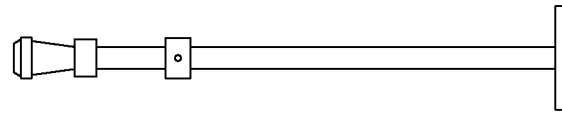
1/8 Sq. Balsa

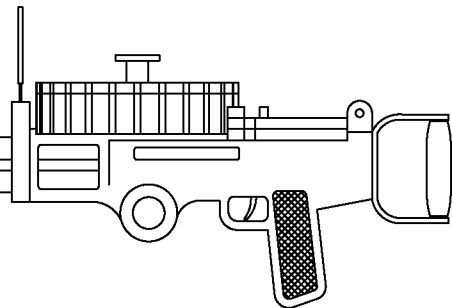
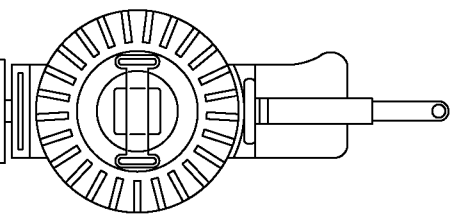
1/8 Balsa  
Shims

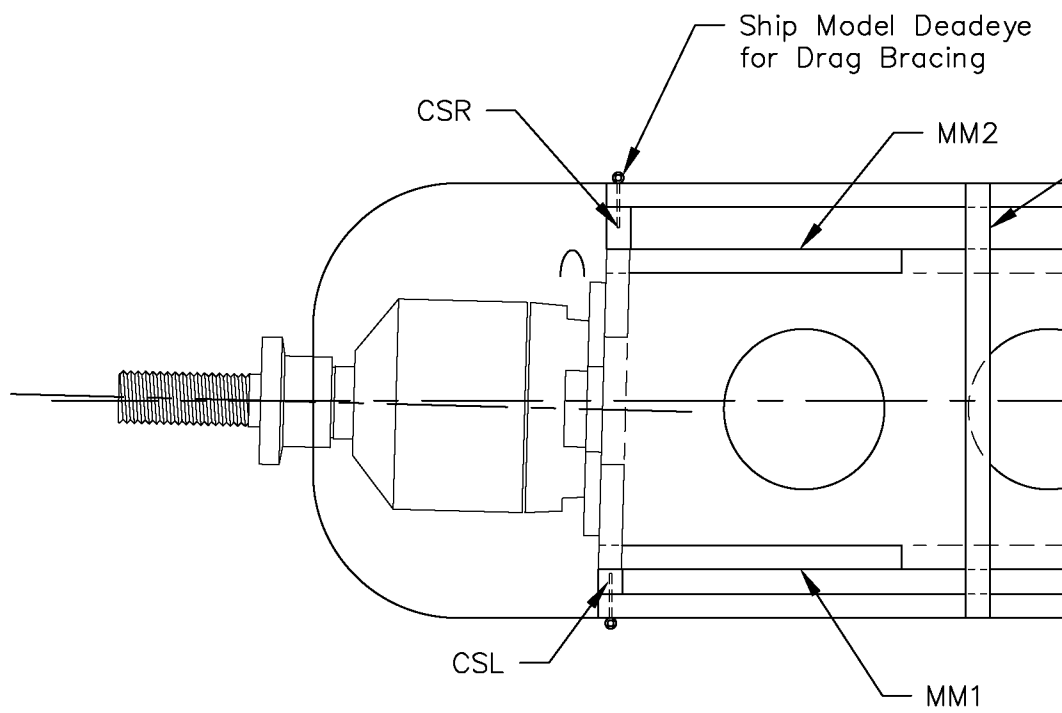




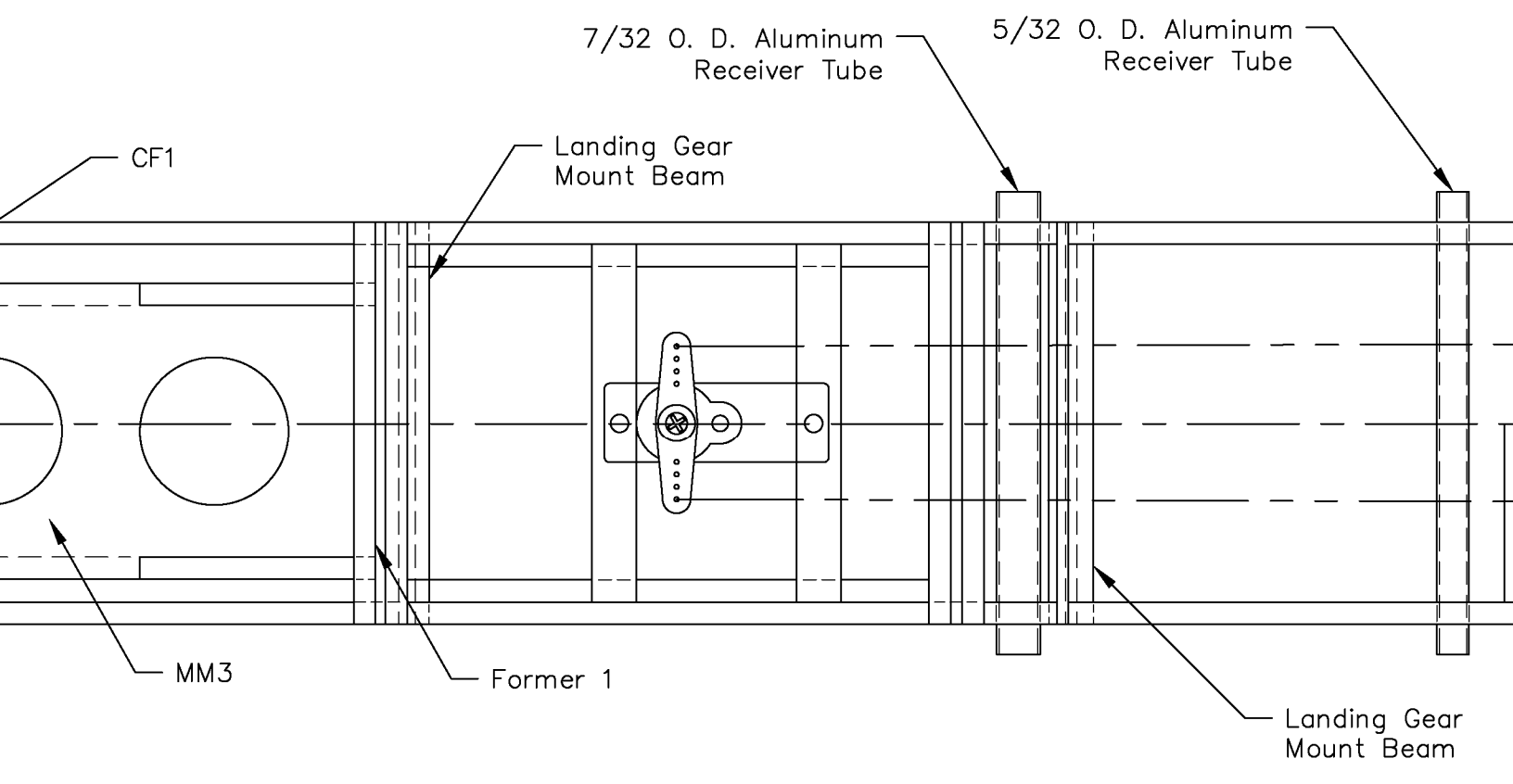
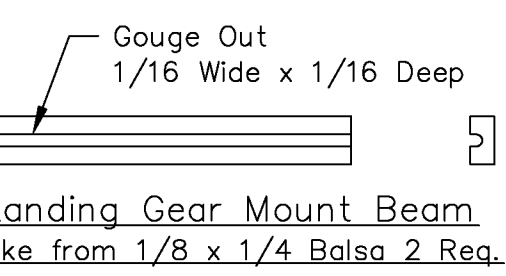
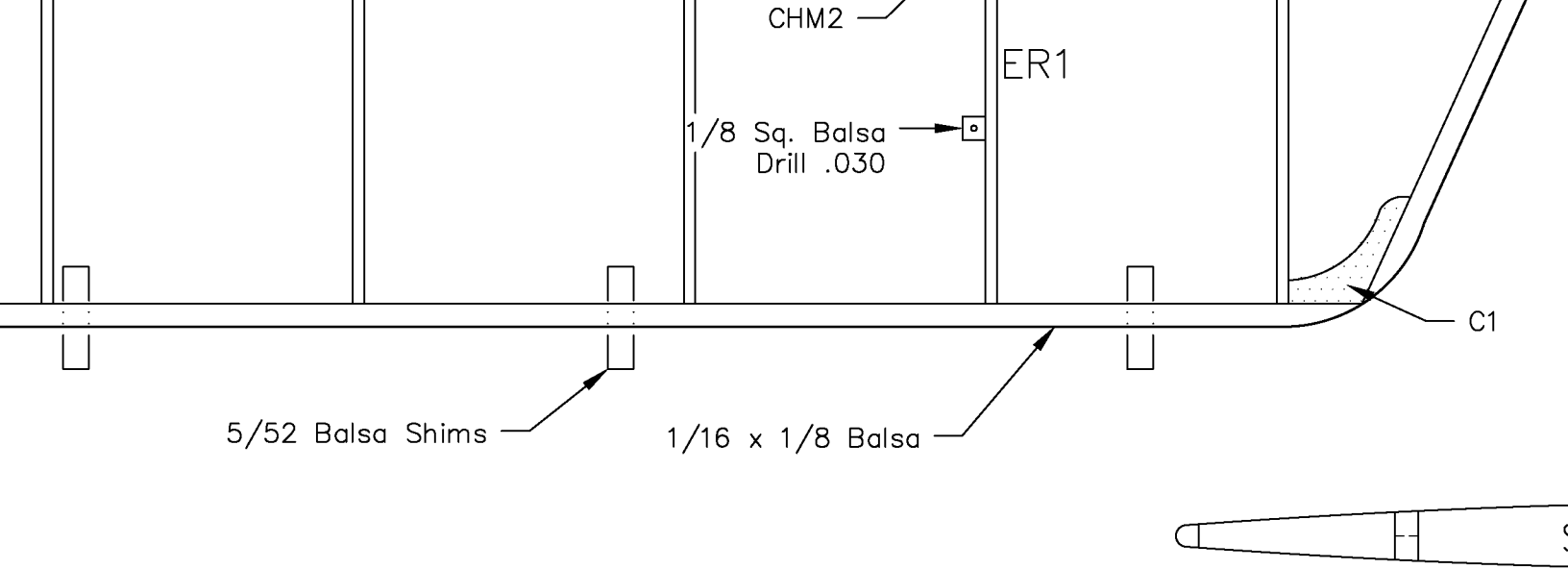
Lewis Gun Details



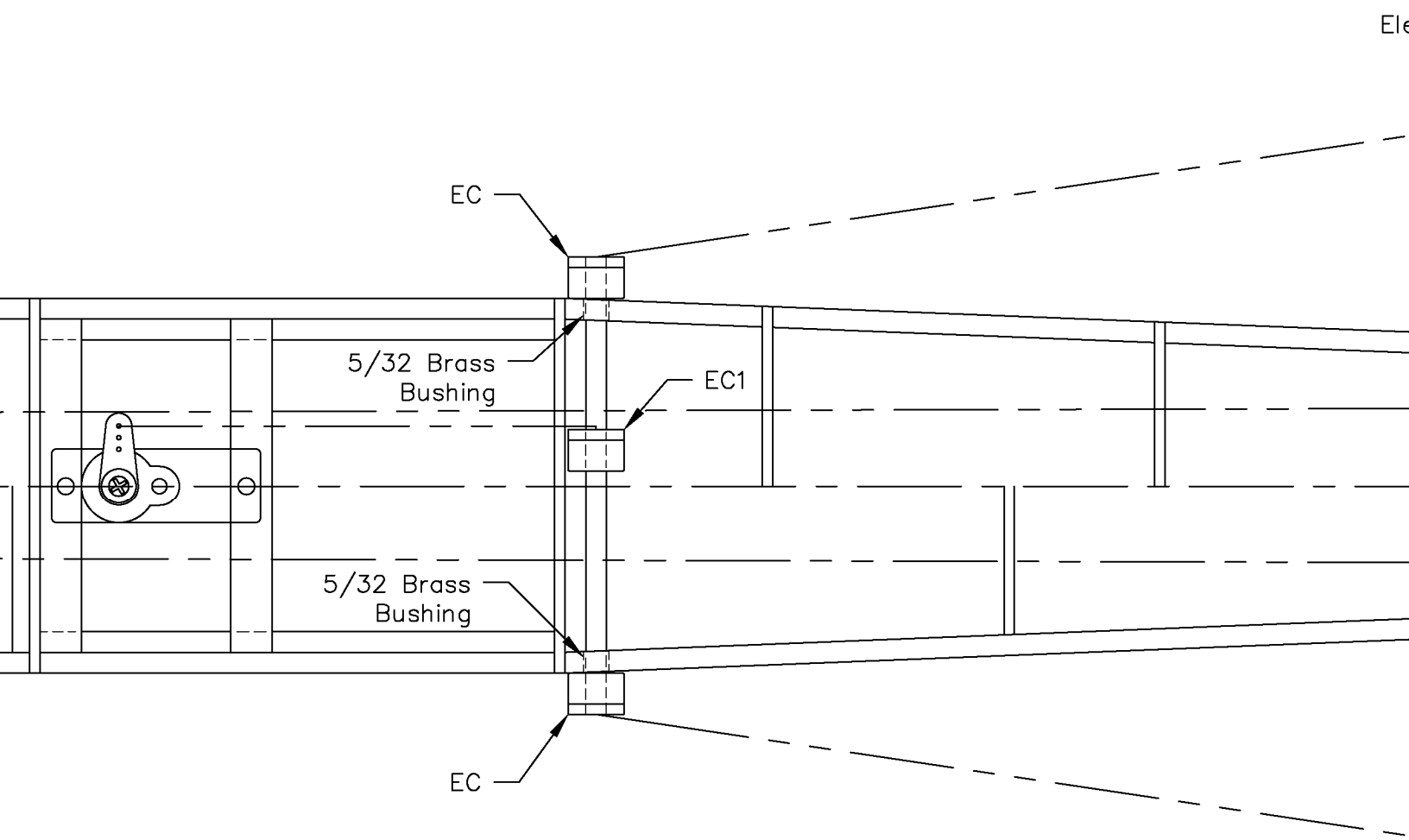
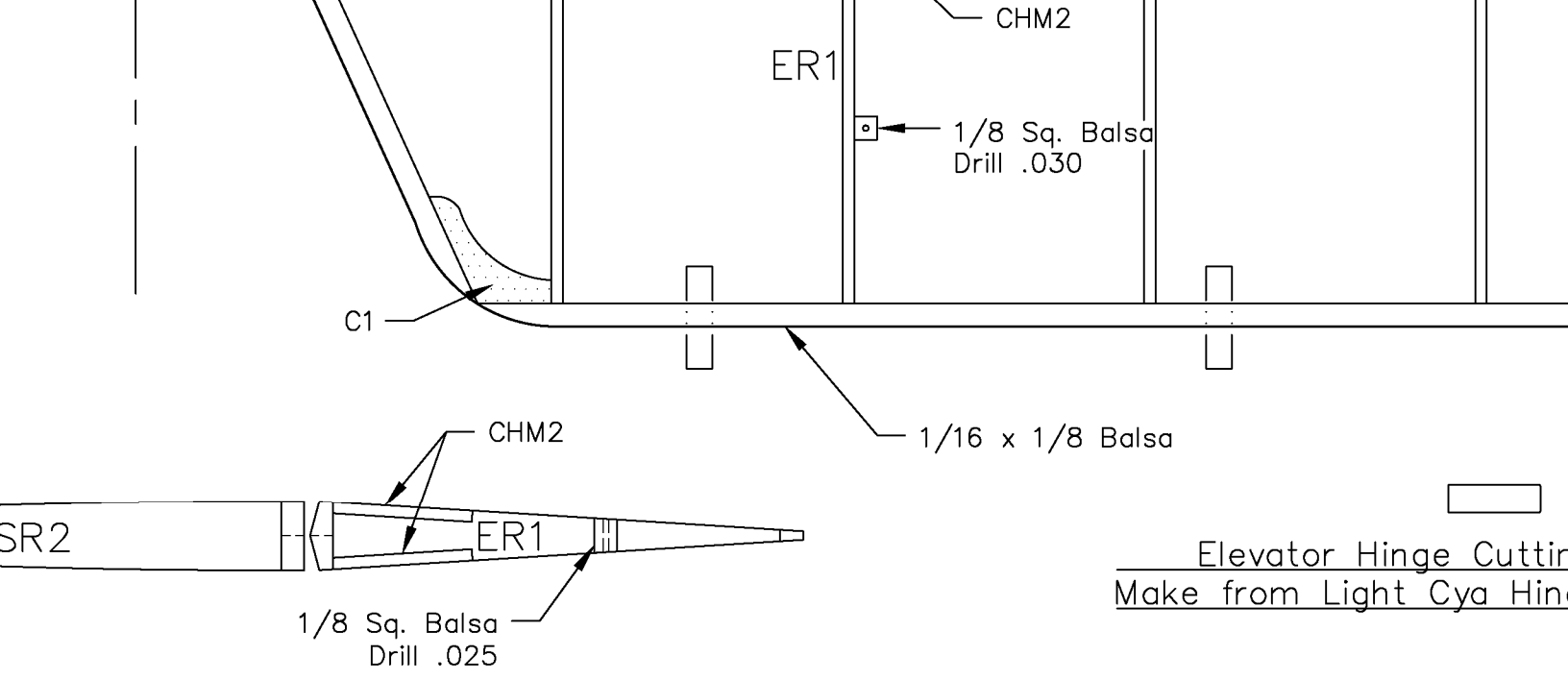


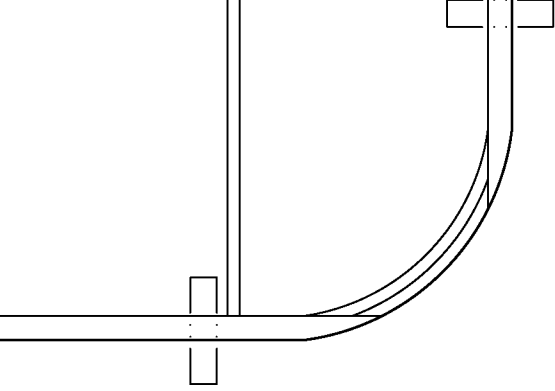


Ma

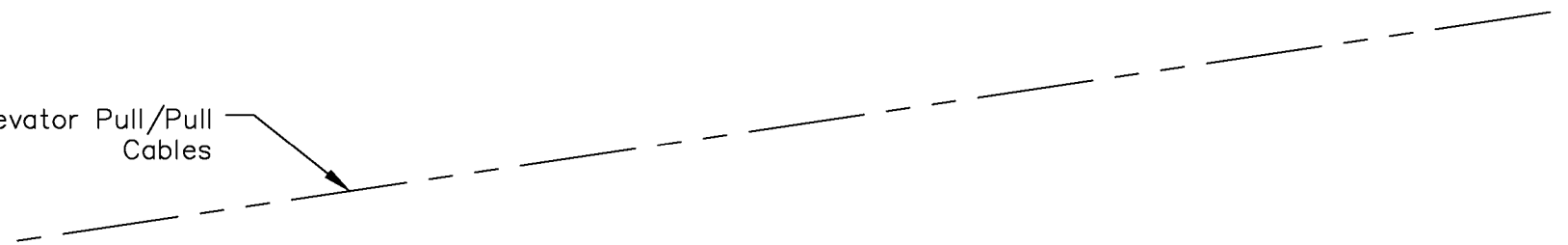








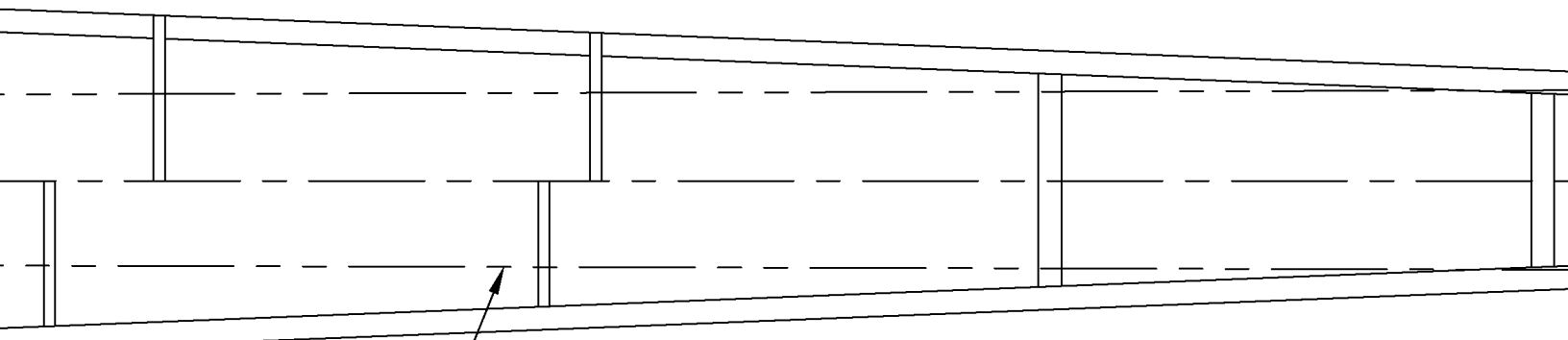
ing Pattern  
ge Stock 4 Req.



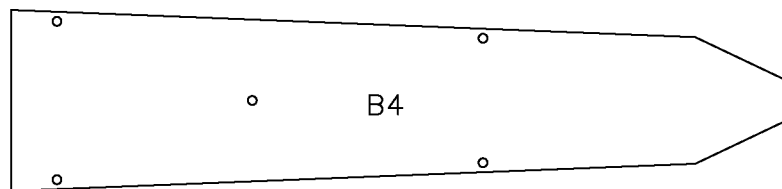
Elevator Pull/Pull  
Cables



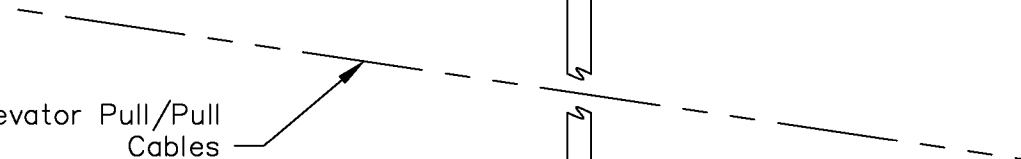
B3



Rudder  
Pull/Pull Cables

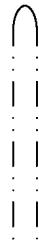
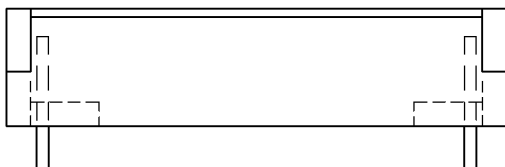
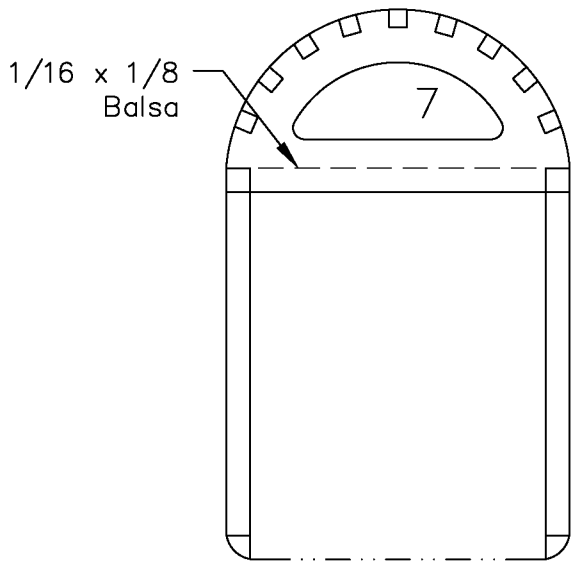


B4

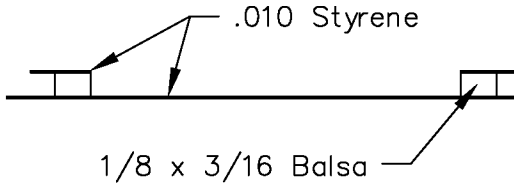
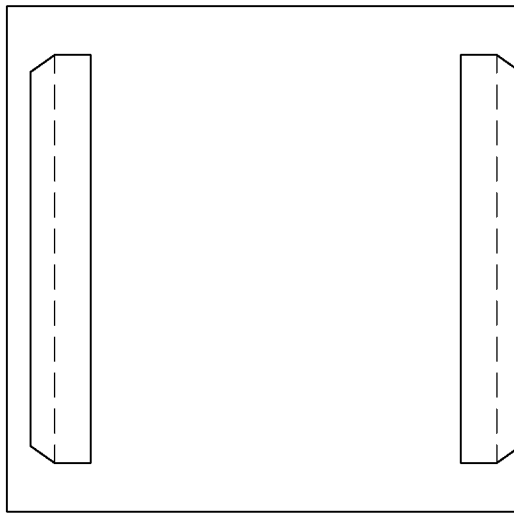


Elevator Pull/Pull  
Cables





Lower Access Hatch Assembly

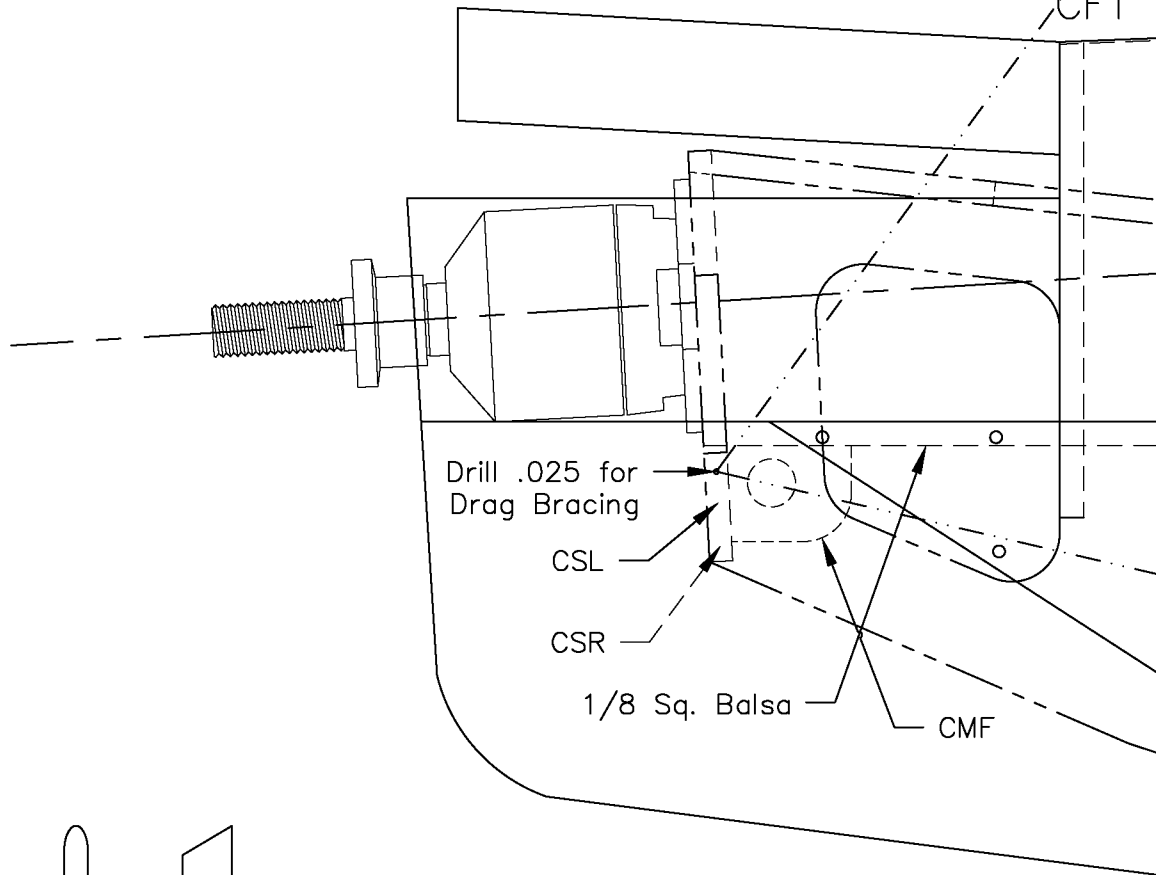


Wing Alignment Jig

Drag Bracing

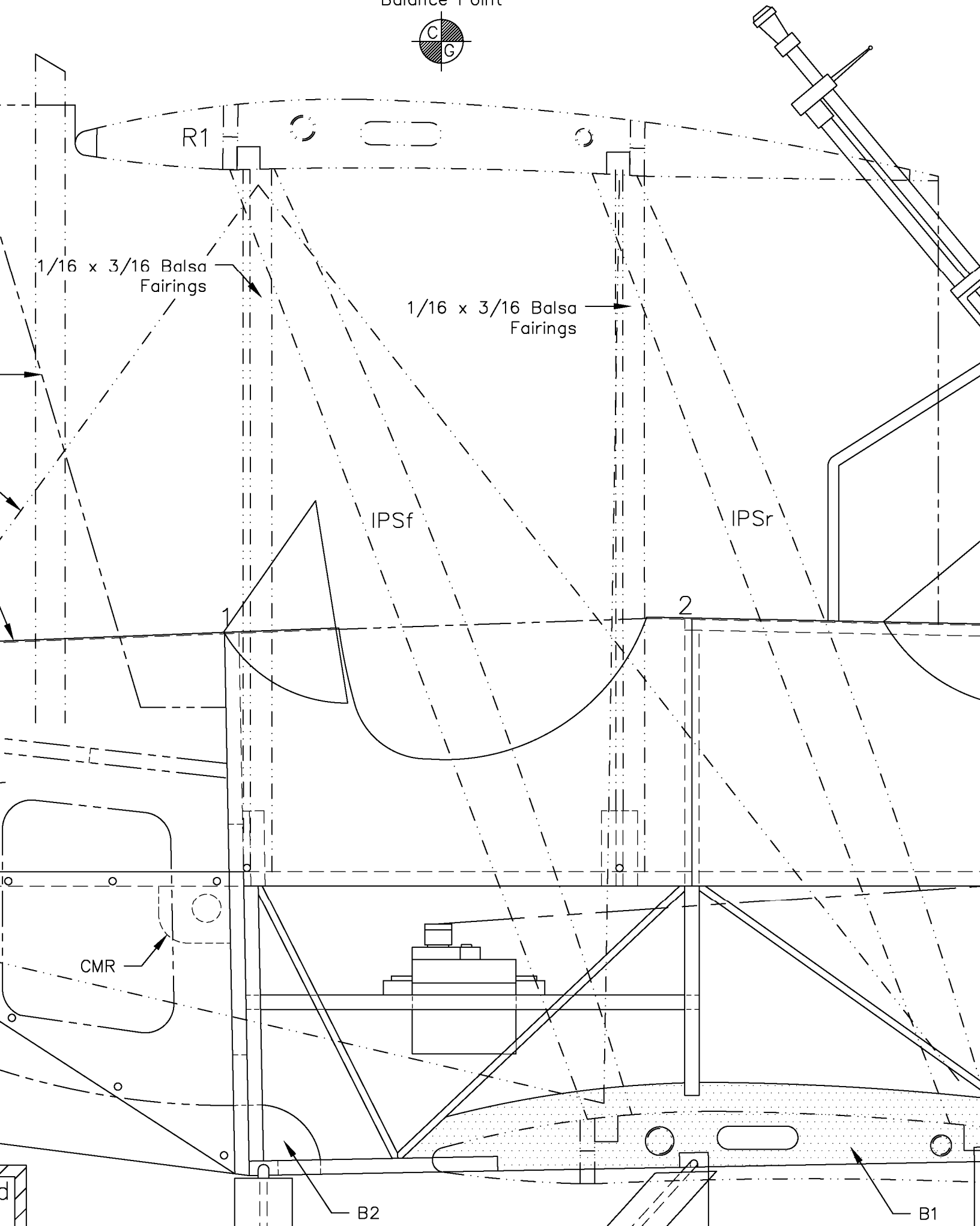
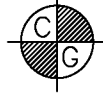
Forward Cowl Fairing

CF1

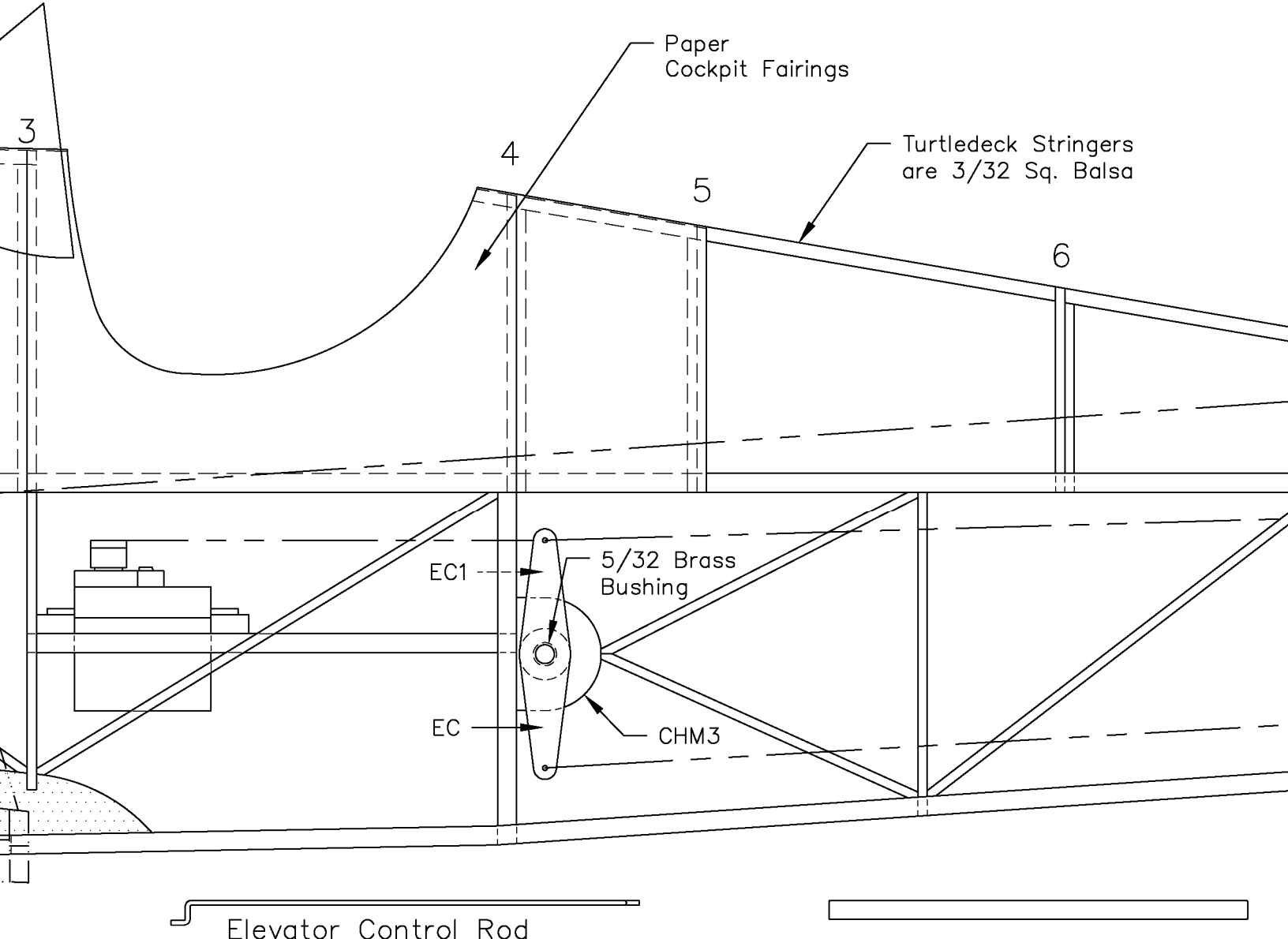
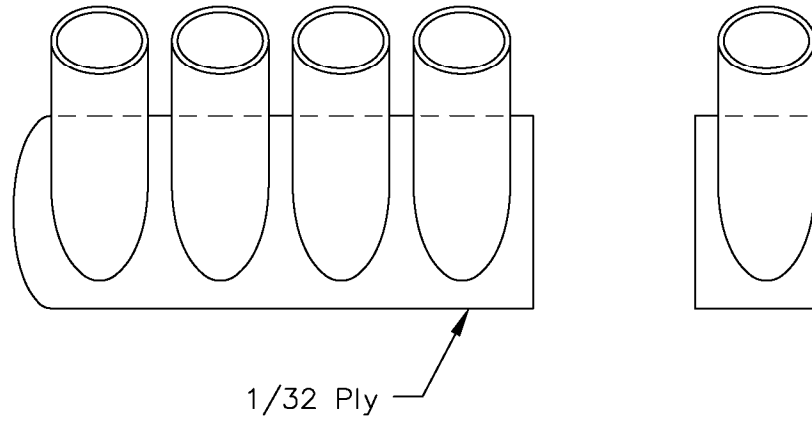
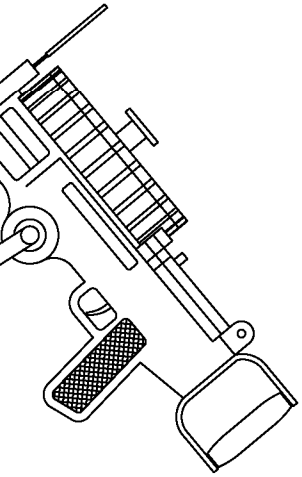


Note: Lower Cowl is Retained with  $1/16 \times 1/4$  Rare Earth

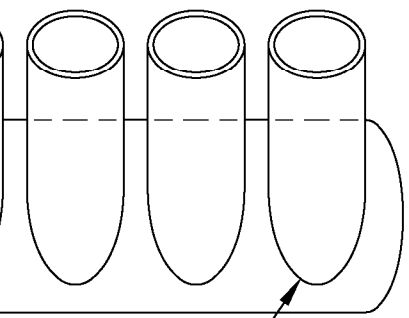
Balance Point



Note: The Dummy Engine is made up from .54" O.D. the Vac-Formed Plastic Cylinder Heads, 1/16" Aluminum and 1/4" Triangle Stock. The Cylinder Assemblies glued with MM1 & MM2, flush with Former CF1

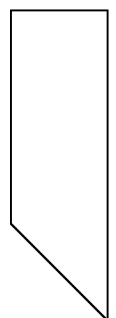
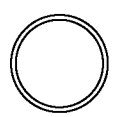


D. Rocket Tube,  
um Wire, 1/32 Ply  
ue to the sides of



.54" Dia.  
Rocket Tube

Exhaust  
Stacks



3/32 Aluminum  
Wire Pushrods

1/4 Balsa  
Tri-Stock

1/32 Ply

Vac-Formed  
Cylinder Heads

Rocket Tube  
Cylinders

Rudder Pull/Pull  
Cables

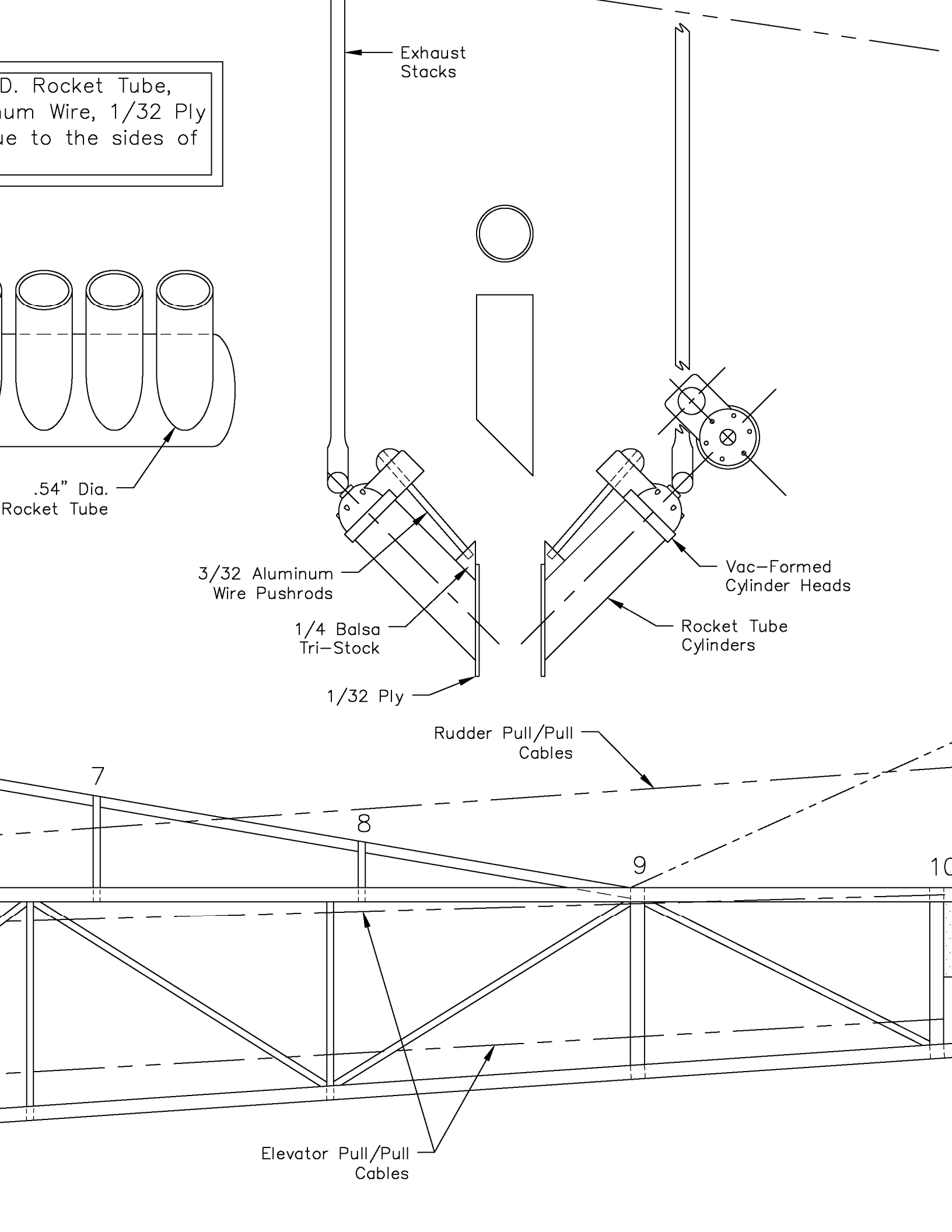
7

8

9

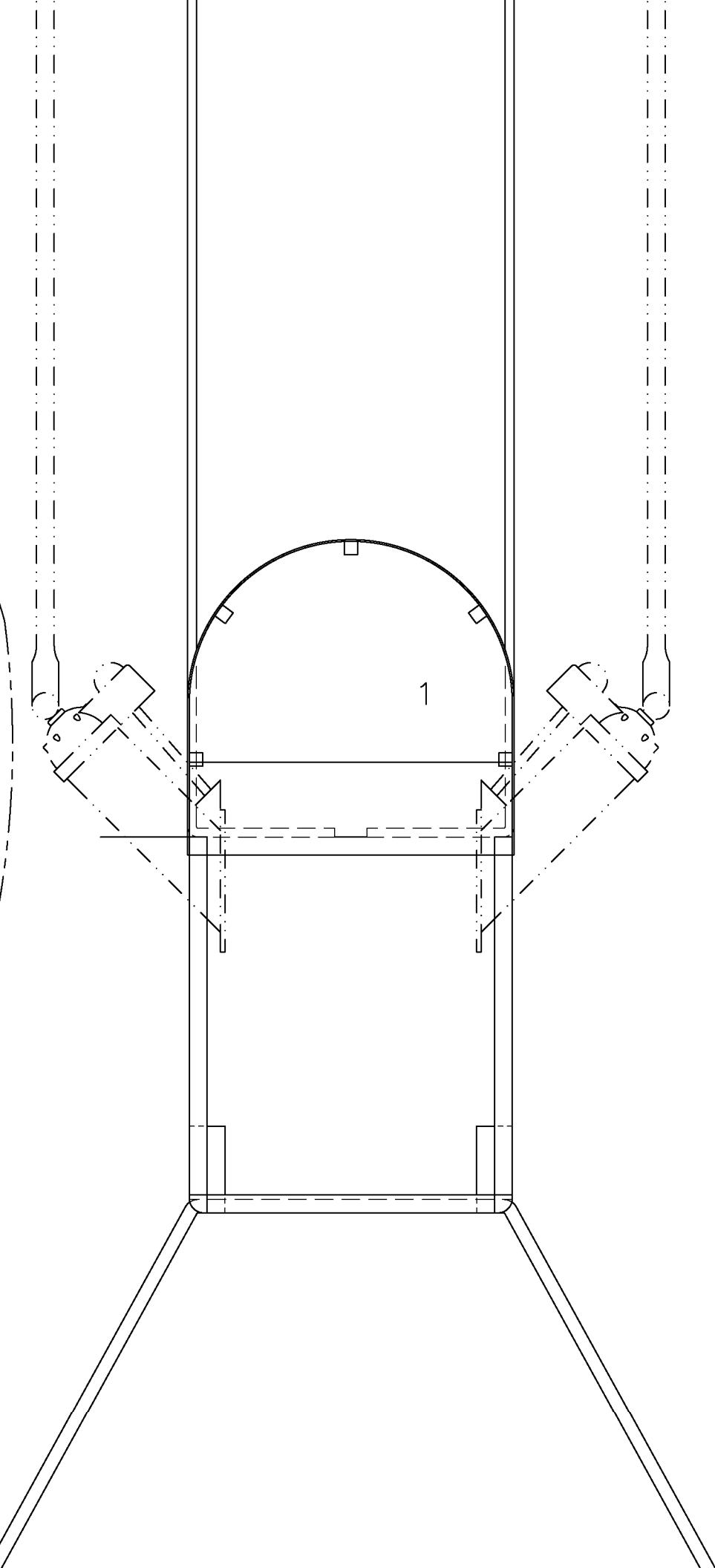
10

Elevator Pull/Pull  
Cables



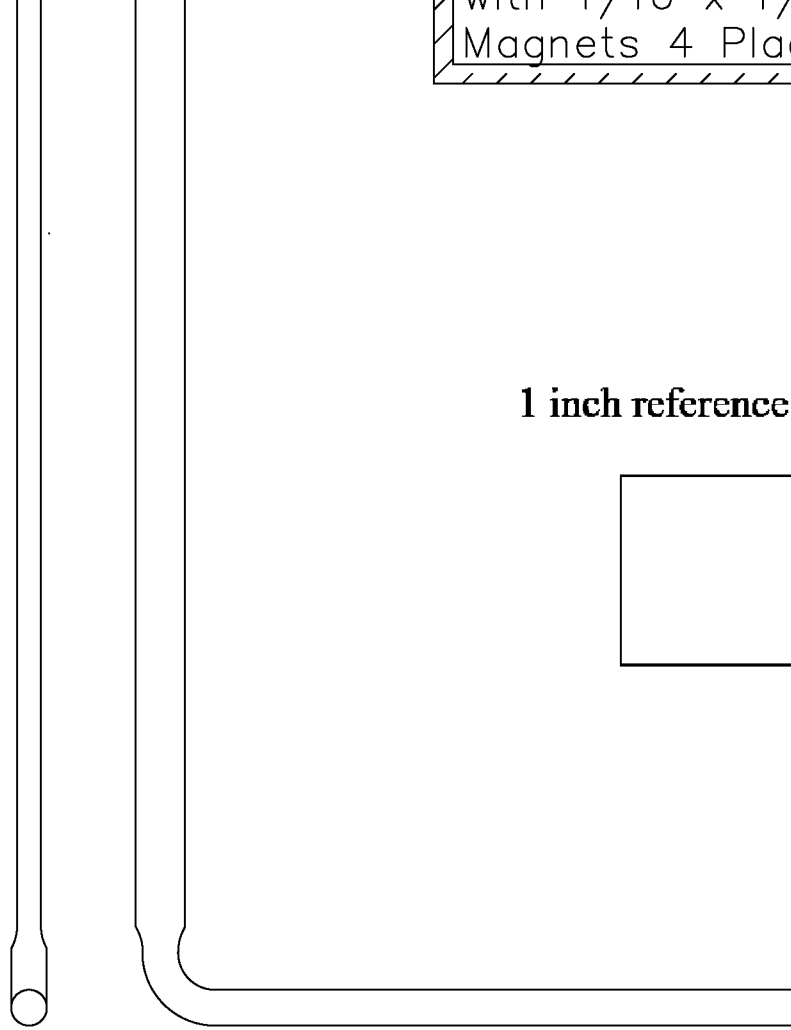
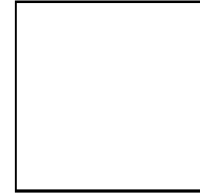




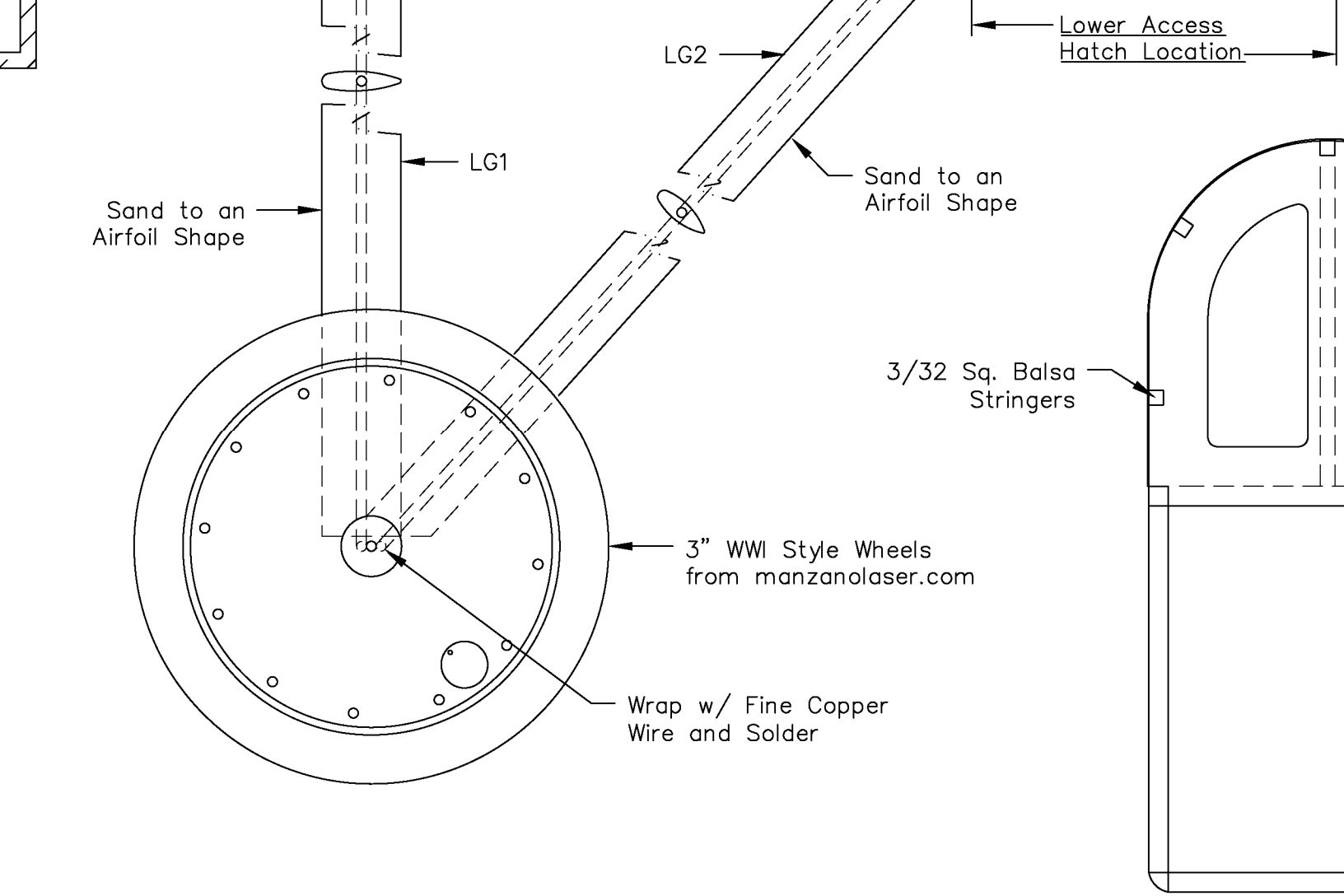


with 1/16" x 1/16" Rare Earth  
Magnets 4 Places

1 inch reference square

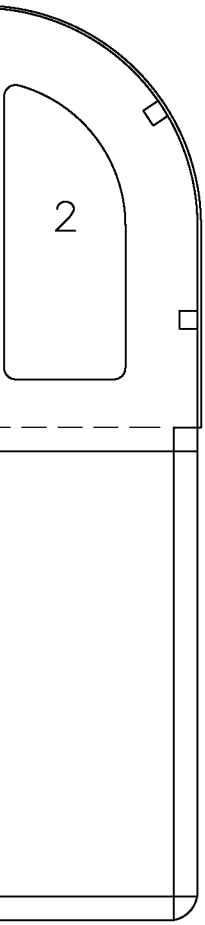


Exhaust Stack  
Make from milliput or Carve  
from Bass Wood 2 Req.

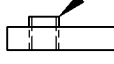


.032 Steel Wire Z-Bend Both  
Ends Offset 90 Degrees

Elevator Control Rod  
Make from 1/8" Aluminum Wire

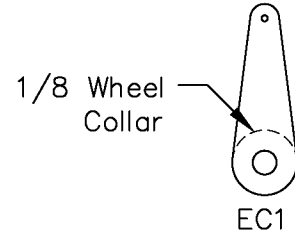
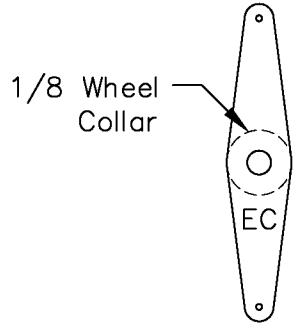


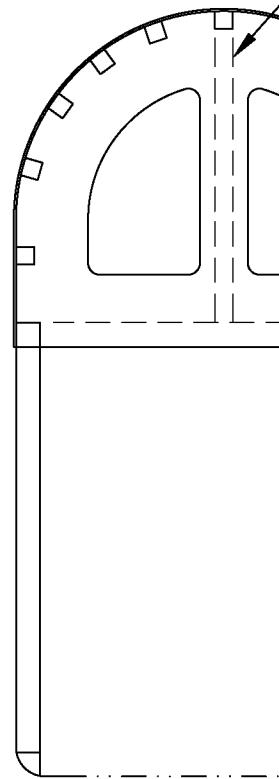
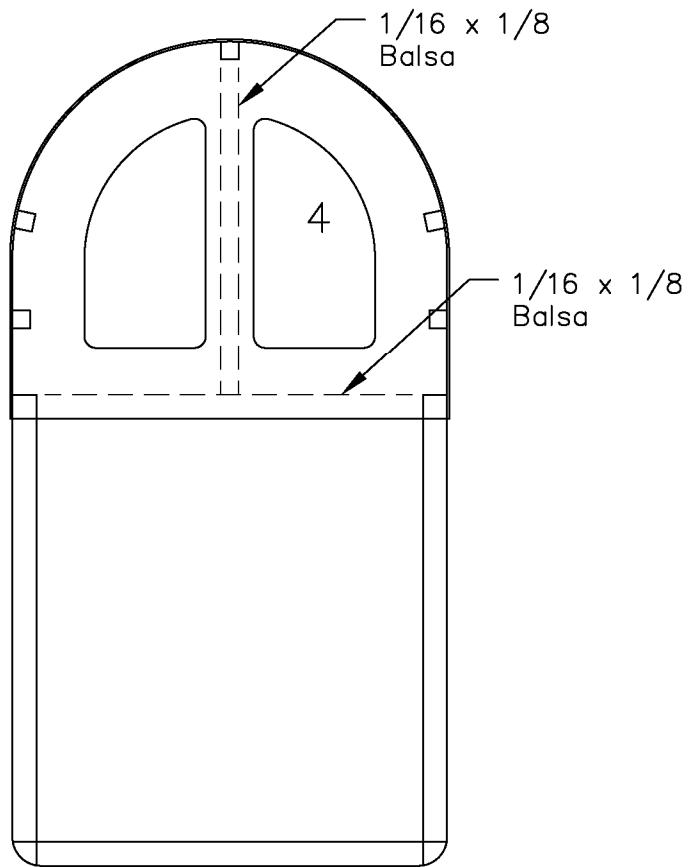
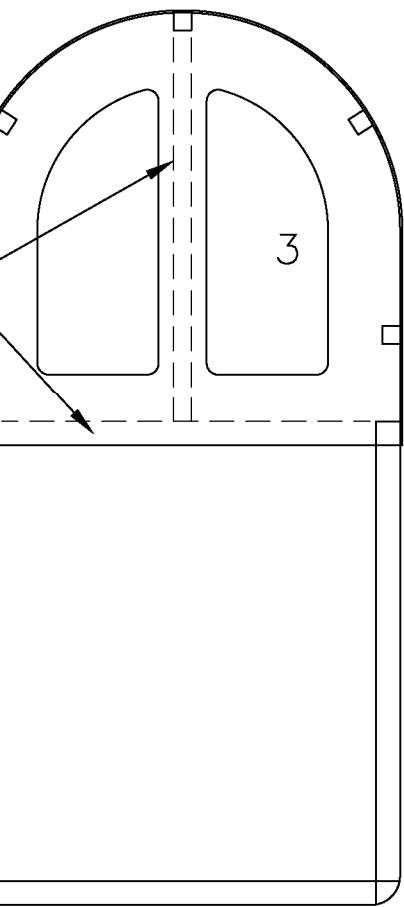
5/32 O.D.  
Brass Bushing

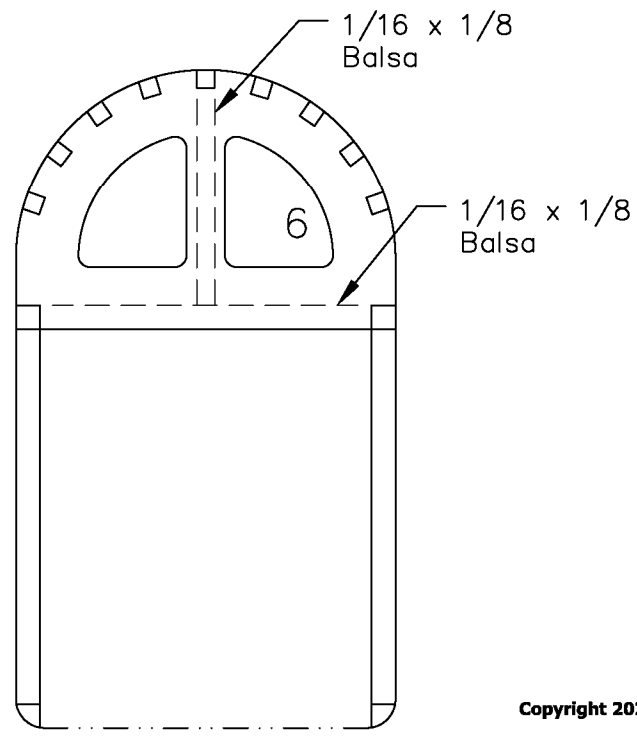
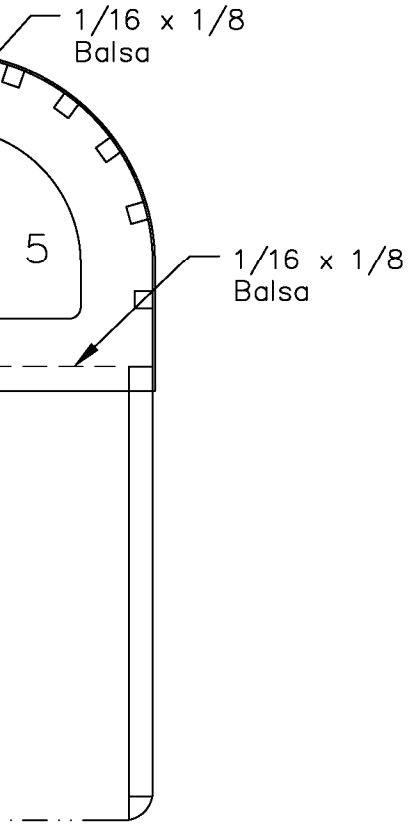
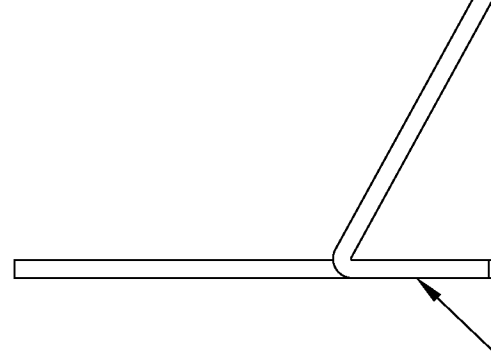
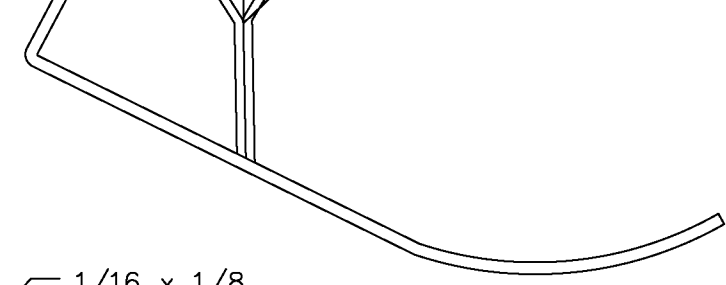



1/16 x 1/8 Balsa  
Stiffeners


Elevator Control Linkage







Copyright 2023  and **ModelAviation**  
Copying for resale of this drawing without  
the written approval or consent of AMA  
is expressly prohibited.



Wrap with Fine  
Copper Wire and  
Solder

**Plan No.1139**

R.A.F. B.E. 2c

Span: 50"

Length: 39"

Wing Area: 725 Sq. In.

Flying Weight: 26.5 oz.

Wing Loading: 5.25 Oz./ Sq. Ft.

Designed by: Pat Tritle

Sheet 1 of 3 © 6-23-2021