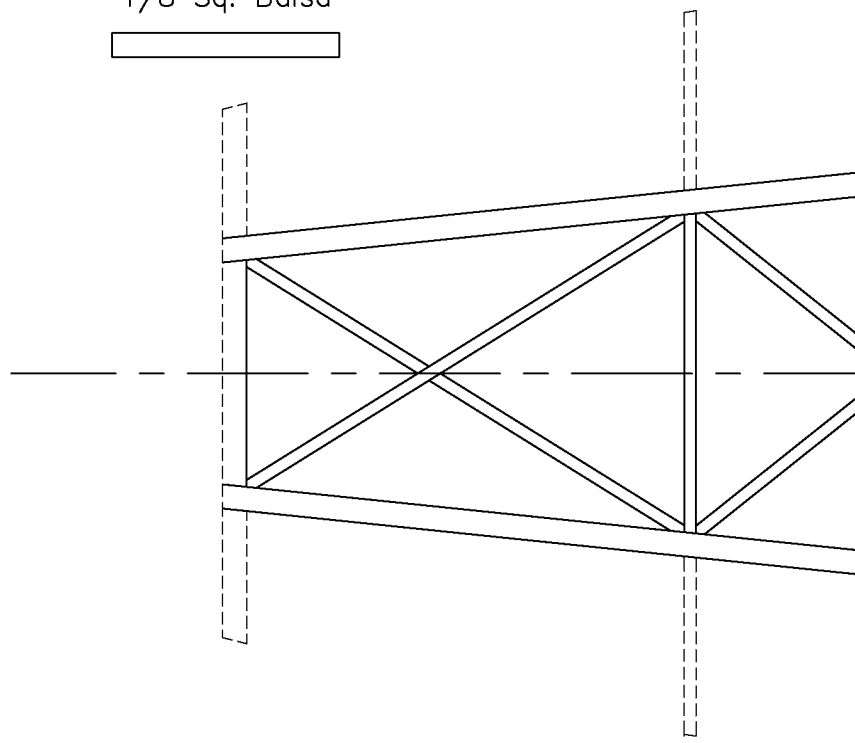
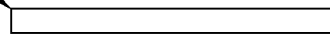
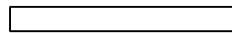


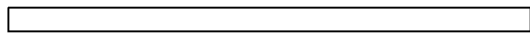
Patterns for Fuselage Cross Pieces.  
All are 1/16 x 1/8 Balsa 2 each  
Req. Unless Specified Otherwise.

1/8 Sq. Balsa

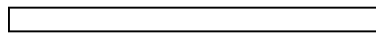




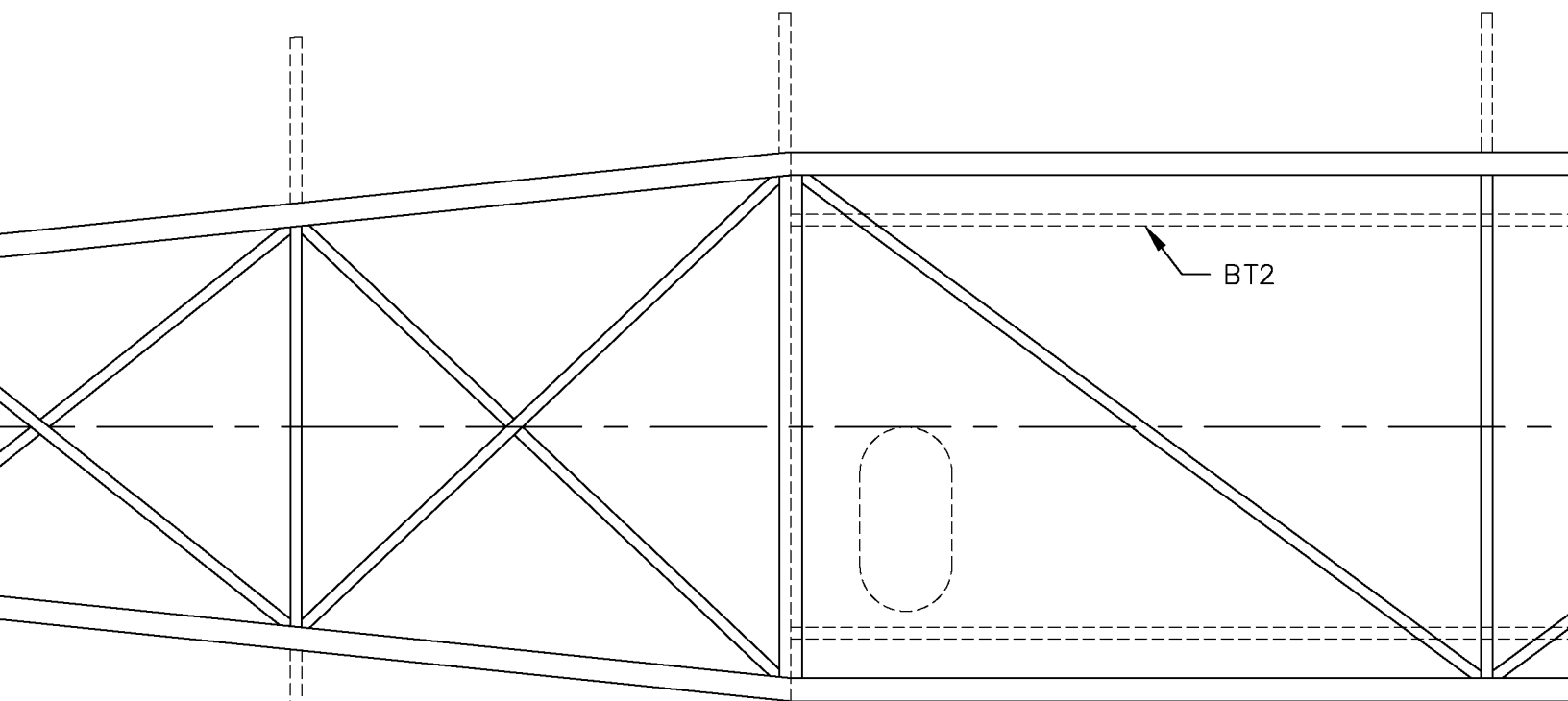
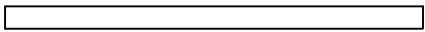
1 Req.



1/8 Sq. Balsa

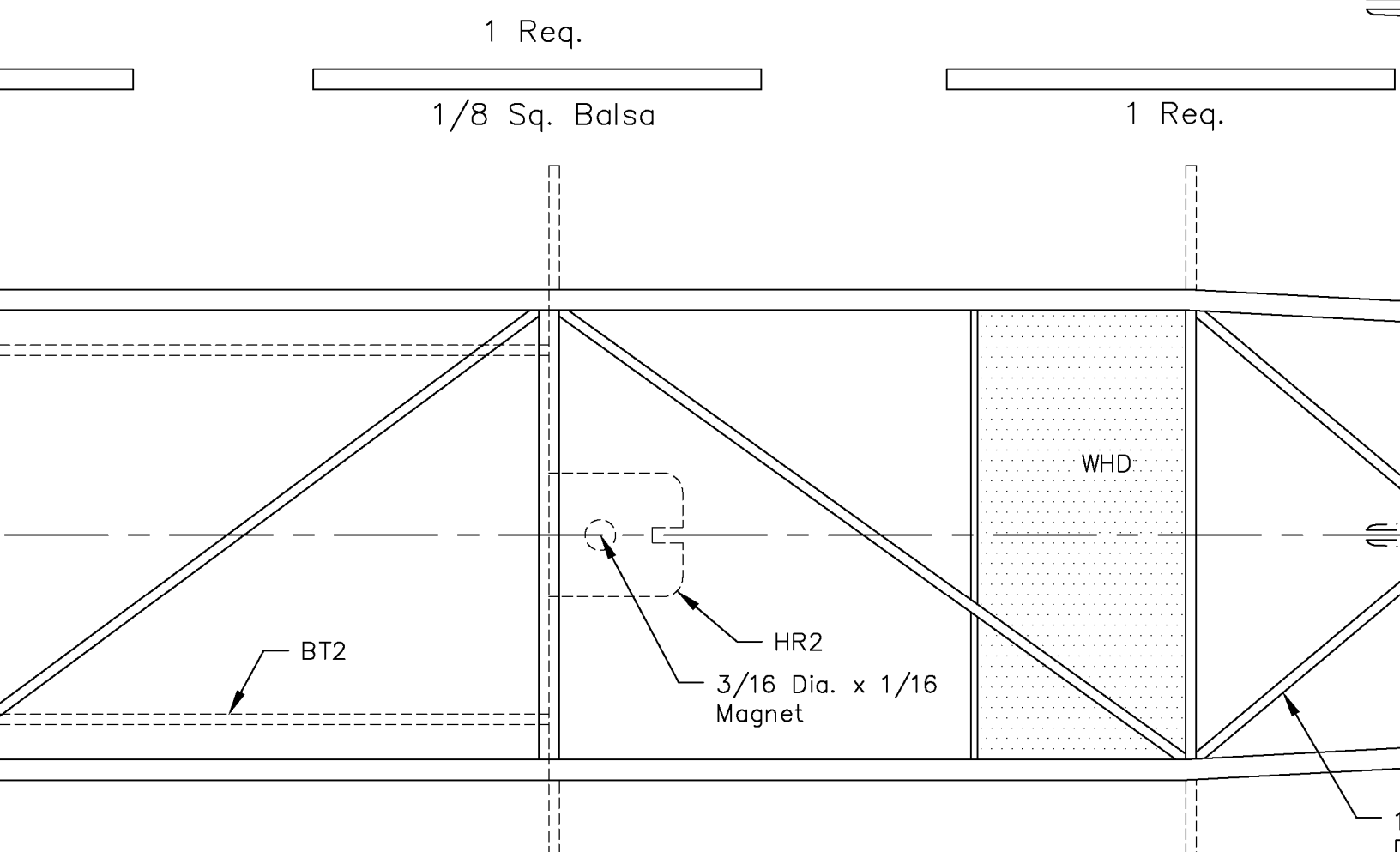


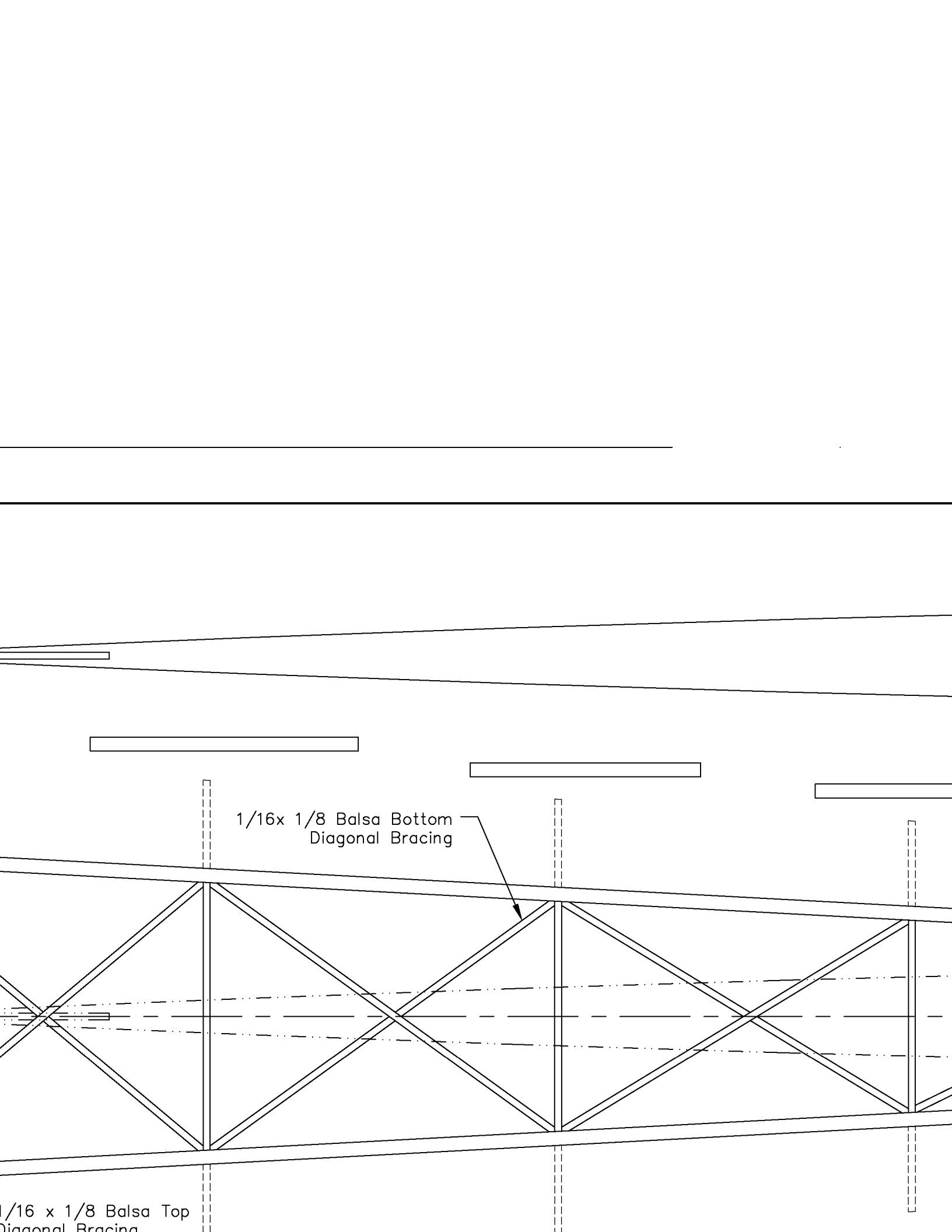
1 Req.



BT2

Fuselage Top View

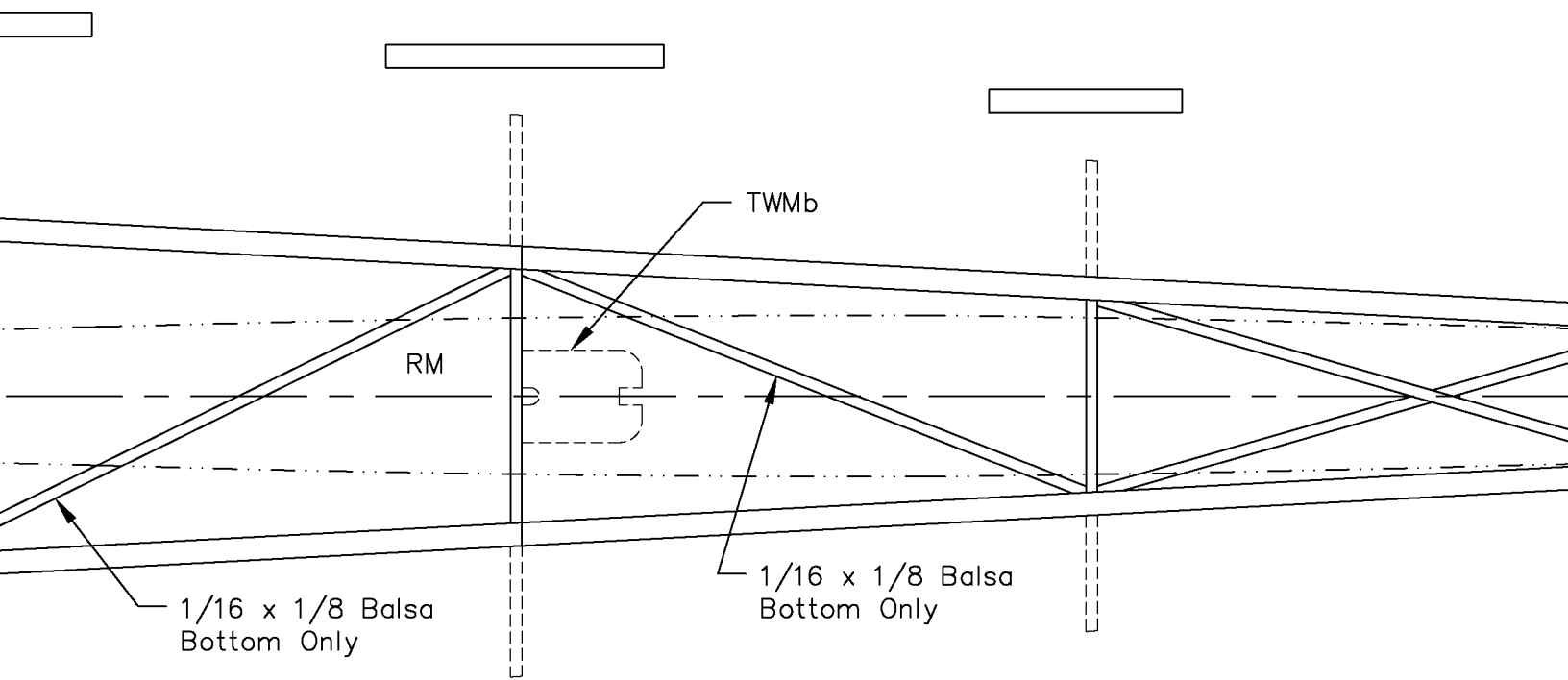


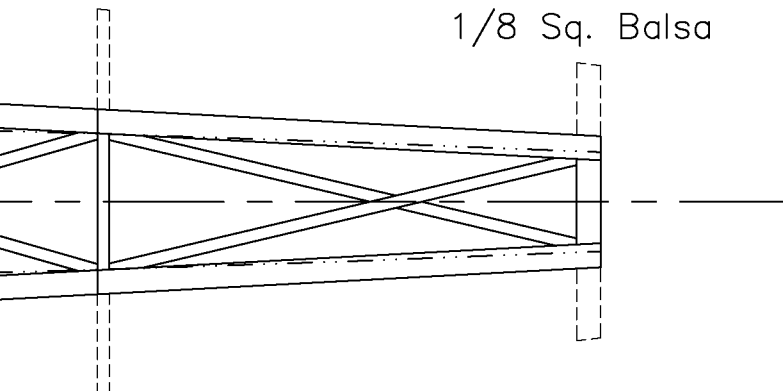
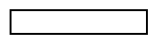
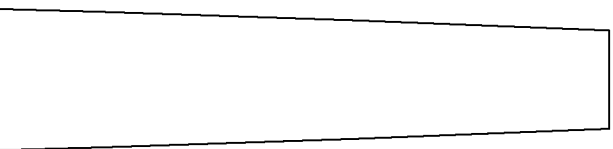


1/16x 1/8 Balsa Bottom  
Diagonal Bracing

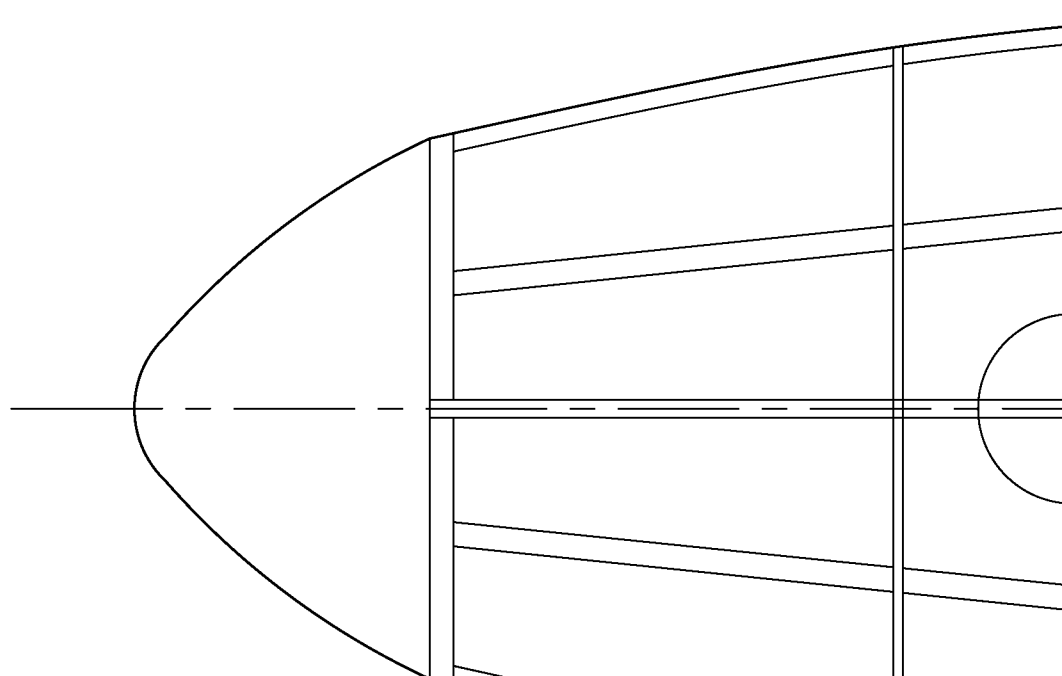
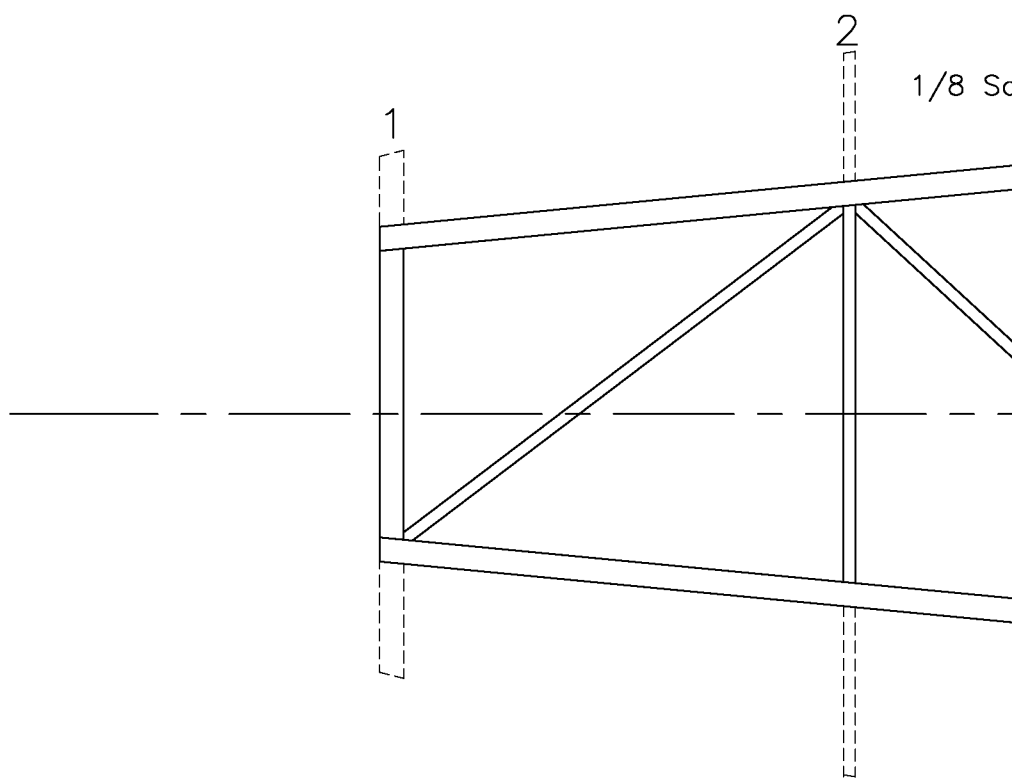
1/16 x 1/8 Balsa Top  
Diagonal Bracing

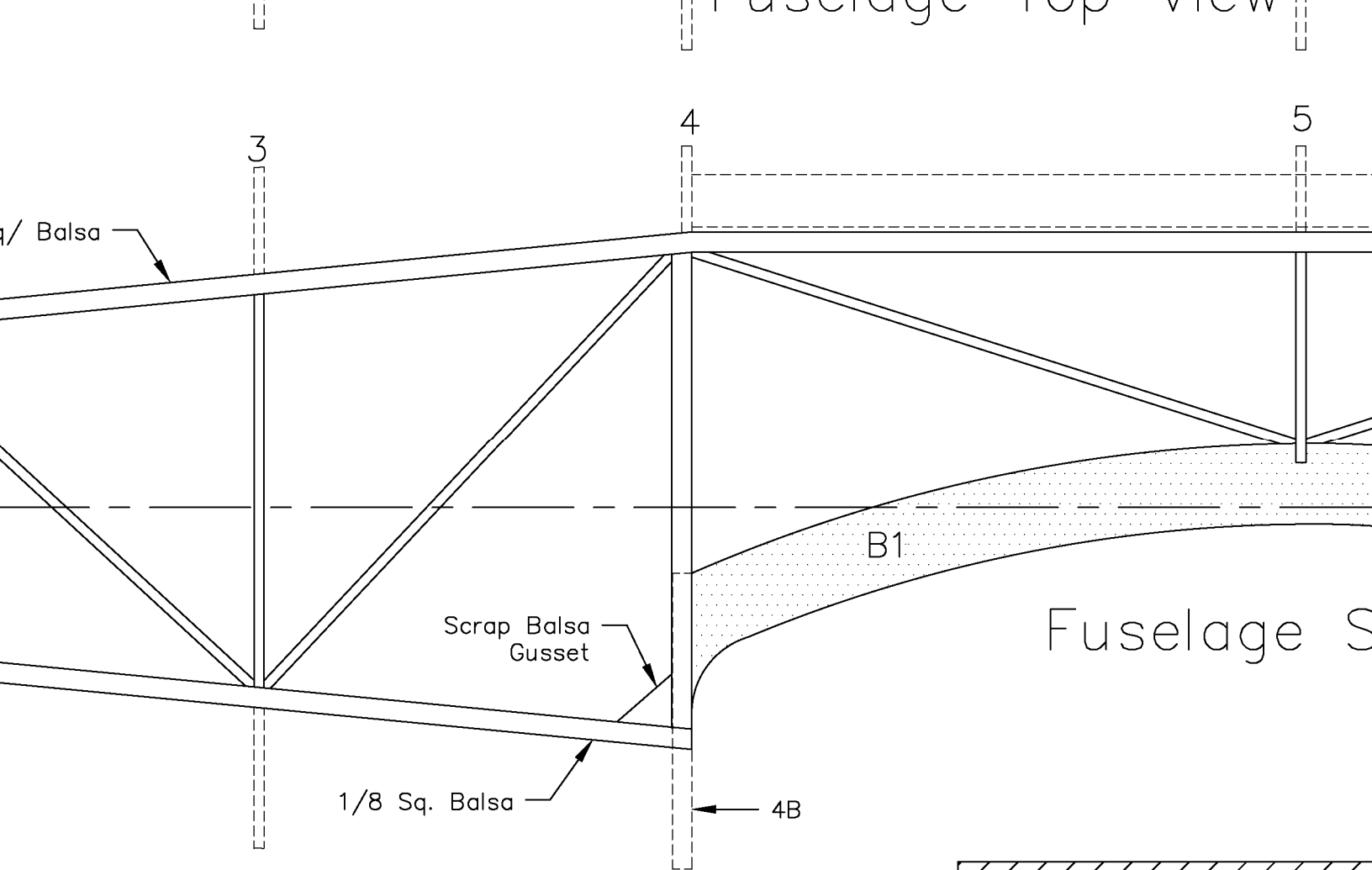
RM





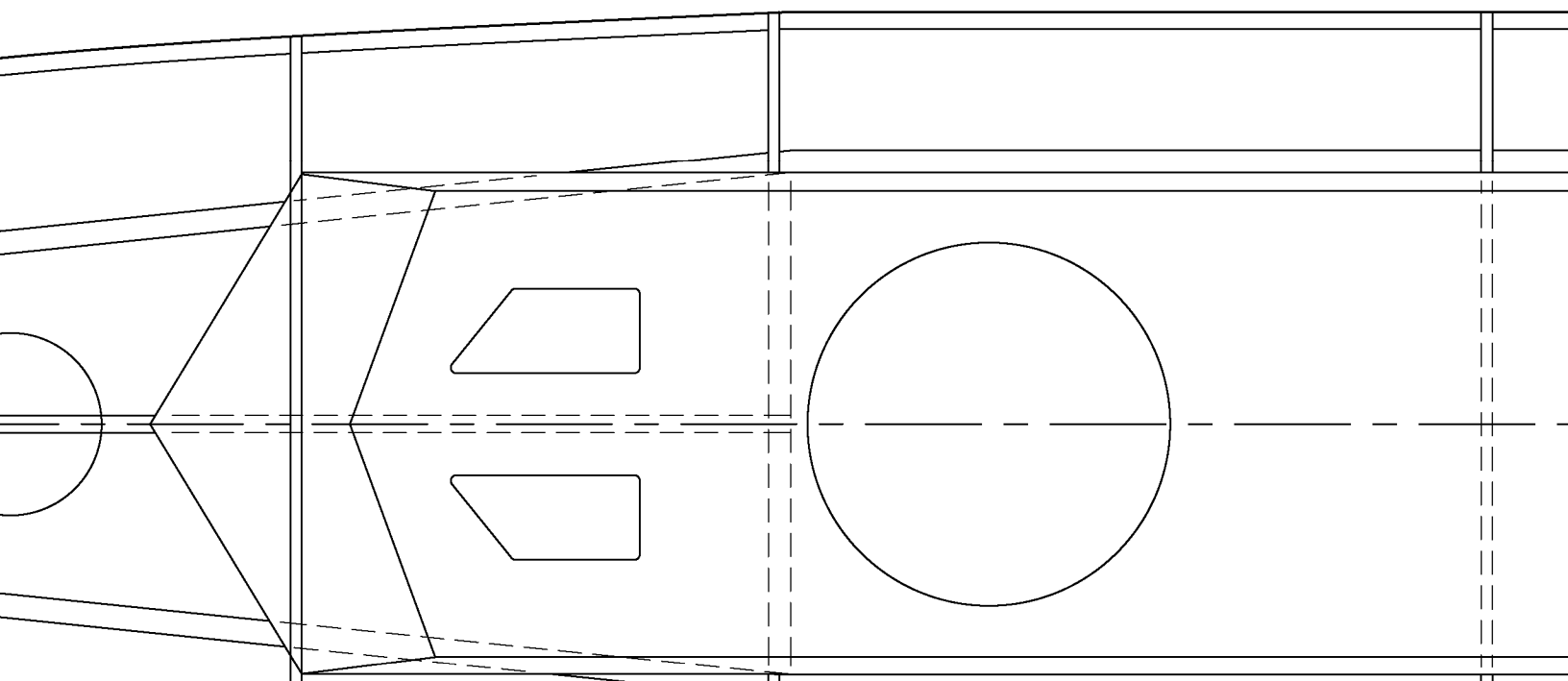
1/8 Sq. Balsa



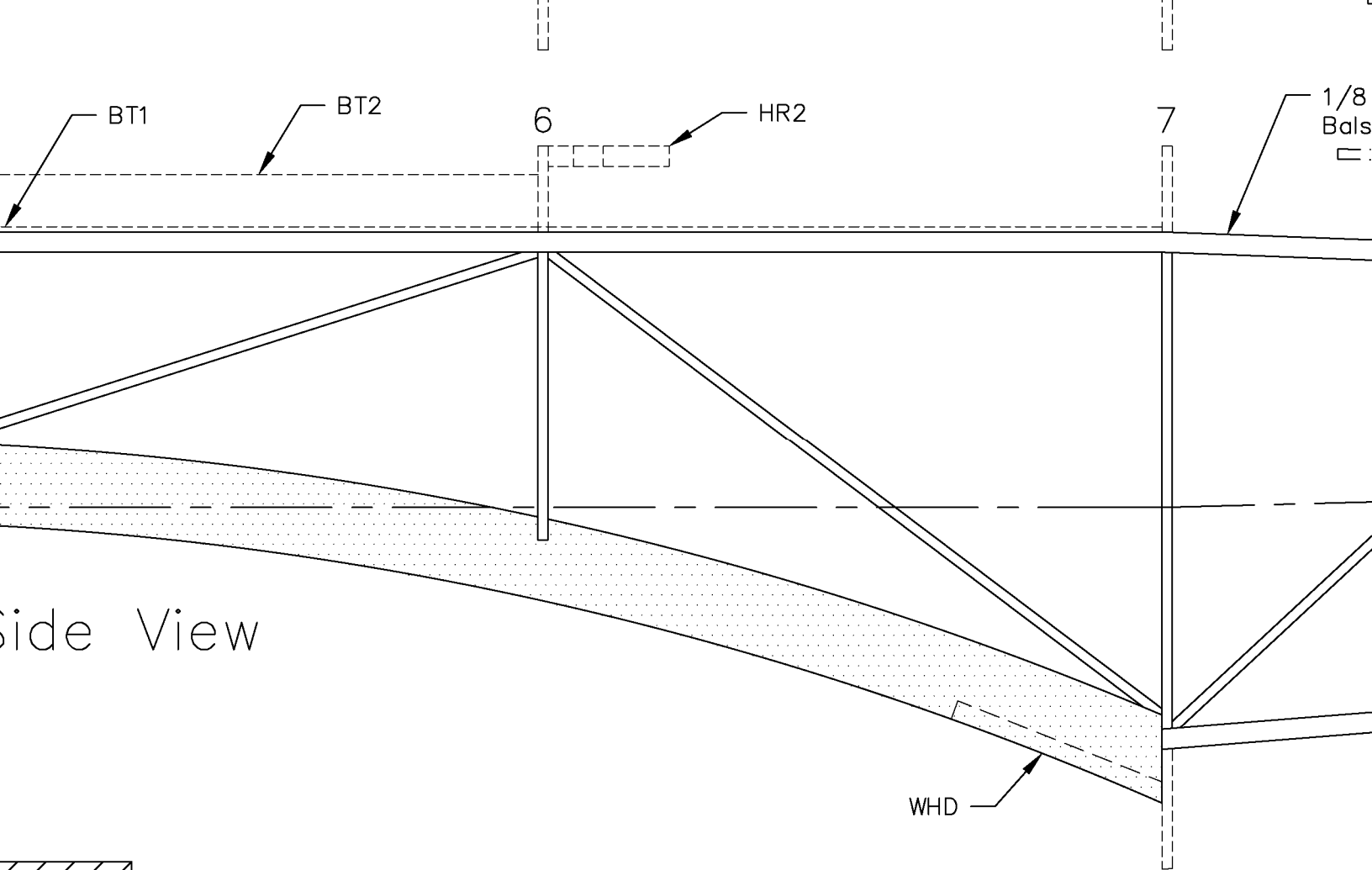


Fuselage S

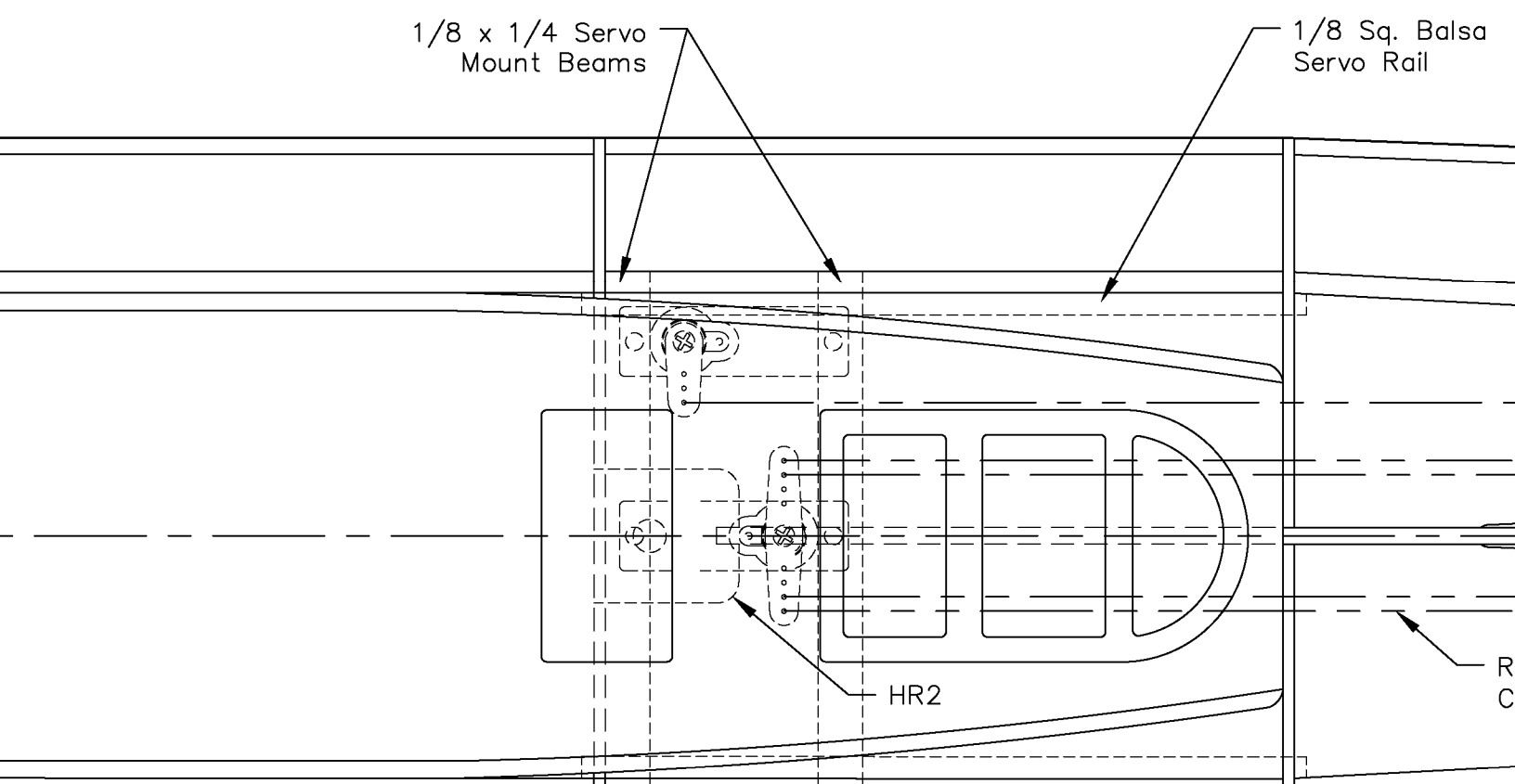
Note: All Fuselage String  
made from 3/32 Sq. B





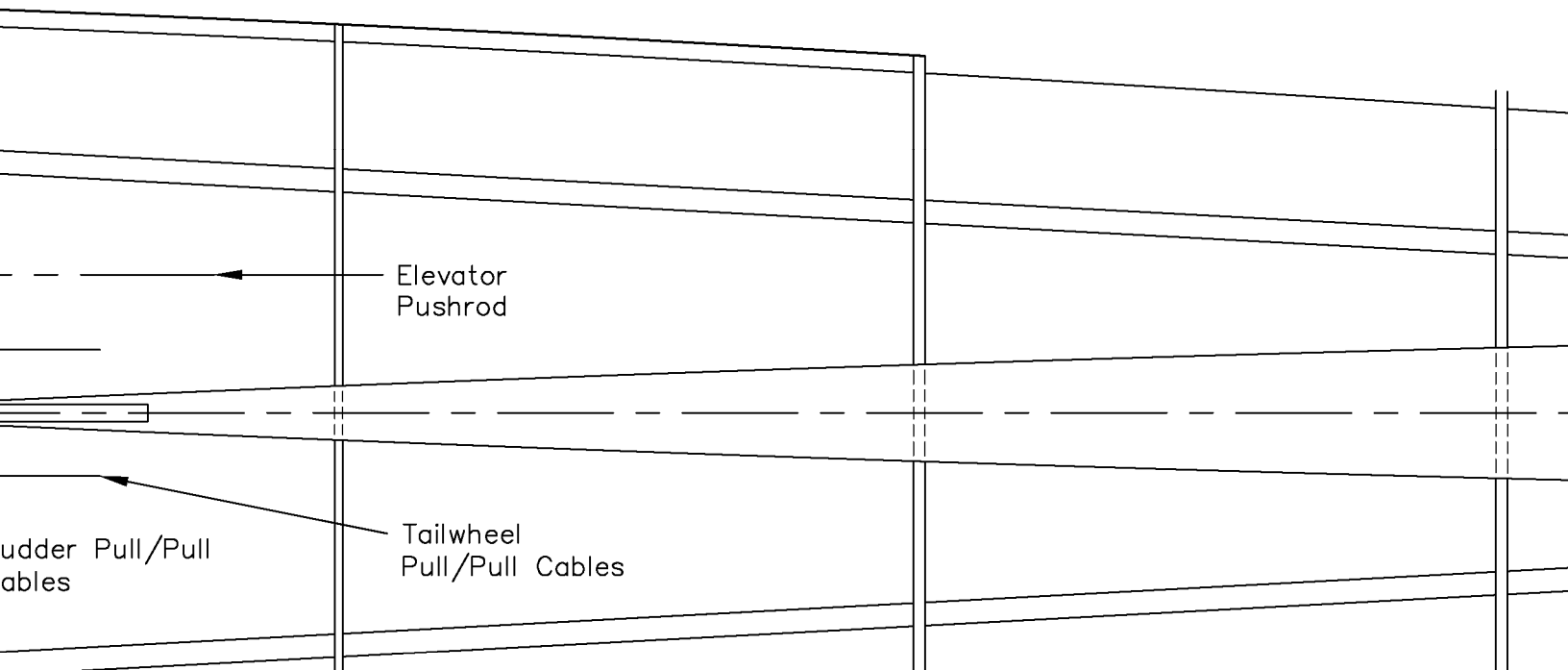
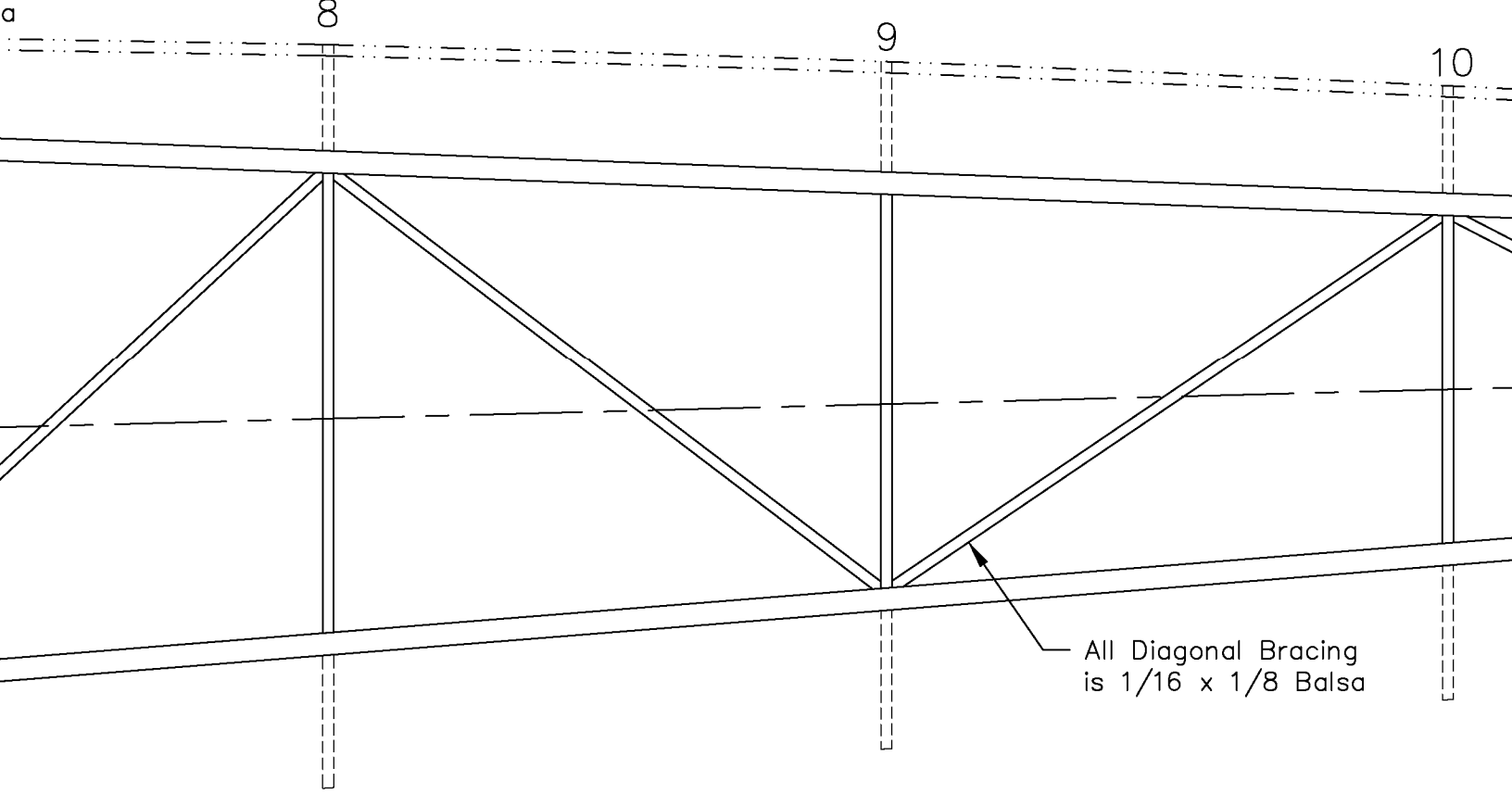


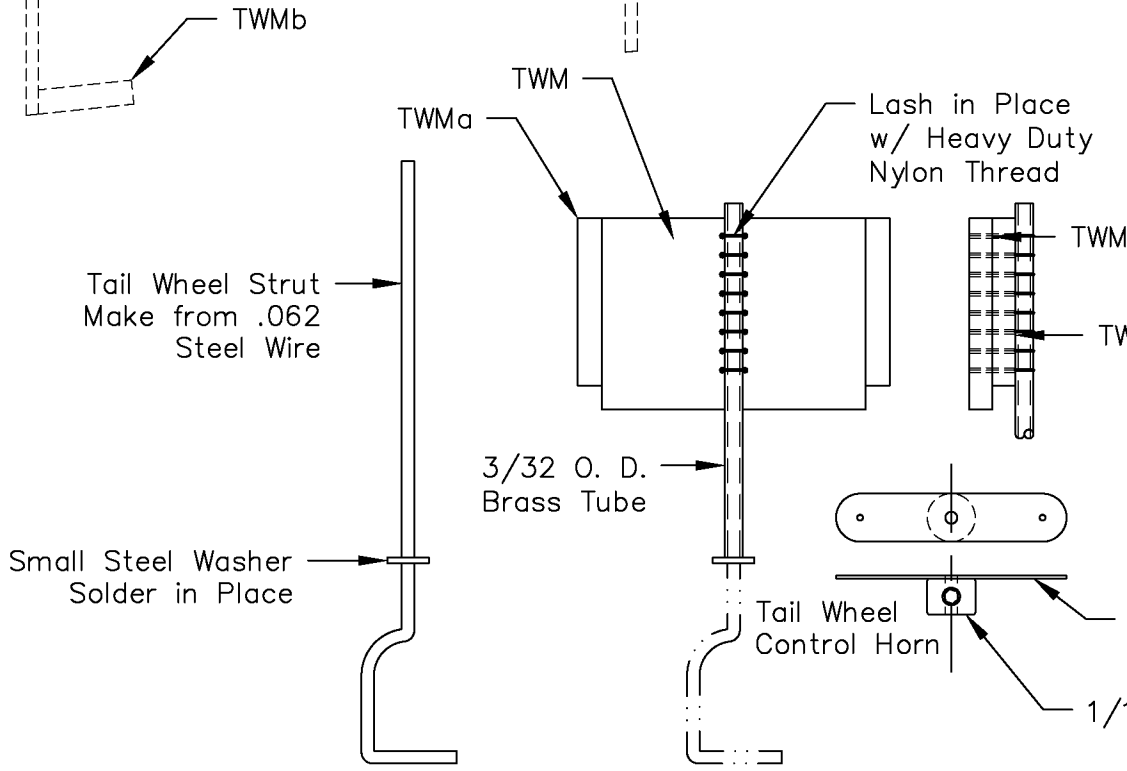
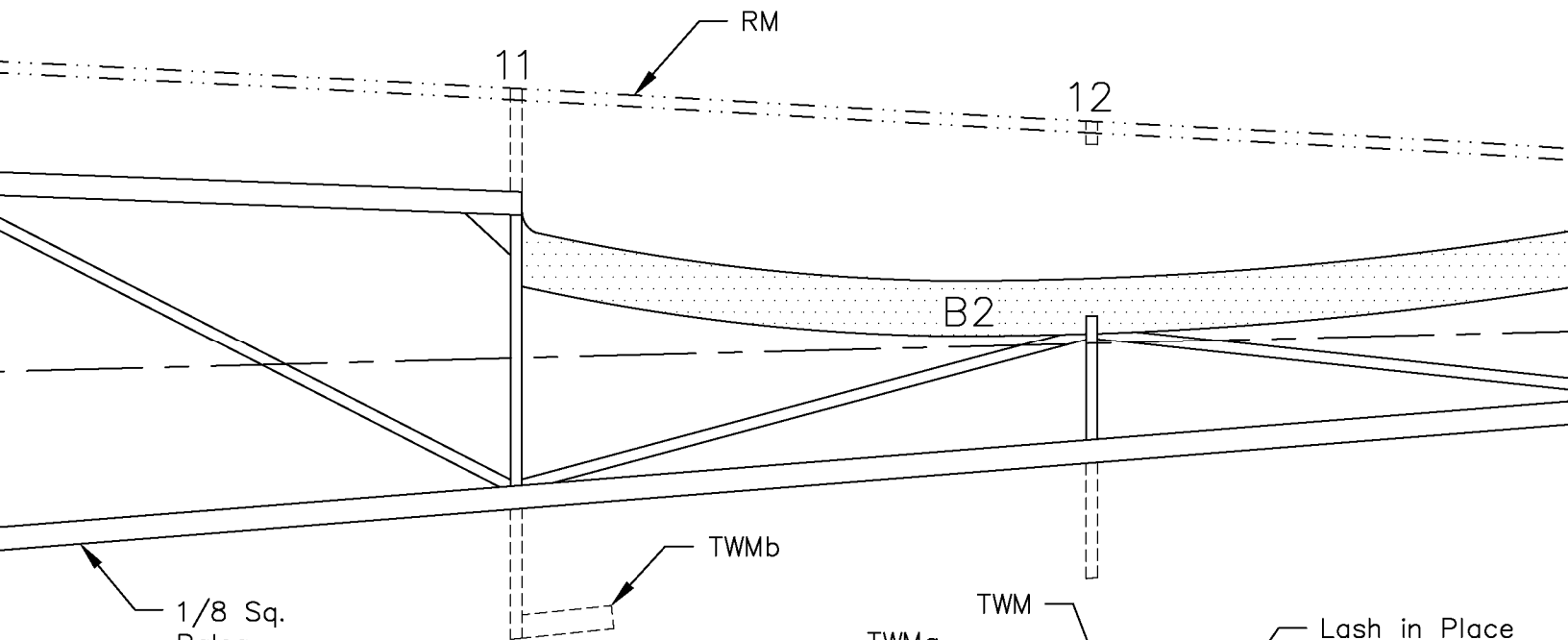
ers are  
Balsa



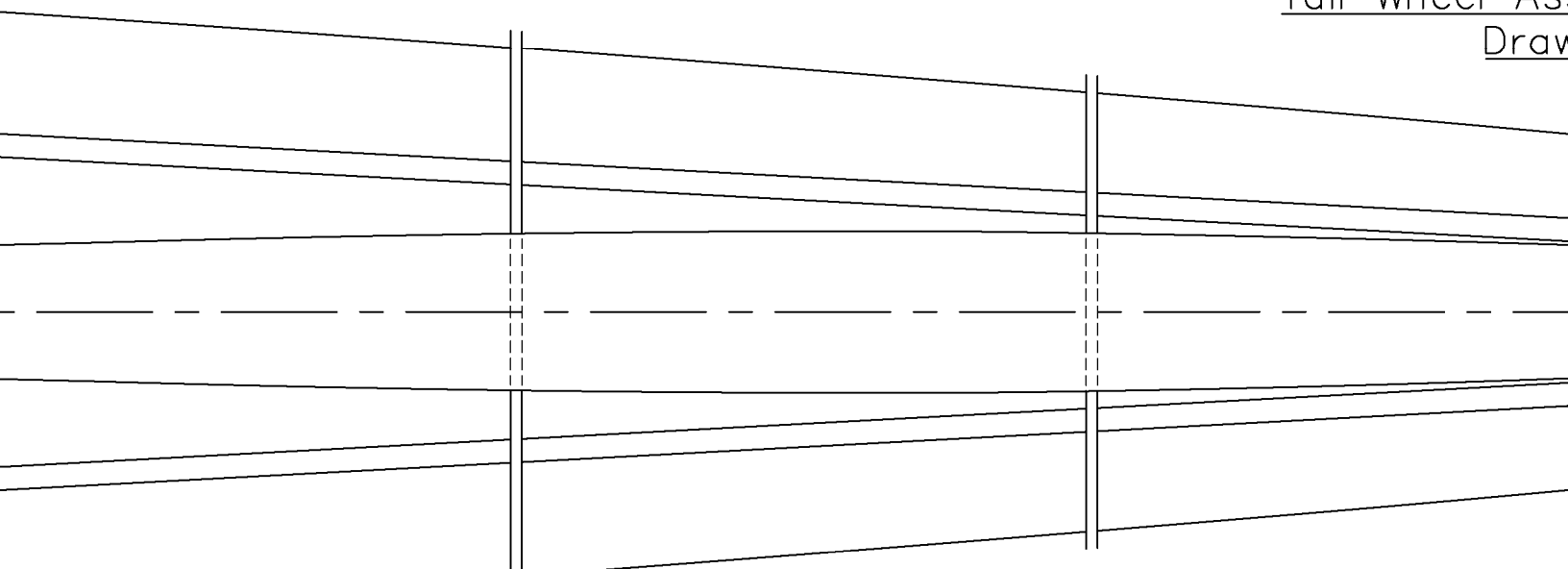
Diagonal Bracing

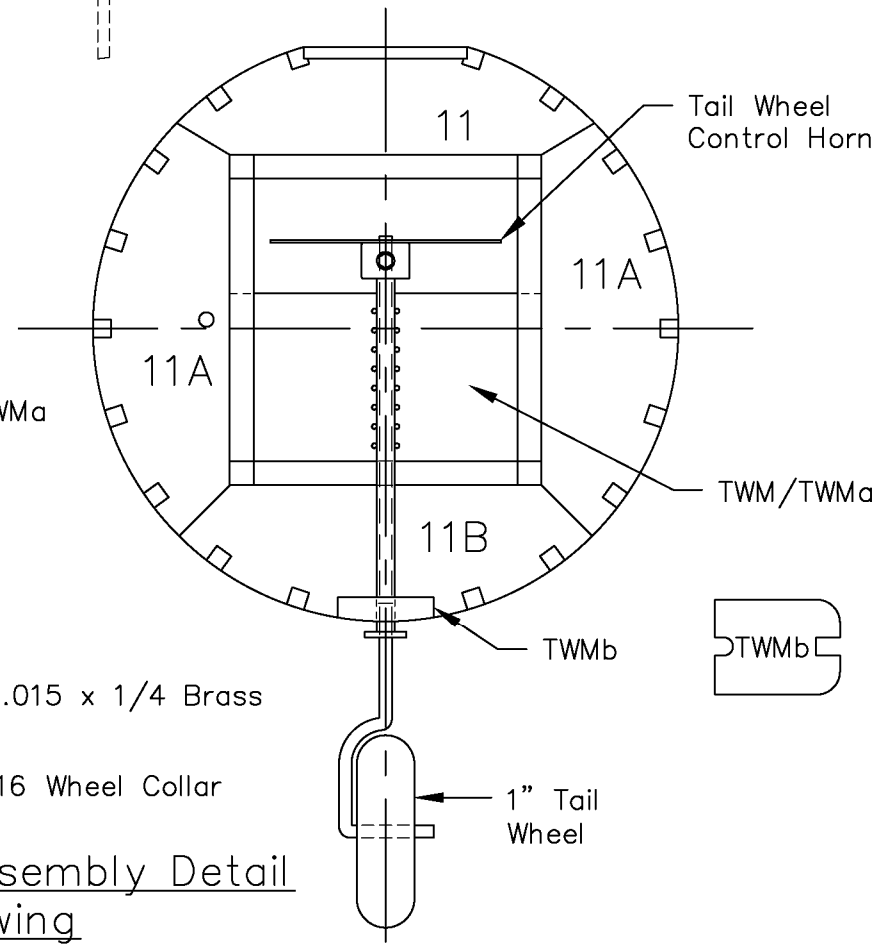
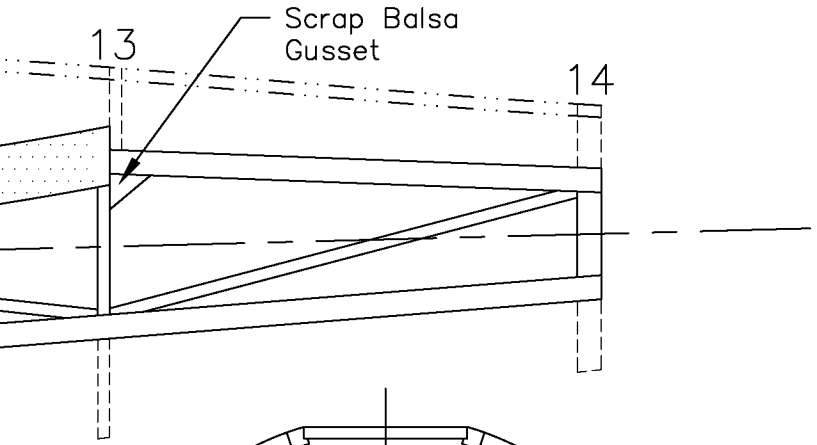
Sq.



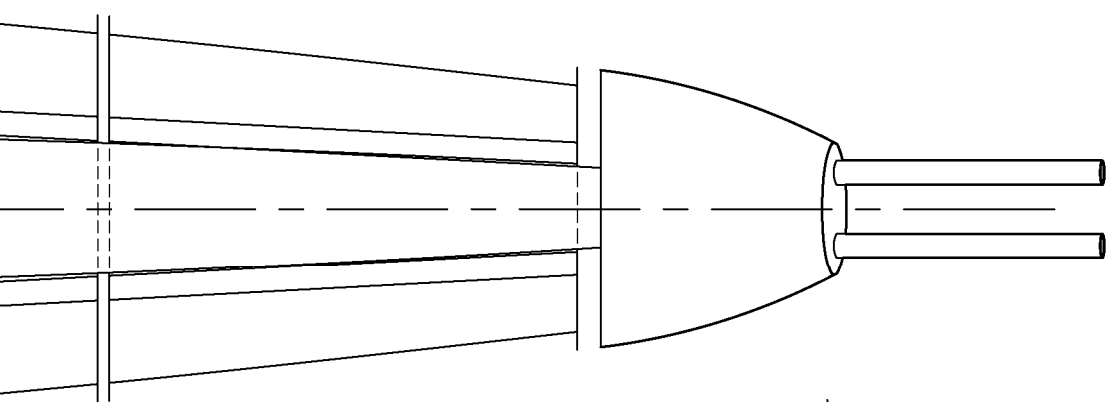


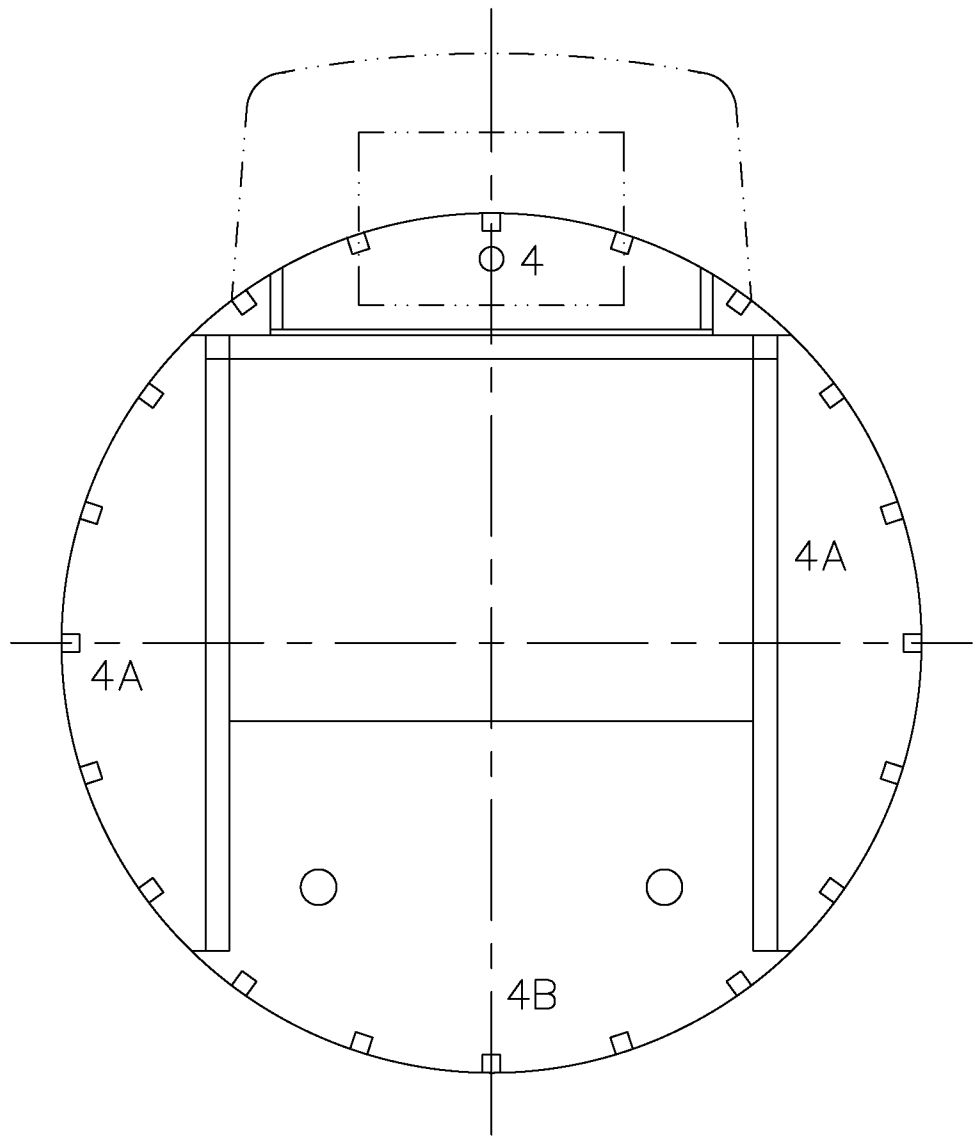
Tail Wheel As  
Draw



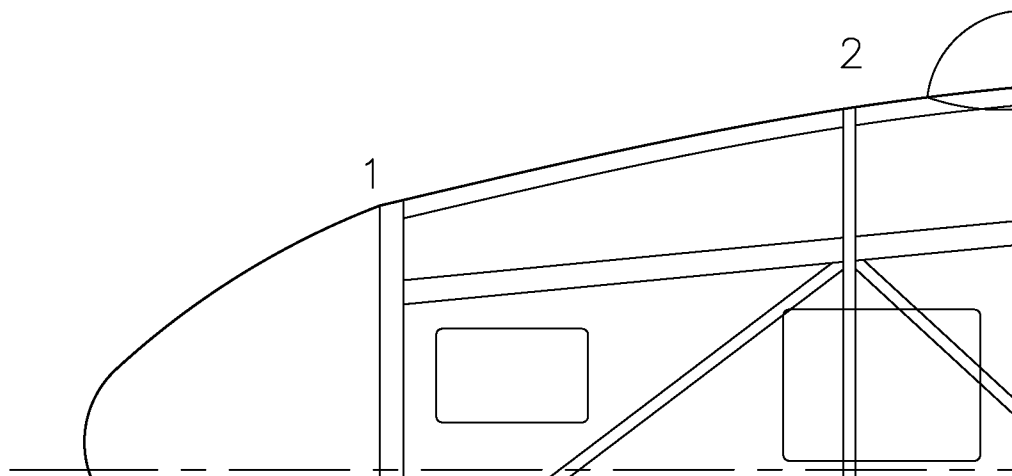


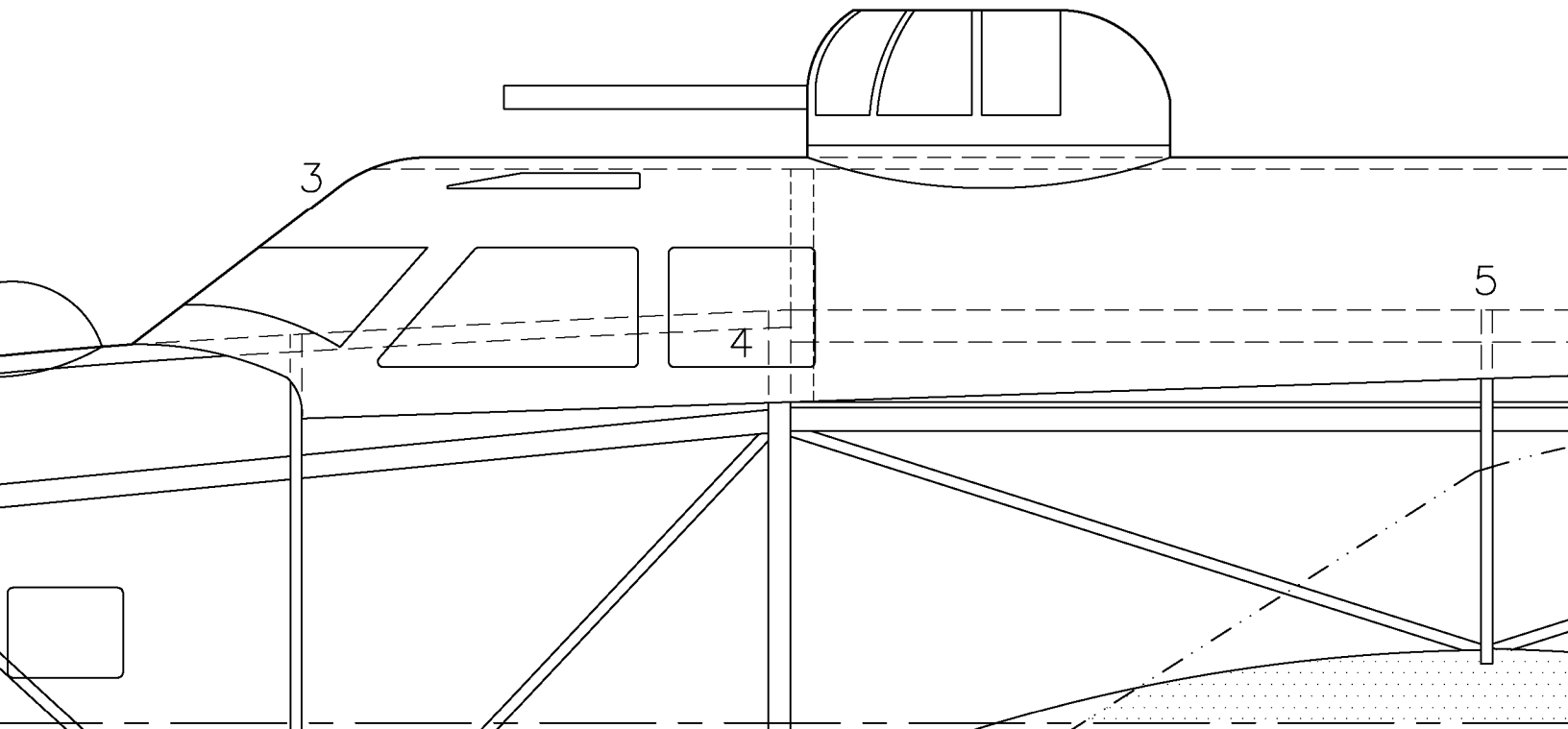
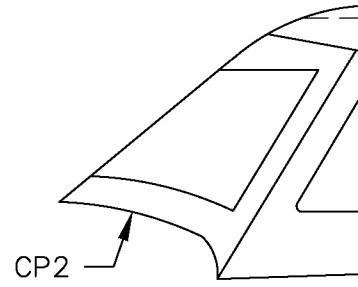
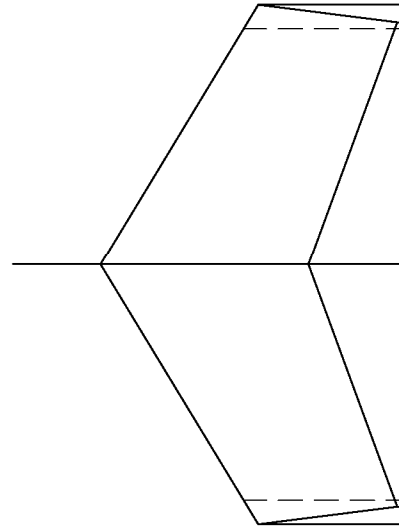
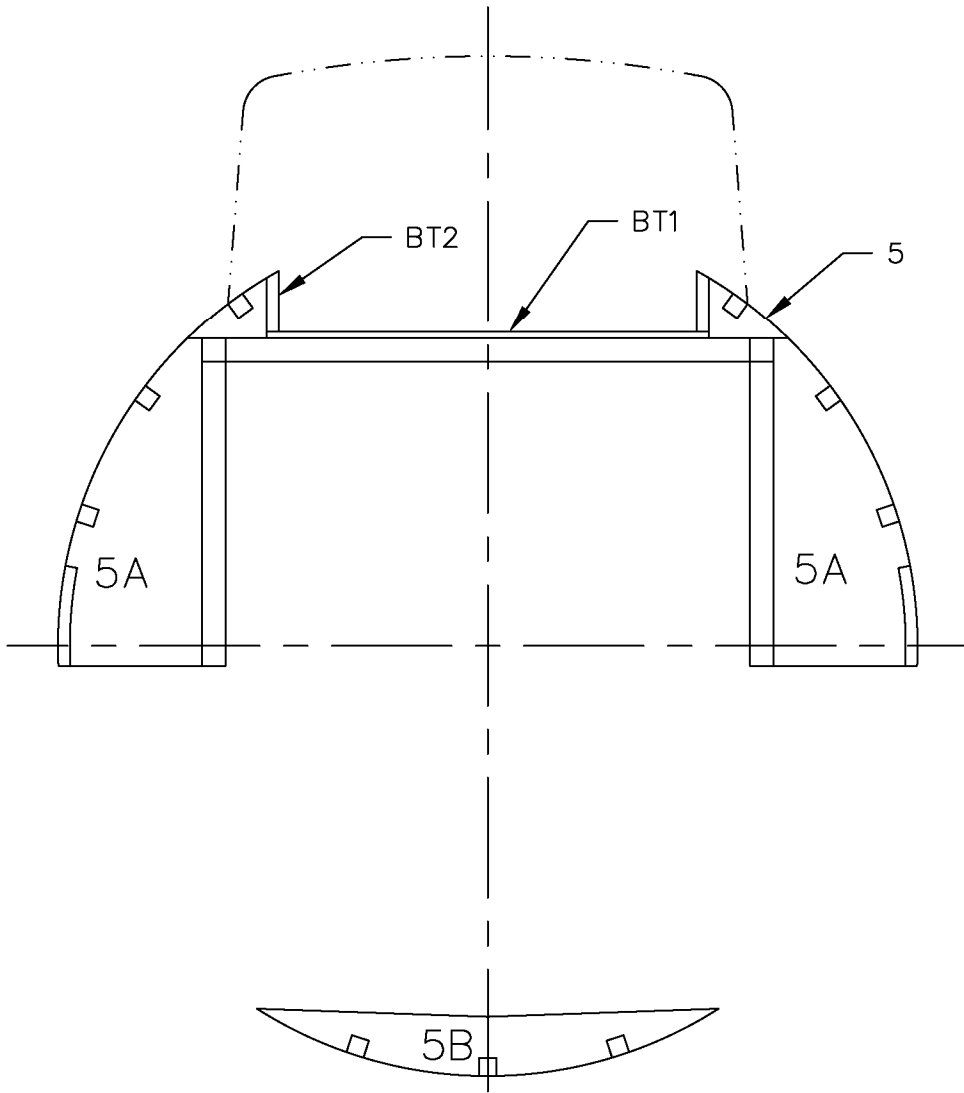
Assembly Detail  
Drawing

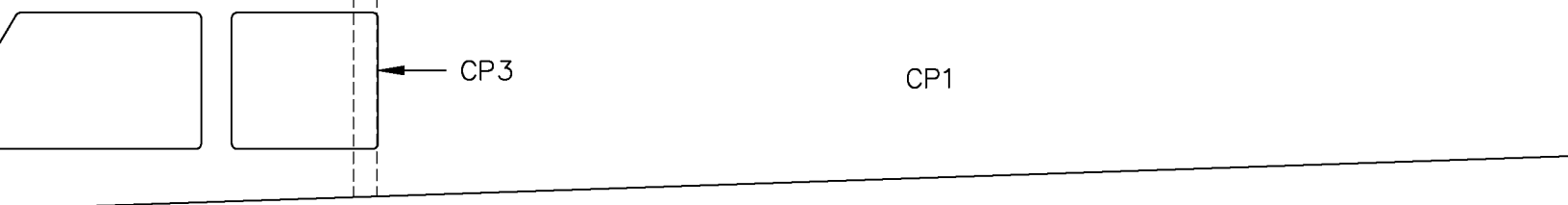
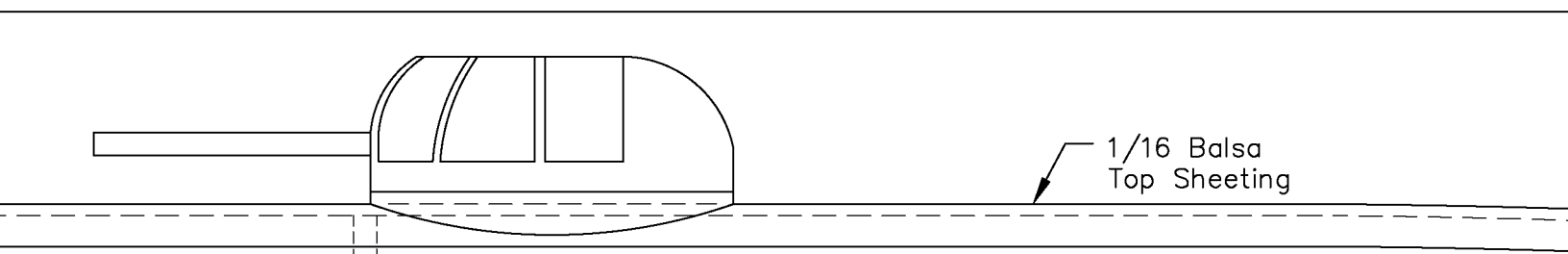
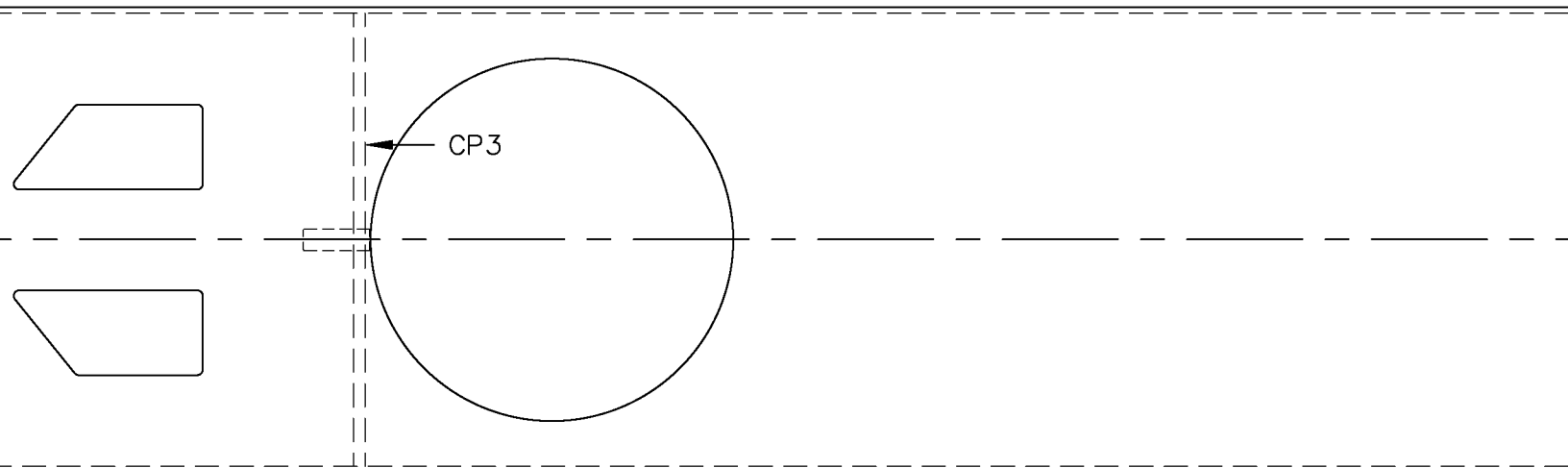




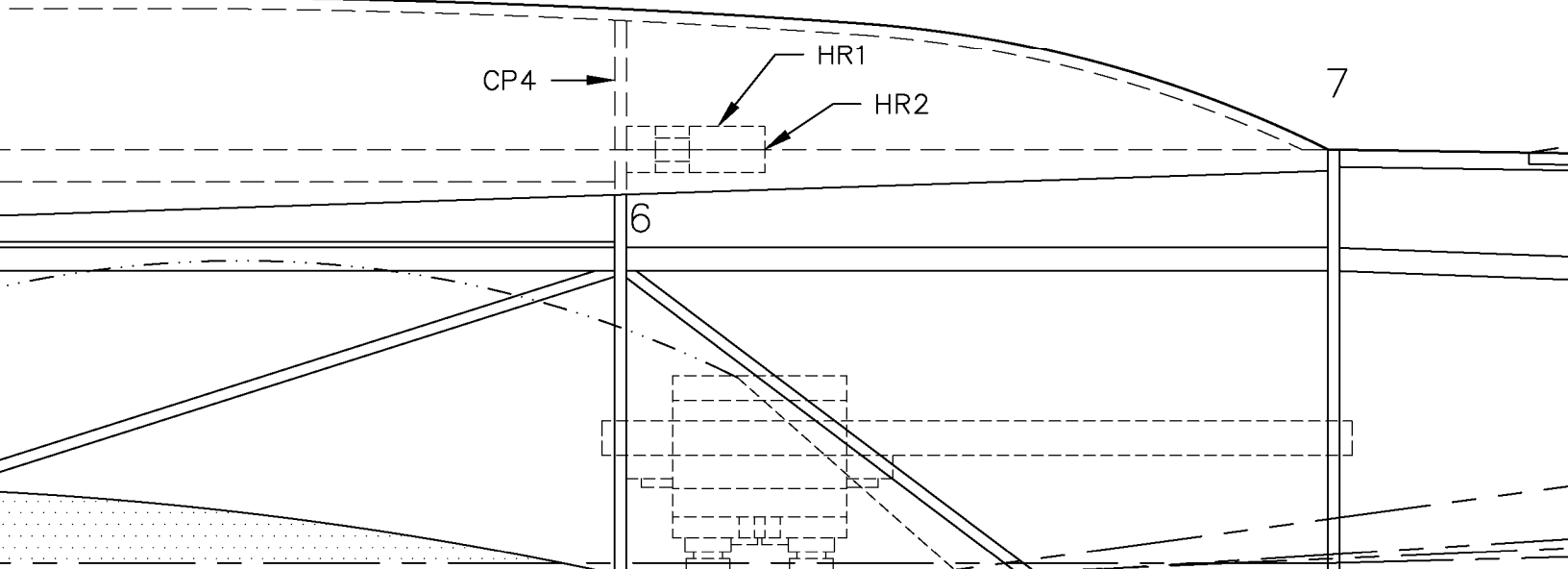
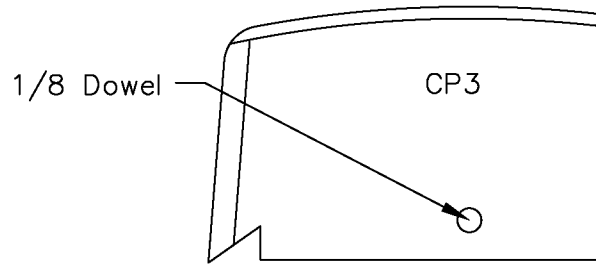
All Fuselage Stringers are  
3/32 Sq. Balsa. Stagger the  
Joints on the Fuselage so  
Not to Build In a Weak Point.

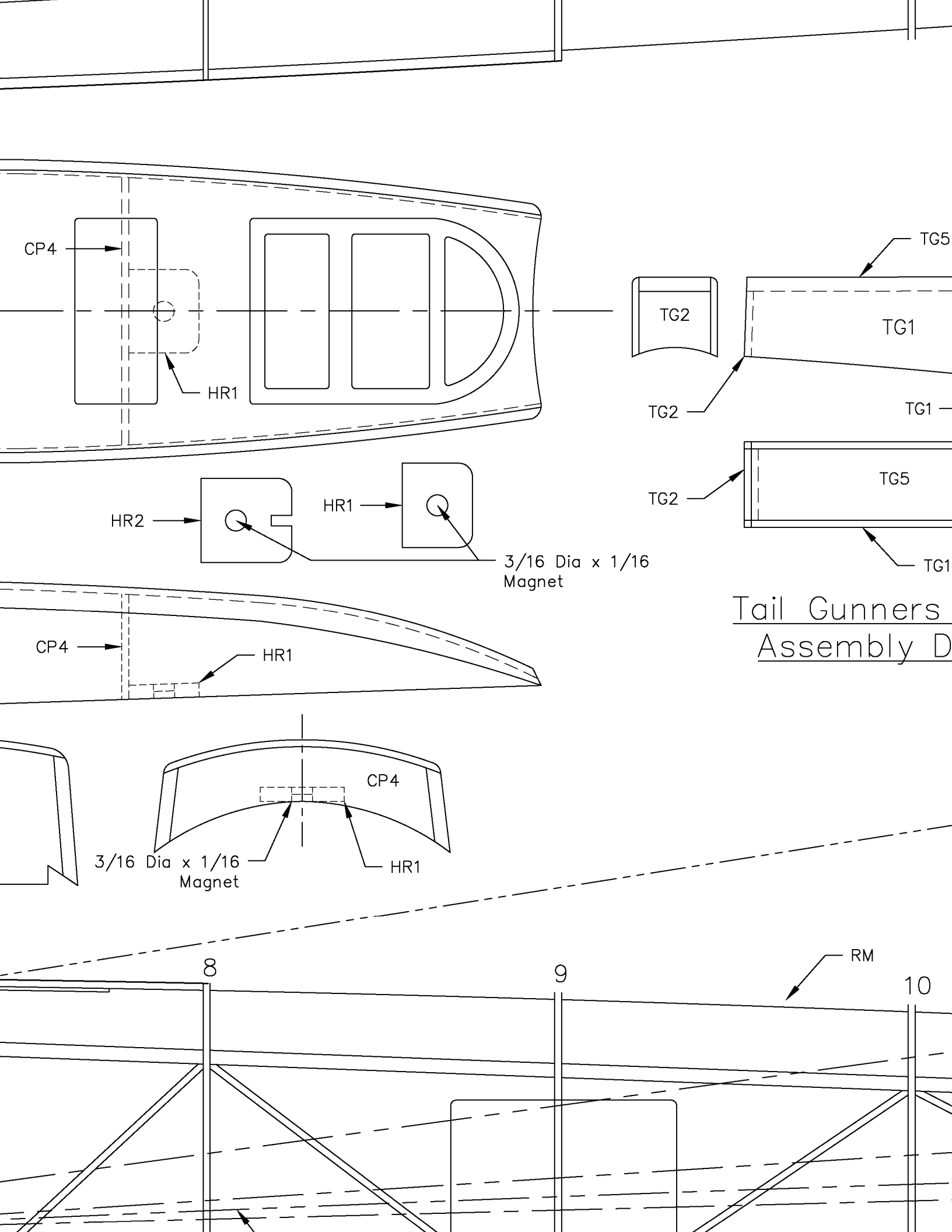




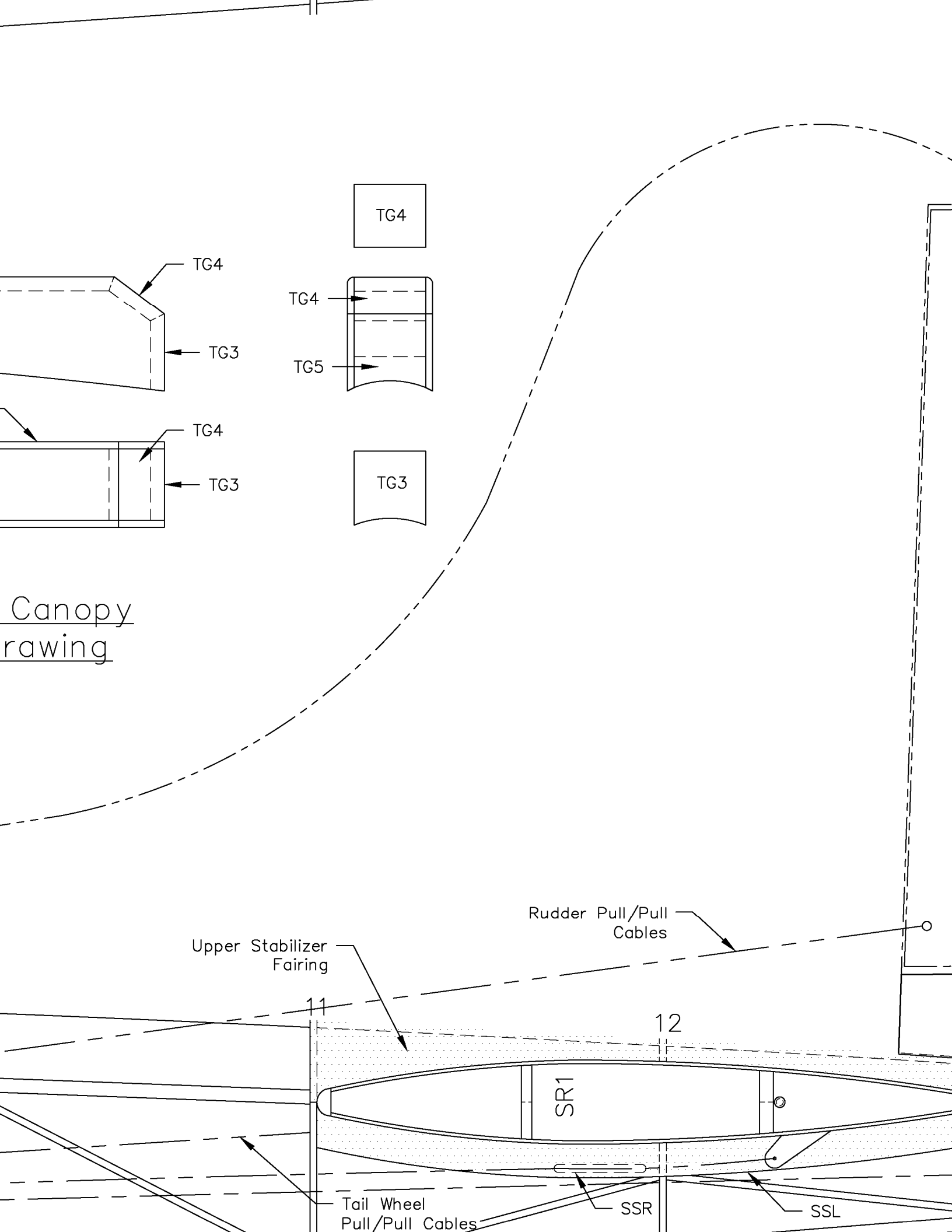


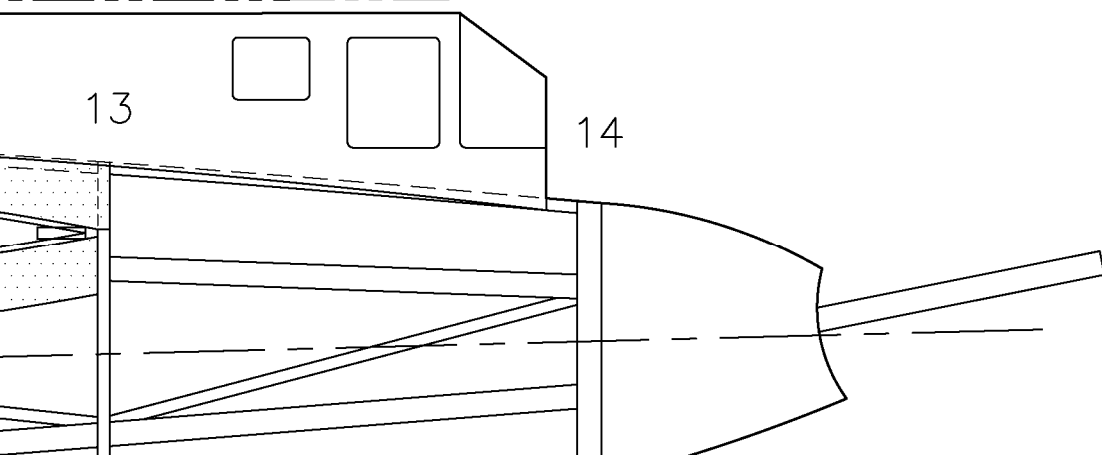
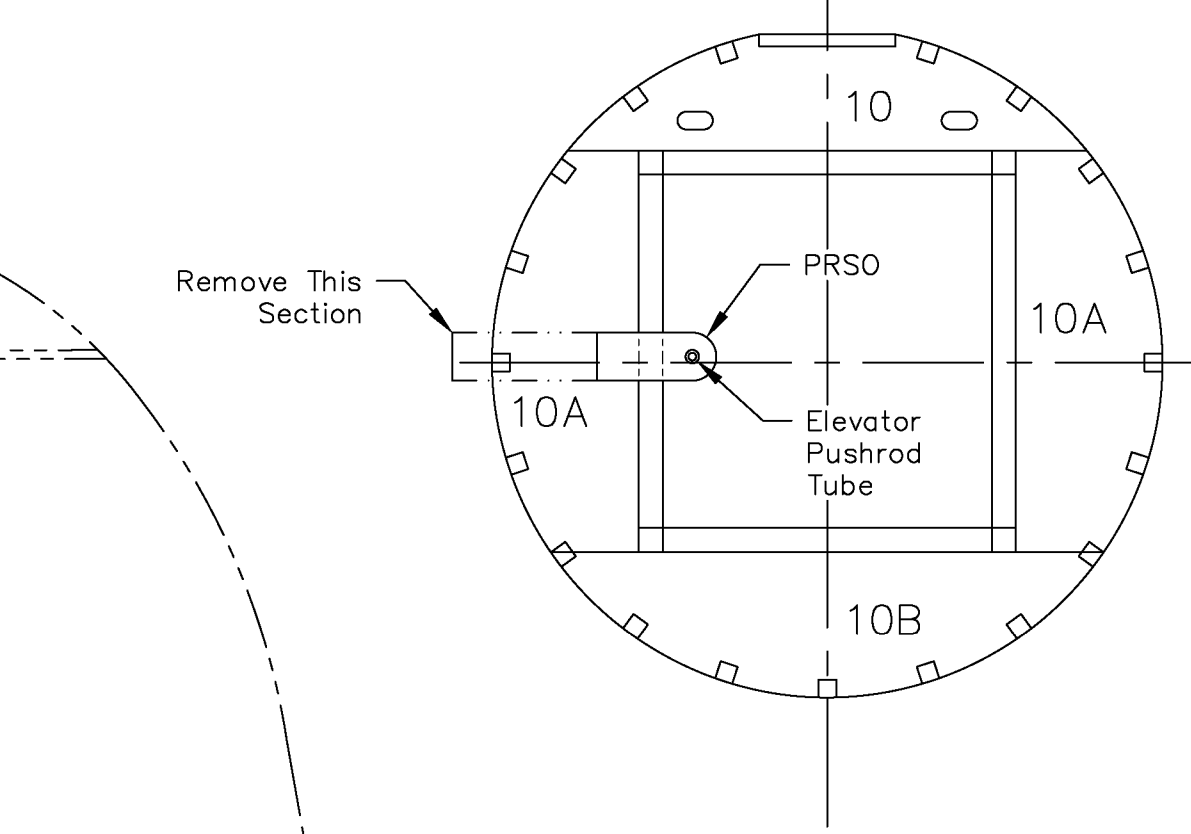
Cockpit / Battery Hatch Assembly Drawing

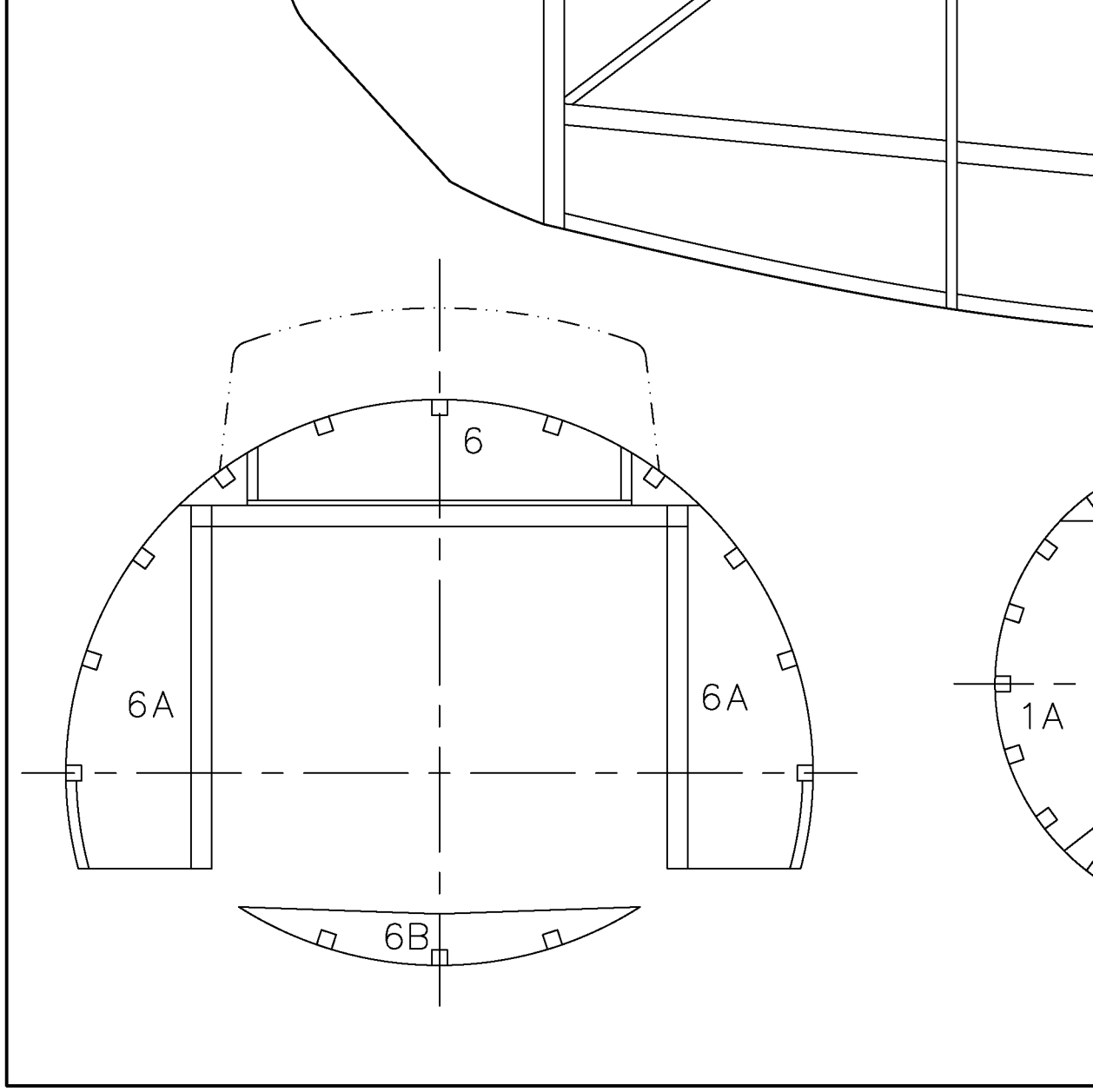


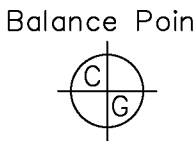
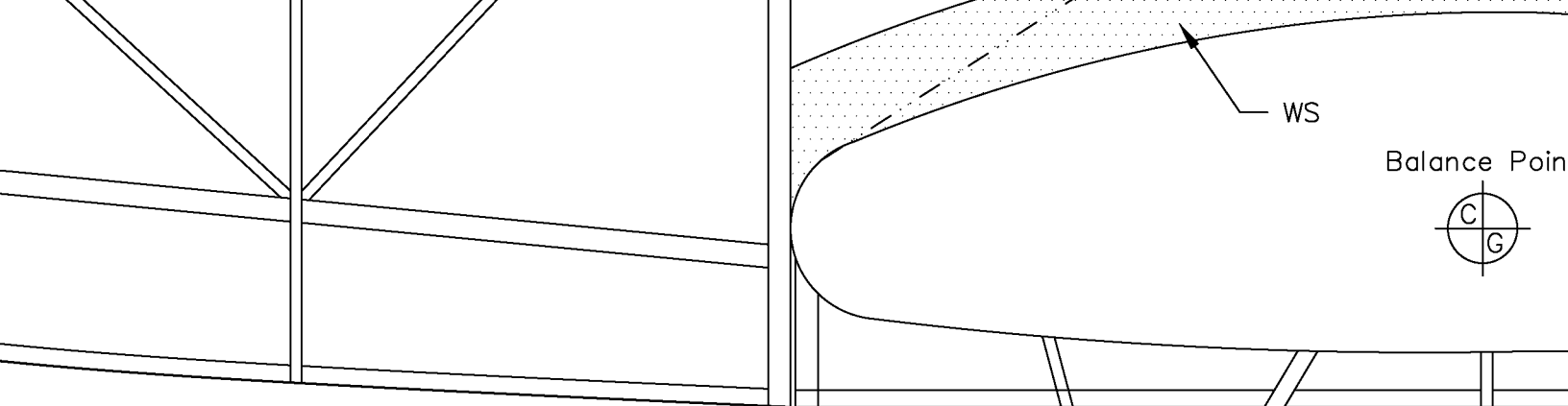






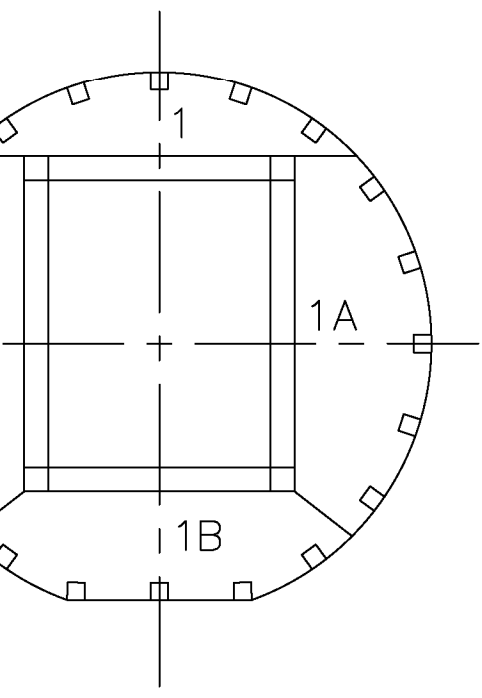




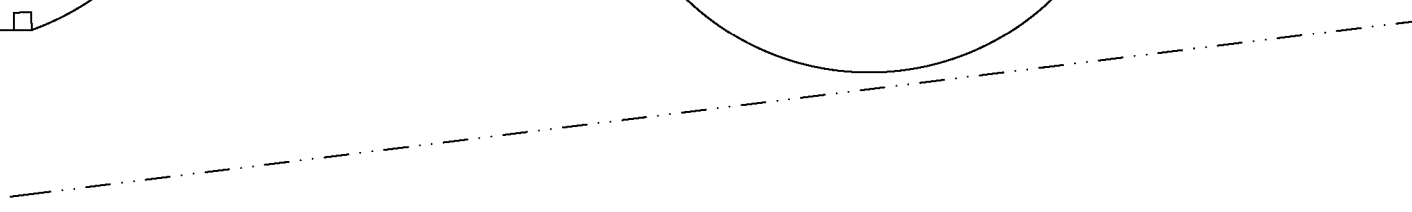
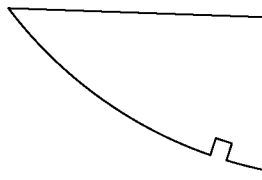
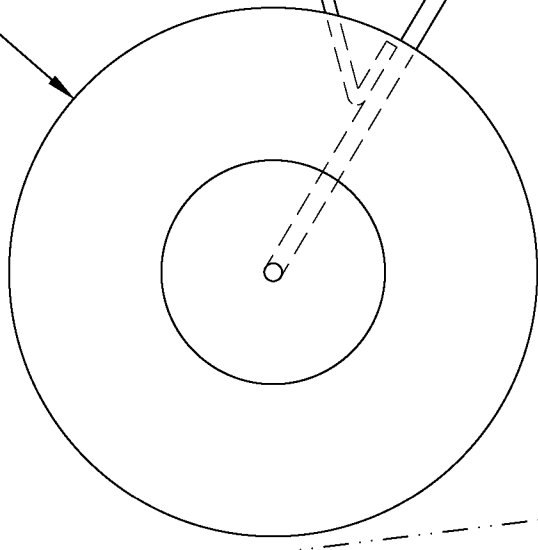


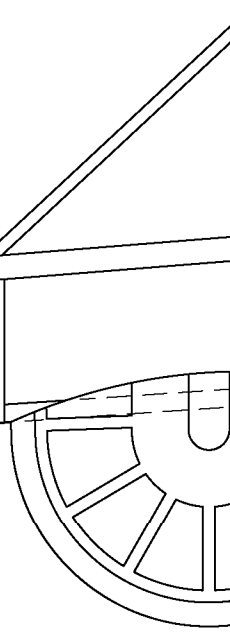
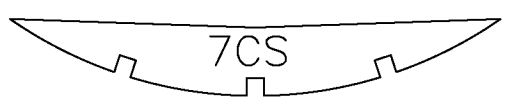
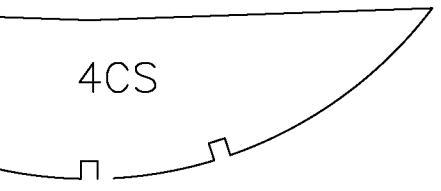
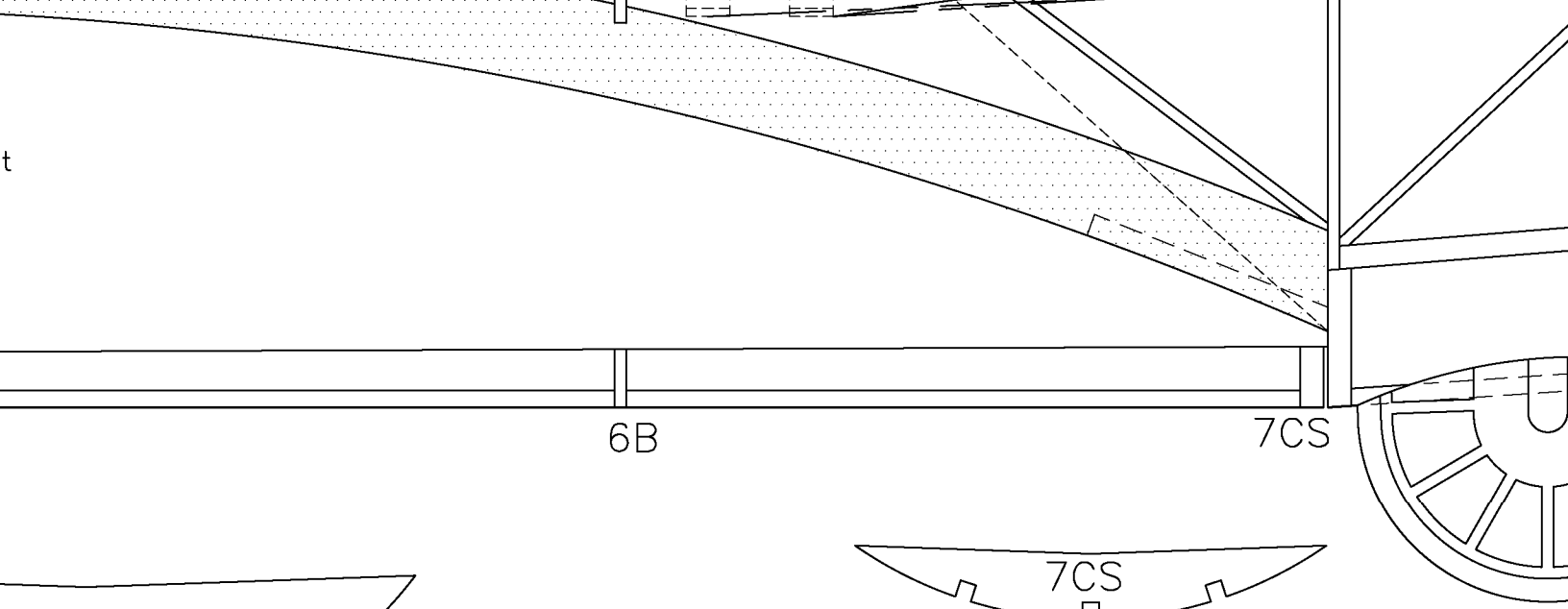
4CS

5B

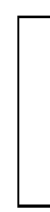


2 3/4" Wheel





1 inch r

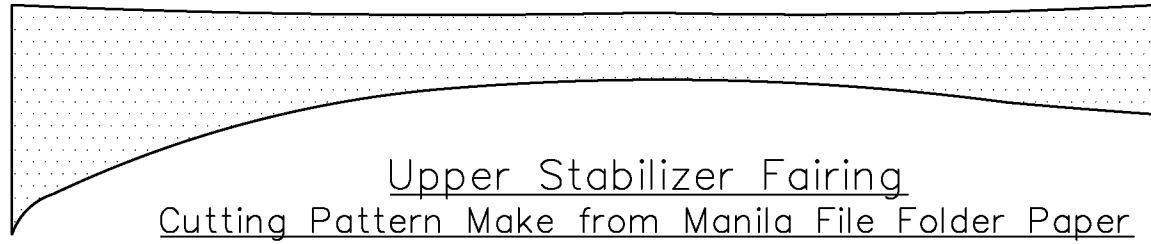
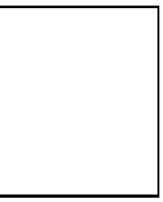


Elevator  
Pushrod

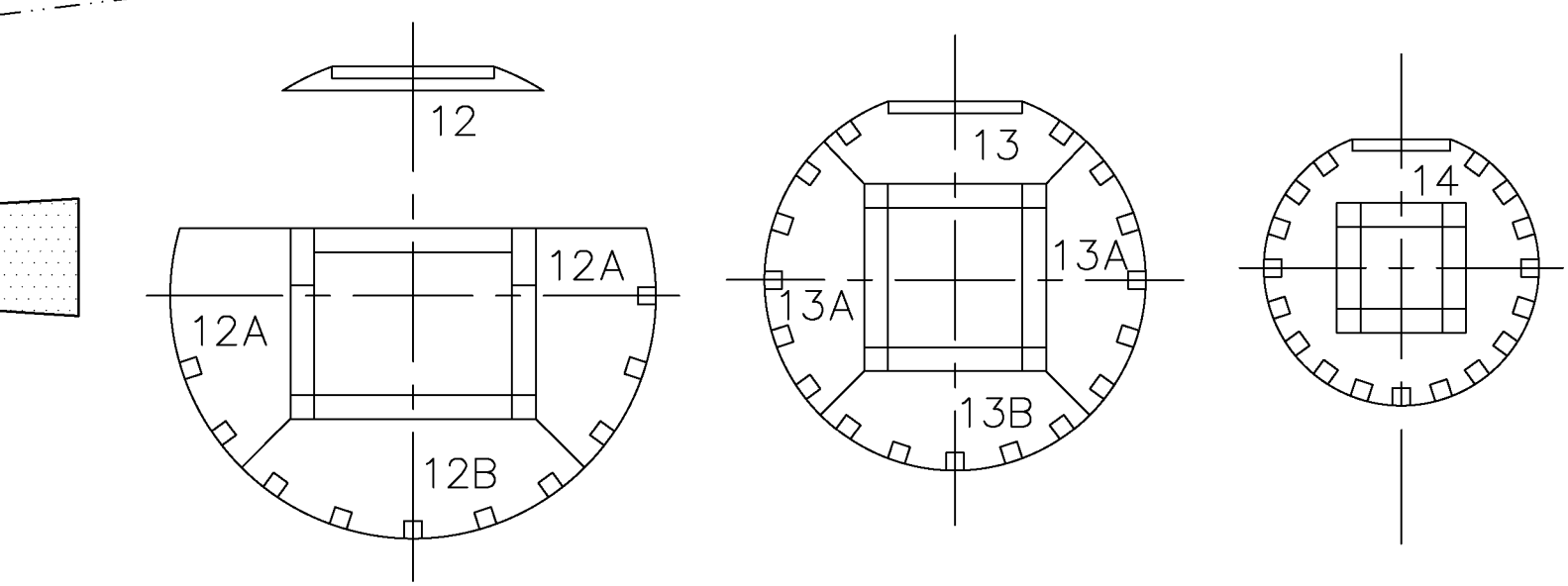
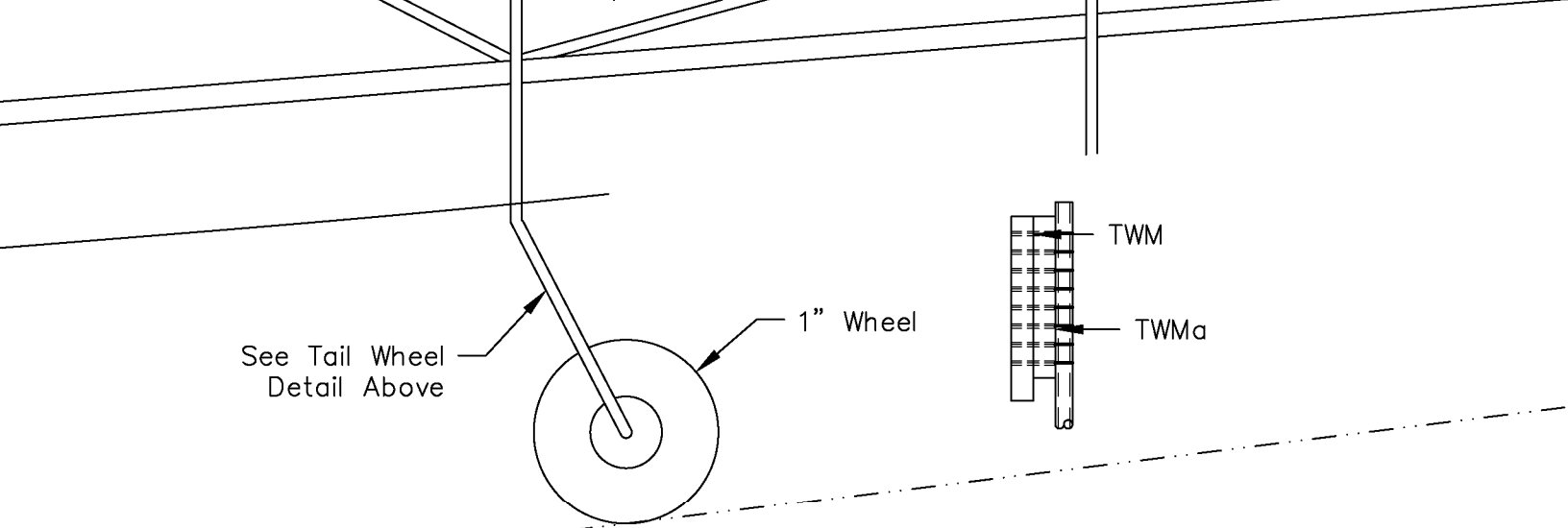
3/32 Sq. Balsa  
Stringers

Gun Barrels are  
1/8 Heat Shrink  
Tubing

reference square



Upper Stabilizer Fairing  
Cutting Pattern Make from Manila File Folder Paper  
2 Req.



Copyright 2024



and **ModelAviation**

Copying for resale of this drawing without  
the written approval or consent of AMA  
is expressly prohibited.

**Plan No. 1141**

B-17F "Memphis Belle"

Span: 60" | Length: 44 5/8"

Wing Area: 475 Sq. In.

Flying Weight: 422.8 Oz.

Designed. By: Pat Tritle for  
Model Aviation Magazine

Sheet 1 of 4 © 9-25-2023