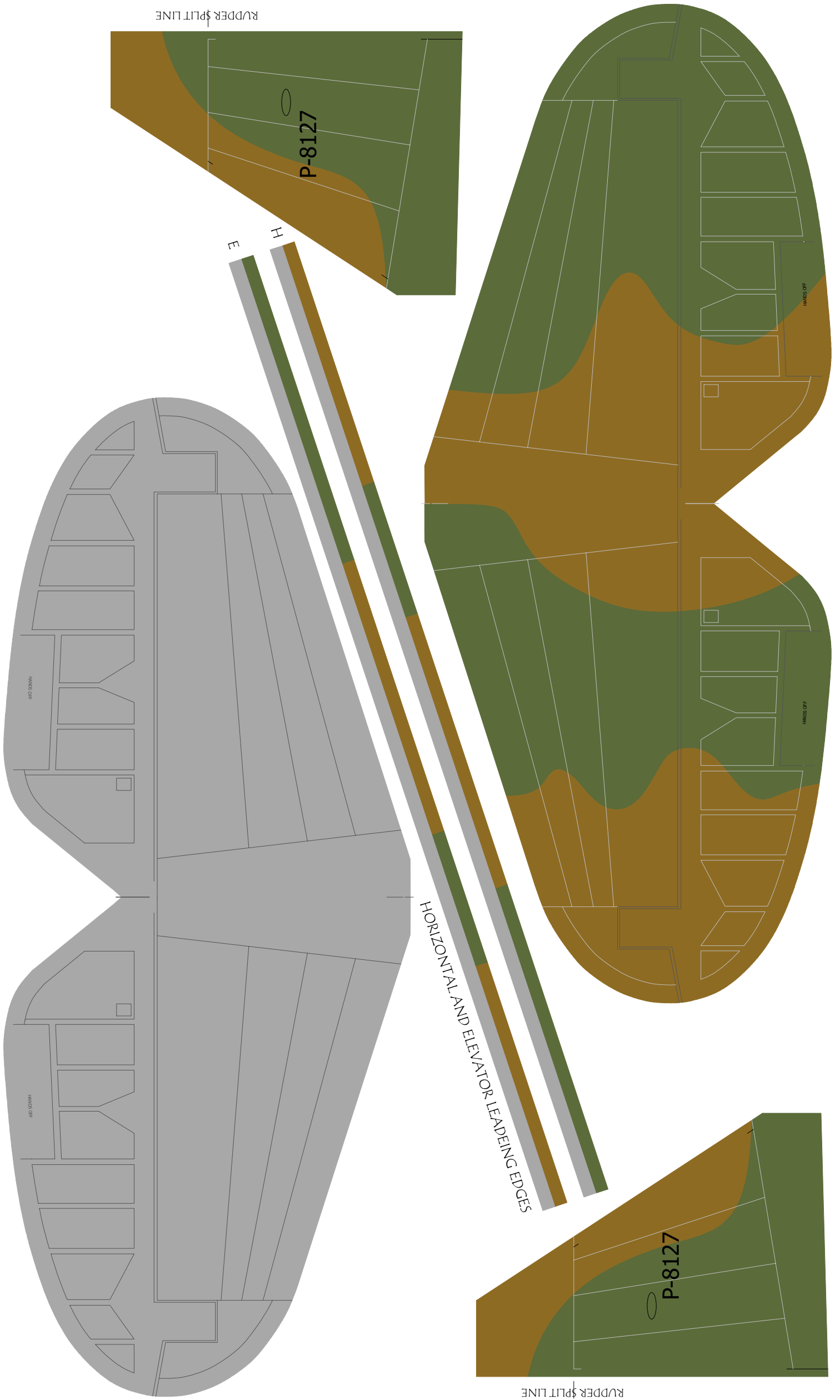


PARK FLYER P-40 C AVG LIVERY TISSUE AND COVERING INSTRUCTIONS

1. FLYING TIGER TEMPLATES ARE PRINTED ON WHITE TISSUE
2. ADHERE TISSUE TO EITHER 8.5" X 11" OR 8.5" X 14" SHEETS (PER THE SHEET NOTES) USING TEMPORARY SPRAY ADHESIVE.
3. PRINT IN COLOR WITHOUT BOARDERS AND ALLOW TIME FOR INK TO DRY- LIGHTLY COAT THE SHEET WITH KRYLON CRYSTAL CLEAR SPRAY TO HELP SEAL THE INK.
4. TRIM ALONG PART OUTLINE WHILE STILL ATTACHED TO THE SHEET, CAREFULLY REMOVE PAPER SHEET BEFORE APPLYING TO MODEL.
5. USE THE MARKS ON EACH END OF THE PART- THEY ARE SPACES 3/32" APART AND LINE UP WITH STRINGERS.
6. SHRINK AND THEN SEAL THE TISSUE ON THE MODEL WITH KRYLON CRYSTAL CLEAR SPRAY.
7. PRINT AVG TIGER AND SHARK MOUTH ON DOUBLE LAYERED TISSUE. TRIM ALONG OUTSIDE PART EDGE (AND INSIDE FOR THE TOP TEETH). GLUE TO THE FUSE IN PLACE OVER THE APPROPRIATE GREY COLORED AREA
8. PRINT THE WING FILLET SHEET ON LIGHT CARDSTOCK AND CUT OUT AND INSTALL.
9. PRINT THE CANOPY SHEET ON STANDARD PAPER.
10. CUT OUT ALONG THE OUTSIDE BOX- FOLD ALONG THE DASHED LINE AND GLUE.
11. CUT OUT THE INTERIOR WINDOW PANELS AND THEN GLUE THE SECTIONS (INTERIOR SIDE DOWN) TO CLEAR 3 MILL PLASTIC SHEET.
12. TRIM AROUND THE OUTSIDE OF THE EACH OF THE THREE MAIN PANELS.
13. GLUE THE REAR CANOPY INNER PART BETWEEN F6 AND F7. THEN GLUE THE REAR CANOPY IN PLACE.
14. GLUE THE FRONT WINDSCREEN FIRST, FOLLOWED BY THE CENTER CANOPY TO THE HATCH.

ADDITIONAL COVERING INFO FOUND HERE:

<https://www.youtube.com/watch?v=0980sL-UjC0>



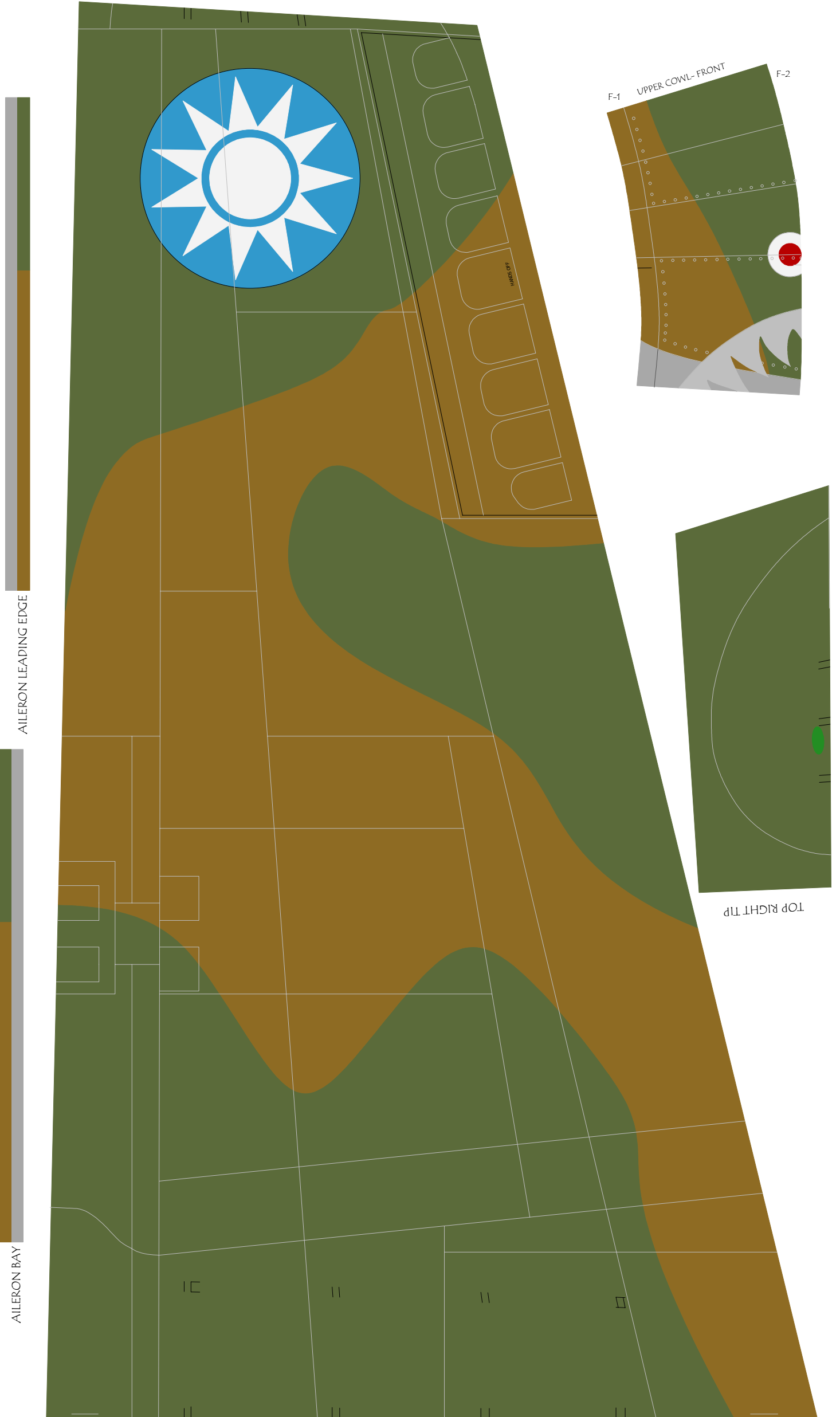
WHITE TISSUE PRINTED ON 8.5" x 14" BORDERLESS SHEET

TOP LEFT WING

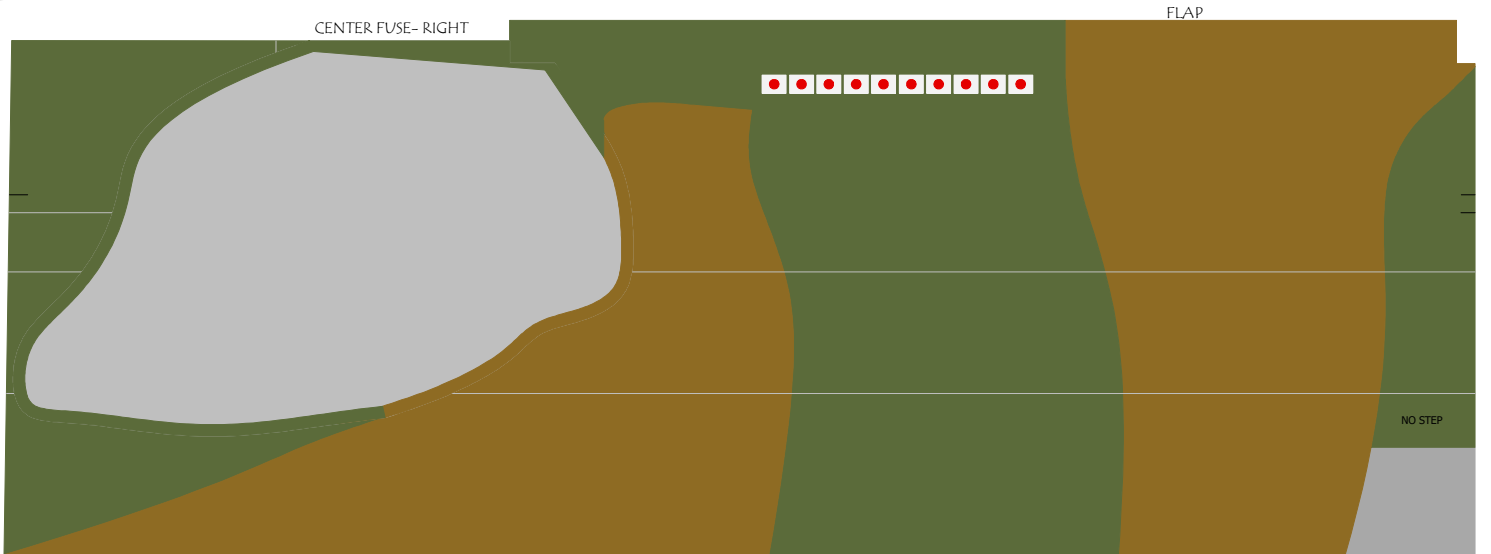
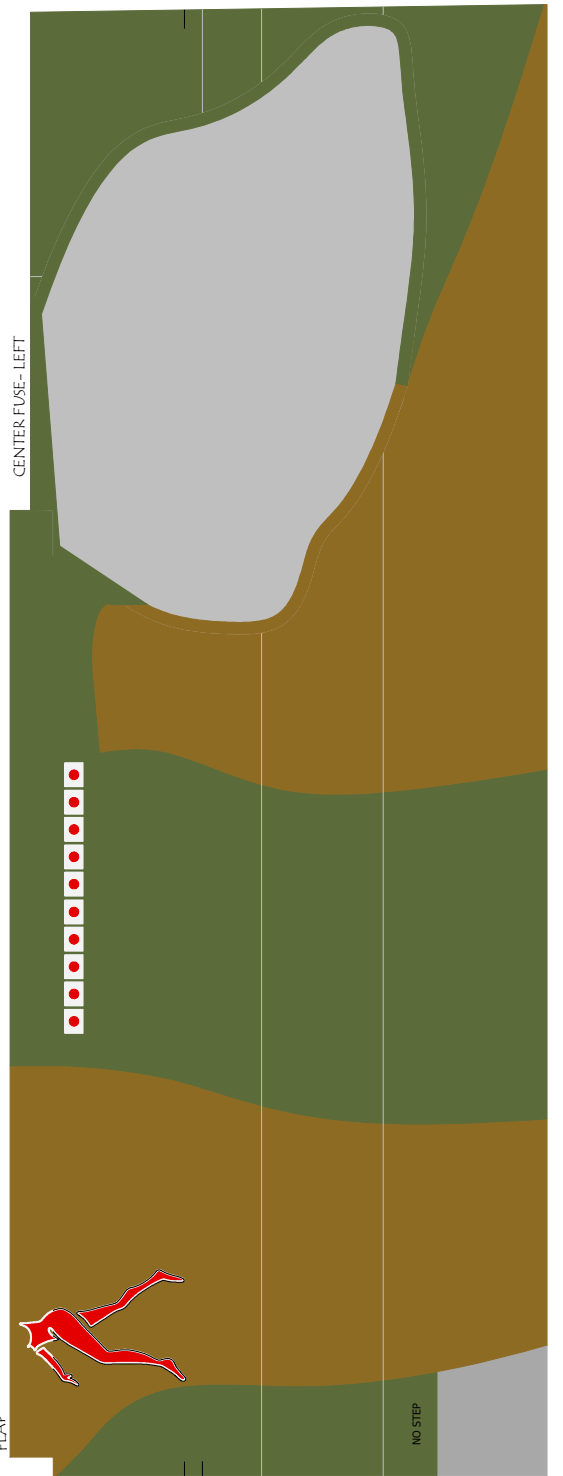
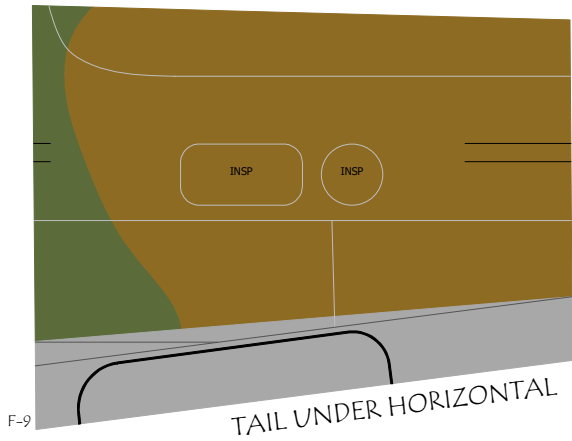
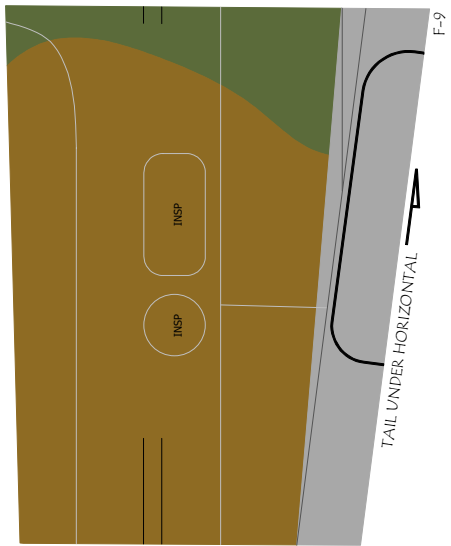
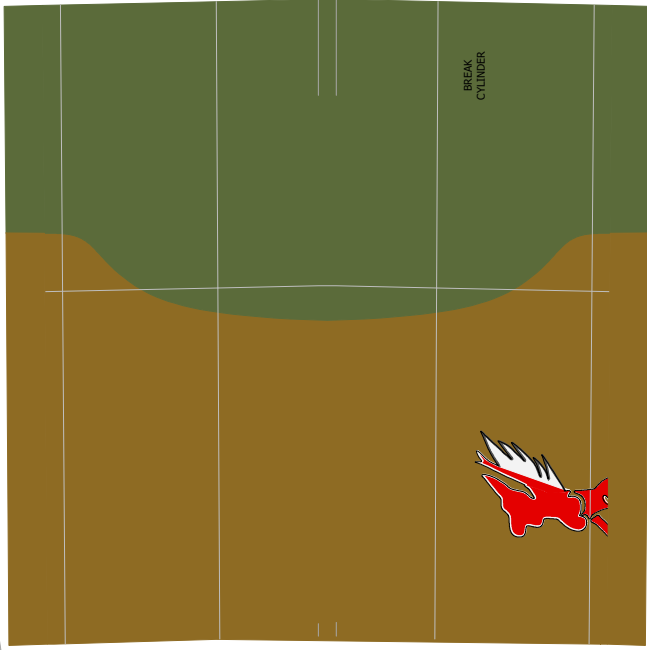
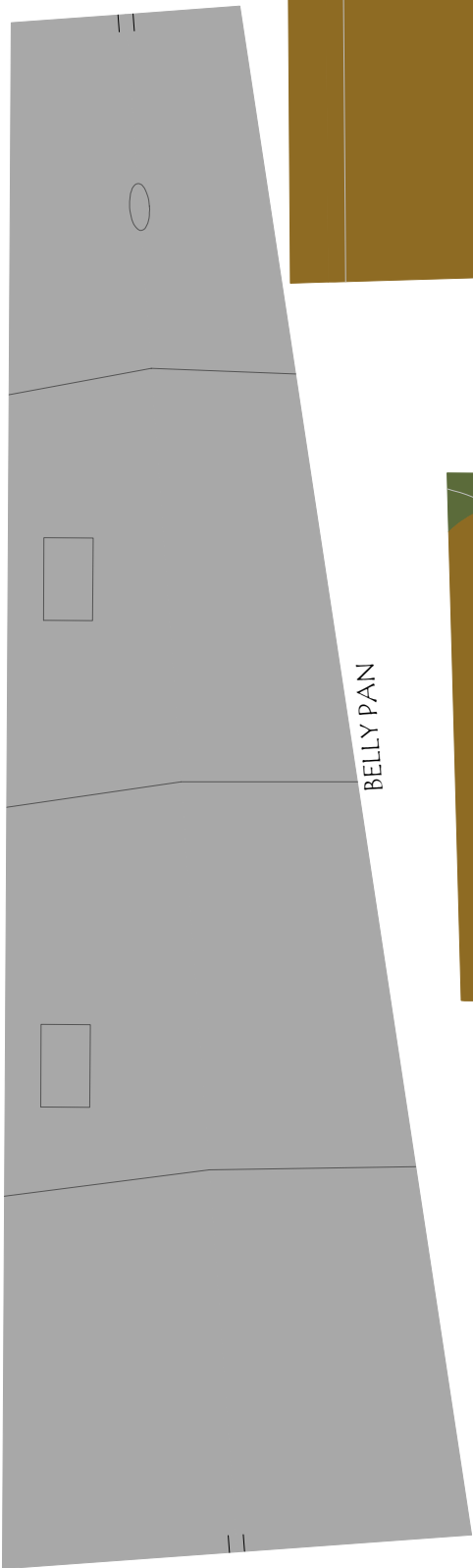


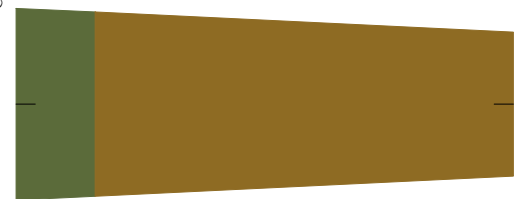
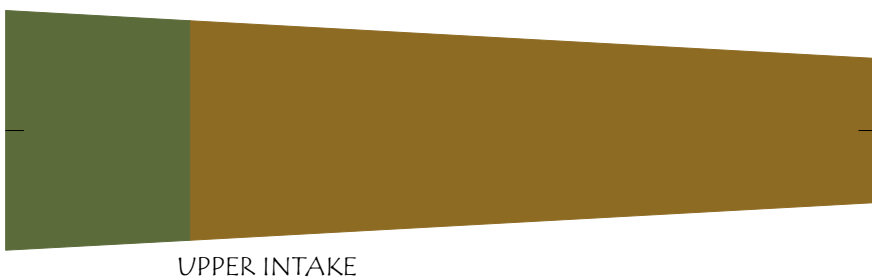
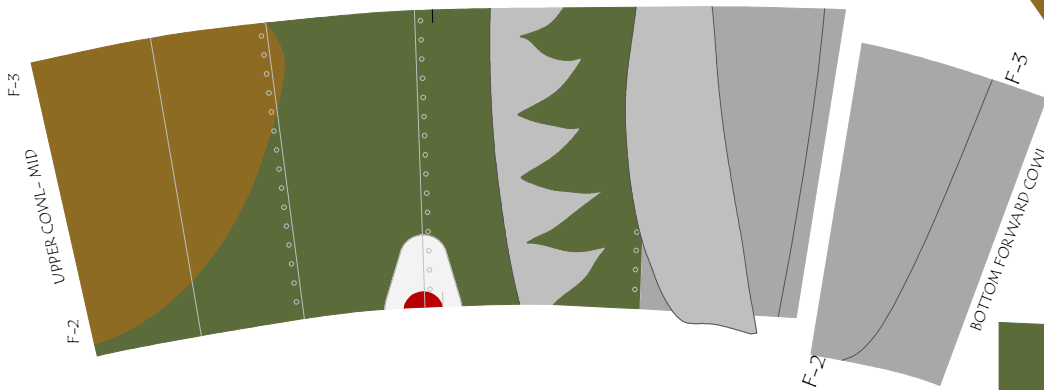
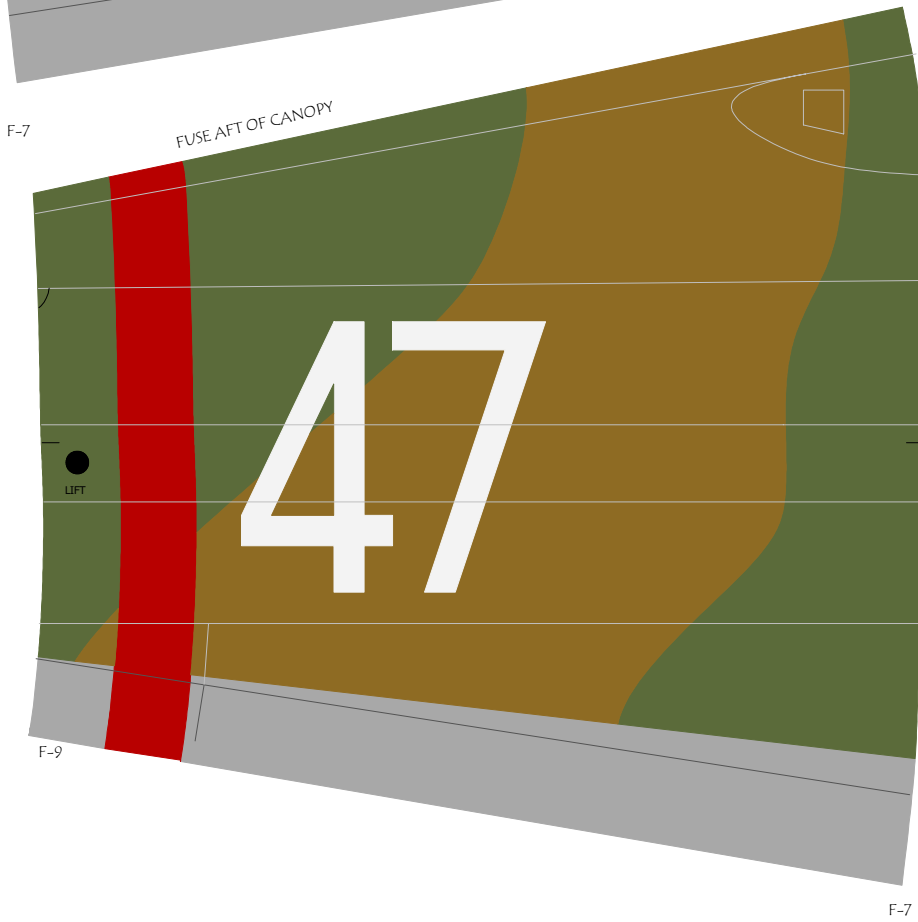
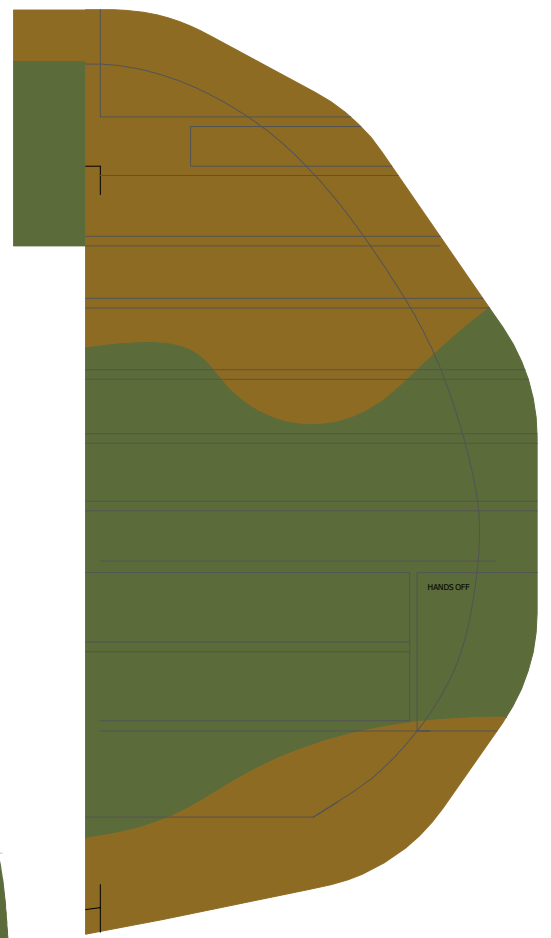
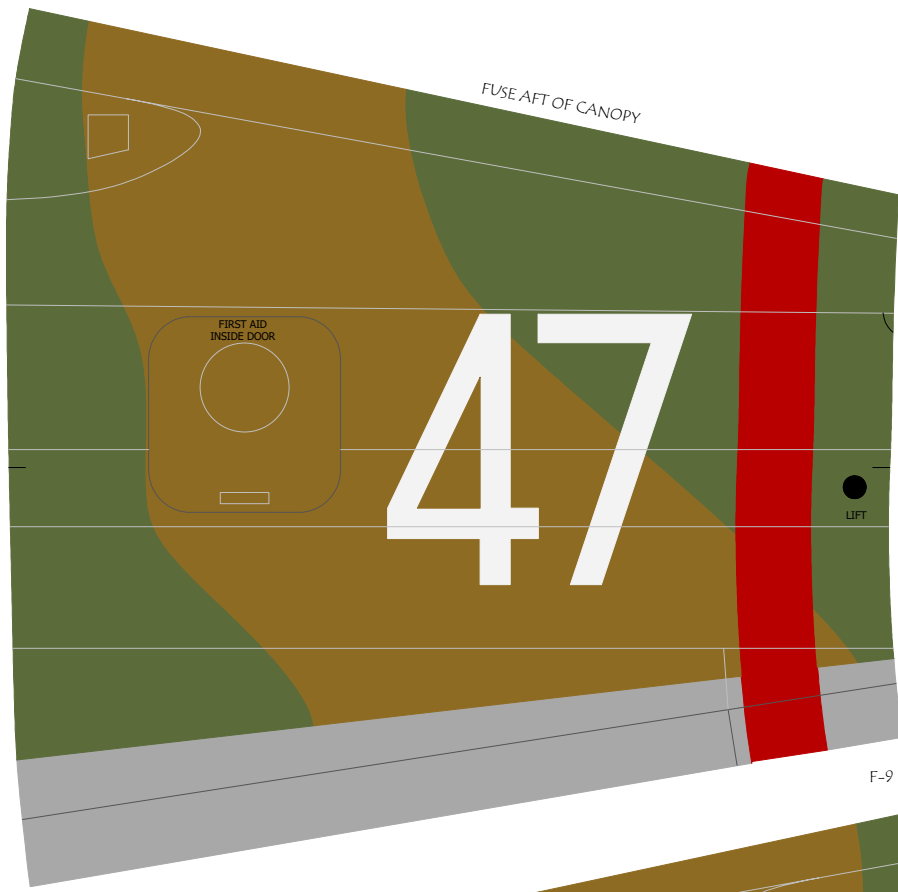
WHITE TISSUE PRINTED ON 8.5" x 14" BORDERLESS SHEET

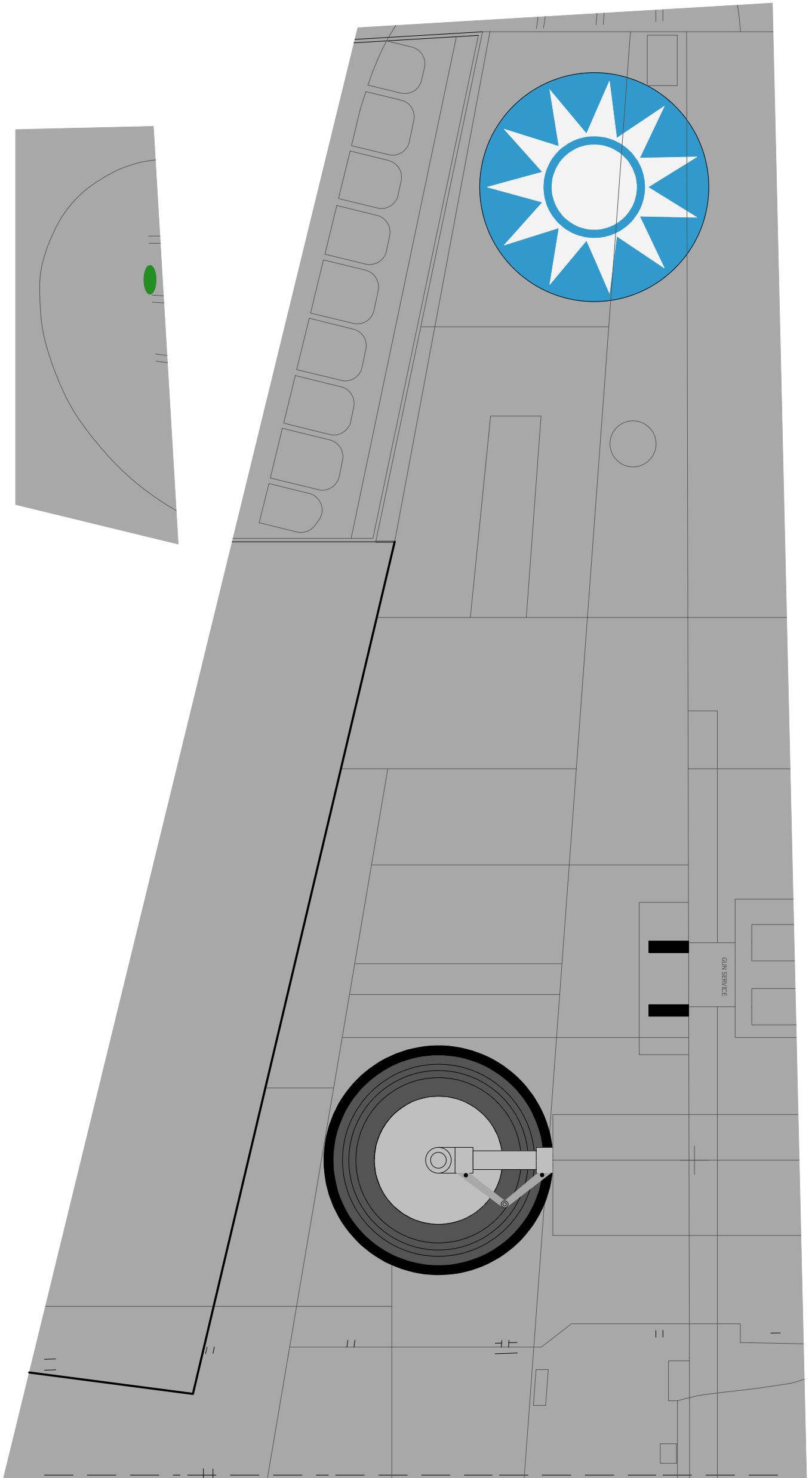
TOP RIGHT WING



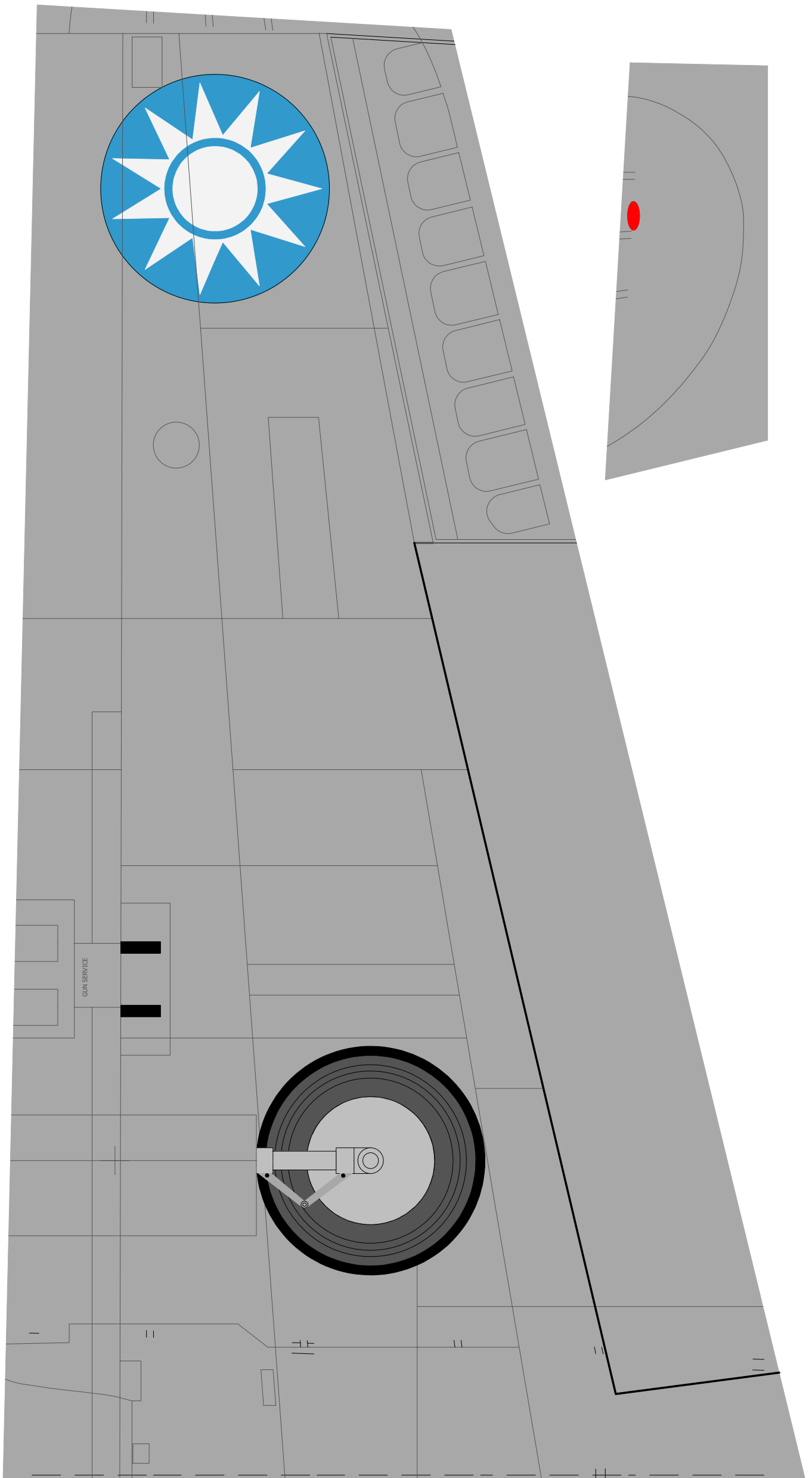
WHITE TISSUE PRINTED ON 8.5" x 14" BORDERLESS SHEET



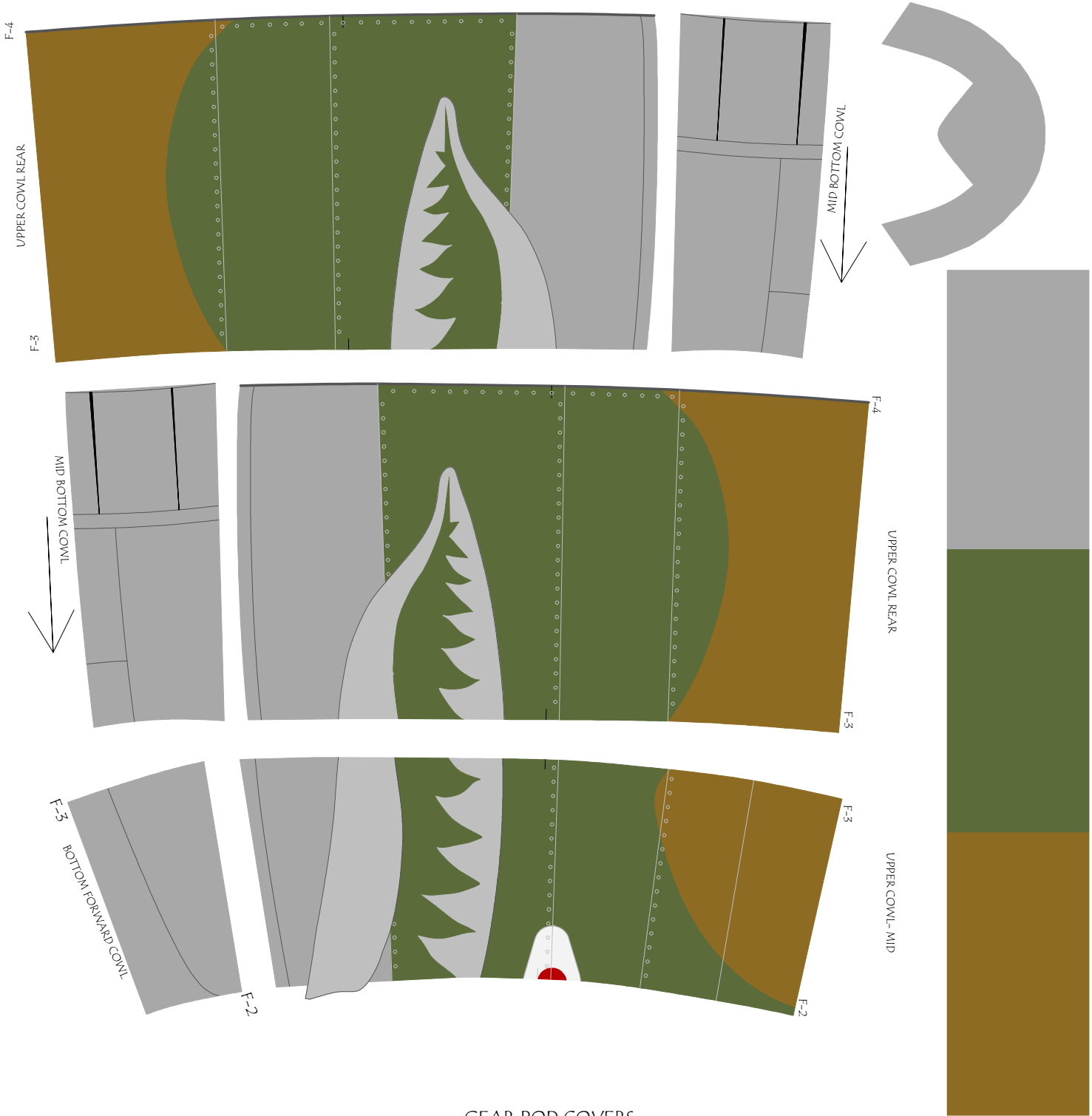




WHITE TISSUE PRINTED ON 8.5" x 14" BOARDERLESS SHEET



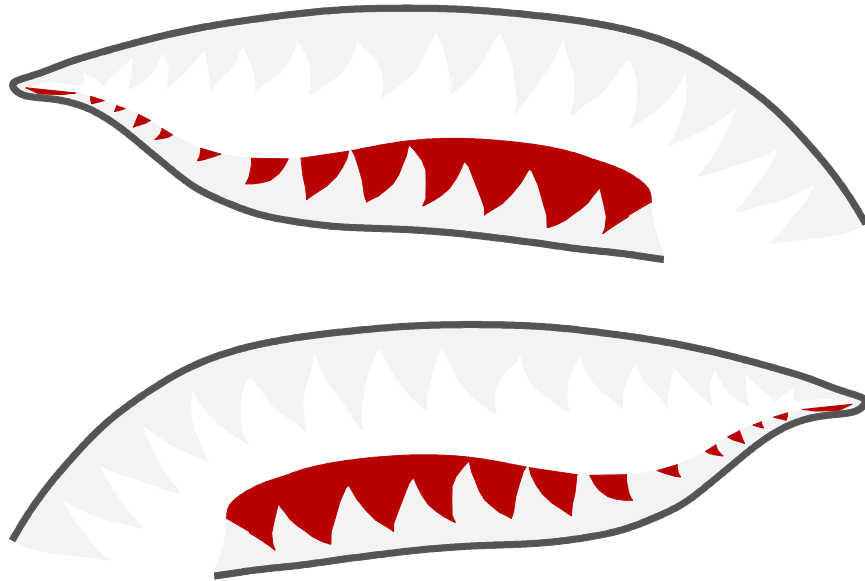
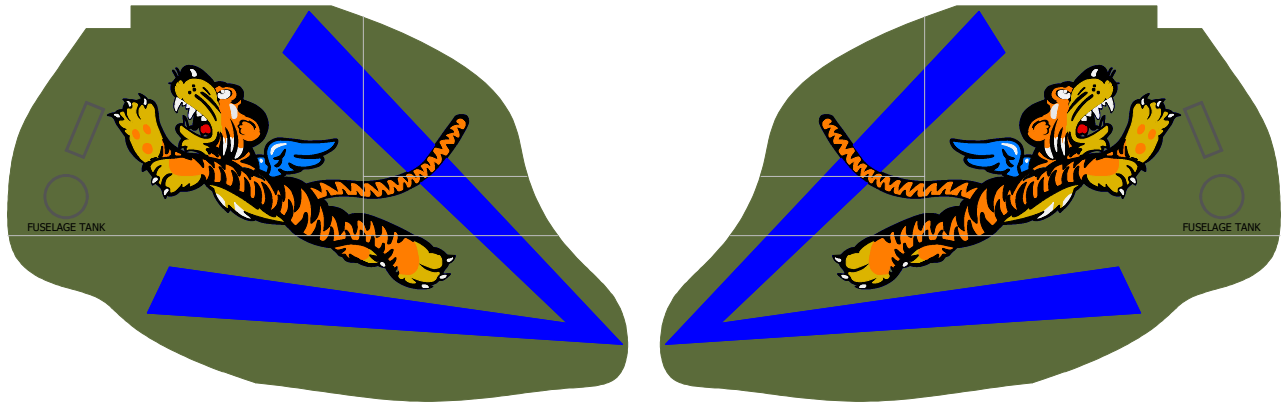
WHITE TISSUE PRINTED ON 8.5" x 14" BORDERLESS SHEET



GEAR POD COVERS

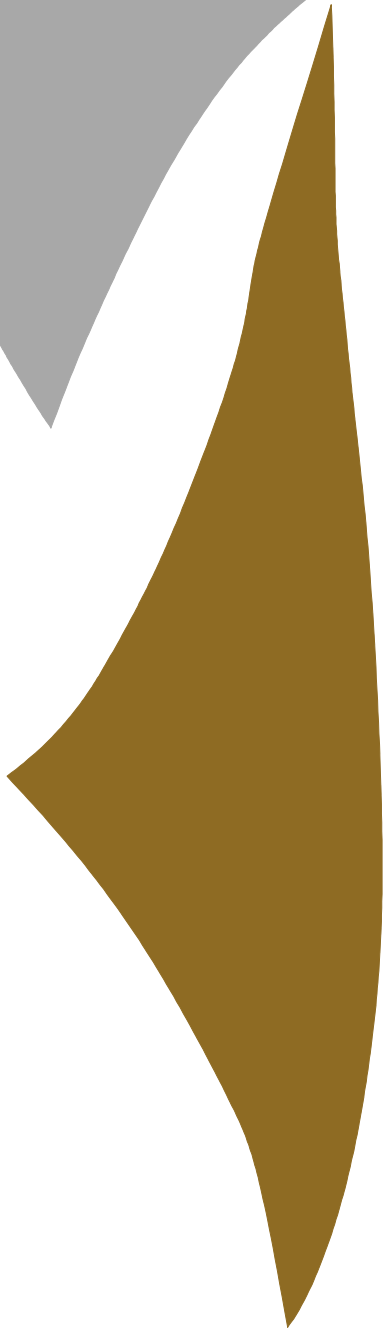
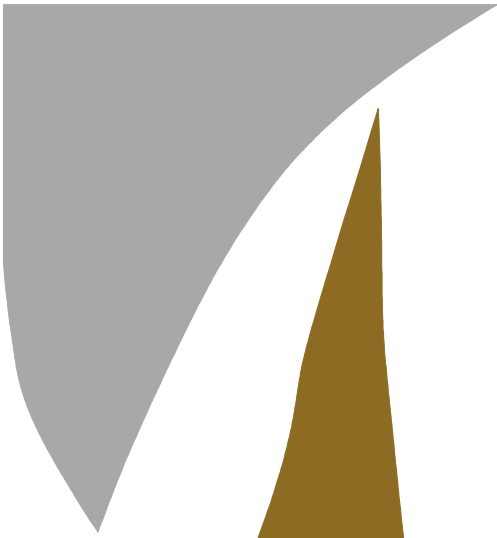


WHITE TISSUE PRINTED ON 8.5" x 11" BORDERLESS SHEET



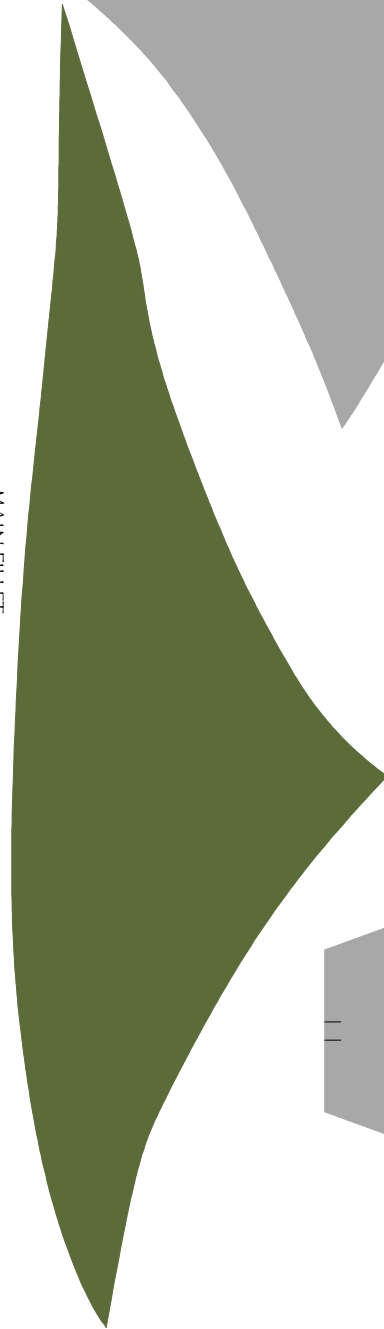
2 LAYERS OF WHITE TISSUE PRINTED ON 8.5" x 11" BORDERLESS SHEET

← BOTTOM REAR FILLET

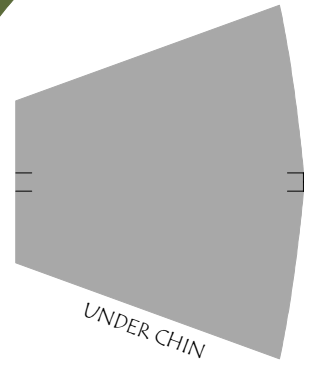


← MAIN FILLET

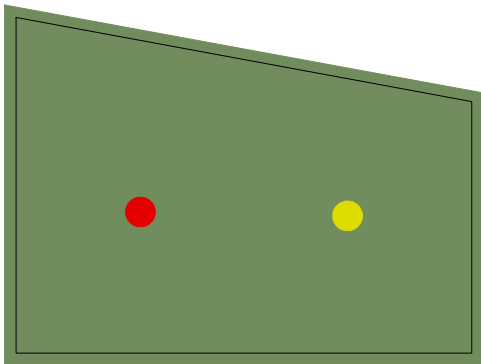
← BOTTOM REAR FILLET



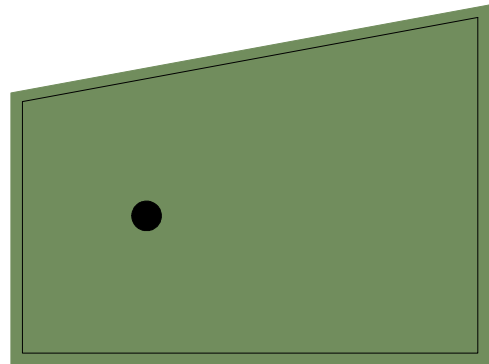
← MAIN FILLET



UNDER CHIN

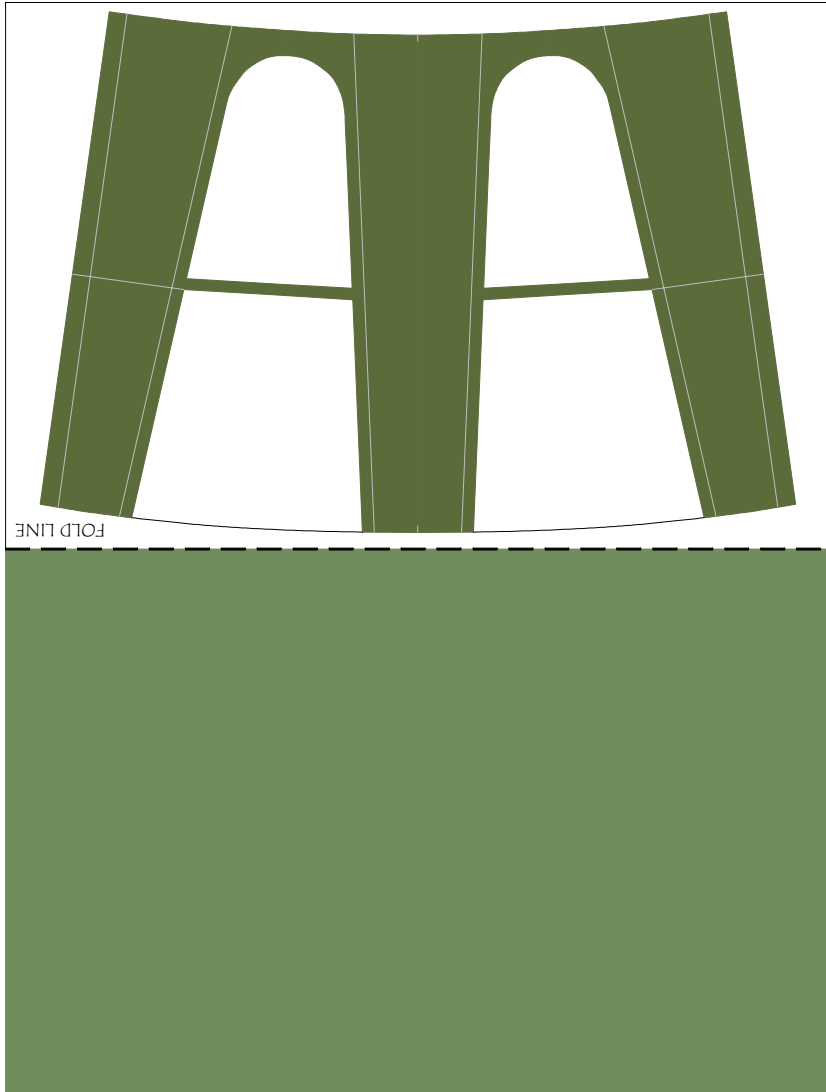
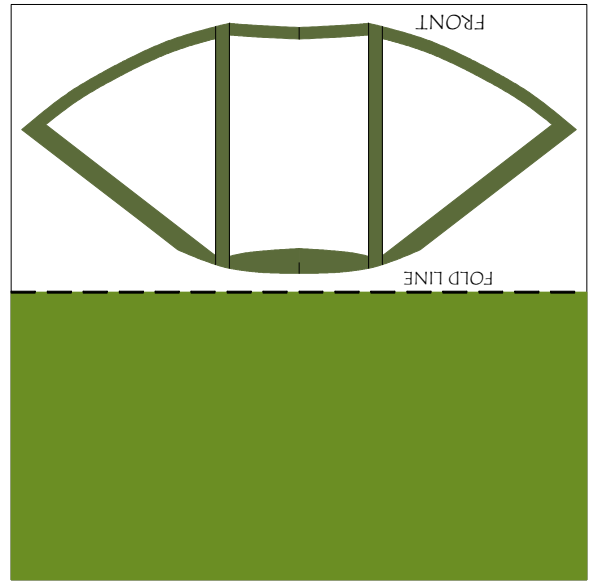
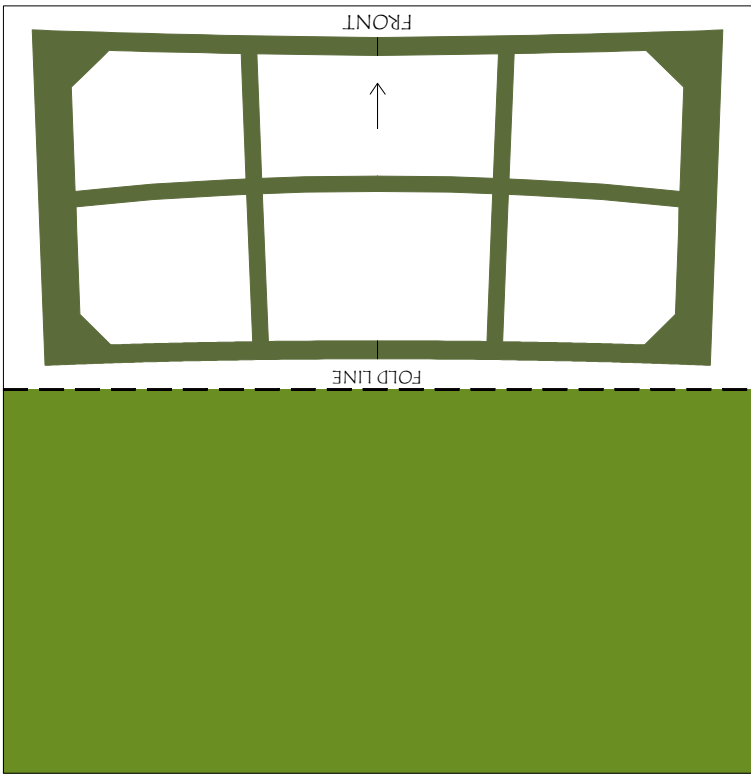


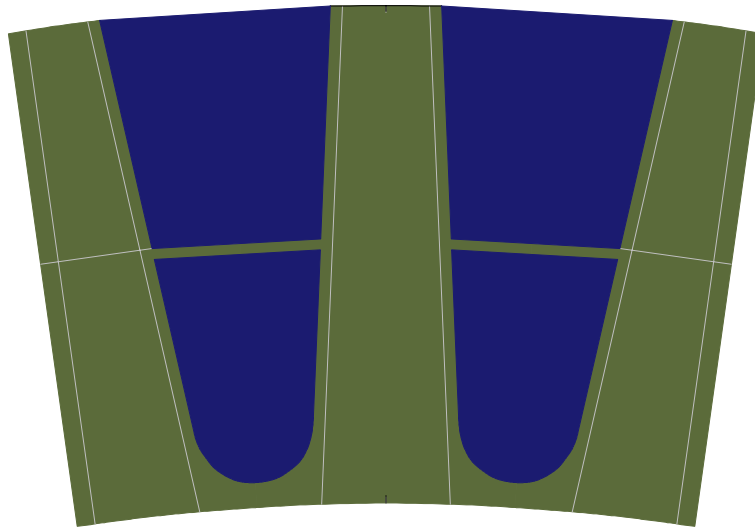
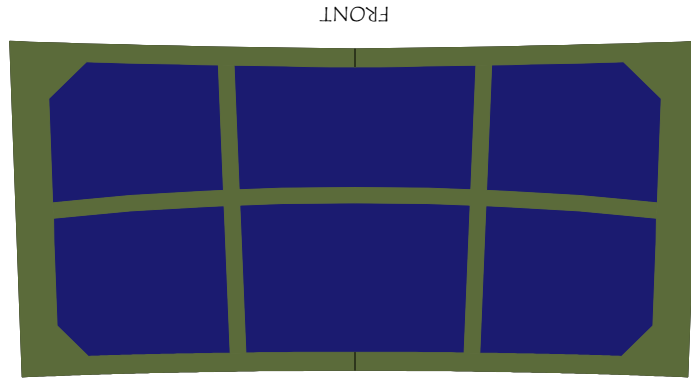
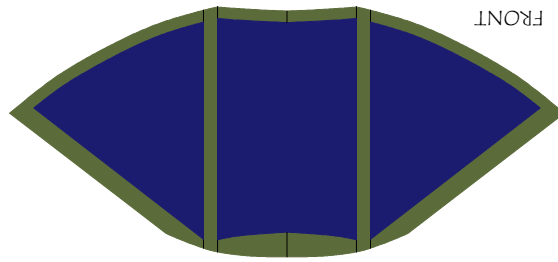
REAR CANOPY INNER



REAR CANOPY INNER

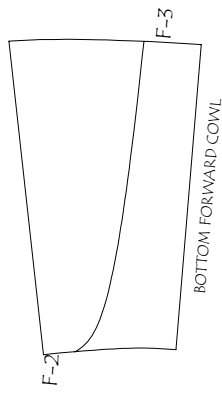
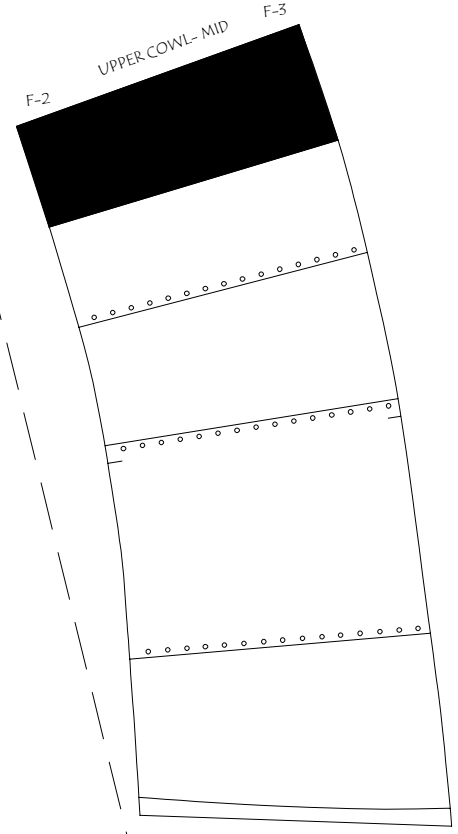
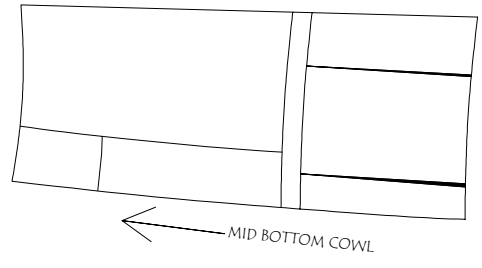
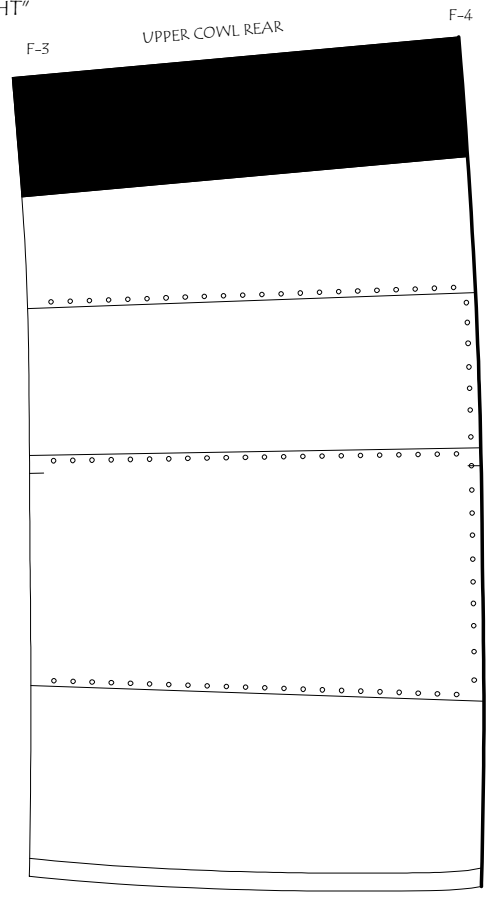
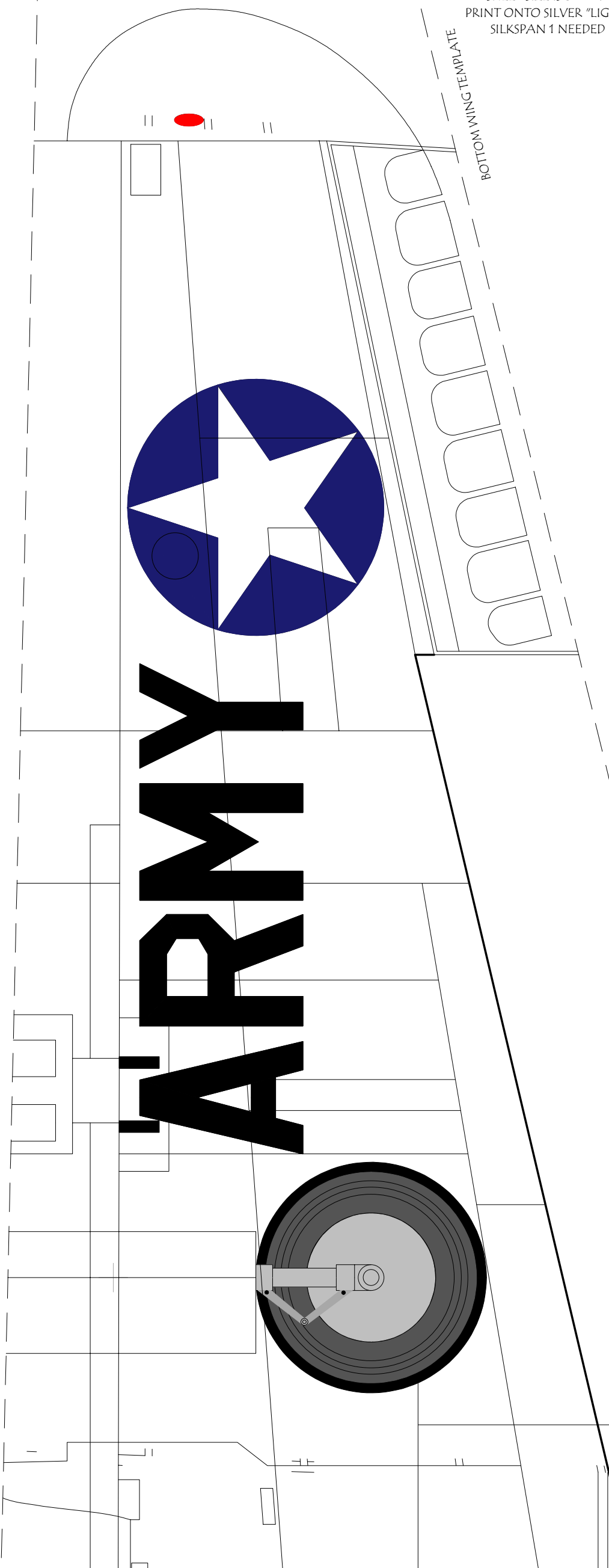
PRINT ON 8.5" x 11" BORDERLESS CARDSTOCK





ALTERNATE NON-CLEAR WINDO OPTION

SHEET SIZE IS 8.5"x14"
PRINT ONTO SILVER "LIGHT"
SILKSPAN 1 NEEDED

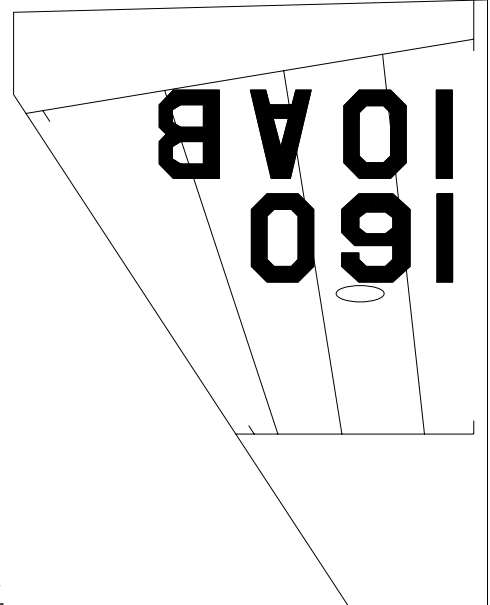
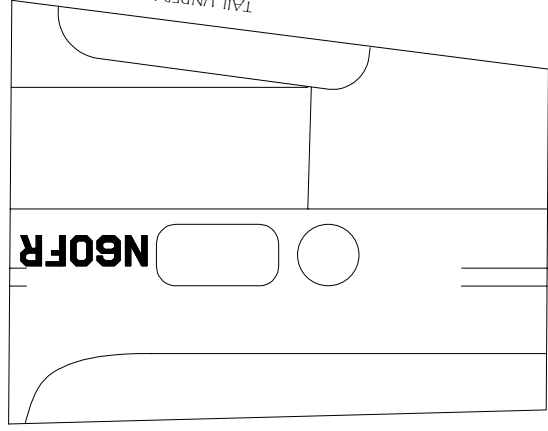


TISSUE OVERHANG OF 1/4" AT BOTTOM TO ALLOW FOR COVERAGE TO W-1



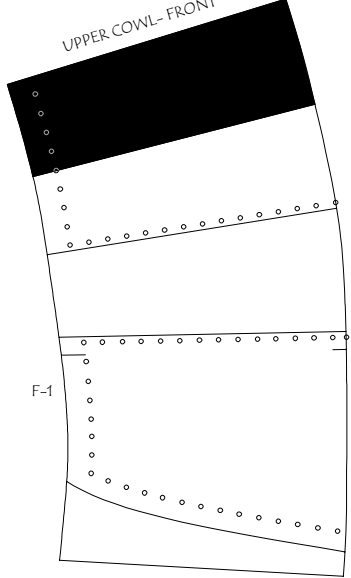
SHEET SIZE IS 8.5"x14"
PRINT ONTO SILVER "LIGHT"
SILKSPAN 1 NEEDED

TAIL UNDER HORIZONTAL F-9

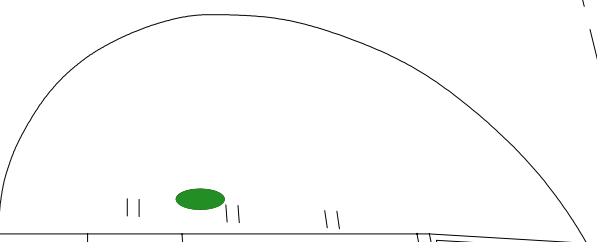
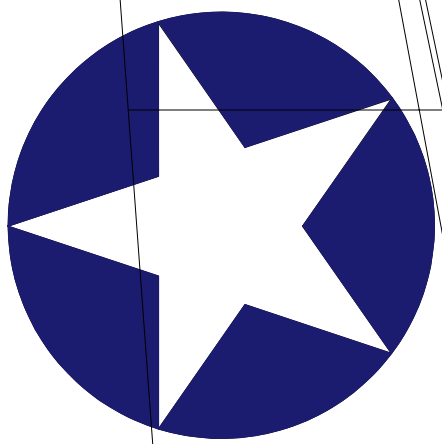


TOP WING TEMPLATE

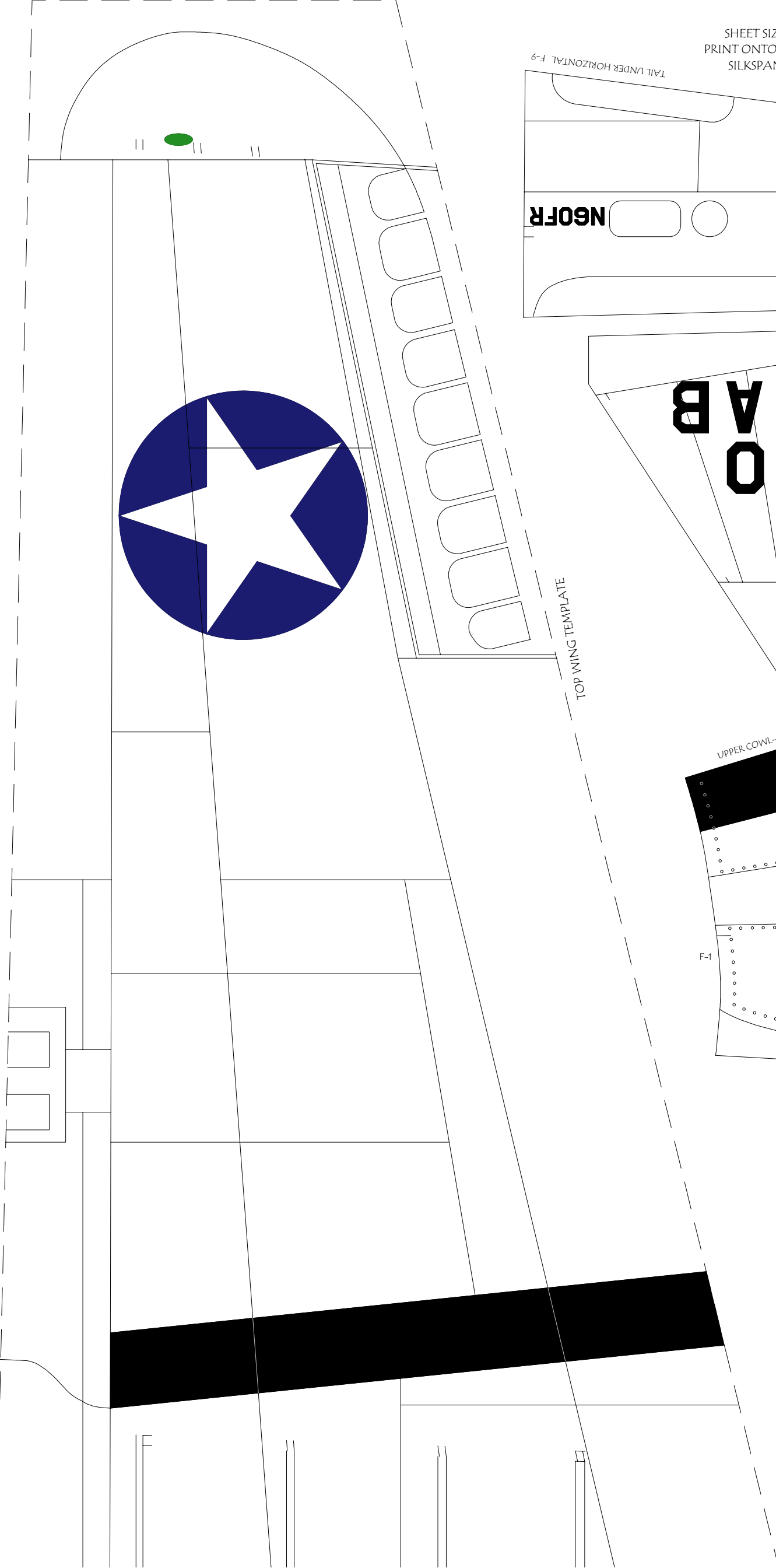
UPPER COWL-FRONT



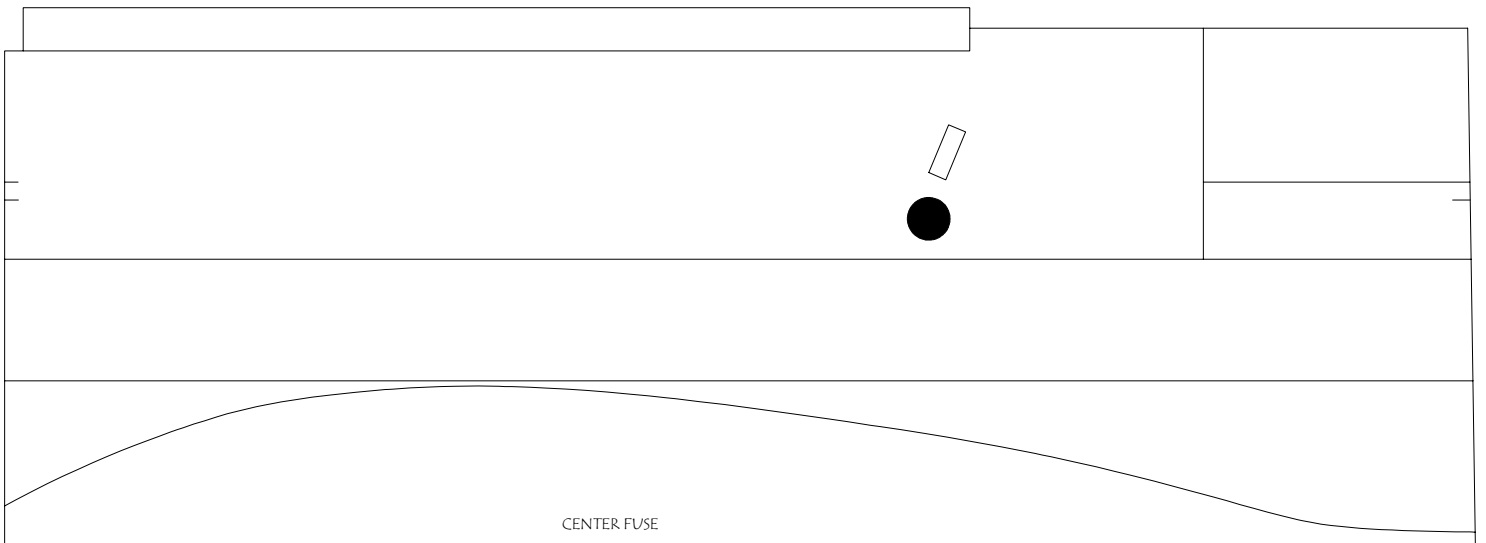
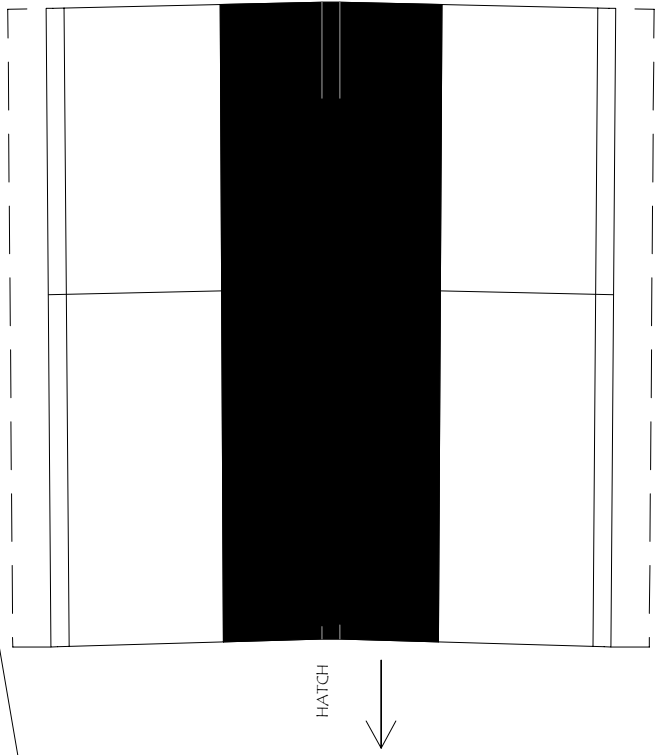
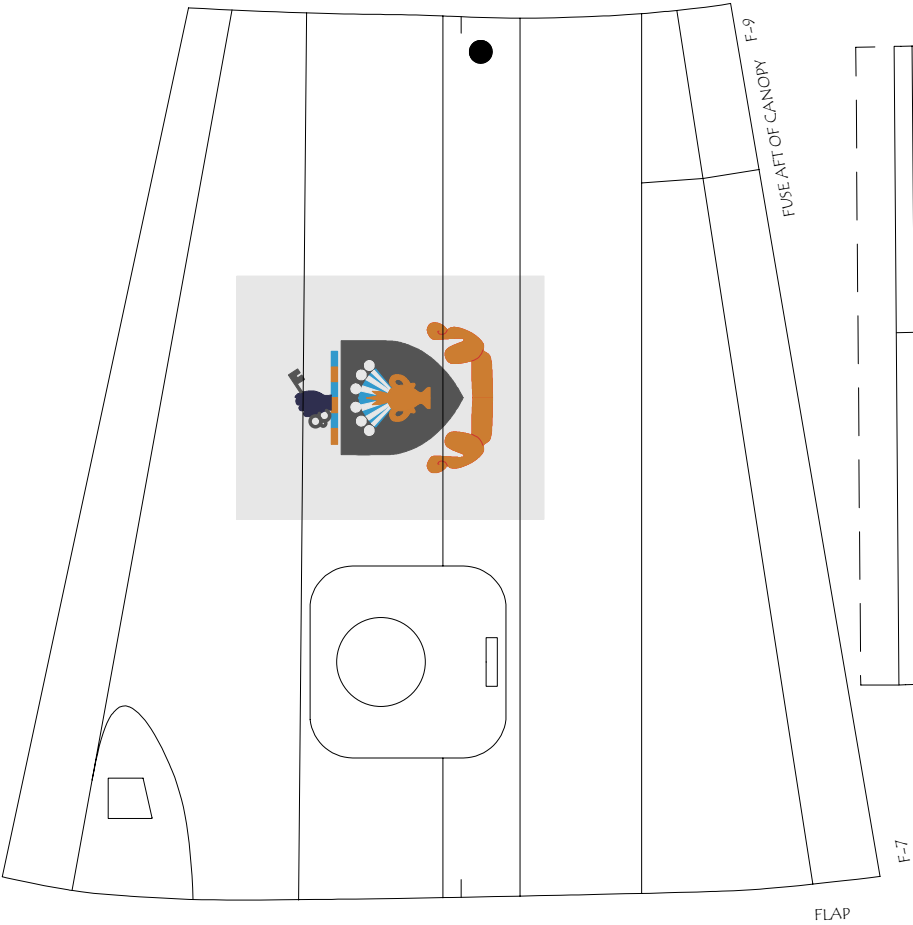
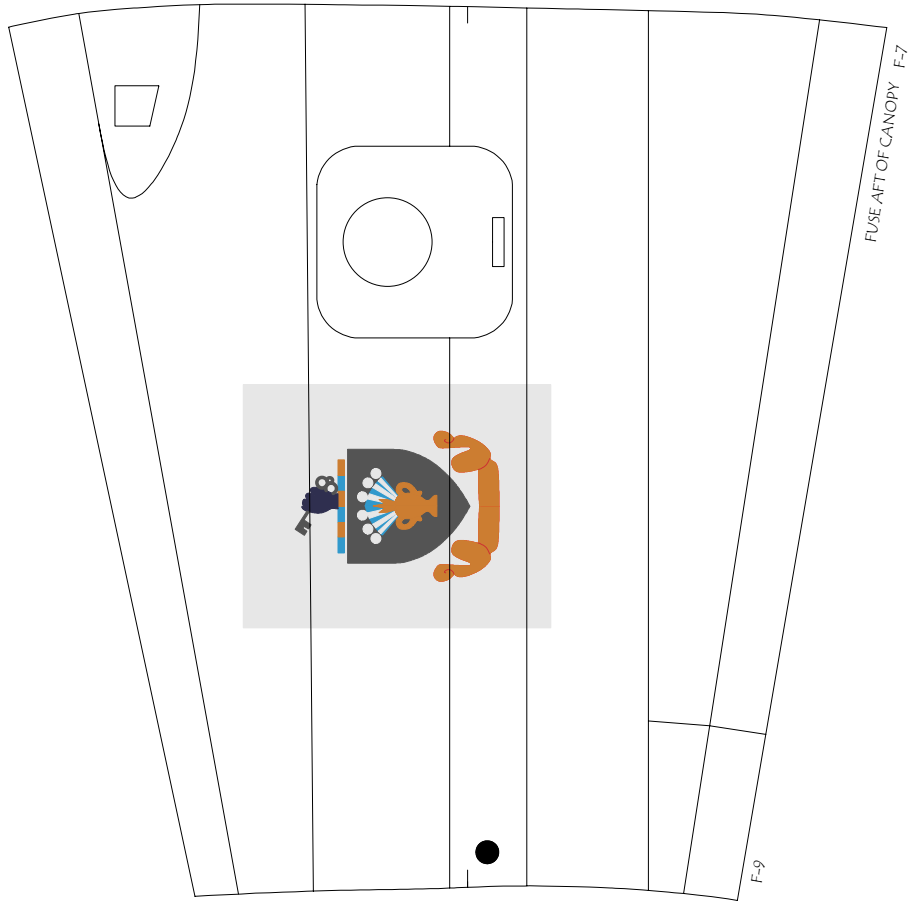
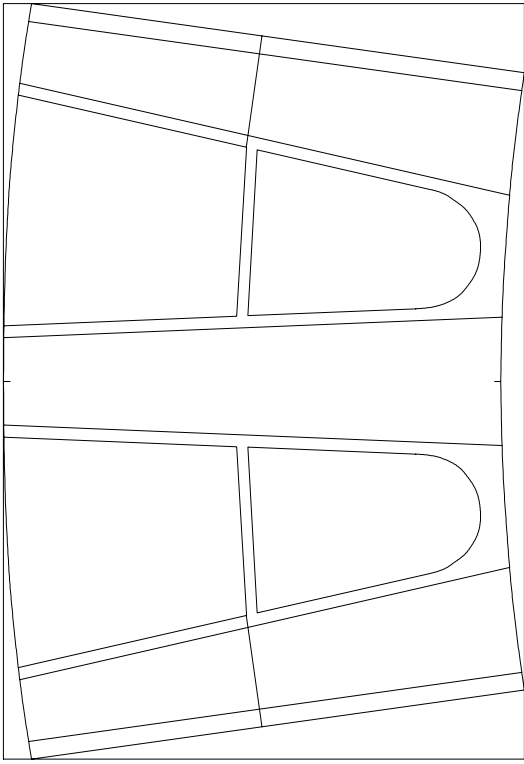
F-2



TISSUE OVERHANG OF 1/4" AT BOTTOM TO ALLOW FOR COVERAGE TO W-1

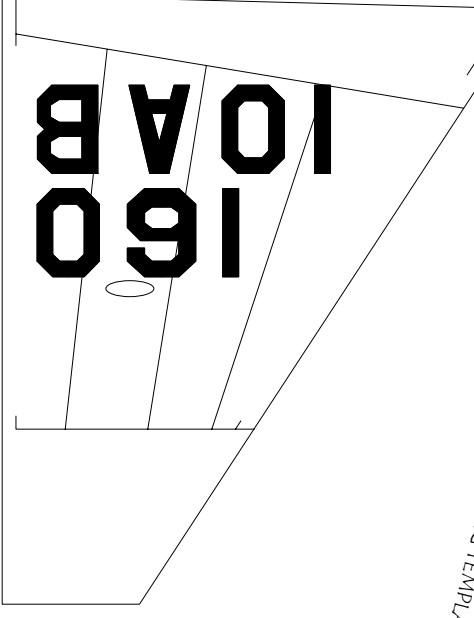
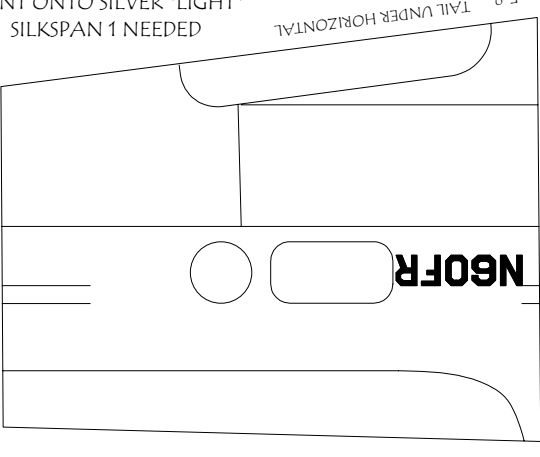


SHEET SIZE IS 8.5"x14"
PRINT ONTO SILVER "LIGHT"
SILKSPAN 1 NEEDED

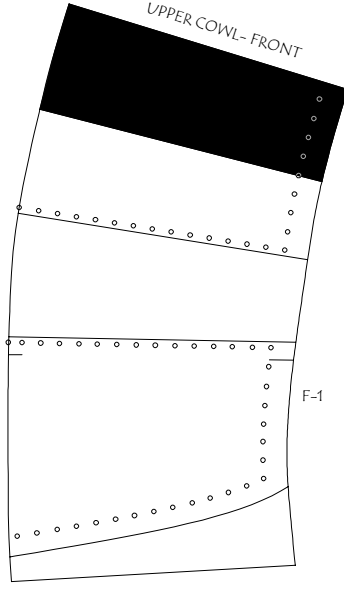


SHEET SIZE IS 8.5"x14"
PRINT ONTO SILVER "LIGHT"
SILKSPAN 1 NEEDED

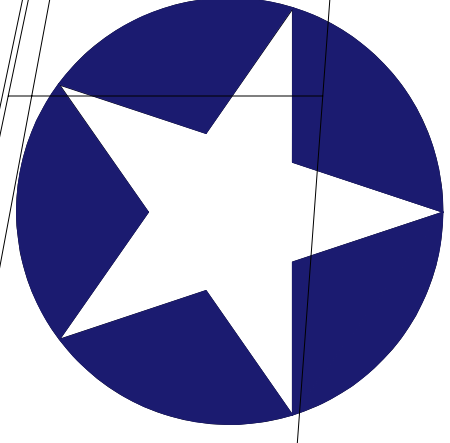
F-9
TAIL UNDER HORIZONTAL



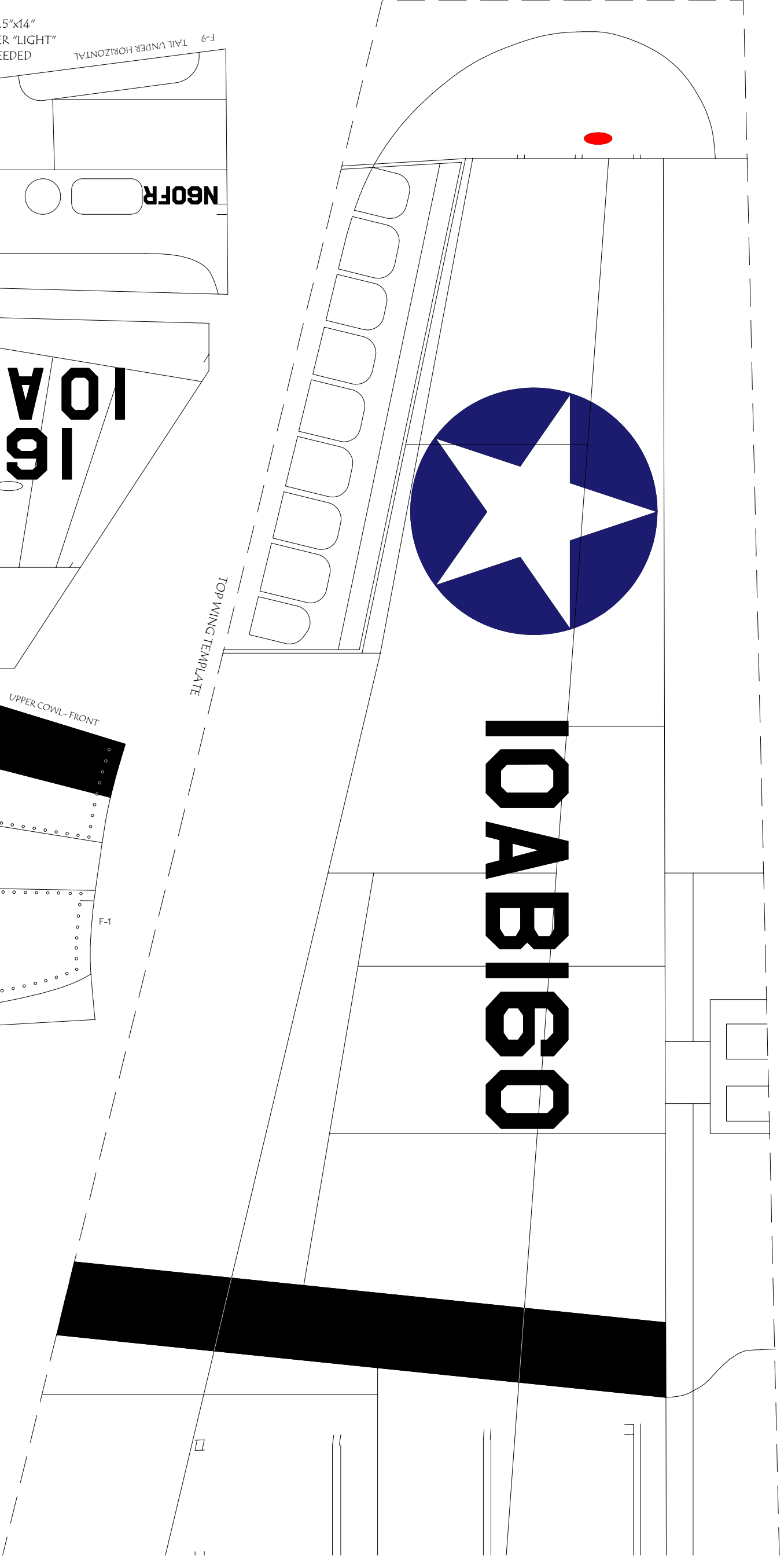
TOP WING TEMPLATE



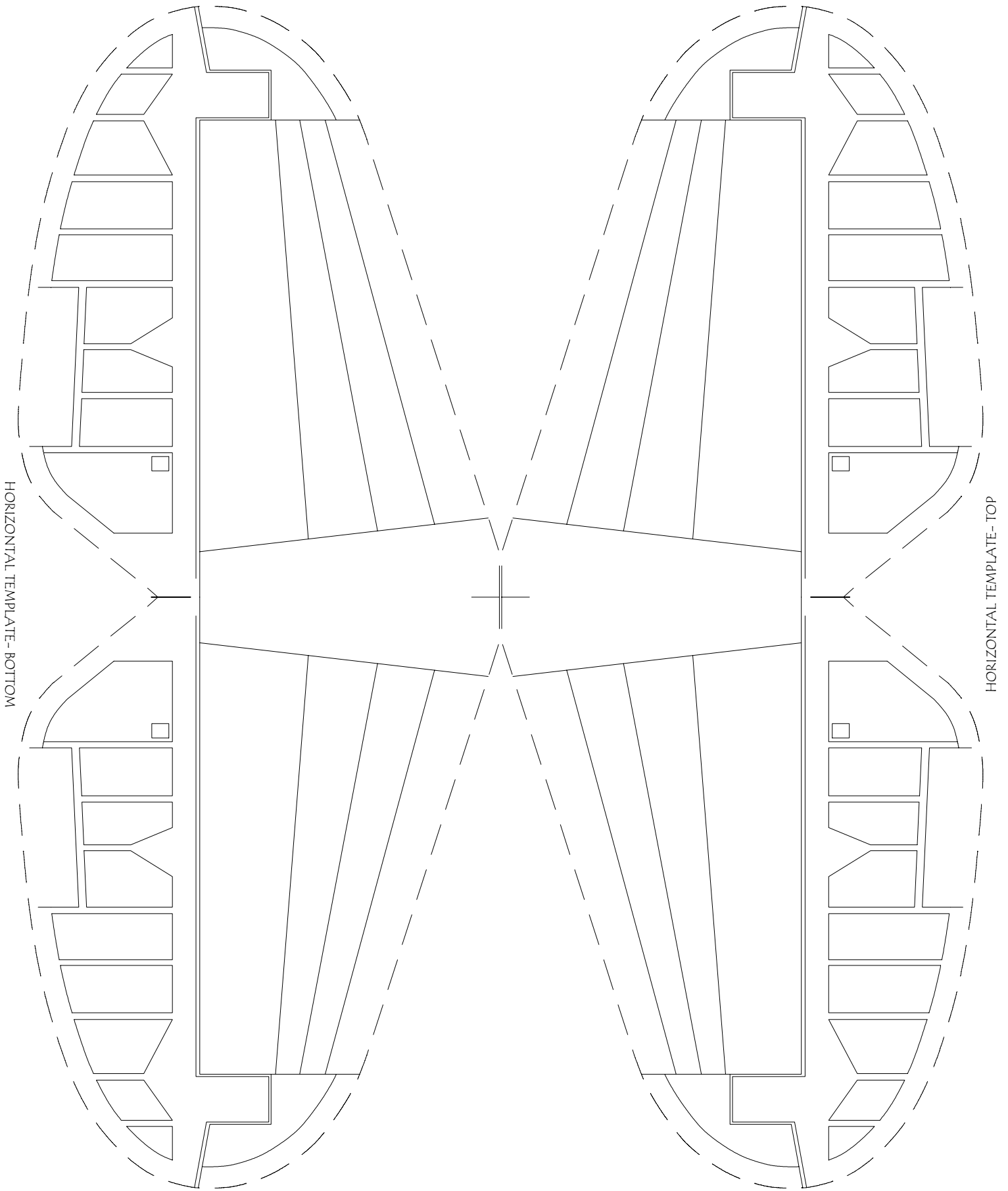
TISSUE OVERHANG OF 1/4" AT BOTTOM TO ALLOW FOR COVERAGE TO W-1



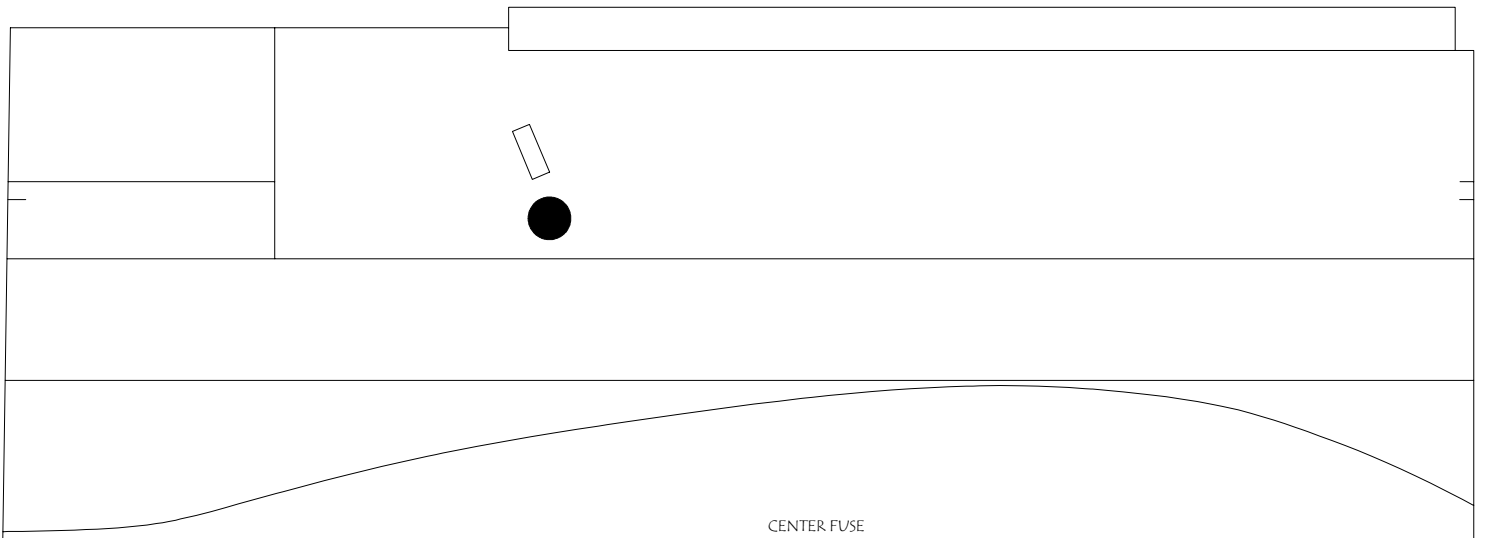
10AB160



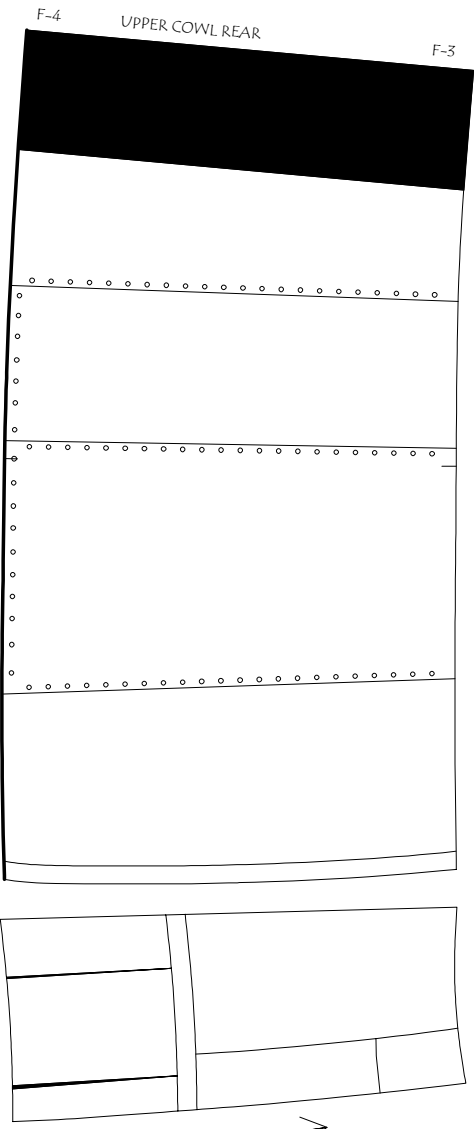
SHEET SIZE IS 8.5"x14"
PRINT ONTO SILVER "LIGHT"
SILKSPAN 1 NEEDED



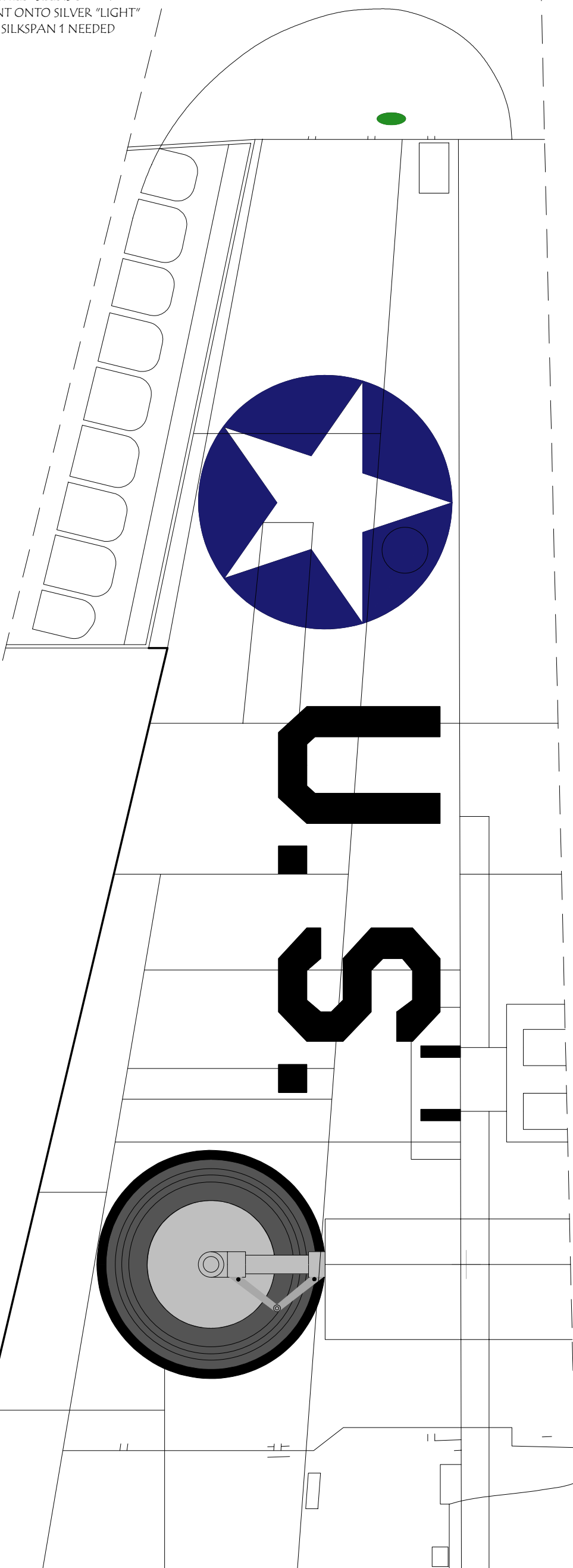
FLAP



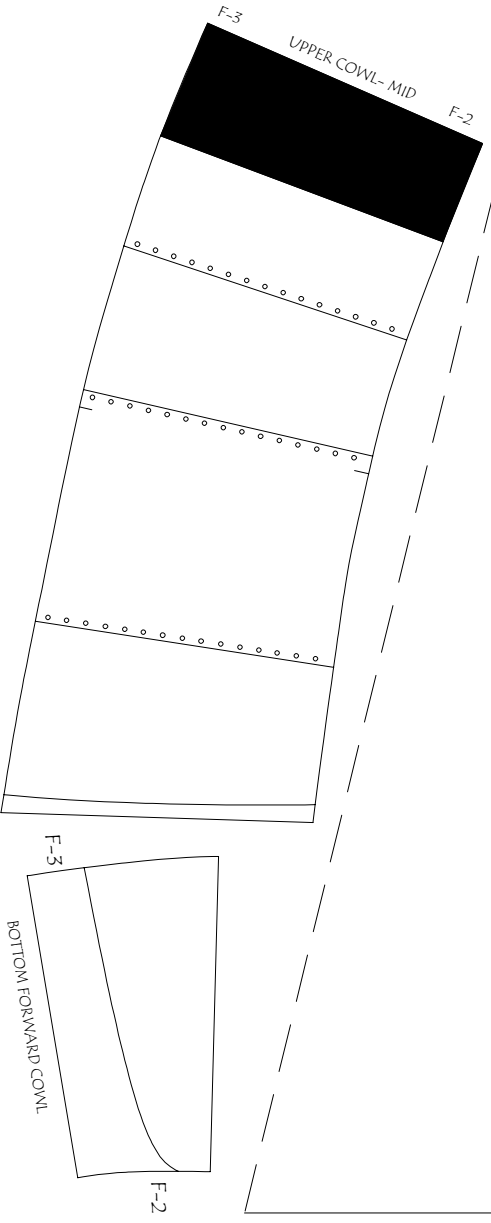
SHEET SIZE IS 8.5"x14"
PRINT ONTO SILVER "LIGHT"
SILKSPAN 1 NEEDED

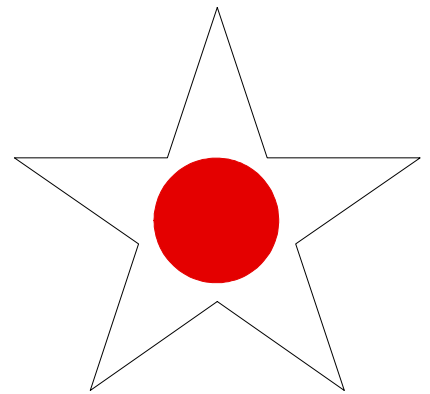
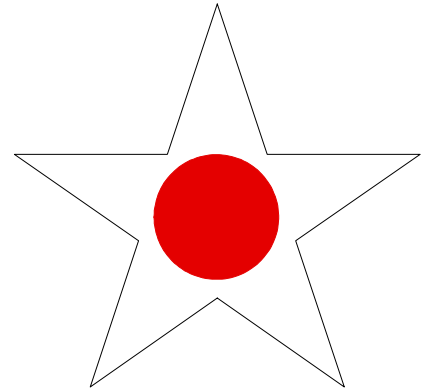
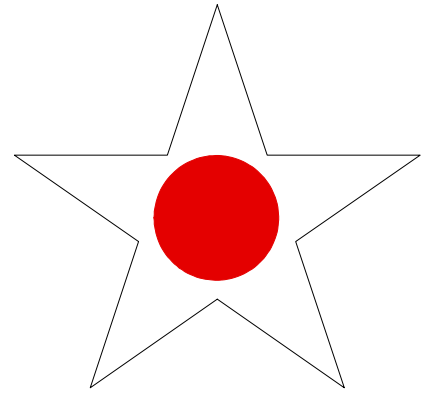
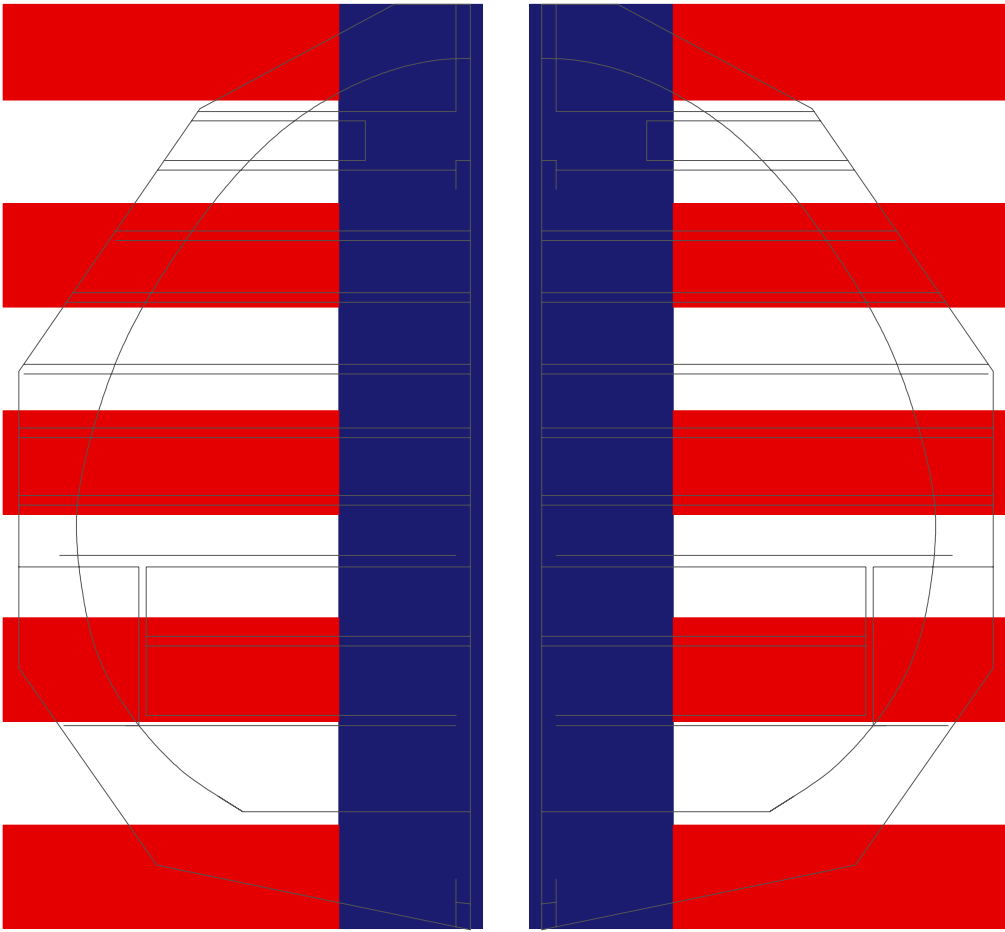


BOTTOM WING TEMPLATE



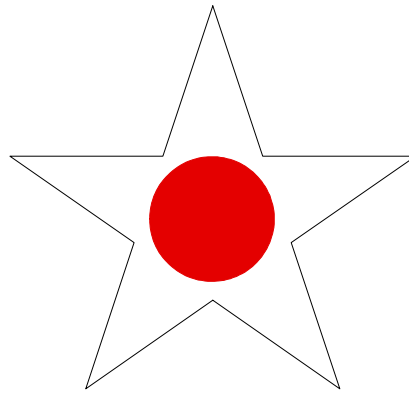
TISSUE OVERHANG OF 1/4" AT BOTTOM TO ALLOW FOR COVERAGE TO W-1

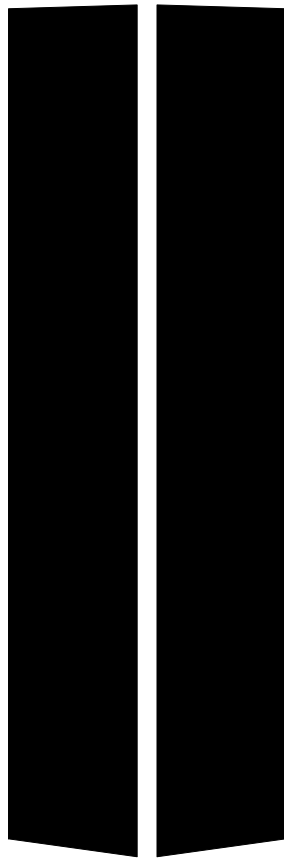
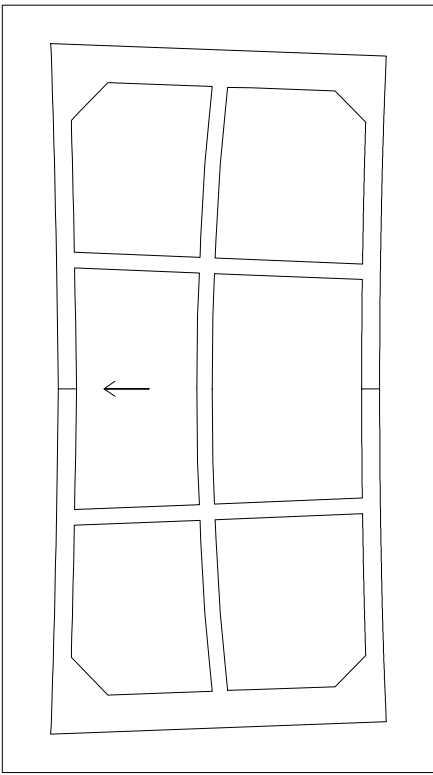




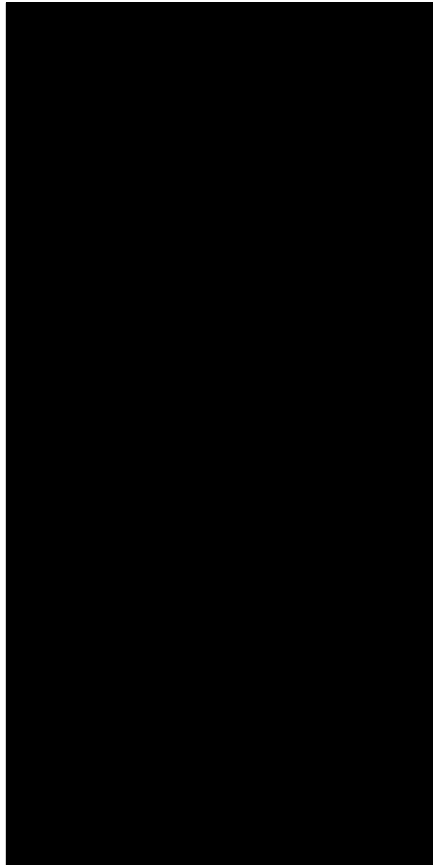
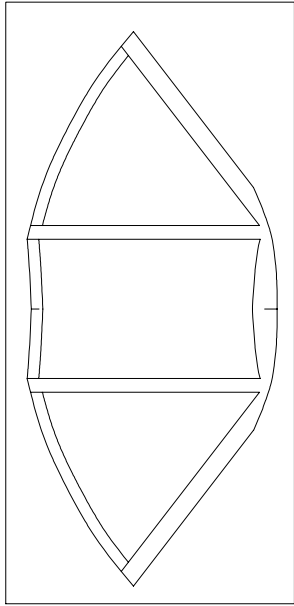
PRINT STARS AND THEN ADD TO
WINGS AFTER COVERED AND SHRUNK

SHEET SIZE IS 8.5" x 11"
2 LAYERS OF WHITE "LIGHT" SILKSPAN
1 NEEDED





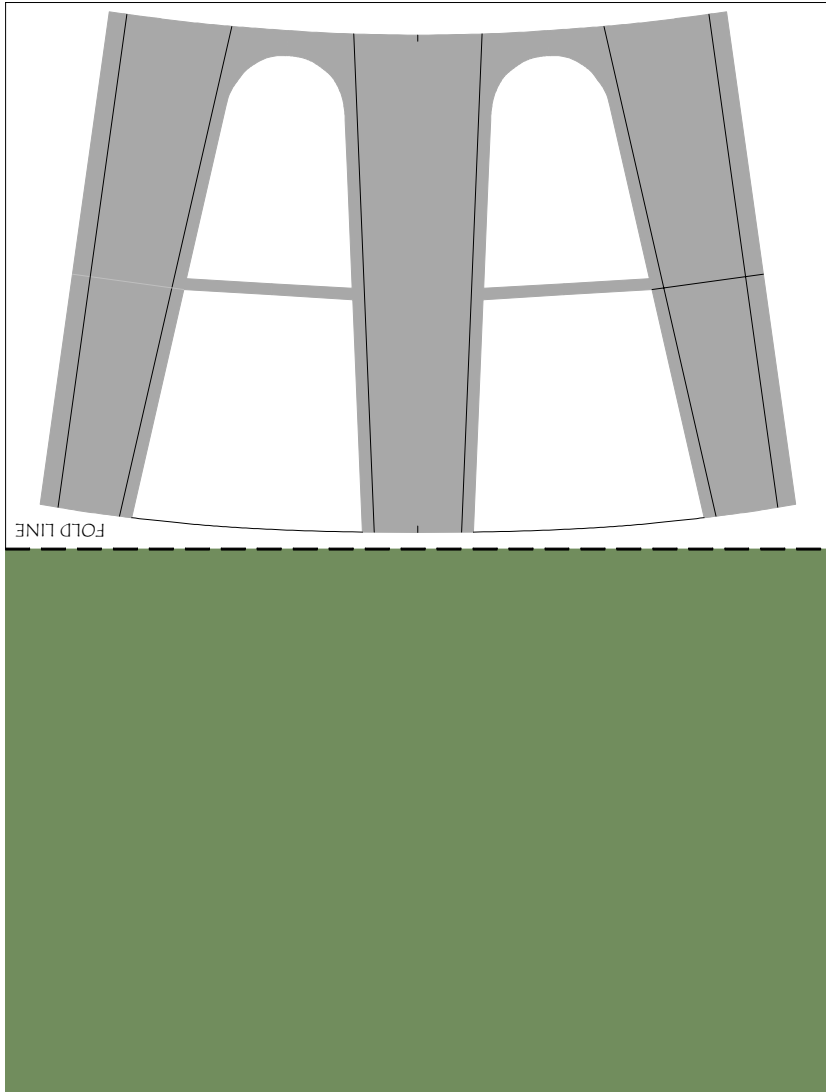
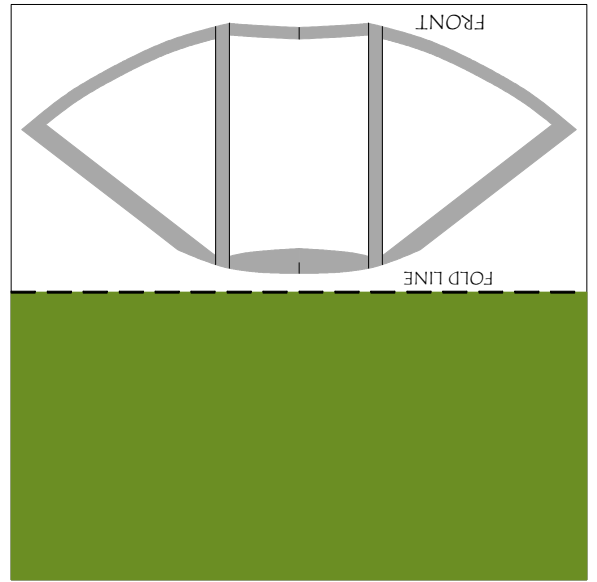
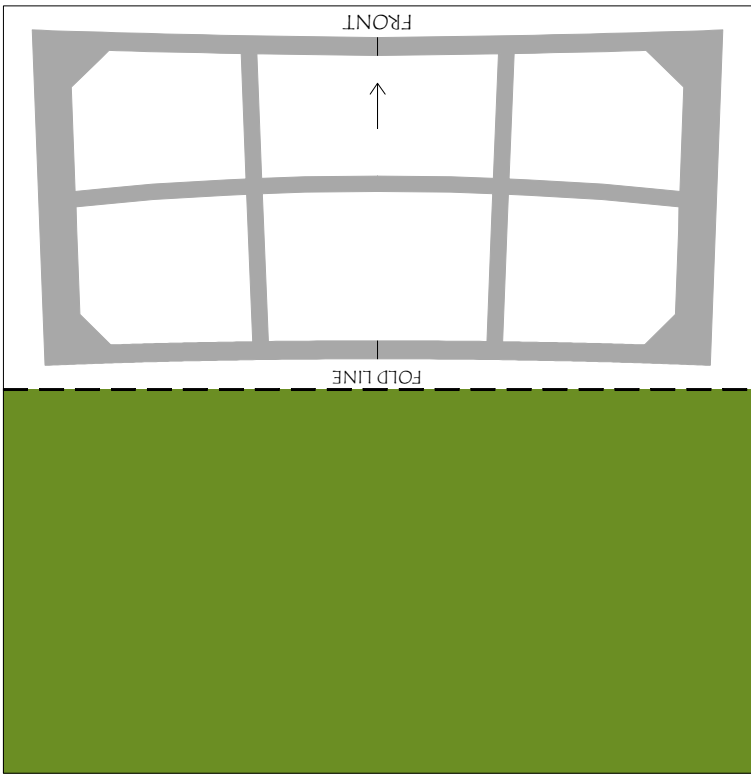
NOSE GUN MOUNTS



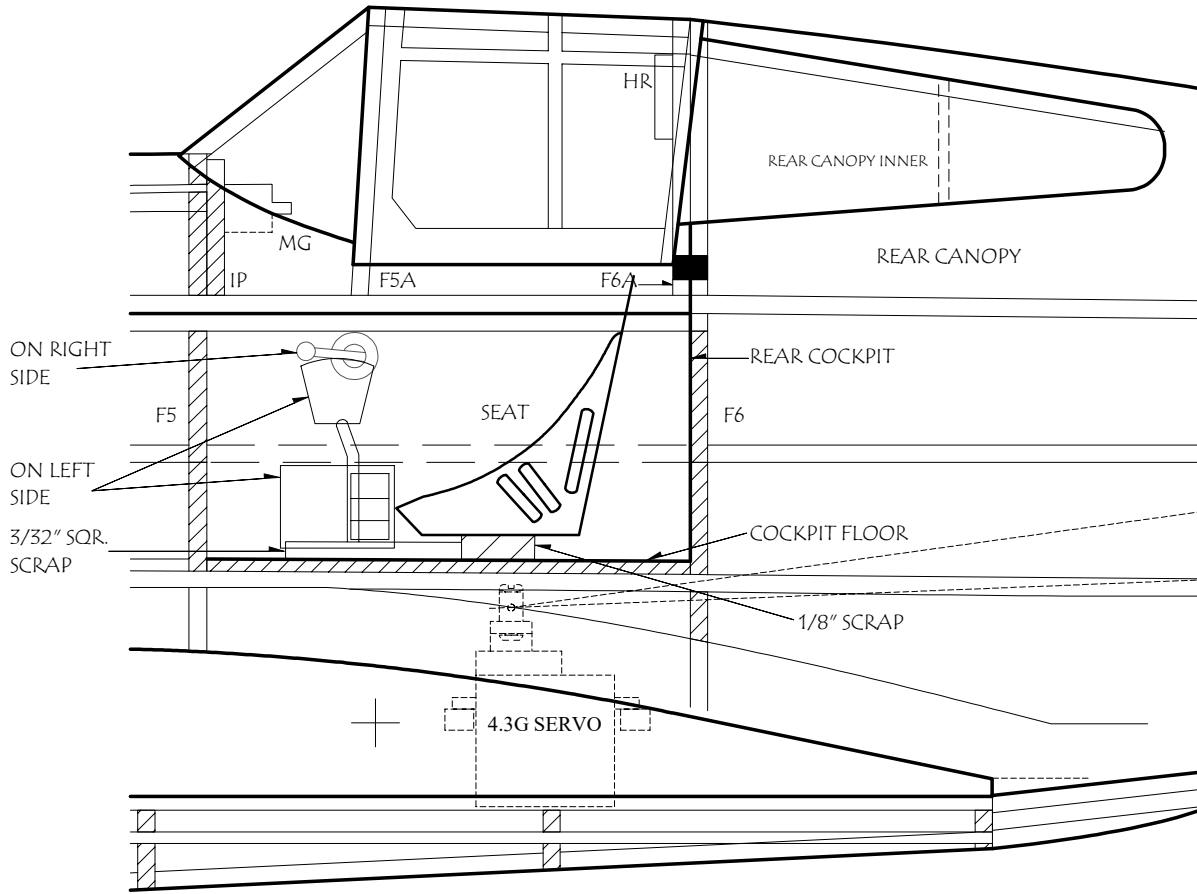
UPPER INTAKE

SHEET SIZE IS 8.5"x14"
PRINT ONTO SILVER "LIGHT"
SILKSPAN 1 NEEDED





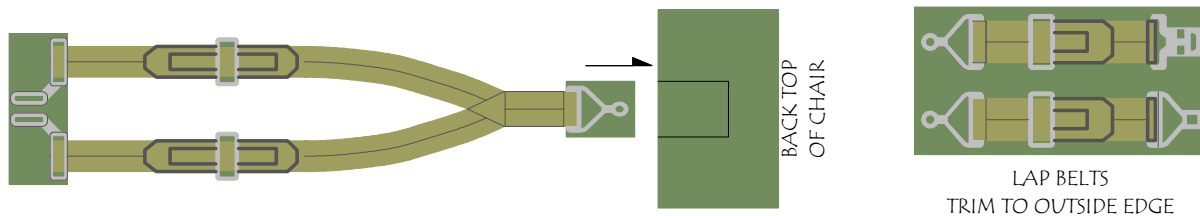
CANOPY- SEE TEMPLATES



P-40C COCKPIT DETAILS

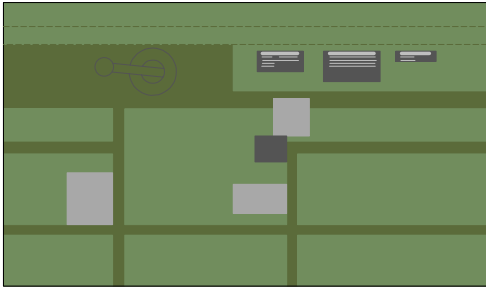
1. PRINT MAIN SHEET ON HEAVY PAPER/CARDSTOCK. ALTERNATE OPTION IS TO PRINT ON STANDARD PAPER AND GLUE ENTIRE SHEET TO A SECOND SHEET OF PAPER (DOUBLE)
2. WITH SHARP KNIFE, CUT OUT THE PARTS STARTING WITH MAIN COCKPIT SECTIONS
3. GLUE THE LEFT, BOTTOM, AND RIGHT PANELS IN PLACE
4. GLUE REAR CANOPY INNERS TO K2 AND THE STRINGERS
5. GLUE THE THROTTLE COLUMN TO SCRAP, FOLD TOP/SIDES AND GLUE TO MAIN LEFT PANEL
6. ADD REAR COCKPIT TO F6 AND HATCH REAR TO FACE OF F6A5.
6. GLUE SWITCH BOX TO SCRAP 1/8" Balsa, FOLD TOP/SIDES AND GLUE TO MAIN LEFT PANEL
7. FOLD CHAIR AND ADD SIDES. GLUE CHAIR BACK IN PLACE AND TRIM. SEAT BELT IS ATTACHED TO BACK OF SET AND CURVES OVER THE TOP OF THE SEAT BACK AND RESTS IN MAIN SEAT. ADD LAP BELTS
8. ROLL UP CONTROL STICK- GLUE TO SCRAP 3/32" SQR. PER THE PLANS
9. GLUE THE INSTRUMENT PANEL TO IP. GLUE TO REAR OF F5

NOTE- IF PRINTING MAIN COCKPIT PARTS ONTO CARDSTOCK, ITS EASIER TO USE THE SEAT BELTS BELOW. THESE ARE BEST PRINTED ON STANDARD STOCK PAPER.

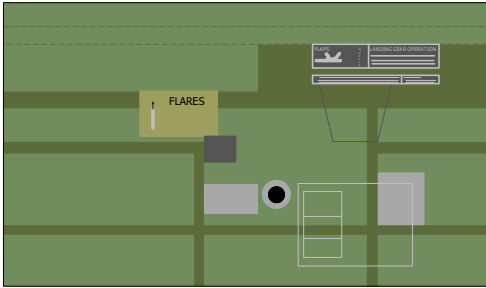


P-40 C TOMAHAWK COCKPIT
 DESIGNED AND DRAWN BY DEREK MICKO
 27.5" WINGSPAN

RIGHT PANEL

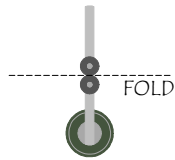
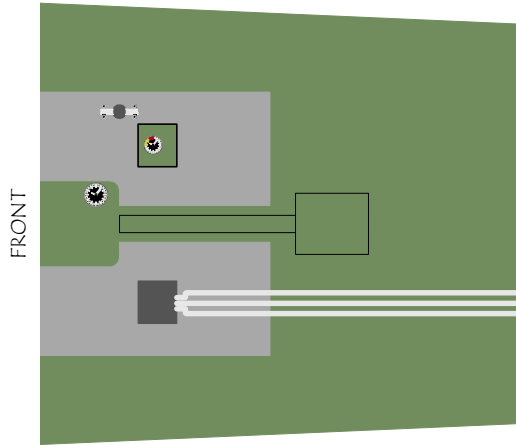


LEFT PANEL

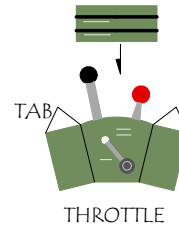


PRINT ON LIGHT CARDSTOCK

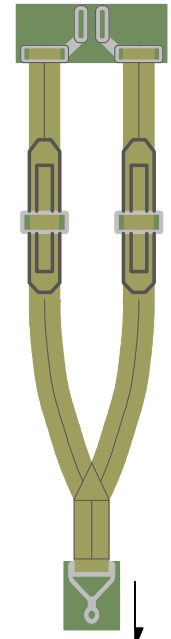
COCKPIT FLOOR



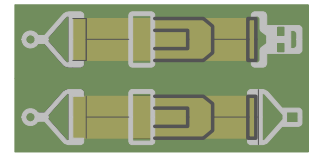
GLUE TO CIRCLE CUT OUT IN W1



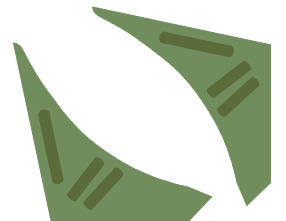
THRITTLE



BACK TOP OF CHAIR



LAP BELTS TRIM TO OUTSIDE EDGE



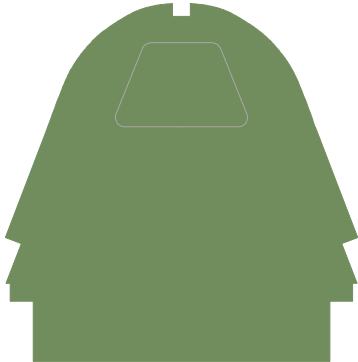
SWITCH BOX
GLUE TO 1/8" SCRAP- ADD TO LEFT PANEL



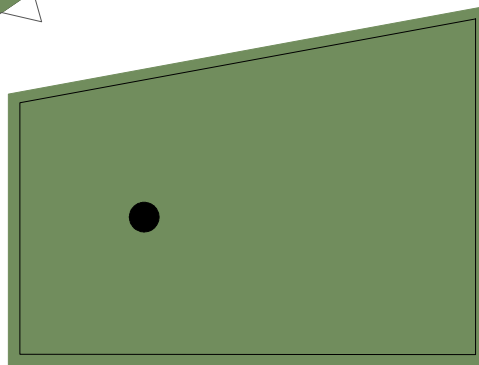
CONTROL STICK
ROLL SO DARK COLOR IS ON THE OUTSIDE



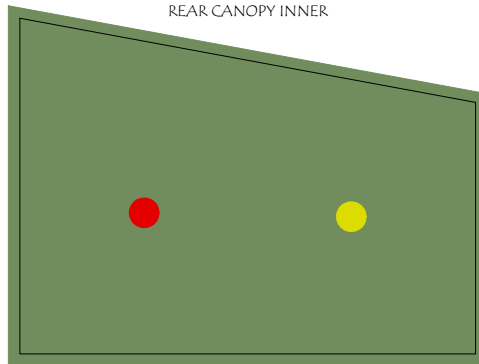
HATCH REAR



REAR COCKPIT



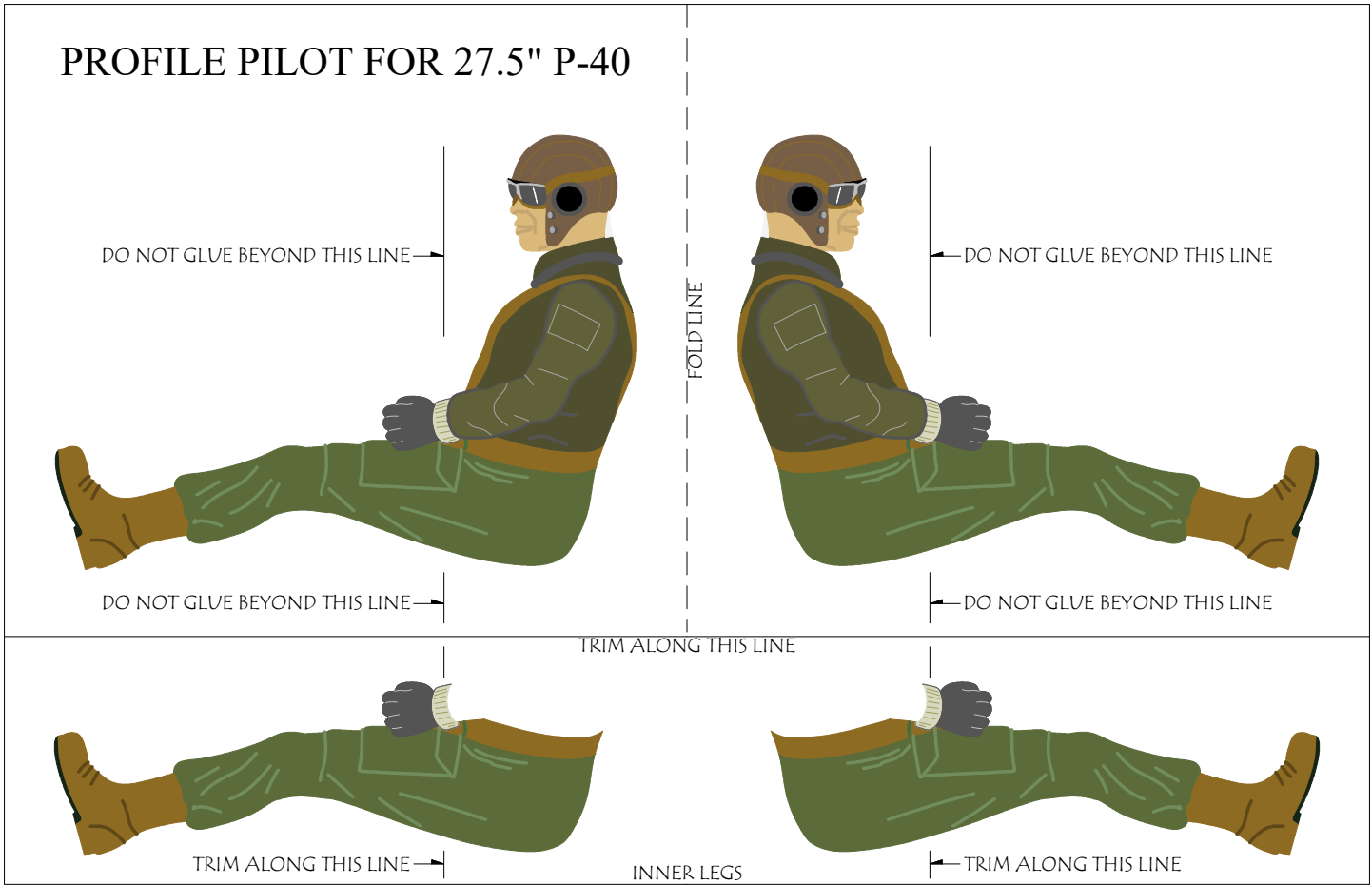
REAR CANOPY INNER



P-40 C TOMAHAWK COCKPIT

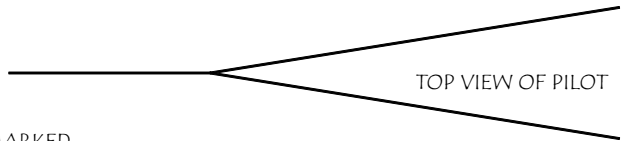
DESIGNED AND DRAWN BY DEREK MICKO
27.5" WINGSPAN

PROFILE PILOT FOR 27.5" P-40



PILOT INSTRUCTIONS

1. PRINT ON STANDARD PAPER
2. CUT ALONG OUTSIDE BOX AND ALONG TRIM LINE
3. FOLD MAIN BODY ALONG DASHED LINE- GLUE TOGETHER ONLY TO LINE MARKED
4. CUT OUT INNER LEGS ALONG TRIM LINE AND GLUE TO INSIDE LEG OF MAIN BODY
5. SEPARATE LEGS PER THE DRAWING



WHEEL HUBS- FOLD AND GLUE, THEN CUT TO SHAPE

