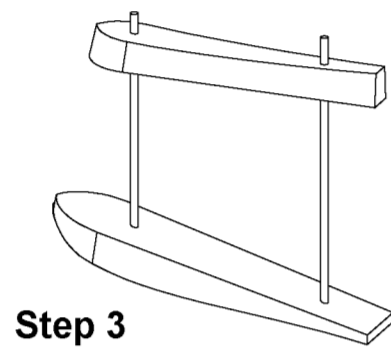
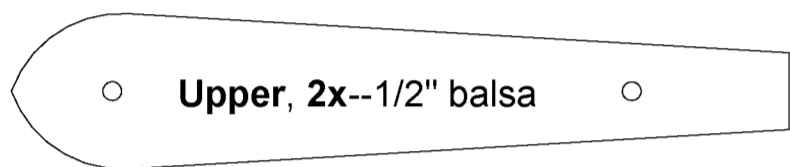


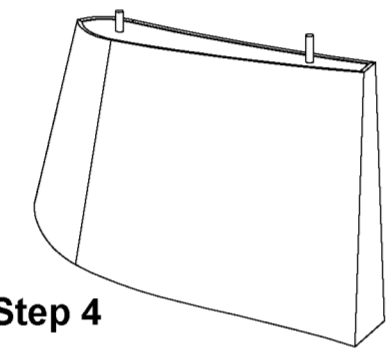
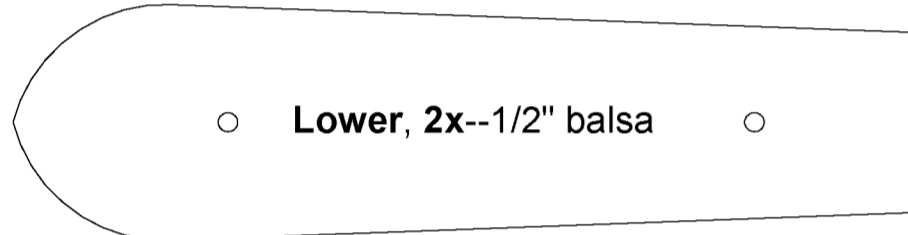
**Wing Instructions**

- Shim the Lower Main Spar with 1/16" scrap and pin in place over the plan
- Shimming will allow the sheeting to cover the Lower Main Spar later
- Shim the Rear Spar and A1 with 3/32" scrap and pin in place over plan
- Do not glue A1 to the Rear Spar!
- Glue all Ribs in place
- Add the Upper Main Spar, and Shear Webs
- Mark the notch positions on the 5/8" Leading Edge stock and cut in the notches
- Notch the 3/4" wide Trailing Edge stock
- Glue the Leading and Trailing edge parts into place
- Add the aileron riblets A2
- Epoxy the Top Motor Pad parts into place
- NOTE: Make sure each Pad is in the right position--if positioned properly, the motor struts will be angled correctly
- Glue the Wing Tip panel to the underside of the wing assembly
- Sheet the upper surfaces where shown with 1/16" balsa
- Unpin the assembly and epoxy the Bottom Motor Pads and Float Pads into place
- Sheet the lower surfaces where shown with 1/16" balsa
- Join the wing halves and fiberglass the joint
- Add a 1/8" Wing Pin

**Float Templates**



Step 3



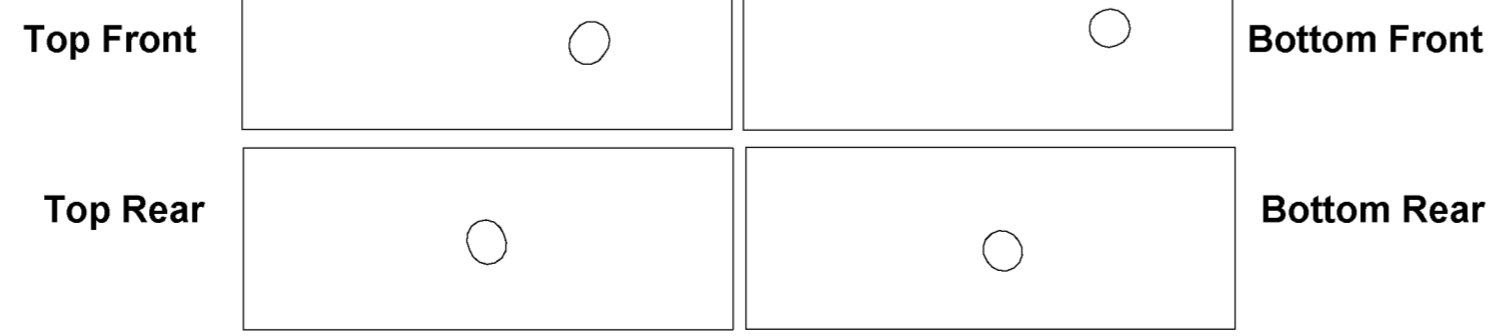
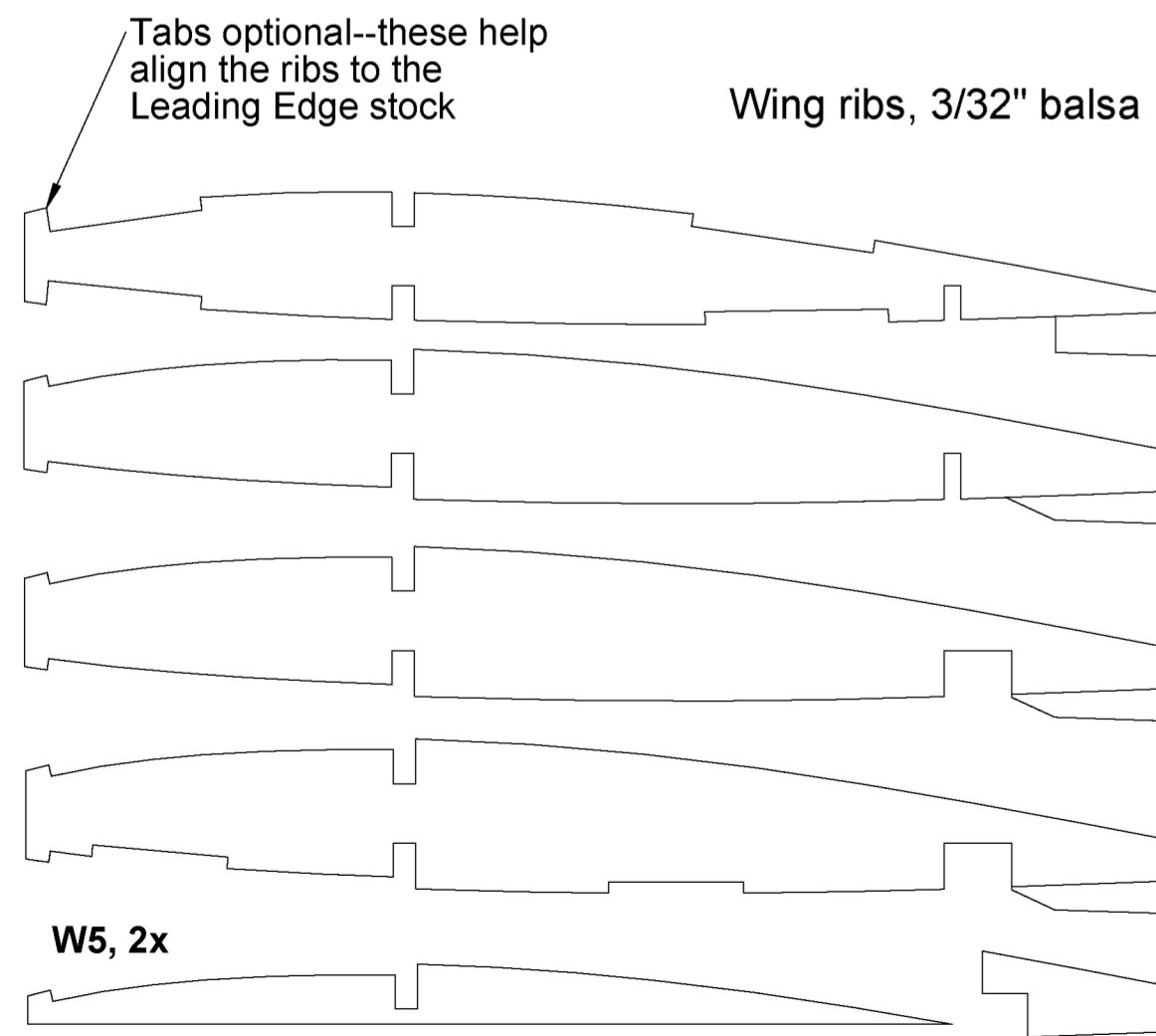
Step 4

Float pads, 4x--1/16" ply

**Float Instructions**

- Cut Upper and Lower formers from templates above
- Shape the top of the Upper and the bottom of the Lower formers as shown on the side view of the fuselage
- Join the Upper and Lower formers with two 1/8" dowels or carbon fiber rods
- Note: the holes in the Lower formers will need to be angled
- Sheet the floats with 1/16" balsa and seal to make water tight

**Wing Templates**



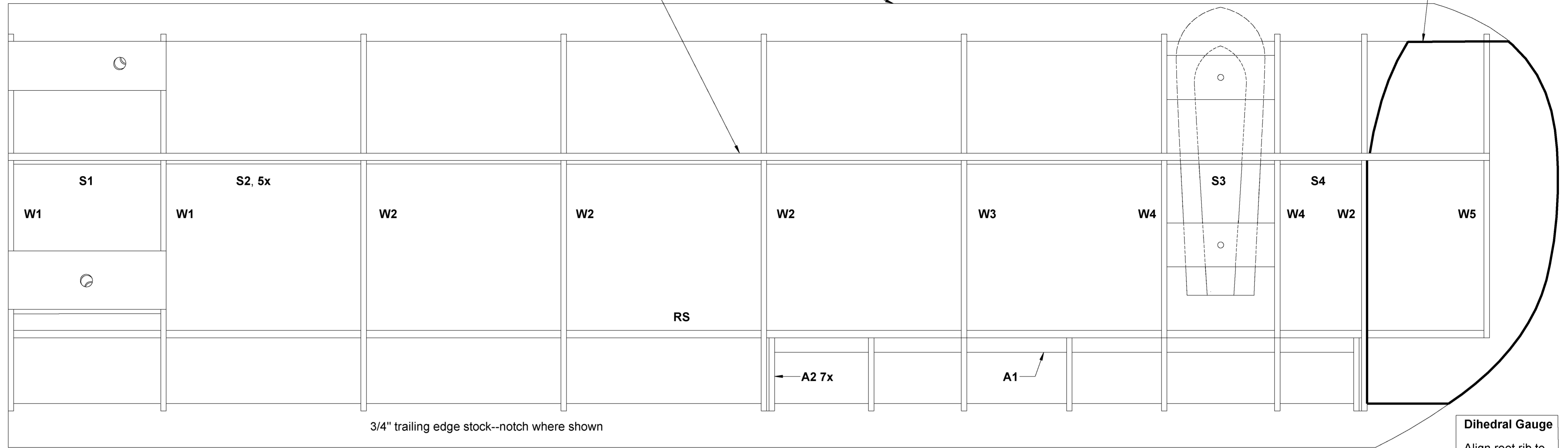
**Note: the holes in the Motor Pod Pads are oblong to help position the struts at the correct angles. They are shown here in position for the Right Wing**

1/8" x 3/16" upper and lower main spars backed with vertical grain shear webs

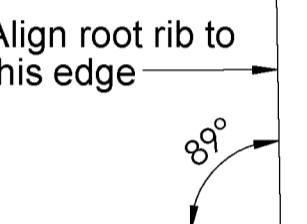
5/8" leading edge stock--notch were shown

The fullscale Volmer had ~1deg dihedral. Add dihedral by tilting the root wing ribs with gauge below. Finished wing tip at bottom of W5 will be 0.45"/11mm above board with wing root flat against board.

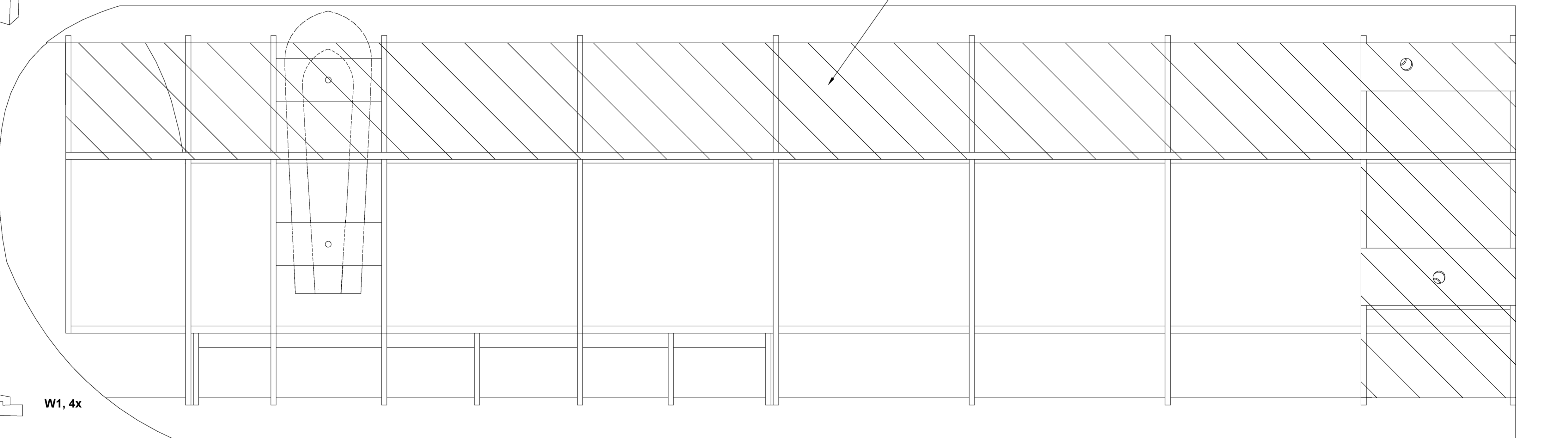
Wing Tip panel outline--cut from 3/32" balsa, attach below RS and W5



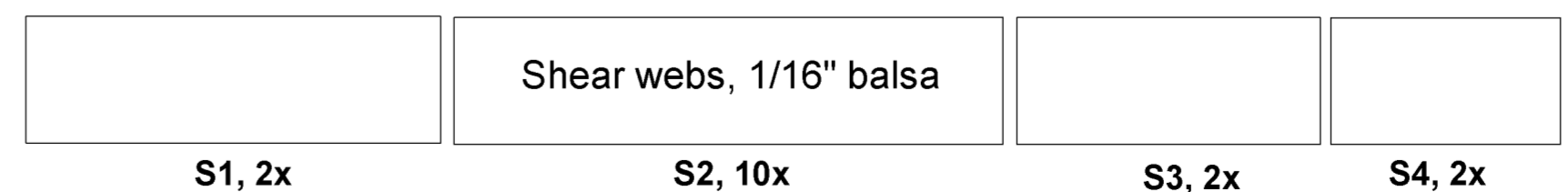
**Dihedral Gauge**



Sheet shaded area of top and bottom of wing with 1/16" balsa



RS, 2x--3/32" balsa



A1, 2x--1/4" balsa

Copyright 2020 **AMA** and **ModelAviation**  
 Copying for resale of this drawing without the written approval or consent of AMA is expressly prohibited.

**INFIELD ENGINEERING** by Paul Kohlmann

Title: **50" Volmer VJ-22 Sportsman**

Size: D	Dwg. No.: Volmer VJ22	Rev: A
Scale: 1:1		Weight: 28-32oz
Details and laser-cut parts info can be found at: <a href="http://www.infieldengineering.com">www.infieldengineering.com</a>		Sheet 2 of 2 Plan No. 1121