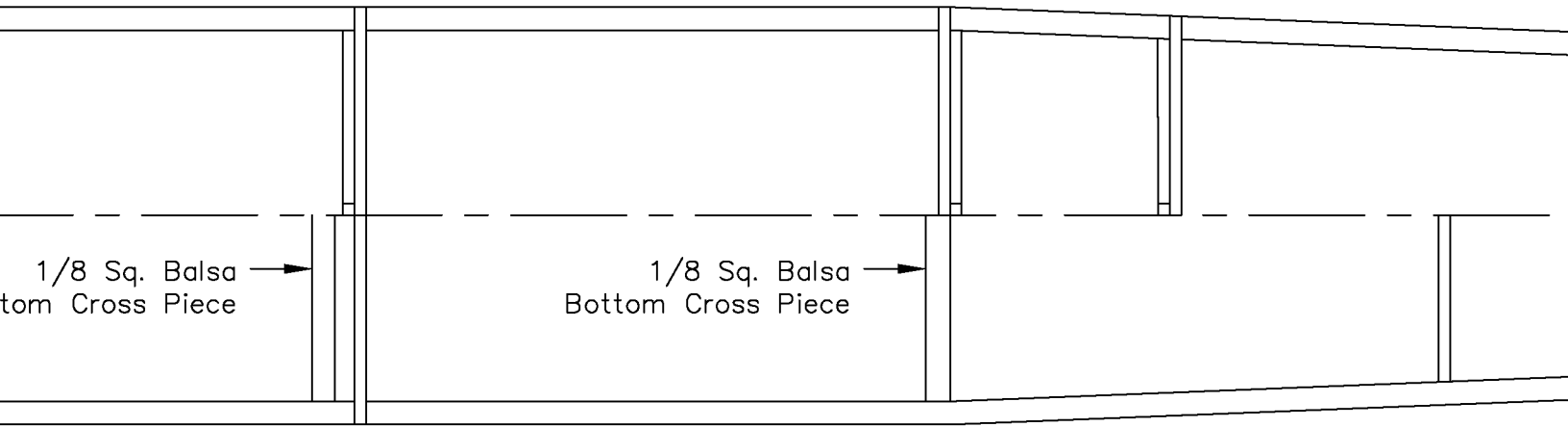
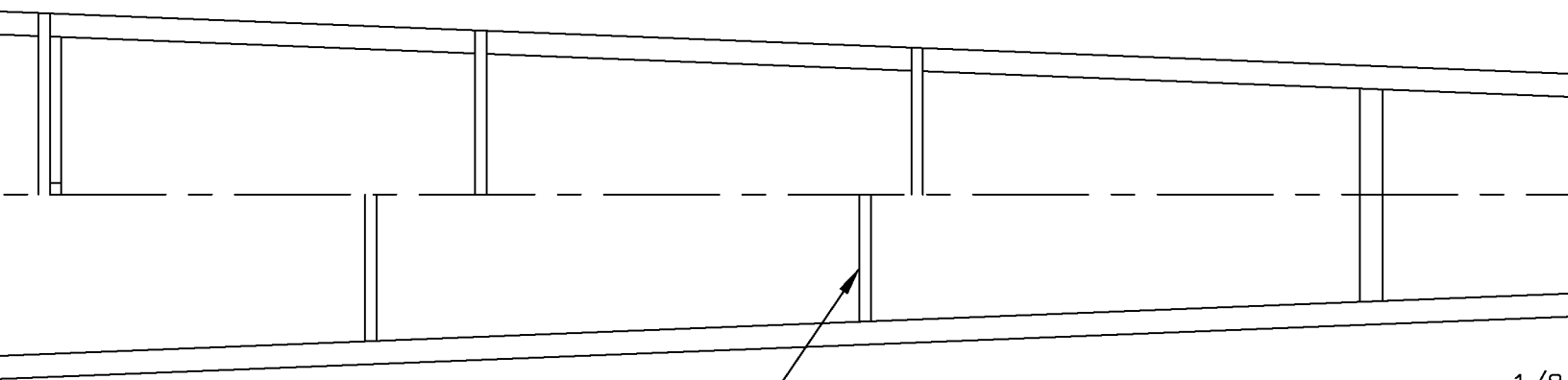


Fuselage Framing Plan Top View



Fuselage Framing Plan Bottom View





1/16 x 1/8 Sq. Balsa
Bottom Cross Pieces

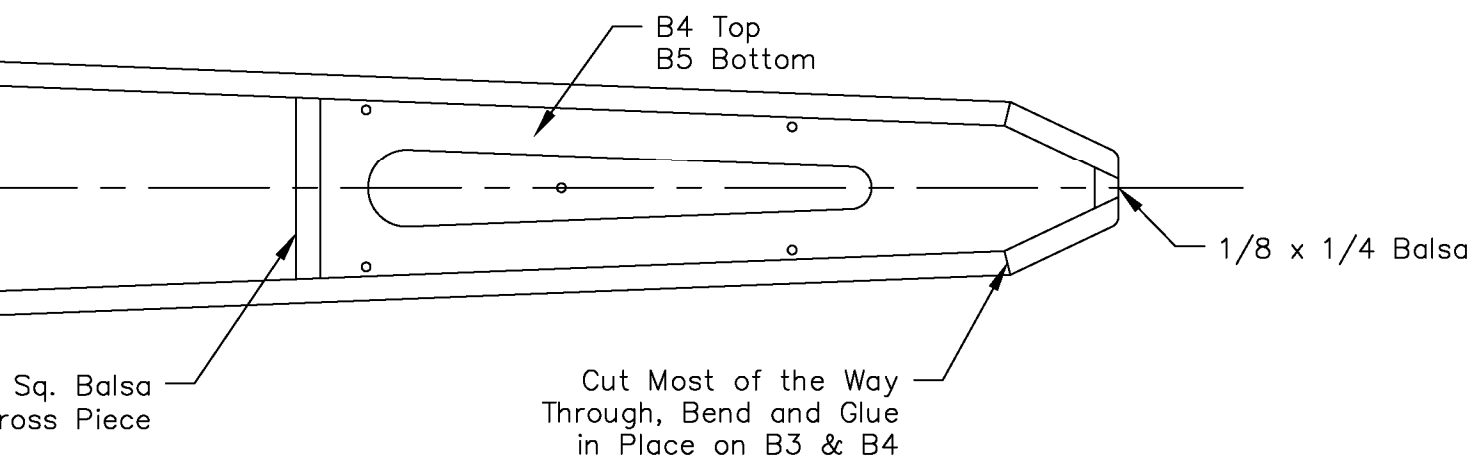
1/8
Bottom C

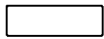
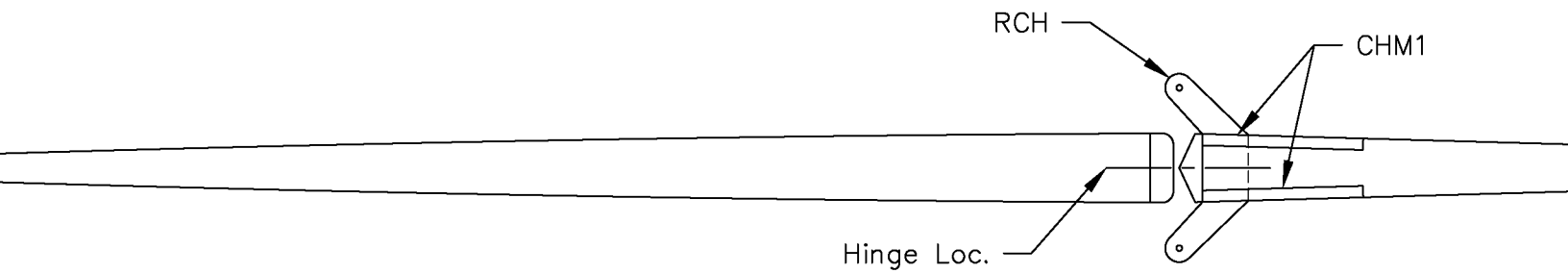
6

7

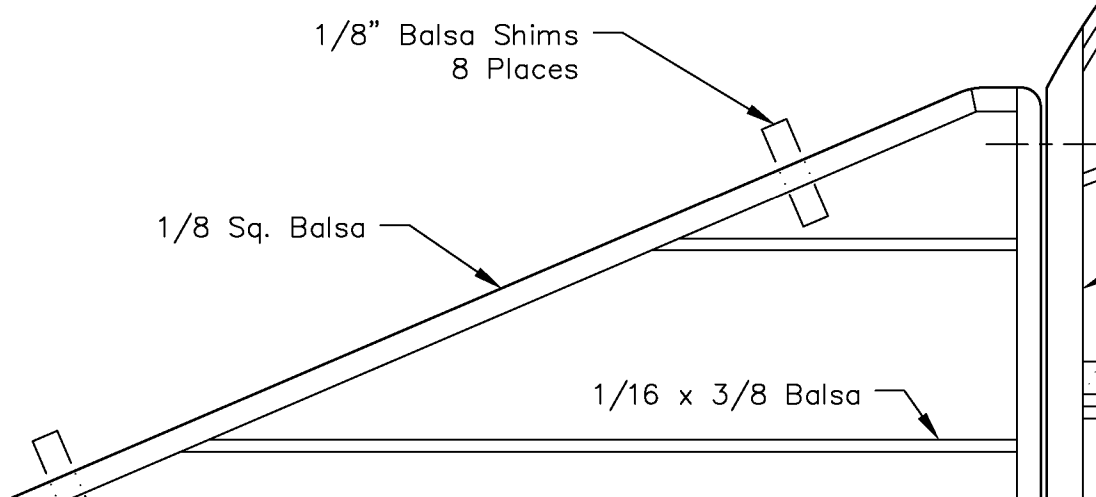
8

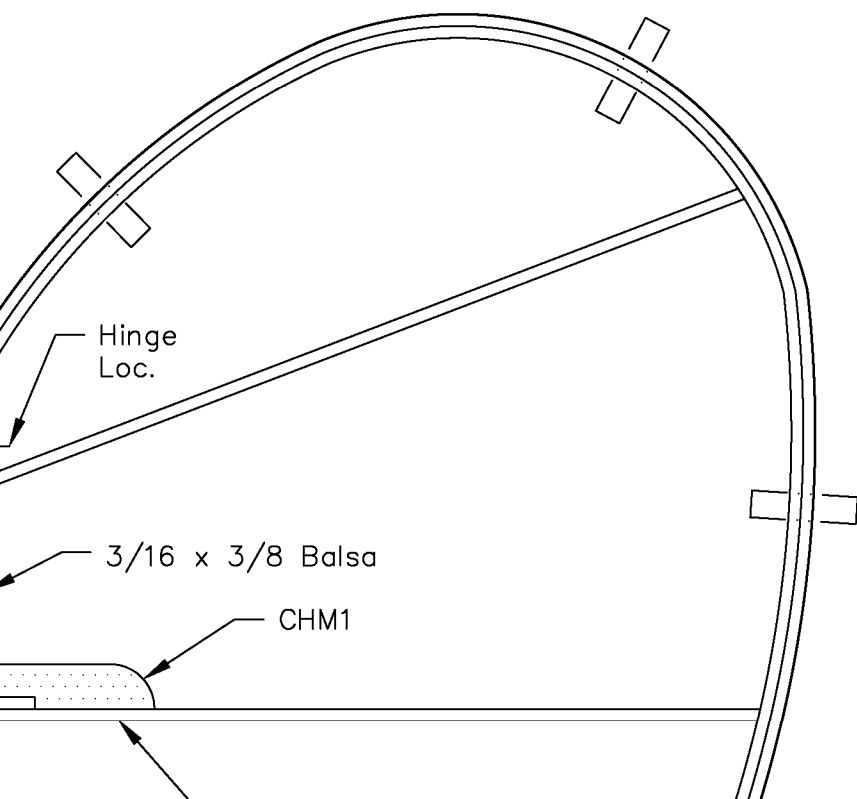
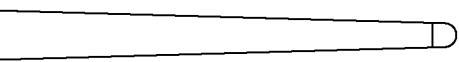
9

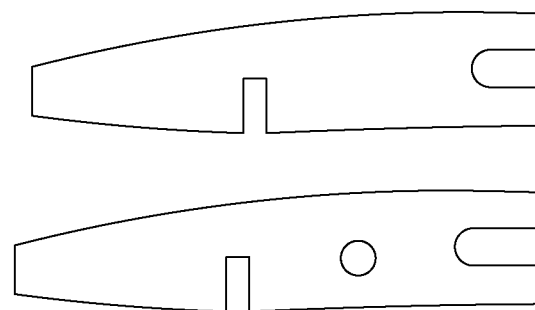
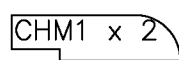
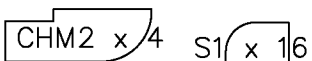
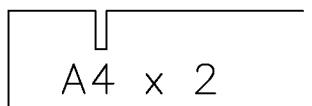
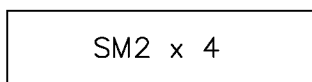
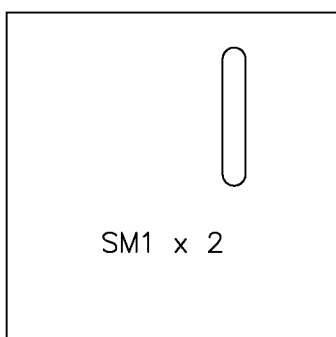
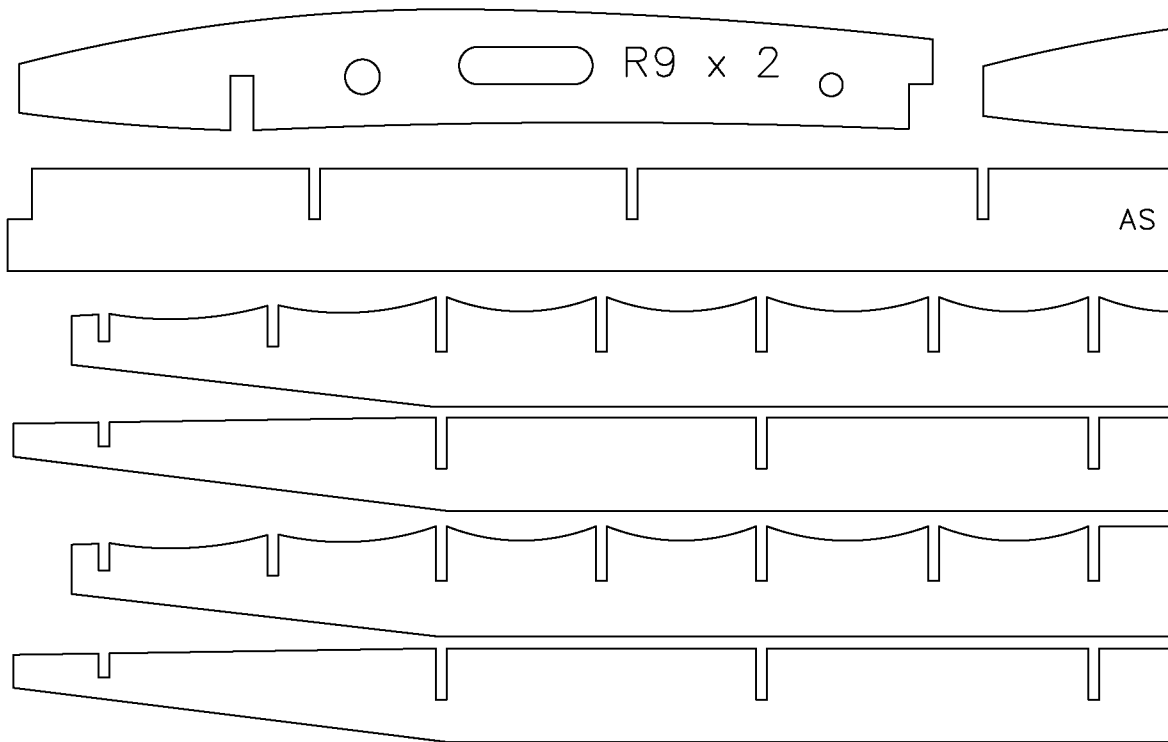
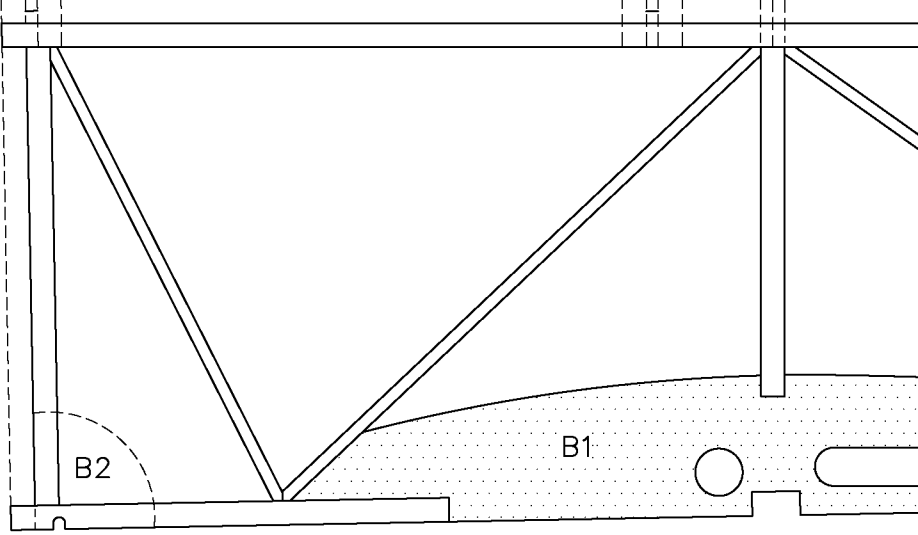


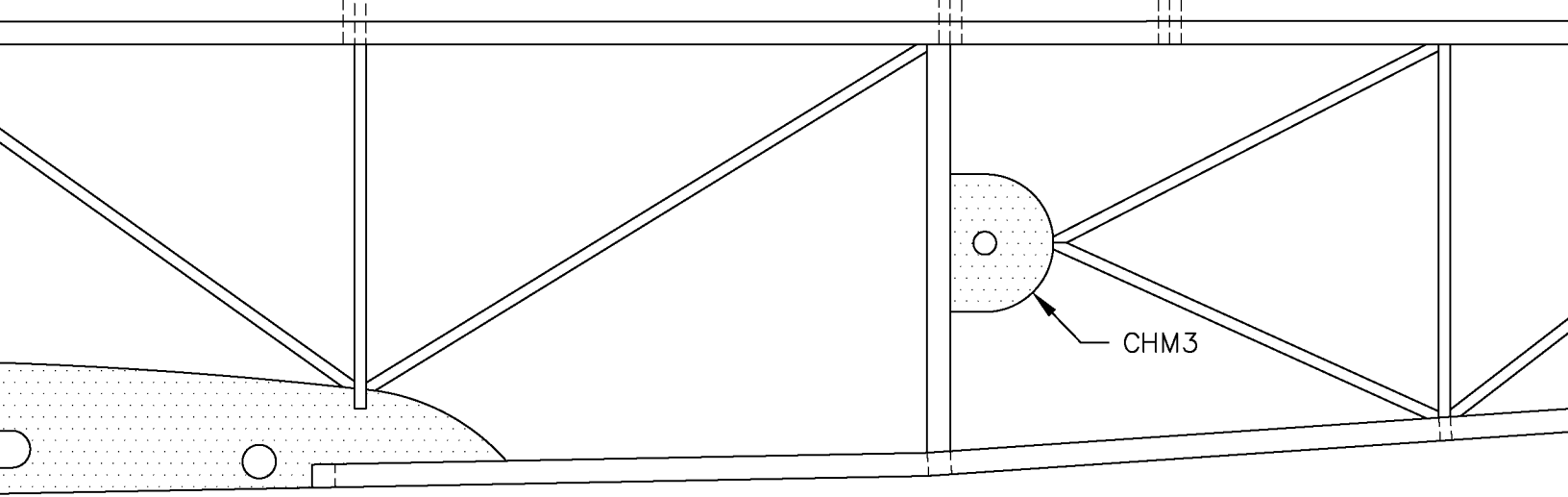


Rudder Hinge Cutting Pattern
 Take from Light Cya Hinge Stock 3 Req.

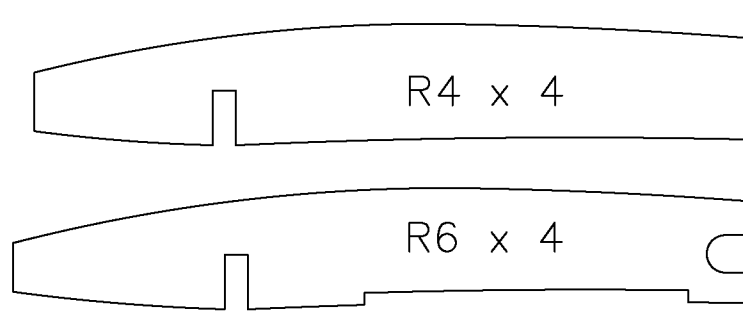
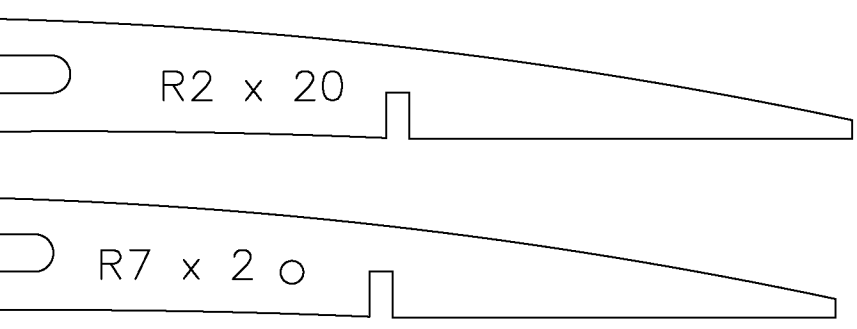
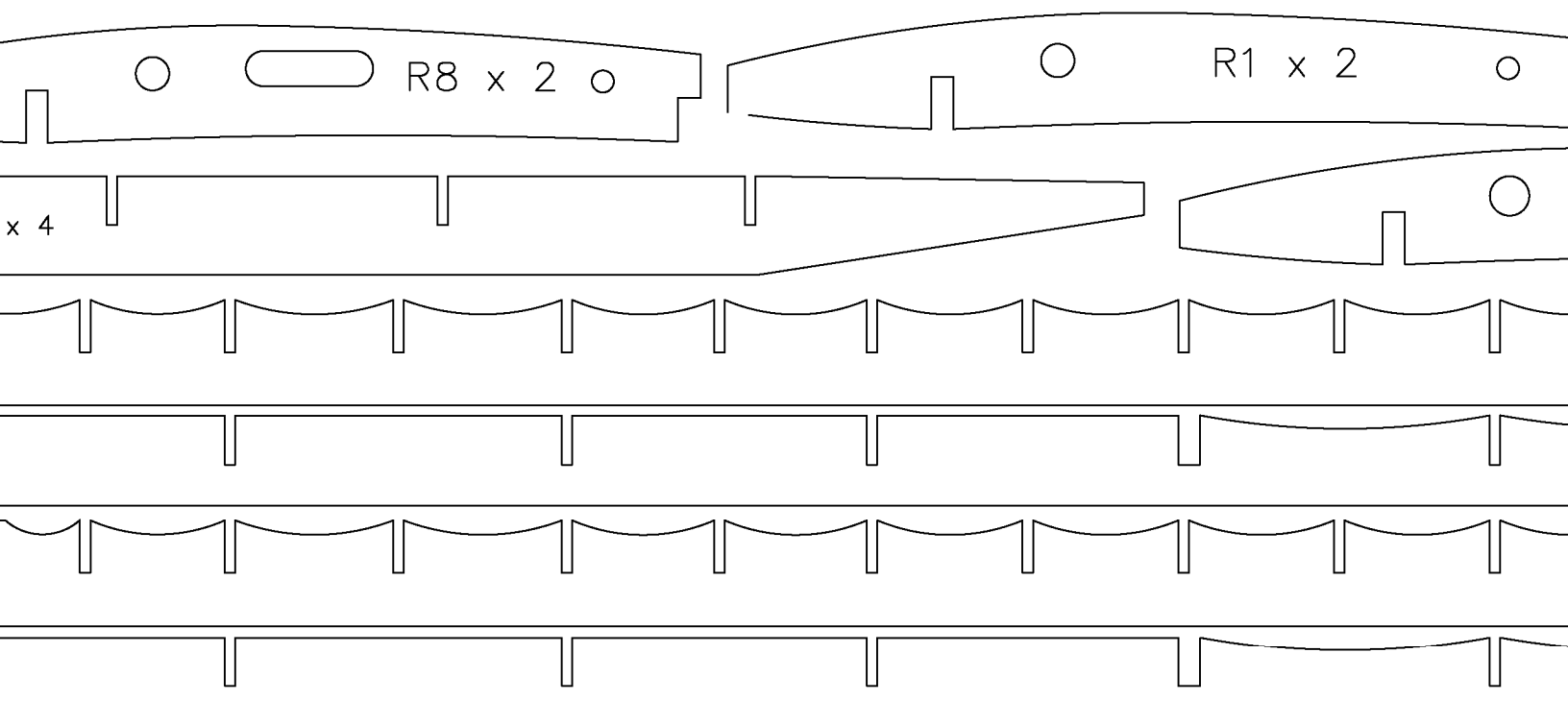


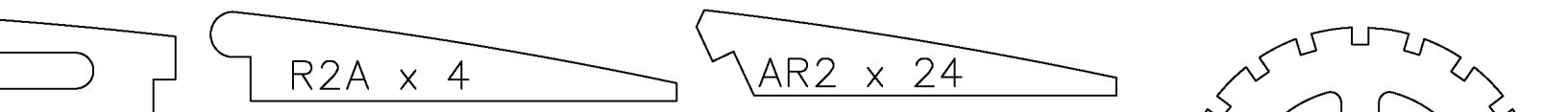
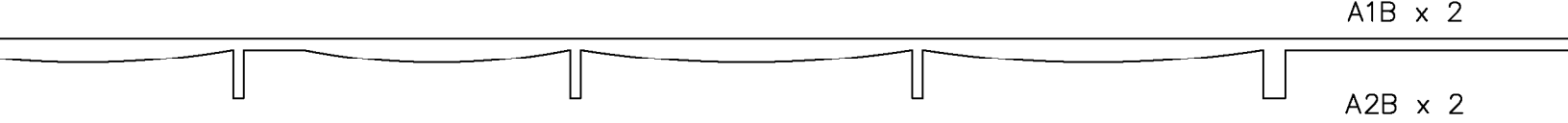
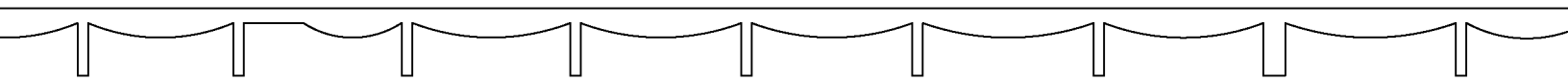
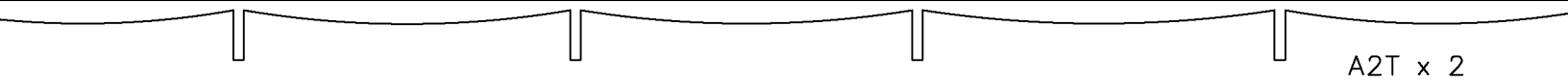
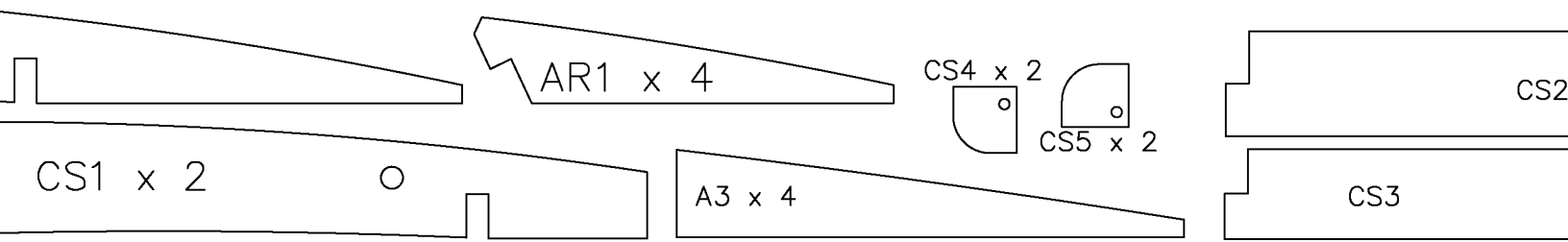
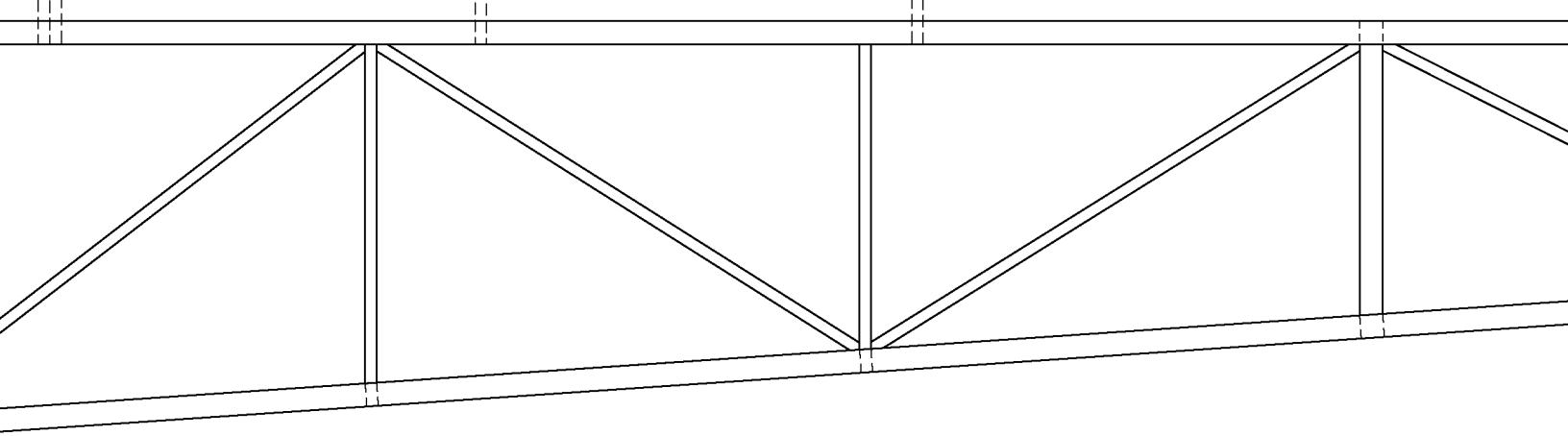


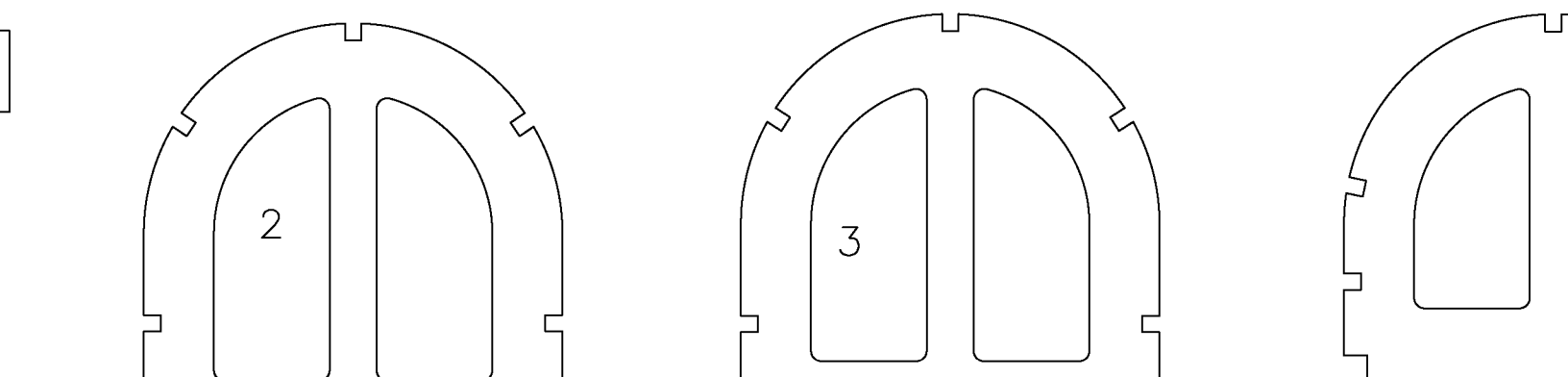
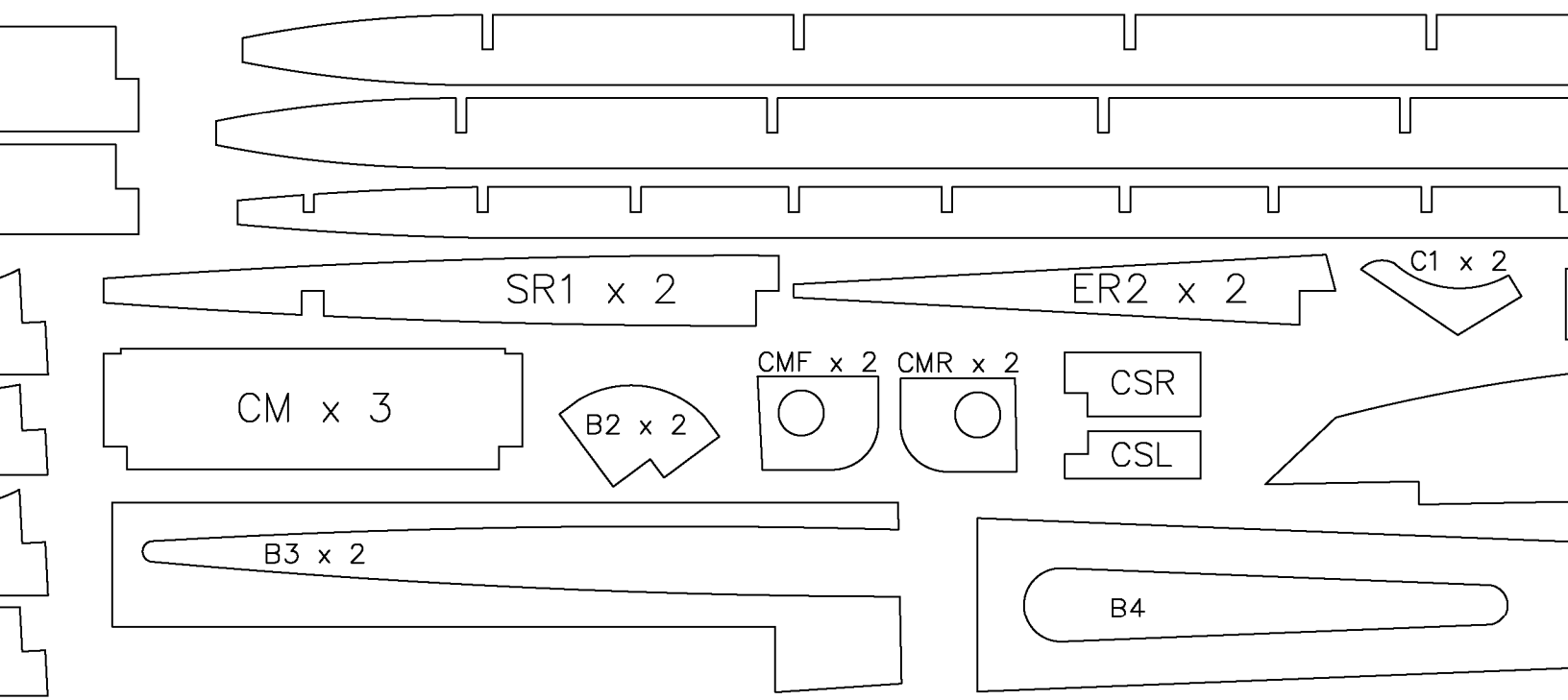
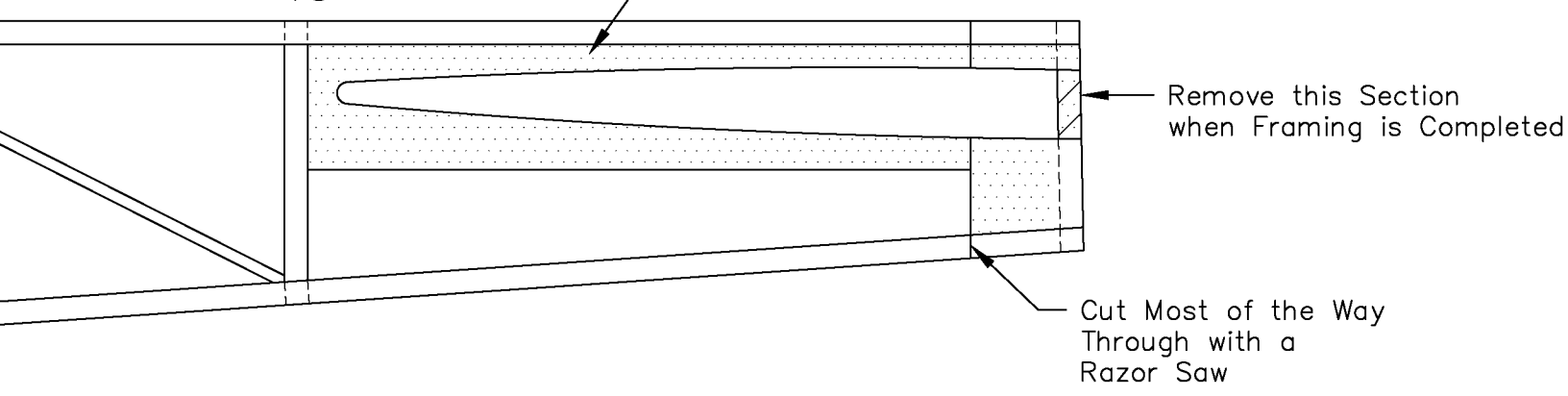


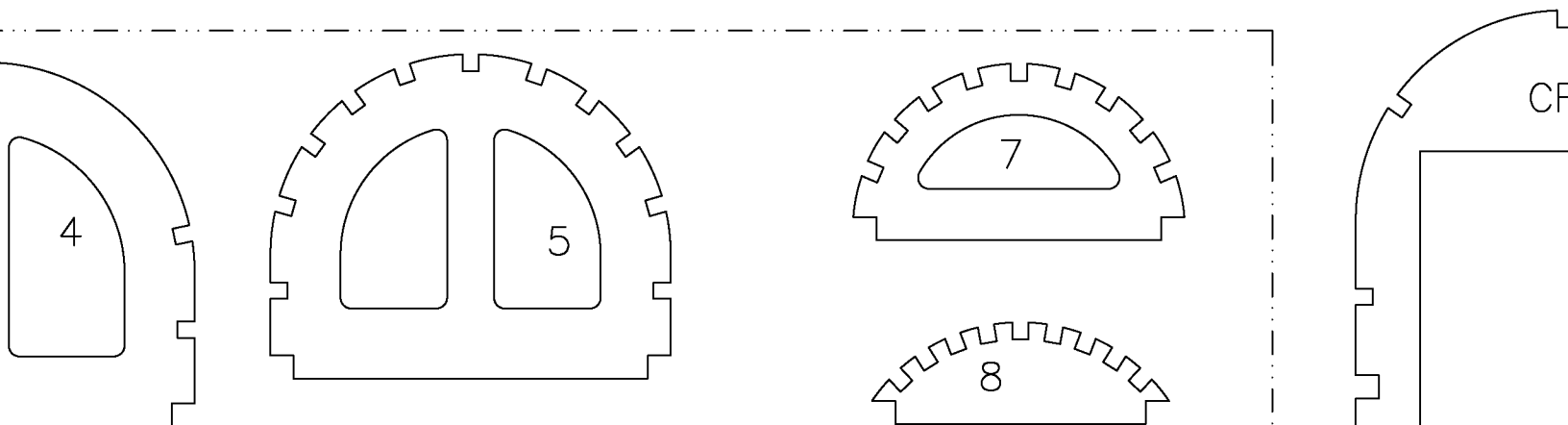
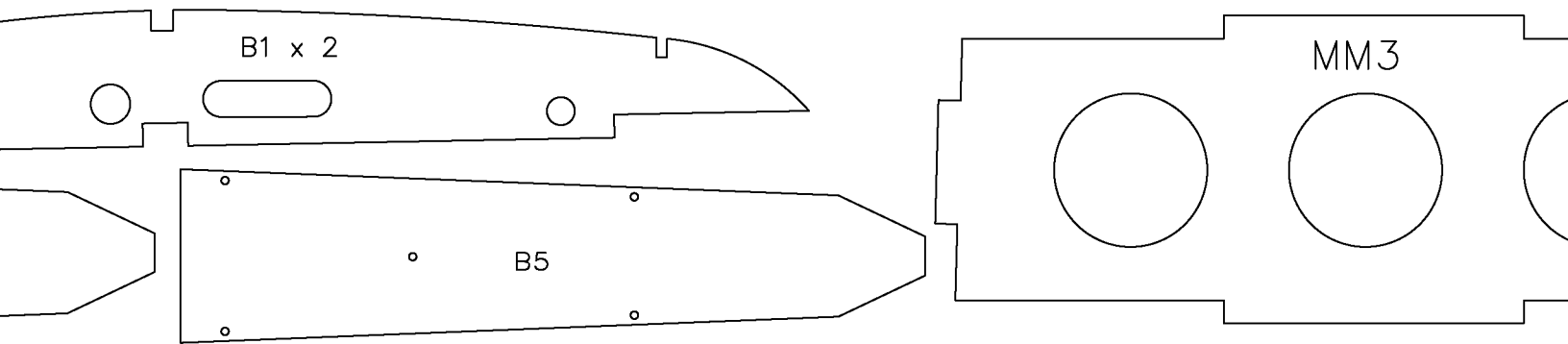
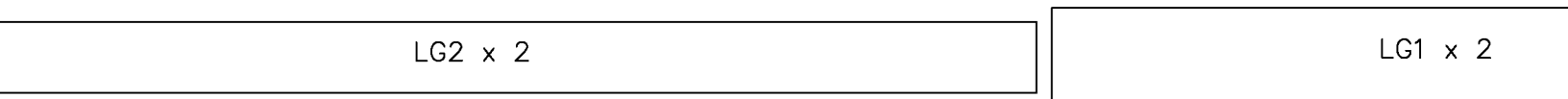
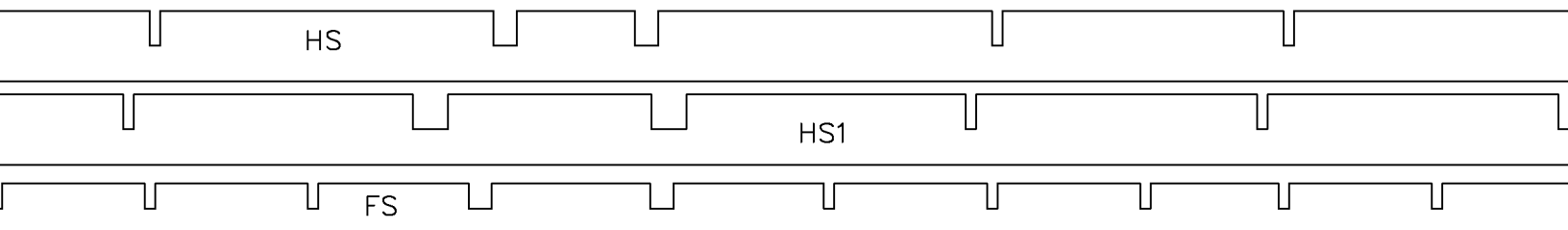
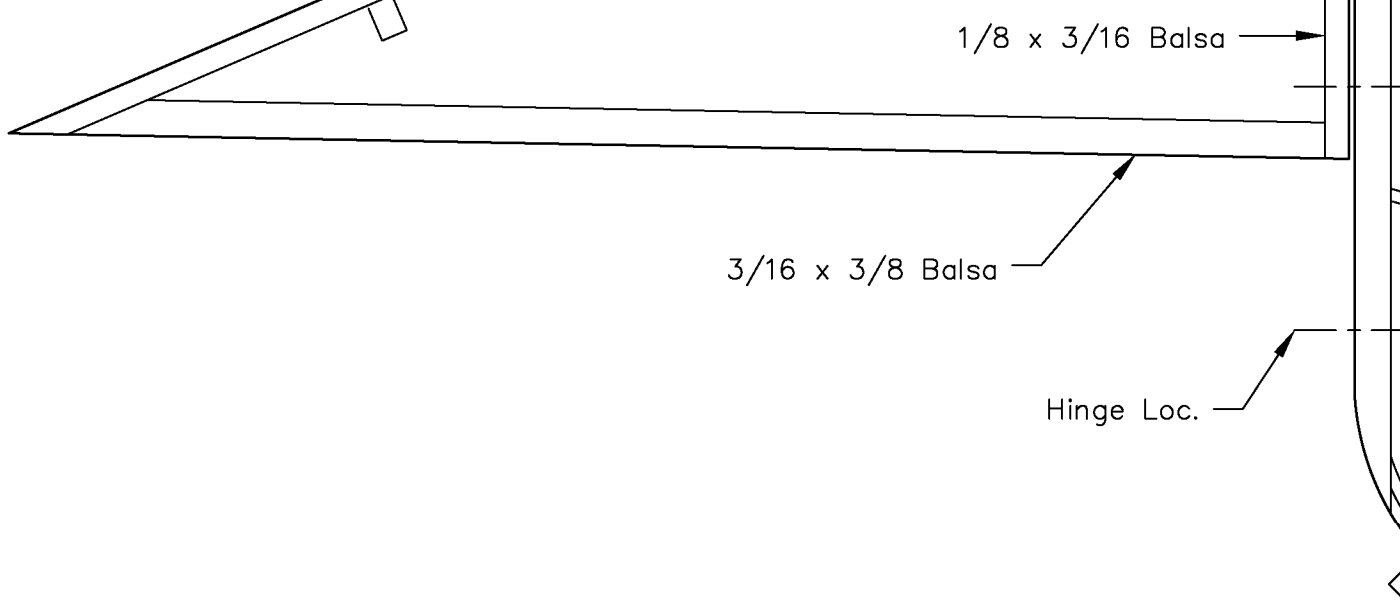


Fuselage Framing Plan



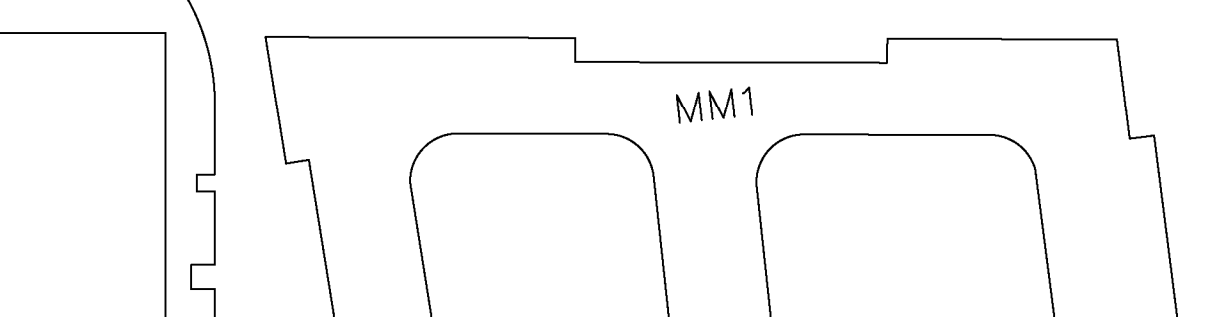
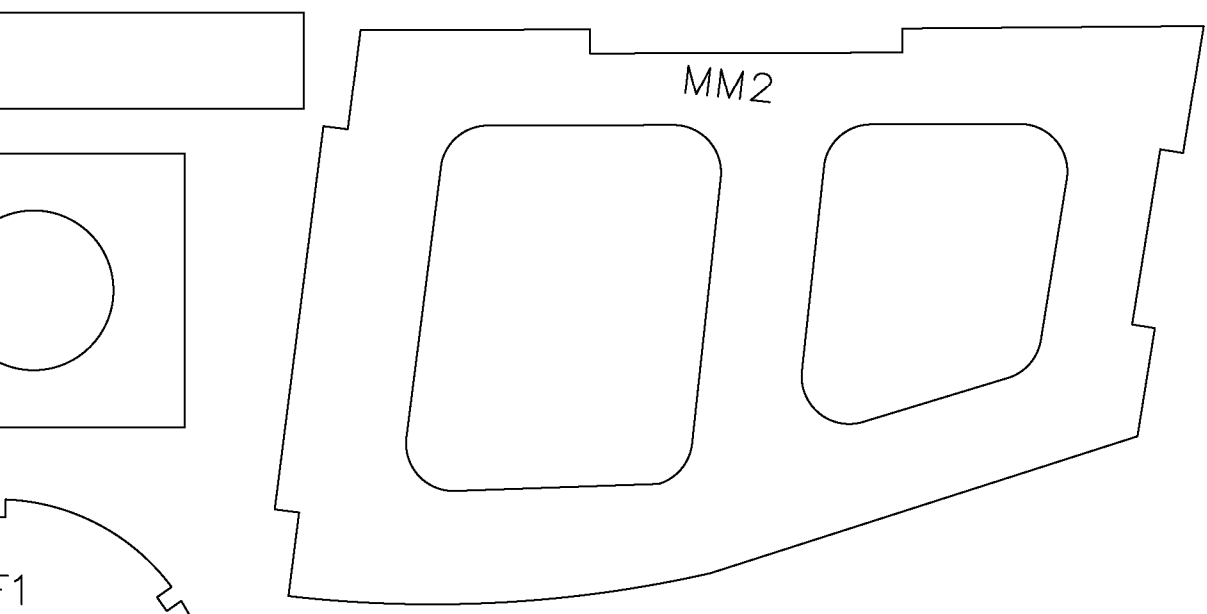
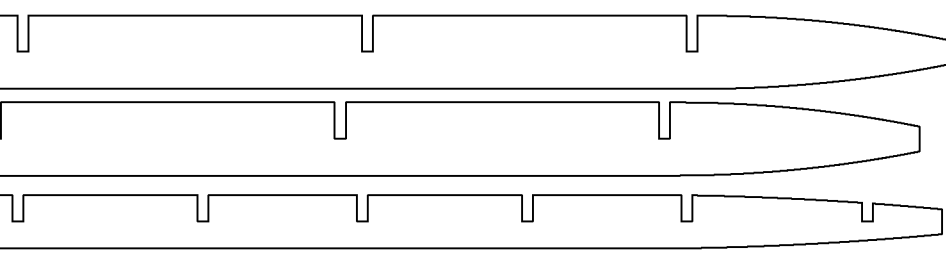
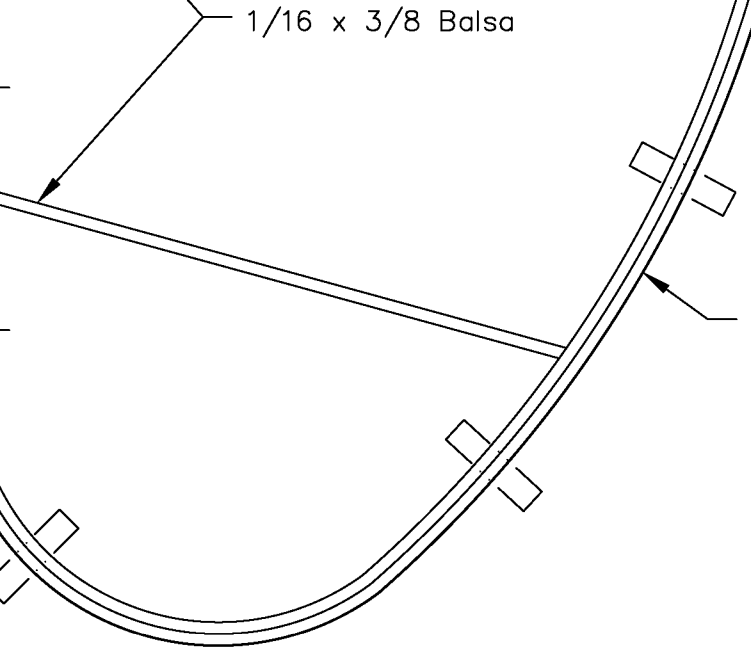




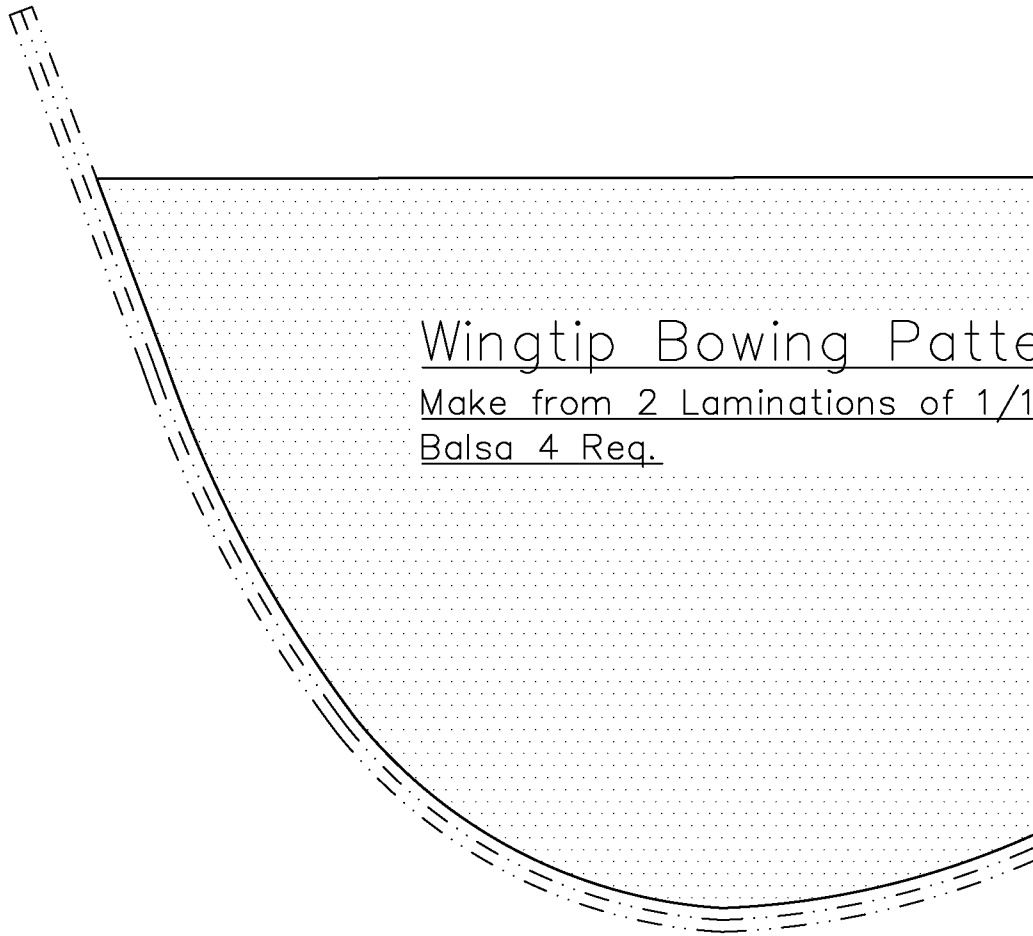


1/16 x 3/8 Balsa

Outline is 2 Laminations
of 1/16 x 1/8 Balsa

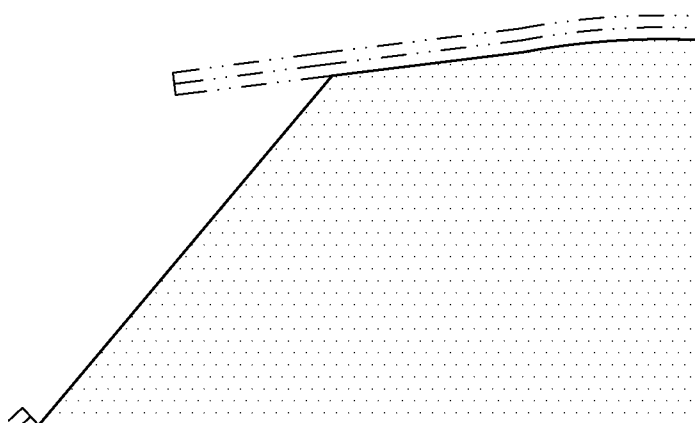


F1



Wingtip Bowing Pattern

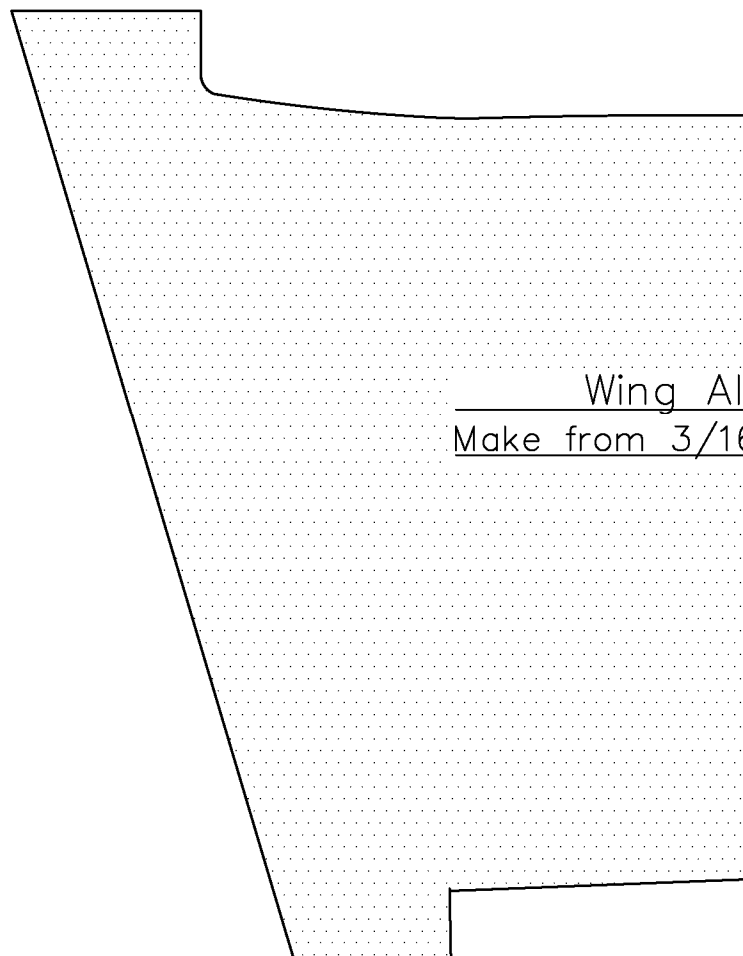
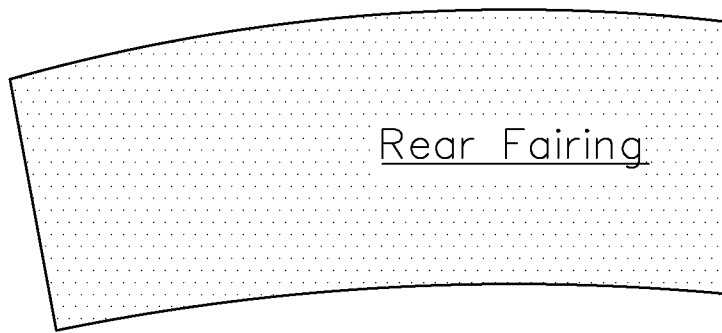
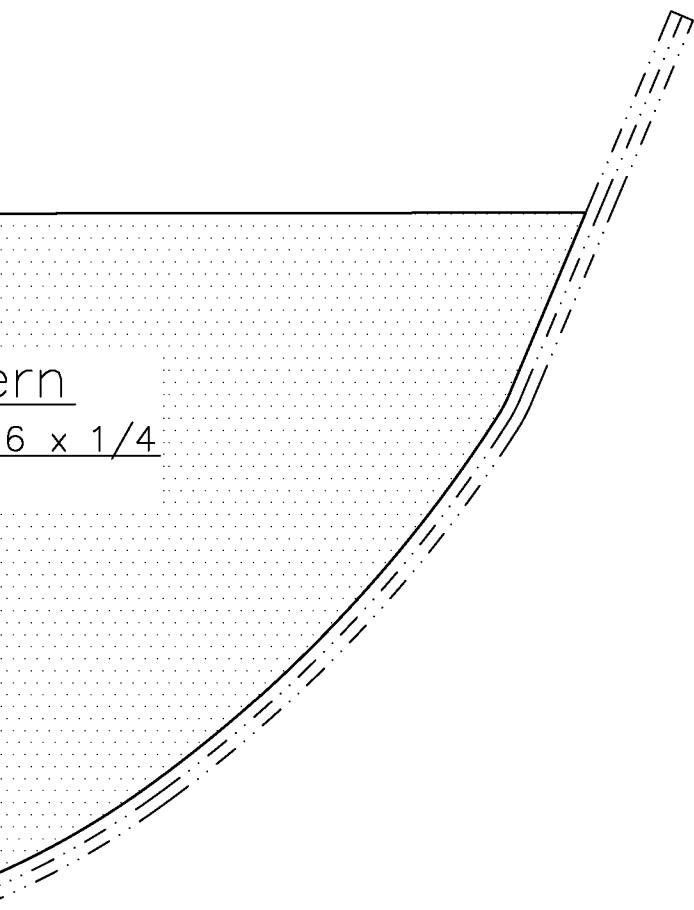
Make from 2 Laminations of 1/16
Balsa 4 Req.



10 ER1 x 10

R5 x 4

FR x



48

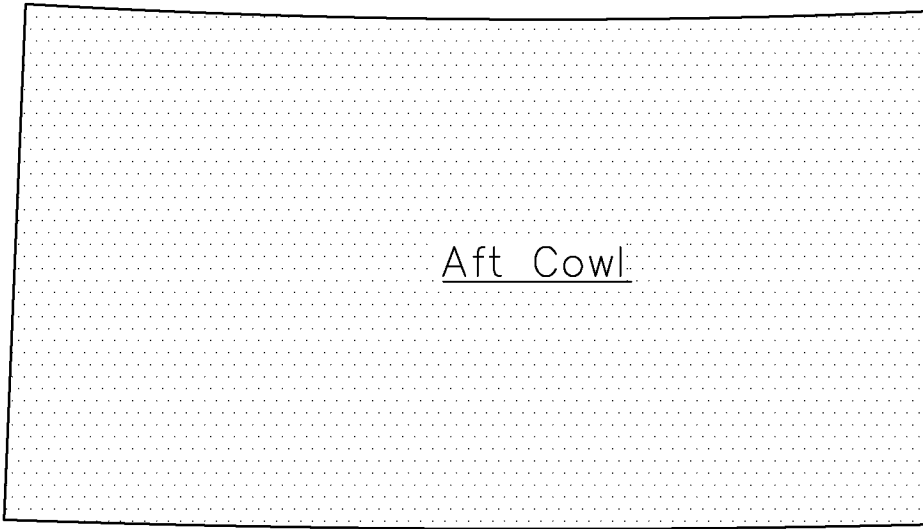
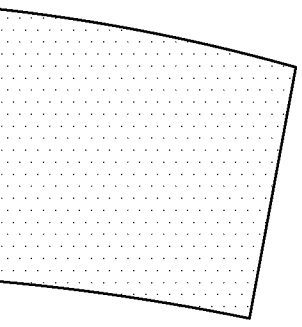
FRa x 4

SR4 x 2

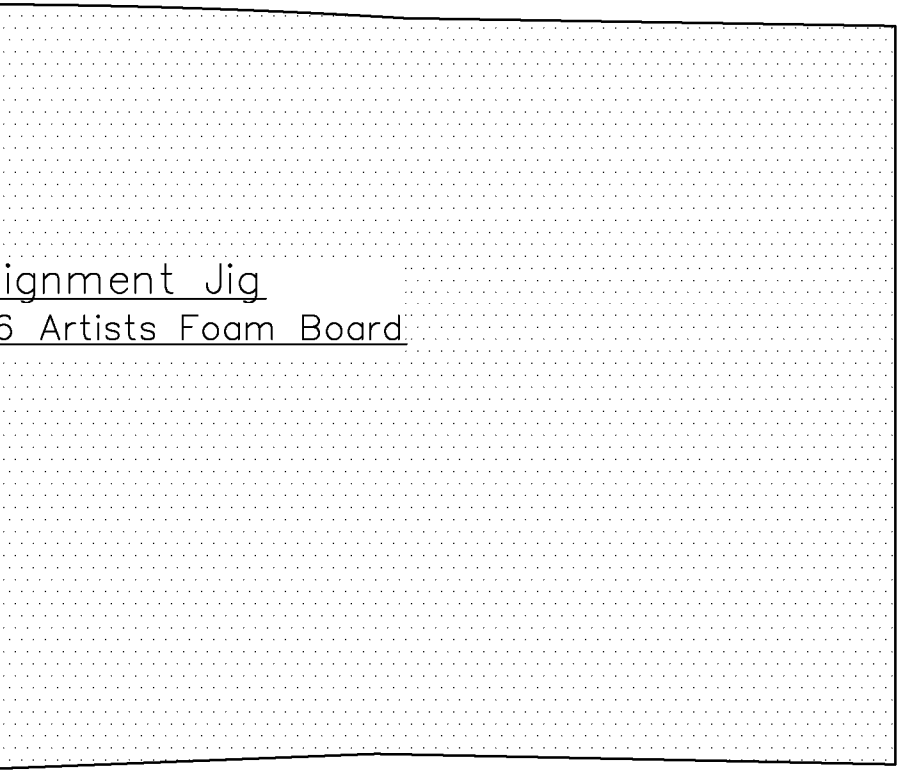
ALB x 2

ALT x 2

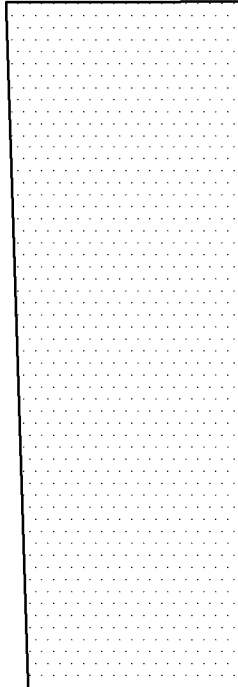
°

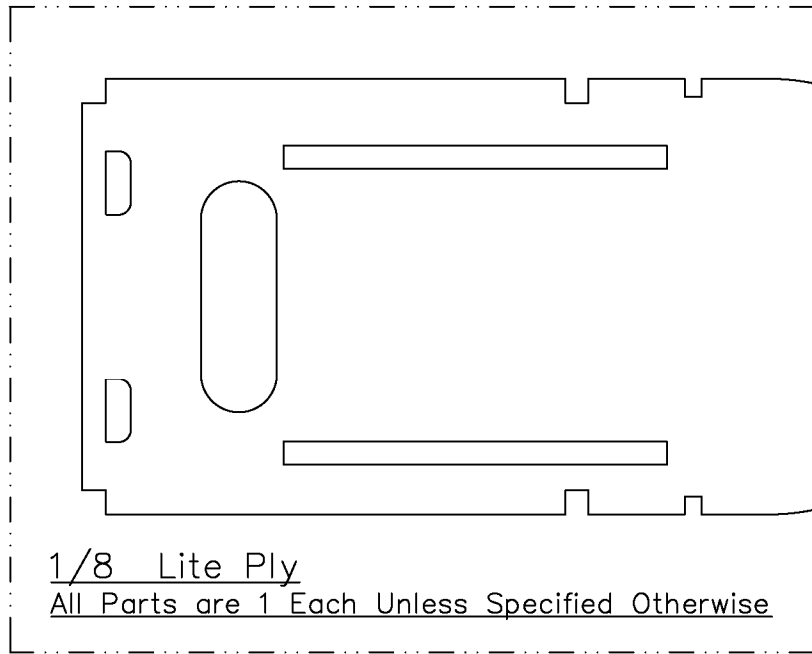
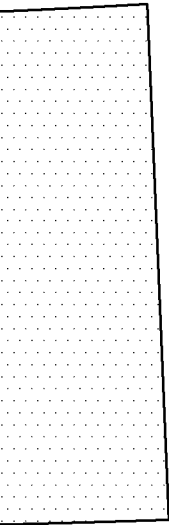


Aft Cowl



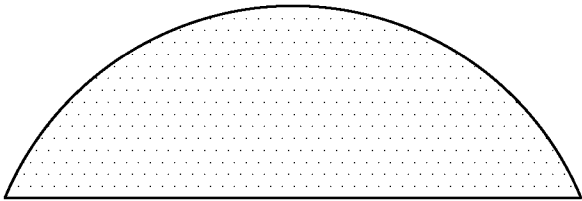
Alignment Jig
5 Artists Foam Board



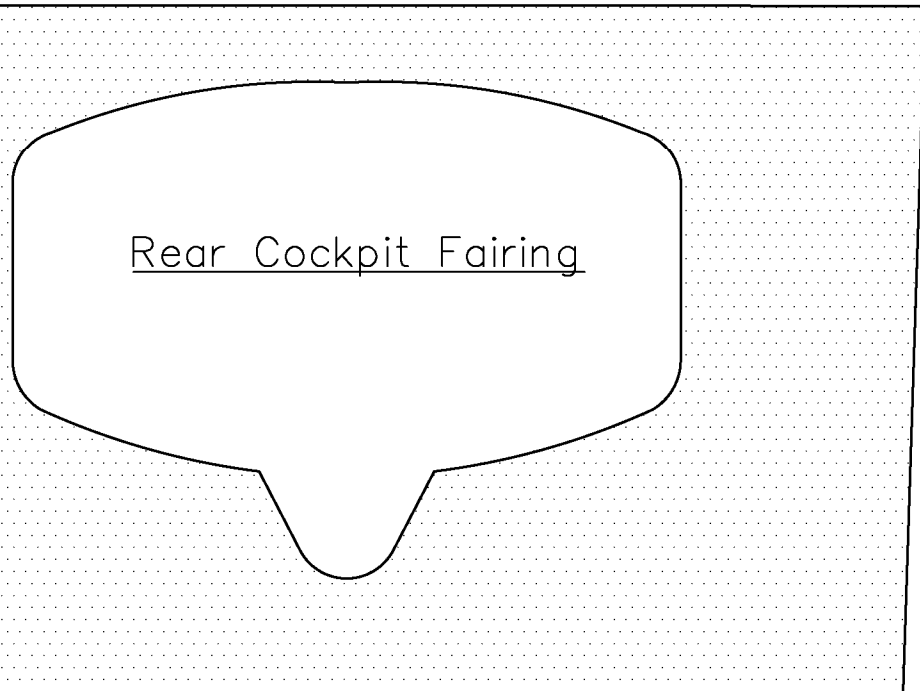


1/8 Lite Ply

All Parts are 1 Each Unless Specified Otherwise



Windshields Cutting Pattern
Make from .008 Acetate 2 Req.



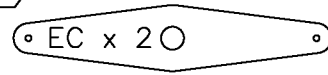
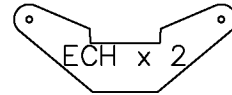
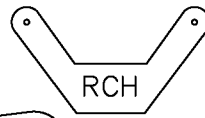
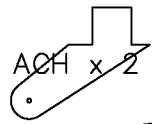
Rear Cockpit Fairing

1/16 Balsa

All Parts are 1 Each Unless Specified Otherwise

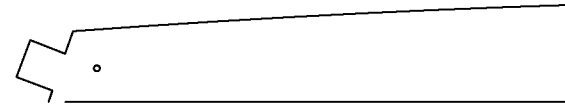
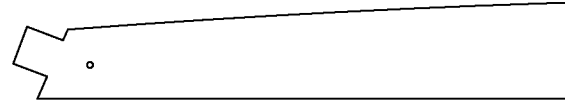
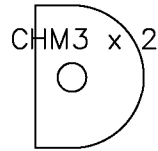
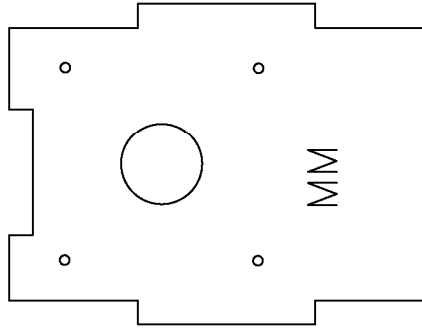
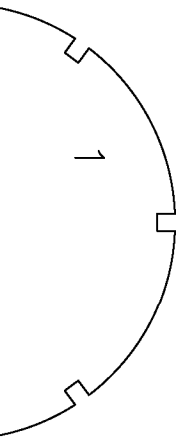
1/16 Ply

All Parts are 1 Each Unless Specified Otherwise

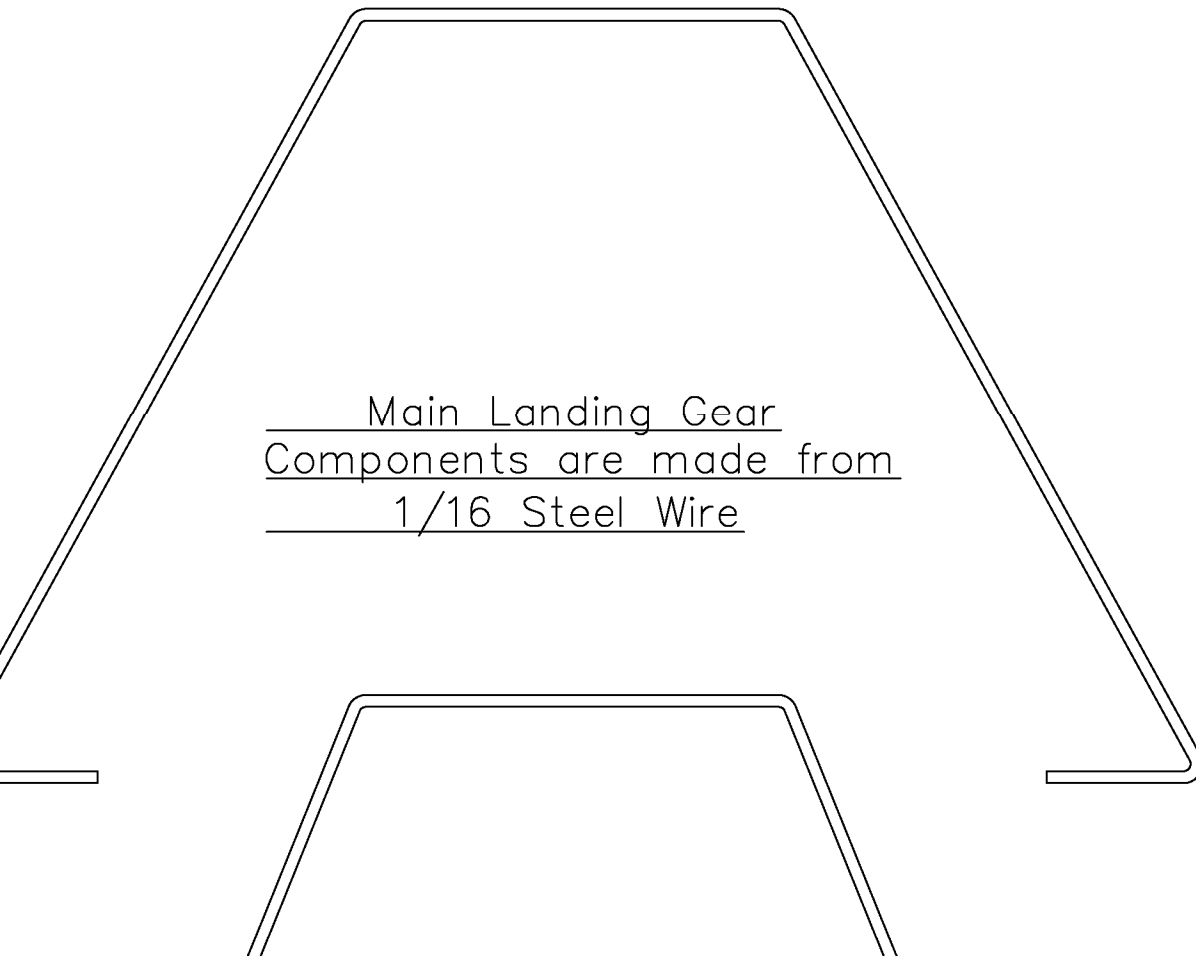


1/8 Balsa


All Parts Specified



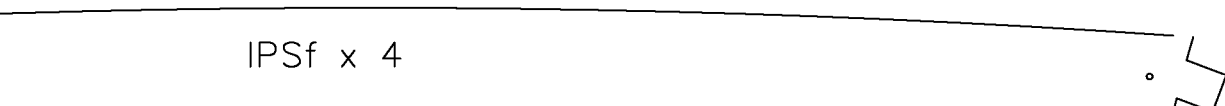
Main Landing Gear
Components are made from
1/16 Steel Wire



sq
are 1 Each Unless
Otherwise




IPSr x 4




IPSf x 4

Note: For those not prone to spending many hours hand cutting hundreds of parts, a Laser Cut Wood and Plastic Parts Pack as well as the 3" WWI Style Wheel Kits are available from manzanolaser.com



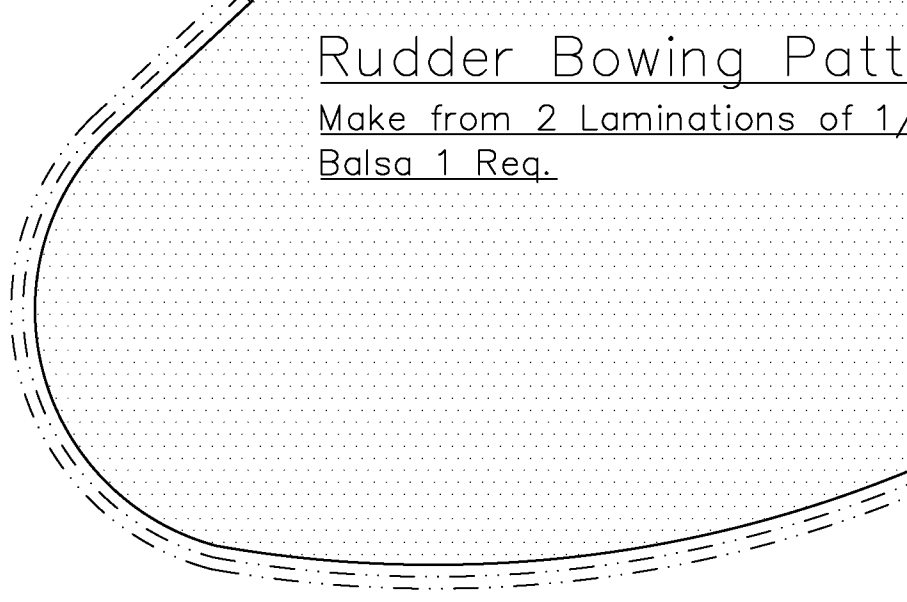
← Cabane Strut Rear
Make from 1/16 Steel
Wire 2 Req.



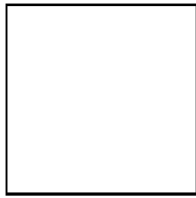
← Cabane Strut Rear
Make from 1/16 Steel
Wire 2 Req.

Rudder Bowing Pattern

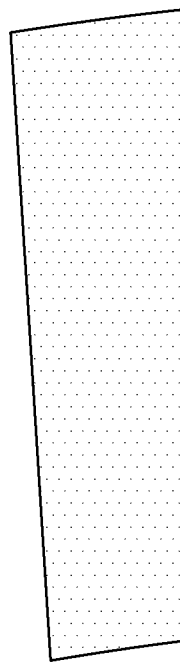
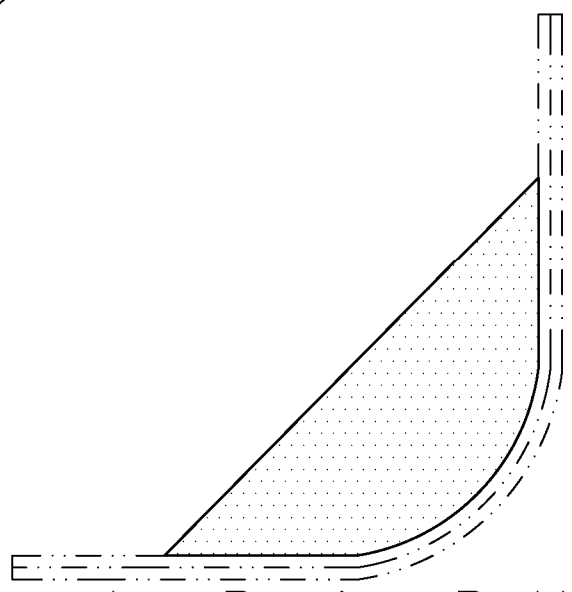
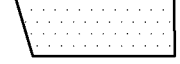
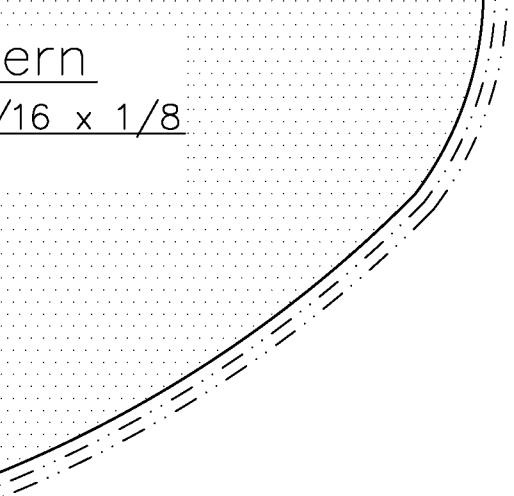
Make from 2 Laminations of 1/4
Balsa 1 Req.



1 inch reference square

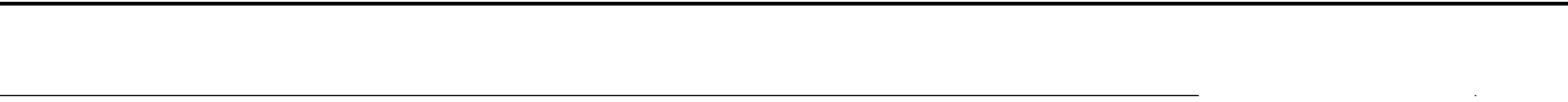


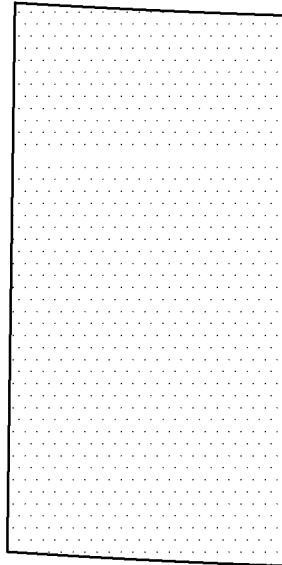
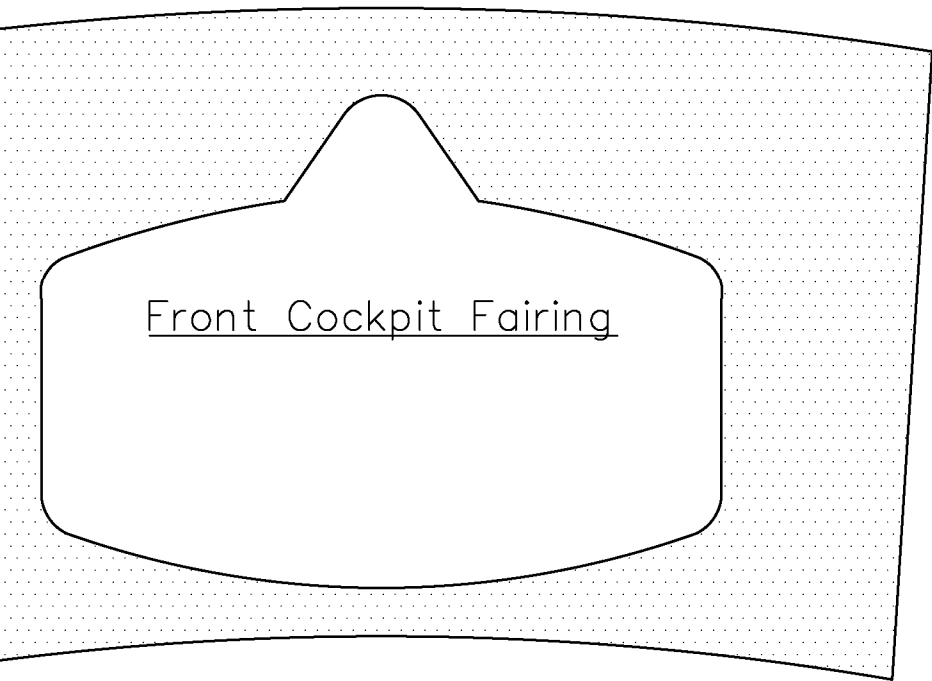
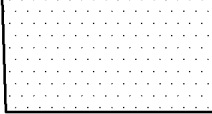
ern
/16 x 1/8

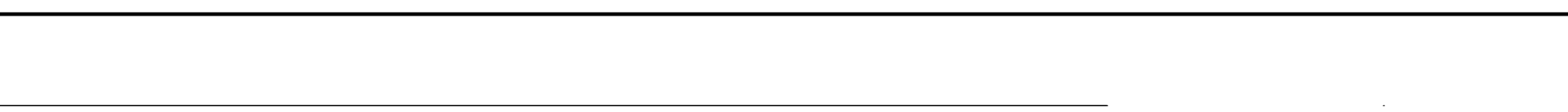
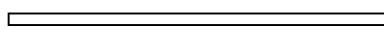
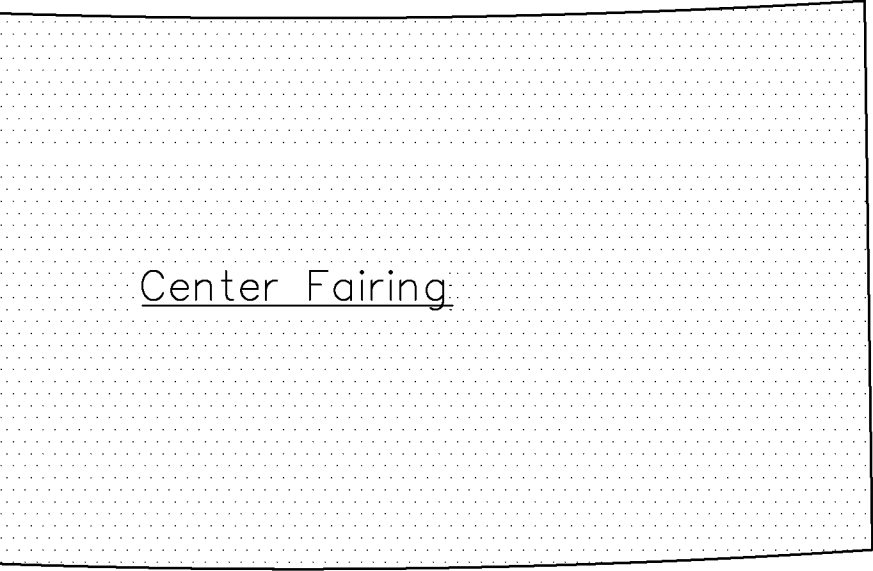


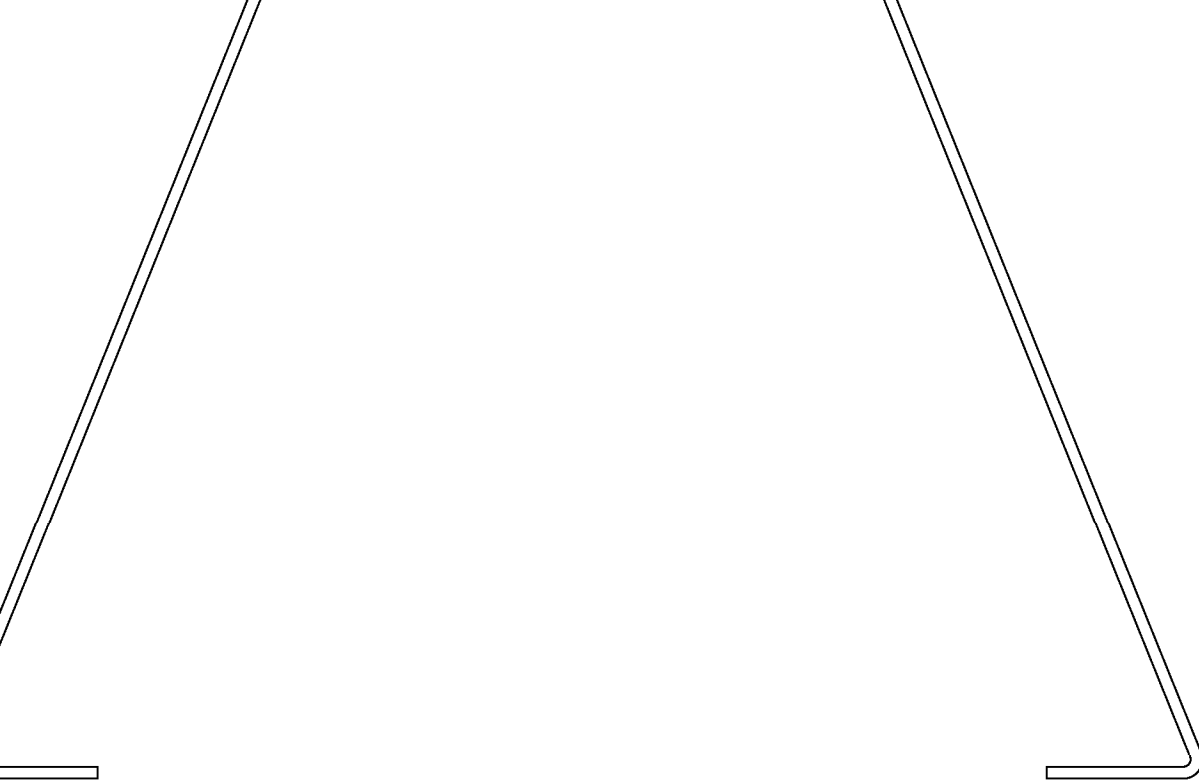
Elevator Bowing Pattern

Make from 2 Laminations of 1/16 x 1/8
Balsa 4 Req.









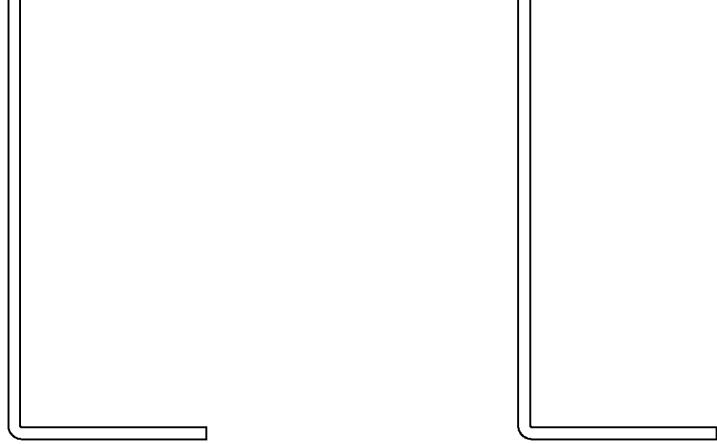
Copyright 2023



and **ModelAviation**

Copying for resale of this drawing without
the written approval or consent of AMA
is expressly prohibited.

Plan No. 1139



R.A.F. B.E. 2c

Span: 50"

Length: 39"

Wing Area: 725 Sq. In.

Flying Weight: 26.5 oz.

Wing Loading: 5.25 Oz./ Sq. Ft.

Designed by: Pat Tritle

Sheet 3 of 3 © 6-23-2021