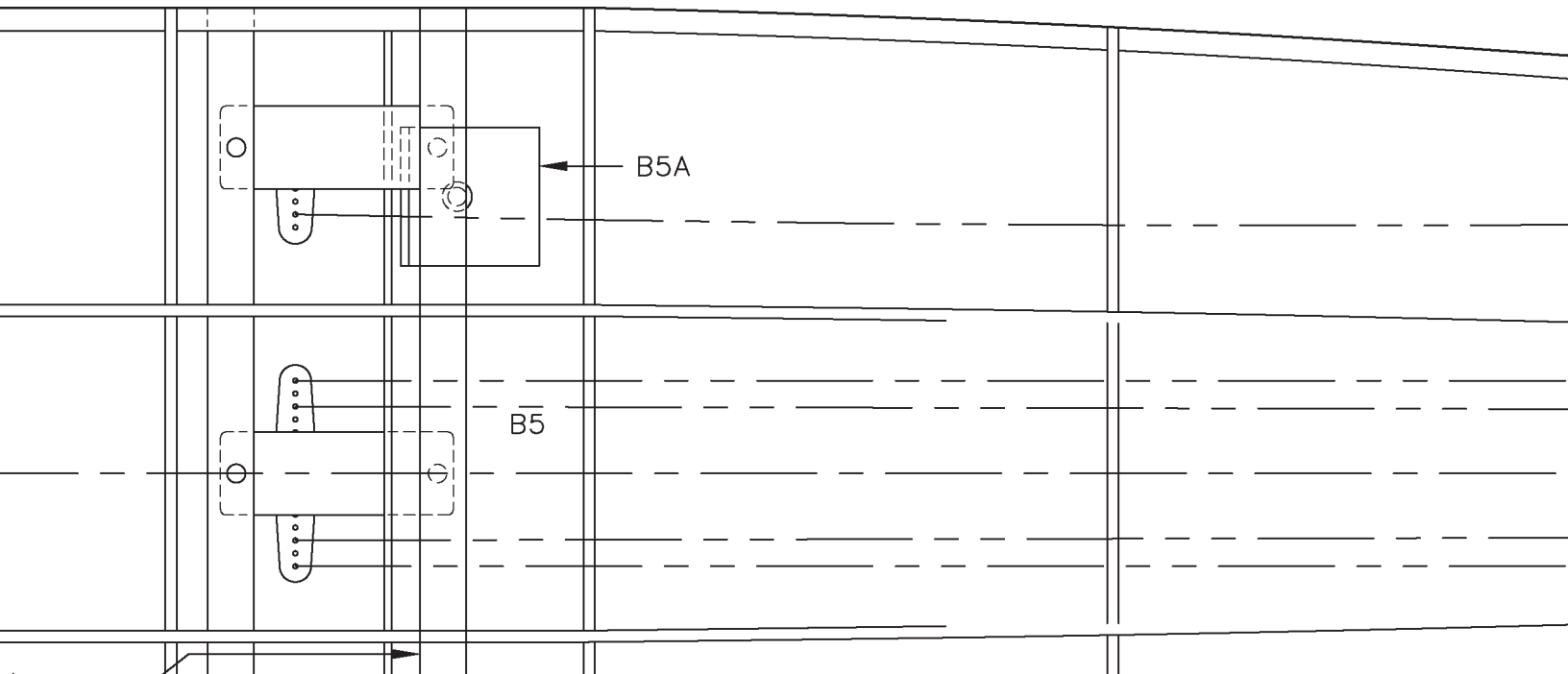
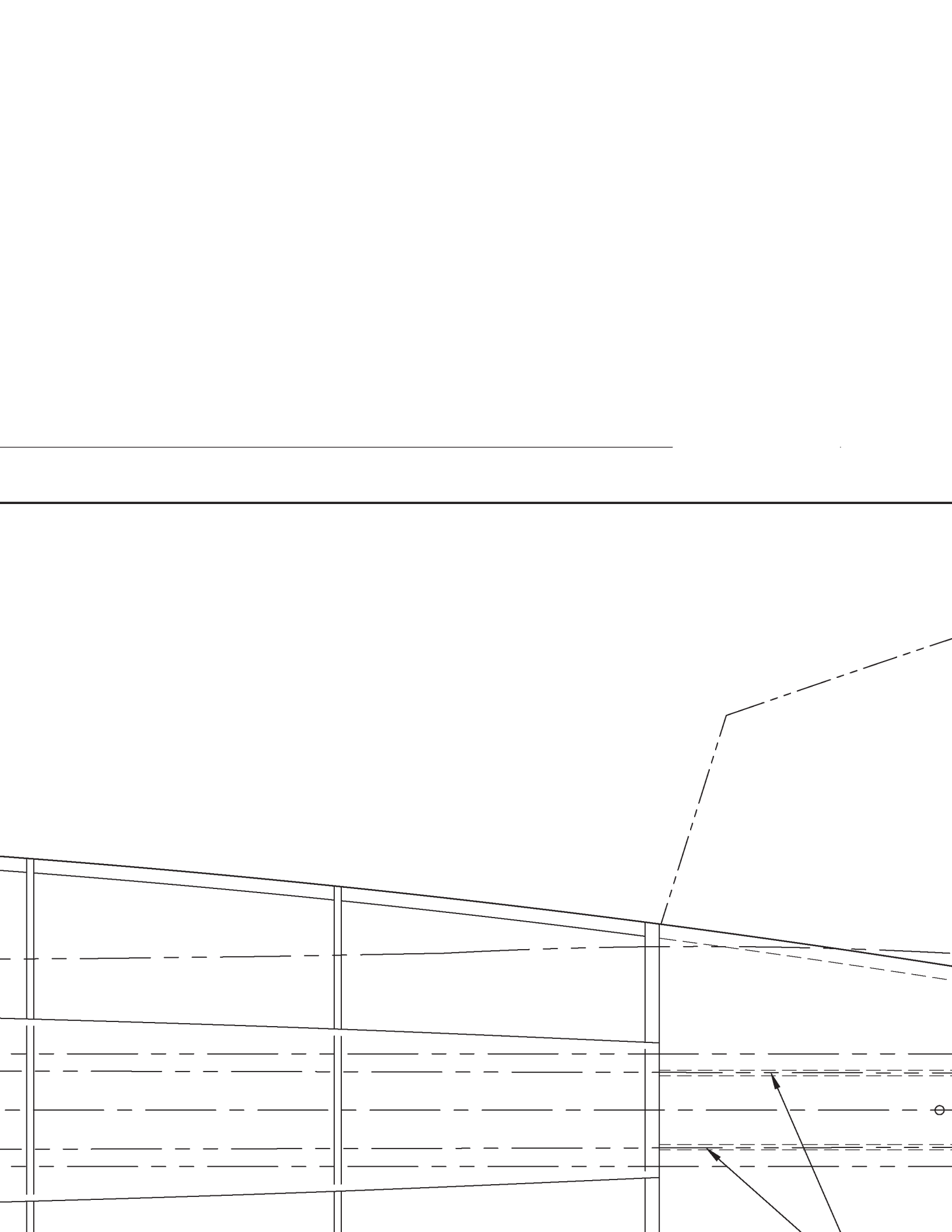
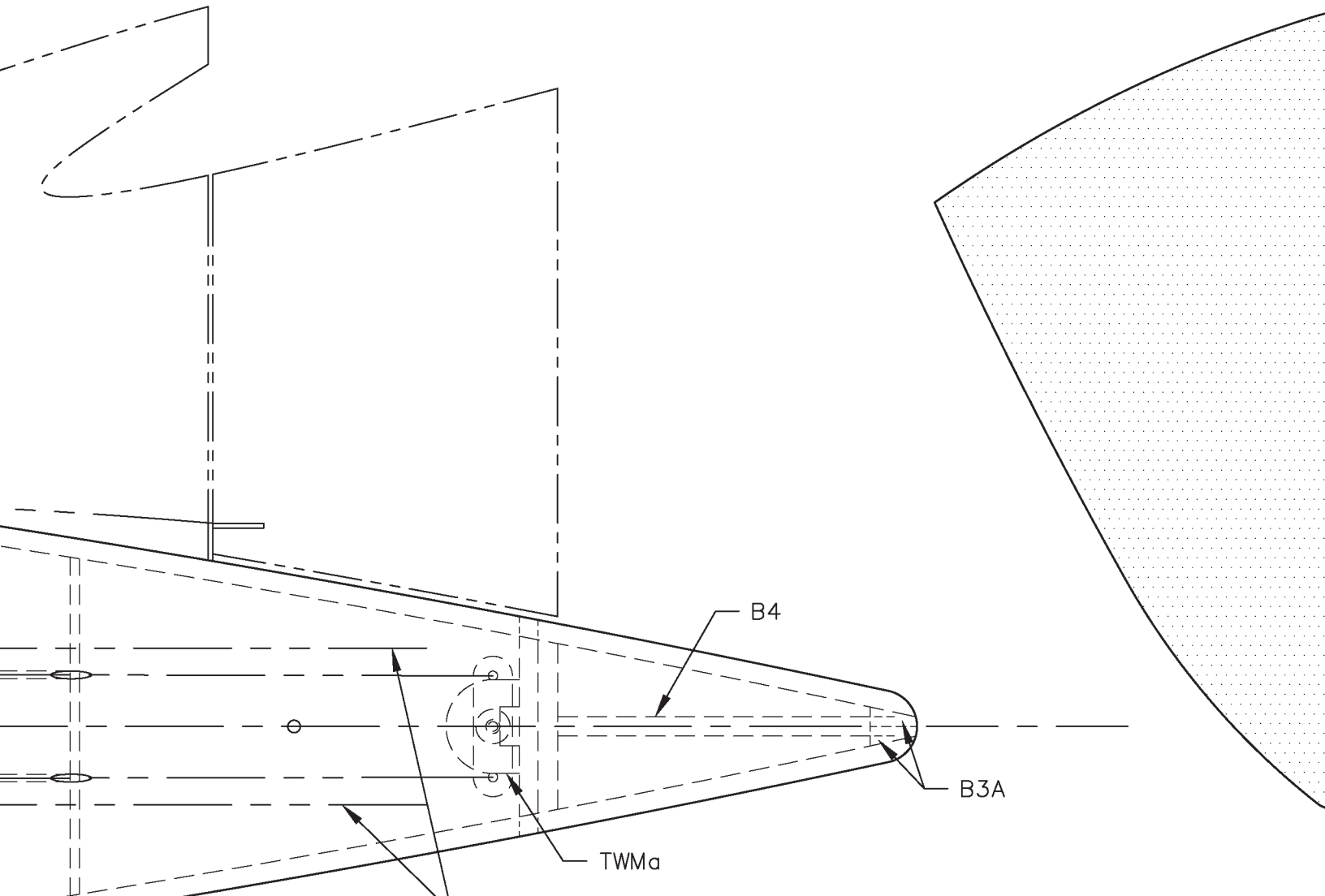
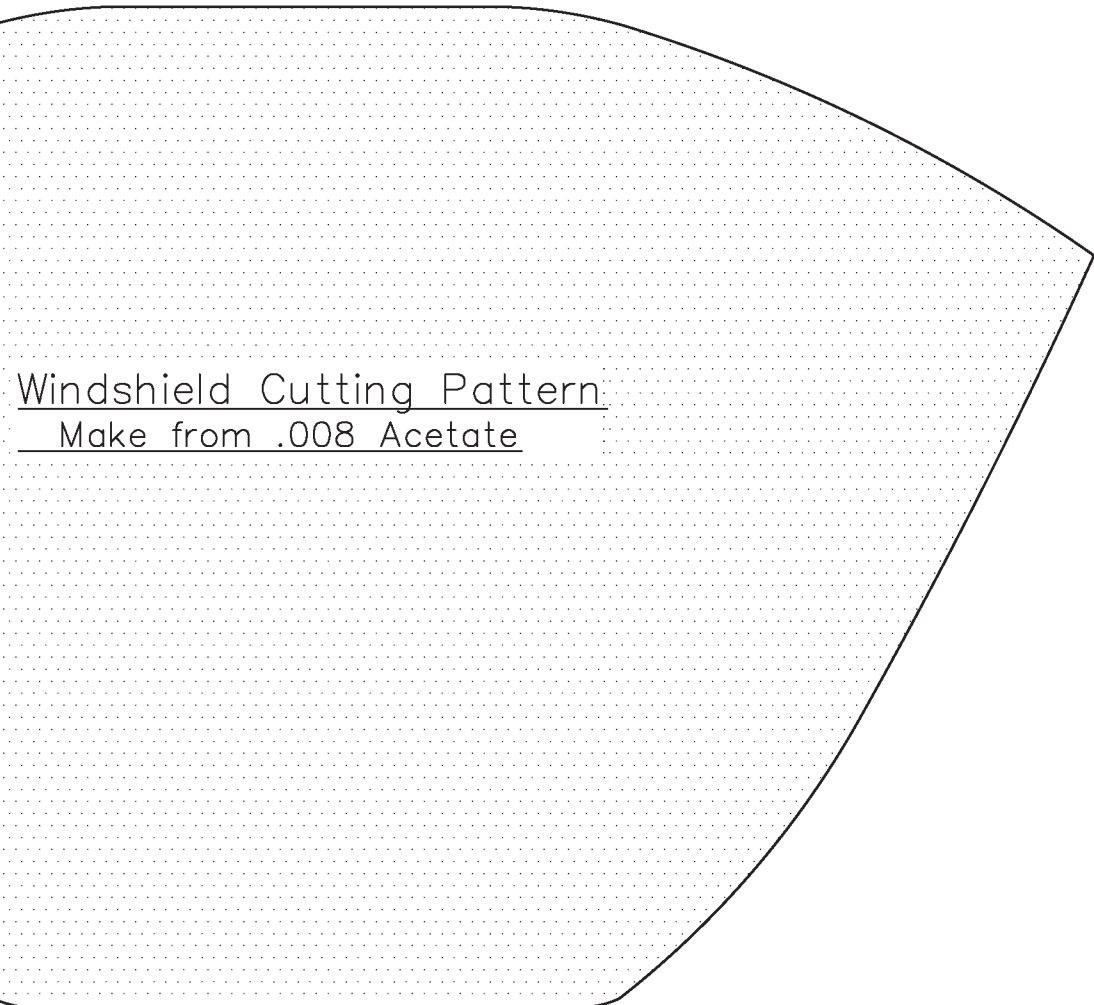


B2

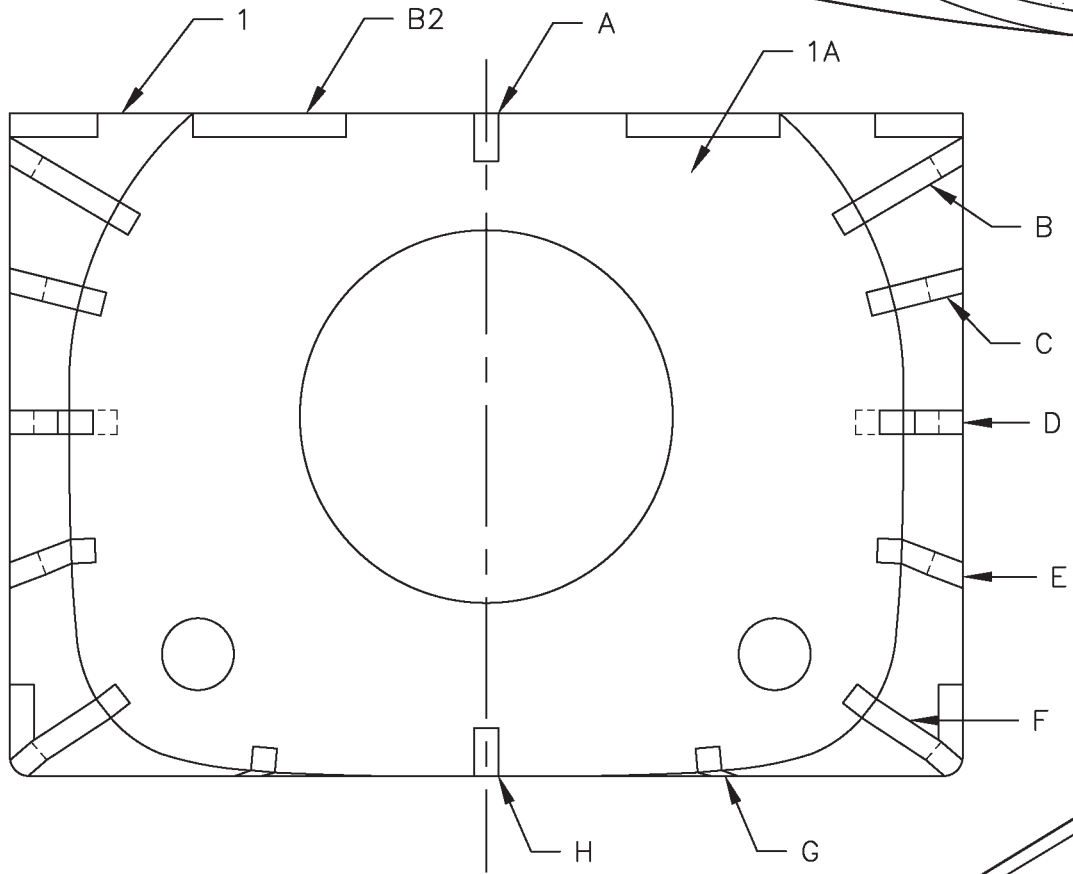




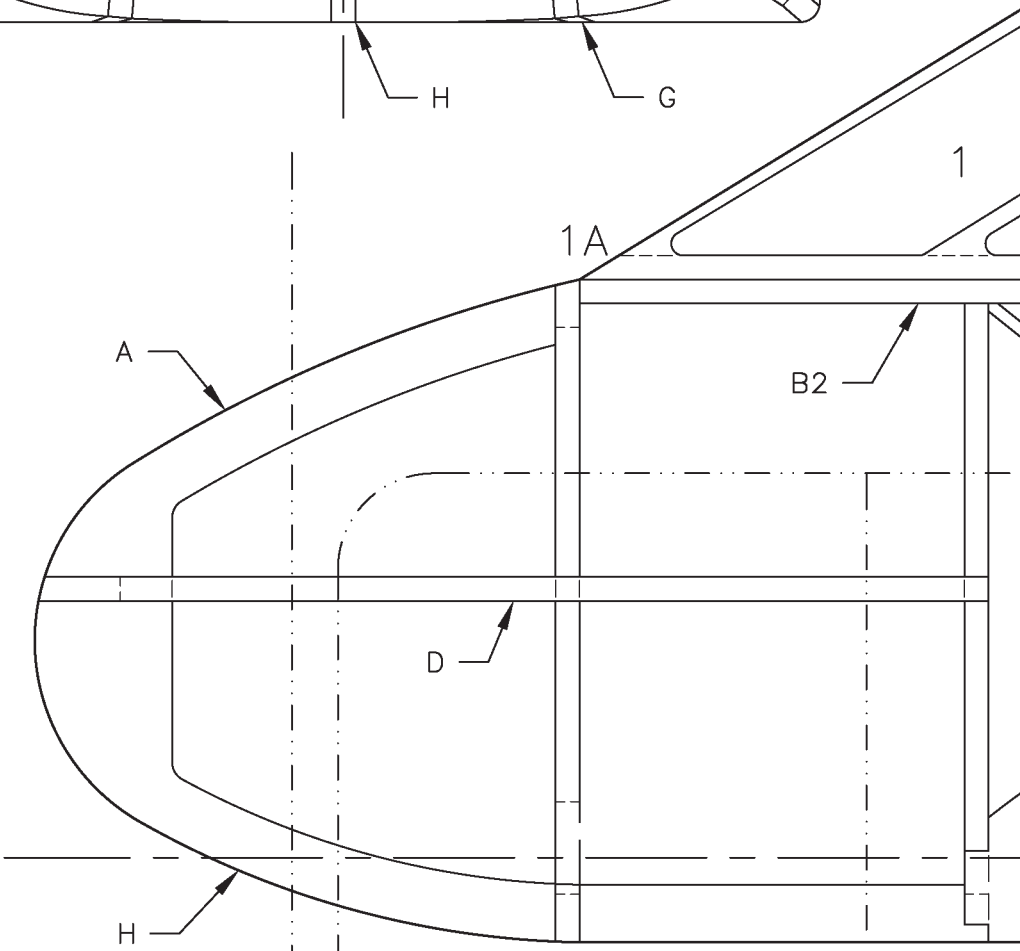




Windshield Cutting Pattern:
Make from .008 Acetate



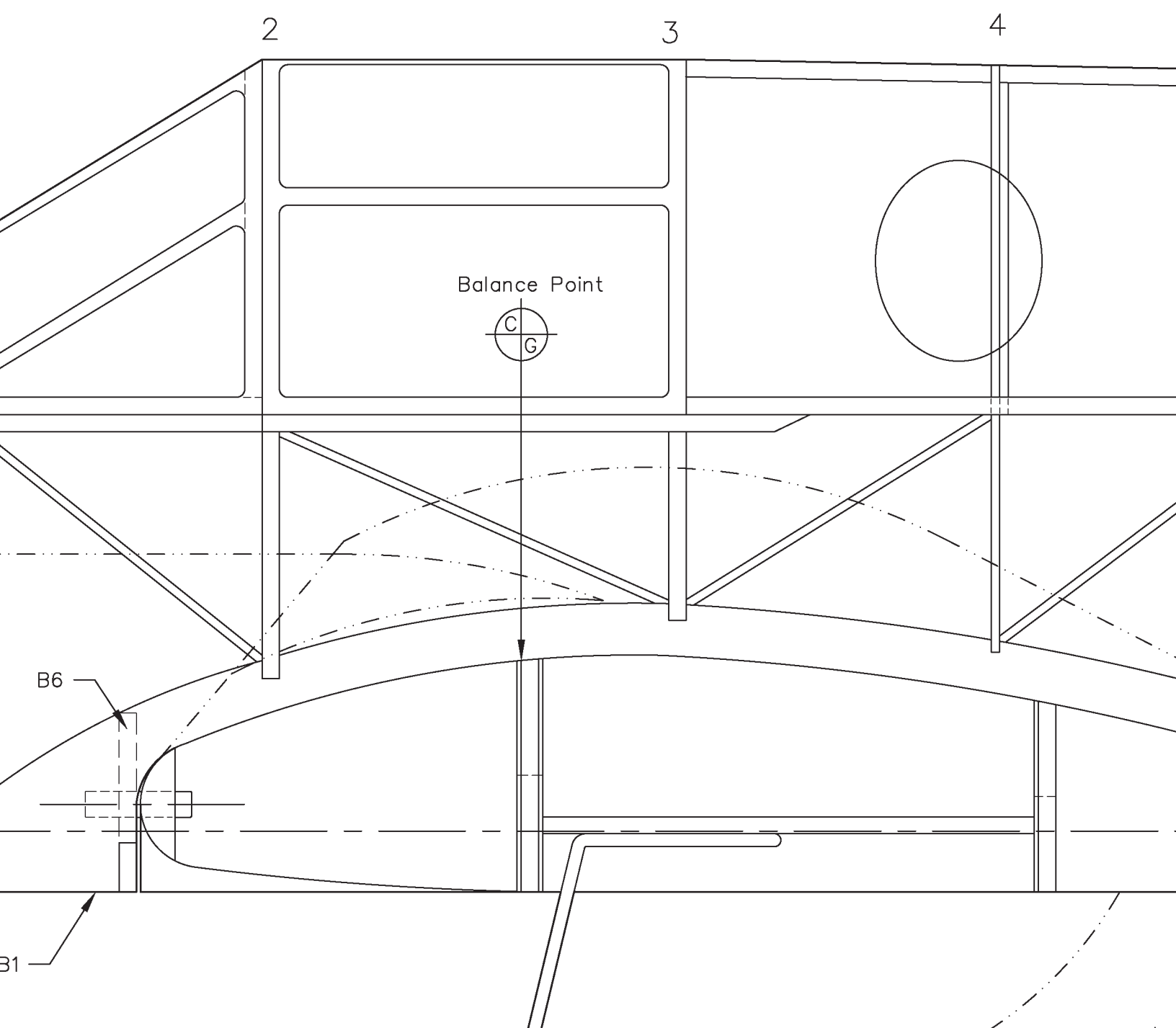
No
De

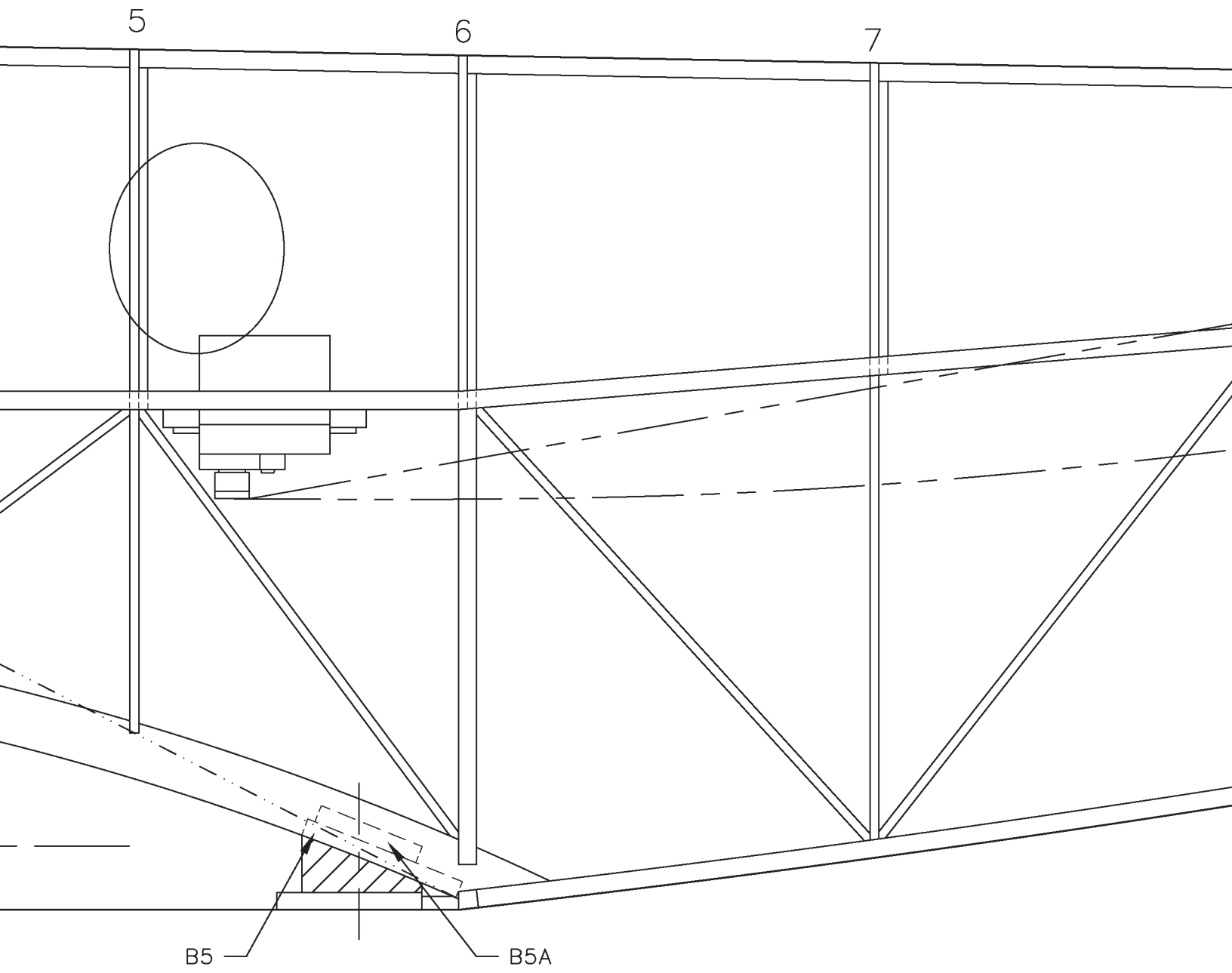




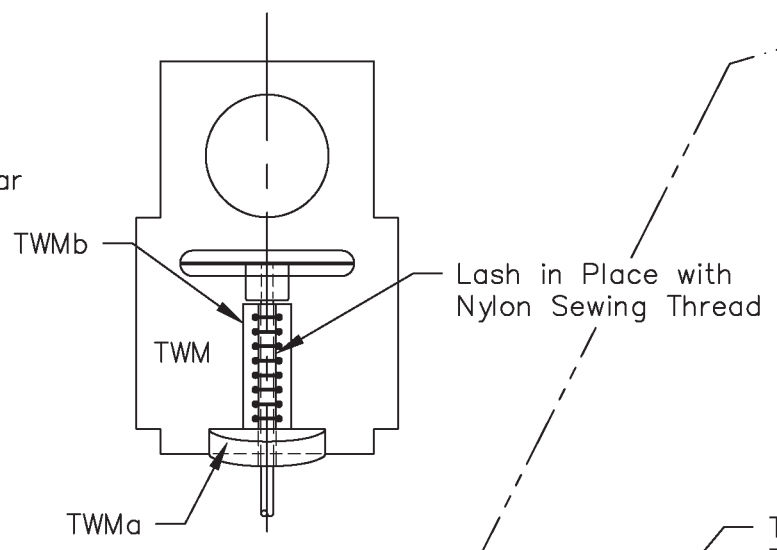
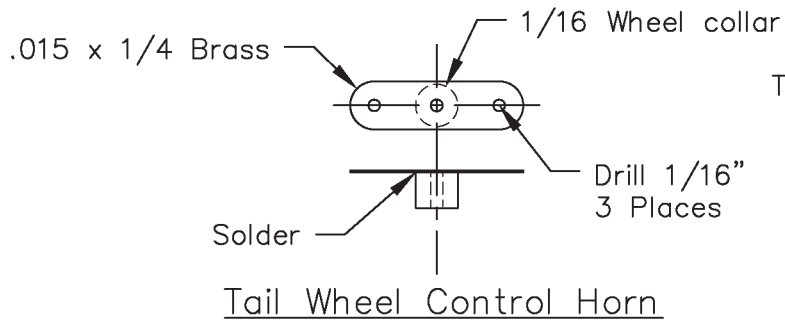
3/16 Dia. x 1/16 Disc Magnets
to Retain the Cockpit Assembly

se Assembly
tail Drawing





Tail Wheel Control

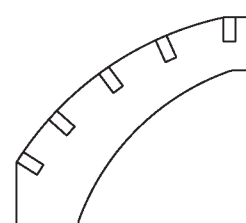
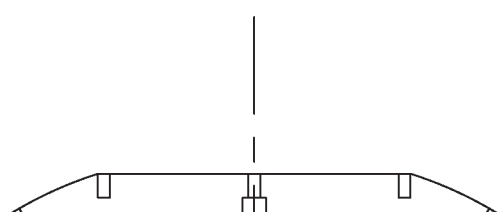
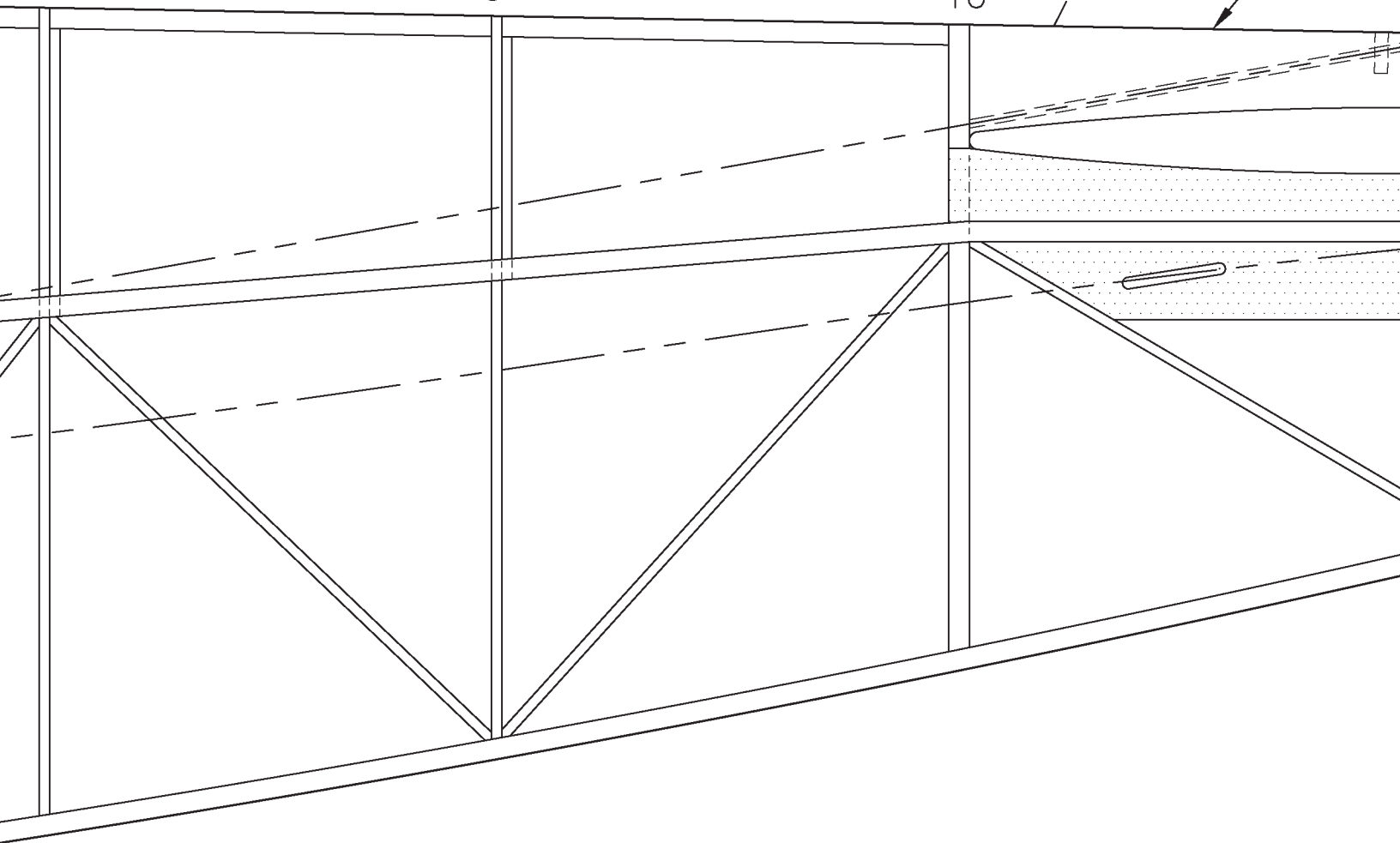


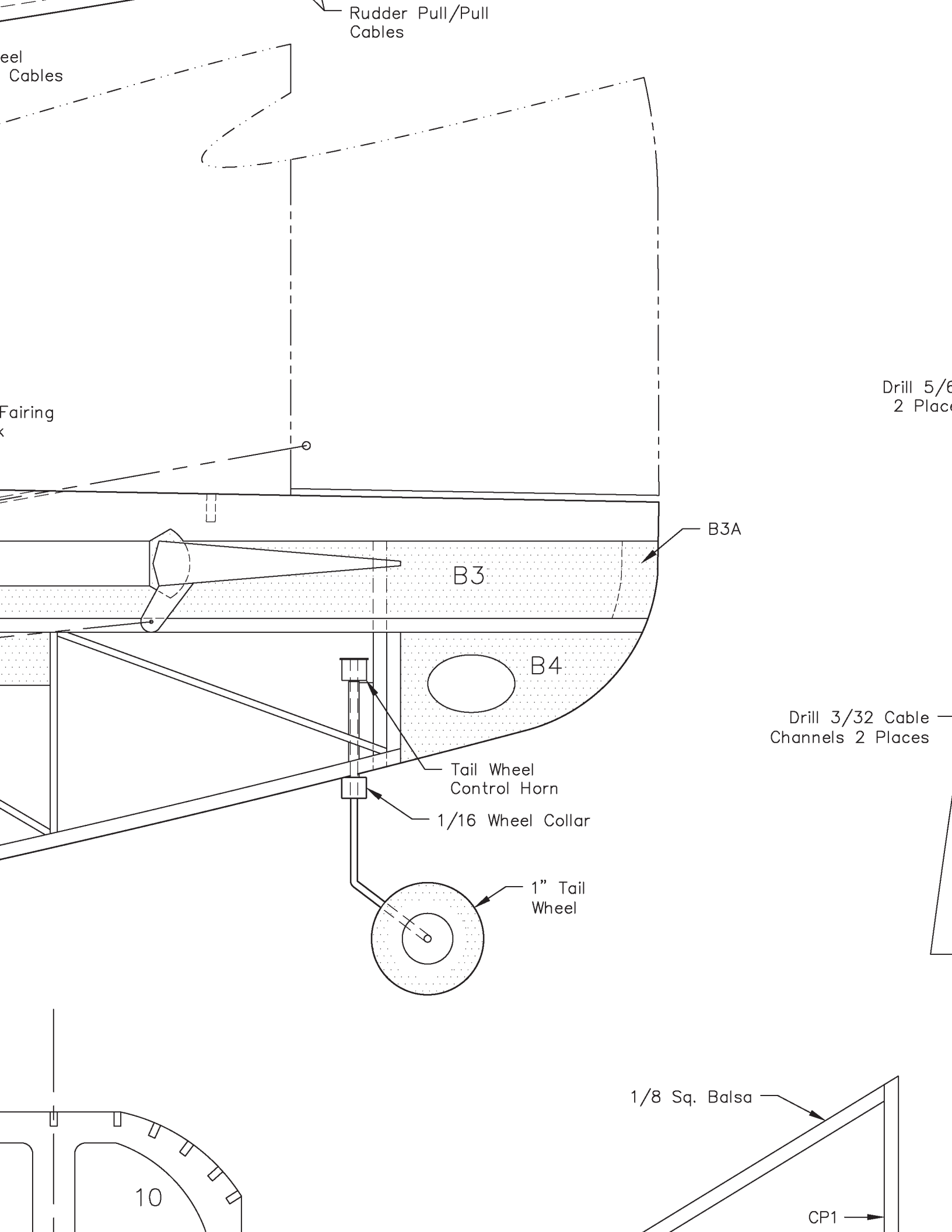
Tail Block

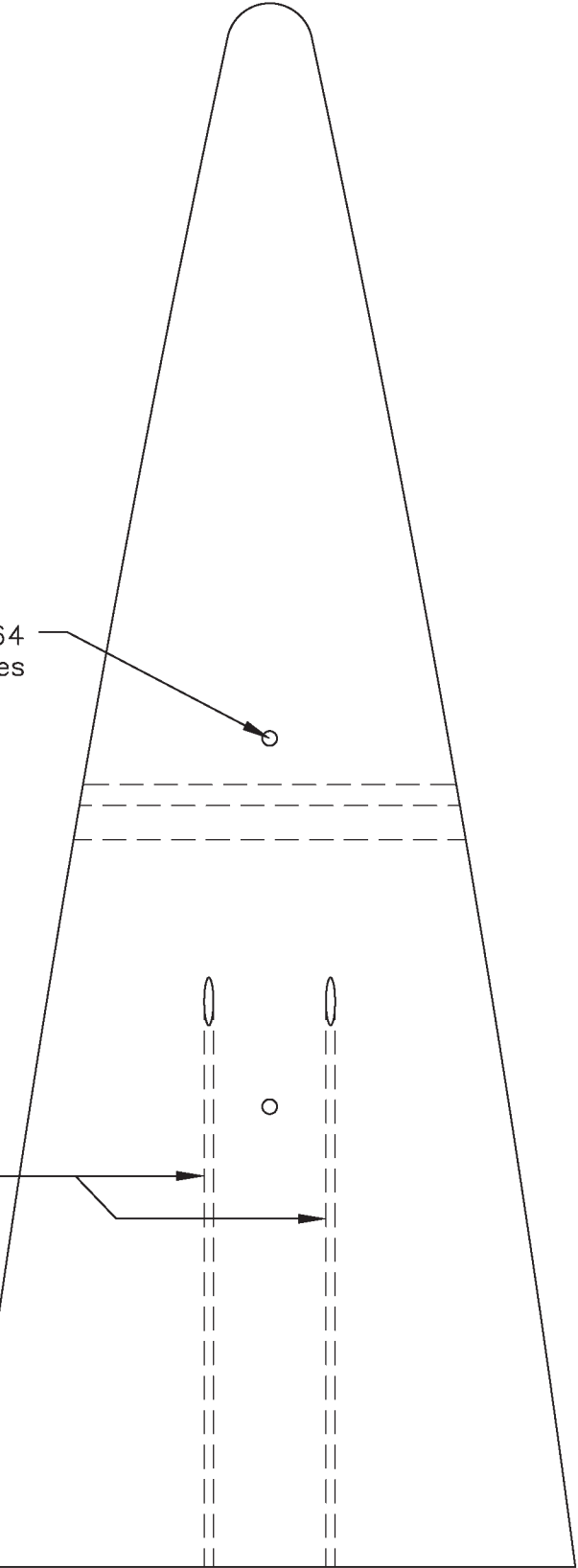
8

9

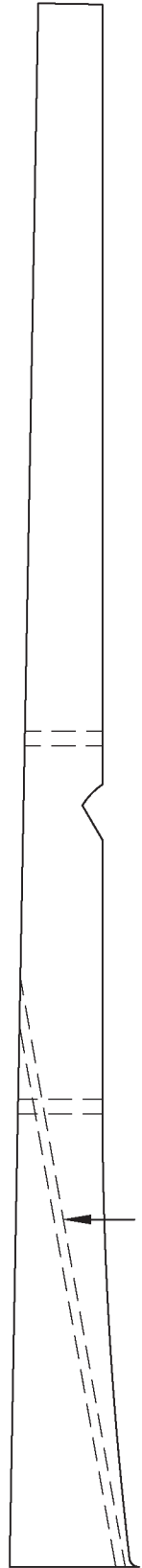
10





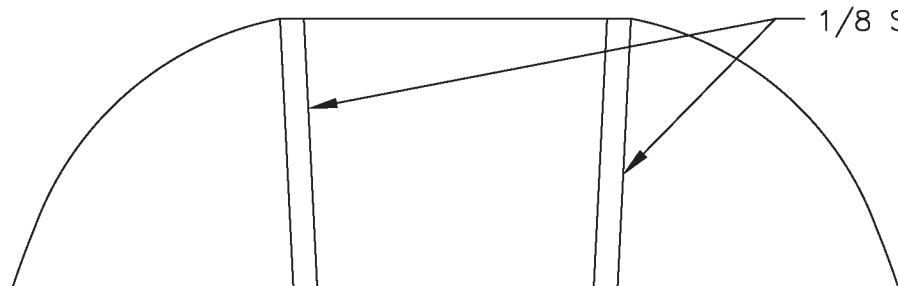


1/8
es

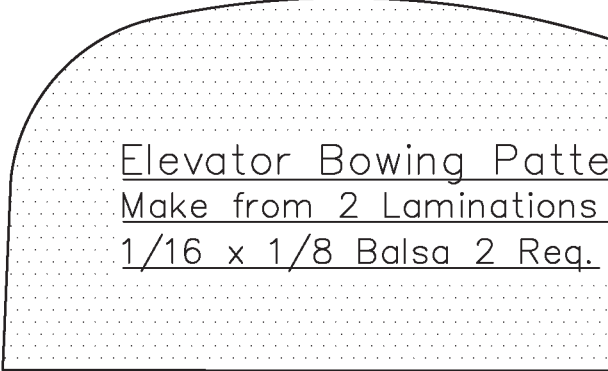


Cable Channels

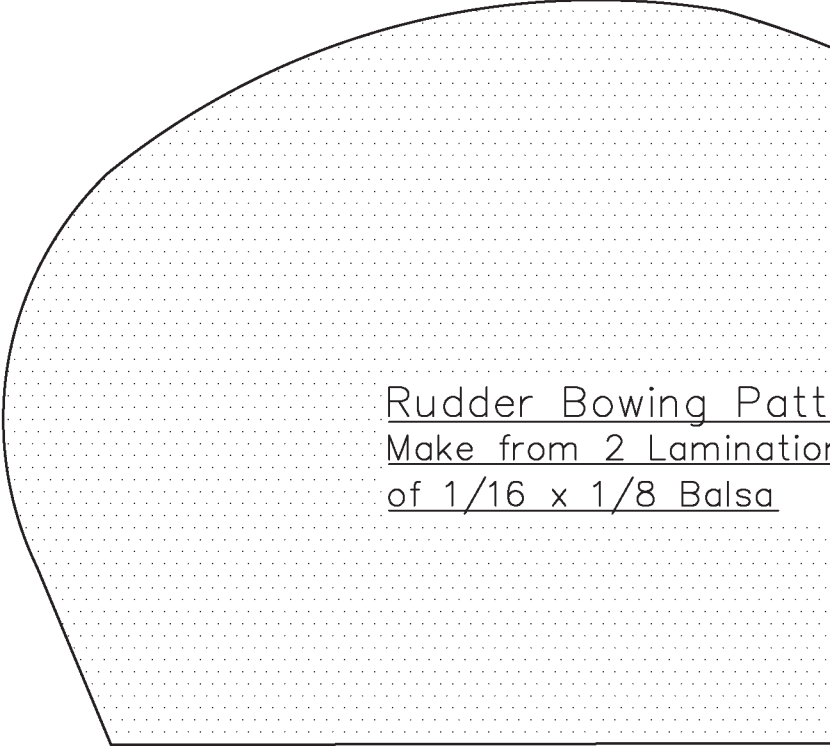
Tail Fairing Block



1/8 Sq. Balsa



Elevator Bowing Pattern
Make from 2 Laminations
1/16 x 1/8 Balsa 2 Req.



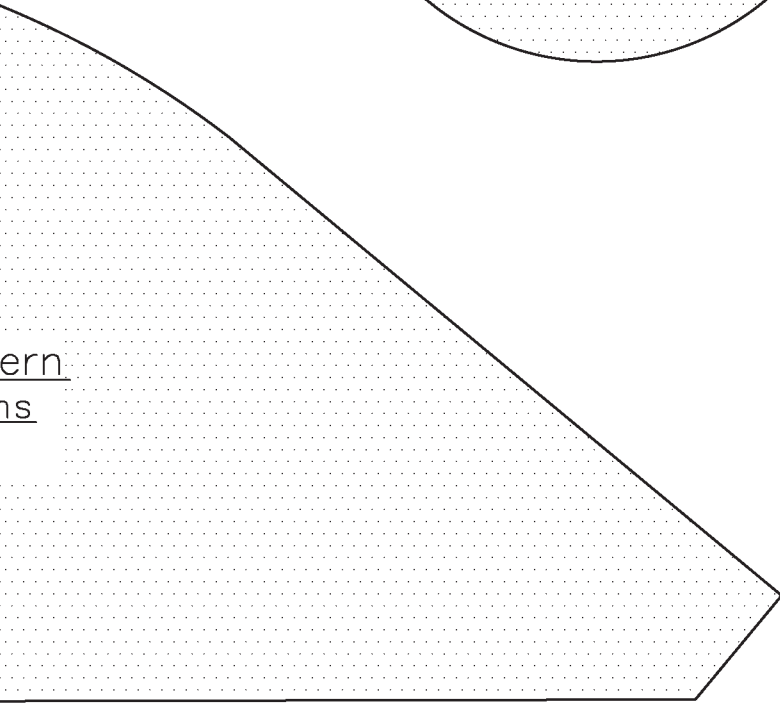
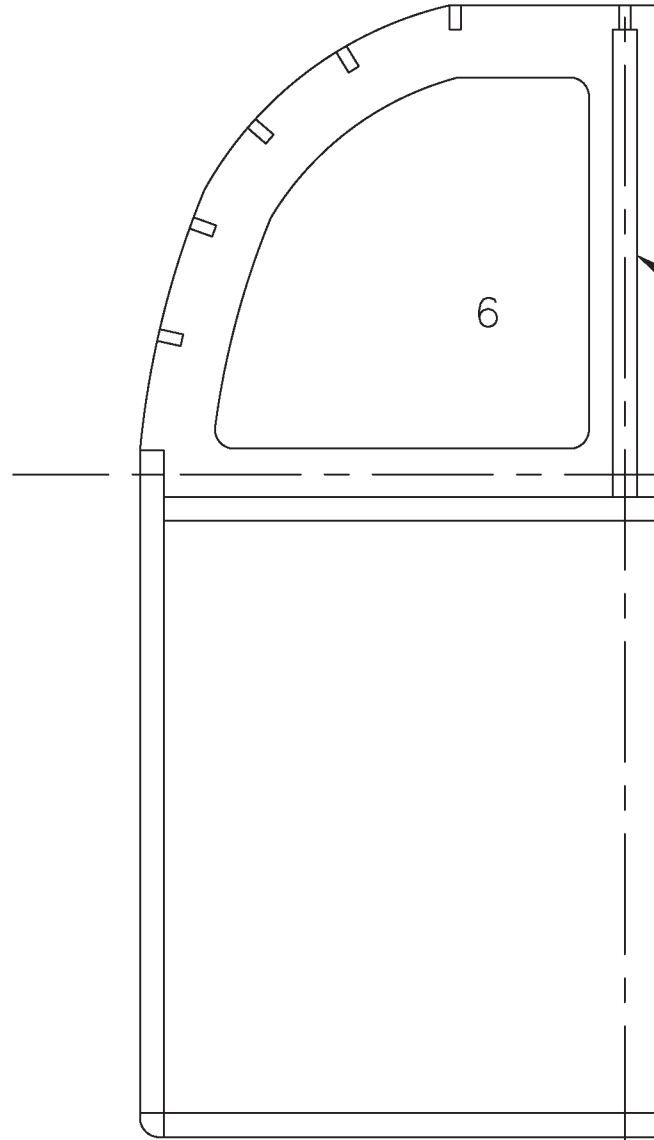
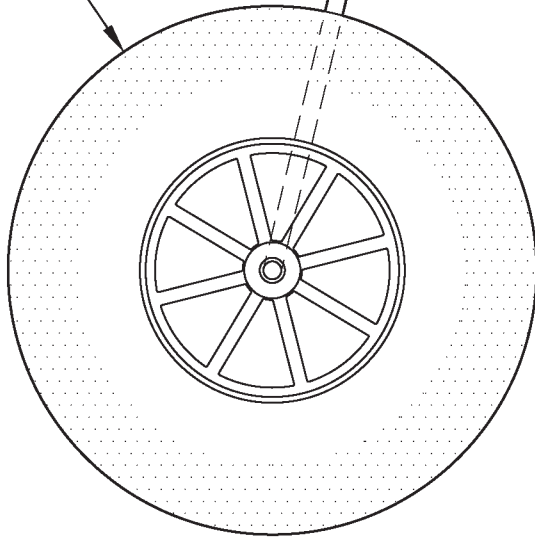
Rudder Bowing Pattern
Make from 2 Laminations
of 1/16 x 1/8 Balsa

1/8 Shims -
12 Places

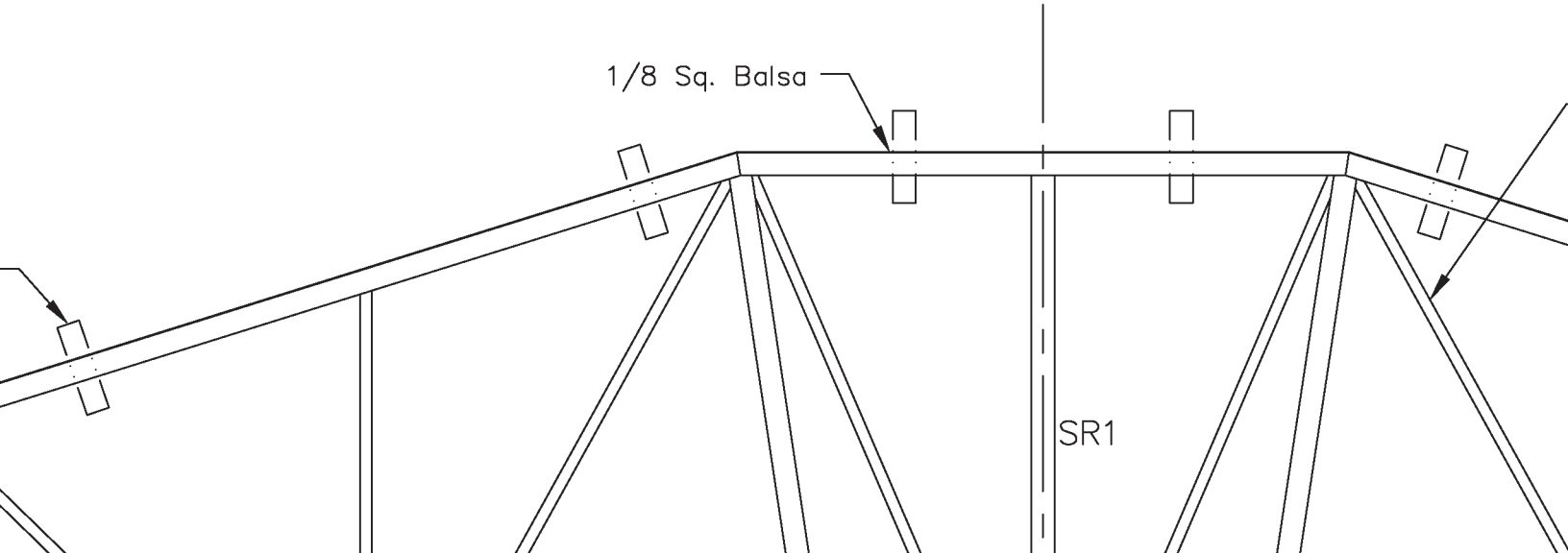
Tip Bows are 2 Laminations

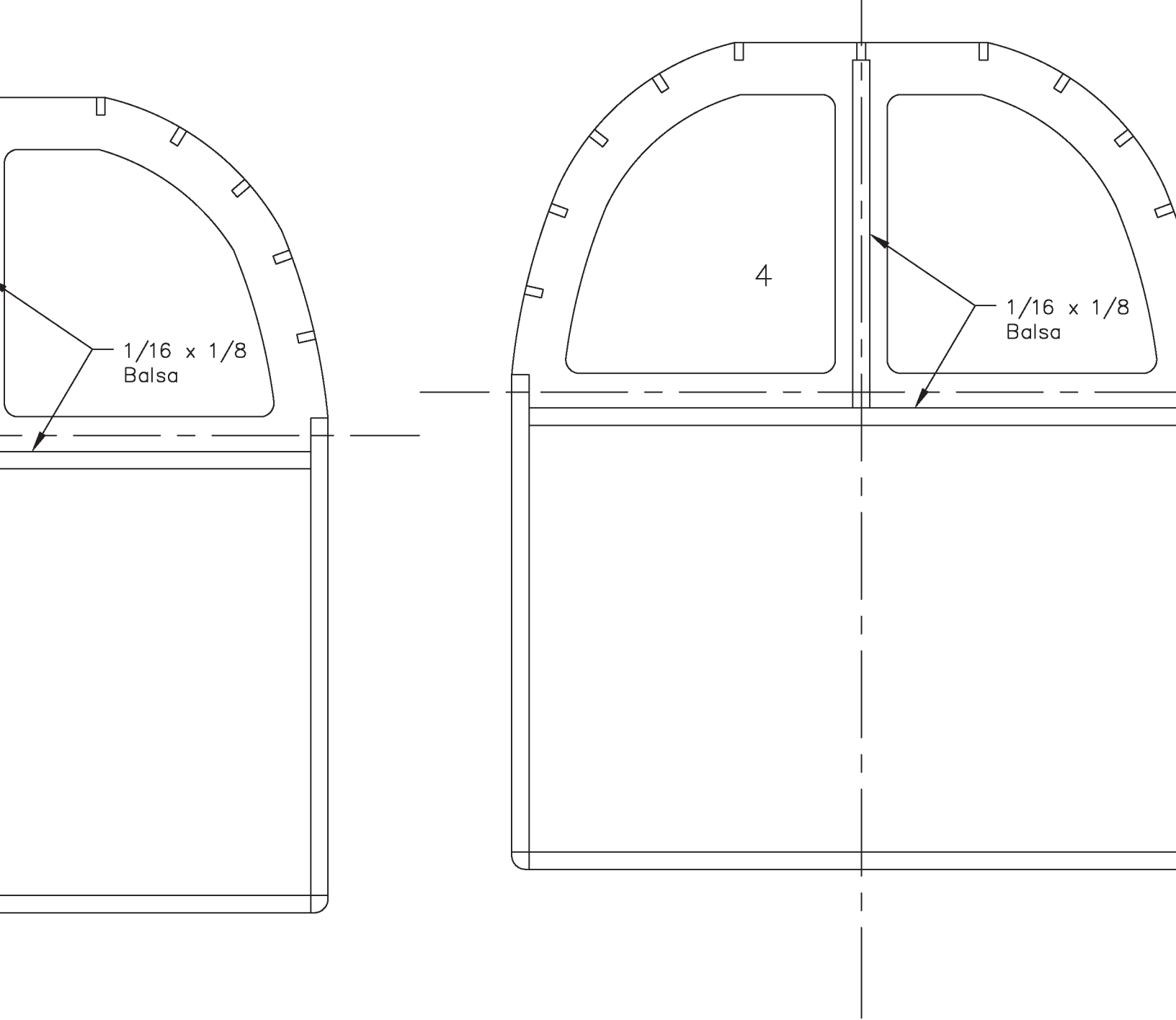


2 3/4" Main
Wheels

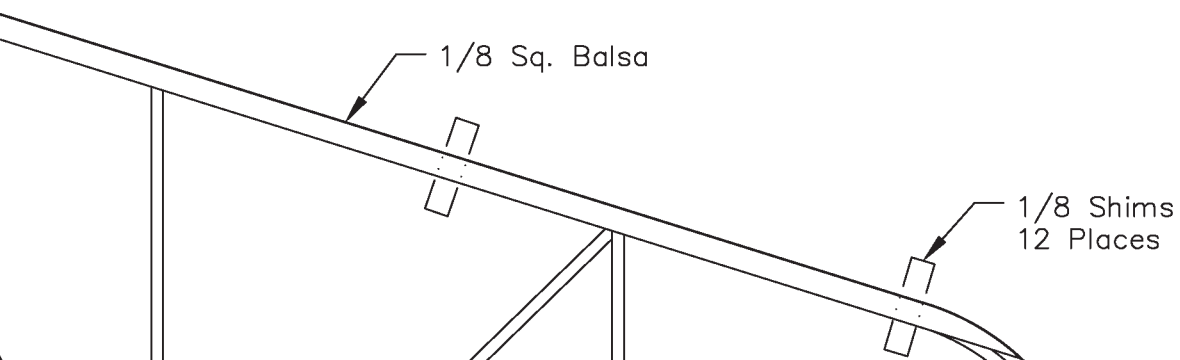


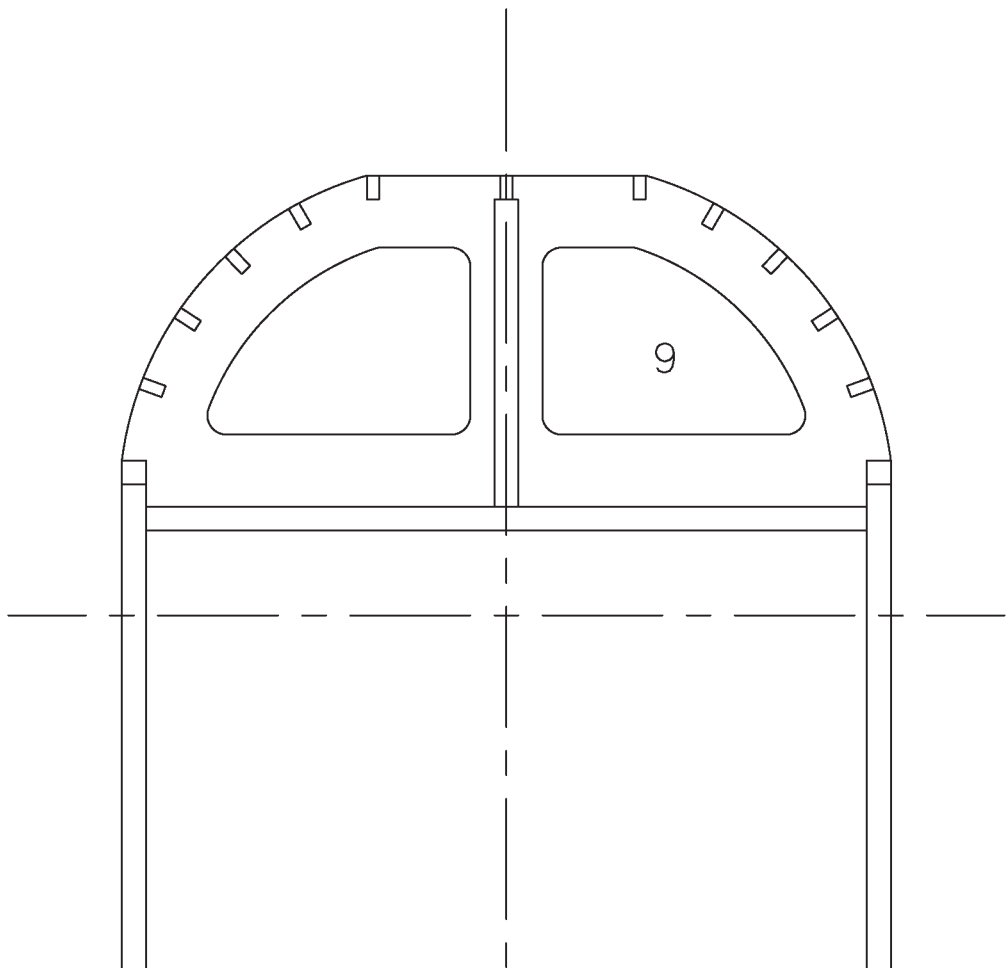
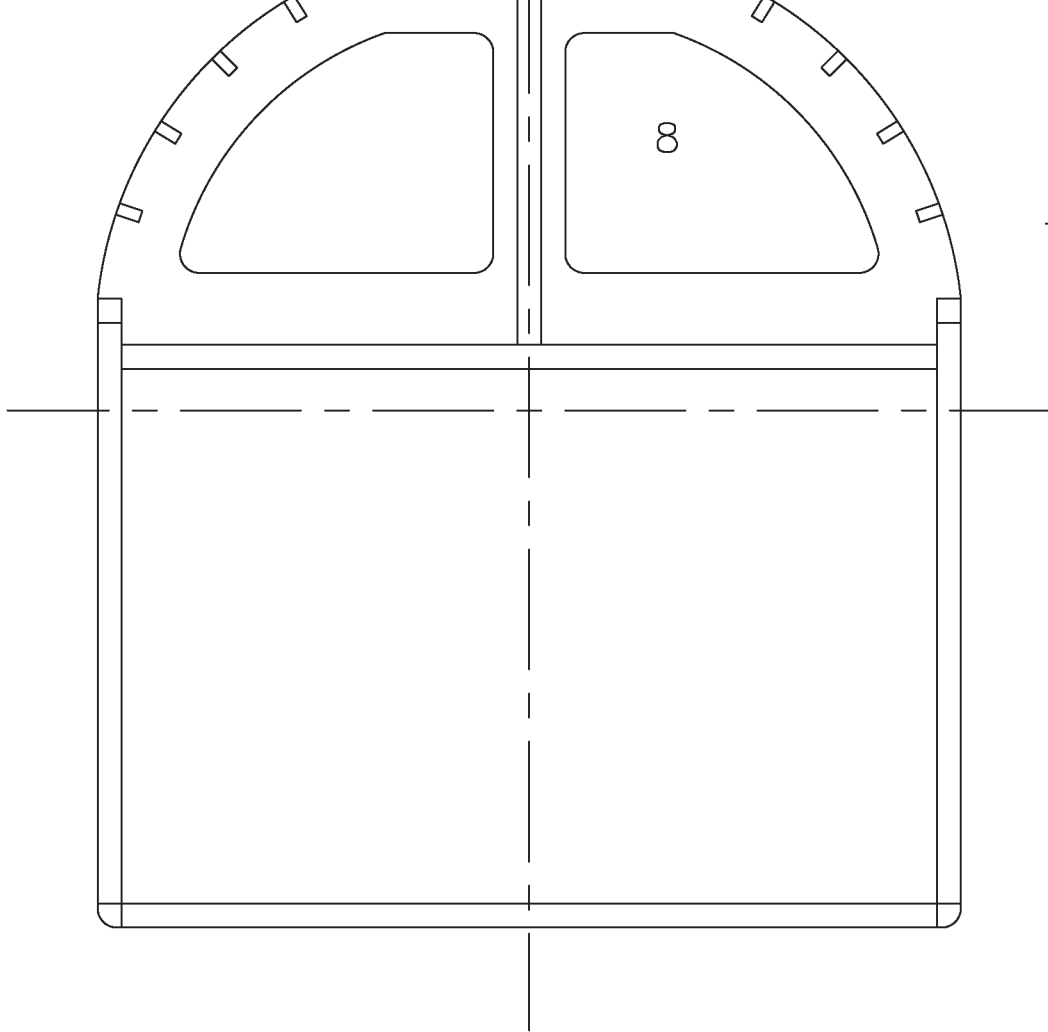
1/8 Sq. Balsa



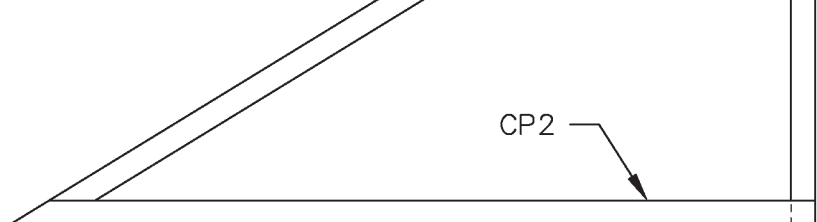
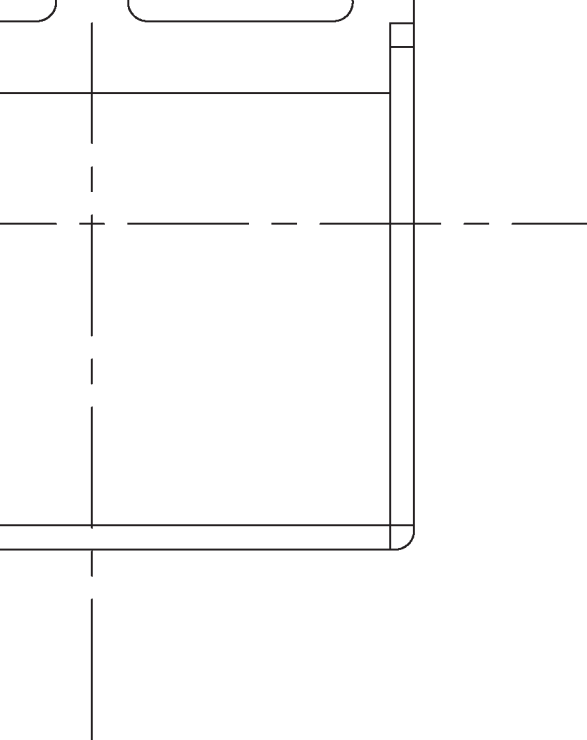


All Diagonal Bracing
is 1/16 Sq. Bass Wood
Glued in on Center



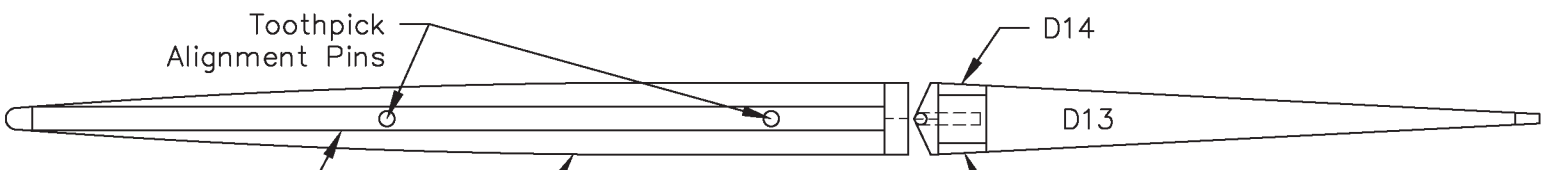
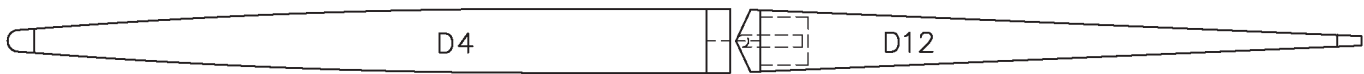


GLU

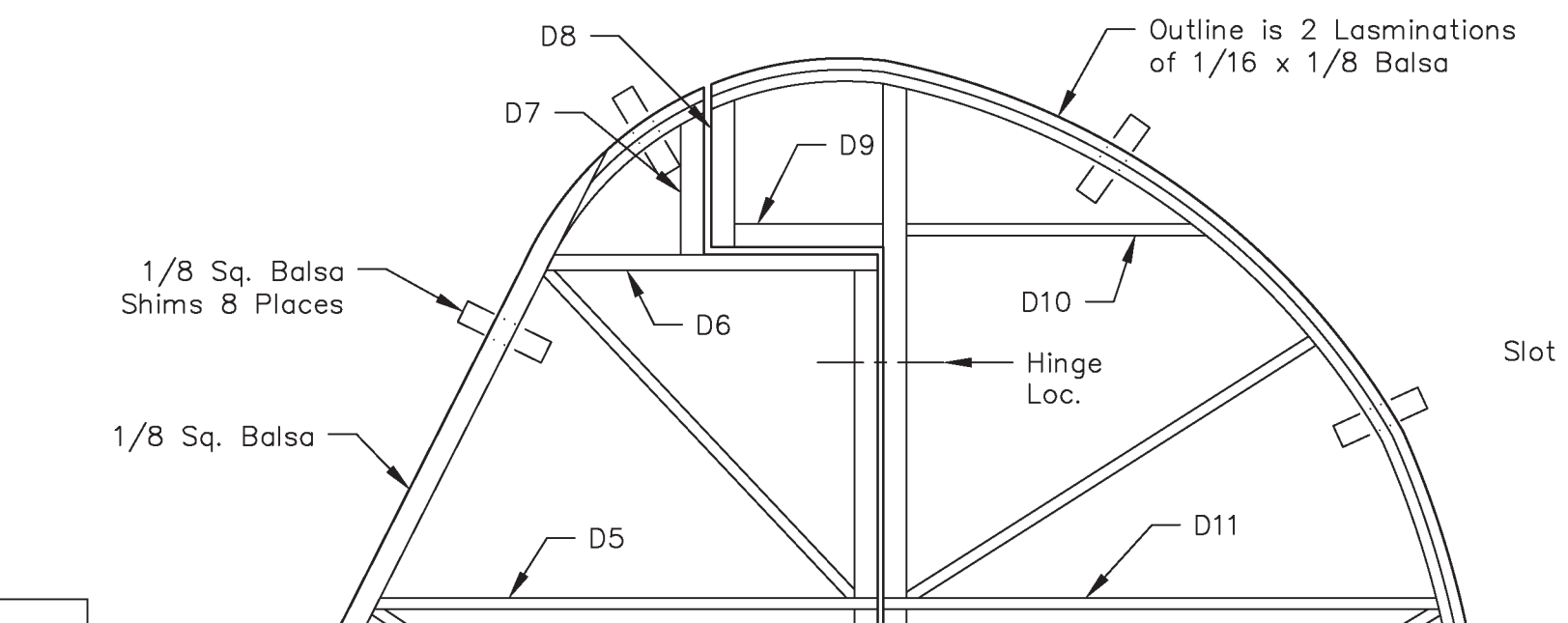


Removable Canopy Hatch Assembly

3/16 x 1/16 Disc
Magnets for Hatch
Retention 4 Places
Glue in Flush w/ Bottom



1/8 Sq. Balsa
glued in on Center



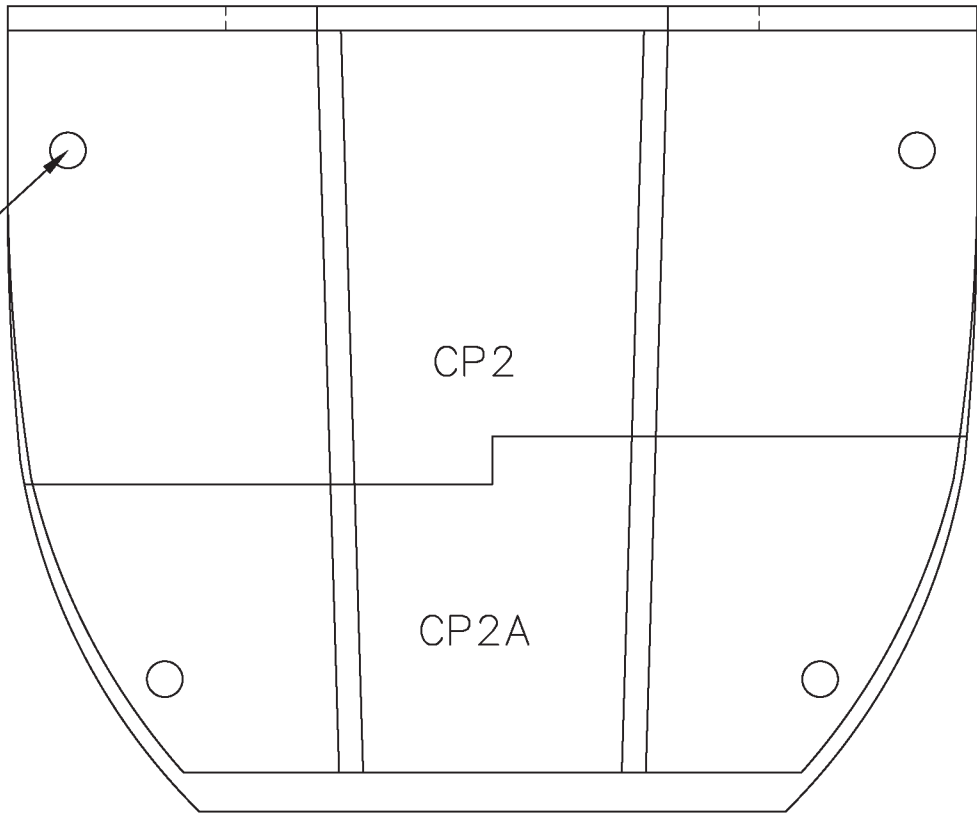
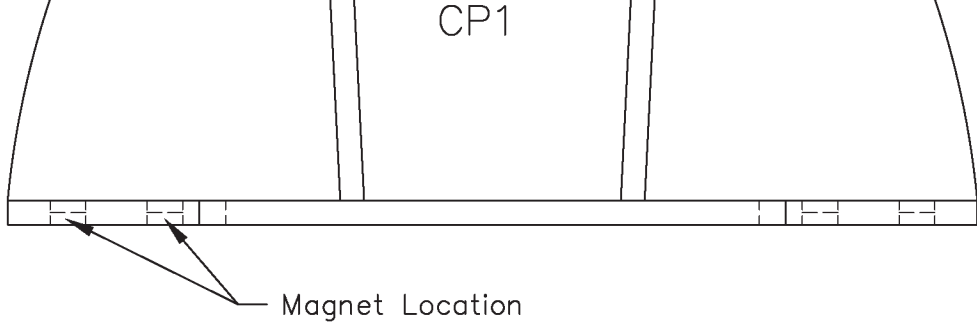
Outline is 2 Laminations
of 1/16 x 1/8 Balsa

1/8 Sq. Balsa
Shims 8 Places

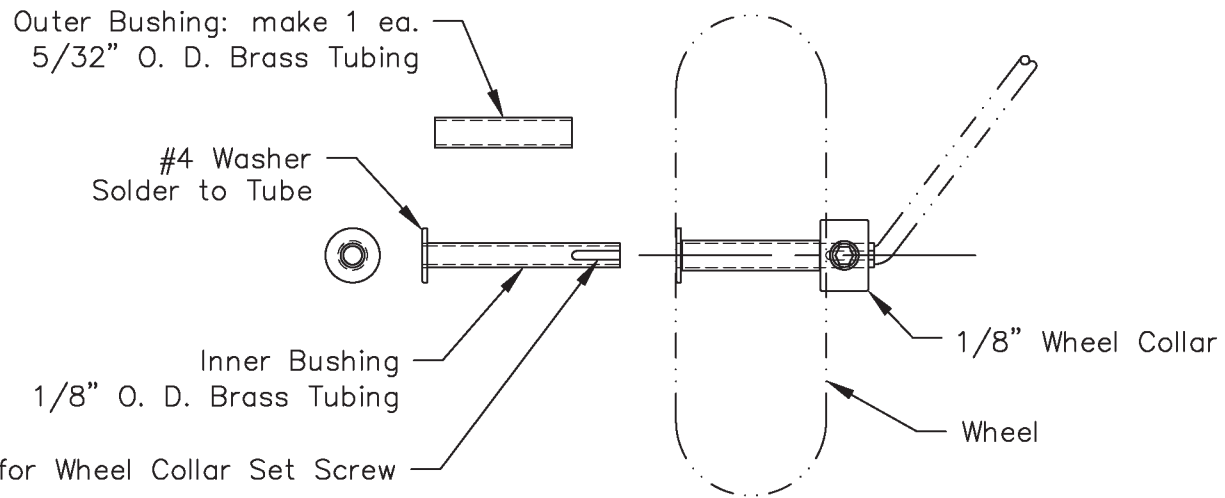
1/8 Sq. Balsa

Hinge
Loc.

Slot



Wheel Bushing Detail Drawing



Recommended Power & Guidance:

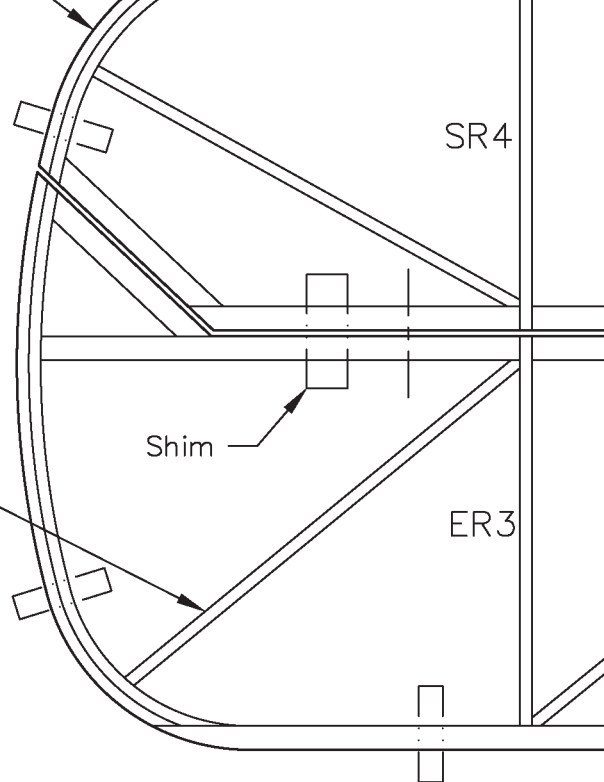
of 1/16 x 1/8 Balsa

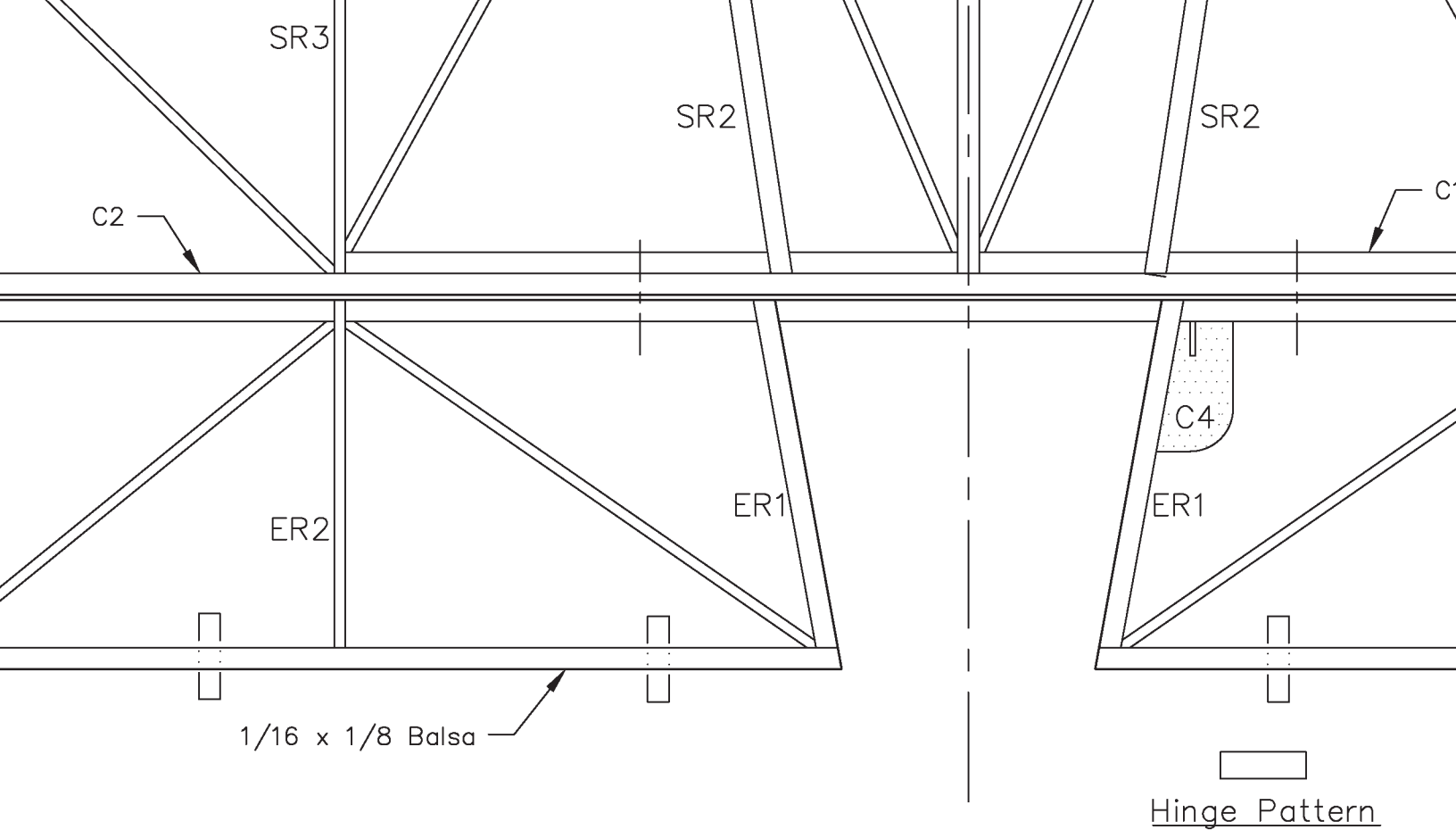
SR4

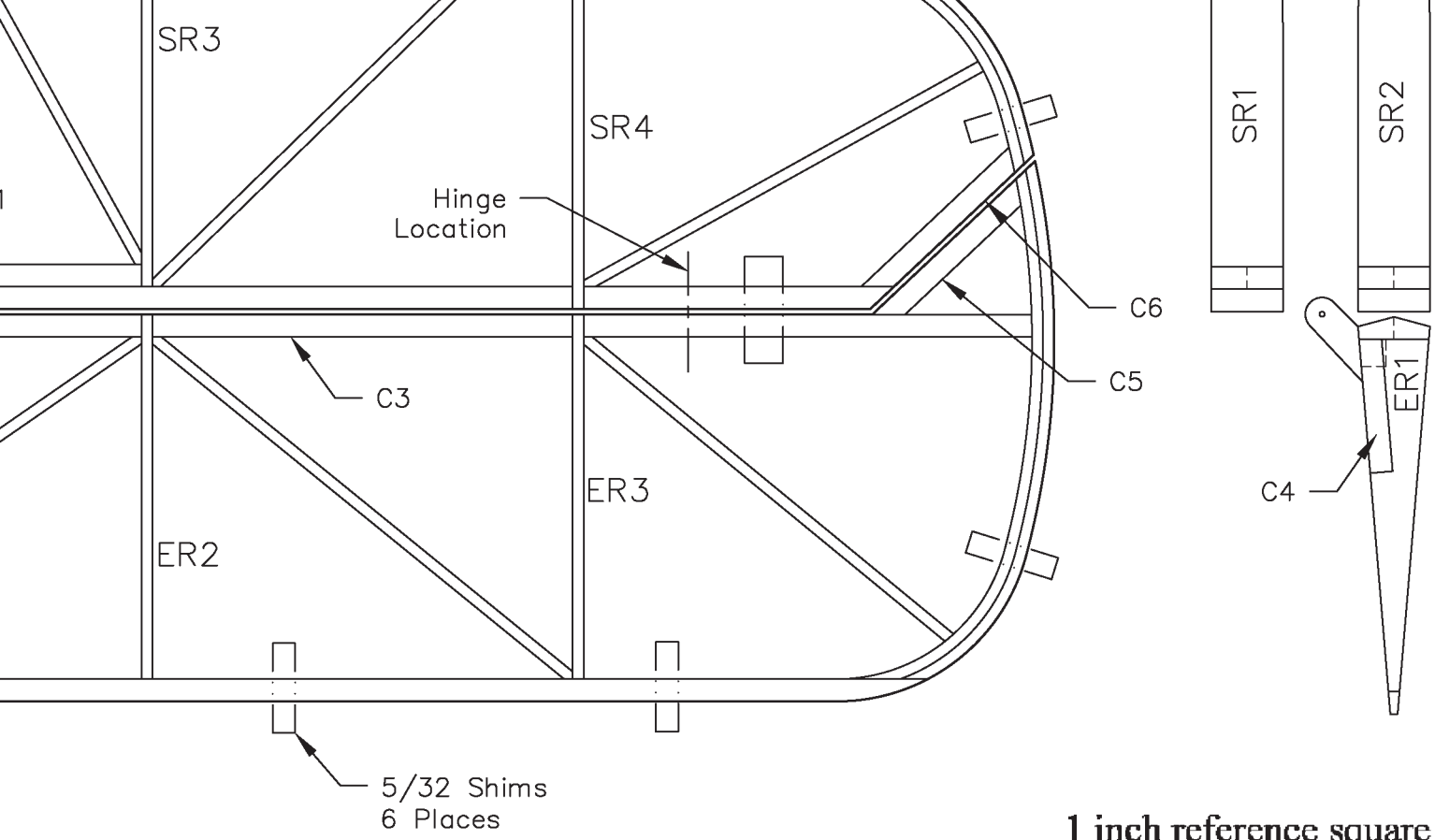
Shim

All Diagonal Bracing
is 1/16 Sq. Bass Wood
Glued in on Center

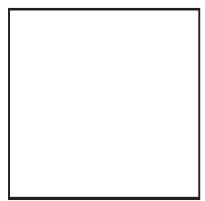
ER3

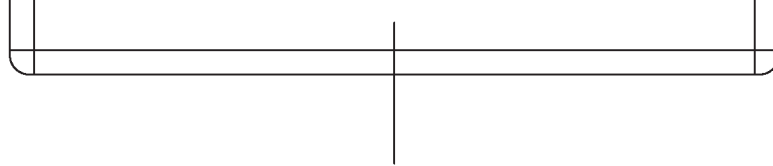
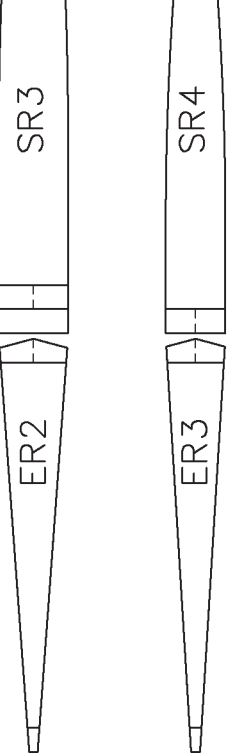






1 inch reference square





Hinge

All Diagonal Brac
is 1/16 Sq. Bass W
Glued in on Cen

1/8 Sq. Balsa
Glued In On Center

Copyright 2021

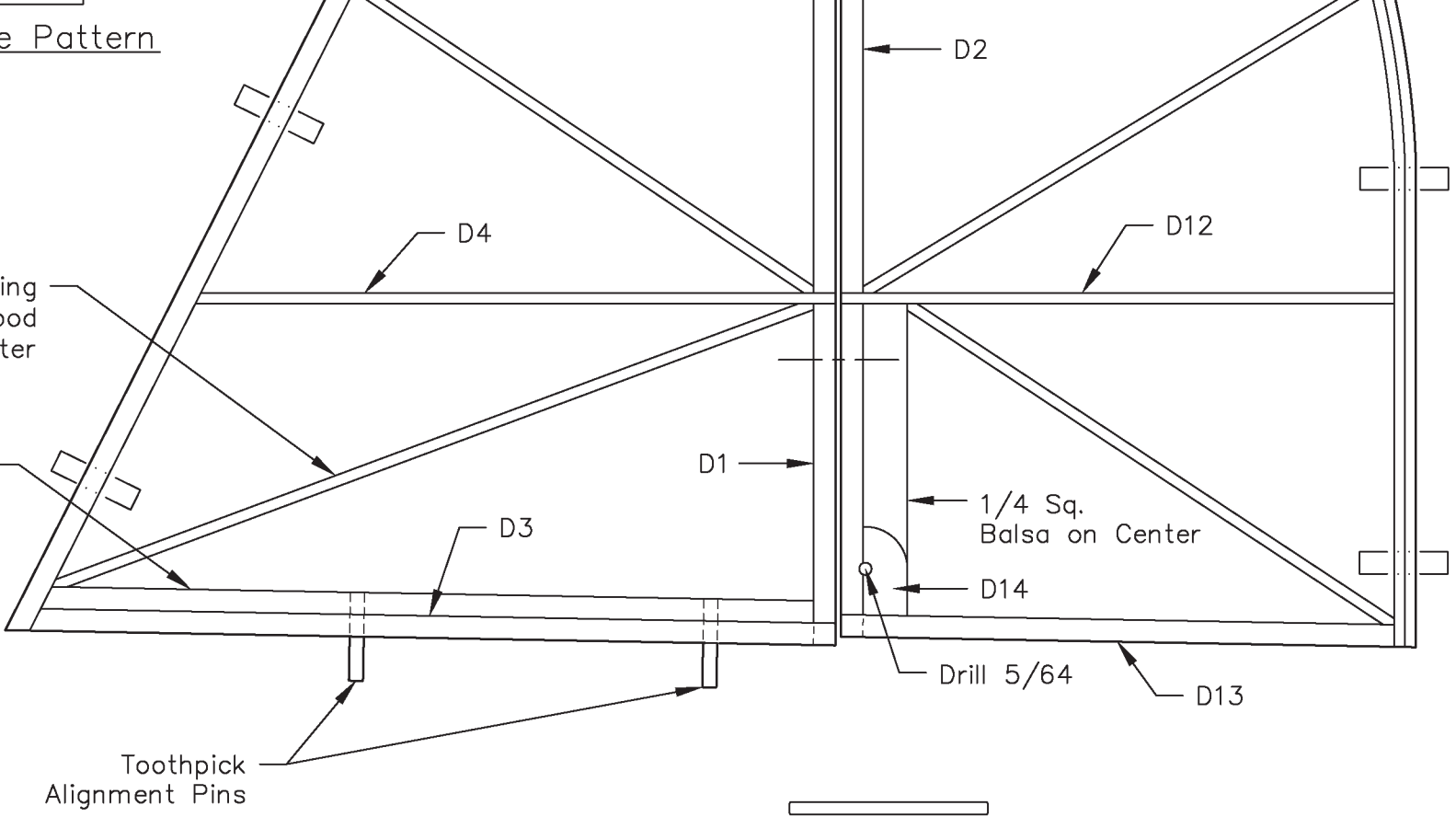


and **ModelAviation**
Bringing Modelers Together

**Copying for resale of this drawing without
the written approval or consent of AMA
is expressly prohibited.**

e Pattern

ing
ood
ter



Rudder Control Horn
Make from a Wood Tooth Pick

- 2- Suppo 2212/15 Outrunner Motor
- 2- 18A ESC
- 1- APC 8-6E Propeller (L. H. Side)
- 1- APC 8-6EP Propeller (R. H. Side)
- 1- 2000 mah 2S Lipoly Battery
- 2- 9 Gram Sub-Micro Servos (Rud Elev)
- 2- 6 Gram Sub-Micro Servos (Ail)
- 1 Full Range Rx

Plan No. 1125

Beech AT-10 Wichita

Span: 50" | Area 377 Sq. In.

Length: 36 1/2"

Flying Weight: 33 Oz.

Wing Ldg: 13.3 Oz./ Sq. Ft.

Designed by: Pat Tritle

Sheet 1 of 3 © 5/15/2020