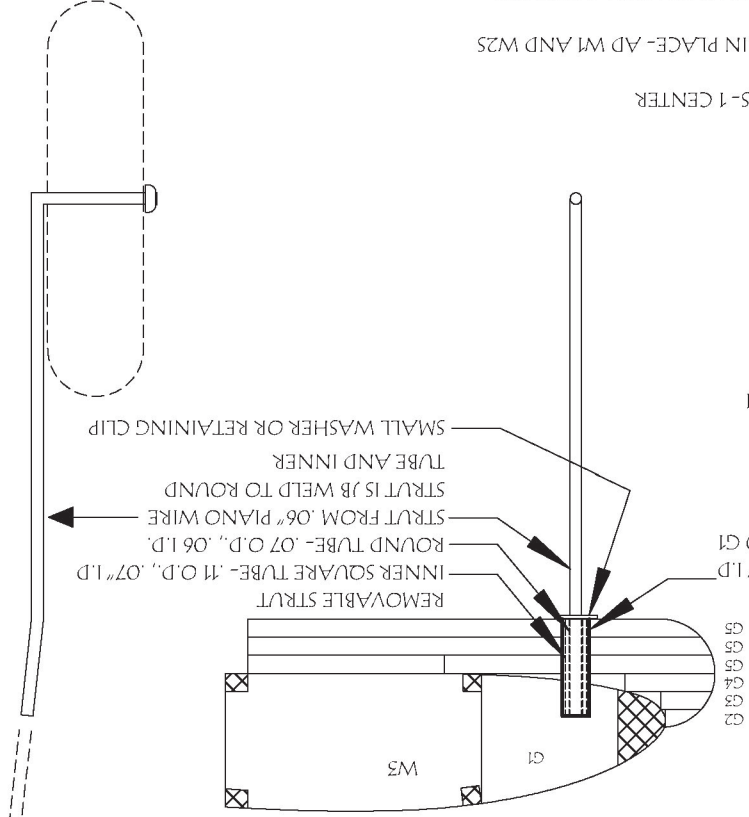


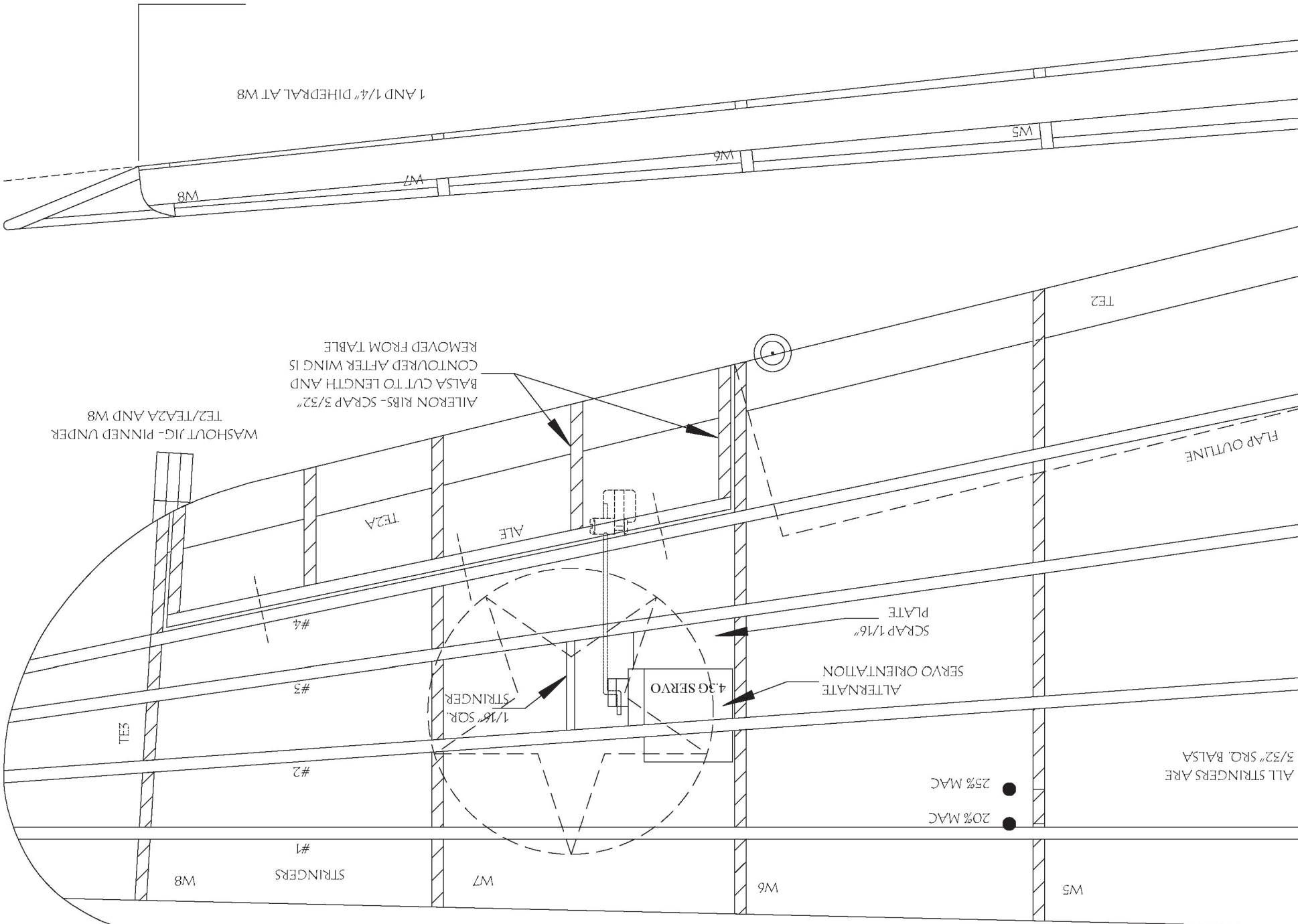
MAKE A LEFT AND RIGHT FROM .06 WIRE



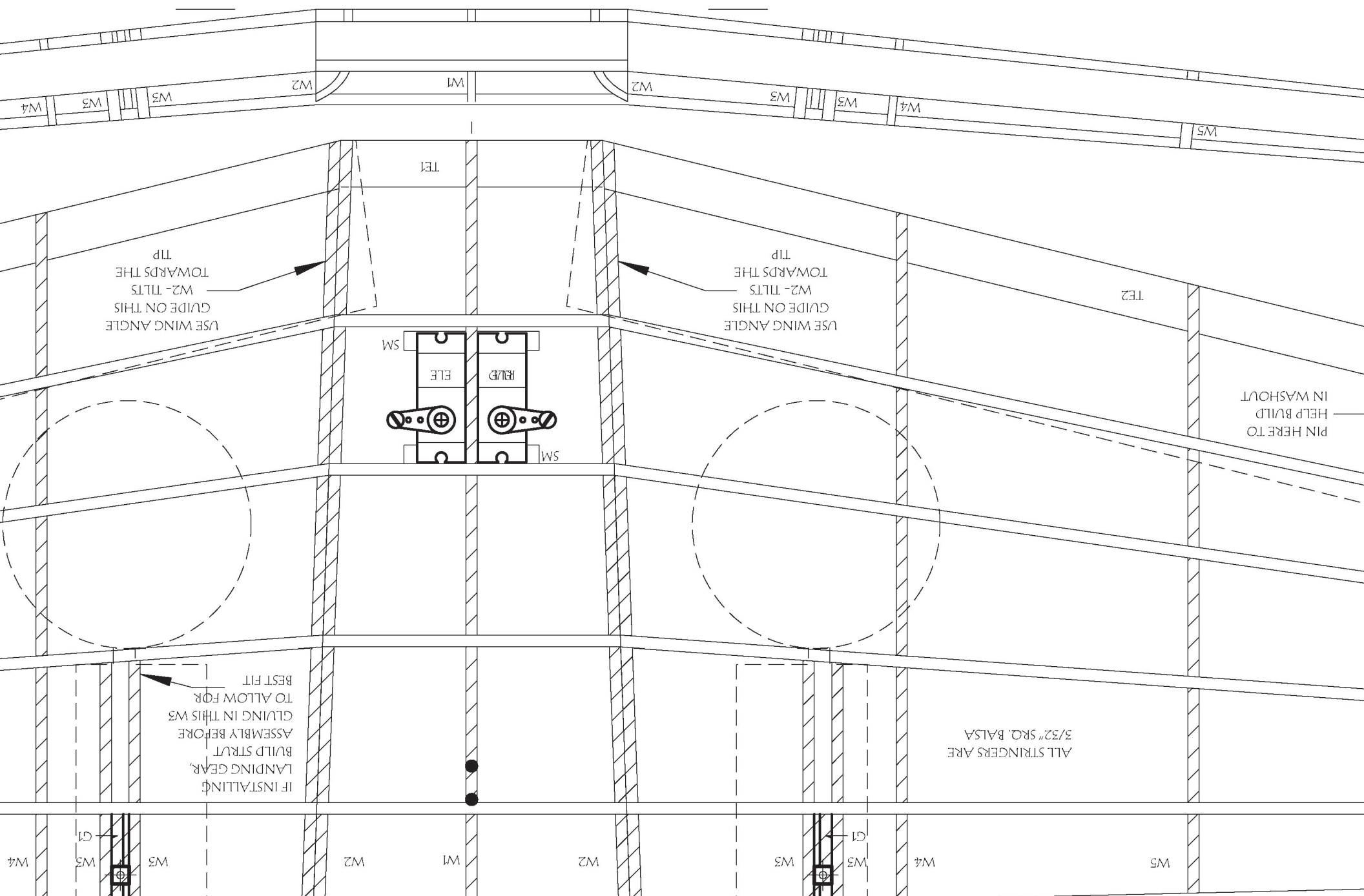
UT DETAIL- PART OF G1 OMITTED FOR CLARITY  
 O SCRAP 1/16\" Balsa- TRIM TO MATCH  
 N PLACE OVER W3  
 OT GLUE) OUTER BRASS TUBE (.14 O.D.) INTO SLOT ON G1  
 ASSEMBLY FLUSH WITH TUBE  
 ER W3 TO ASSEMBLY (G1 IN BETWEEN BOTH W35)  
 R BRASS TUB AFTER COVERING  
 CHING TO WING

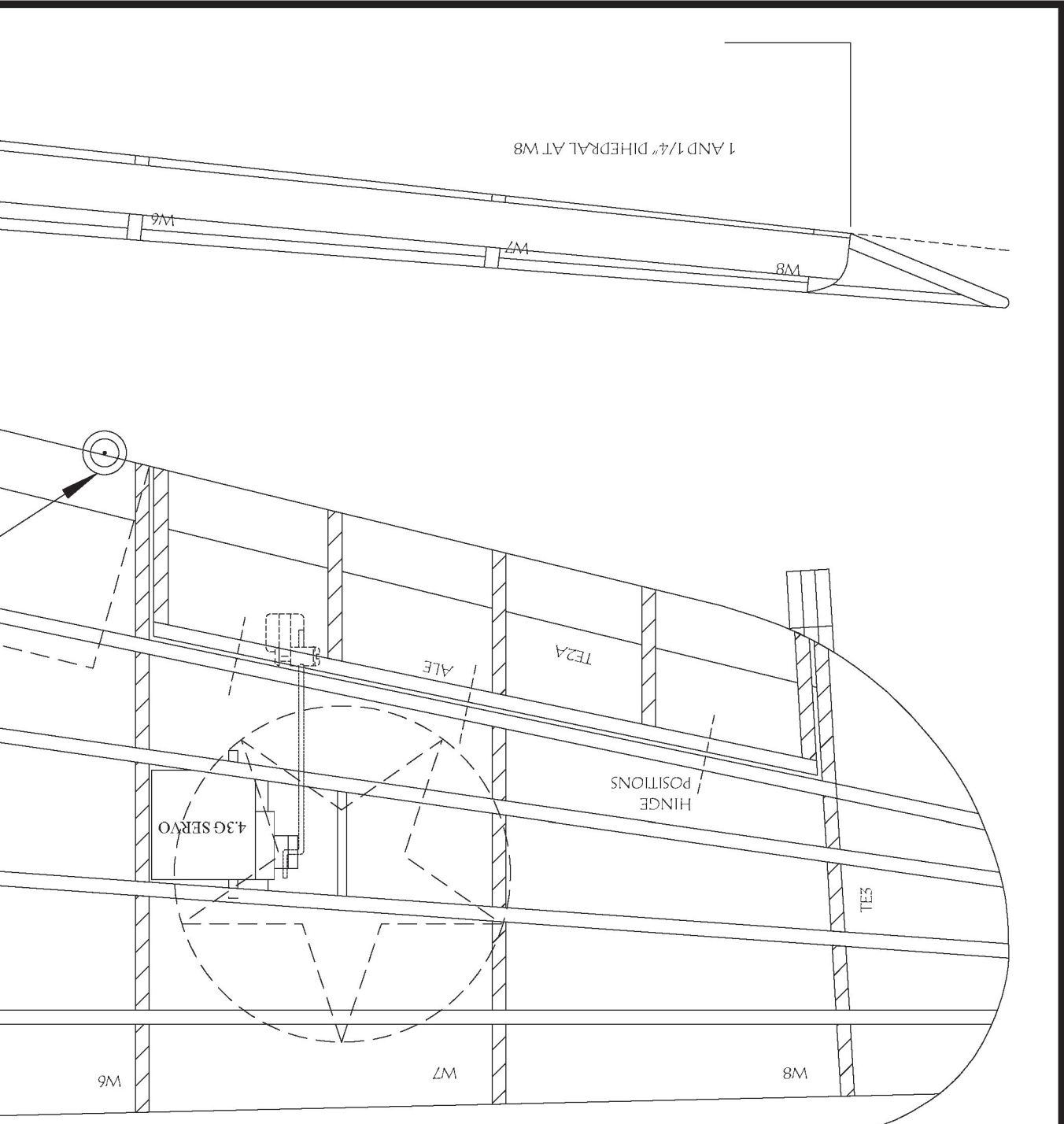
INSTRUCTION

ADDITIONAL SECTIONS:  
 LEADING EDGE FROM MEDIUM 1/4\" Balsa PER THE PLANS- 1 CENTER  
 WITH THE CENTER SECTION, PIN THE L.E. AND ADD TE1 IN PLACE- AD W1 AND W25  
 HE 3/32\" SCR. STRINGERS.  
 SM PARTS AND TEST FIT RUBBER/ ELEVATOR SERVOS- REMOVE WHEN COMPLETE.  
 Y REMOVE CENTER SECTION AND SET ASIDE.  
 AND TE4 TOGETHER, SET IN PLACE OVER THE LEFT WING PLANS. PIN THE LEFT WING  
 OVER THE PLANS. ELEVATE THE TE3/4 ASSEMBLY USING THE TIP ANGLE GUIDE AND THEN  
 E L.E. AND TE2.  
 2 ANGLE GUIDE TO ANGLE W2 TOWARDS THE TIP (FOR THE DIHERAL) AND GLUE IN PLACE.  
 TOM STRINGERS IN PLACE AND THEN SET W4 TO W8 AND ALE OVER THE PLANS. USE PINS  
 G BETWEEN #4 STRINGER AND THE ALE AS WELL AS W6A/W8A AND THEIR  
 B. GLUE IN PLACE WHEN SATISFIED.  
 "PLUG-IN" LANDING GEAR, SEE THE NOTES FOR THE W3 ASSEMBLY- GLUE IN PLACE. W3  
 CAN BE OMITTED IF NO LANDING GEAR ARE BEING USED.  
 Balsa SCRAP PER THE PLANS FOR THE ALERON SERVO MOUNT. SAND THE BOTTOM STRINGER  
 WITH SCRAP. MOVE THE SERVO SO THAT IT DOES NOT HIT THE TOP STINGERS-GLUE IN PLACE  
 THE TOP STRINGERS.  
 OTHER HALF OF THE WING. CONTOUR ALL PANEL L.E.S PER THE PLANS. PIN THE CENTER  
 PLACE OVER THE PLAN. ELEVATE THE OUTER WING PANELS 1.25\" AT W8. GLUE THE 3  
 ONS TOGETHER AT THE W25.  
 ALERONS FREE AND SHAPE THE ALERONS LEADING EDGE INFILL BETWEEN THE TOP/BOTTOM  
 S WITH SCRAP. HINGE THE ALERON WITH "CA" HINGES.

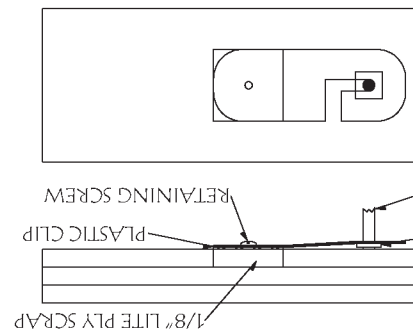
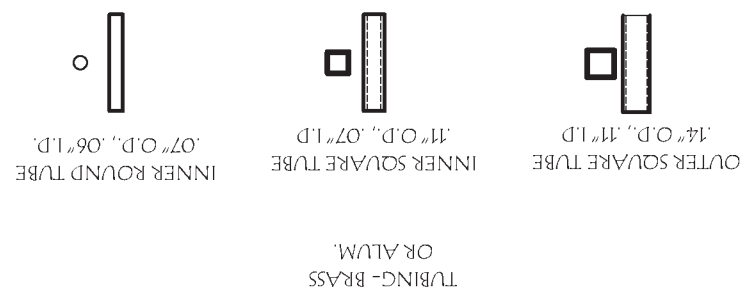


1. GLUE G1 TO PLUG-IN STR
2. GLUE G1 IN
3. FIT (DO NOT SAND G1)
4. SAND G1
5. GLUE OTH
6. INSERT W3
7. ADD OUTE
- AND ATTA
1. CUT THE LE AND 2 OUTE
2. STARTING
3. ADD BOTH
- TEMPORARI
4. GLUE TE3
- LE AND TE2
- GLUE TO THE
5. USE THE W
- PIN THE BOT
- FOR SPACIN
- APPLICABLE
6. IF ADDING
- ASSEMBLY CA
7. ADD 1/16"
- TO BE FLUSH
- AND ADD TH
8. BUILD THE
- SECTION IN I
- WING SECTIO
9. CUT THE A
- #4 STRINGER



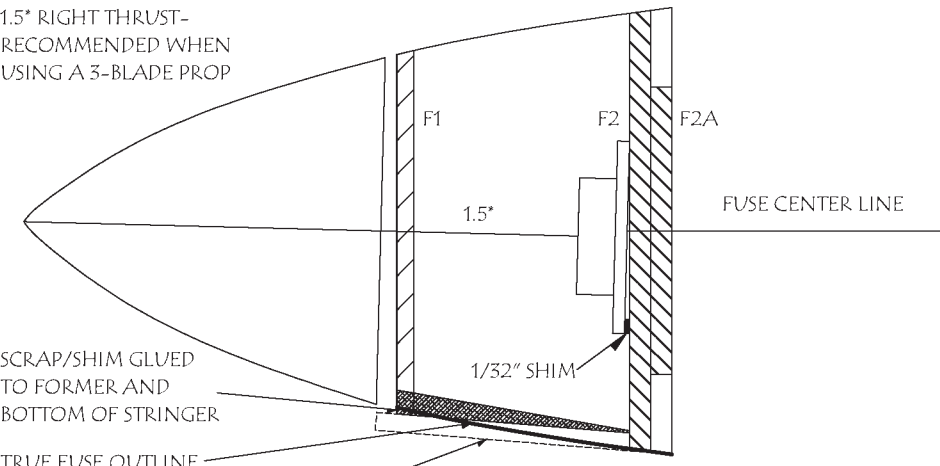


GREY IS FULL STRUT LENGTH- DASHED TO  
AID IN MAKING CORRECT ANGLE-



PLANS CAN BE CUT ALONG THIS LINE  
PLANS CAN BE CUT ALONG THIS LINE

TOP VIEW SHOWING  
1.5° RIGHT THRUST-  
RECOMMENDED WHEN  
USING A 3-BLADE PROP



SCRAP/SHIM GLUED  
TO FORMER AND  
BOTTOM OF STRINGER

TRUE FUSE OUTLINE

STRINGER IN NATURAL  
POSITION- SANDED TO  
FUSE CONTOUR LATER

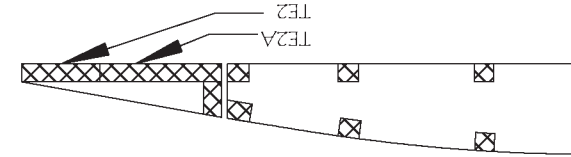
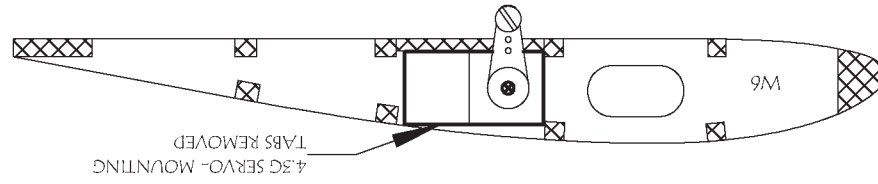
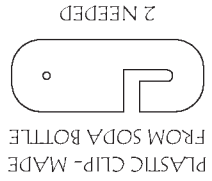
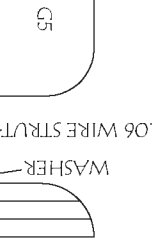
24 GRAM 1700  
BRUSHLESS MO

DARK LINE  
REPRE  
CHI

DO NOT ADD TOP 2 STRINGERS

1/4" Balsa sheet leading edge - root is (roughly) 1/2" high and tip is 5/32"

EDGE - DASHED LINE IS CUT AWAY ONCE WING IS UNPINNED FROM BOARD

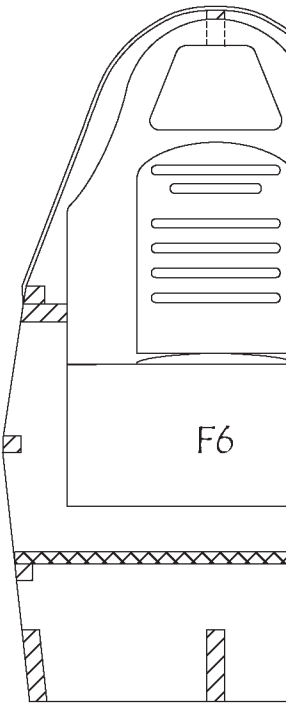
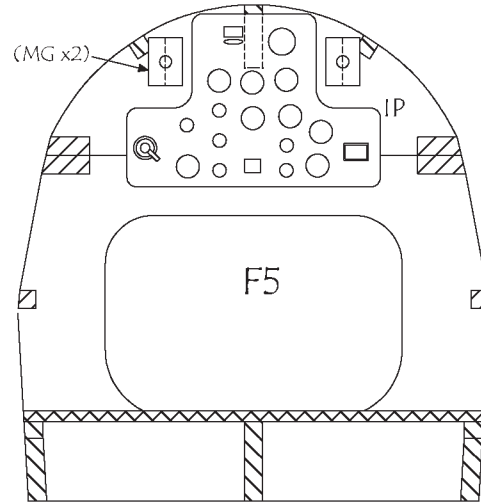
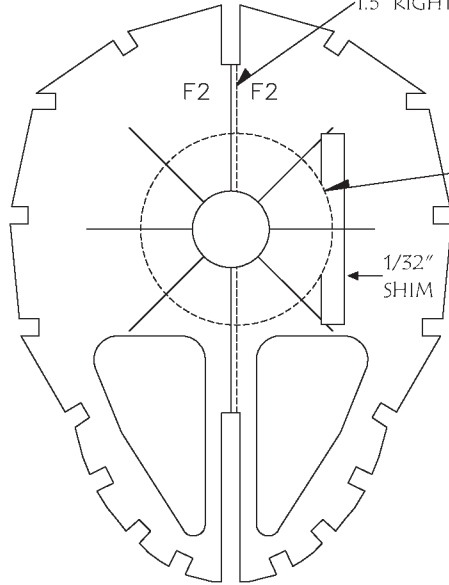
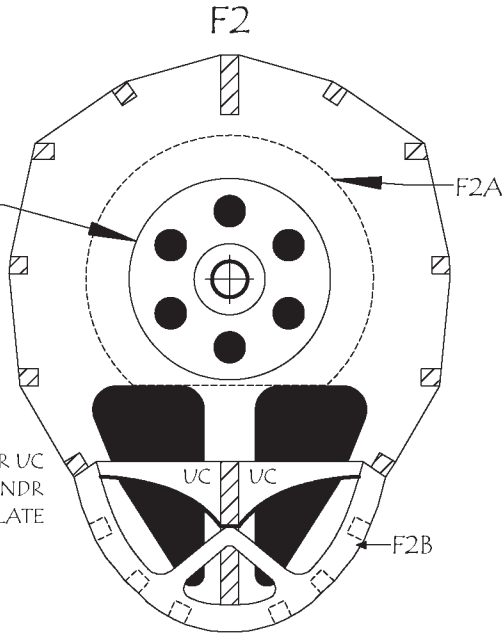


### 3 BLADE PROP OPTION

CENTERLINE WITH 1.5" RIGHT THRUST

RADIAL MOTOR-MOUNT OUTLINE

1/32" SHIM



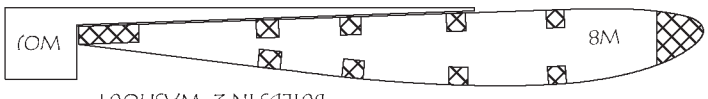
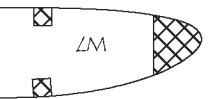
ALL WOOD IS 3/32" Balsa UNLESS NOTED

CANOPY - SEE TEMPLATES

UNTIL BOTH

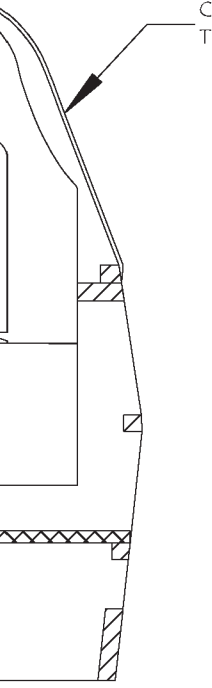
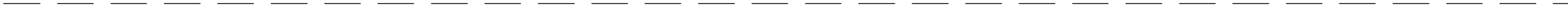
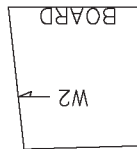


G2-G5 PARTS

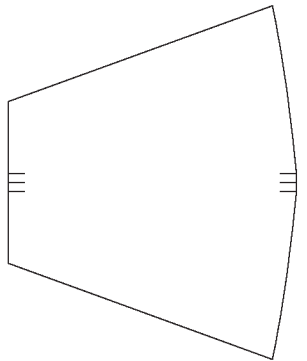


W8 AND W9 DETAIL  
BUILDS IN 2" WASHOUT

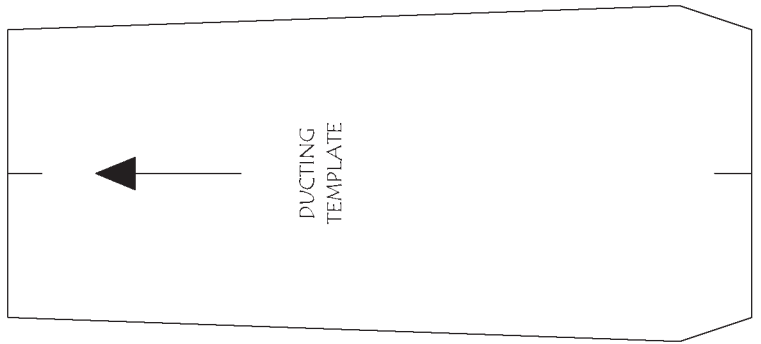
RIB DETAILS



CANOPY  
TEMPLATE

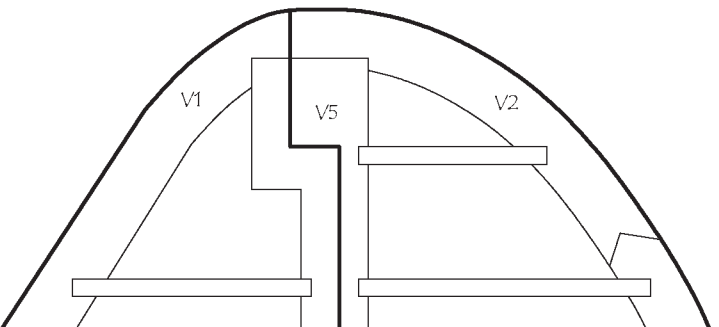


UNDER CHIN TEMPLATE  
LIGHT CARDSTOCK



DUCTING  
TEMPLATE

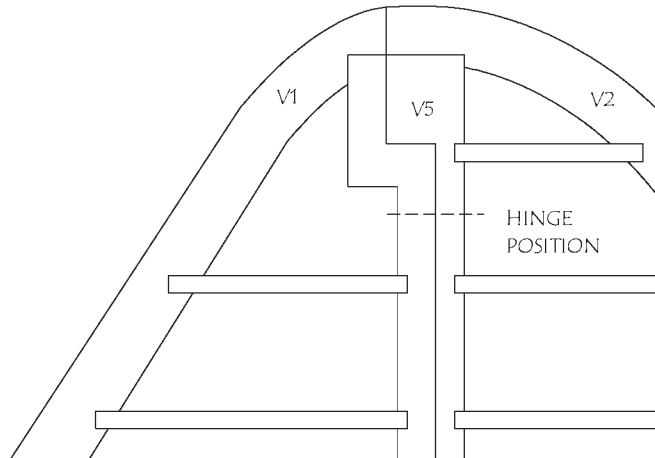
ALL "V" PARTS 3/32" Balsa



V1

V5

V2



V1

V5

V2

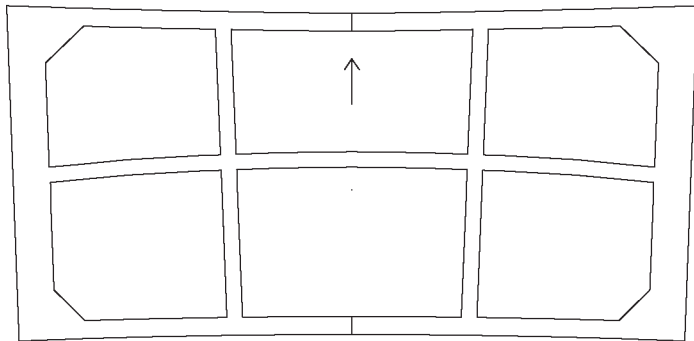
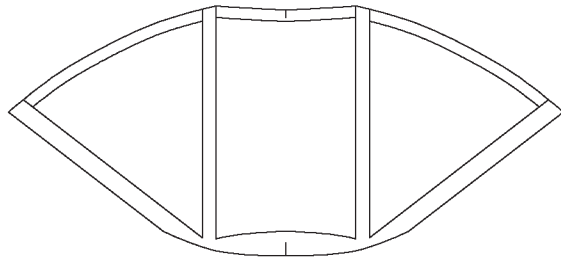
HINGE  
POSITION

WING ANGLE GUIDE

→ BOTTOM REAR FILLET

MAKE WING FILLETS  
FROM LIGHT CARDSTOCK  
2 OF EACH NEEDED

→ MAIN FILLET

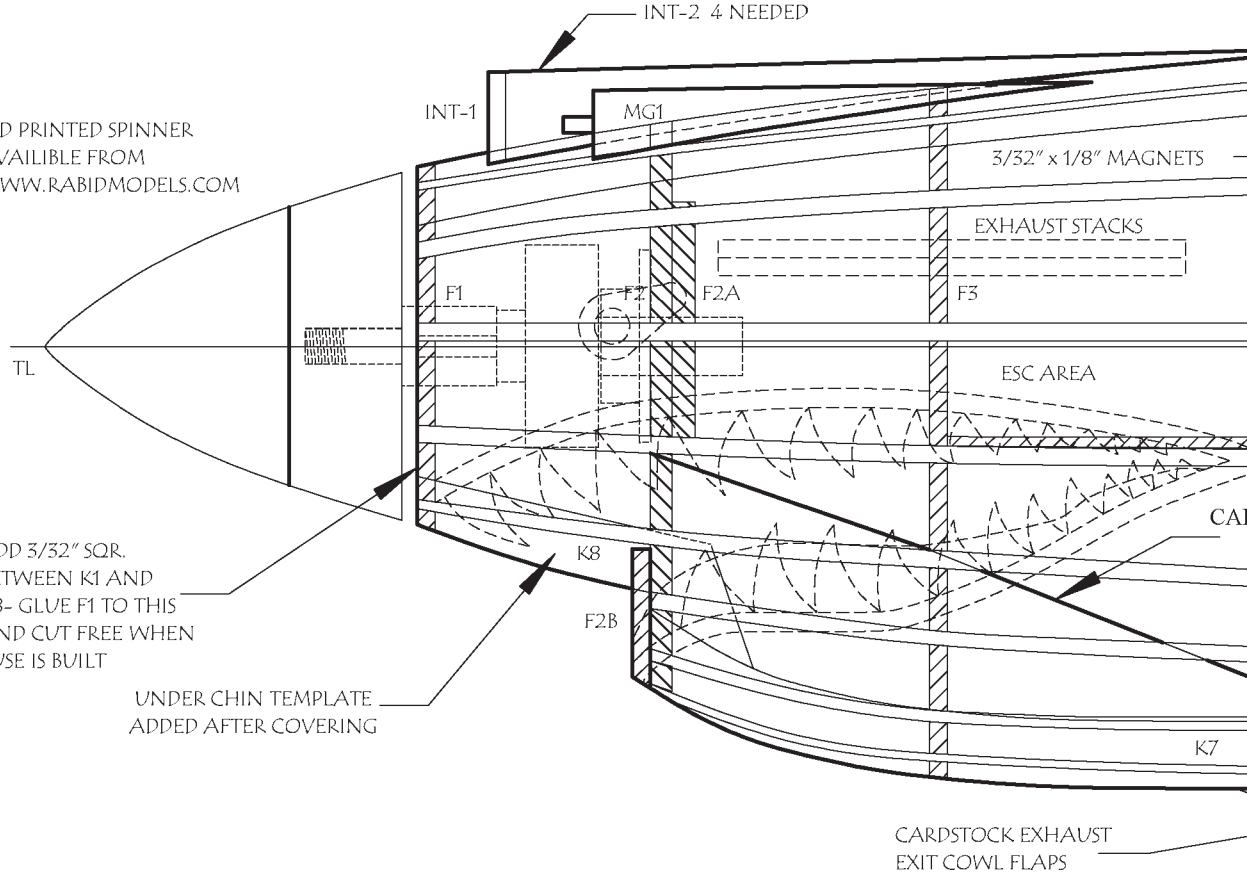


REAR CANOPY



HALVES ARE GLUED TOGETHER  
RAILS ARE IN PLACE

3-D PRINTED SPINNER  
AVAILABLE FROM  
WWW.RABIDMODELS.COM



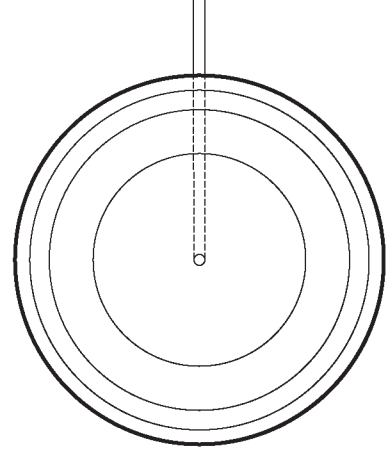
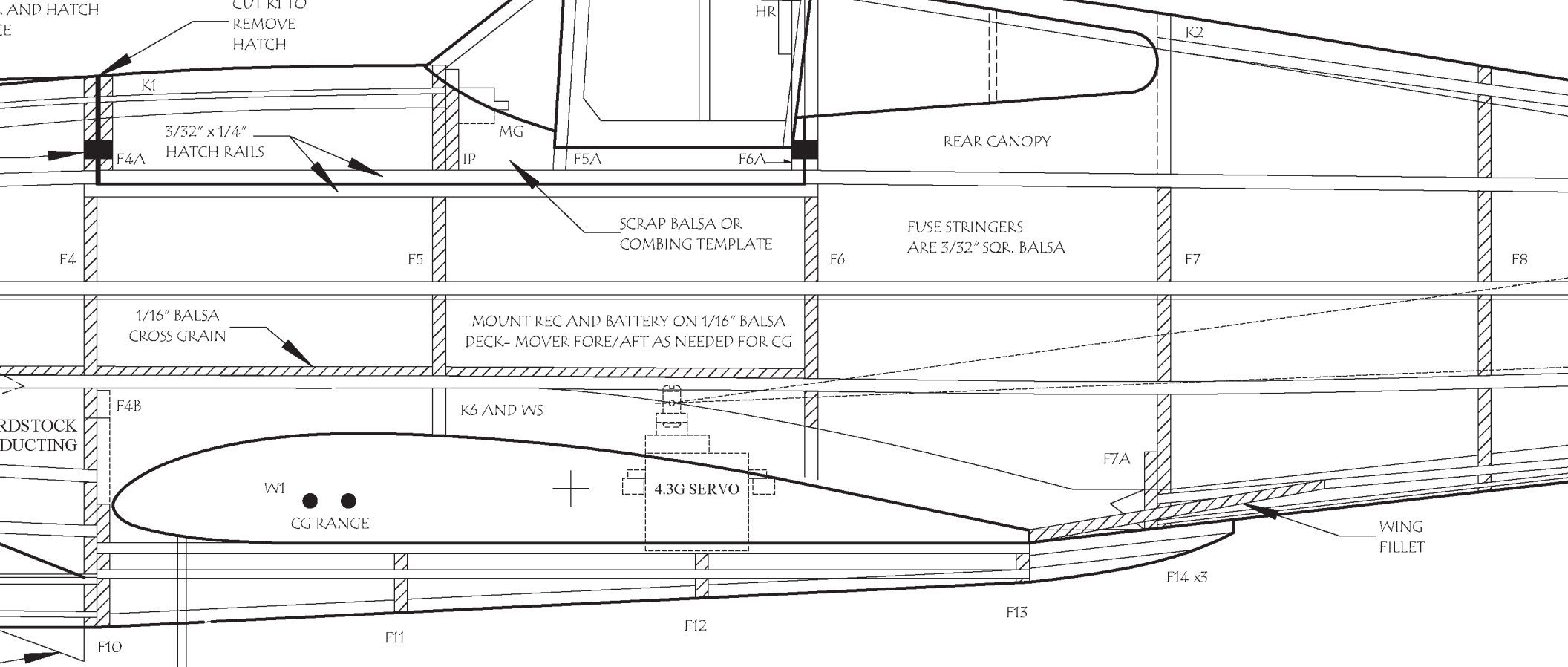
ADD 3/32" SQR.  
BETWEEN K1 AND  
K8- GLUE F1 TO THIS  
AND CUT FREE WHEN  
FUSE IS BUILT

UNDER CHIN TEMPLATE  
ADDED AFTER COVERING

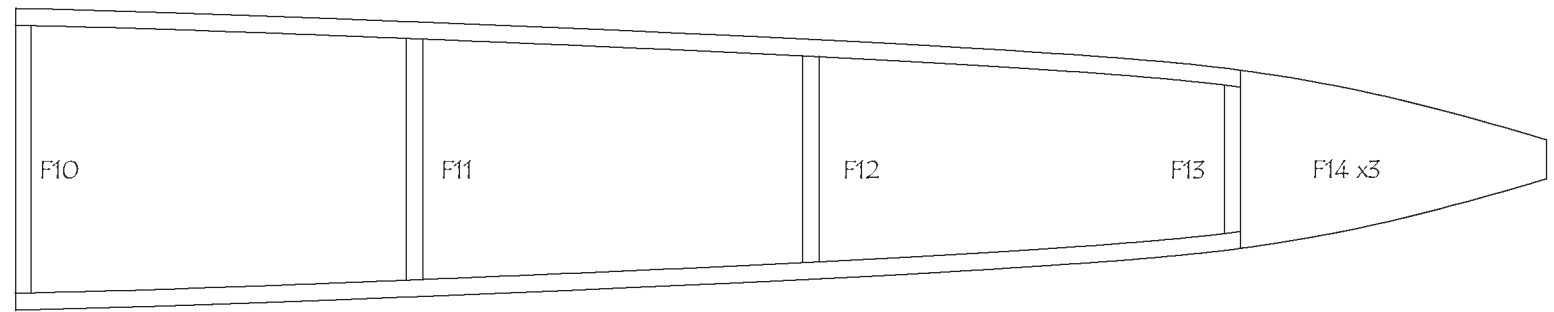
CARDSTOCK EXHAUST  
EXIT COWL FLAPS

### FUSE CONSTRUCTION

1. PIN AND GLUE K1-K8 OVER THE PLANS. ADD SCRAP ON K4 PER THE PLANS AND 3/32" SQR. BETWEEN K1 AND K8. ADD V1, V6, AND THE FORWARD HALF V5 IN PLACE
2. GLUE F1 THROUGH F9 IN PLACE- ADD F4B AND F7B TO THE APPROPRIATE FORMER
3. ADD THE 3/32" STRINGERS EXCEPT THE TOP 2 FORWARD OF THE CANOPY. THE BOTTOM 3 COWL STRINGERS NEED TO BE CURVED TO MATCH THE BOTTOM OF THE COWL.
4. ADD THE WING SADDLE AND THE BOTTOM HATCH RAIL (3/32" x 1/4")
5. REMOVE FROM THE BOAD AND BUILD THE OTHER HALF OF THE FUSE
6. USE TAPE ON THE BACK OF F4, TOP OF LOWER HATCH RAIL, AND THE FRONT OF F6 TO ENSURE THE UPPER HATCH RAIL, F4A, AND F6A ARE NOT GLUED TO THE FUSE. SLIDE THE UPPER HATCH RAIL, F4A, AND F6A IN PLACE AND GLUE- ADD F5A PER THE PLANS. REMOVE THE TAPE AND BLEND THE HATCH RAIL TO MATCH THE FUSE CONTOUR.
7. ADD THE TOP 2 STRINGERS BEFORE CUTTING THE HATCH FREE AND ADD THE MAGNETS- MAKE SURE THE POLARITY IS CORRECT.

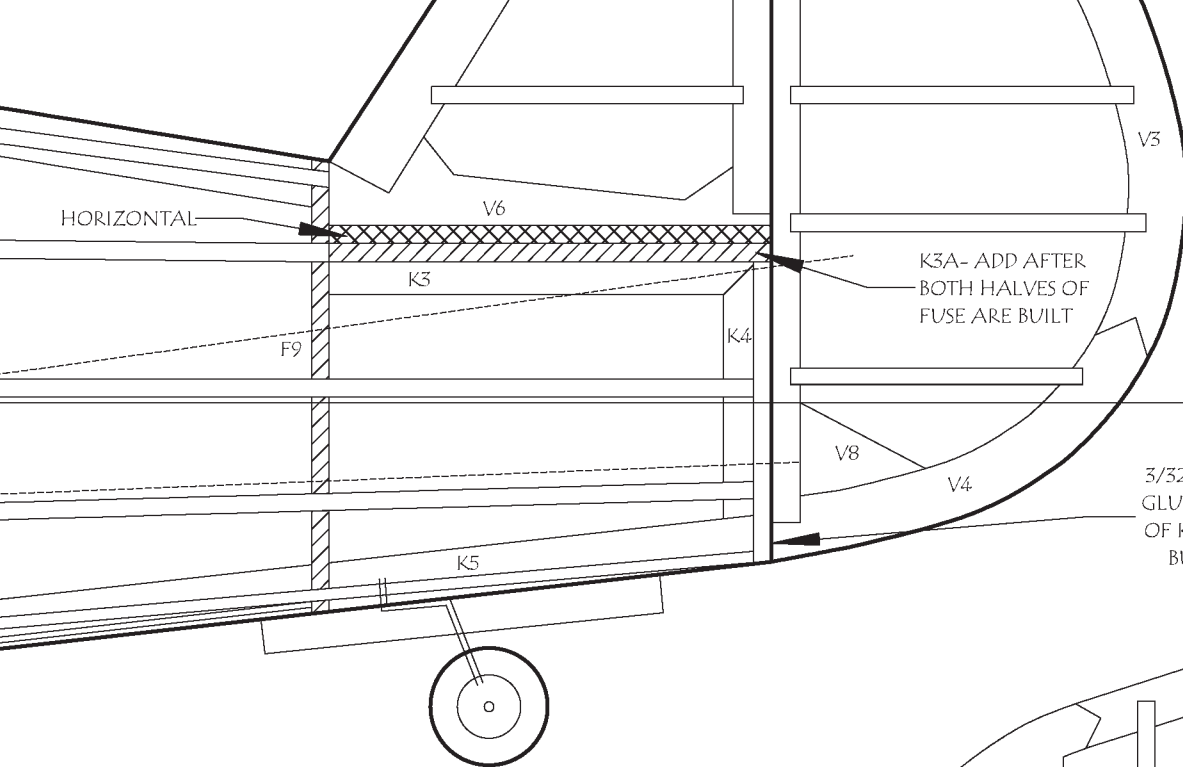


1.75-2" WHEELS

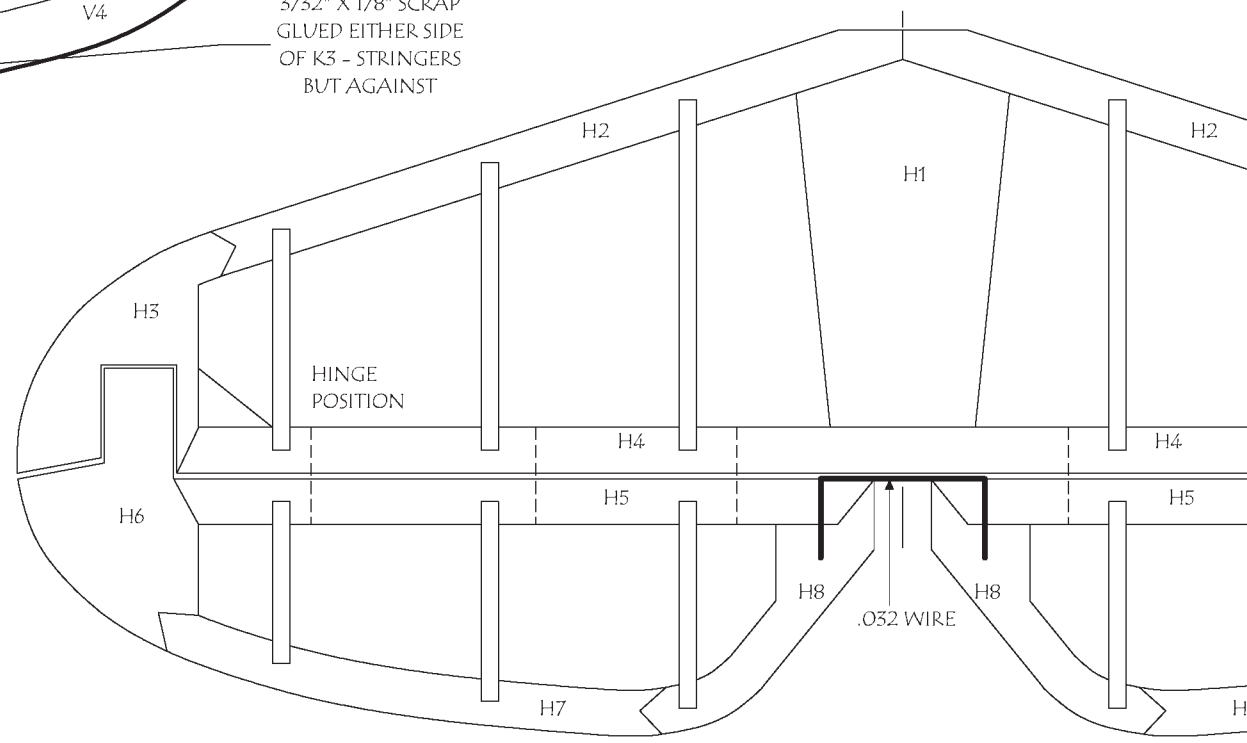
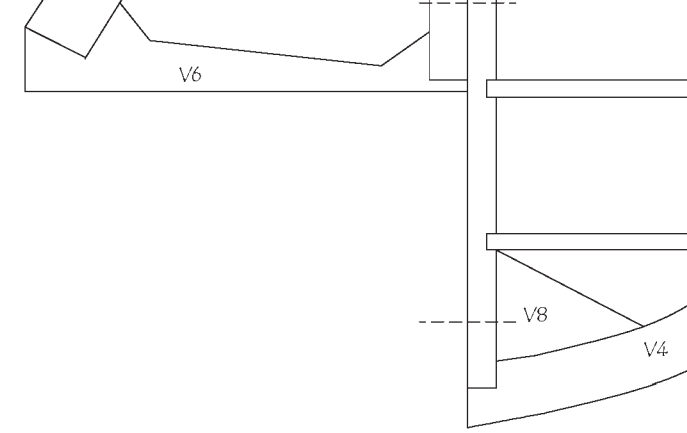


BELLY PAN DETAIL- BUILD IN PLACE AFTER MODEL IS COVERED AND WING ATTACHED

RE  
AL  
ELI  
RU  
  
ELI  
4-  
18-  
10-  
25-  
3-1  
  
SH  
WY



3/32" X 1/8" SCRAP  
GLUED EITHER SIDE  
OF K3 - STRINGERS  
BUT AGAINST



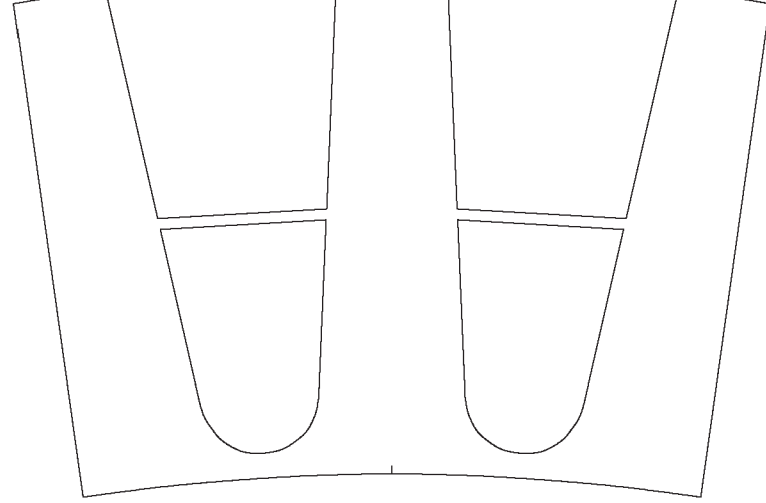
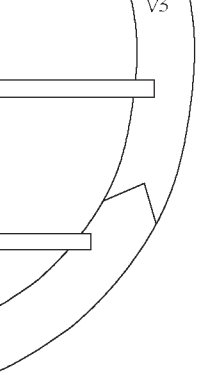
ALL "H" PARTS 3/32" Balsa

RECOMMENDED SET UP  
E +/- 3/8"  
E +/- 1/2"  
D +/- 3/4"

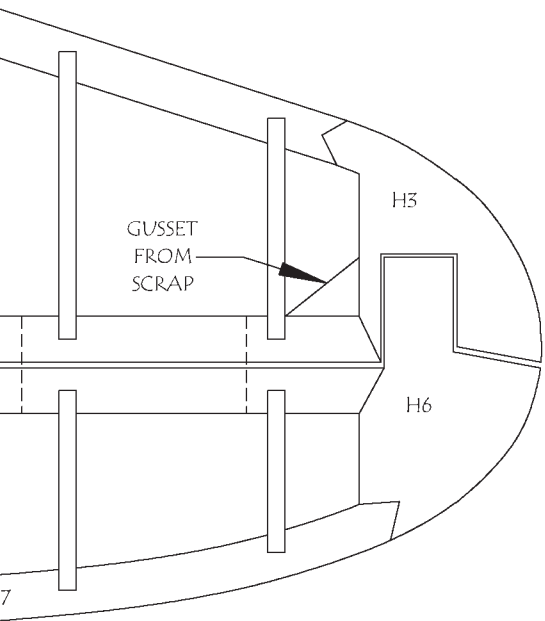
ELECTRONICS  
4.3G SERVOS  
.24G 1700KV MOTOR  
12 AMP ESC  
450 MAH LIPO PACK  
8x4.5 PROP

PORT KIT AVAILABLE FROM:  
WWW.MANZANOLASER.COM

Copyright 2022  and **ModelAviation**  
**Copying for resale of this drawing without  
 the written approval or consent of AMA  
 is expressly prohibited.**



CANOPY TEMPLATES- LIGHT CARDSTOCK AND 3 MIL CLEAR PLASTIC



### P-40c TOMAHAWK

DESIGNED BY DEREK MICKO-  
BASED OFF OF 18" COMET PLANS

27.5" WINGSPAN

6-9 OUNCES

CHANNELS: 4

MOTOR: 18-24 GRAM

ALL RIGHTS RESERVED

### Plan No.1130

