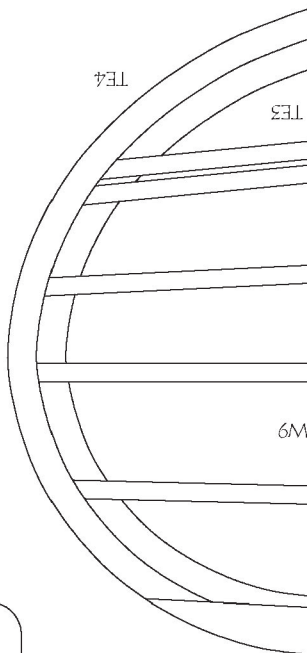
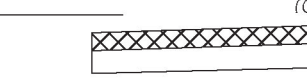


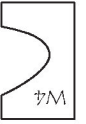
PER ROUND TUBE
2" O.D., 1/16" I.D.



LEADING
EDGE
TEMPLATES



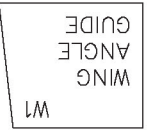
W8



W4

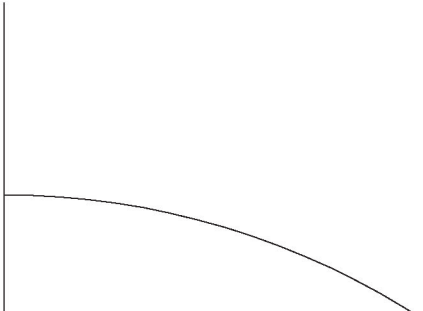
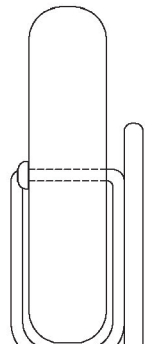


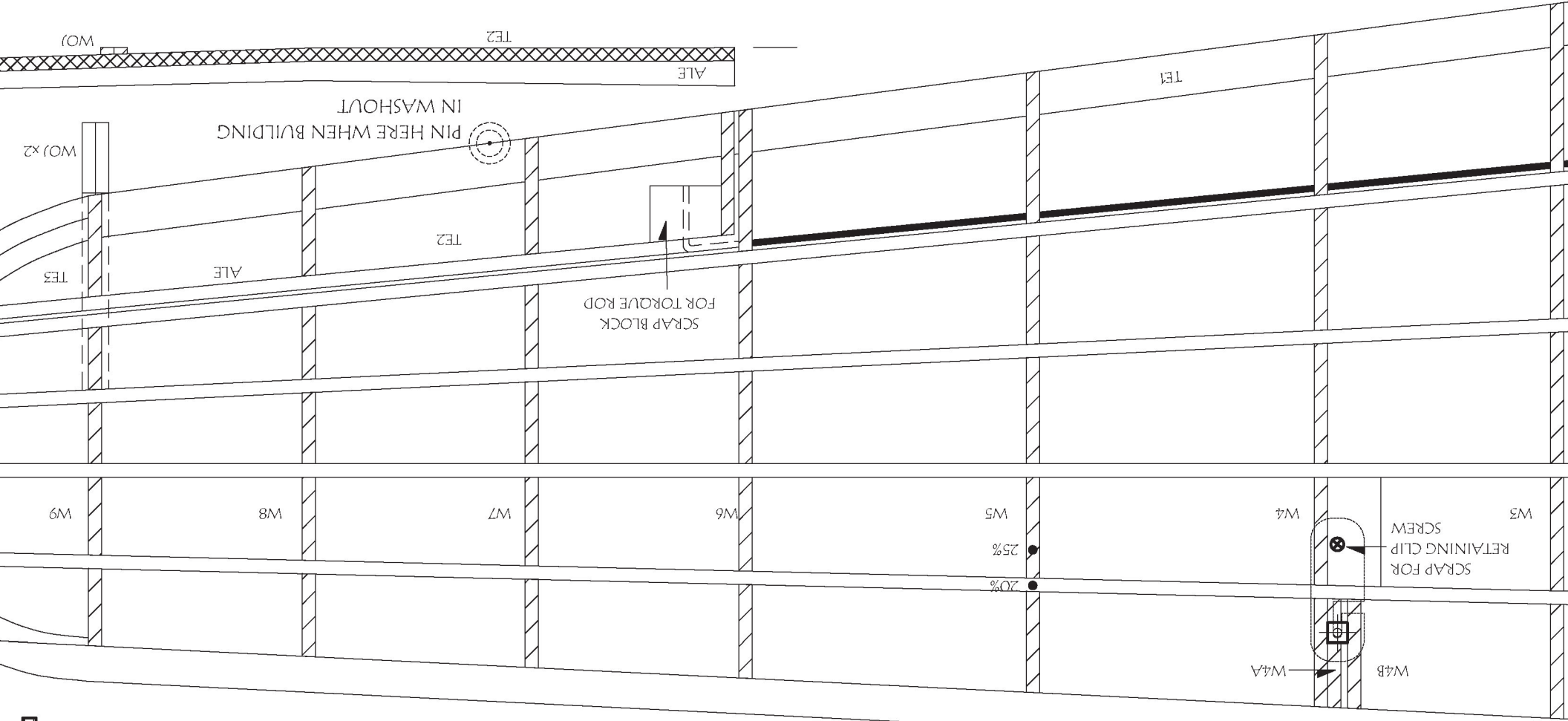
W1



W1

WING
ANGLE
GUIDE





1/16" O.D. BRASS TUBE - BENT AND TOP FLATTENED. 1/32" HOLE DRILLED FOR CONTROL ROD FROM SERVO - SEE FUSE SIDE VIEW FOR ANGLE

4. SAND W4A ASSEMBLY FLUSH WITH TUBE INTO SLOT ON W4A
5. GLUE W4B TO ASSEMBLY
6. INSERT W4 ASSEMBLY IN PLACE PER THE PLAN
7. ADD OUTER BRASS TUB AFTER COVERING AND ATTACHING TO WING

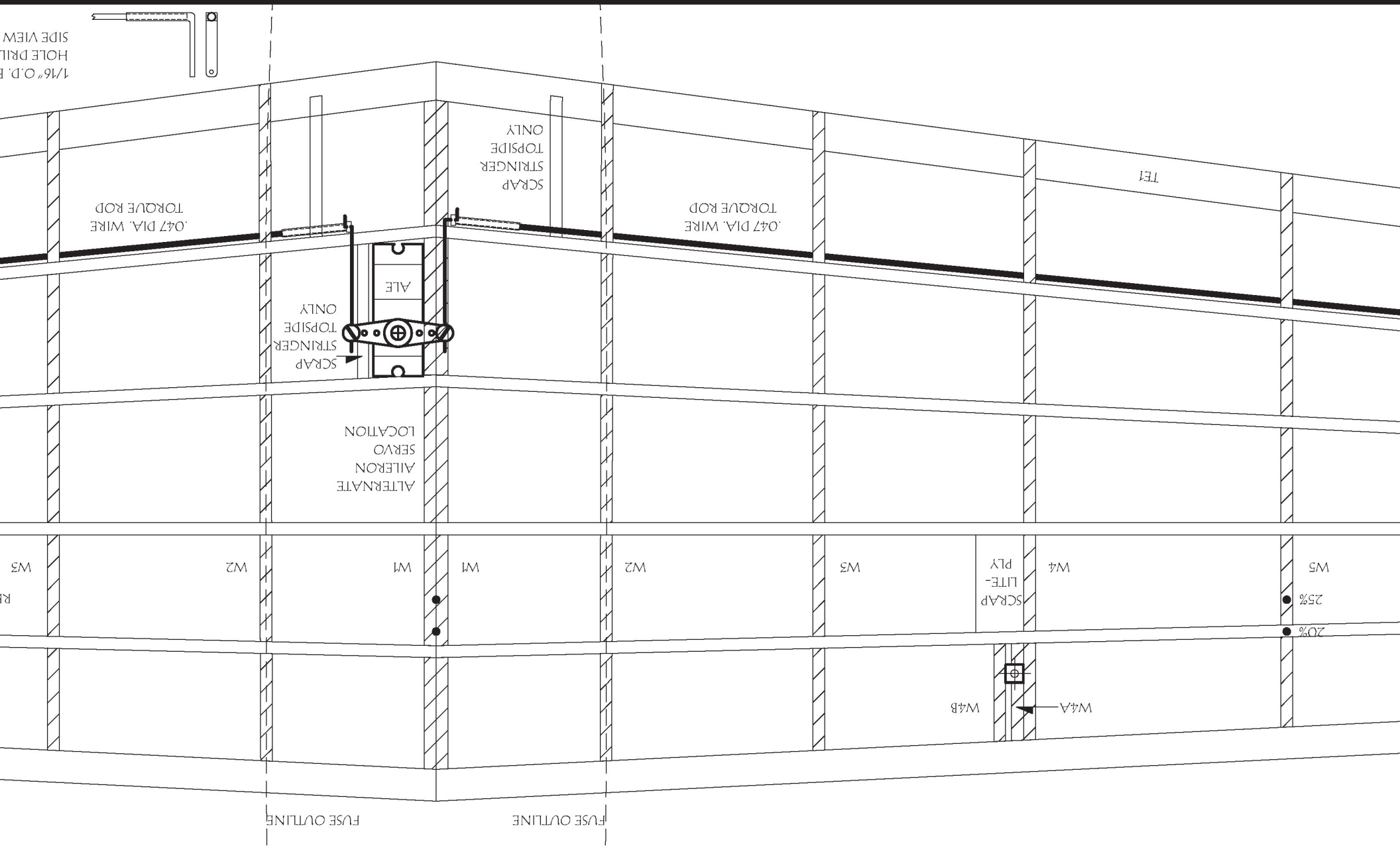
1/4" Balsa LEADING EDGE - CUT TO HEIGHT - SEE TEMPLATE

SMALL WASHER OR RETAINING CLIP

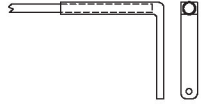
6" PIANO WIRE

TUBE AND INNER

TEMPLATE FOR LEADING EDGE- DASHED LINE IS CUT AWAY ONCE WING IS UNPINNED FROM BOARD



1/16" O.D. HOLE DRILL SIDE VIEW



0.07 DIA. WIRE TORQUE ROD

SCRAP TOPSIDE STRINGER ONLY

0.07 DIA. WIRE TORQUE ROD

SCRAP TOPSIDE STRINGER ONLY

ALTERNATE ALIERON SERVO LOCATION

TEI

W3

W2

W1

W1

W2

W3

SCRAP LITE-PLY

W4

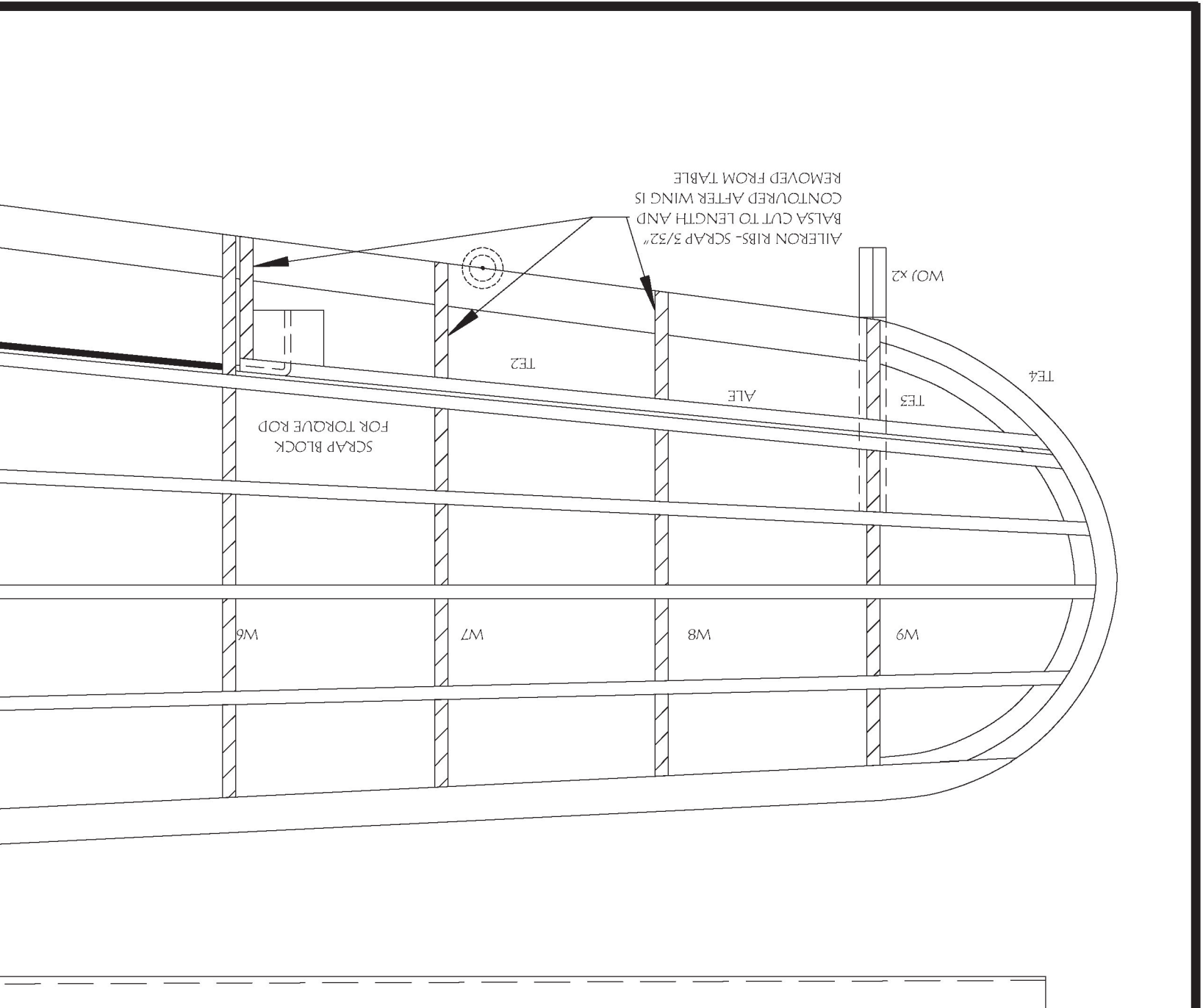
W5
25%
20%

W4B

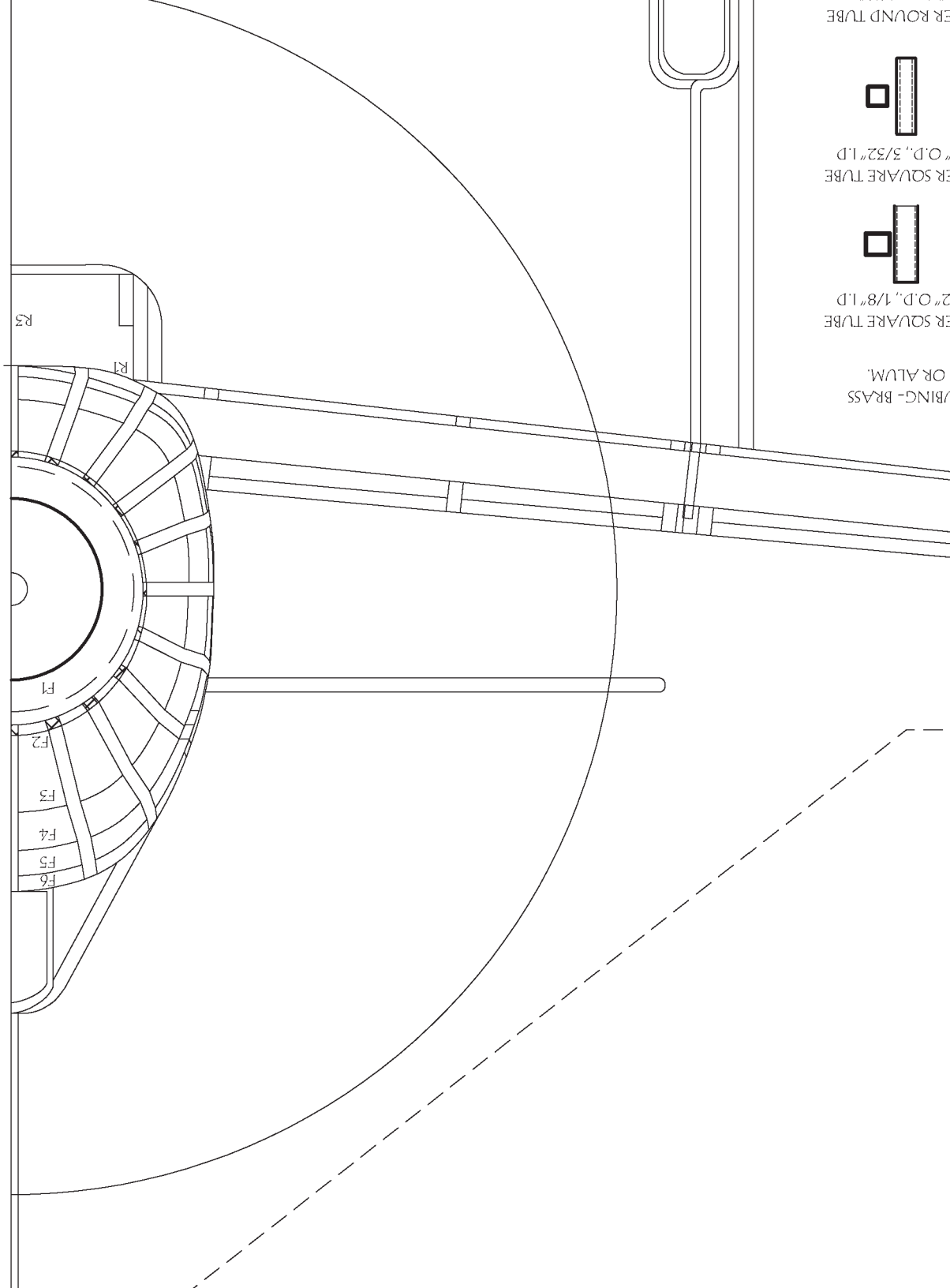
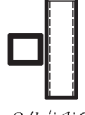
W4A

FUSE OUTLINE

FUSE OUTLINE

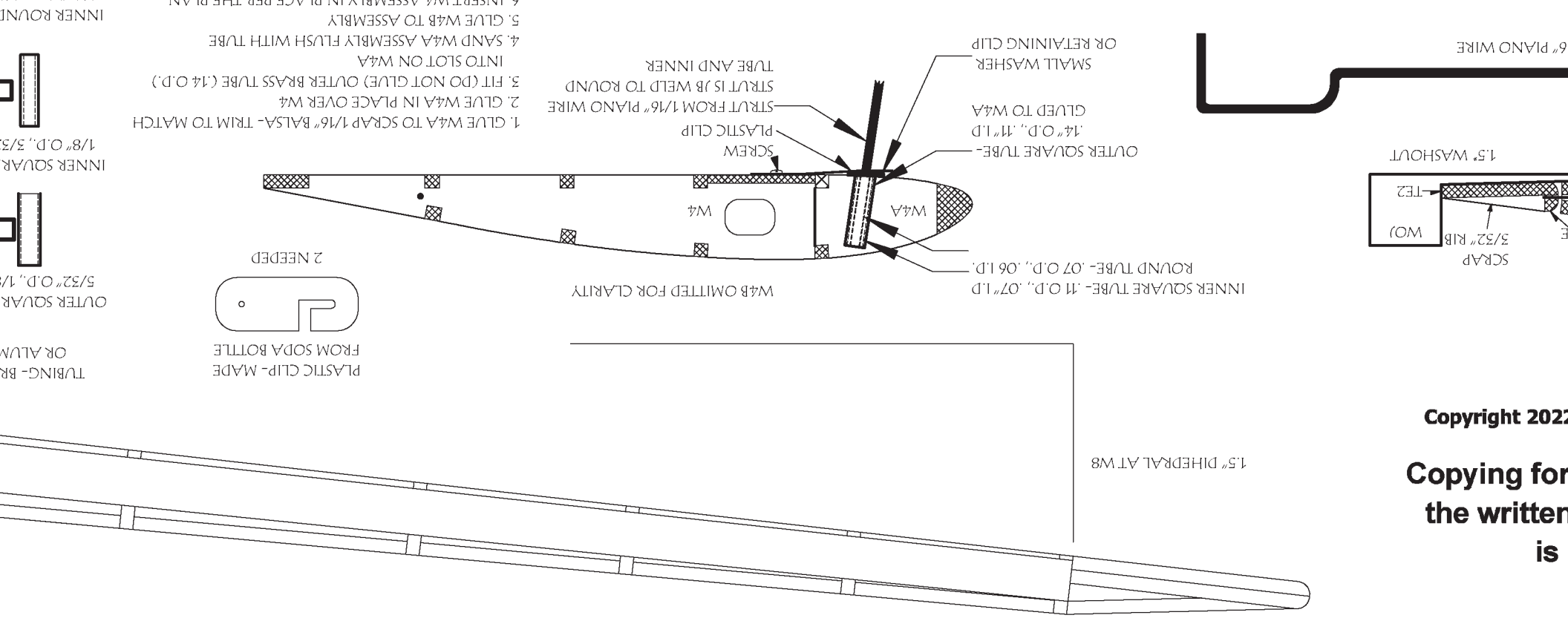


BRASS - BRASS
OR ALUM.
SQUARE TUBE
2" O.D., 1/8" I.D.
SQUARE TUBE
" O.D., 3/32" I.D.
ROUND TUBE

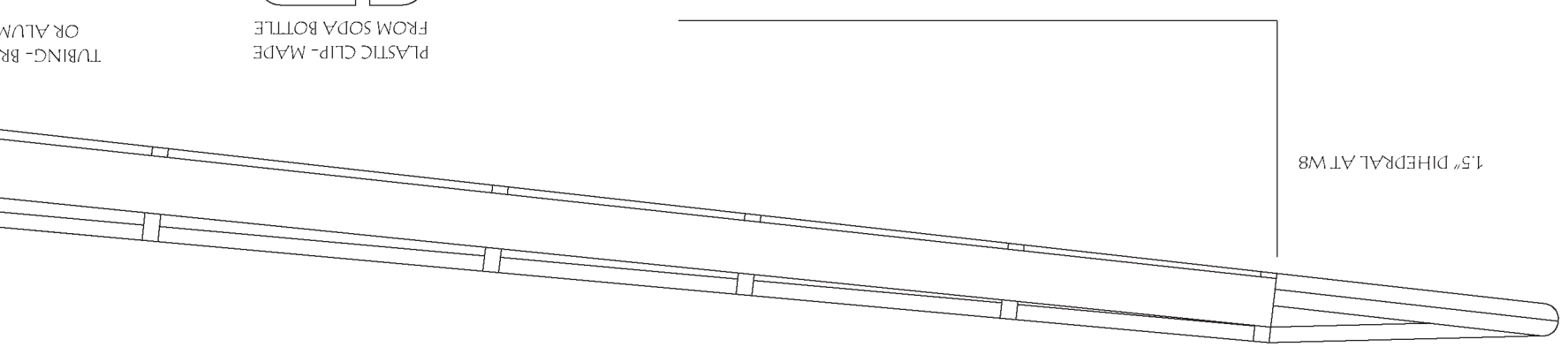


R3
R1

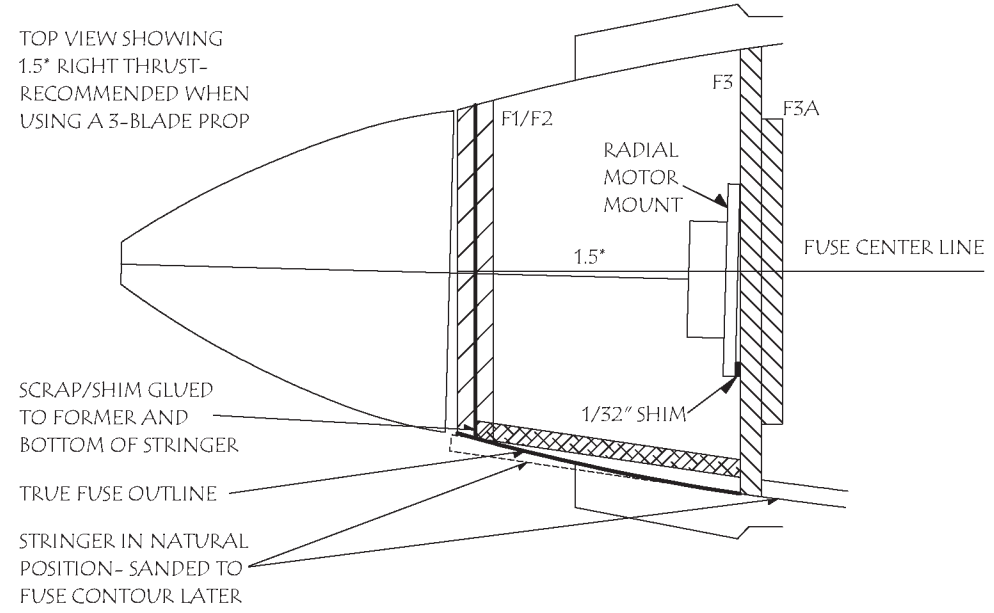
F1
F2
F3
F4
F5
F6



Copyright 2022
 Copying for
 the written
 is

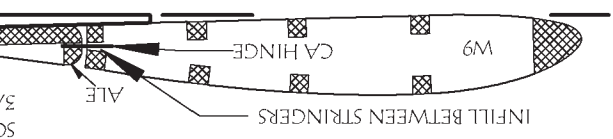



TOP NOSE DETAIL



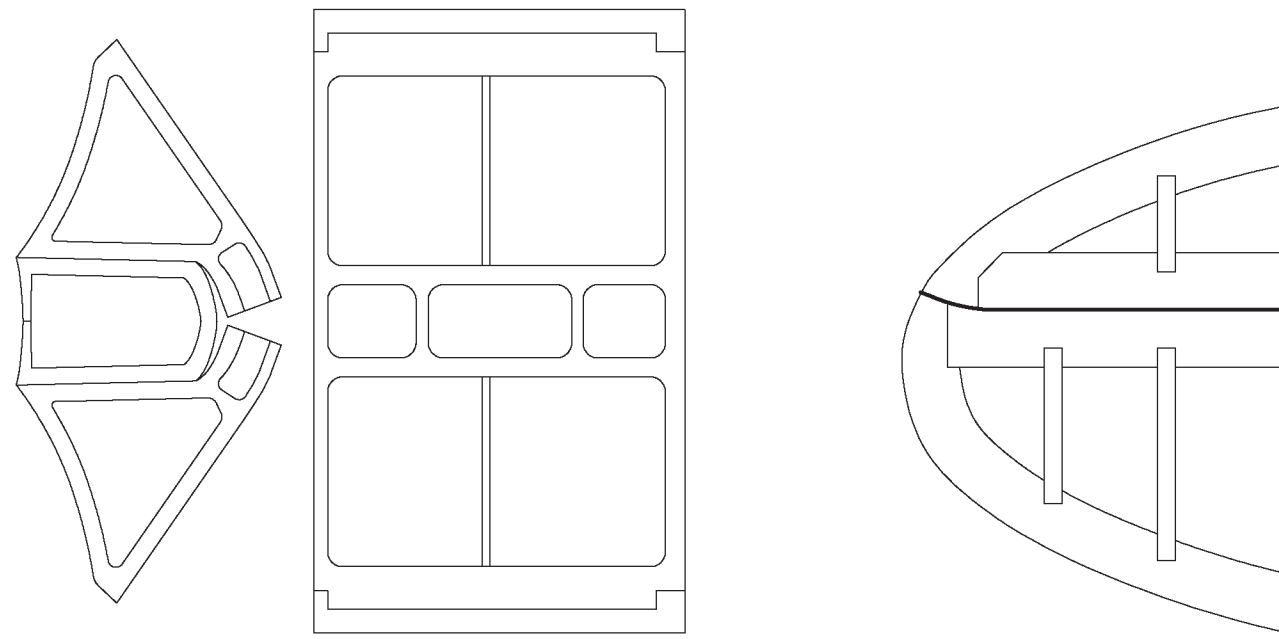
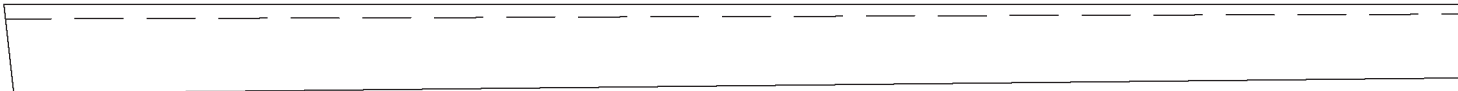
PLANS CAN BE SA

1/16" PLANO



ht 2022  and **ModelAviation**
 ing for resale of this drawing without
 written approval or consent of AMA
 is expressly prohibited.

TEMPLATE FOR LEADING EDGE- PASHED LINE IS CUT AWAY ONCE WING IS UNPINNED FROM BOARD



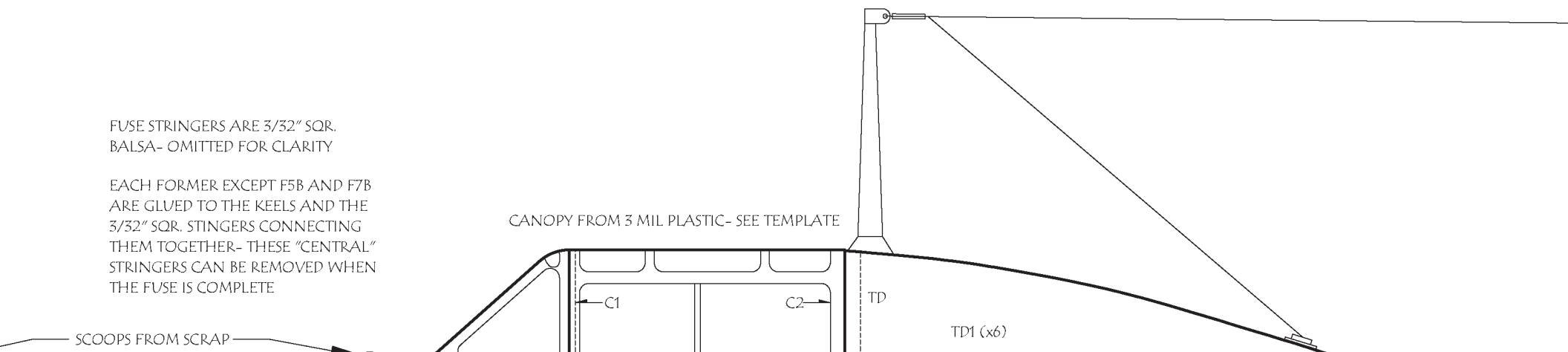
CANOPY TEMPLATES- MAKE FROM 3 MIL CLEAR PLASTIC

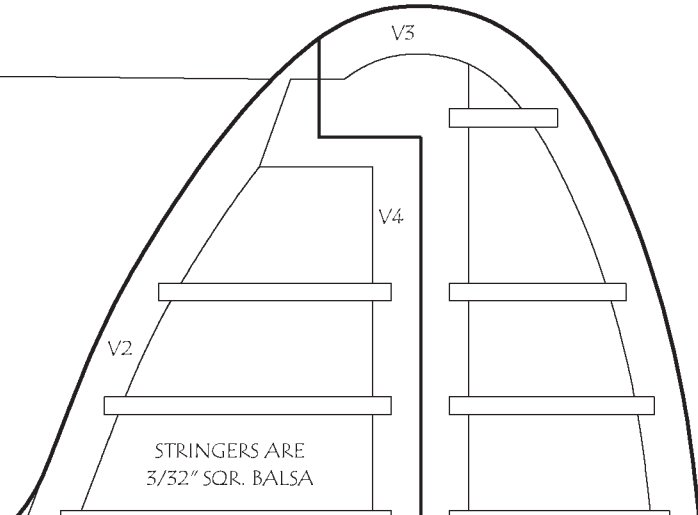
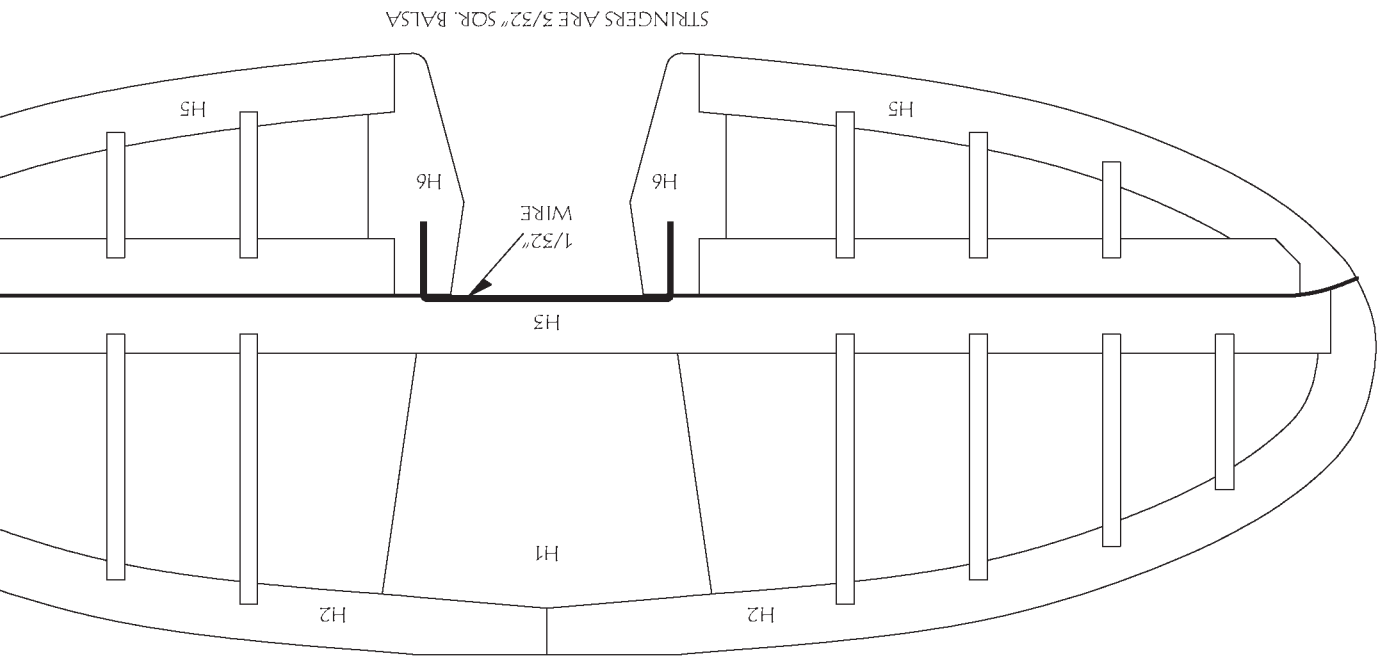
CAN BE SAFELY CUT ALONG THE DOTTED LINE

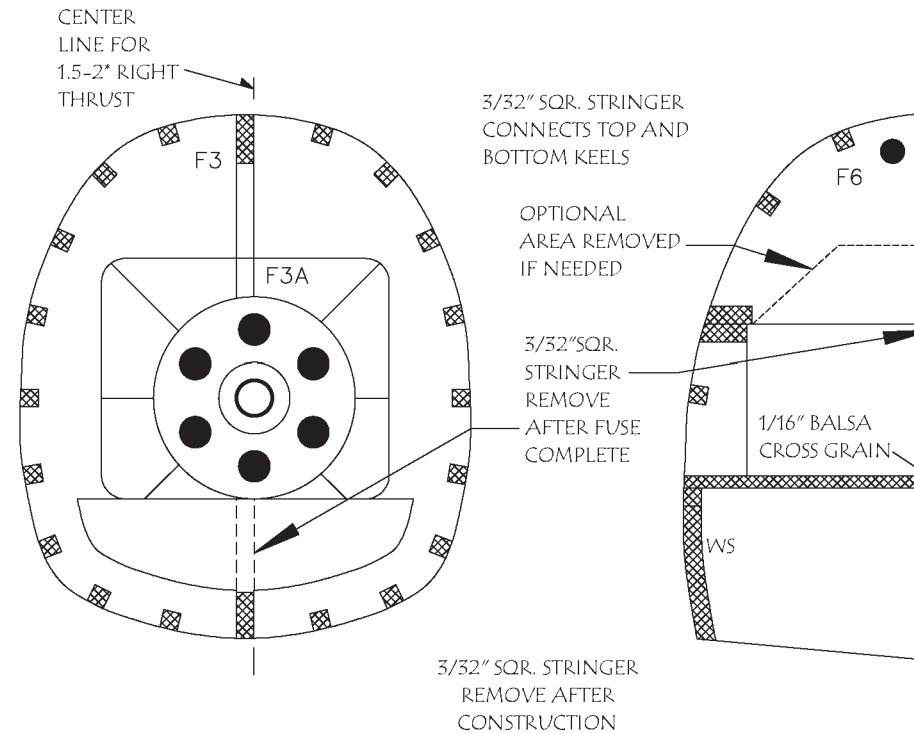
FUSE STRINGERS ARE 3/32" SQR.
BALSA- OMITTED FOR CLARITY

EACH FORMER EXCEPT F5B AND F7B
ARE GLUED TO THE KEELS AND THE
3/32" SQR. STRINGERS CONNECTING
THEM TOGETHER- THESE "CENTRAL"
STRINGERS CAN BE REMOVED WHEN
THE FUSE IS COMPLETE

CANOPY FROM 3 MIL PLASTIC- SEE TEMPLATE



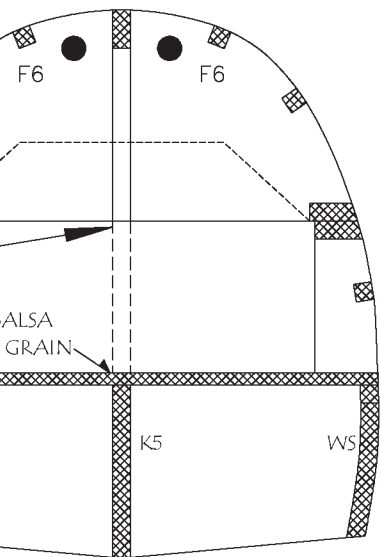




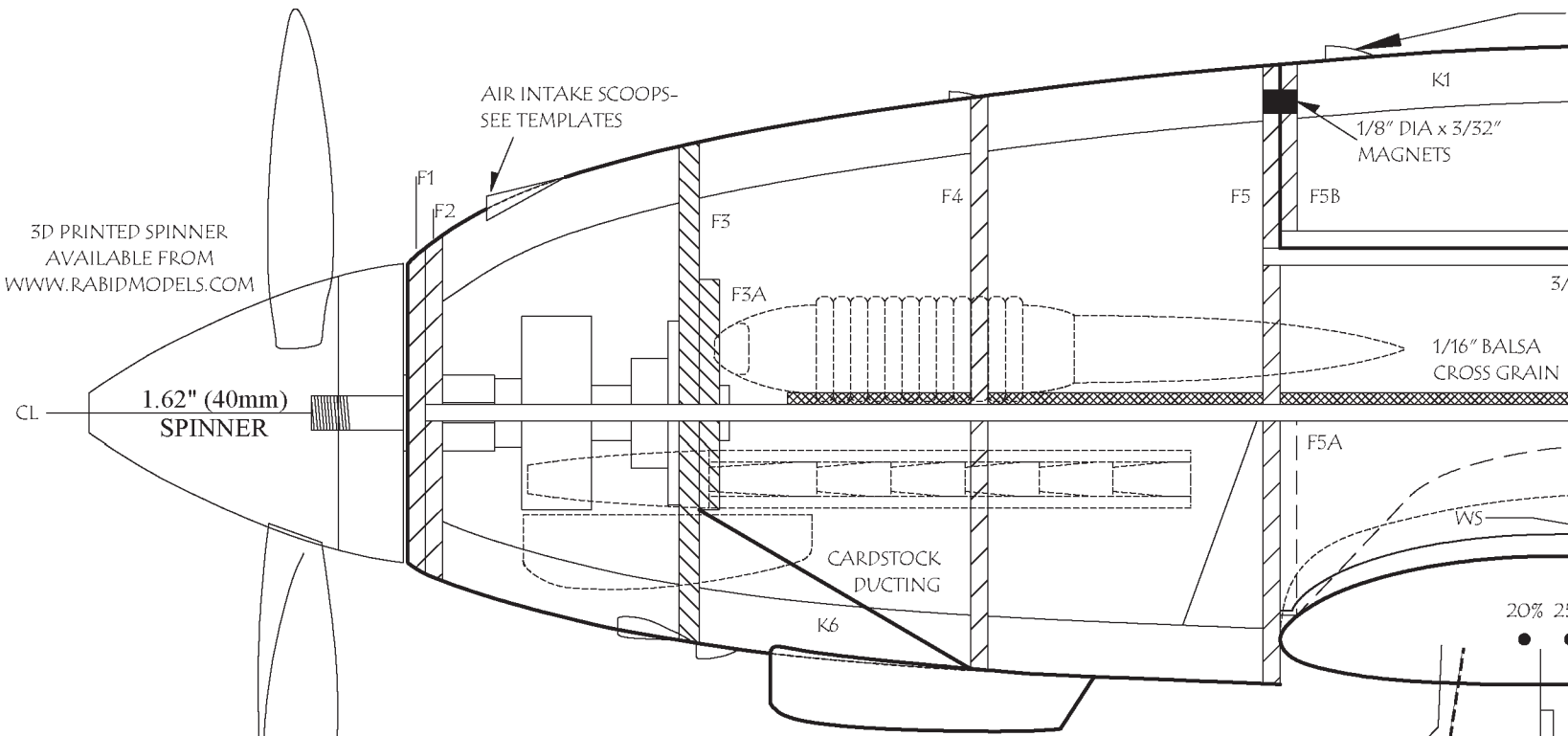
FUSE CONSTRUCTION

1. PIN K1 – K6 TO THE PLANS. AT EACH FORMER LOCATION, ADD 3/32" SQR. STRINGERS. THE FORMER HALVES WILL BE GLUED IN PLACE.
2. ADD F5A, F7A, AND 10A TO THEIR RESPECTIVE FORMERS. GLUE F2 TO F11 (EXCEPT F5B AND F7B) IN PLACE MAKING SURE THEY ARE ALL POINTING FORWARD. ADD THE 3/32" X 1/4" BOTTOM HATCH AND HORIZONTAL RAILS (TOP AND BOTTOM).
3. ADD ALL THE 3/32" SQR. STRINGERS EXCEPT THE TOP TWO. STRINGERS FORWARD OF F3 CAN UTILIZE THE "PIGGY-BACK" METHOD. STRINGERS BEHIND F3 END AT F10. UNDER THE BOTTOM HORIZONTAL RAIL, ADD 3 STRINGERS EVENLY SPACED.
4. GLUE TCL-A IN PLACE- THE CUT OUT ALLOWS FOR TW2 TO SIT IN PLACE. ADD THE REST OF THE TCLS.
5. WET THE OUTSIDE EDGE OF WS AND GLUE IN PLACE.
6. REMOVE THE FUSE FROM THE BOARD AND ADD THE OTHER FORMERS AND STRINGERS. ADD THE CARDBOARD DUCTING.
7. ADD 3/32" X 1/8" MAGNETS IN F5, F5B, F7B AND F7C MINDING THE POLARITY. USE CLEAR TAPE ON THE FRONT OF F5B, F7B AND F7C. TAPE THE BACK OF FB6 TO ENSURE THE UPPER HATCH RAIL AND OTHER FORMERS ARE NOT GLUED TO THE FUSE. SLIDE THE UPPER HATCH RAIL INTO PLACE. ADD THE TOP STRINGERS AND REMOVE THE TAPE.
8. ADD F1 AND BLEND THE FRONT STRINGERS PER THE PLANS AND THE ETCH ON F1. SHAPE THE TCL/R PARTS TO A CONE. ADD THE 1/16" Balsa CROSS SHEETING PER THE PLANS.
9. MOUNT THE MOTOR PER THE TOP NOSE DETAIL.

STRINGER IN NATURAL
POSITION- SANDED TO
FUSE CONTOUR LATER



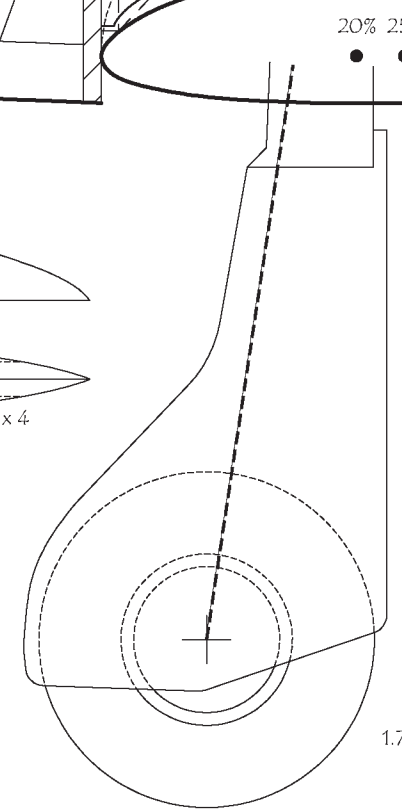
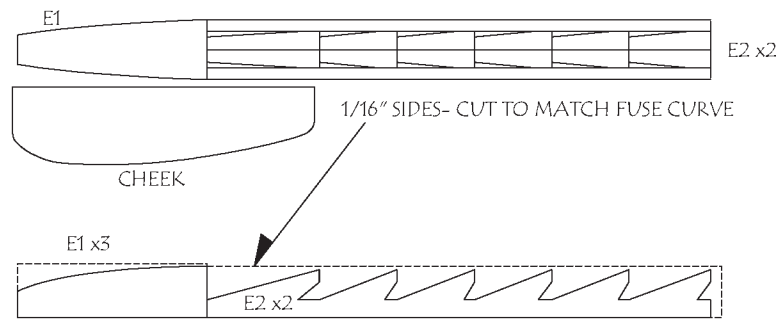
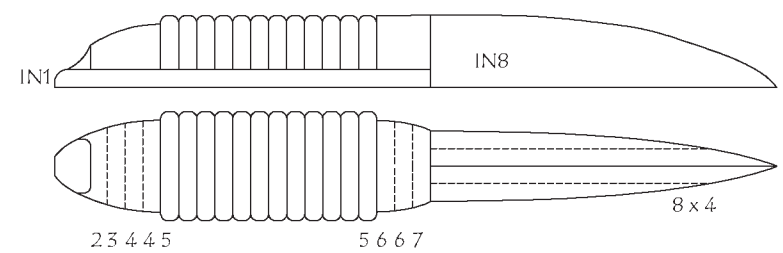
3D PRINTED SPINNER
AVAILABLE FROM
WWW.RABIDMODELS.COM



WILL BE GLUED ON TOP OF THE KEELS AND STRINGERS.
MAKING SURE THE ETCHED MARKS OF F3 ARE FACING

"EGGY-BACK" METHOD (TOP NOSE DETAIL). ALL STRINGERS
EVENLY SPACED BETWEEN F10A AND F11- THESE REST ON

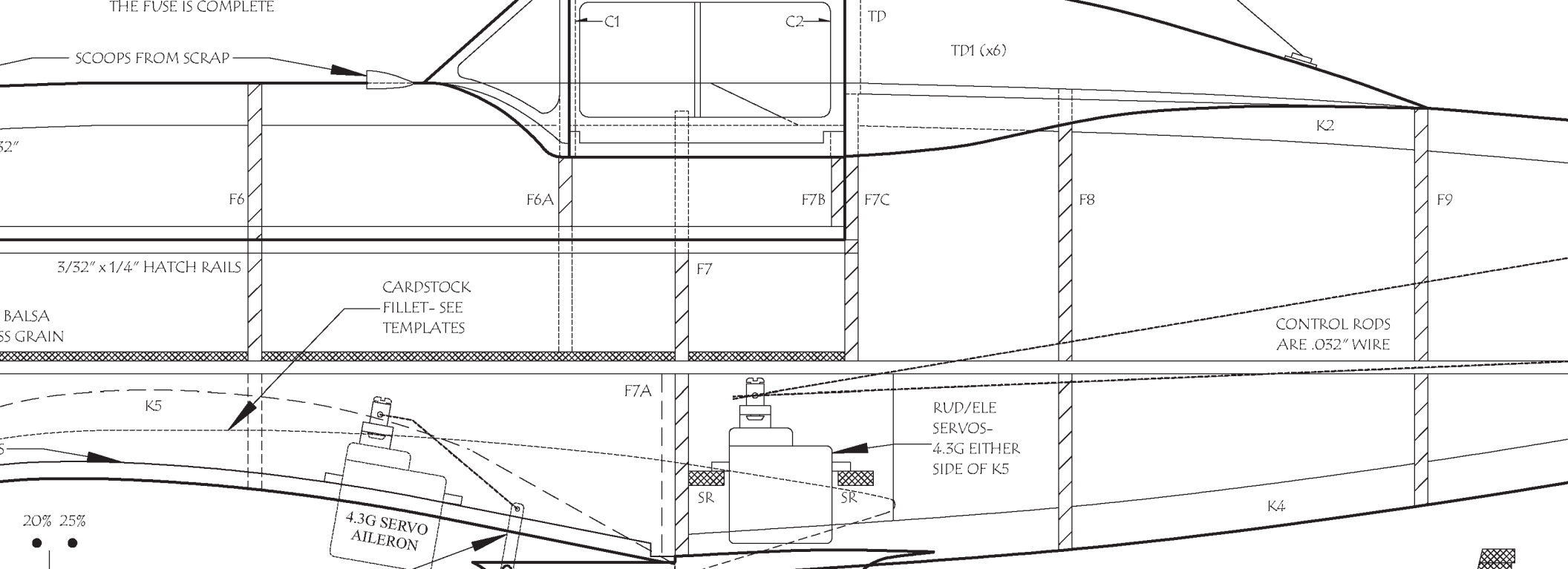
K DUCTING.
NT OF F5B, THE TOP OF THE LOWER HATCH RAIL, AND THE
E THE UPPER HATCH RAIL IN PLACE AND ADD F5B AND F7B AND
TO A CONICAL SHAPE. SAND/BLEND THE HATCH RAILS TO



1.7

THE FUSE IS COMPLETE

SCOOPS FROM SCRAP



20% 25%

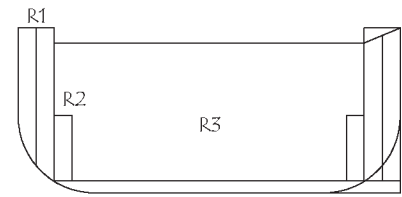
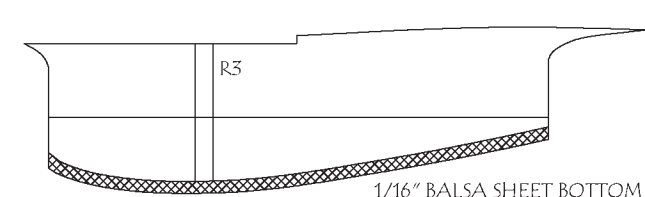
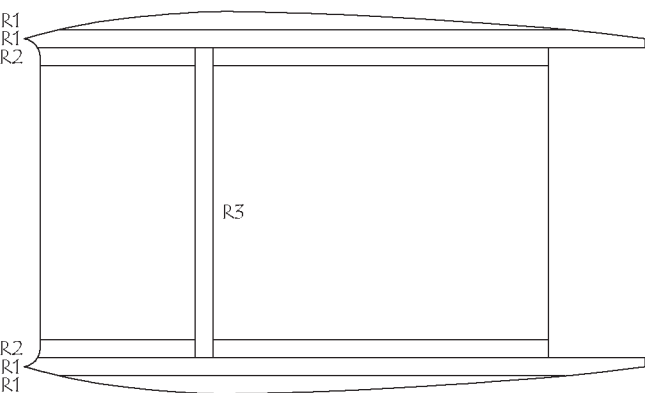
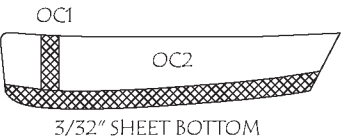
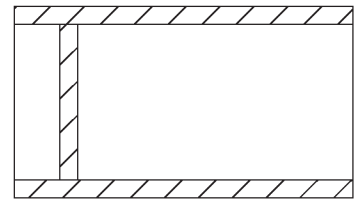
NOTE THE ANGLE OF THE BRASS LINKAGE

CONTROL THROWS:
AILERONS +/- 1/4"
ELEVATOR +/- 3/8"
RUDDER +/- 1/2"

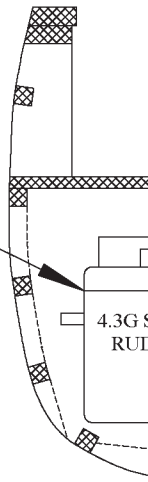
POWER: 24g 1700 KV BL MOTOR
12-15 AMP ESC
2S 450-550 MAH LIPO
8" x 4.5" 3-BLADE PROPELLER

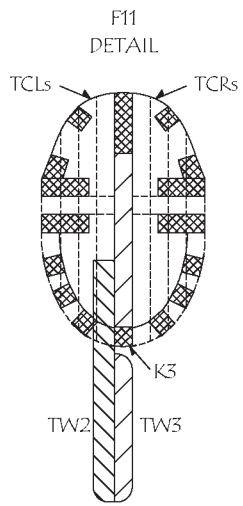
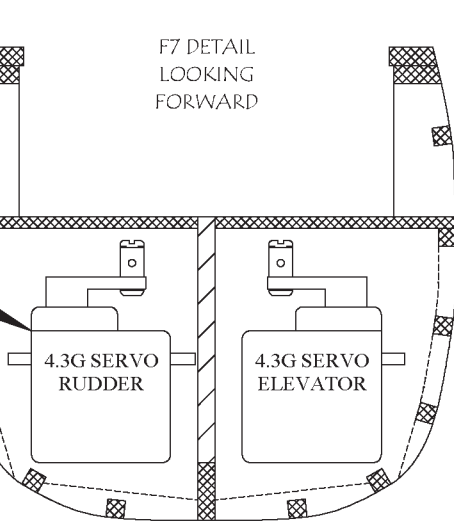
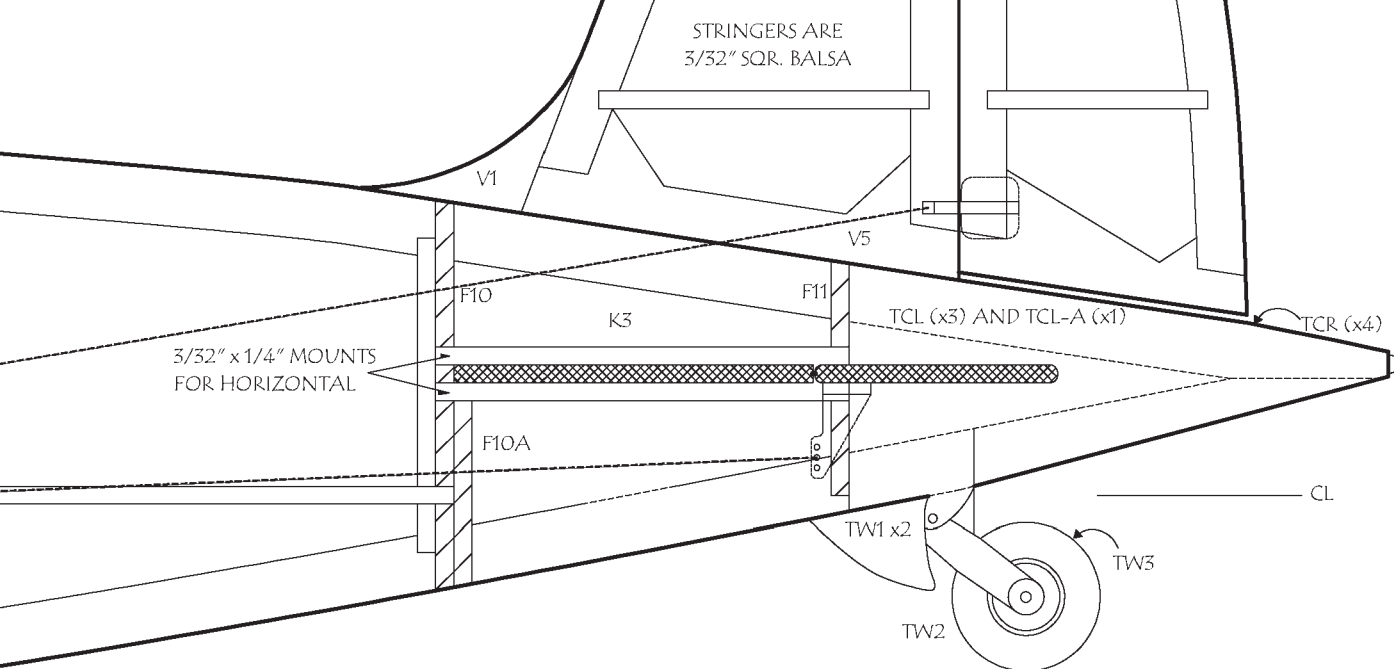
SHORT KIT AVAILABLE FROM
WWW.MANZANOLASER.COM

ALTERNATE SERVO ARRANGEMENT



1.75" WHEEL





MACCHI 202 FOLGORE

DESIGNED BY DEREK MICKO-
 30" WINGSPAN
 6-9 OUNCES
 CHANNELS: 4
 MOTOR: 18-24 GRAM
 ALL RIGHTS RESERVED

Sheet 1 of 2 Plan No. 1132

