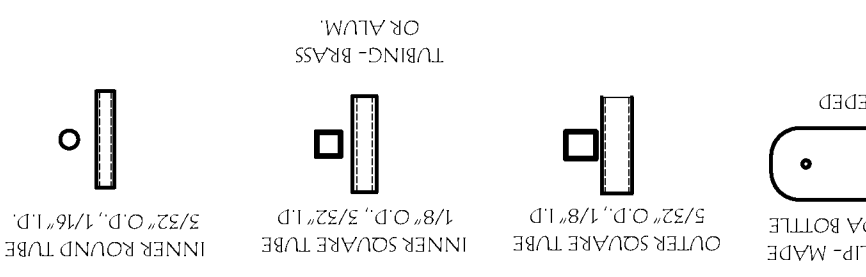
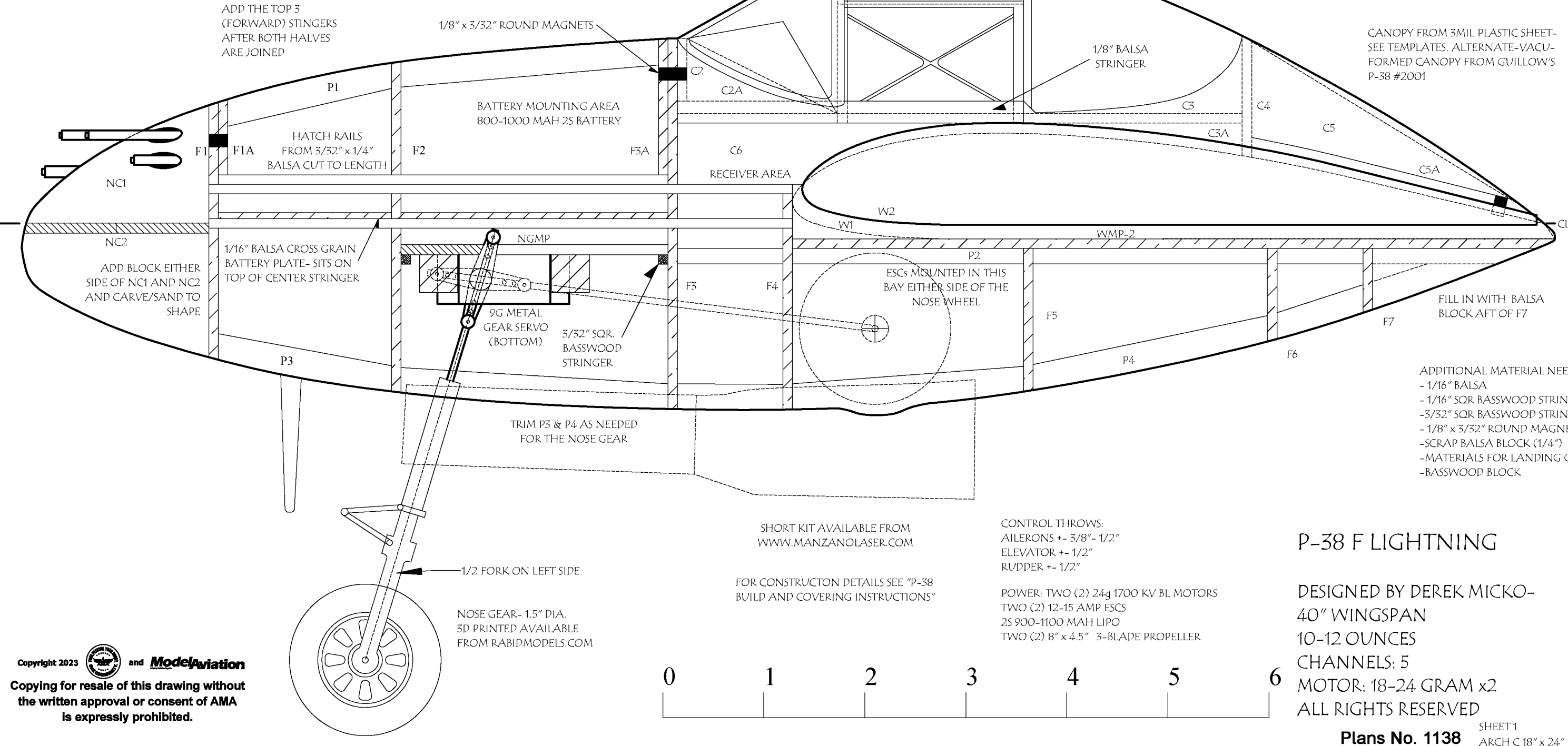
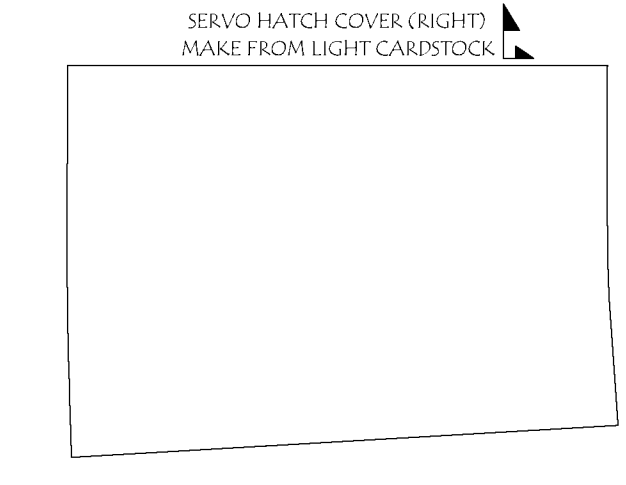
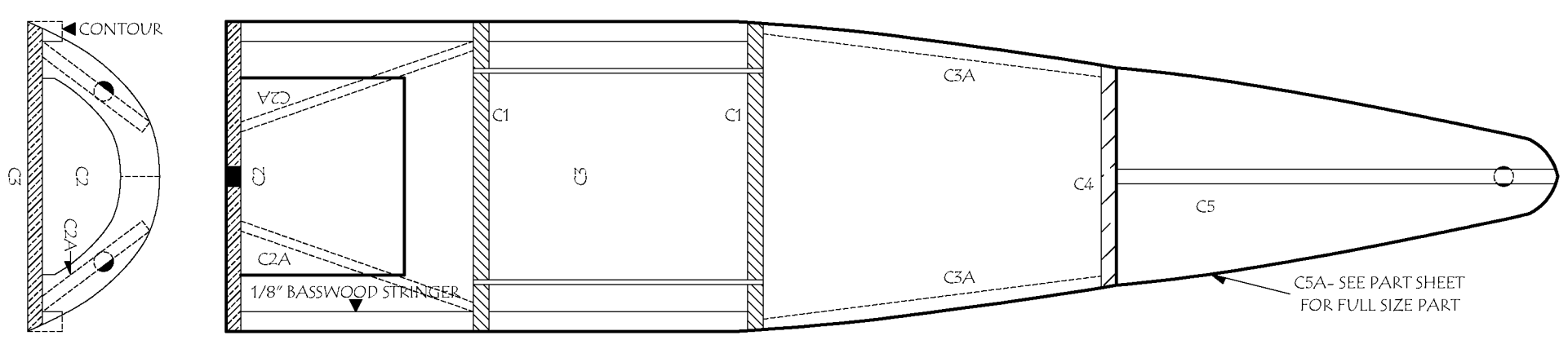
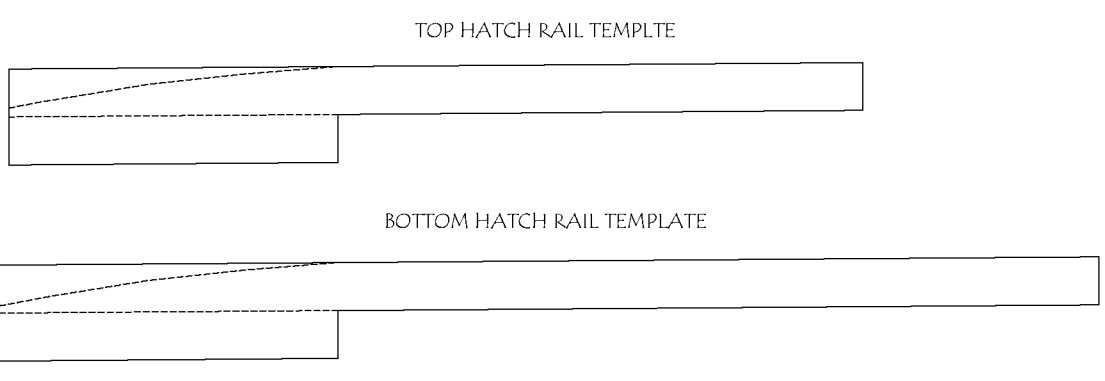
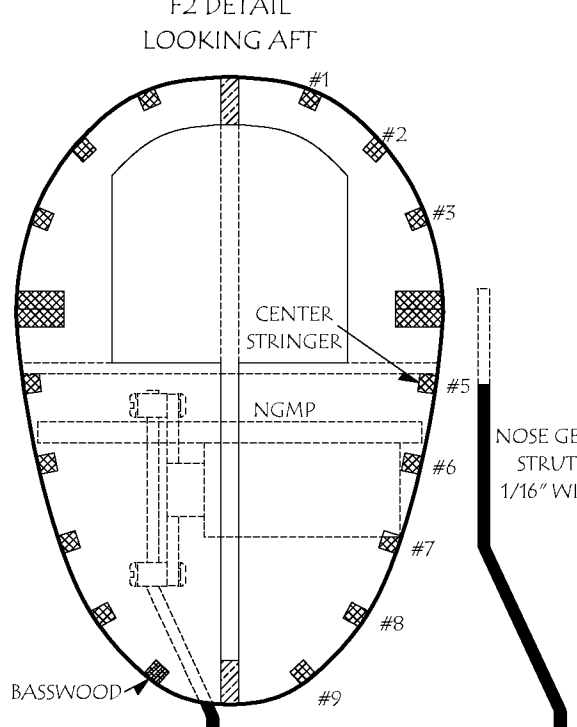
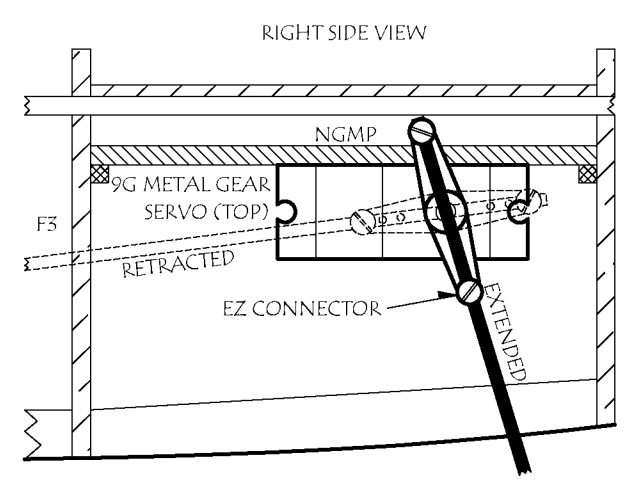
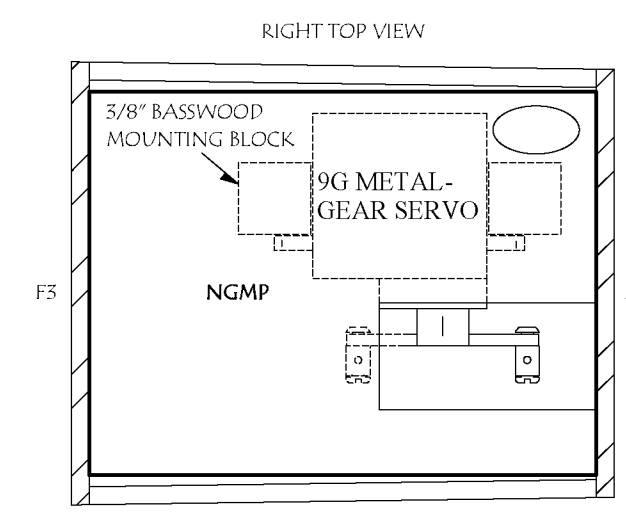


KEEL PROFILE
CANOPY HATCH DETAIL



PLUG-IN GEAR DETAIL



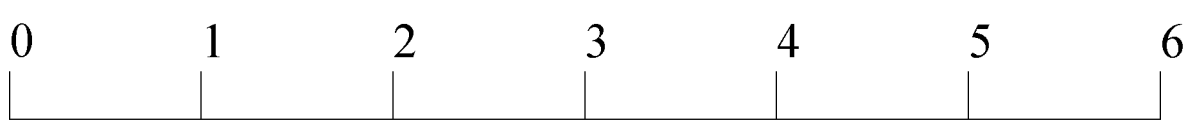
- ADDITIONAL MATERIAL NEEDED
- 1/16" Balsa
 - 1/16" SQR BASSWOOD STRINGER
 - 5/32" SQR BASSWOOD STRINGER
 - 1/8" x 3/32" ROUND MAGNETS
 - SCRAP Balsa BLOCK (1/4")
 - MATERIALS FOR LANDING GEAR
 - BASSWOOD BLOCK

CONTROL THROWS:
AILERONS +/- 3/8" - 1/2"
ELEVATOR +/- 1/2"
RUDDER +/- 1/2"

POWER: TWO (2) 24g 1700 KV BL MOTORS
TWO (2) 12-15 AMP ESCS
25 900-1100 MAH LIPO
TWO (2) 8" x 4.5" 3-BLADE PROPELLER

SHORT KIT AVAILABLE FROM
WWW.MANZANOLASER.COM

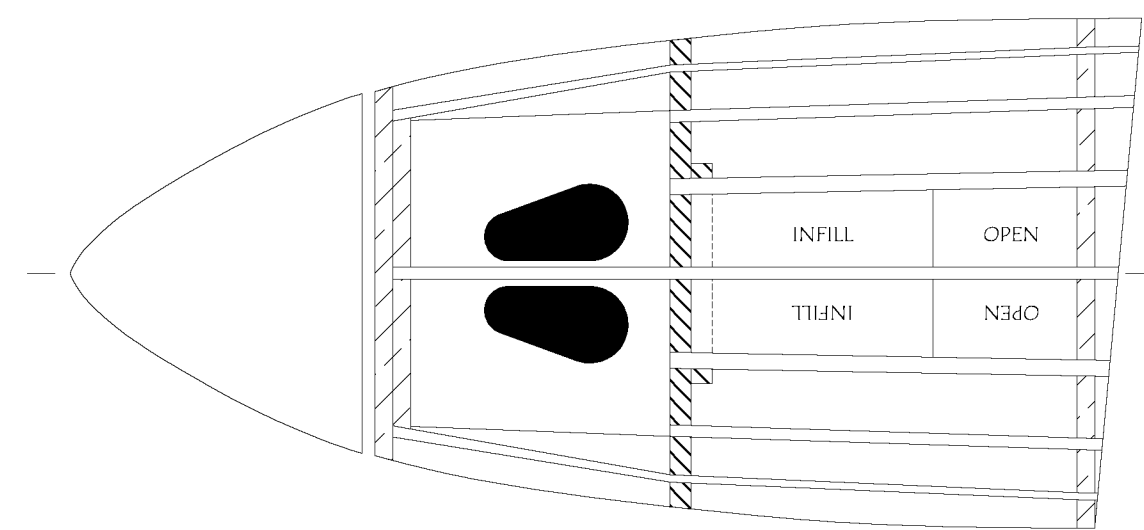
FOR CONSTRUCTION DETAILS SEE "P-38
BUILD AND COVERING INSTRUCTIONS"



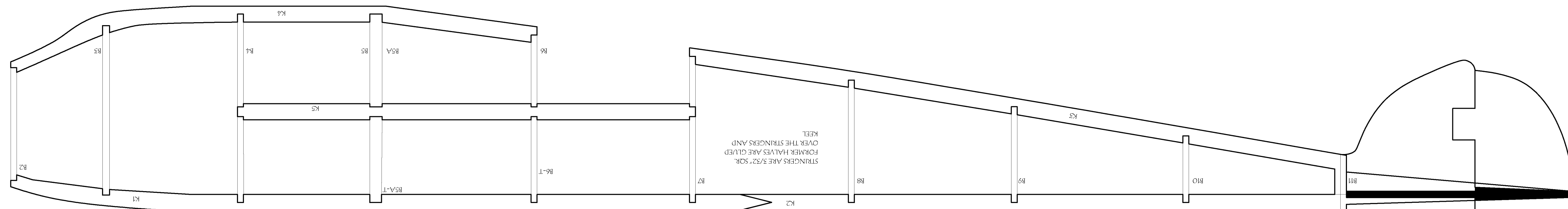
Copyright 2023 and
Copying for resale of this drawing without the written approval or consent of AMA is expressly prohibited.

P-38 F LIGHTNING
DESIGNED BY DEREK MICKO-
40" WINGSPAN
10-12 OUNCES
CHANNELS: 5
MOTOR: 18-24 GRAM x2
ALL RIGHTS RESERVED

Plans No. 1138 SHEET 1
ARCH C 18" x 24"

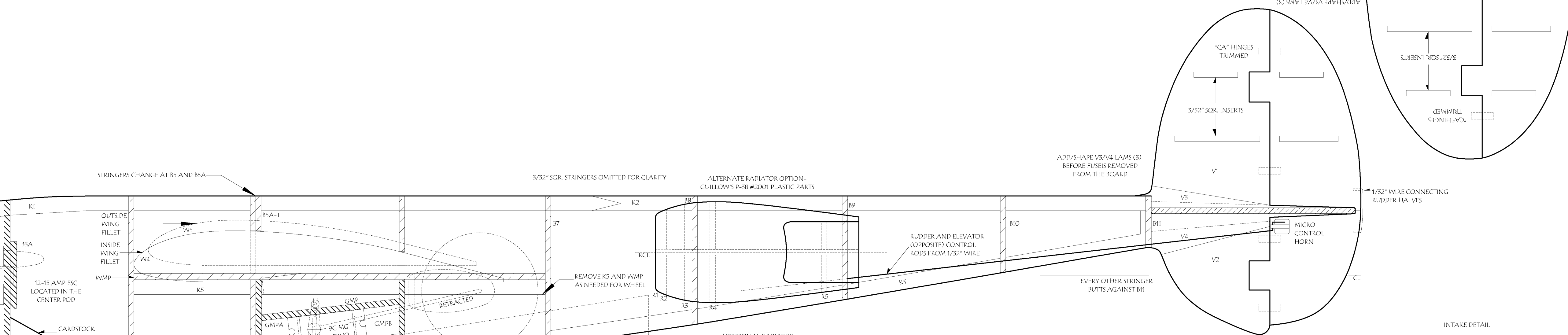
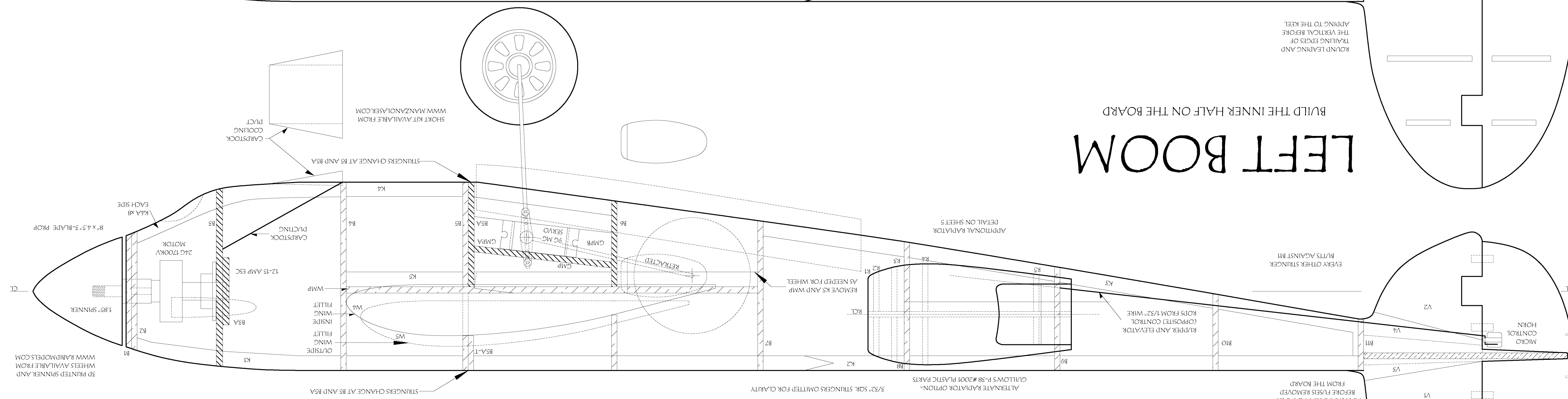


BOTTOM VIEW
LEFT BOOM

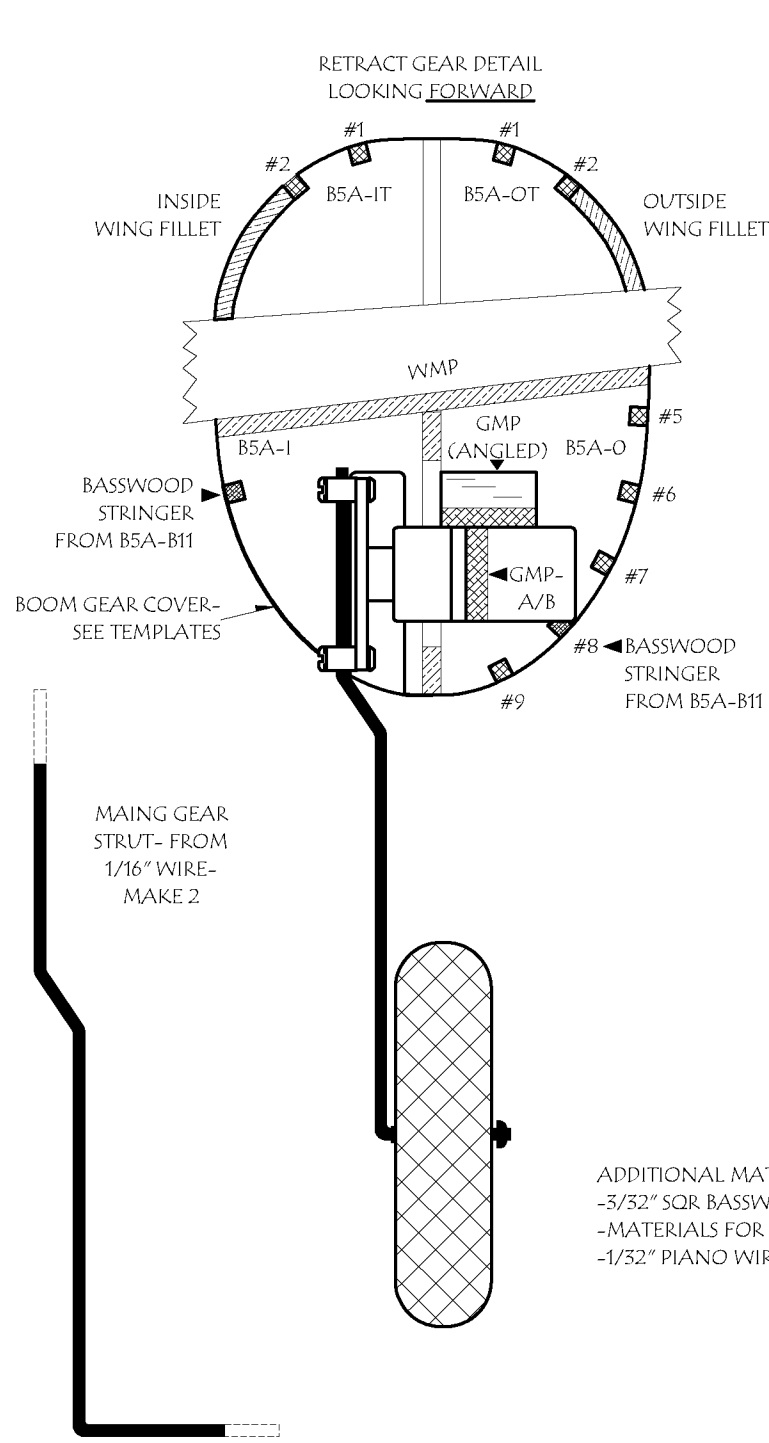


LEFT BOOM

BUILD THE INNER HALF ON THE BOARD



RIGHT BOOM



3D PRINTED SPINNER AND WHEELS AVAILABLE FROM WWW.KABIMODELS.COM

ADDITIONAL MATERIAL NEEDED
-3/32" SCR. BASSWOOD STRINGER
-MATERIALS FOR LANDING GEAR
-1/32" PIANO WIRE

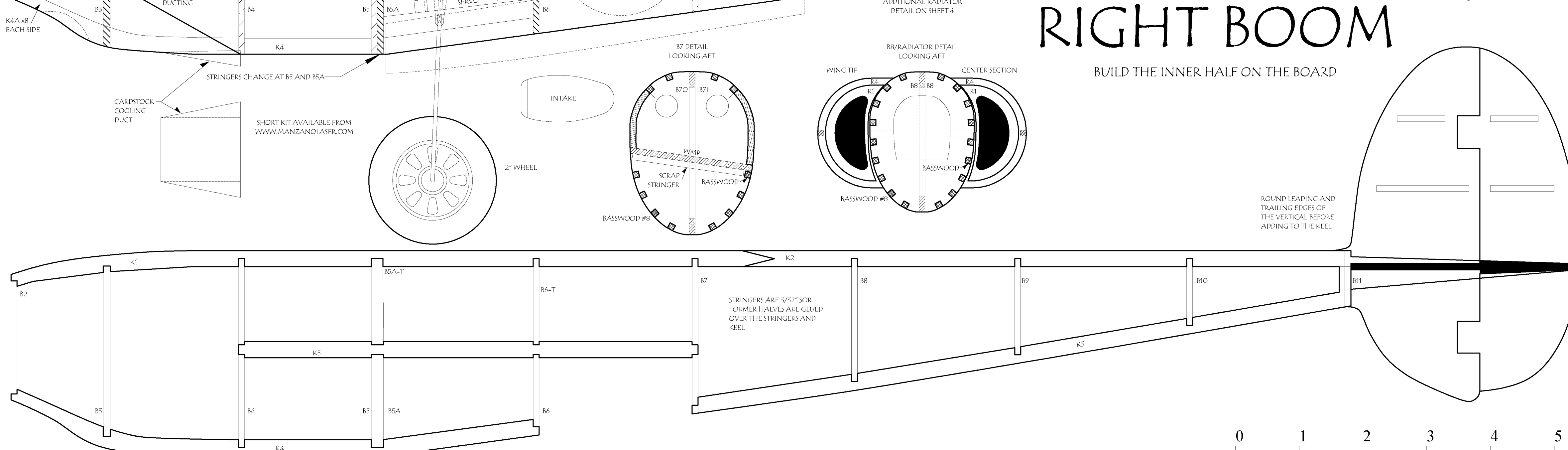
CONTROL THROWS
AILERONS +- 5/8" - 1/2"
ELEVATOR +- 1/2"
RUDDER +- 1/2"

POWER: TWO (2) 24g 1700KV BL MOTORS
TWO (2) 12-15 AMP ESCS
25900-11000 WASH LINE
TWO (2) 8" x 4.5" 5-BLADE PROPELLER

FOR CONSTRUCTION DETAILS SEE "P-38 BUILD AND COVERING INSTRUCTIONS"

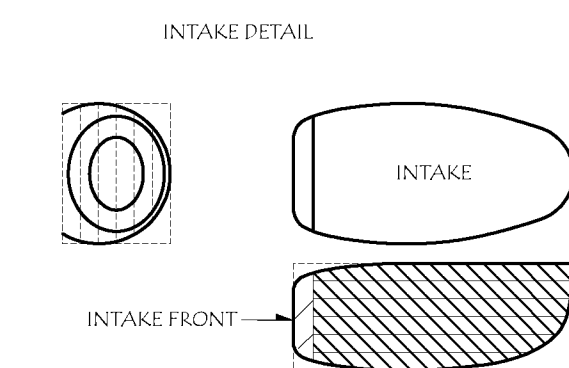
P-38 F LIGHTNING

DESIGNED BY DEREK MICKO-
40" WINGSPAN
10-12 OUNCES
CHANNELS: 5
MOTOR: 18-24 GRAM x2
ALL RIGHTS RESERVED

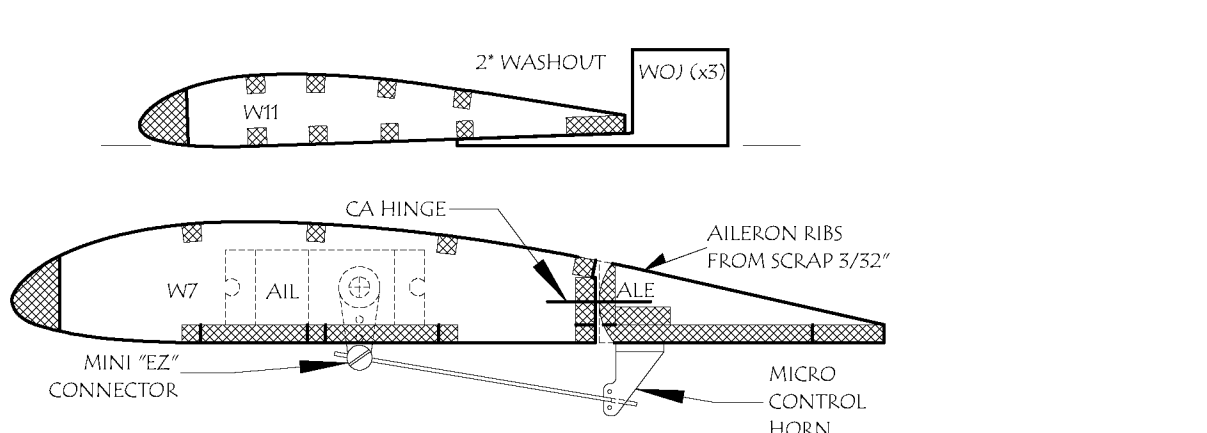
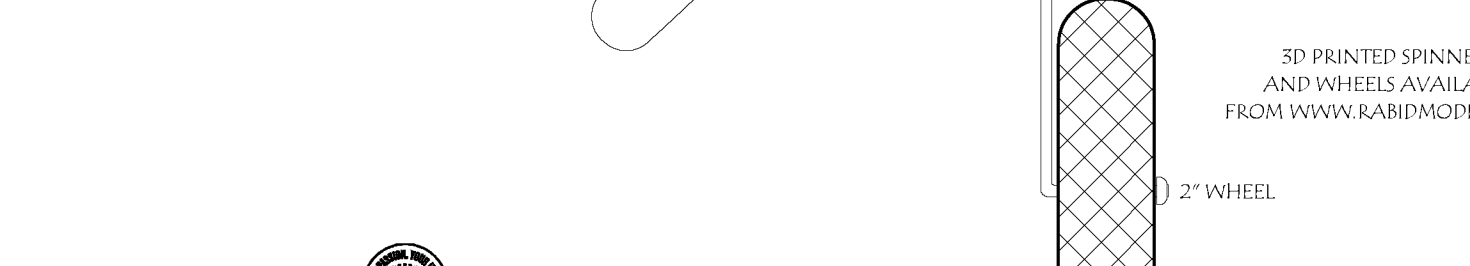
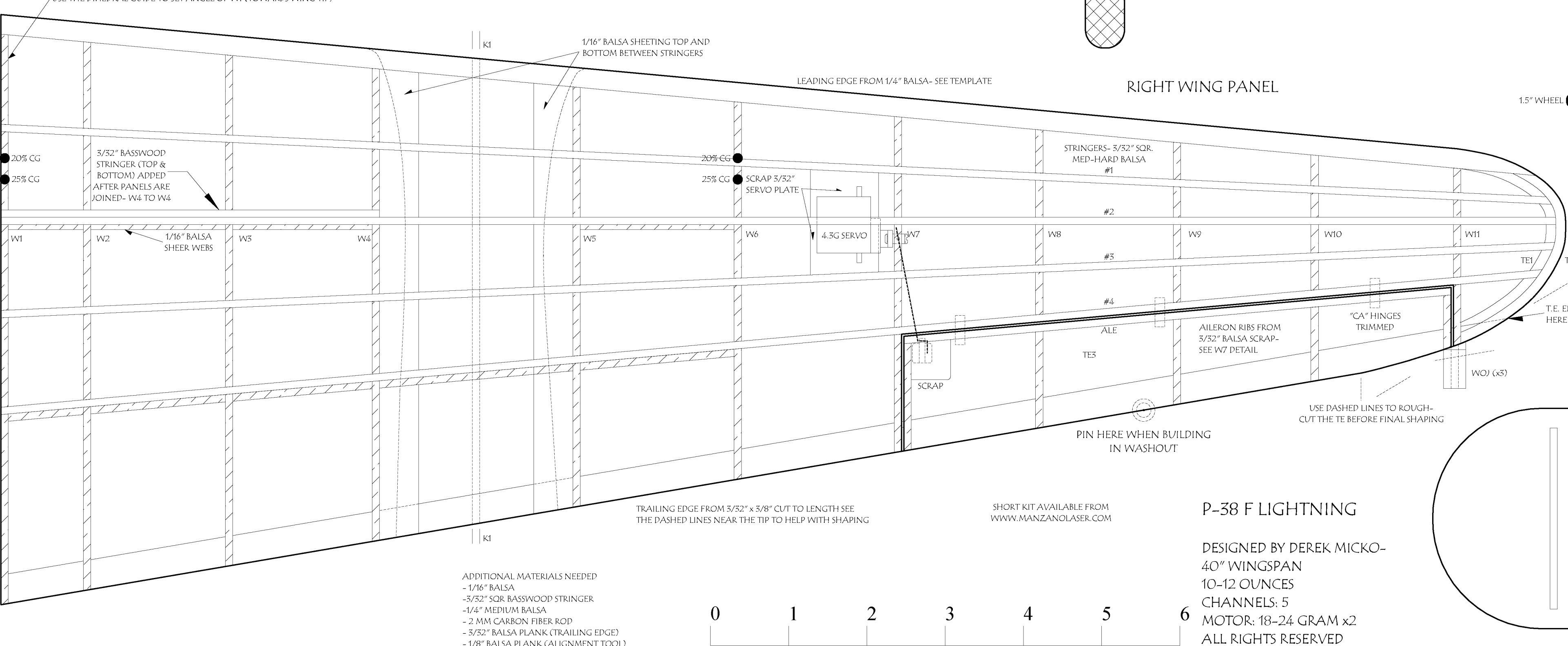
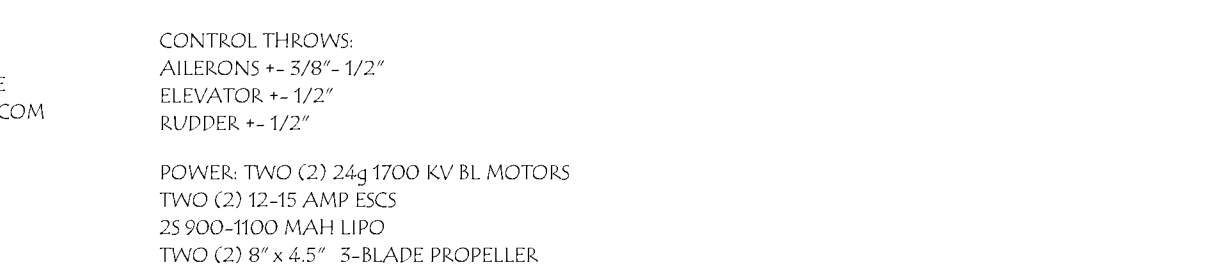
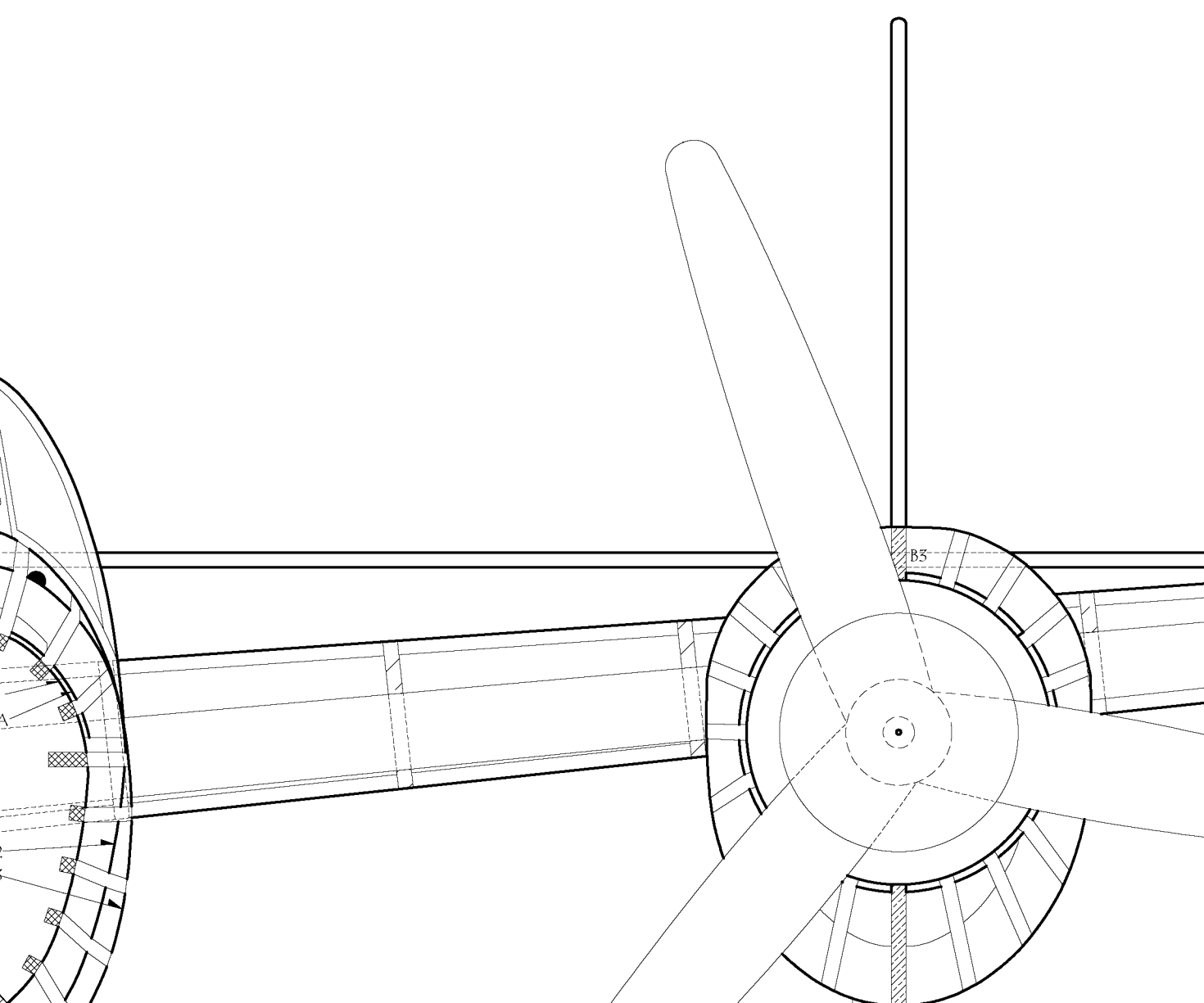
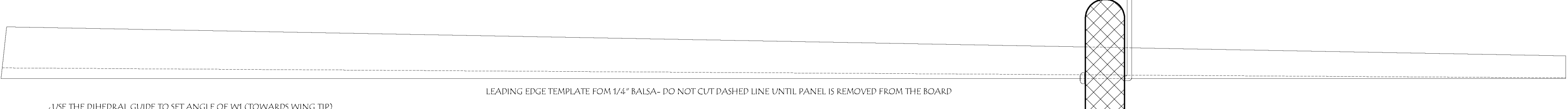
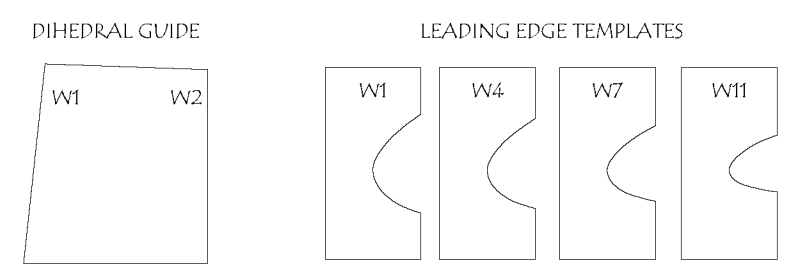
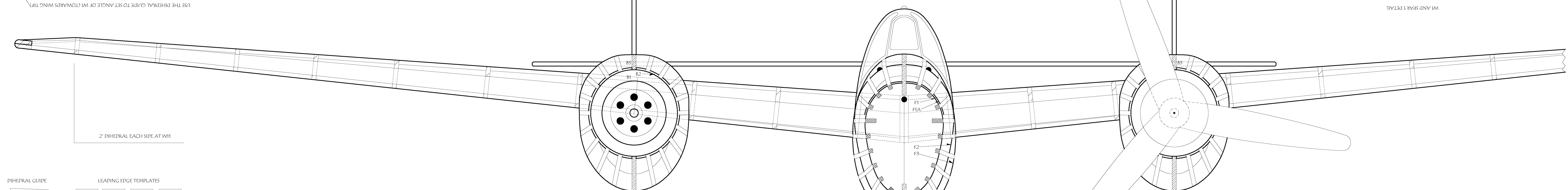
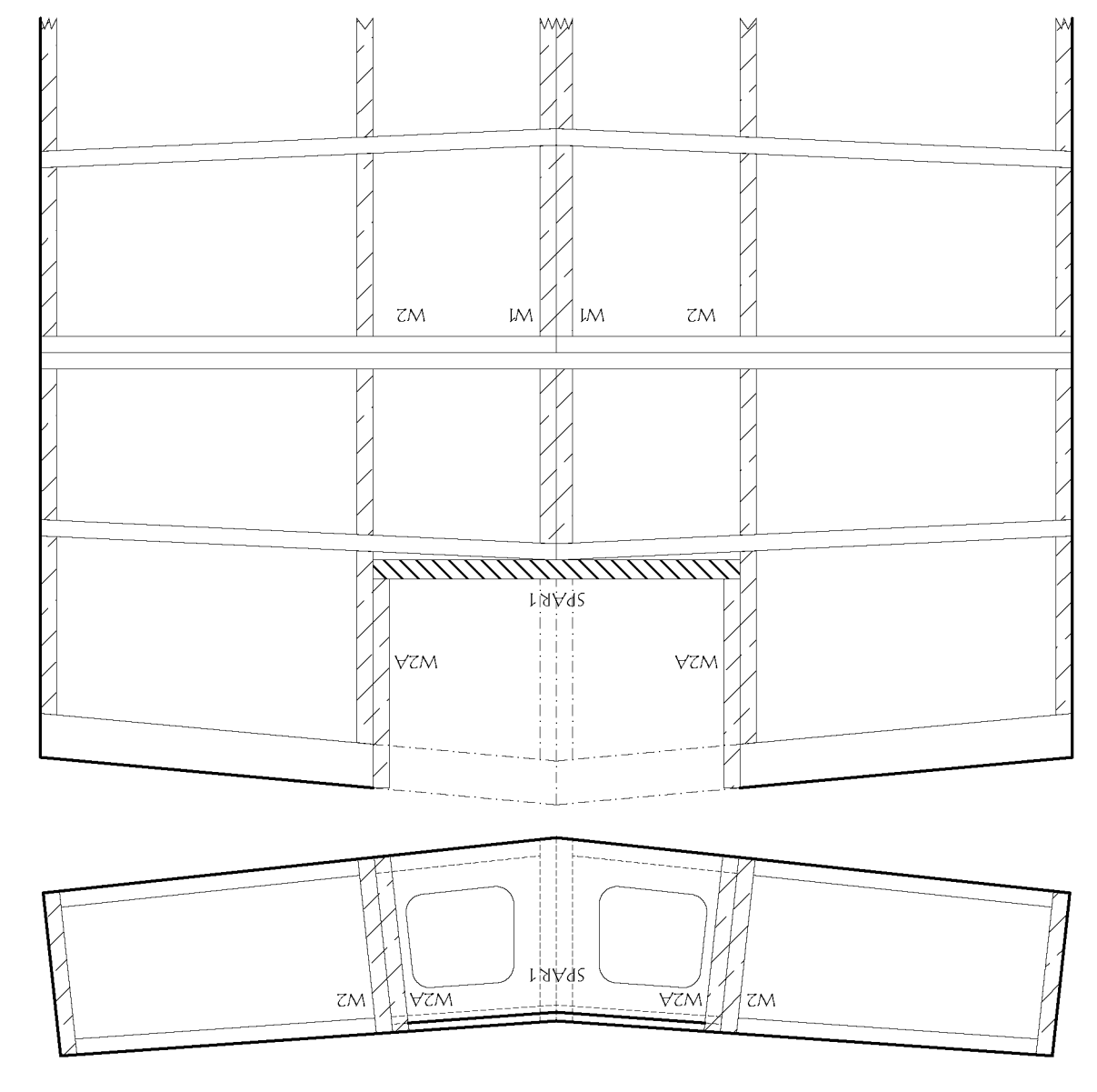
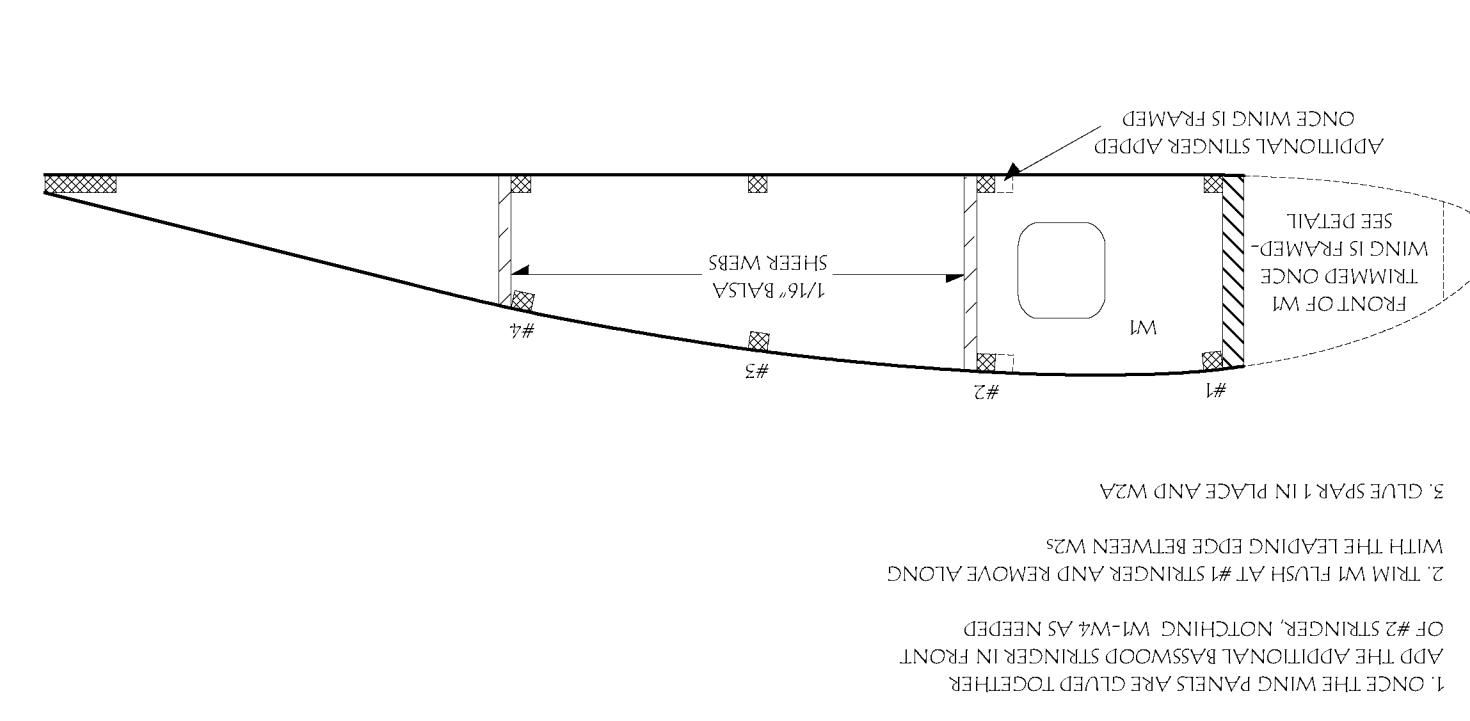
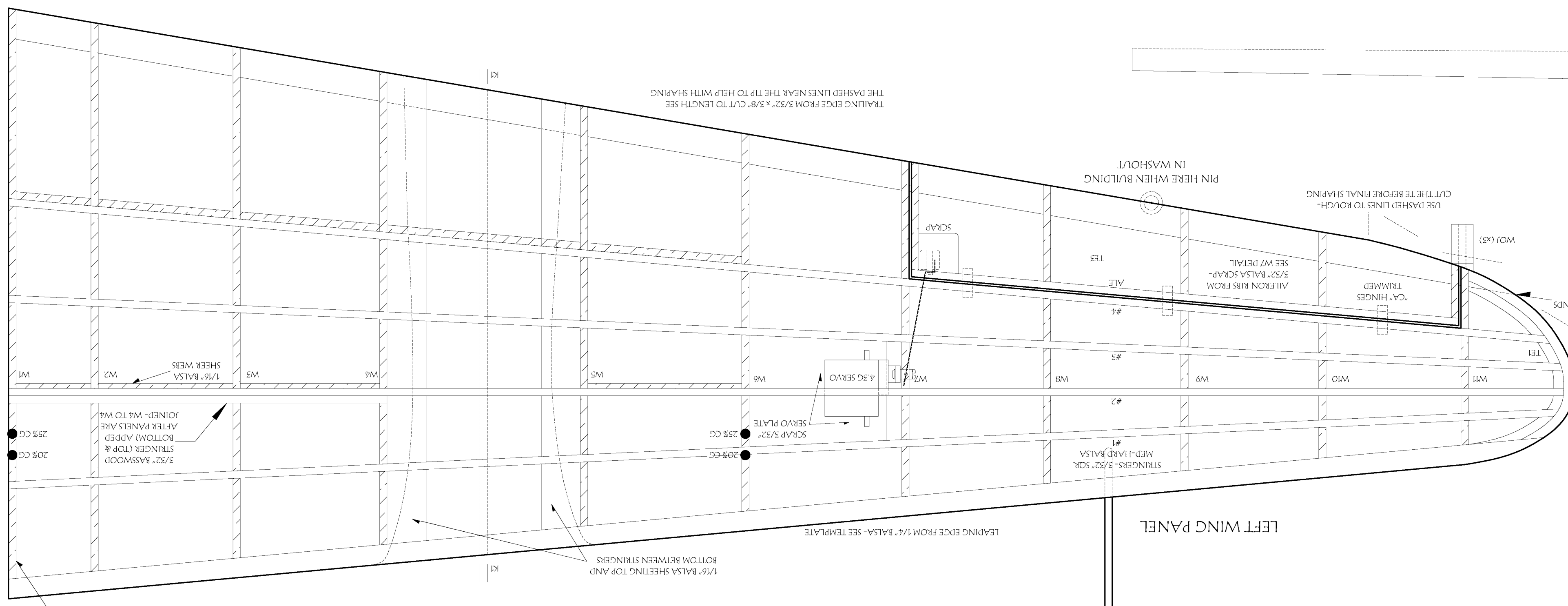


RIGHT BOOM

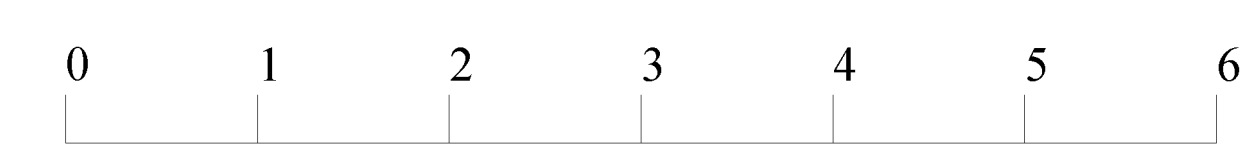
BUILD THE INNER HALF ON THE BOARD



Copyright 2023 Modelation
Copying for resale of this drawing without the written approval or consent of AMA is expressly prohibited.



- ADDITIONAL MATERIALS NEEDED
- 1/8" Balsa
 - 5/32" SQR BASSWOOD STRINGER
 - 1/4" MEDIUM Balsa
 - 2 MM CARBON FIBER ROD
 - 3/32" Balsa PLANK (TRAILING EDGED)
 - 1/8" Balsa PLANK (ALIGNMENT TOOL)



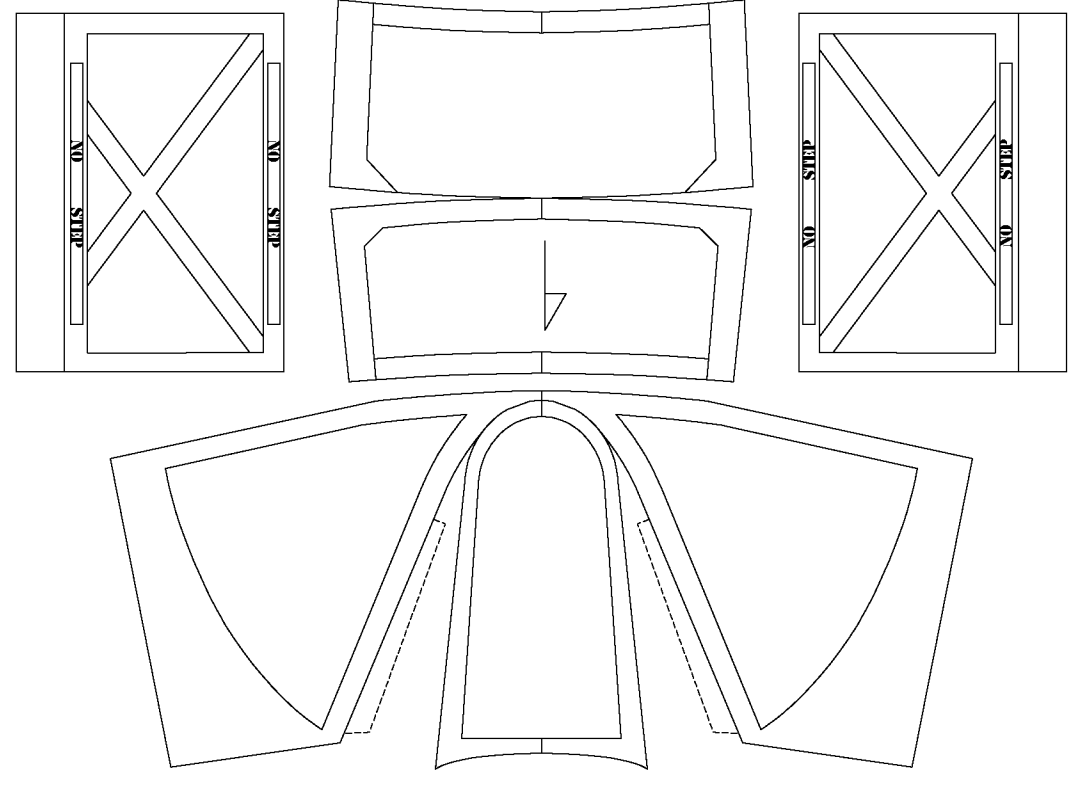
P-38 F LIGHTNING
 DESIGNED BY DEREK MICKO-
 40" WINGSPAN
 10-12 OUNCES
 CHANNELS: 5
 MOTOR: 18-24 GRAM x2
 ALL RIGHTS RESERVED

SHORT KIT AVAILABLE FROM
 WWW.MANZANOLASER.COM

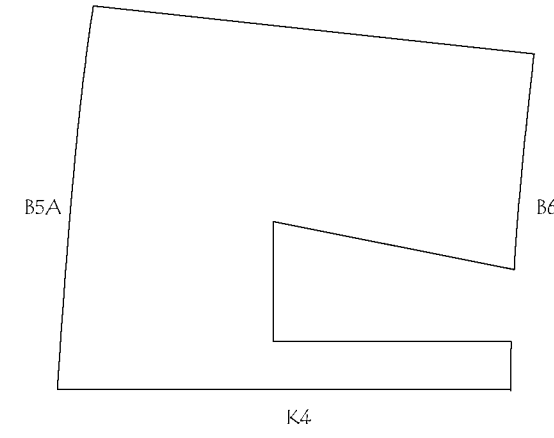
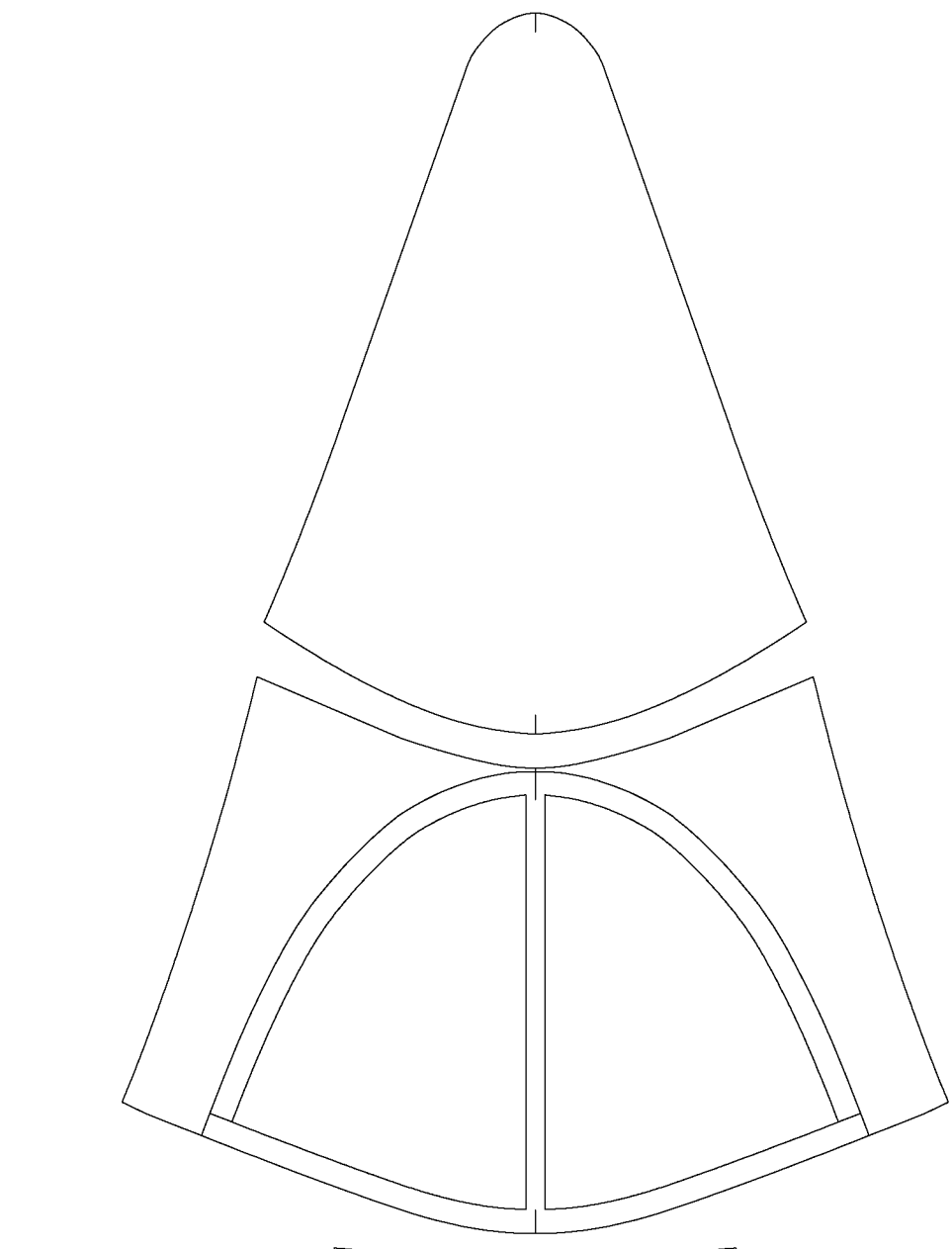
Copyright 2023 and **ModelAviation**
 Copying for resale of this drawing without the written approval or consent of AMA is expressly prohibited.

3D PRINTED SPINNER AND WHEELS AVAILABLE FROM WWW.KABIMODELS.COM

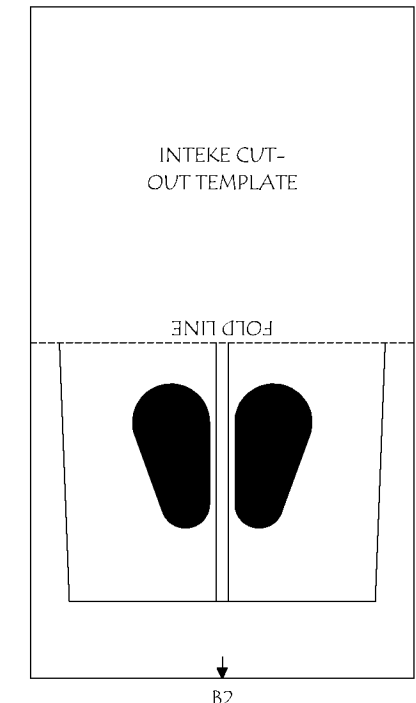
CONTROL THROWS:
 AILERONS +/- 5/8" - 1/2"
 ELEVATOR +/- 1/2"
 RUDDER +/- 1/2"
 POWER: TWO (2) 24g 1700 KV BL MOTORS
 TWO (2) 12-15 AMP ESCS
 25 900-1100 MAH LIPO
 TWO (2) 8" x 4.5" 3-BLADE PROPELLER



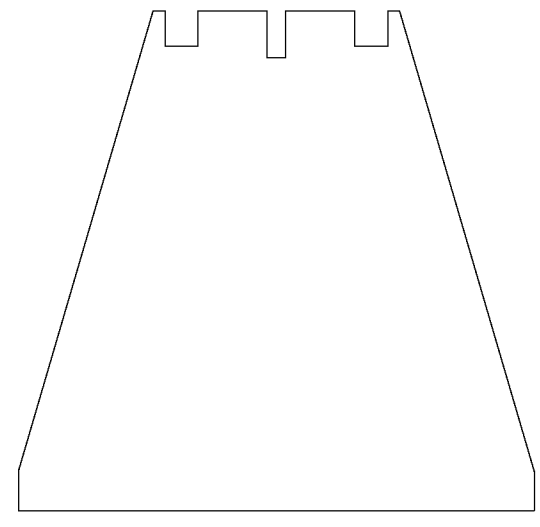
CANOPY TEMPLATES



INNER GEAR OPENING COVER TEMPLATE



INTEKE CUT-OUT TEMPLATE

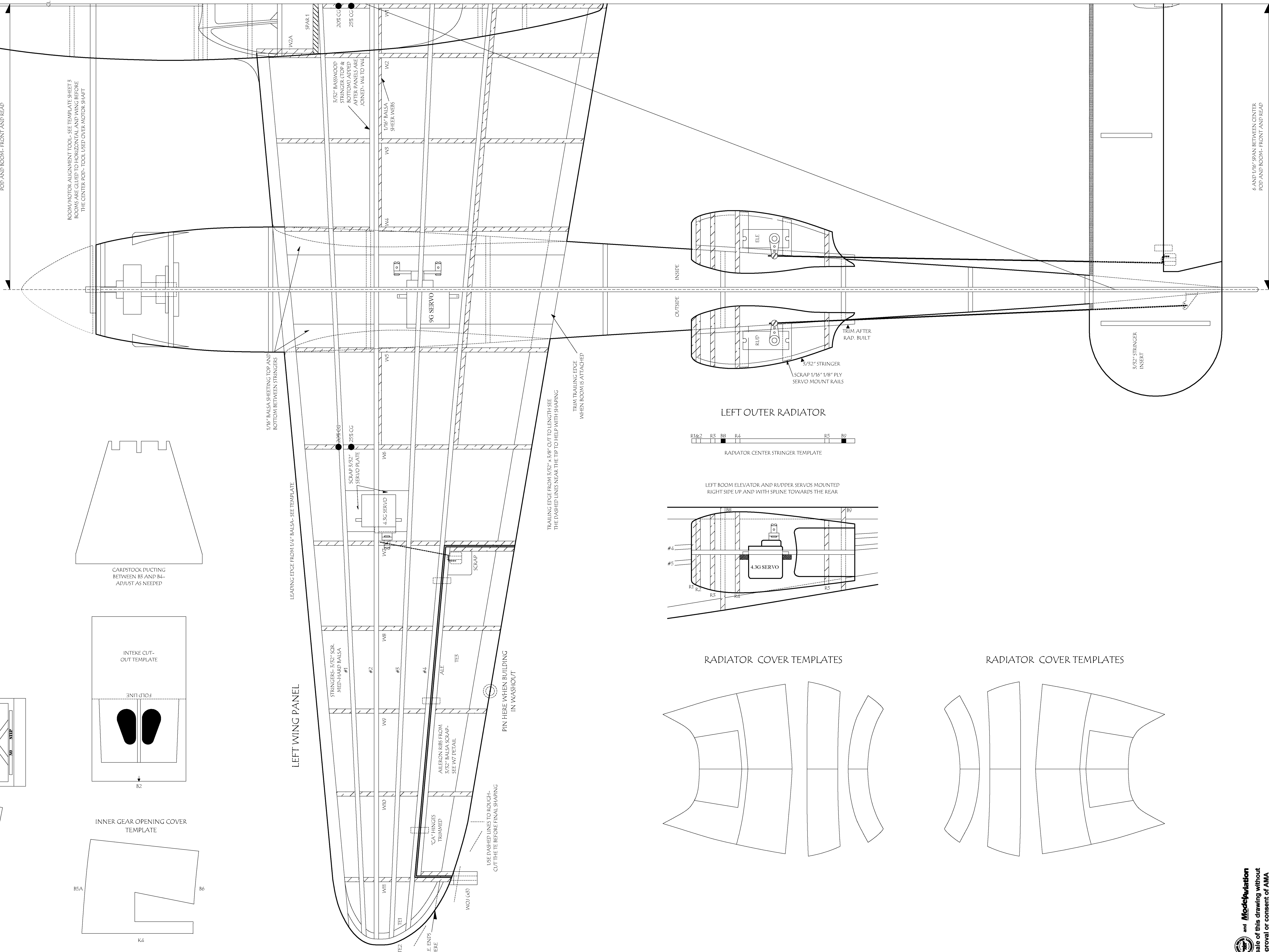


CARBON DUCTING BETWEEN B5 AND B4- ADJUST AS NEEDED

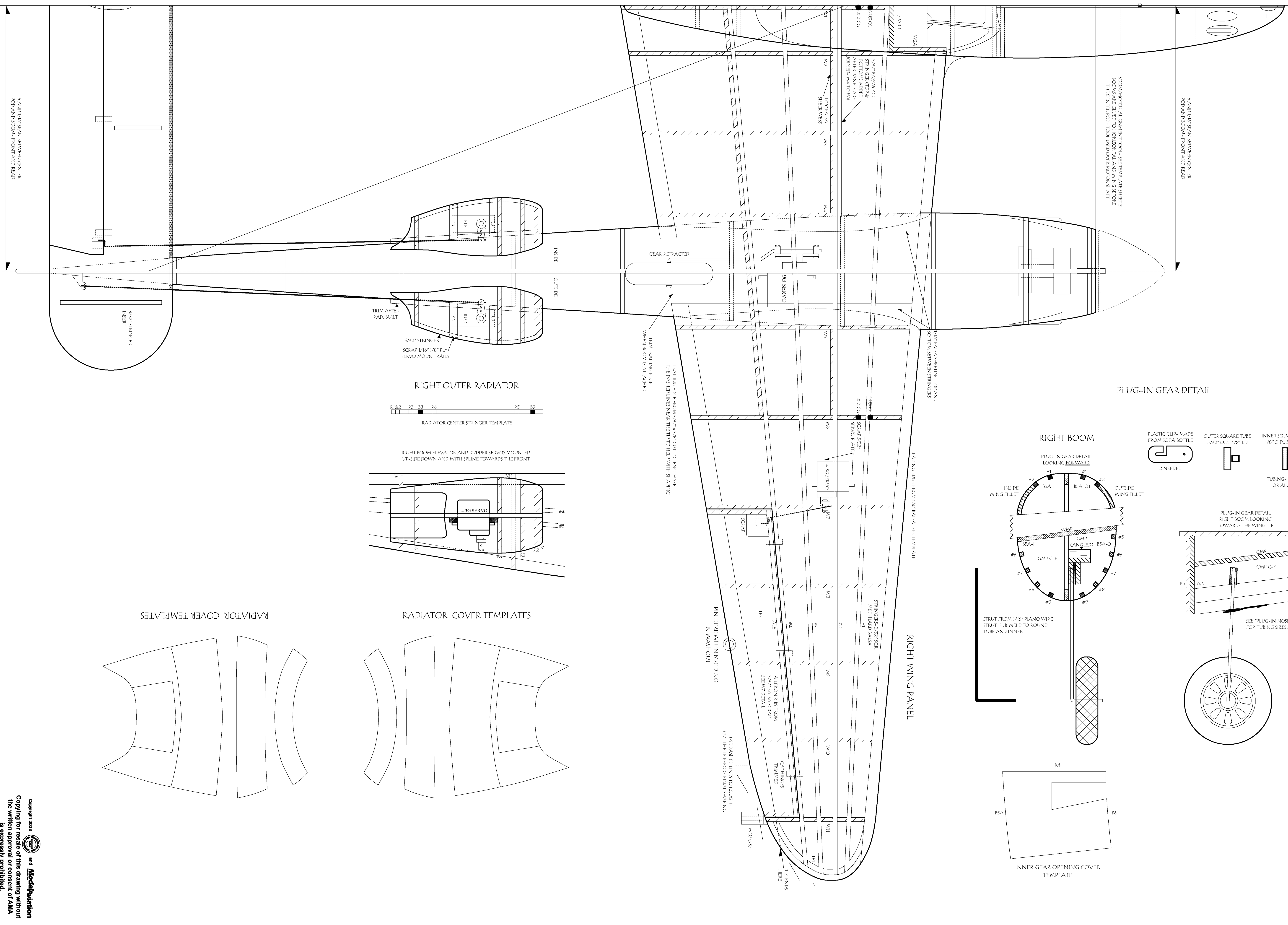
ROOM/MOTOR ALIGNMENT TOOL- SEE TEMPLATE SHEET 3 ROOMS ARE CLIPPED TO HORIZONTAL AND WING BEFORE THE CENTER POP- TOOL USED OVER MOTOR SHAFT

6 AND 1/16" SPAN BETWEEN CENTER POP AND ROOM- FRONT AND REAR

6 AND 1/16" SPAN BETWEEN CENTER POP AND ROOM- FRONT AND REAR



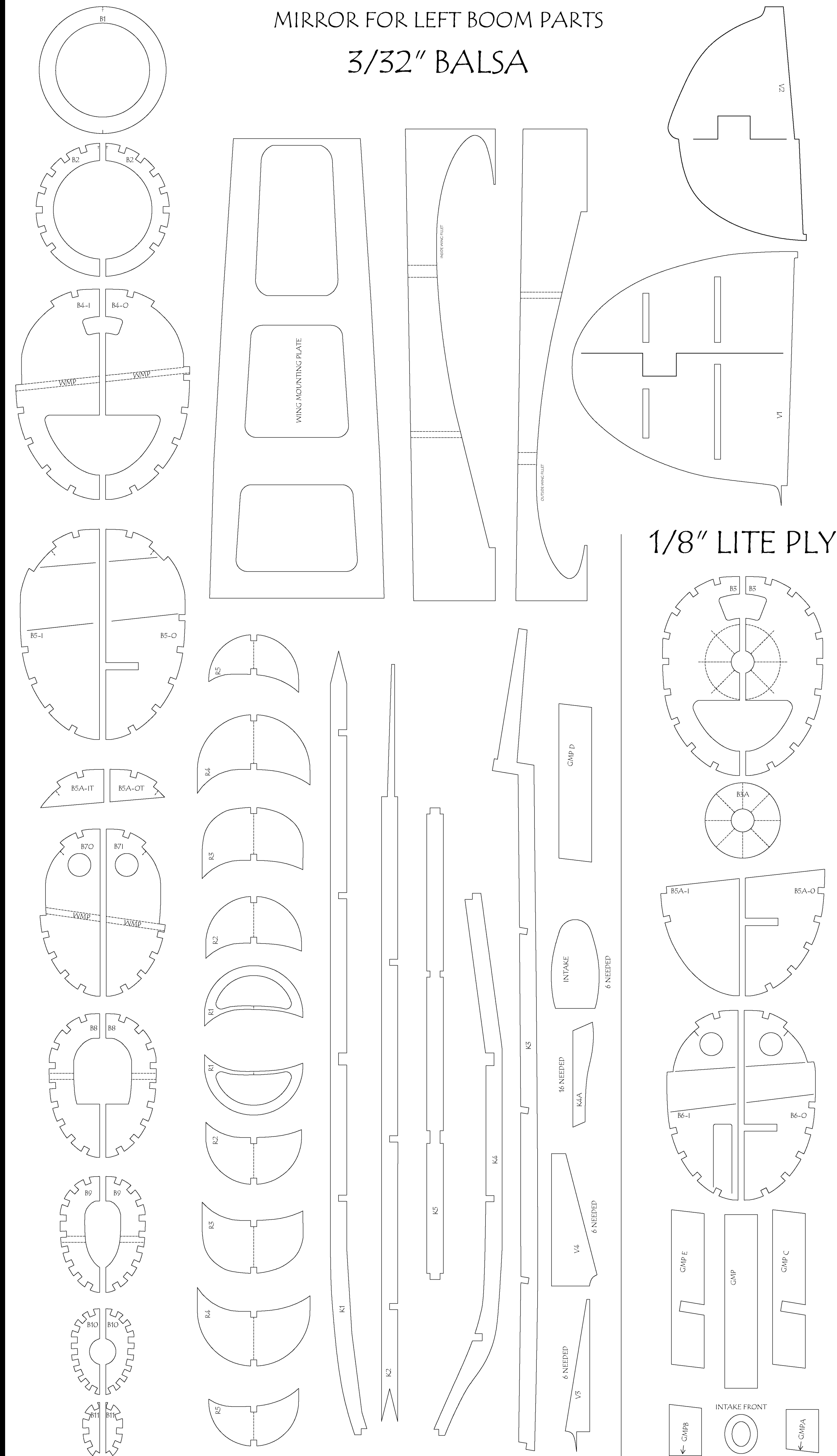
TRIM ALONG THIS LINE AND TAPE TO SHEET 4



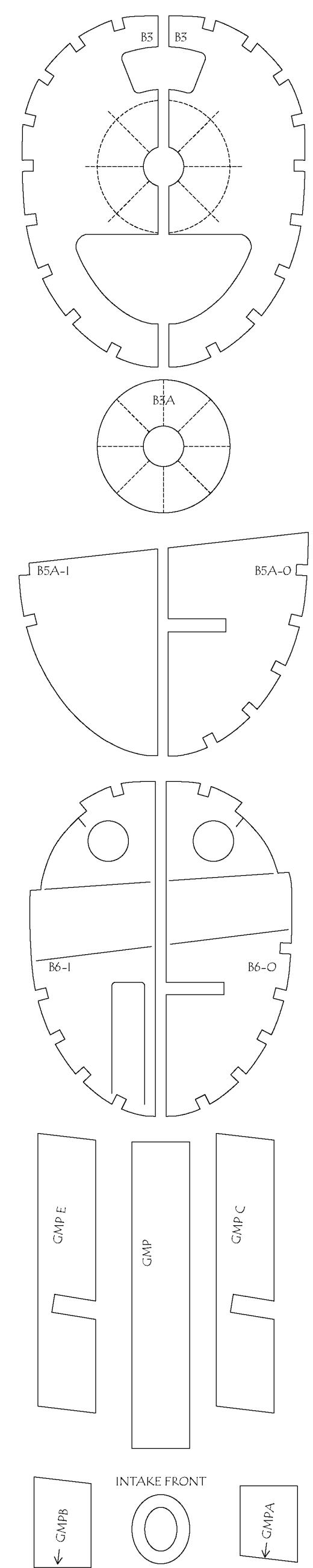
RIGHT BOOM

MIRROR FOR LEFT BOOM PARTS

3/32" BALS



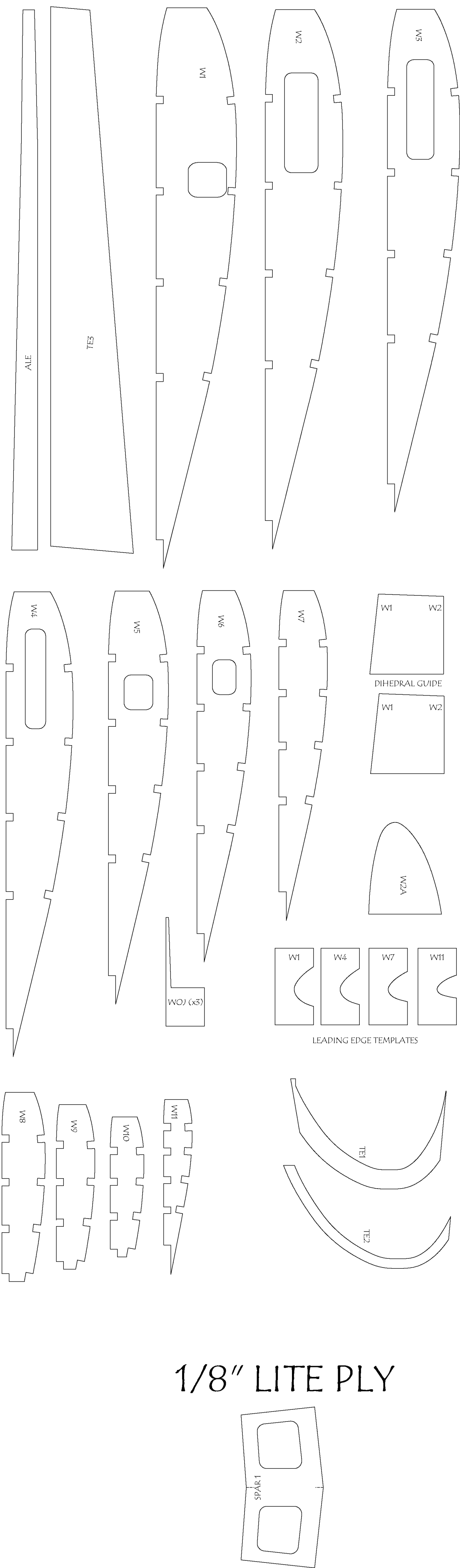
1/8" LITE PLY



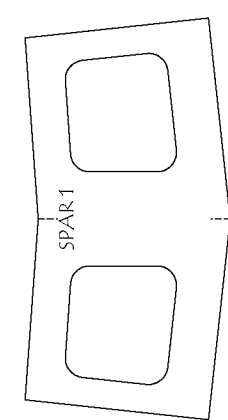
RIGHT WING PANEL

MIRROR FOR LEFT WING PARTS

3/32" BALS



1/8" LITE PLY

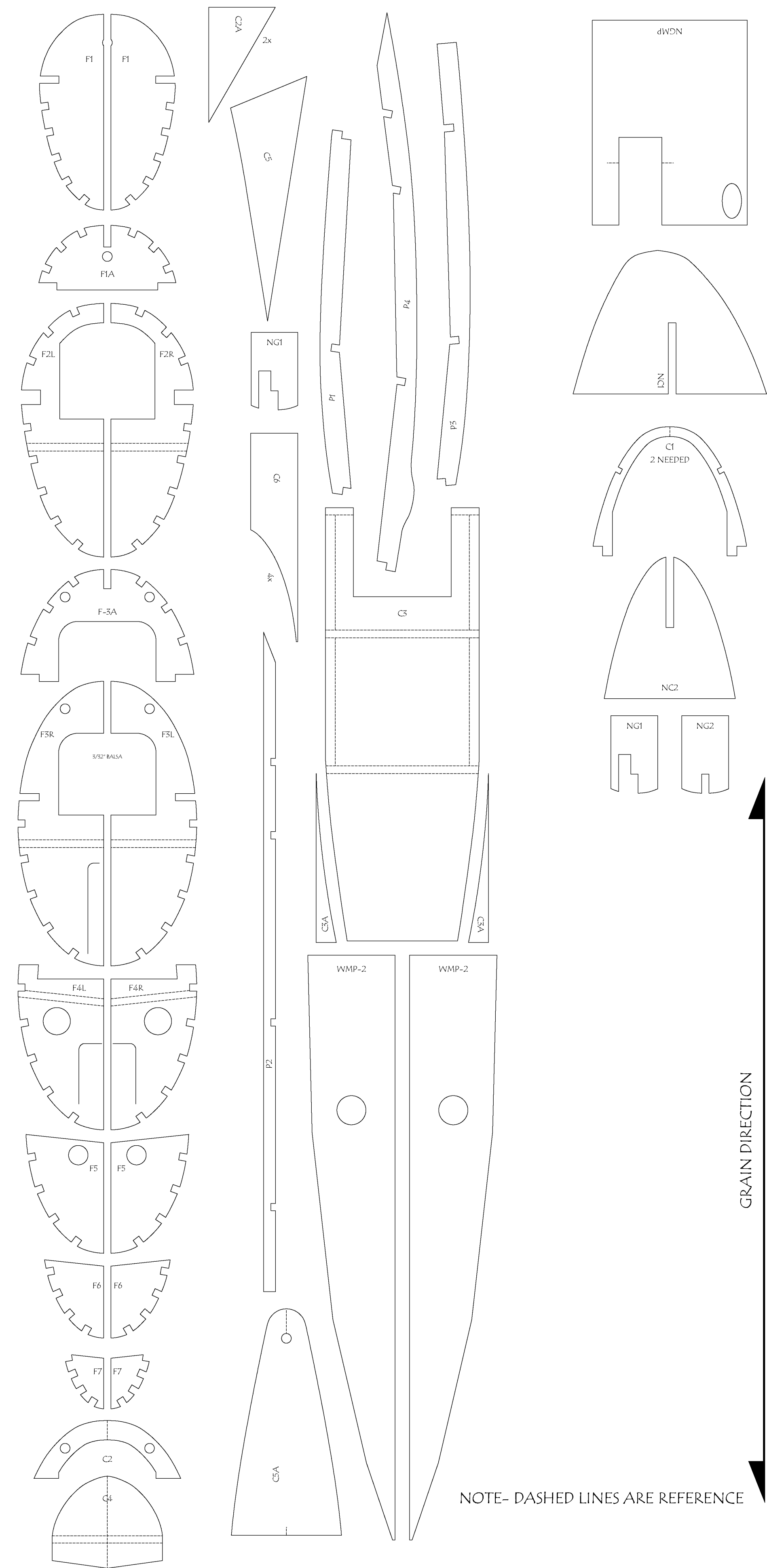


CENTER POD

3/32" BALS

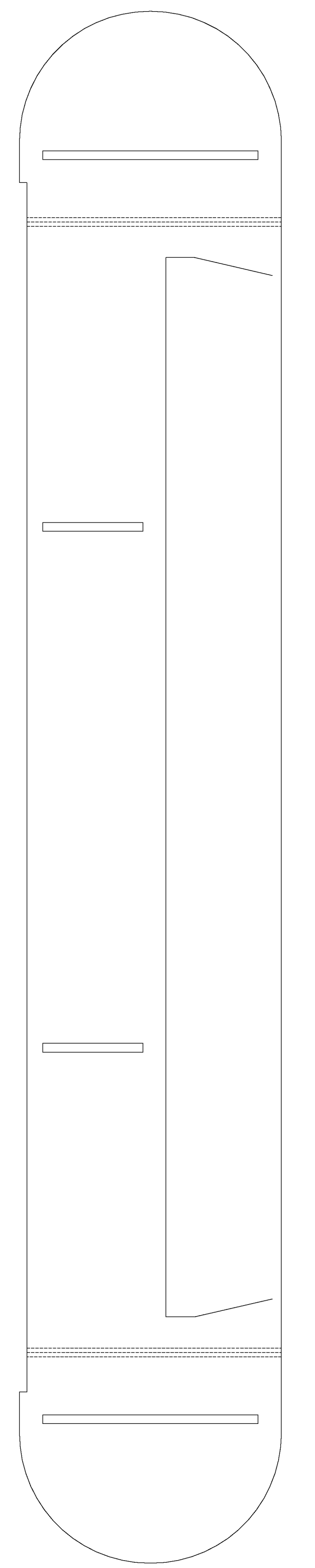
1/8" LITE PLY

3/32" BALS



GRAIN DIRECTION

NOTE- DASHED LINES ARE REFERENCE



P-38 F LIGHTNING
PARTS SHEET
DESIGNED BY DEREK MICKO-
40" WINGSPAN
10-12 OUNCES
CHANNELS: 5
MOTOR: 18-24 GRAM x2
ALL RIGHTS RESERVED
Plans No. 1138

Copyright 2013 Model Aviation
Copying for resale of this drawing without
the written approval or consent of AMA
is expressly prohibited.