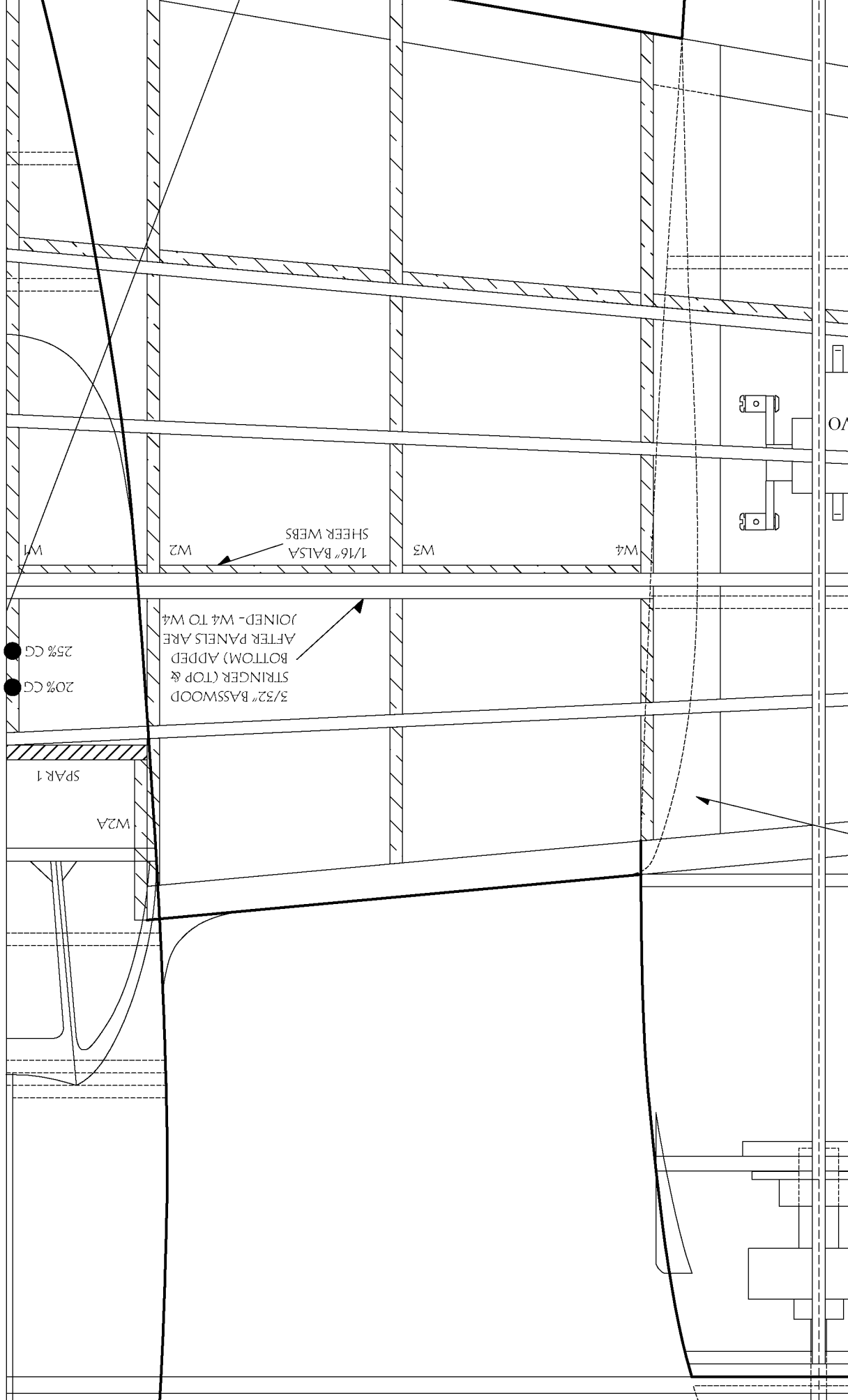
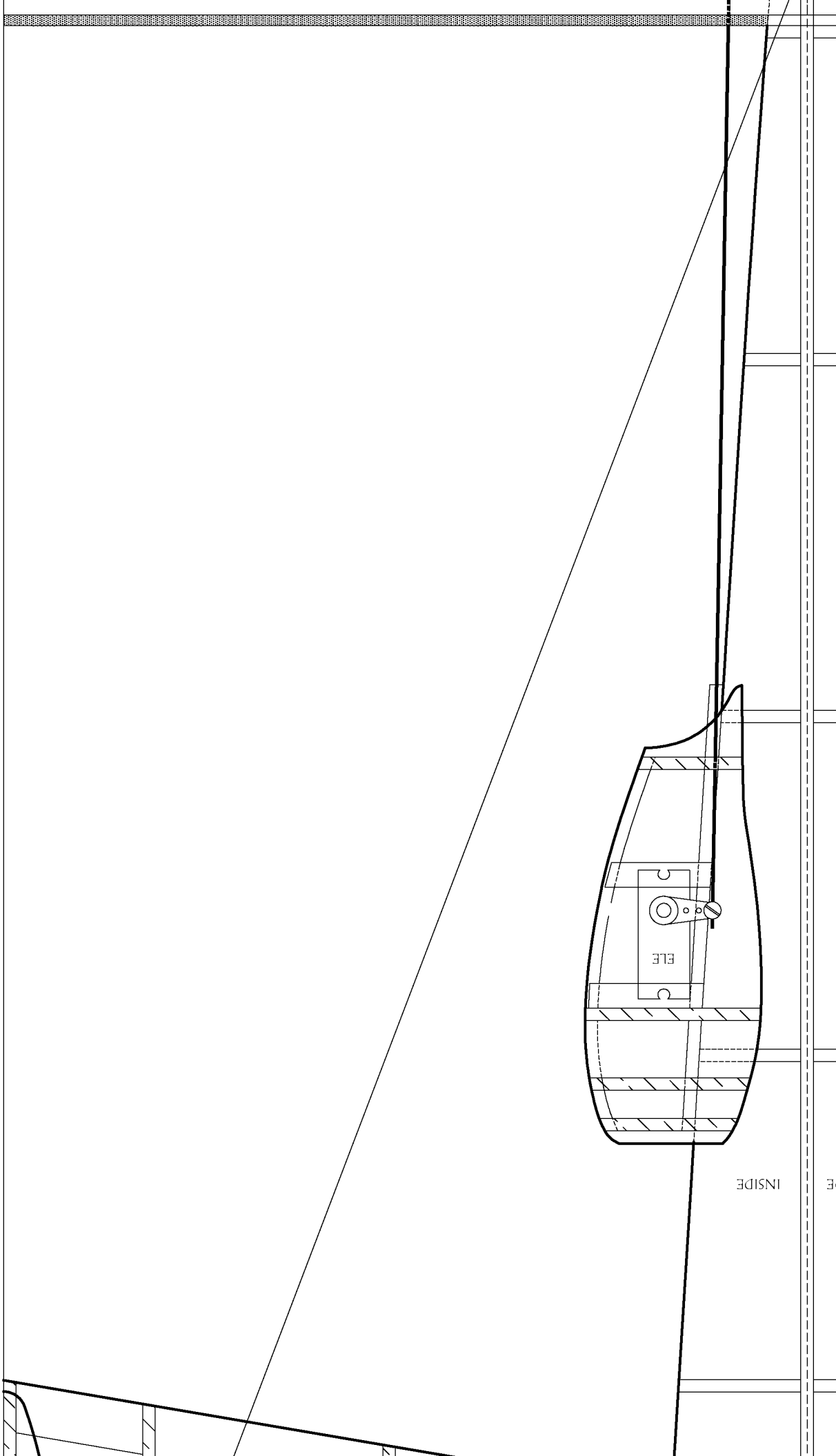


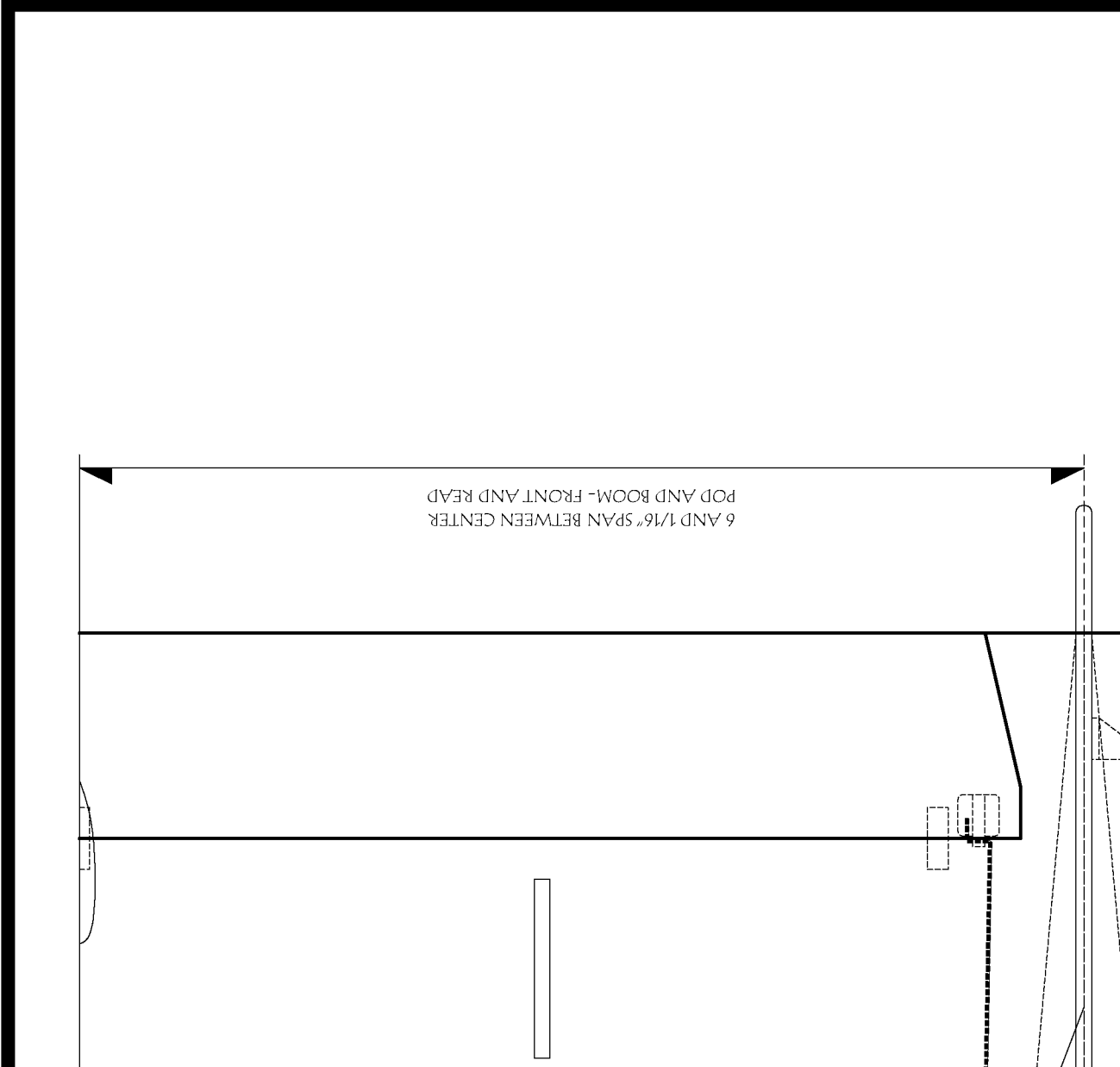
ROOM/MOTOR ALIGNMENT TOOL - SEE TEMPLATE SHEET 3  
ROOMS ARE GLUED TO HORIZONTAL AND WING BEFORE  
THE CENTER POD - TOOL USED OVER MOTOR SHAFT.

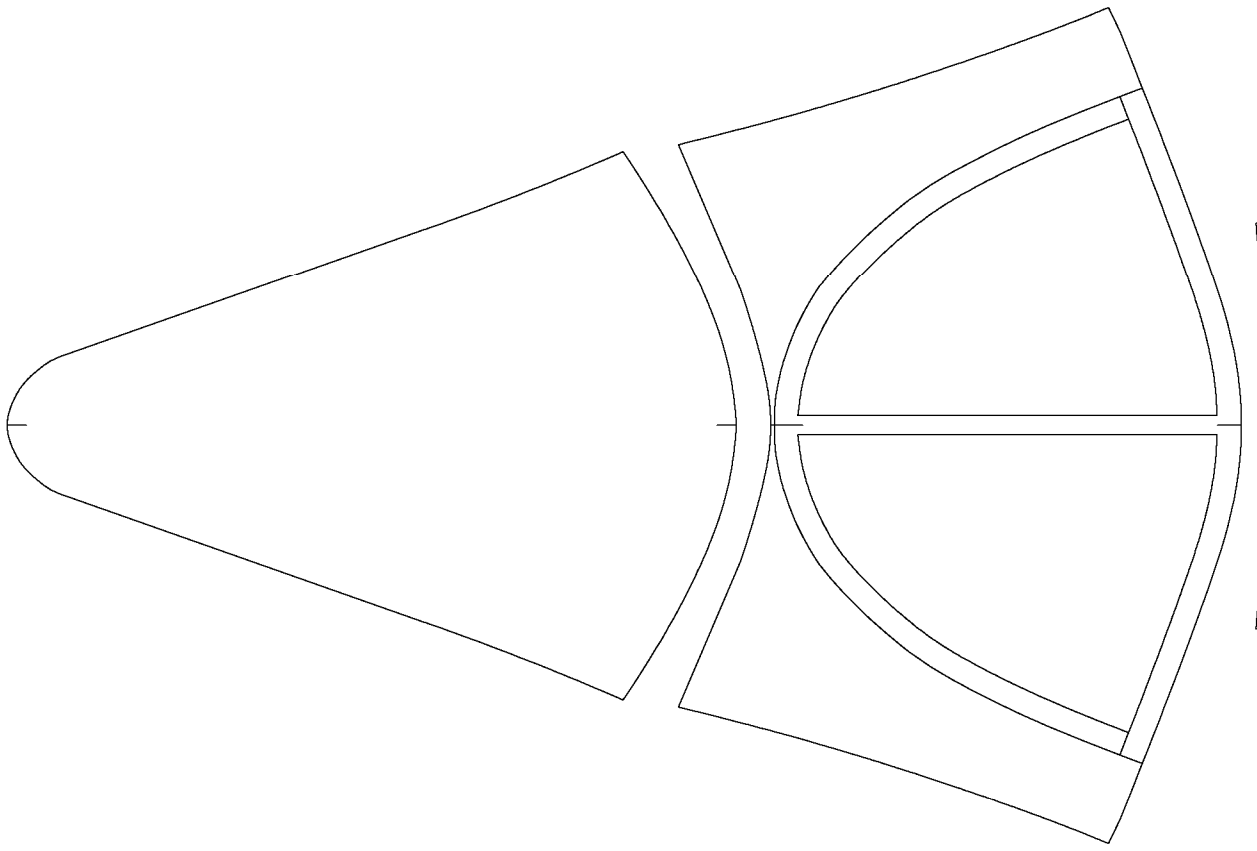


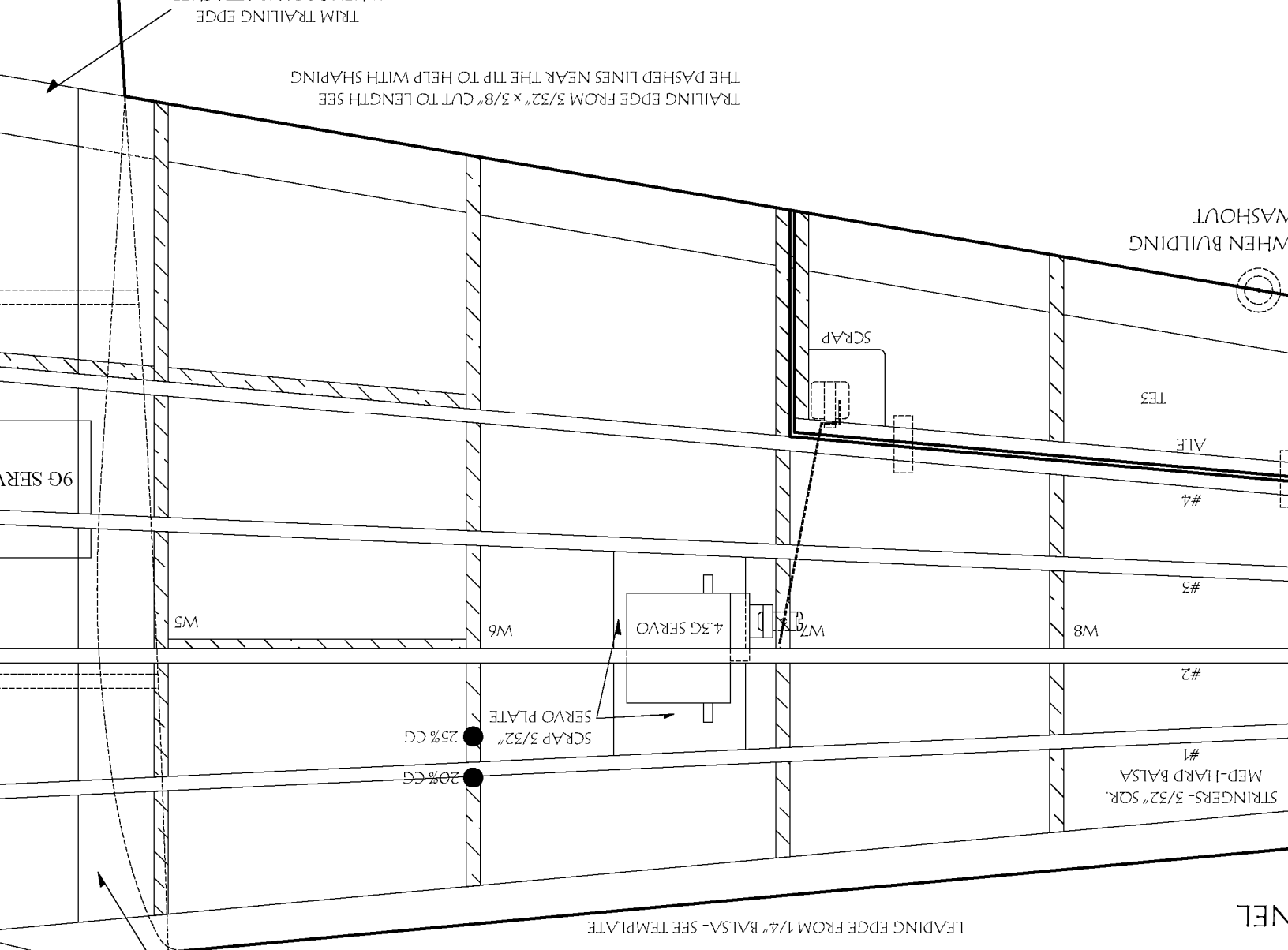


ELE

INSIDE

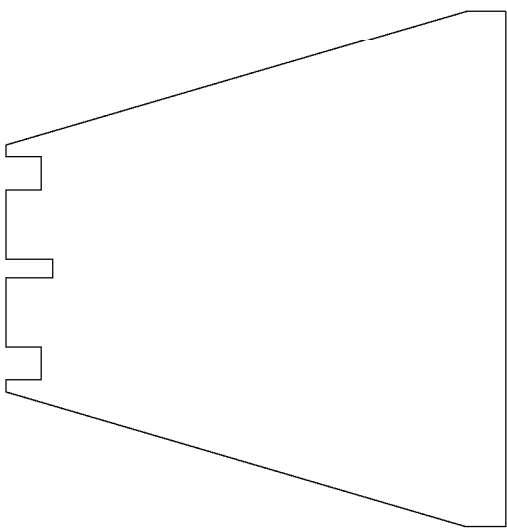




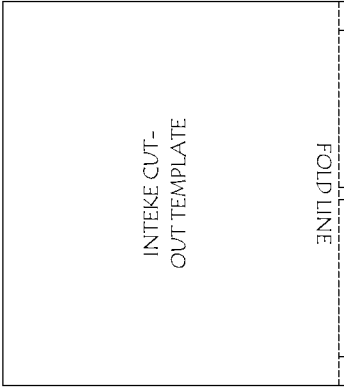


1/16" Balsa SHEETING TOP AND BOTTOM BETWEEN STRINGERS

LEADING EDGE FROM 1/4" Balsa- SEE TEMPLATE



CARDSTOCK DUCTING BETWEEN B3 AND B4- ADJUST AS NEEDED



INTEKE CUT-OUT TEMPLATE

FOLD LINE

TRIM TRAILING EDGE

TRAILING EDGE FROM 3/32" X 3/8" CUT TO LENGTH SEE THE DASHED LINES NEAR THE TIP TO HELP WITH SHAPING

WASHOUT

WHEN BUILDING

9G SERVO

#4

#3

#2

#1

STRINGERS- 3/32" SQ. MED-HARD BALS

W9

W8

W7

4.5G SERVO

W6

W5

20% CG

25% CG

SERVO PLATE

SCRAP

LEADING EDGE FROM 1/4" Balsa- SEE TEMPLATE

1/16" Balsa SHEETING TOP AND BOTTOM BETWEEN STRINGERS

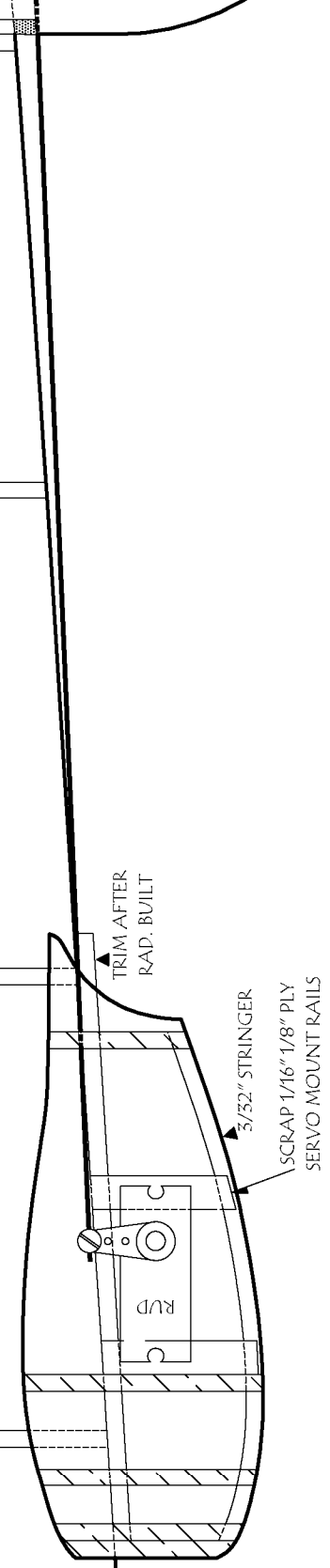
CARDSTOCK DUCTING BETWEEN B3 AND B4- ADJUST AS NEEDED

INTEKE CUT-OUT TEMPLATE

FOLD LINE

OUTSIDE

WHEN ROOM IS ATTACHED

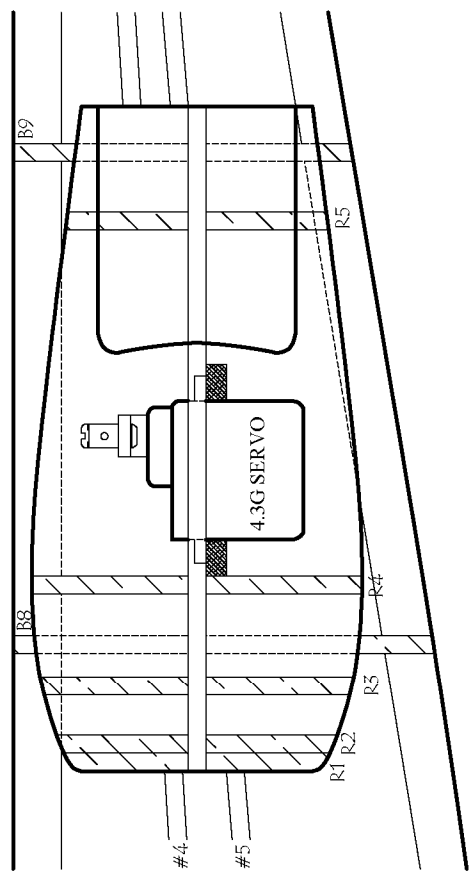


### LEFT OUTER RADIATOR



RADIATOR CENTER STRINGER TEMPLATE

LEFT BOOM ELEVATOR AND RUDDER SERVOS MOUNTED  
RIGHT SIDE UP AND WITH SPLINE TOWARDS THE REAR



### RADIATOR COVER TEMPLATES

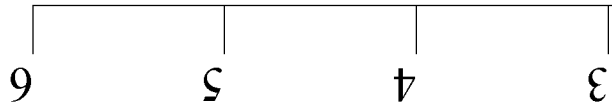
### RADIATOR COVER TEMP



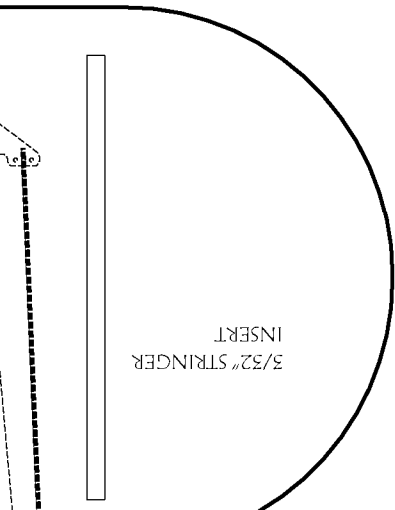
LATES

CONTROL THROWS:  
AILERONS +- 3/8" - 1/2"  
ELEVATOR +- 1/2"  
RUDDER +- 1/2"

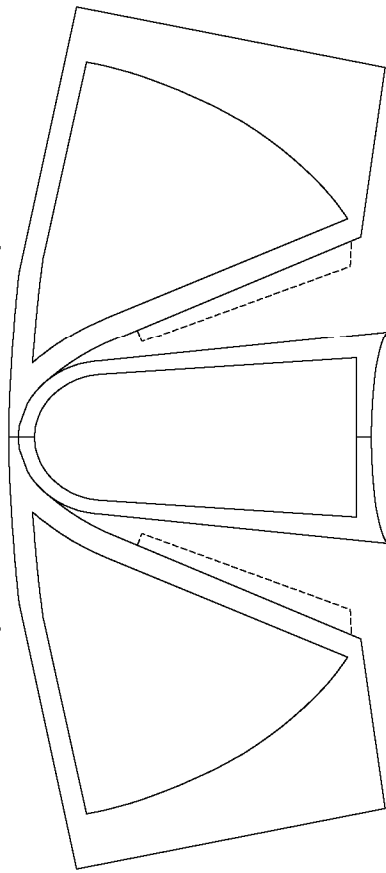
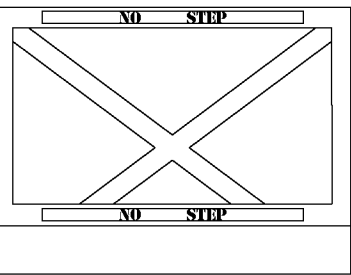
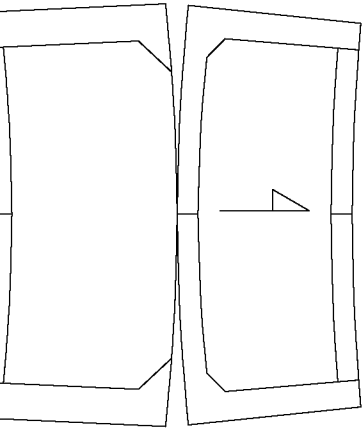
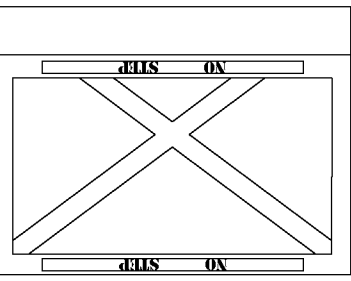
POWER: TWO (2) 24g 1700 KV BL MOTORS  
TWO (2) 12-15 AMP ESCS  
2S 900-1100 MAH LIPO  
TWO (2) 8" x 4.5" 3-BLADE PROPELLER



3/32" STRINGER  
INSERT

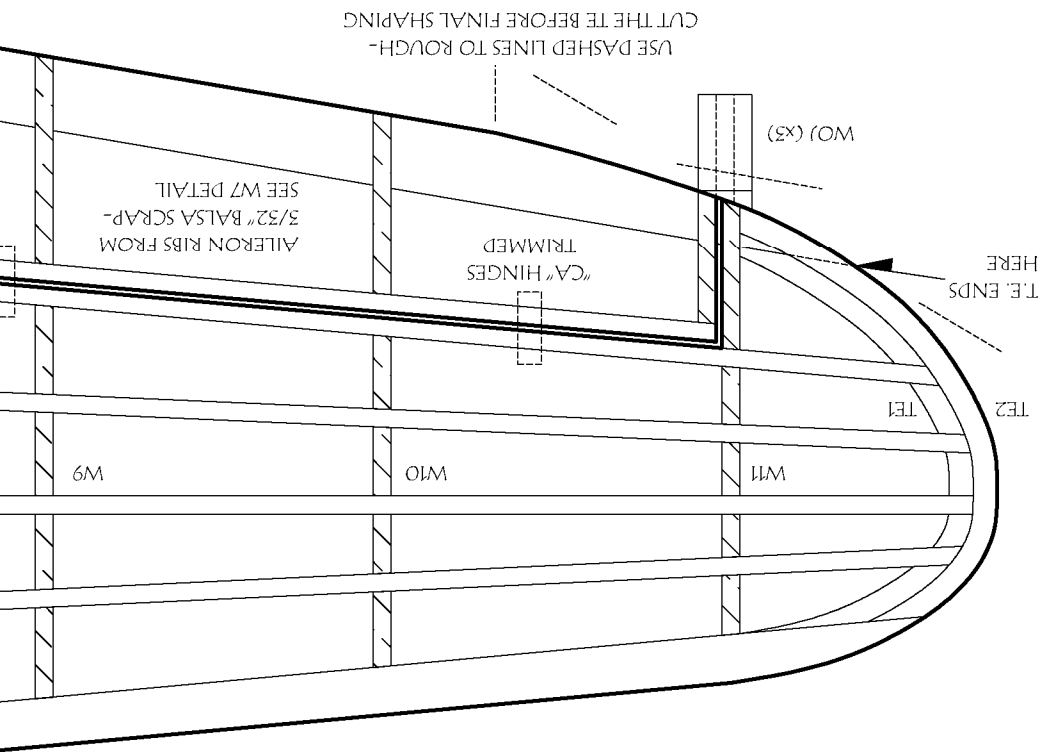






CANOPY TEMPLATES

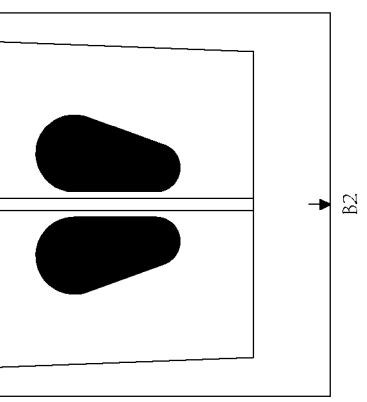
PIN HERE V  
IN V



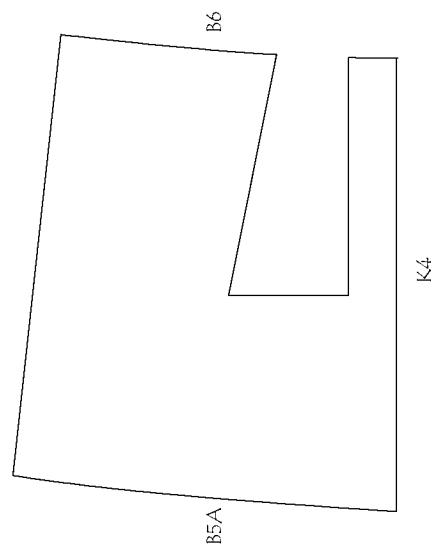
USE DASHED LINES TO ROUGH-  
CUT THE TE BEFORE FINAL SHAPING

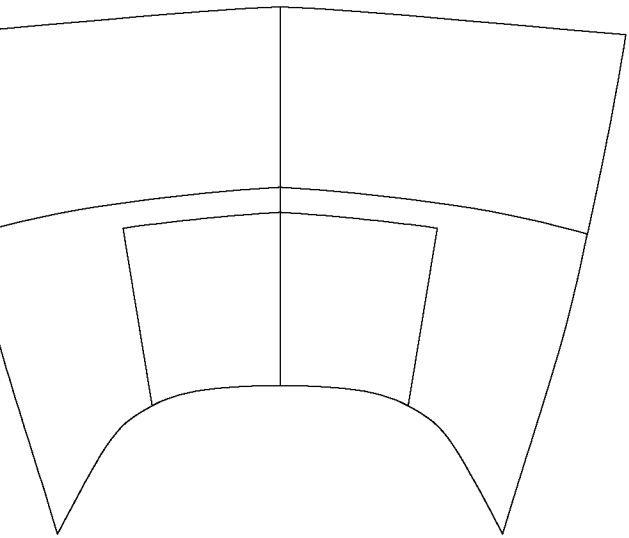
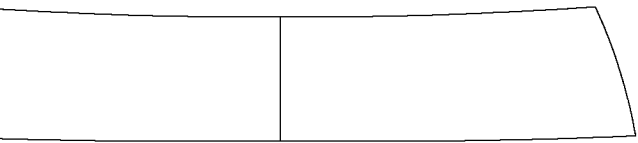
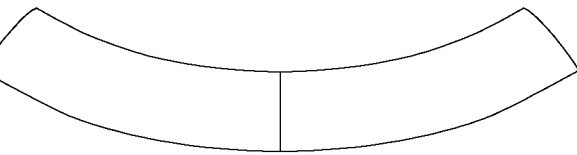
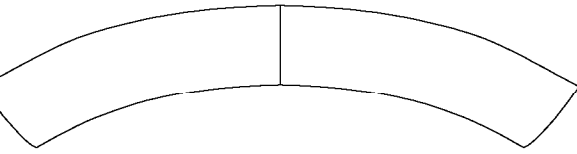
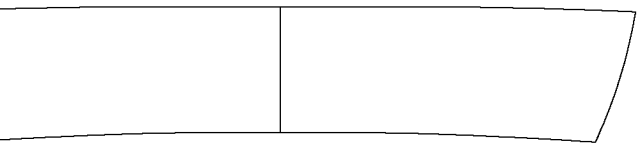
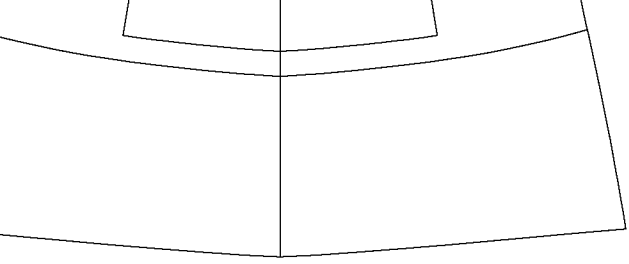
T.E. ENDS  
HERE

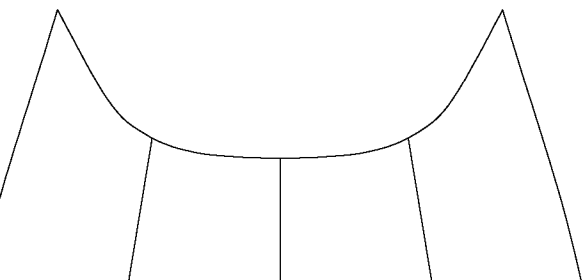
LEFT WING PAN




INNER GEAR OPENING COVER  
TEMPLATE







Copyright 2023  and **ModelAviation**

Copying for resale of this drawing without the written approval or consent of AMA is expressly prohibited.

# P-38 F LIGHTNING

DESIGNED BY DEREK WICKO-

40" WINGSPAN

10-12 OUNCES

CHANNELS: 5

MOTOR: 18-24 GRAM x2

ALL RIGHTS RESERVED

Plans No. 1138

SHEET 4  
ARCH D 24" x 36"

0

1

2

FOR CONSTRUCTION DETAILS SEE "P-38  
BUILD AND COVERING INSTRUCTIONS"