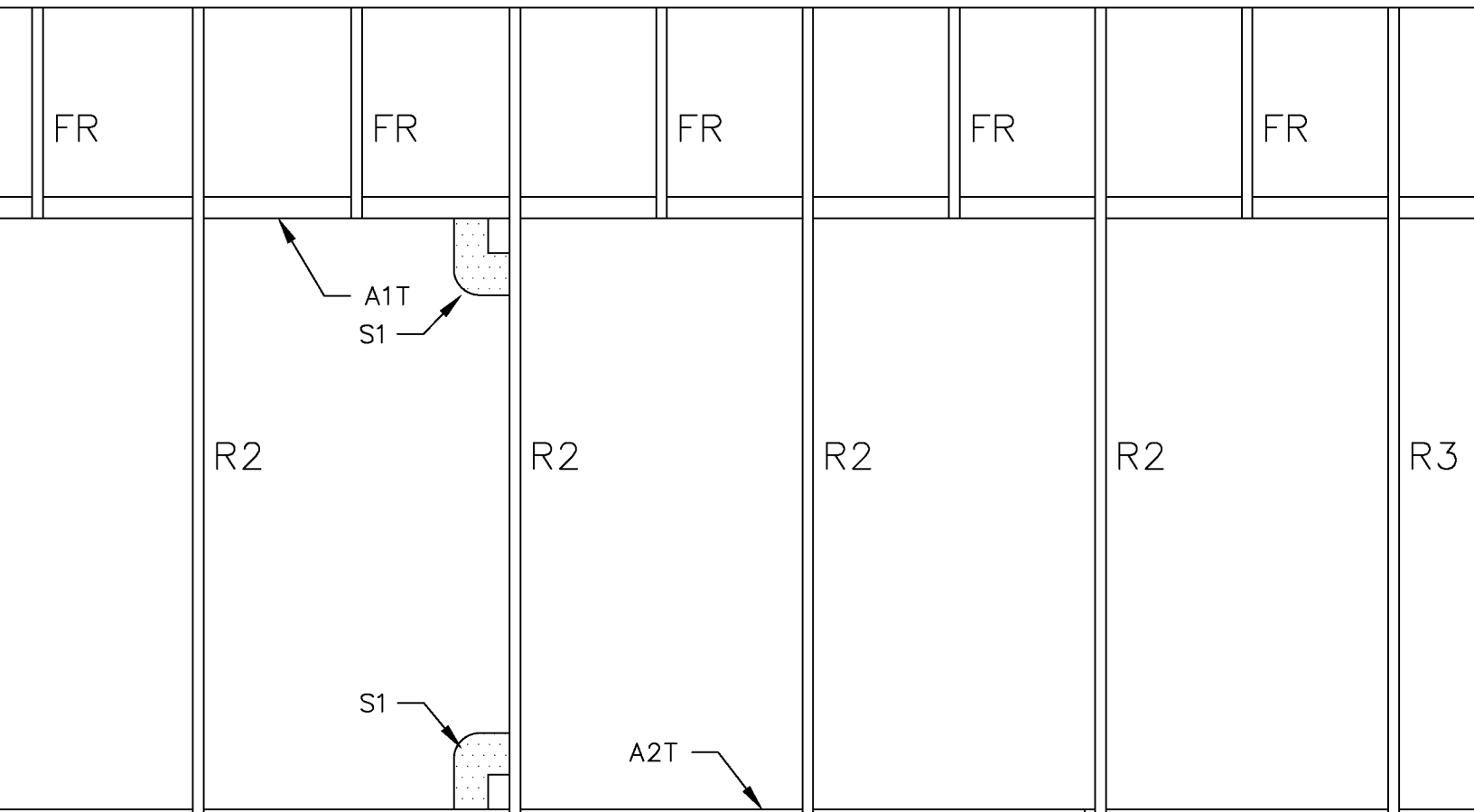
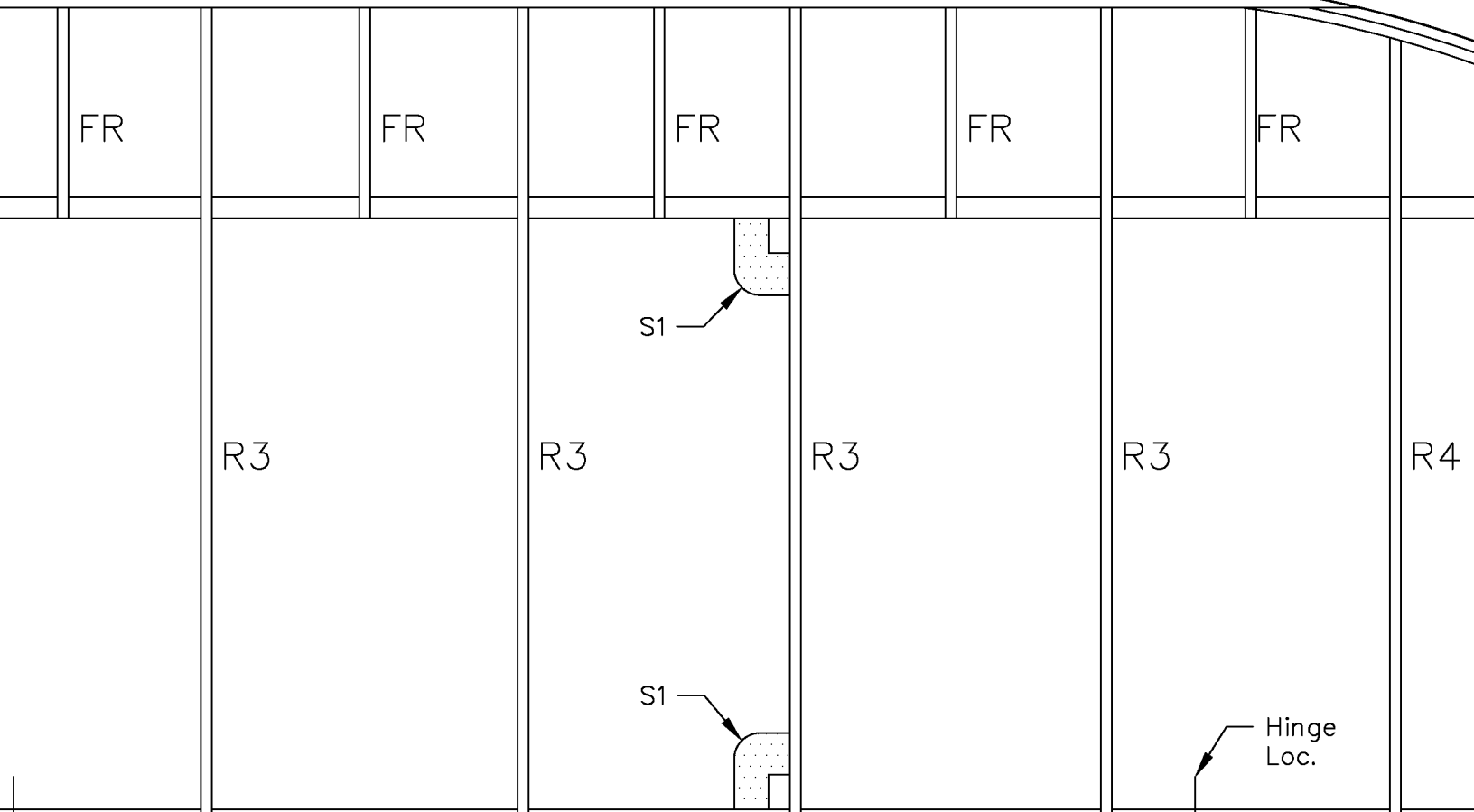
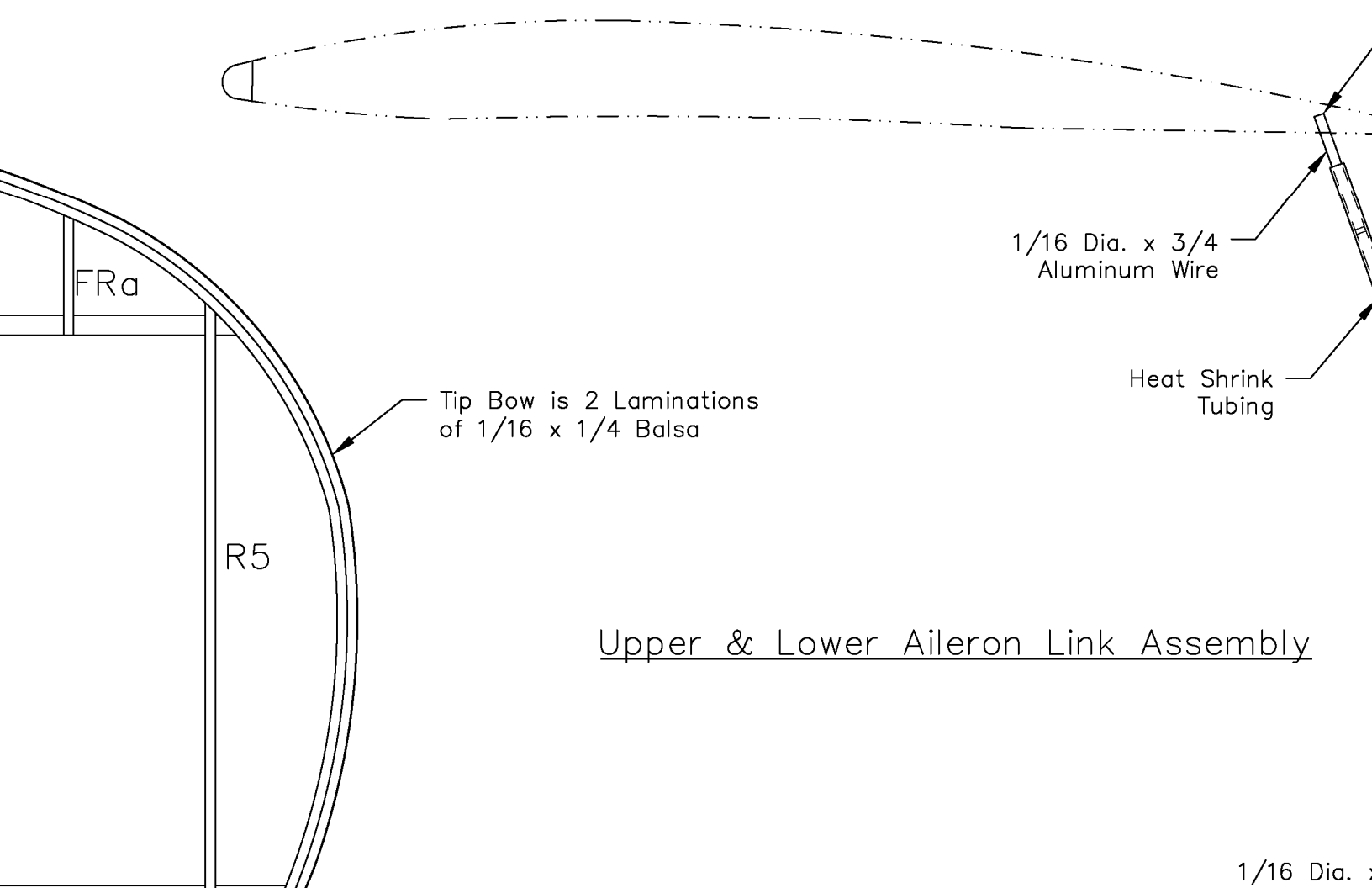


1/4 Sq. Balsa







FRa

R5

Tip Bow is 2 Laminations
of 1/16 x 1/4 Balsa

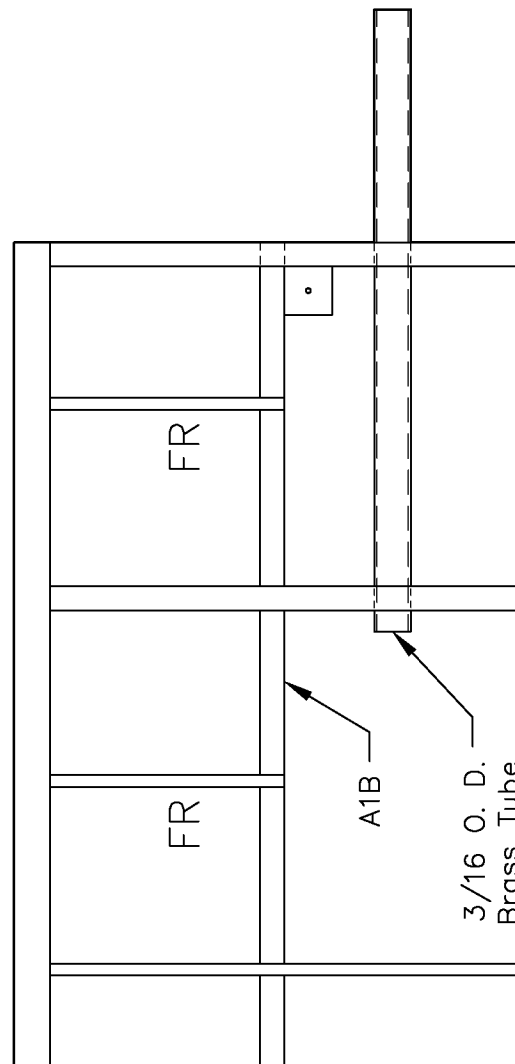
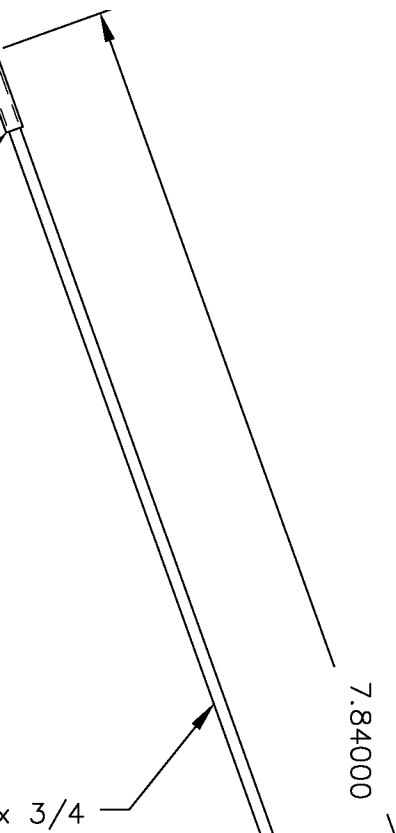
1/16 Dia. x 3/4
Aluminum Wire

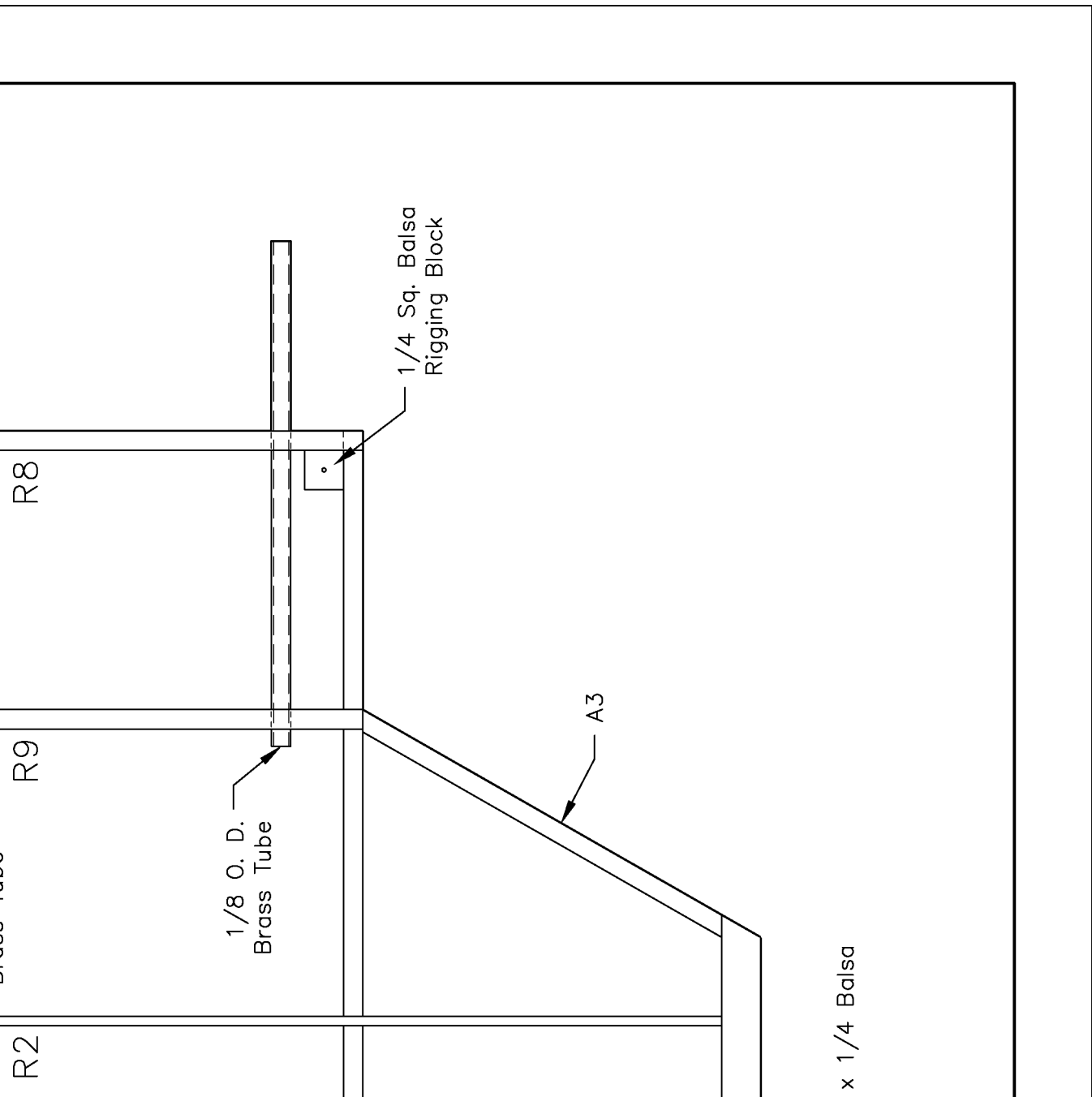
Heat Shrink
Tubing

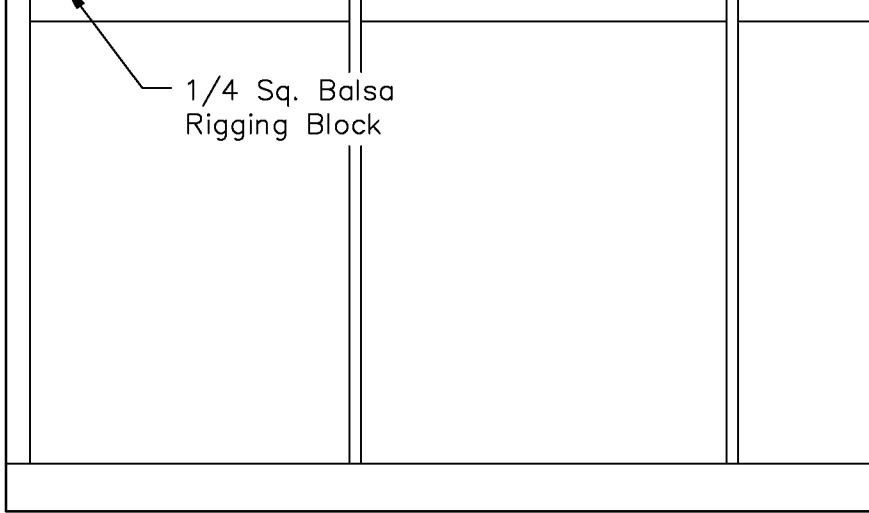
Upper & Lower Aileron Link Assembly

1/16 Dia. x

Glue Into ALT

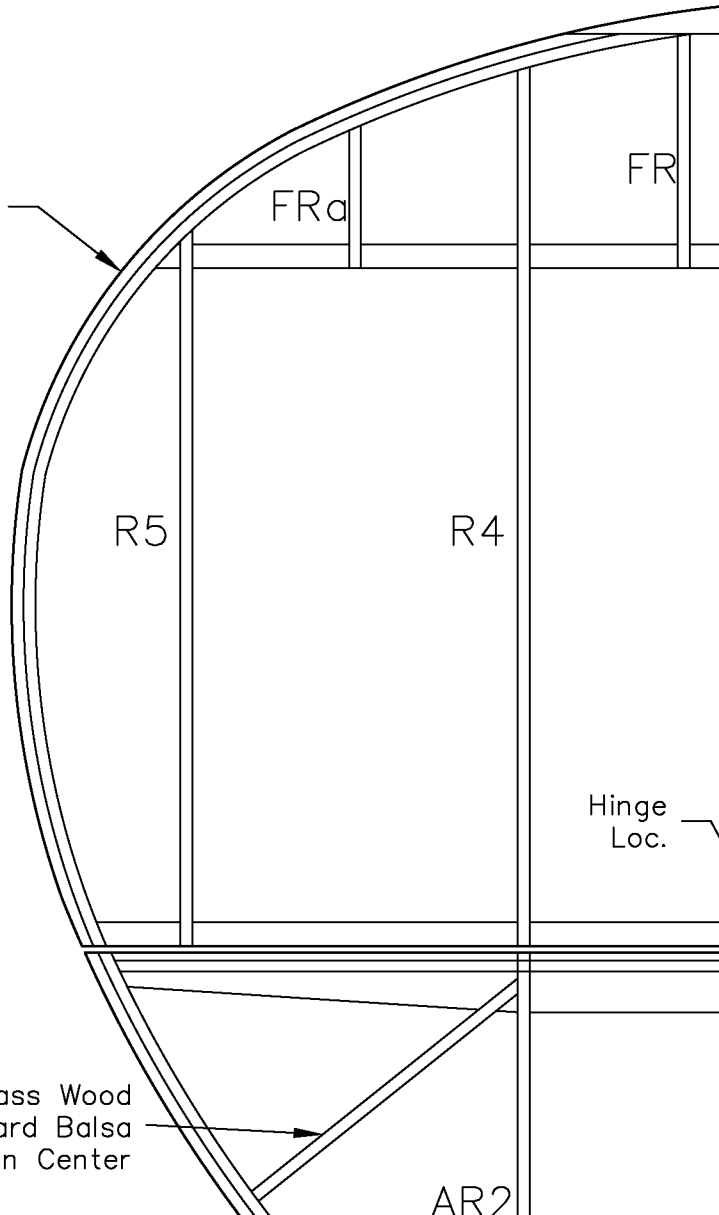




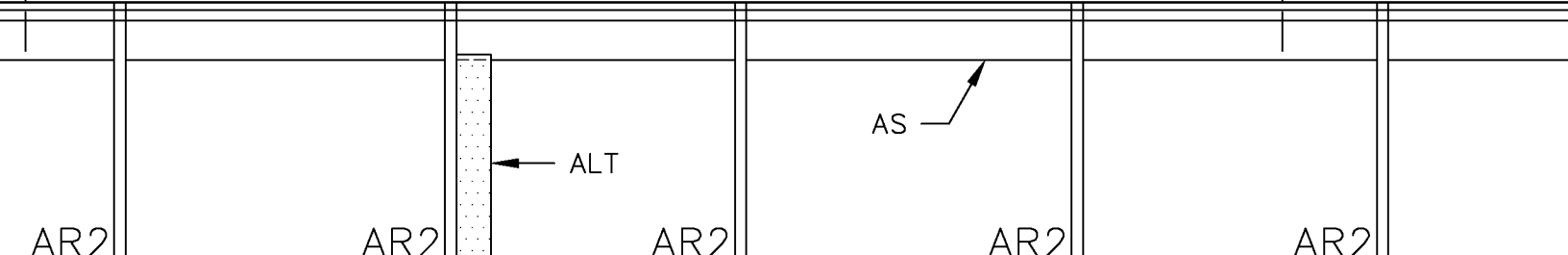
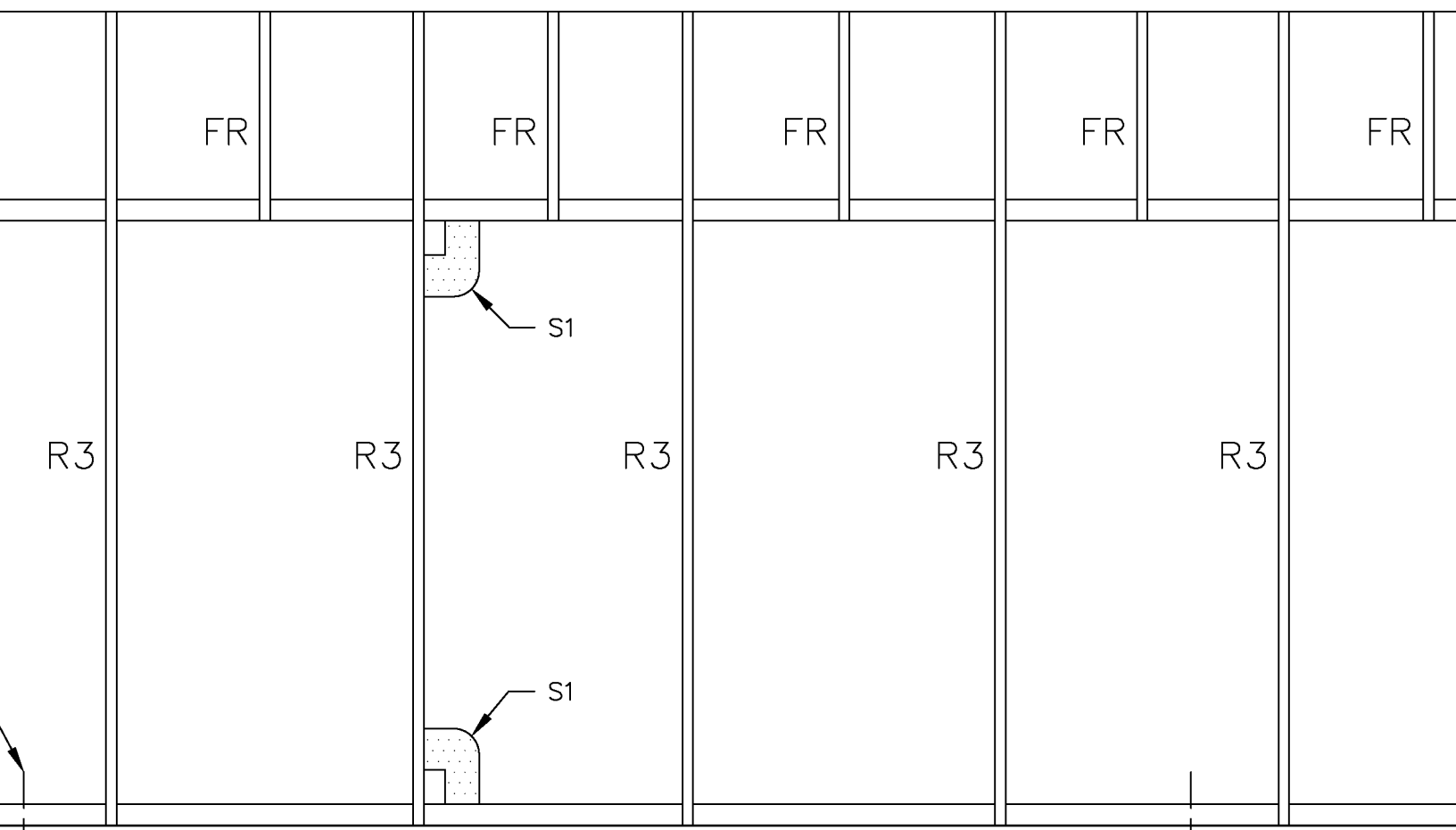
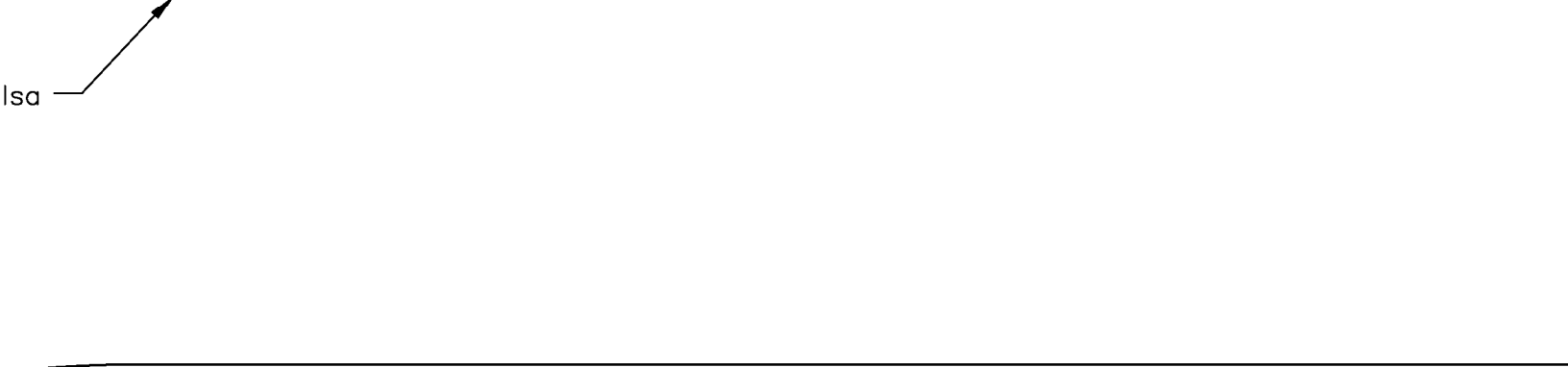
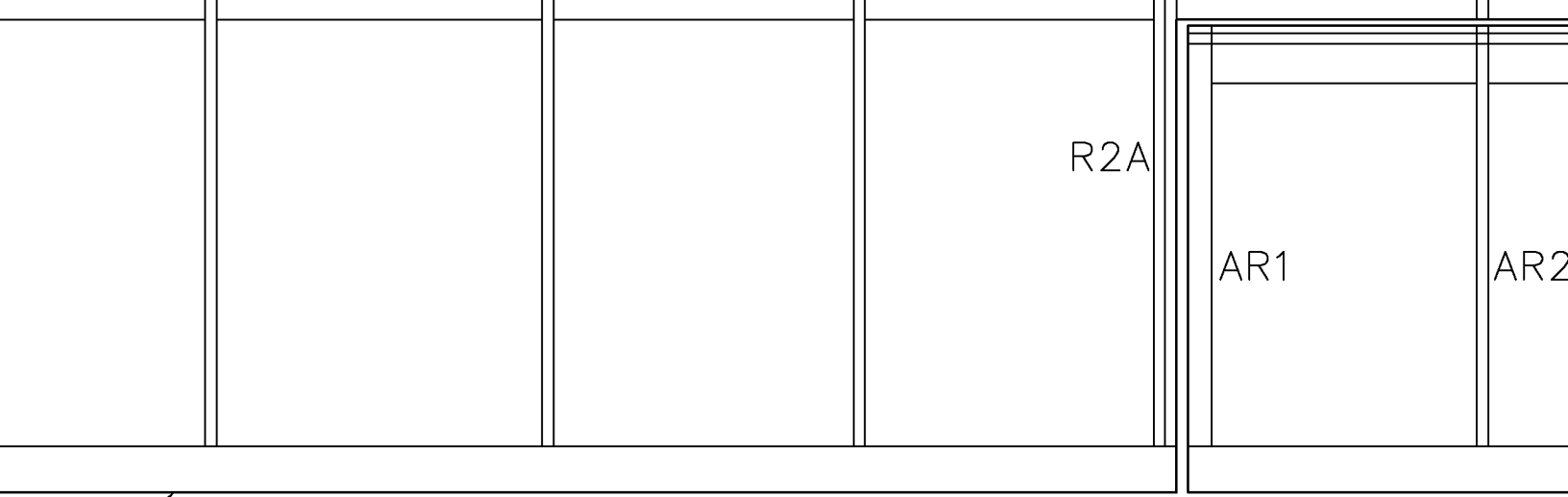


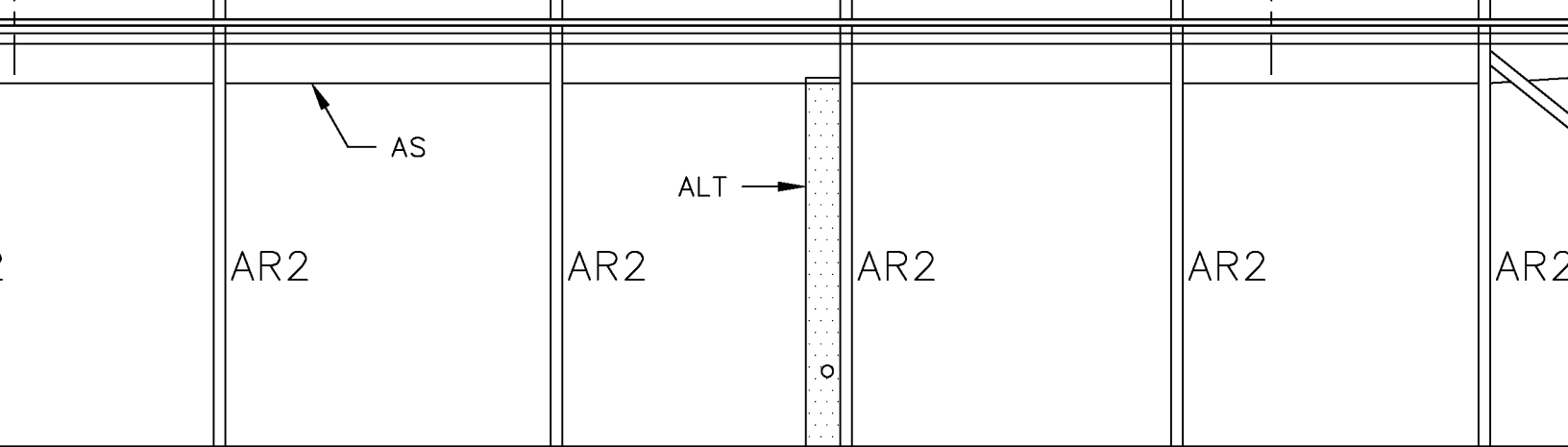
3/32 x 1/4 Ba

Tip Bow is 2 Laminations
of 1/16 x 1/4 Balsa



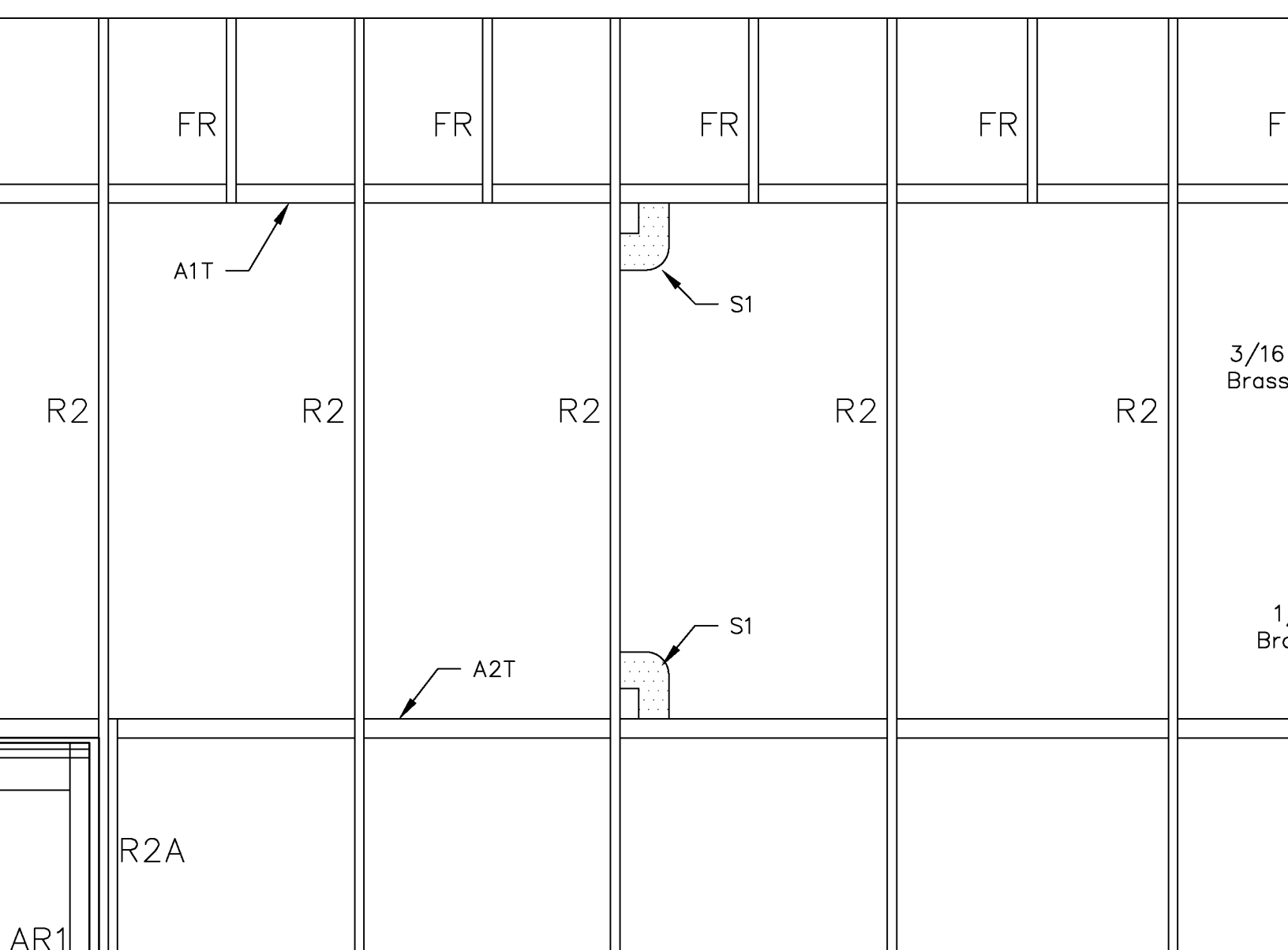
1/16 Sq. Bass Wood
or Hard Balsa
Glue in on Center

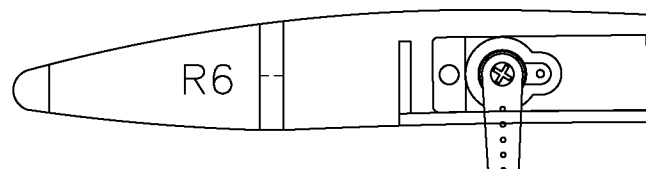
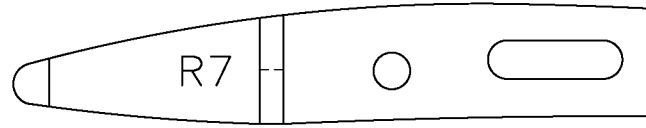
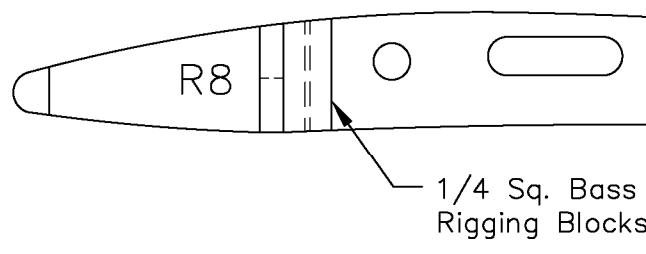
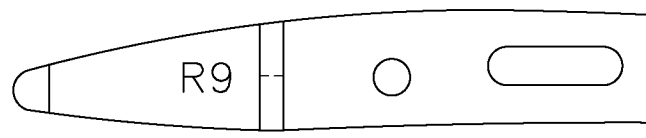
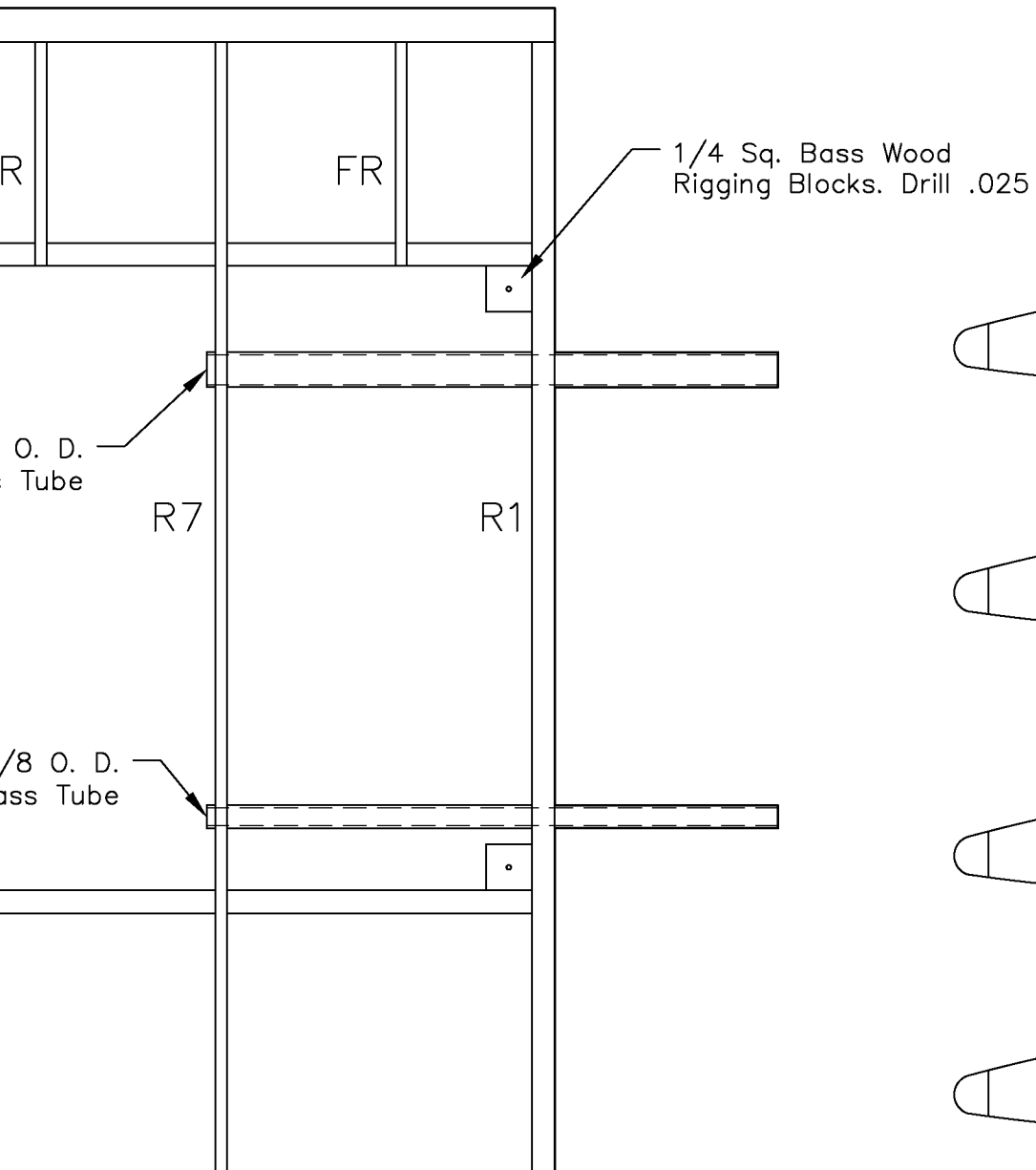
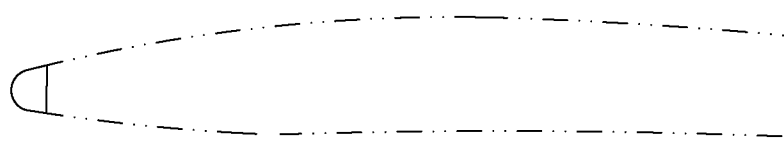
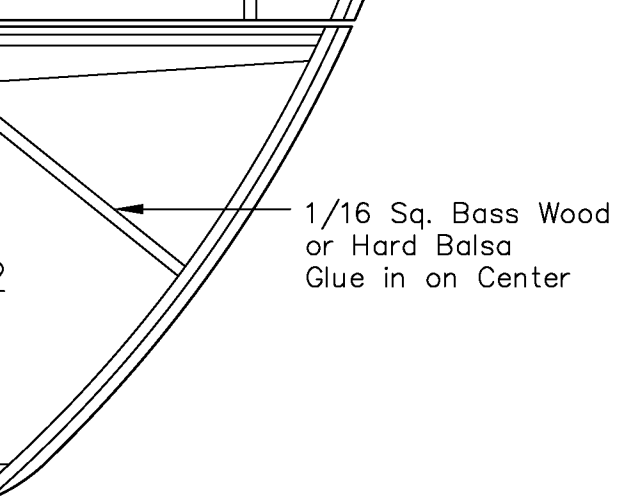




3/32 x 1/4 Balsa

1/4 Sq. Balsa



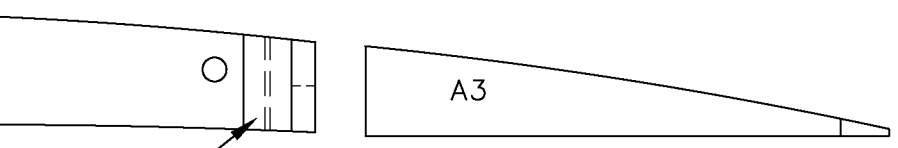
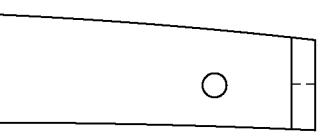


Wire

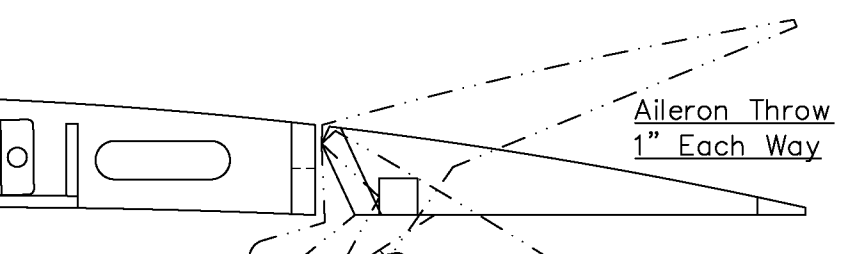
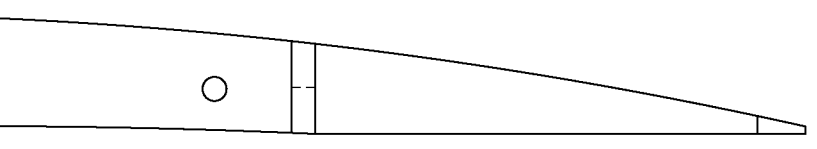
Heat Shrink Tubing

1/16 Dia. x 3/4 Aluminum Wire

Glue into ALB

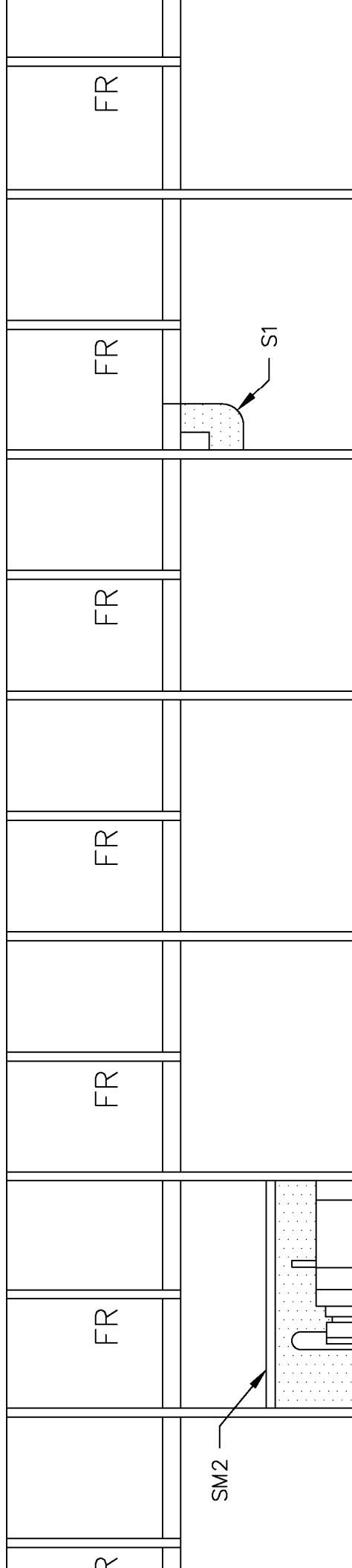


Wood



Aileron Throw
1" Each Way

1/4 Sq. Balsa



FR

FR

FR

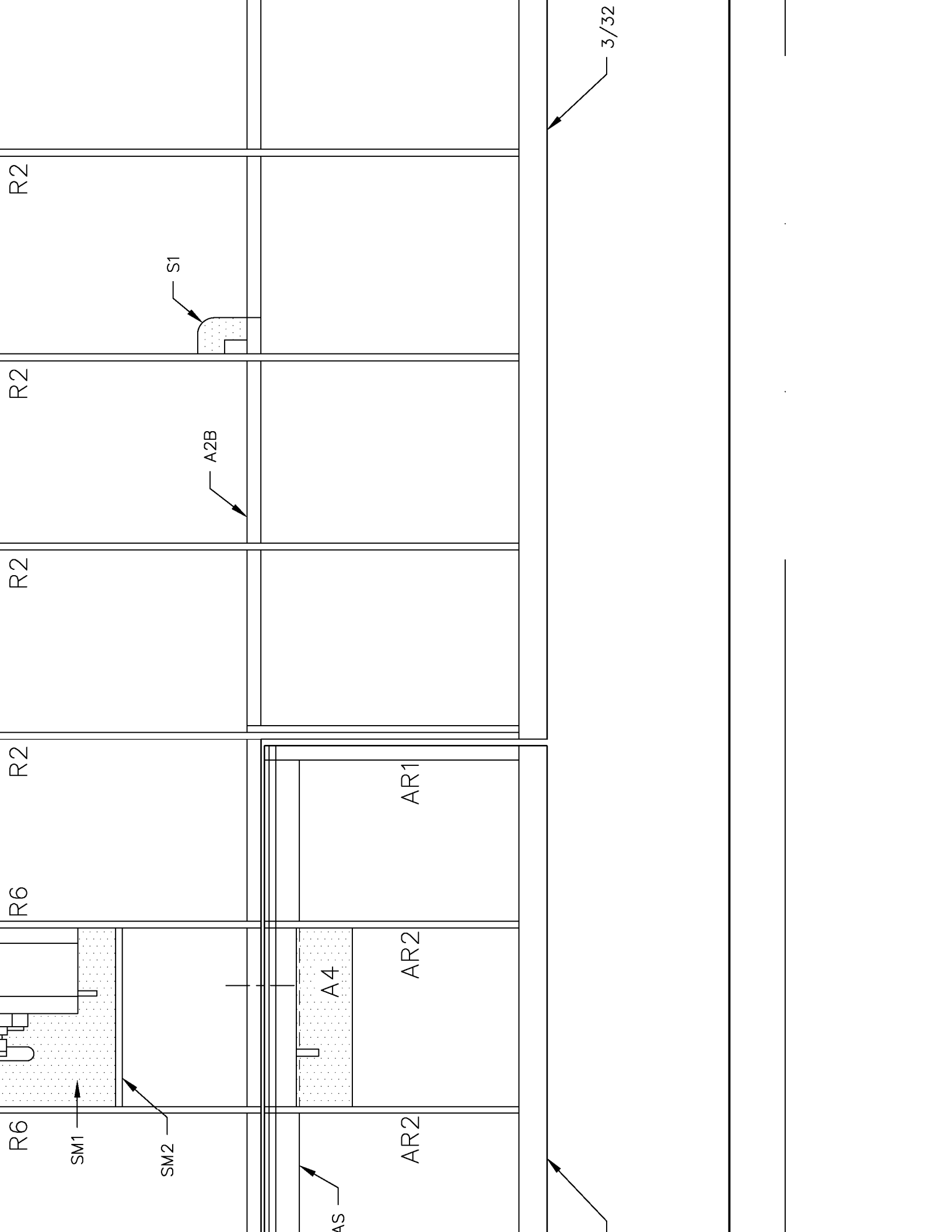
FR

FR

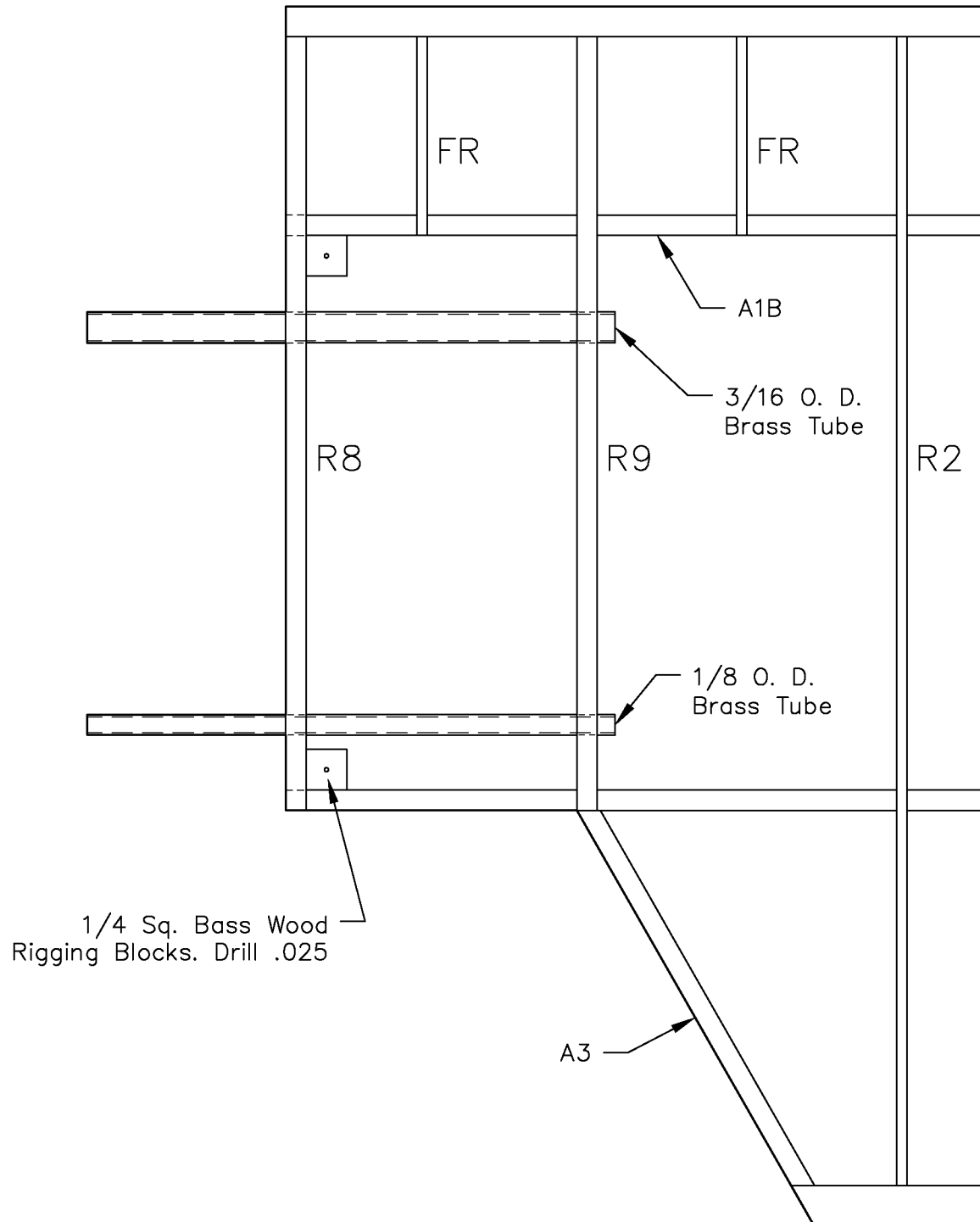
FR

SM2

S1



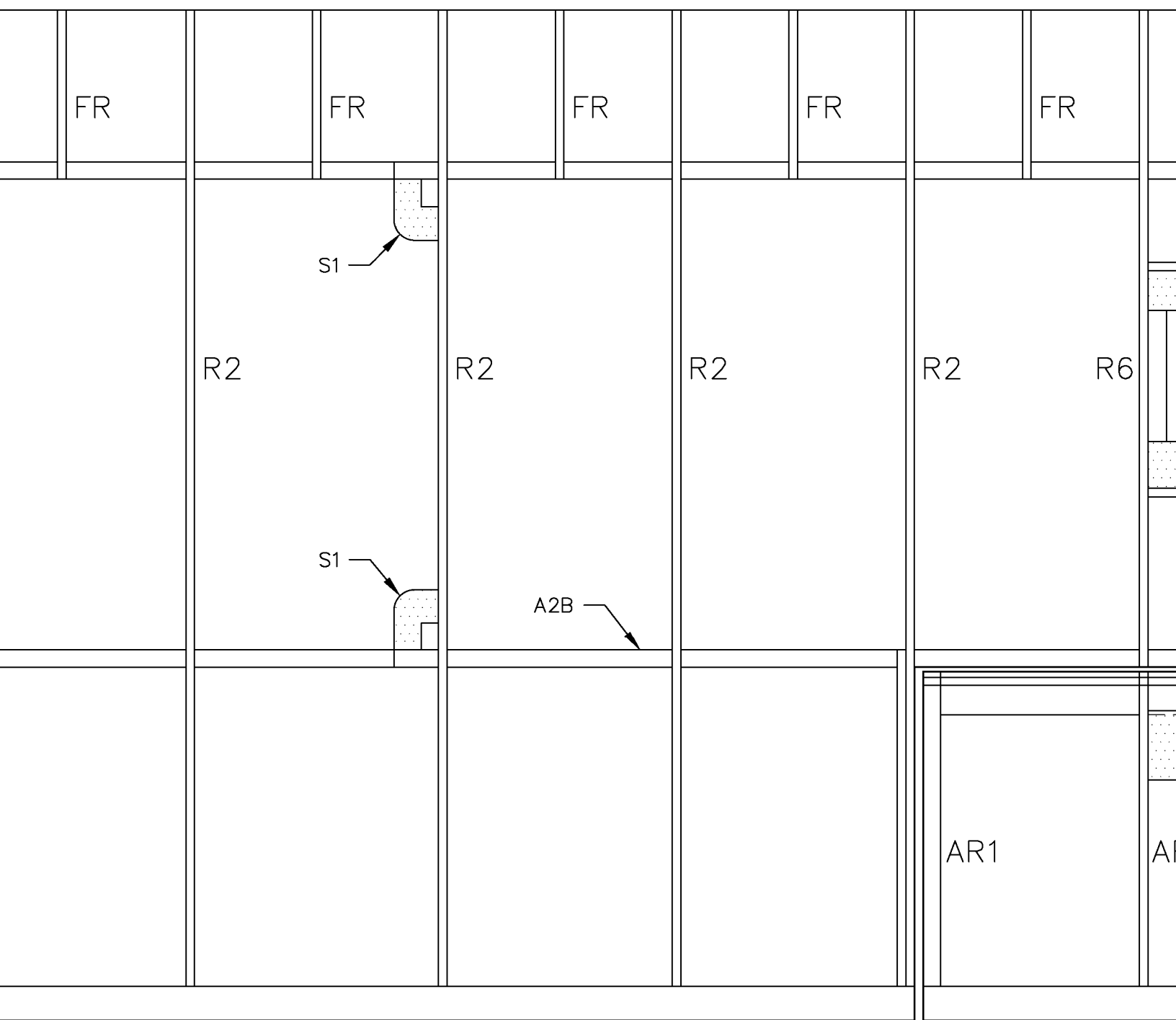
Aileron Hinge Cutting Pattern
Make from Light Cya Hinge Stock



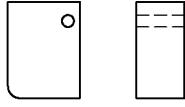
ern
k 8 Req.

3/32 x 1/4 Balsa

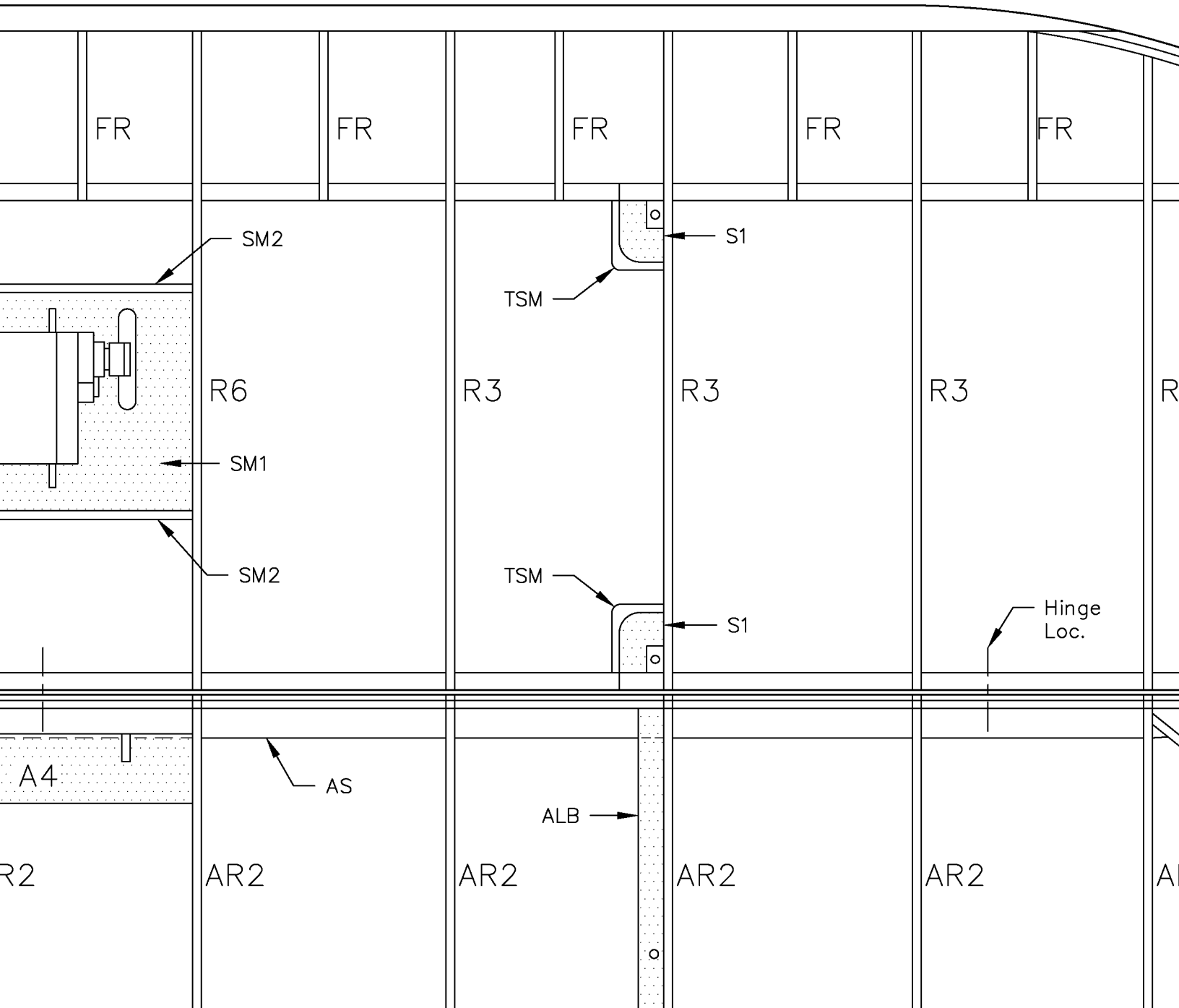
1/4 Sq. Balsa

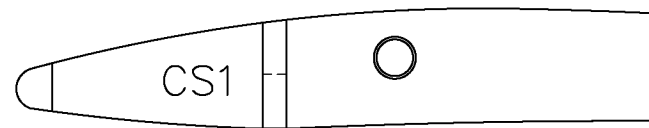
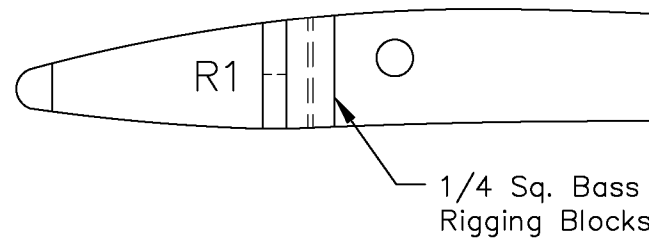
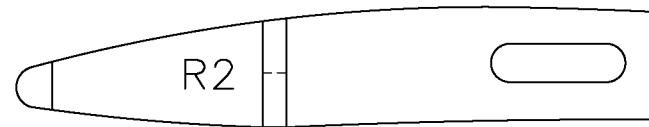
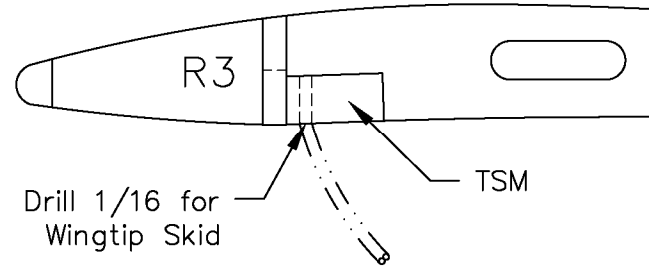
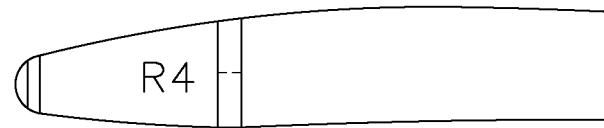
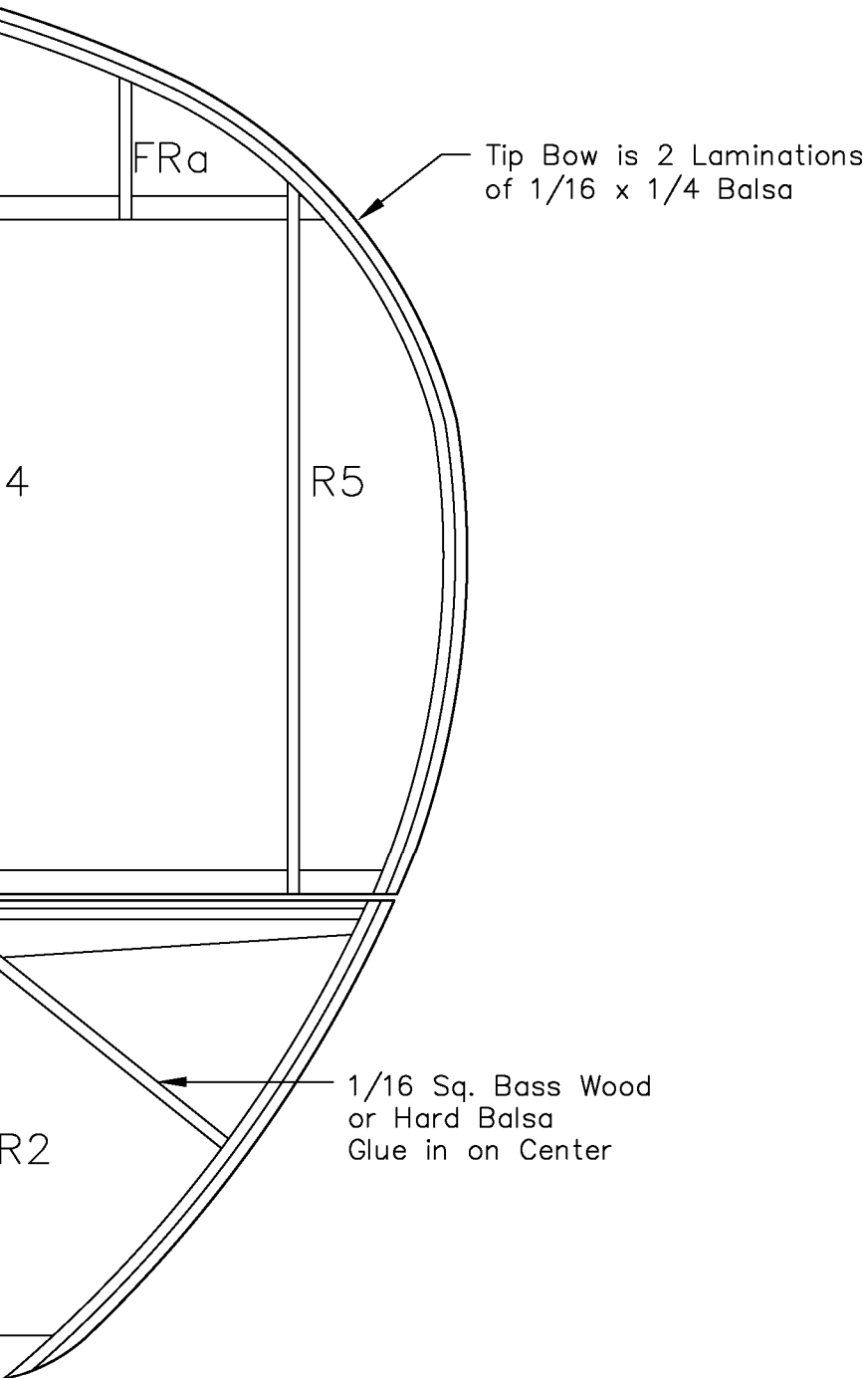
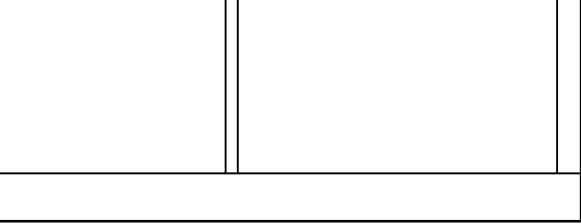


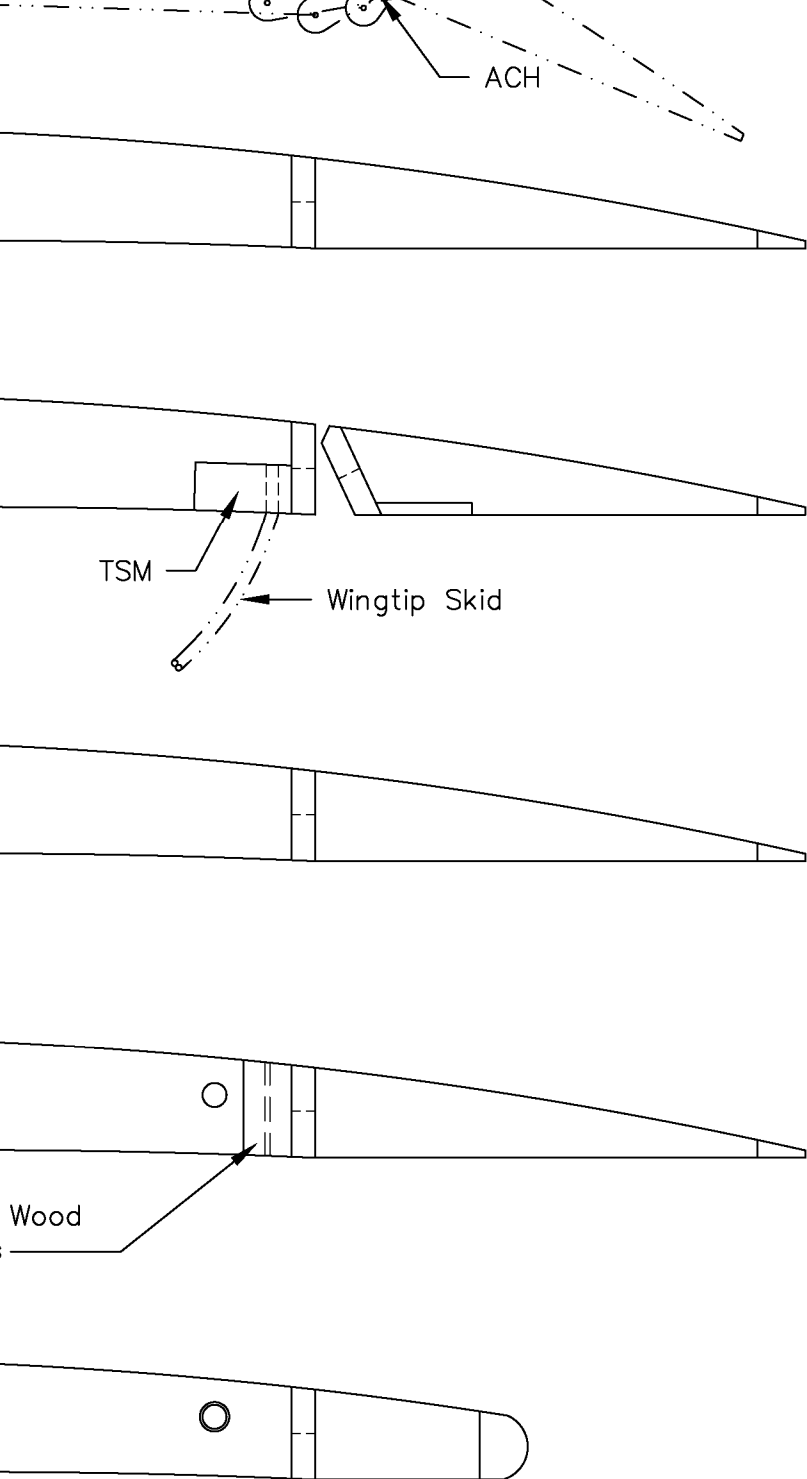
3/32 x 1/4 Balsa



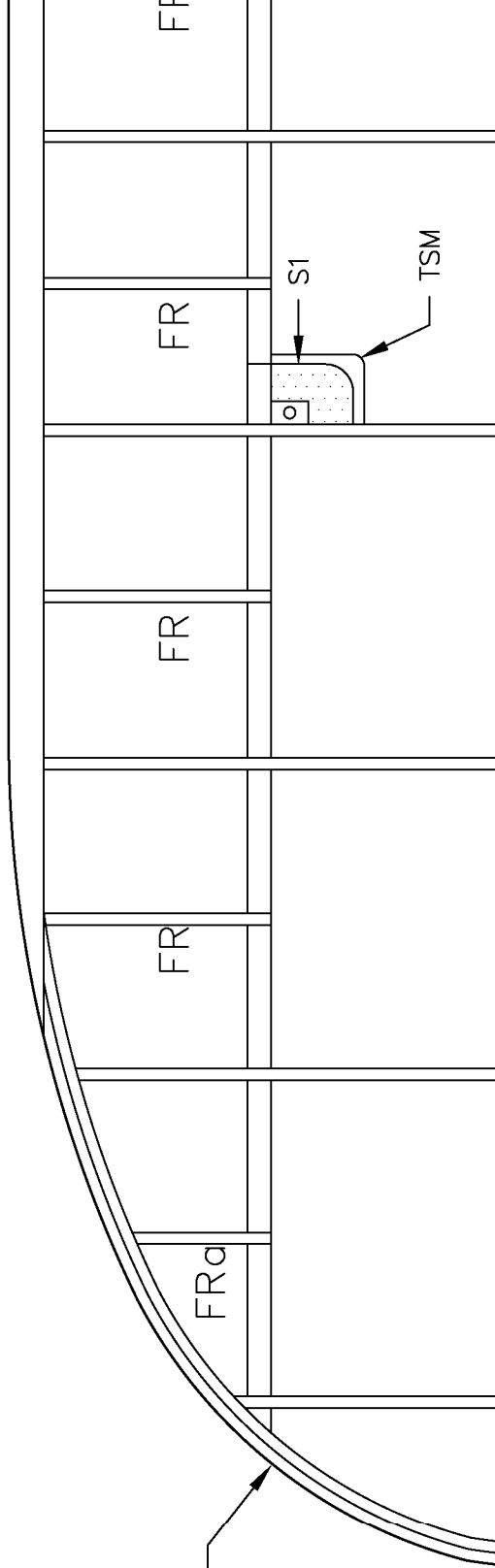
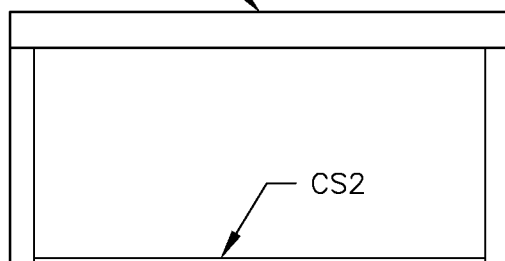
TSM Make from 1/4
Bass Wood 4 Req.



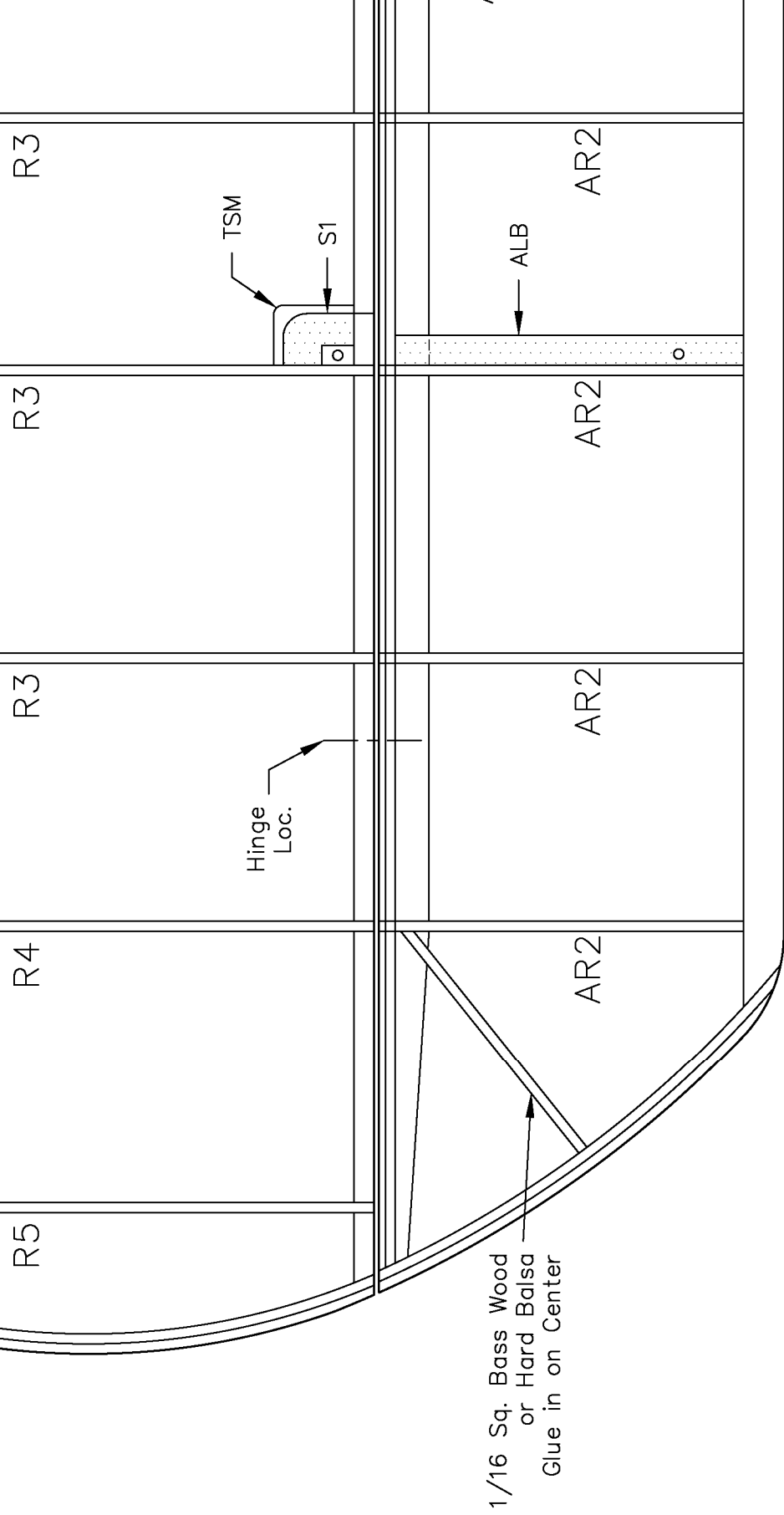




1/4 Sq. Balsa

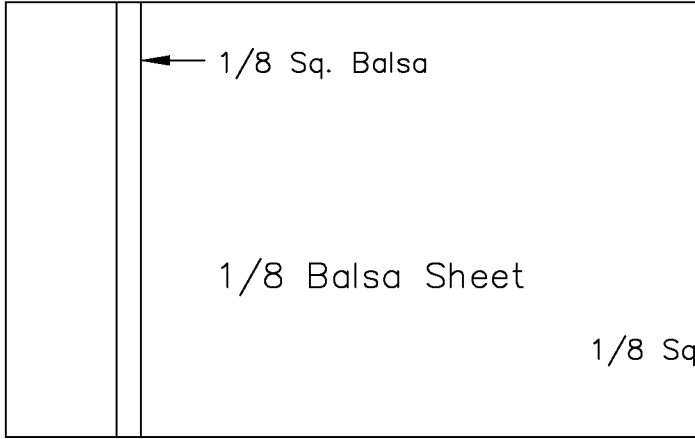


Tip Bow is 2 Laminations
of 1/16 x 1/4 Balsa



3/32 x 1/4 Balsa

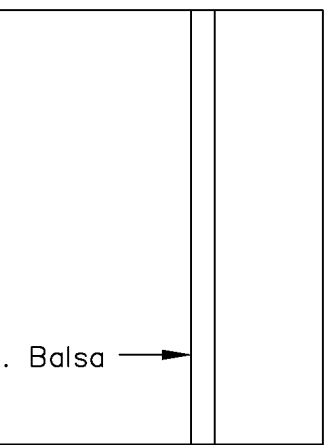
3/32 x 1/4



Main Landing Gear Assembly

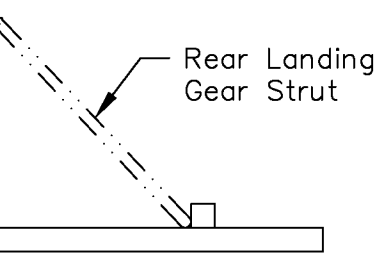


Balsa

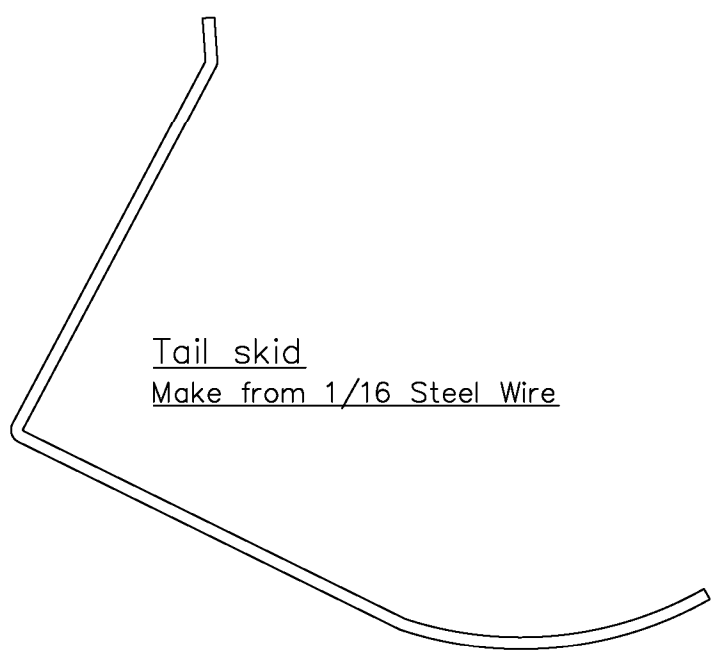


. Balsa

ply Jig



Rear Landing
Gear Strut

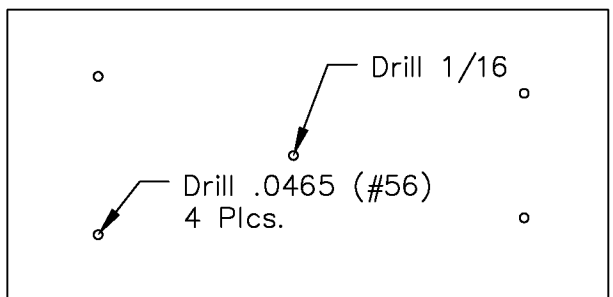
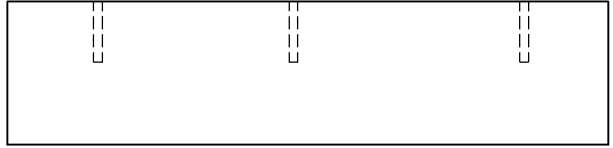
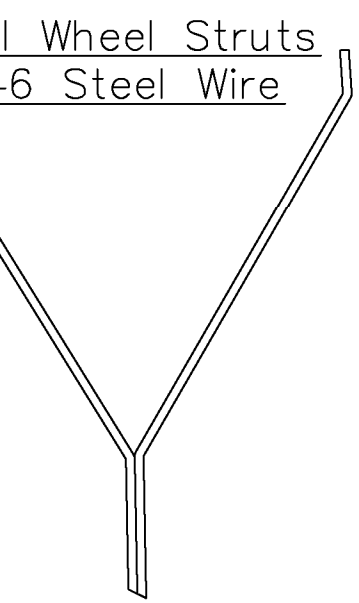


Tail skid
Make from 1/16 Steel Wire

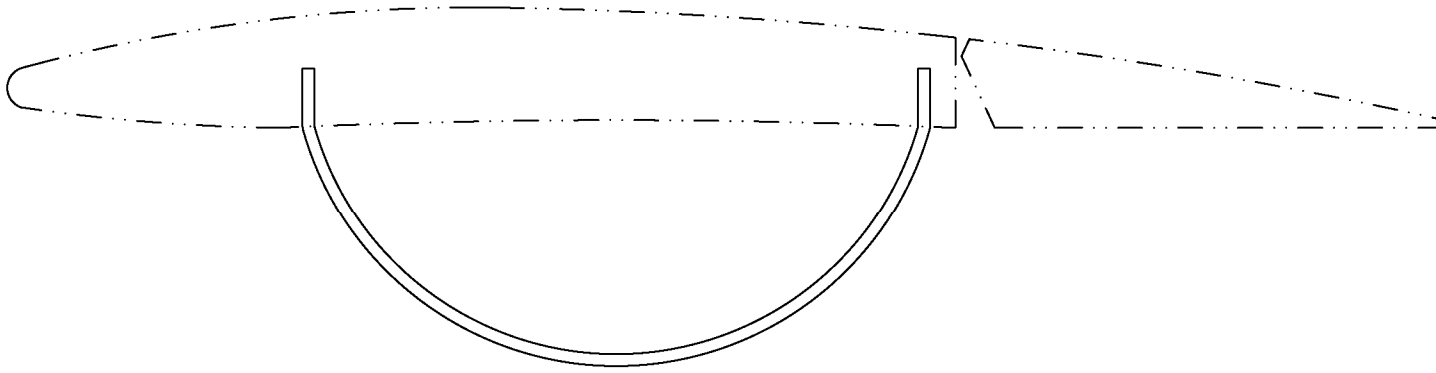


Tai
.04

3/32 x 1/4 Balsa



Tailskid Assembly Jig
Make from 3/4" Pine



Wingtip Skid
Make from 1/16 Steel Wire 2 Req.

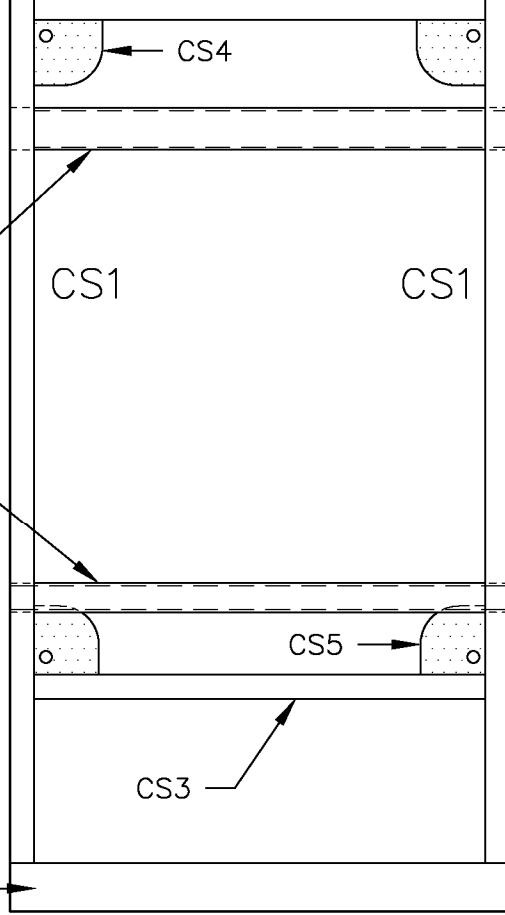
1 inch reference



7/32 O. D. Aluminum Receiver Tube

5/32 O. D. Aluminum Receiver Tube

1/4 x 3/8 Balsa



Top Wing Center Section
Assembly Drawing

square

Copyright 2023



and **ModelAviation**

Copying for resale of this drawing without
the written approval or consent of AMA
is expressly prohibited.

Plans No. 1139

R . A . F . B . E . 2c

Span: 50"

Length: 39"

Wing Area: 725 Sq. In.

Flying Weight: 26.5 oz.

Wing Loading: 5.25 Oz./ Sq. Ft.

Designed by: Pat Tritle

Sheet 2 of 3 © 6-23-2021