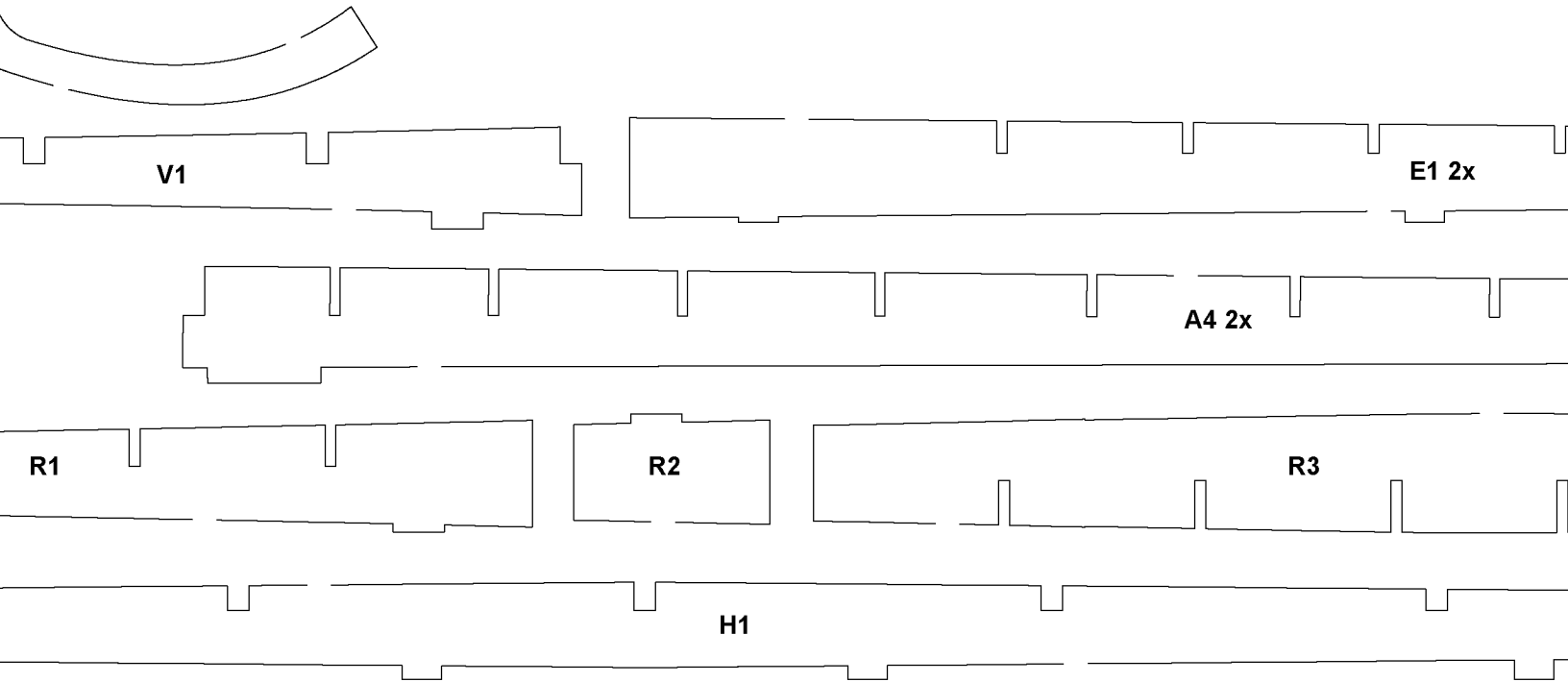


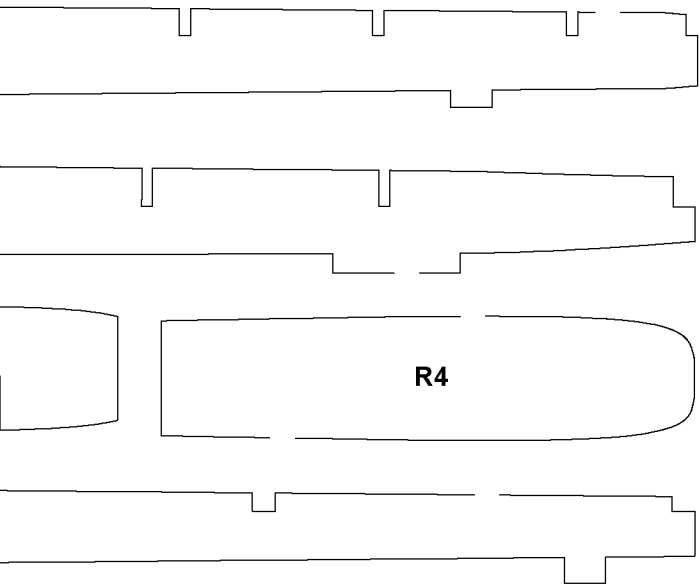
1/4" BALSA--MA

**PARTS OUTLINES: THIS KIT WAS
OF YOU WILLING TO CUT BY HAND
PLEASE DISREGARD THE TABS IN**



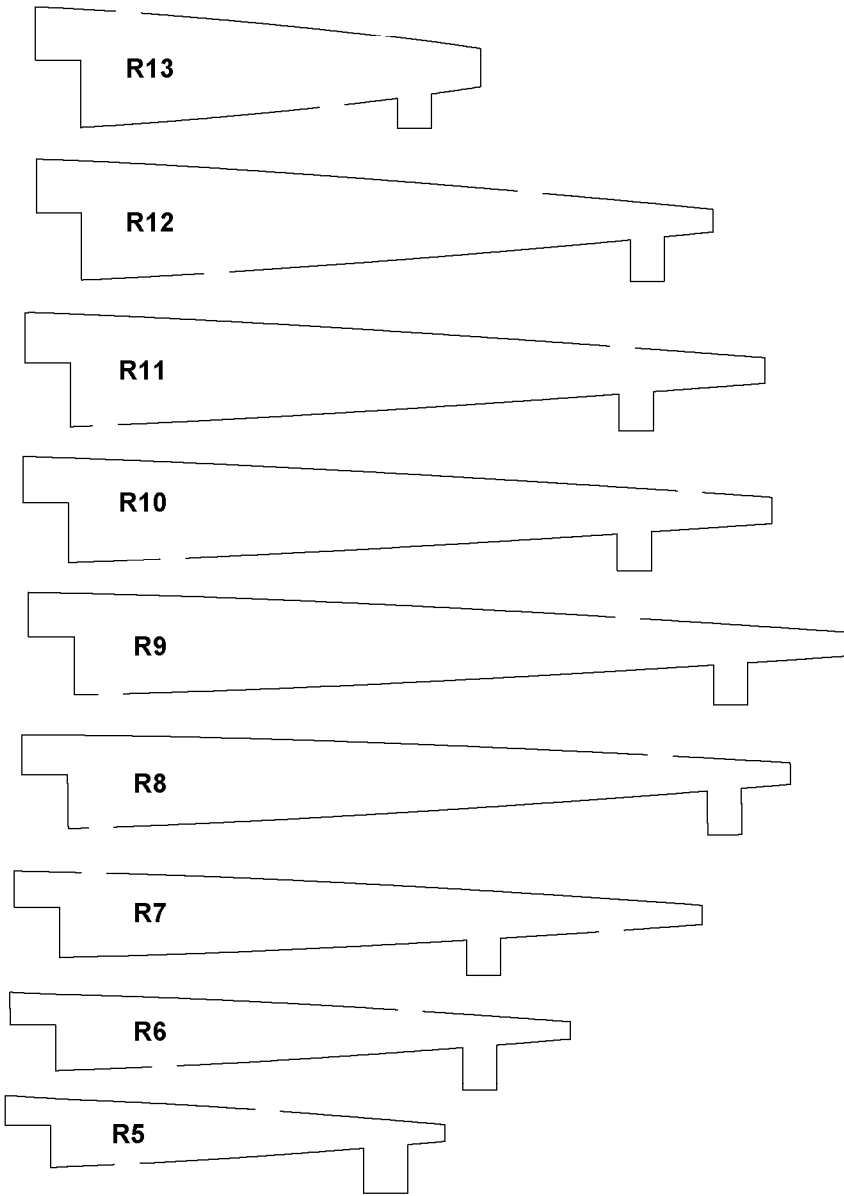
MAKE 1 OF EACH UNLESS OTHERWISE NOTED

DESIGNED FOR LASER CUTTING FROM THE START. BUT FOR THOSE
ND, HERE ARE THE OUTLINES FOR ALL OF THE PARTS FROM THE SHORT KIT.
N THE OUTLINES THAT ARE USED BY THE LASER CUTTER.

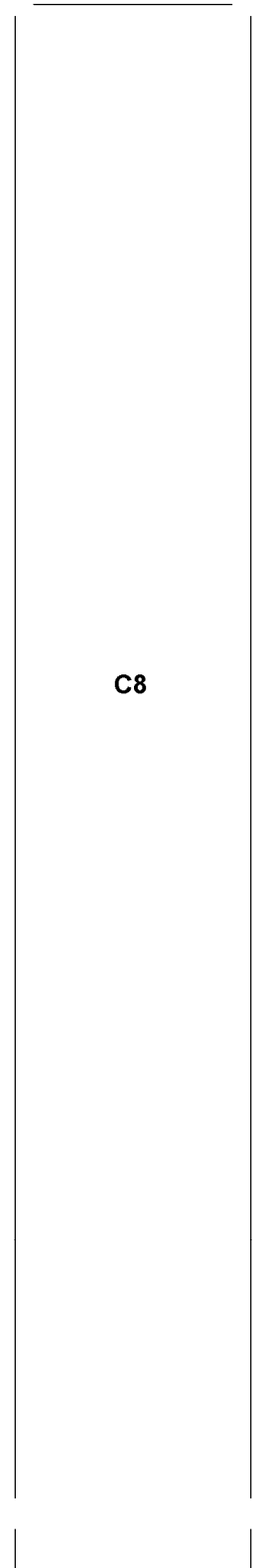
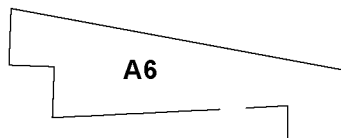
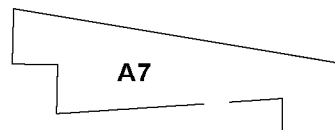
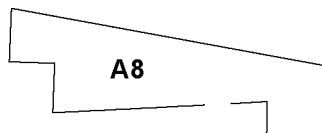
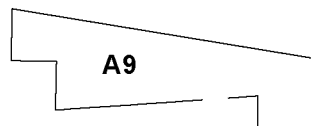
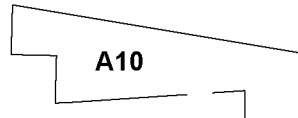
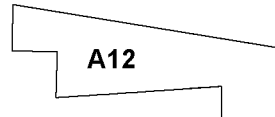
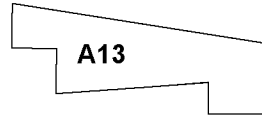
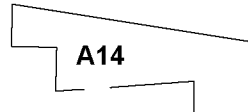
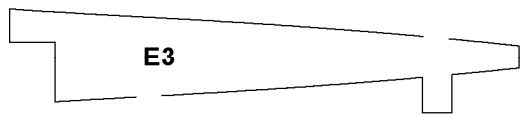
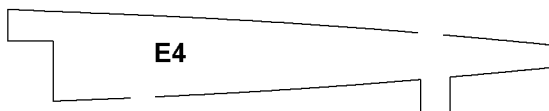
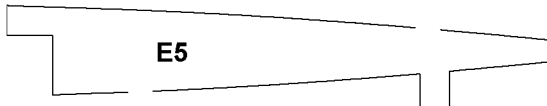
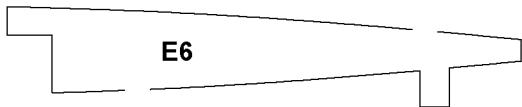
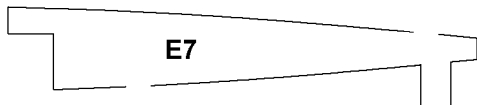
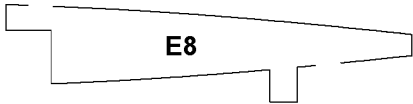
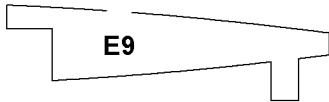
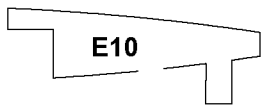
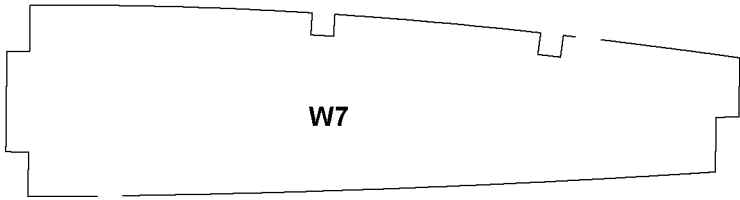


R4

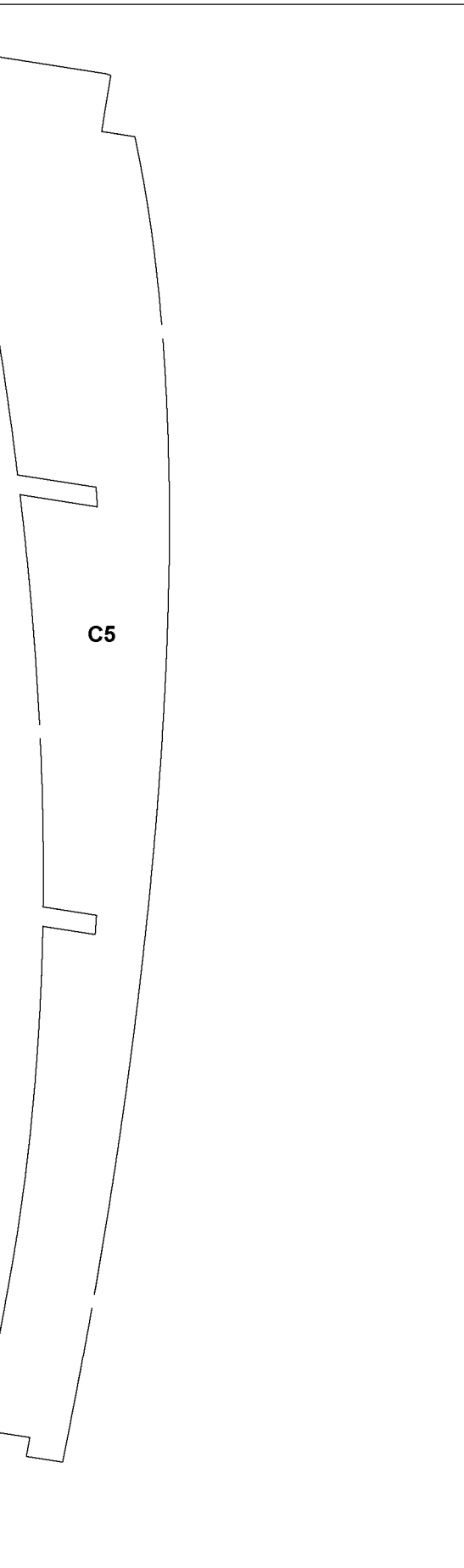




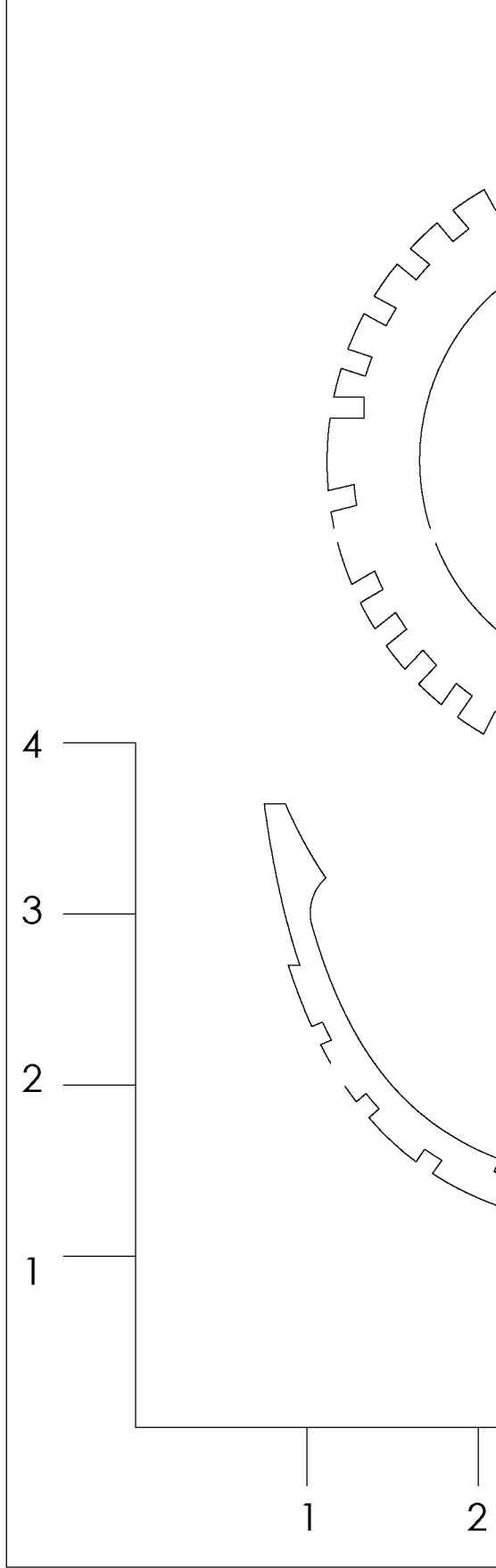
1/16" Balsa--MAKE 1 OF EACH



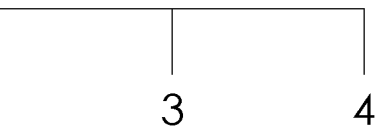
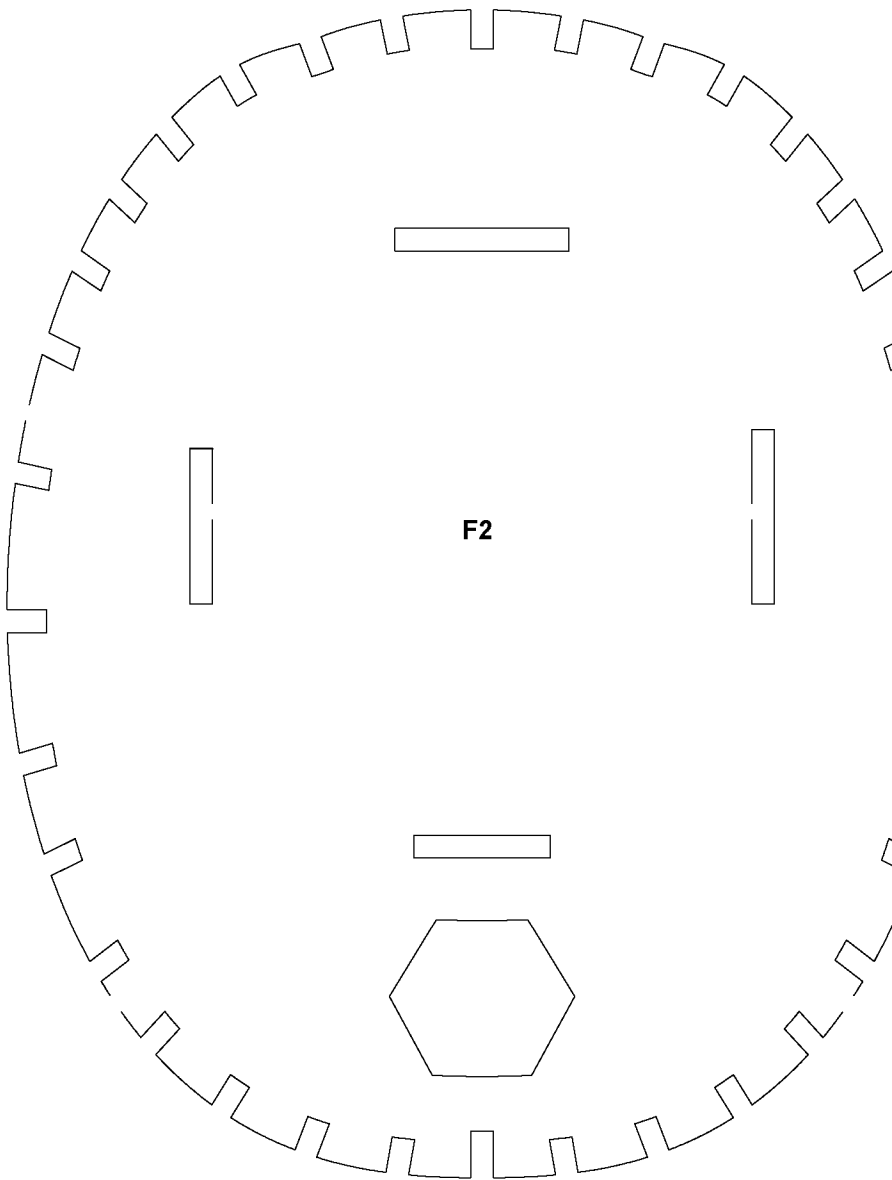
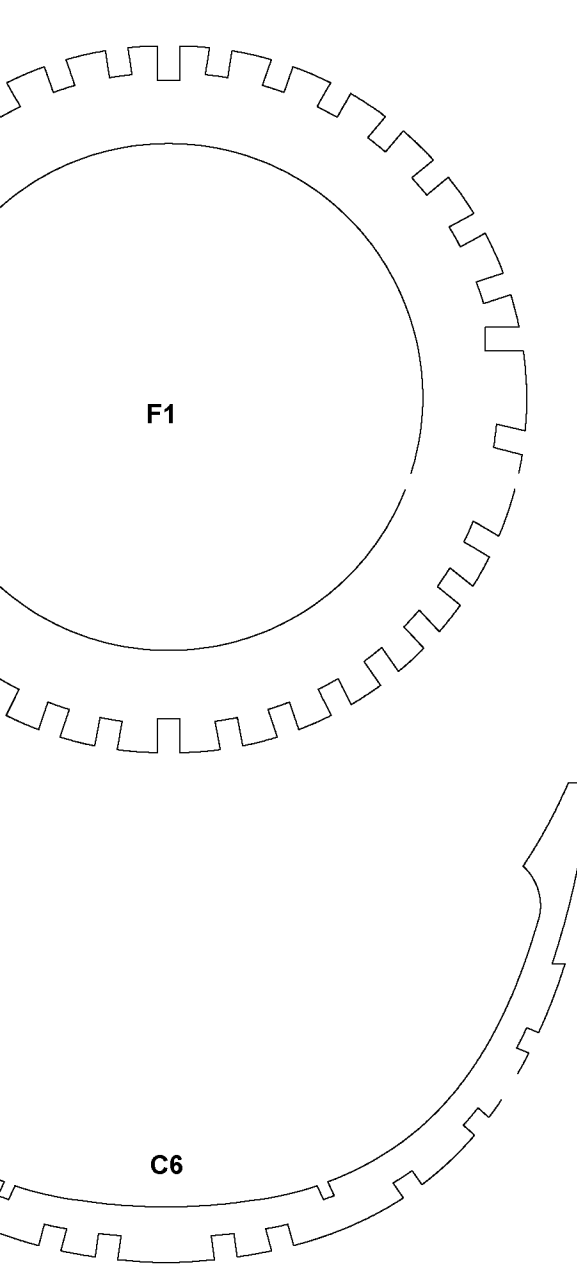
1/16" Balsa--MAKE 2 OF EACH



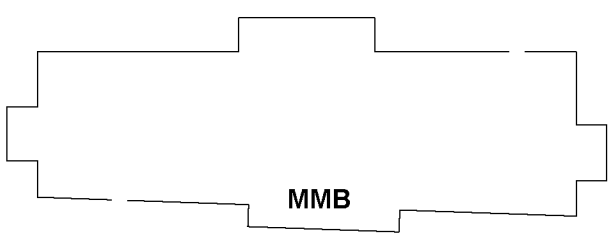
C5



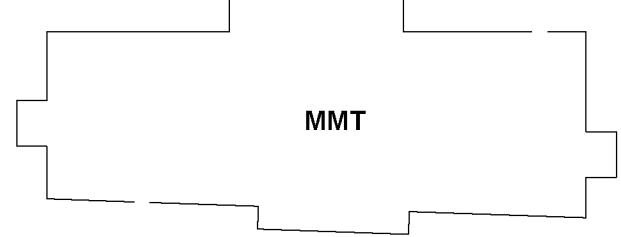
NOTE ON ALL PARTS WITH CENTERLINES: ONE SIDE SHOWN FOR ECONOMY OF SPACE
MAKE A LEFT AND RIGHT SIDE FOR EACH OF THESE PARTS



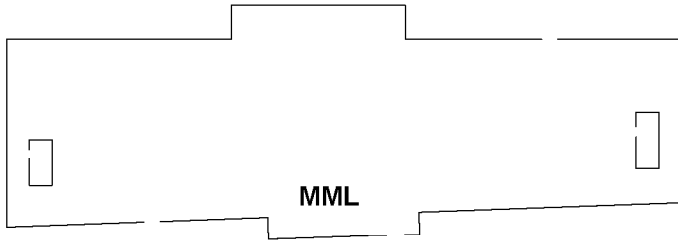
E



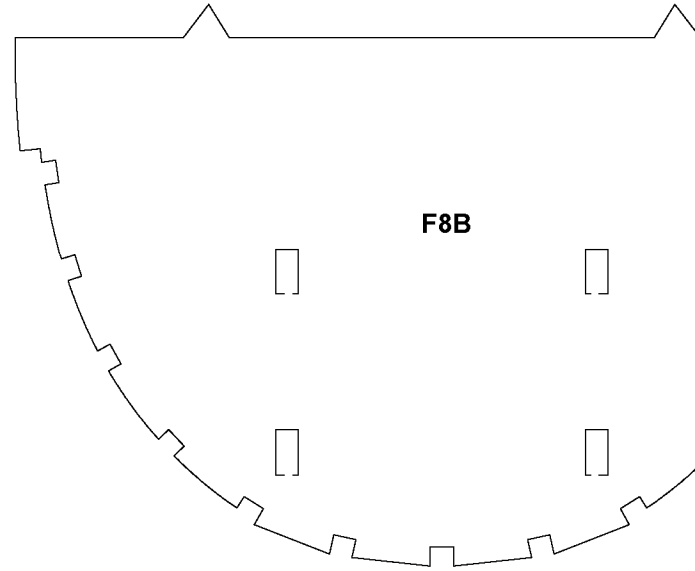
MMB



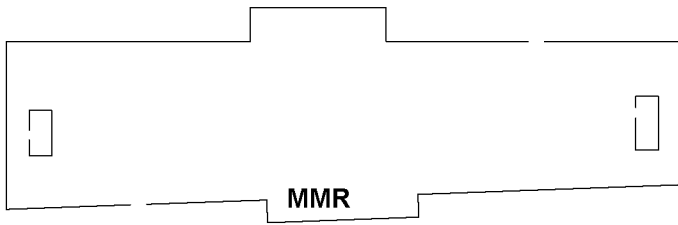
MMT



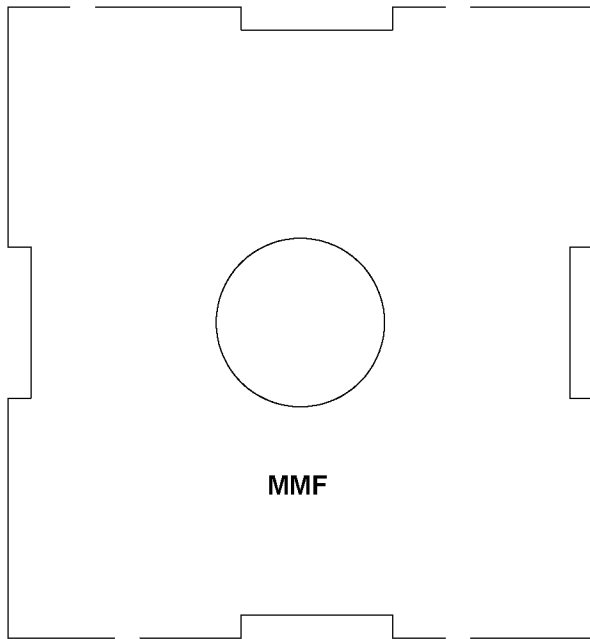
MML



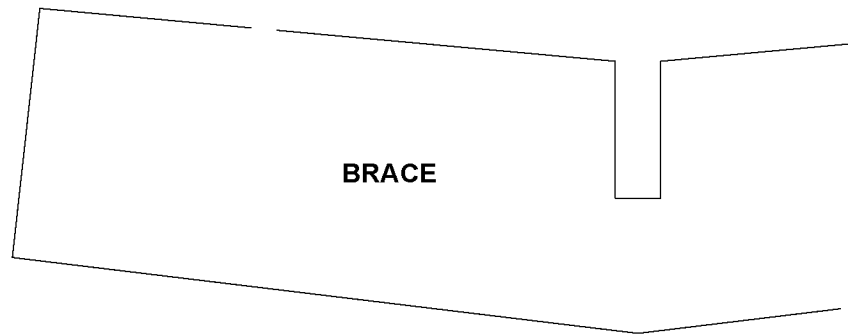
F8B



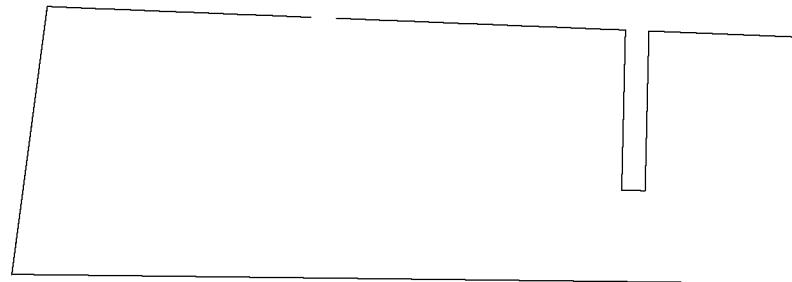
MMR



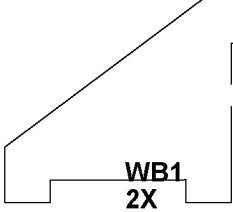
MMF



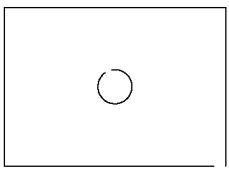
BRACE



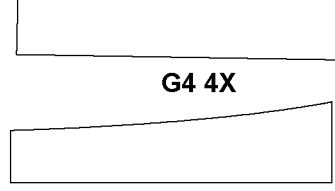
1/8" LIGHT PLY--MAKE 1 OF EACH UNLESS OTHERWISE NOTED



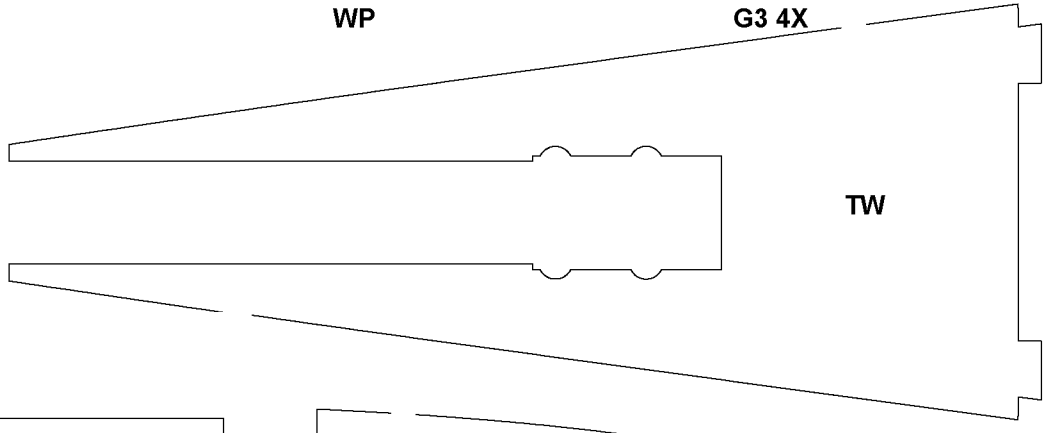
WB1
2X



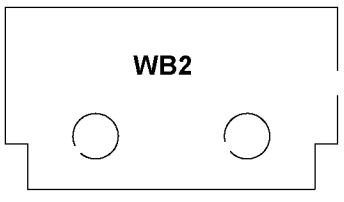
WP



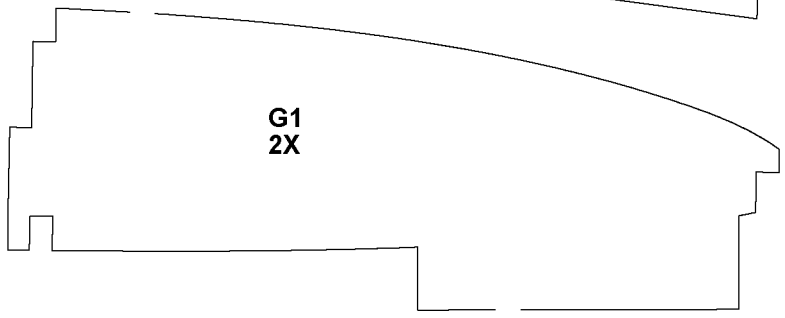
G4 4X



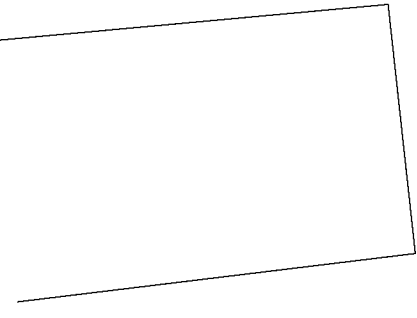
TW



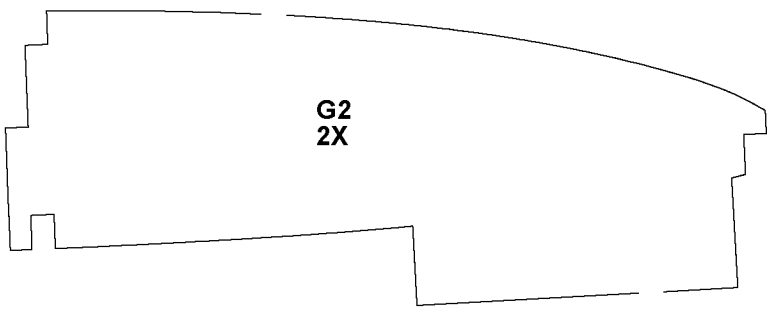
WB2



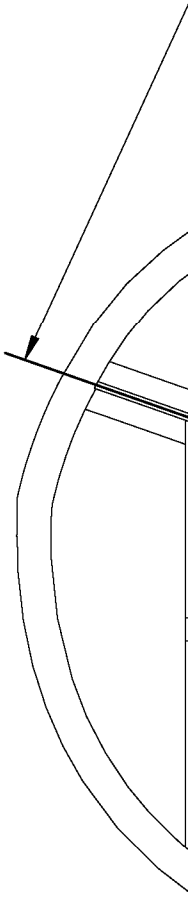
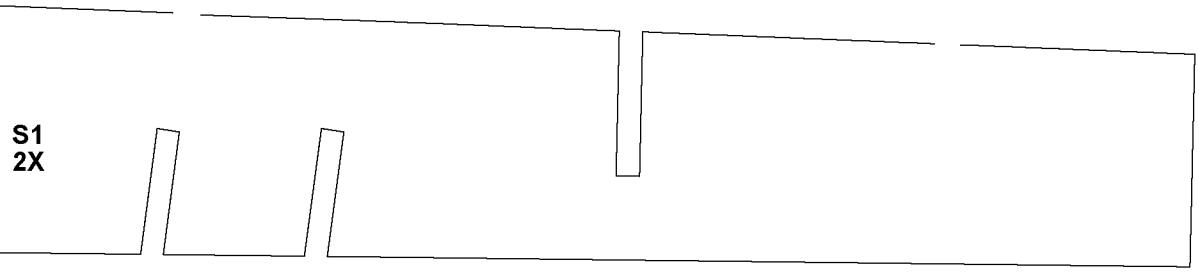
G1
2X



S1
2X



G2
2X

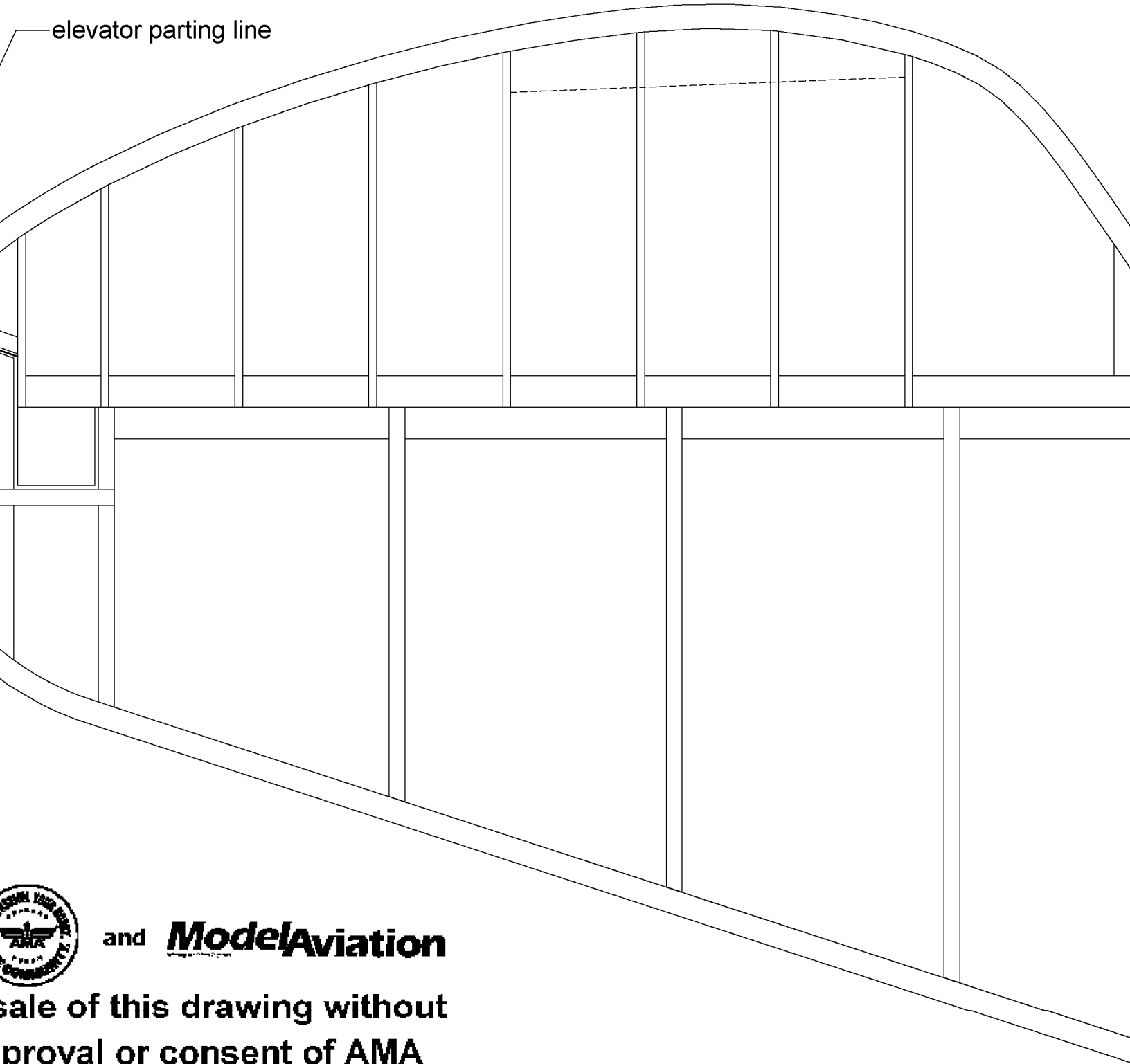


Copyright 2024

Copying for res
the written ap
is exp

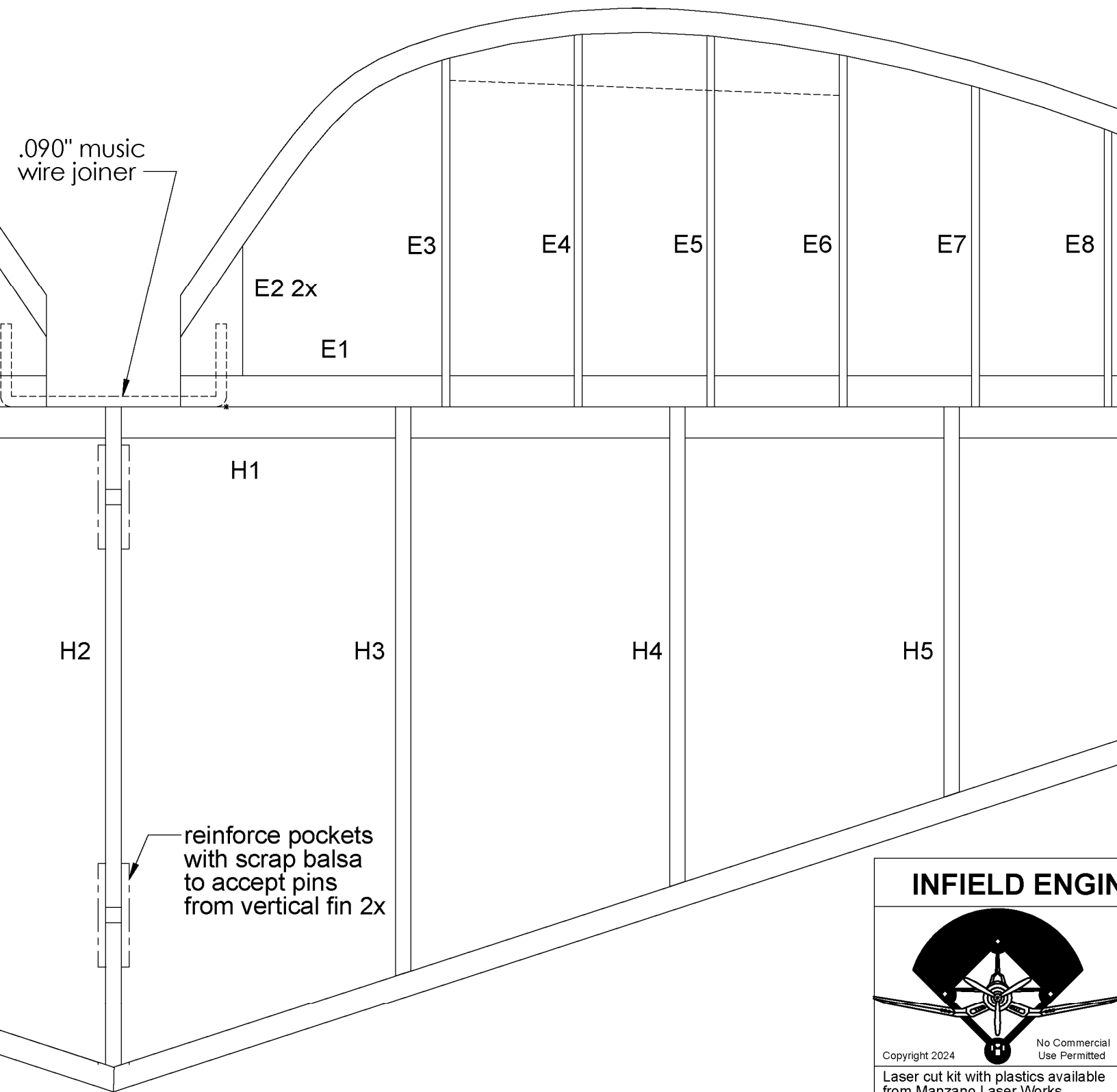


elevator parting line

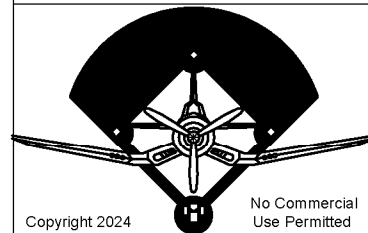


and **ModelAviation**

sale of this drawing without
approval or consent of AMA
expressly prohibited.



INFIELD ENGINE

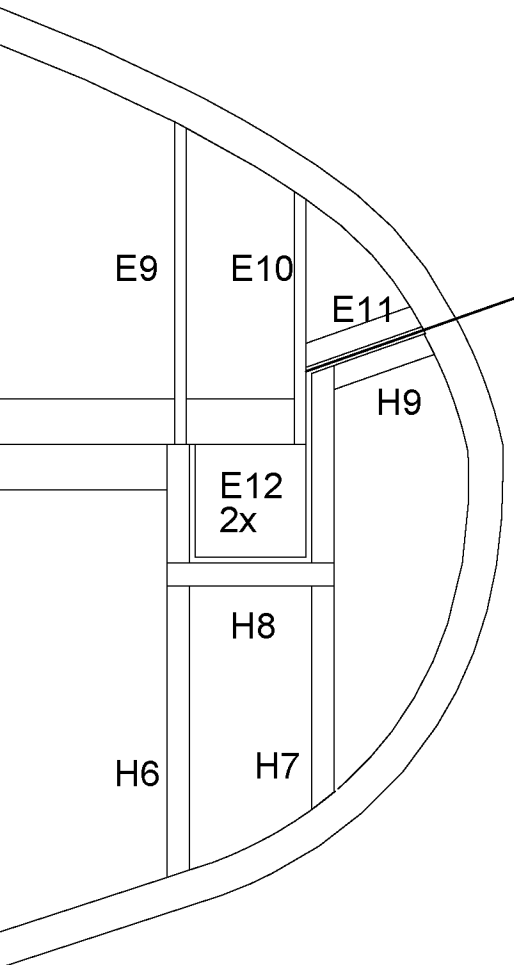


Copyright 2024

No Commercial Use Permitted

Laser cut kit with plastics available from Manzano Laser Works

www.manzanolaser.com



ENGINEERINGtm by Paul Kohlmann

Title		
60" Curtiss P-40C Tomahawk Plans No. 1143		
Size	Dwg. No.	Rev
X	Curtiss P40C.drw	A
Scale: 1:1	Weight: 4.5-5.5lbs	Sheet 3 of 4