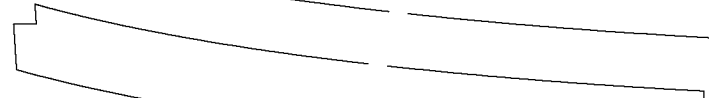
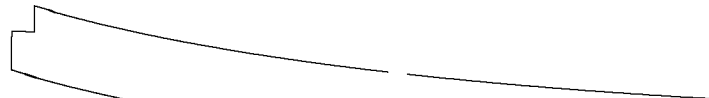
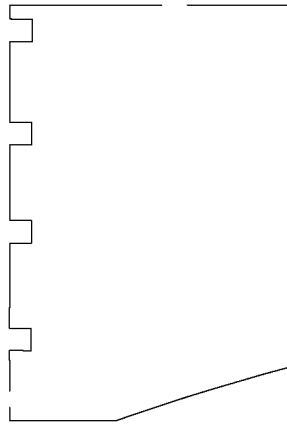
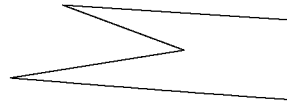


**NOTE ON ALL PARTS WITH CENTERLINES: ONE SIDE SHOWN FOR EACH PART.  
MAKE A LEFT AND RIGHT SIDE FOR EACH OF THESE PARTS**

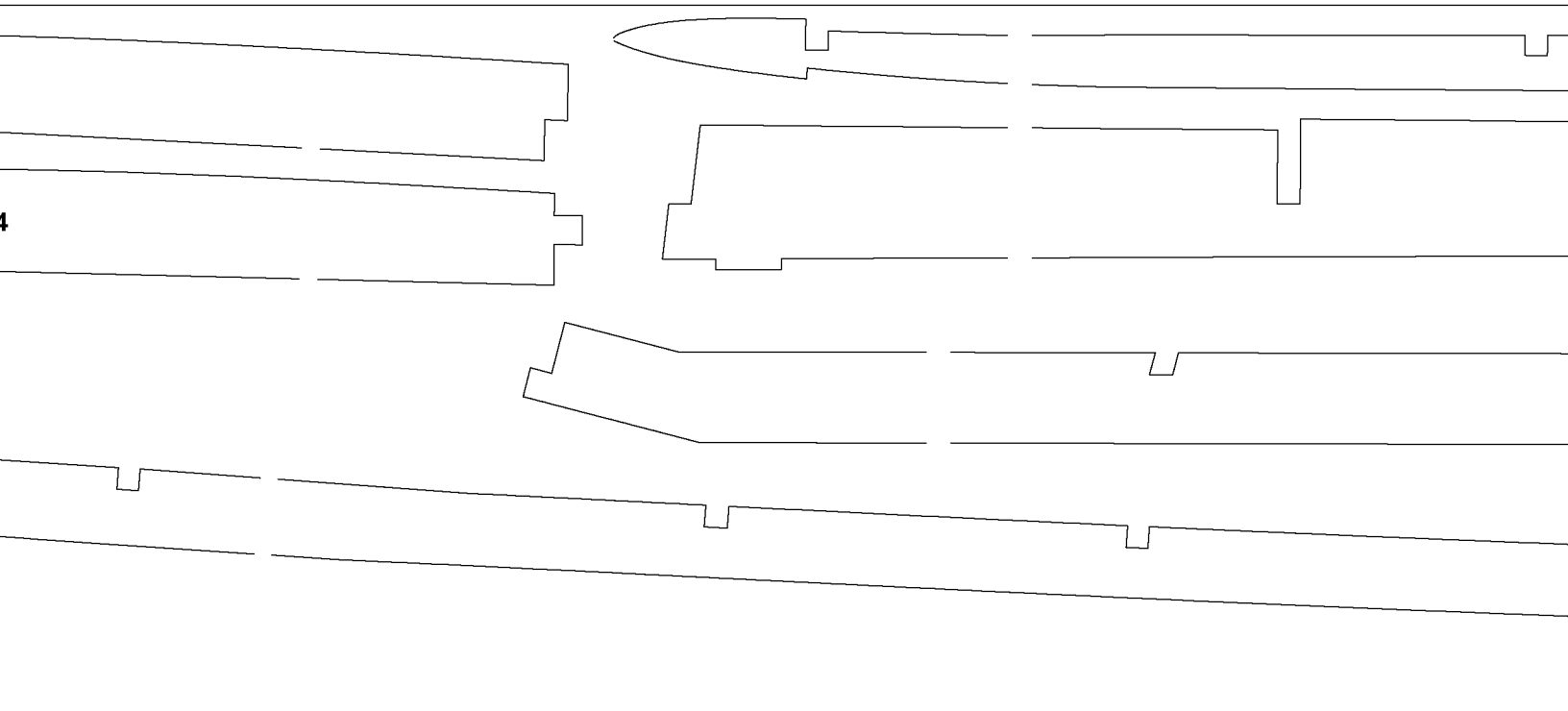
K6

K4

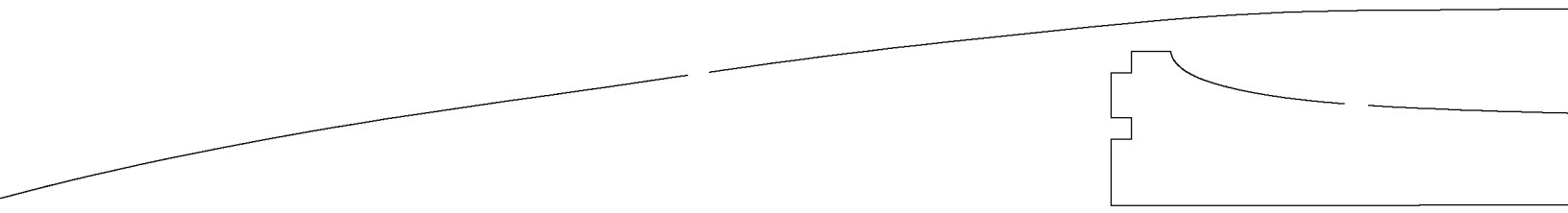


FOR ECONOMY OF SPACE





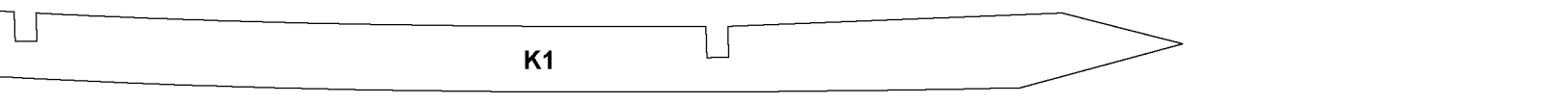
WS



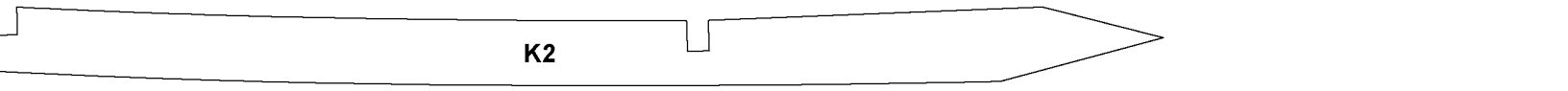
A2

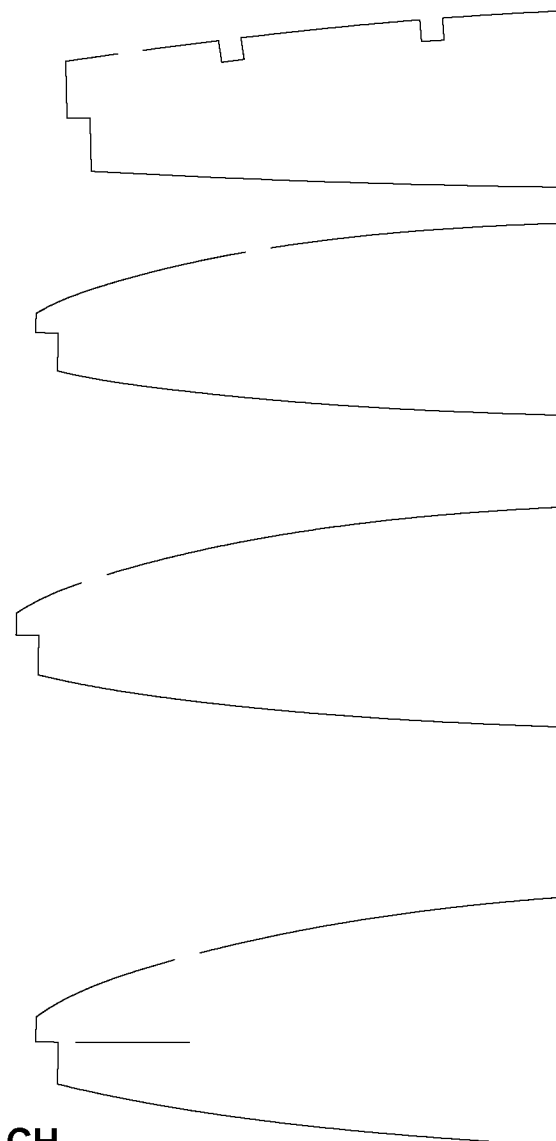
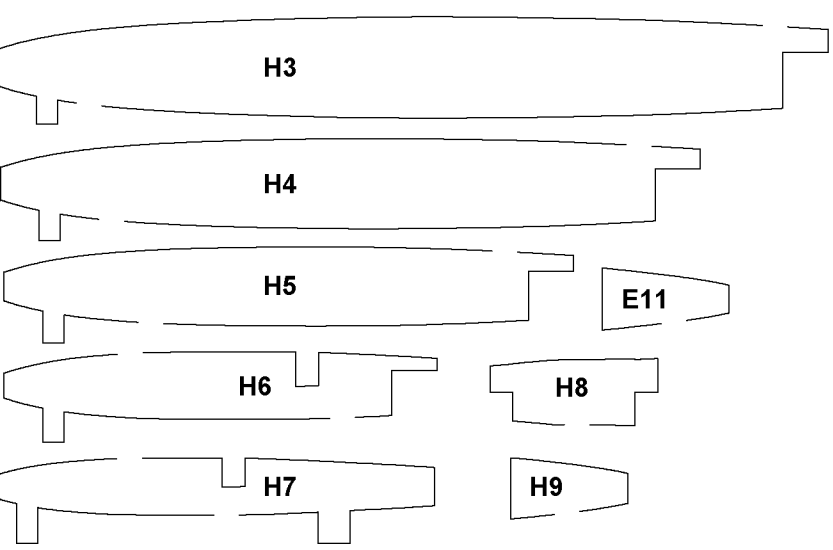
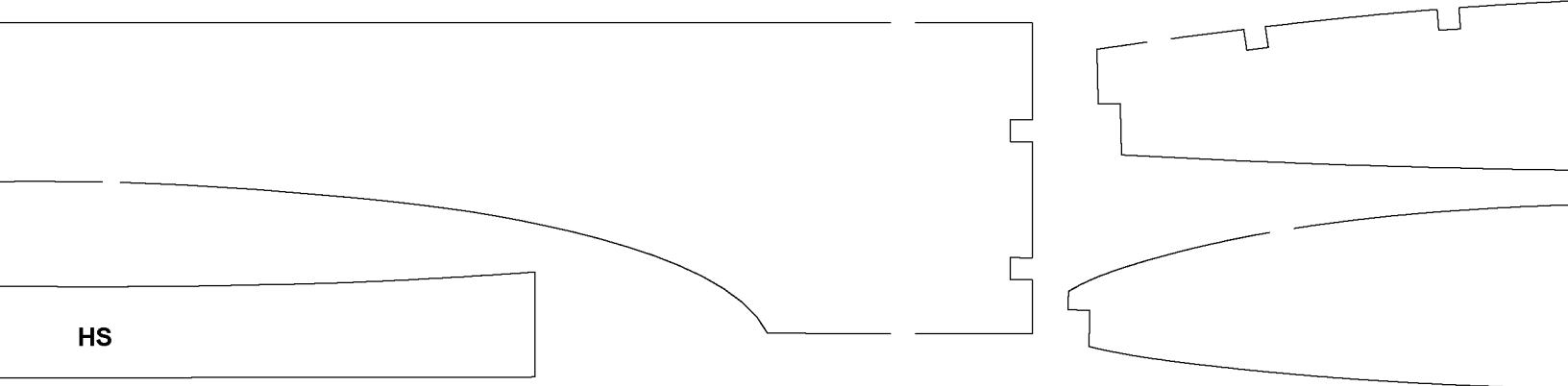
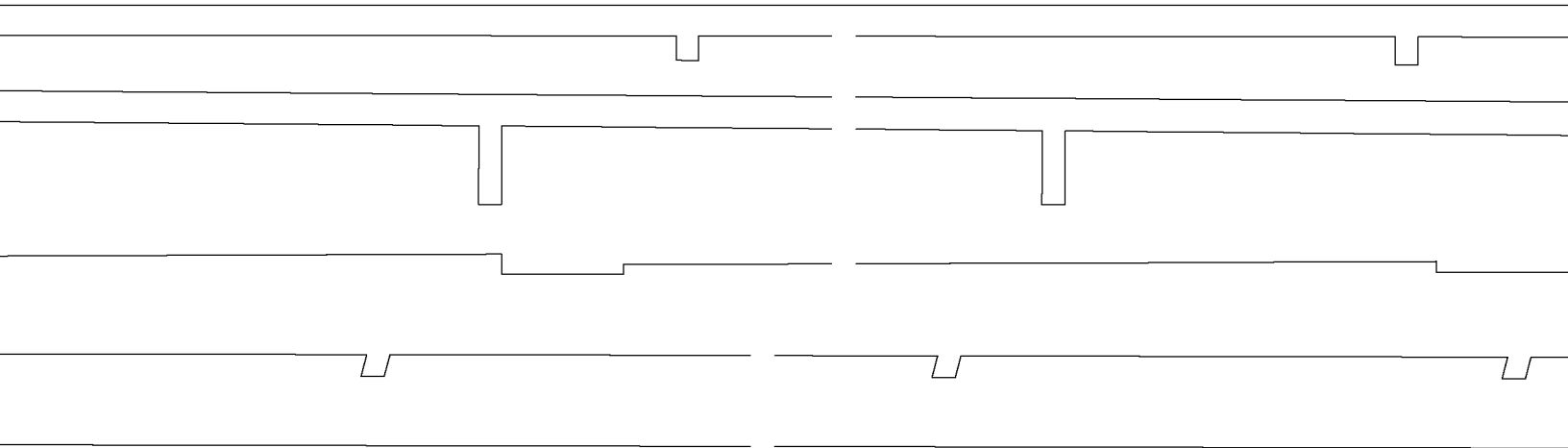


K1



K2





1/8" Balsa. MAKE 2 OF EACH

LE

RS

TE

K1/2

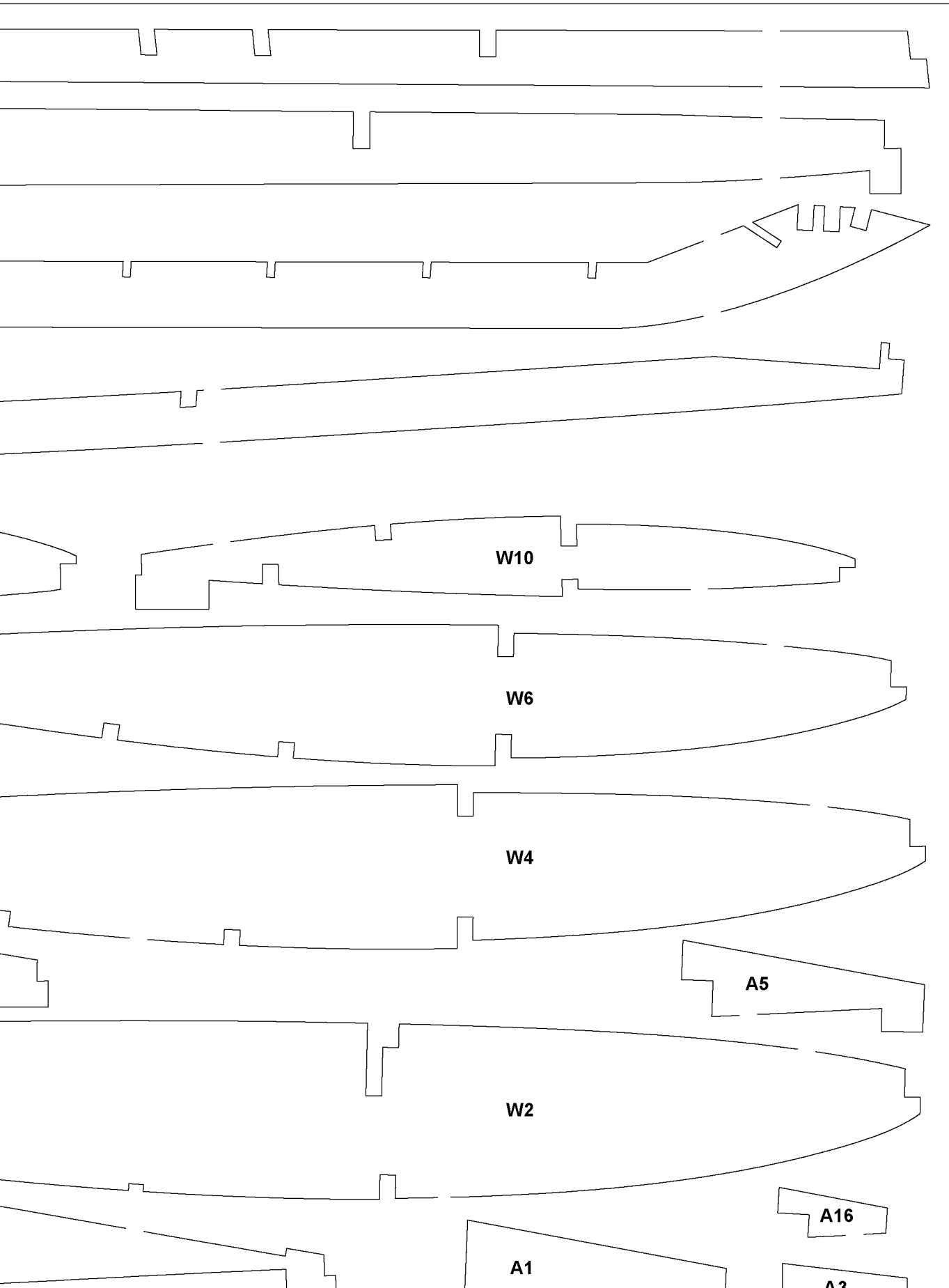
W8

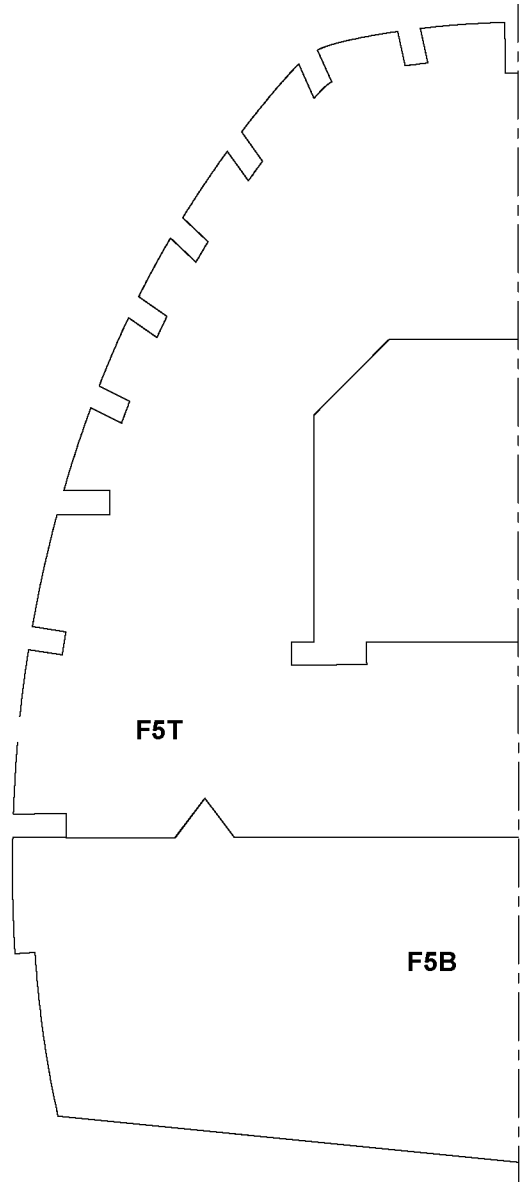
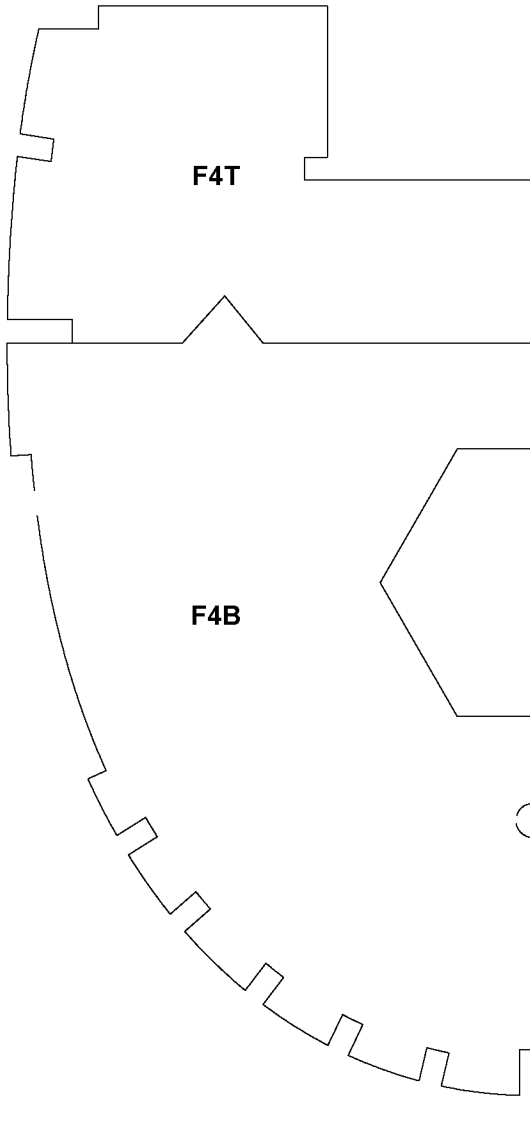
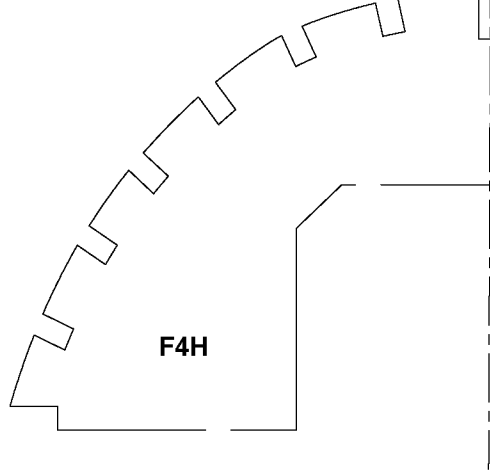
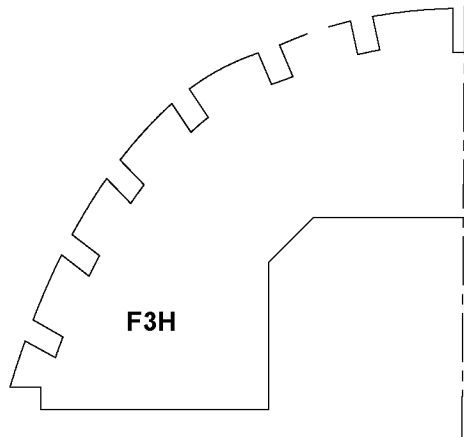
W9

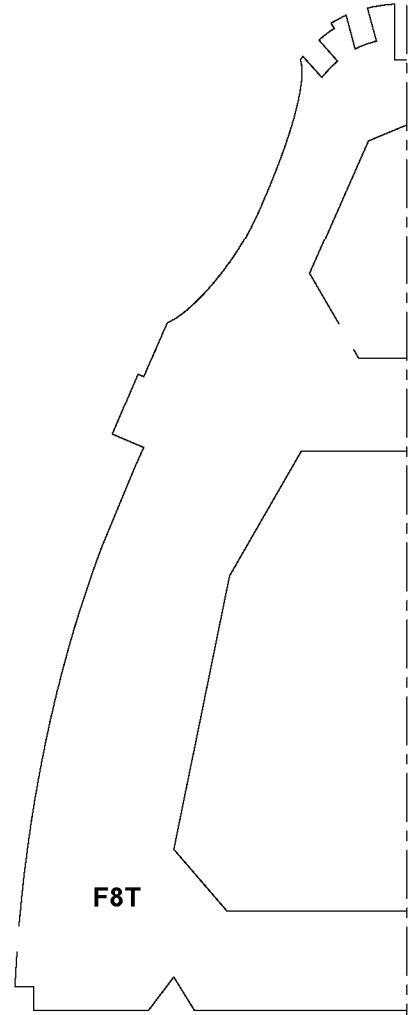
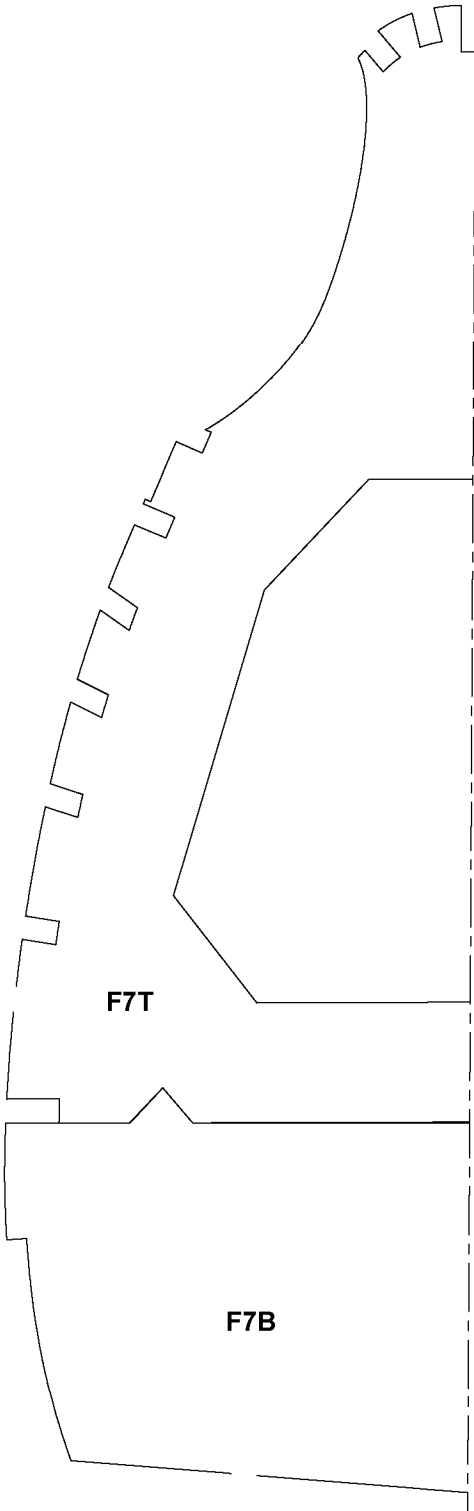
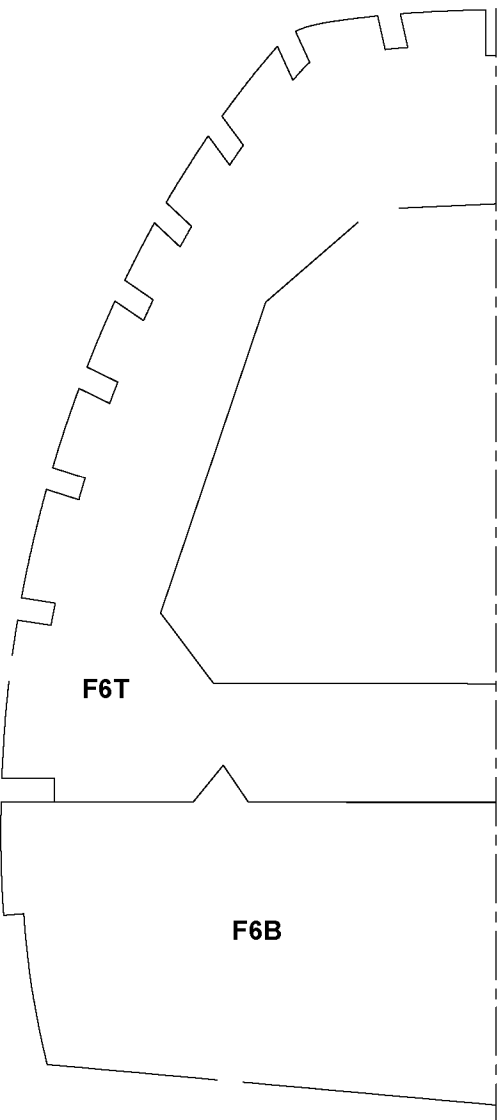
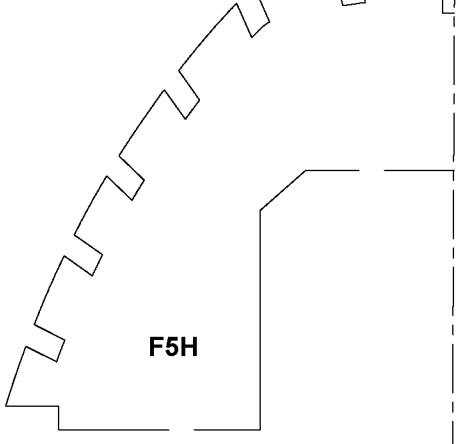
W5

W3

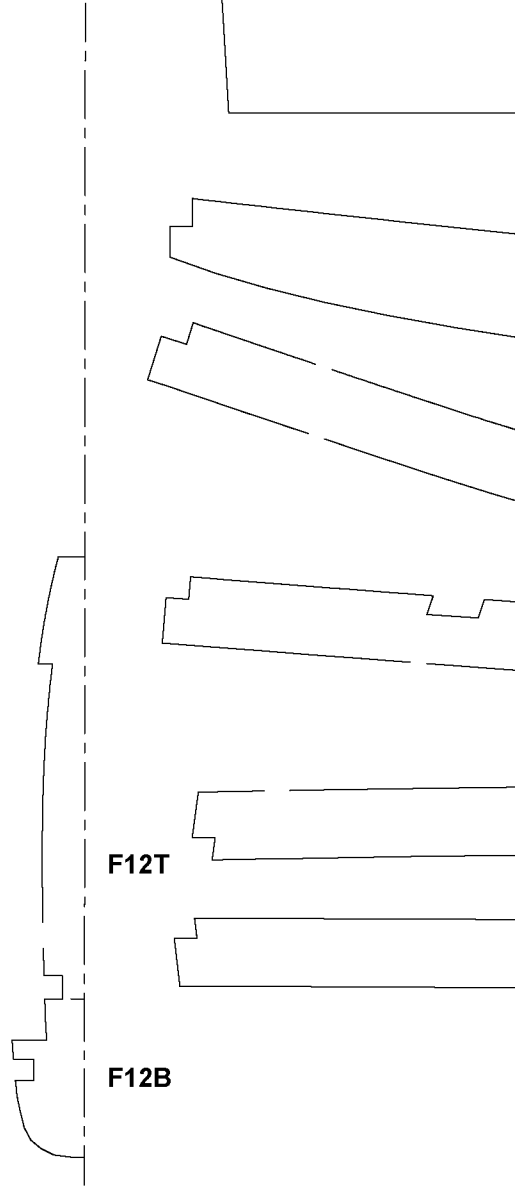
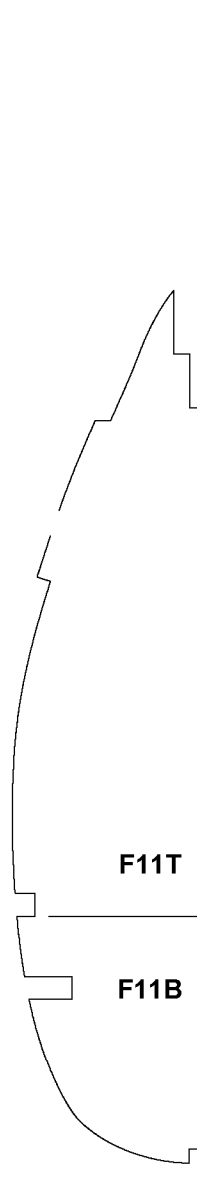
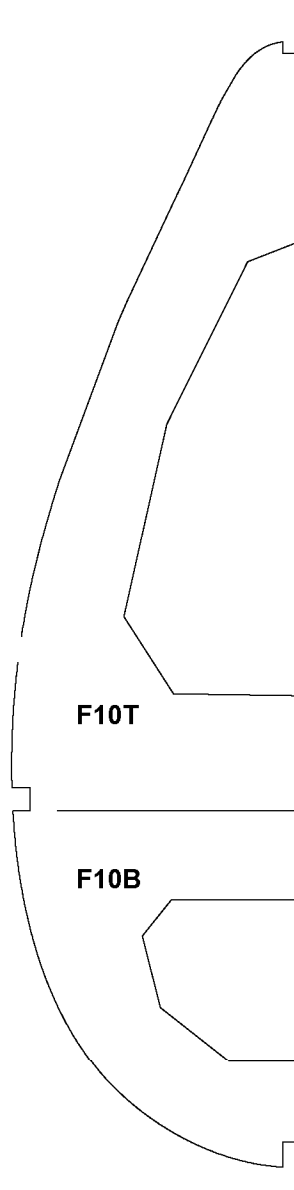
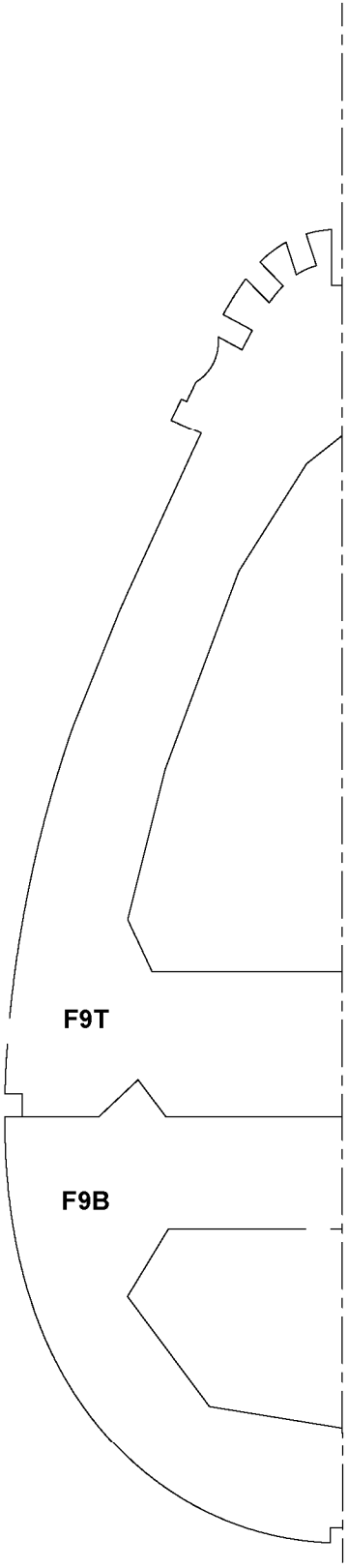
W1





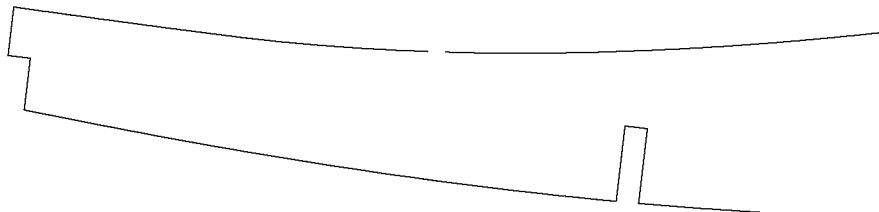
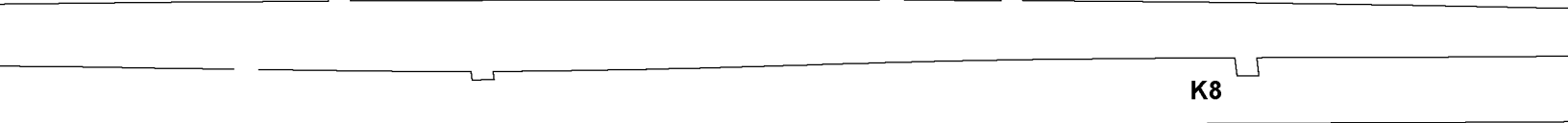
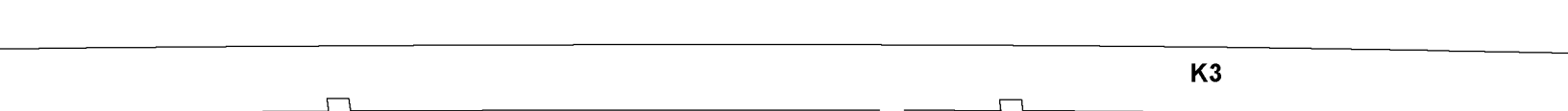
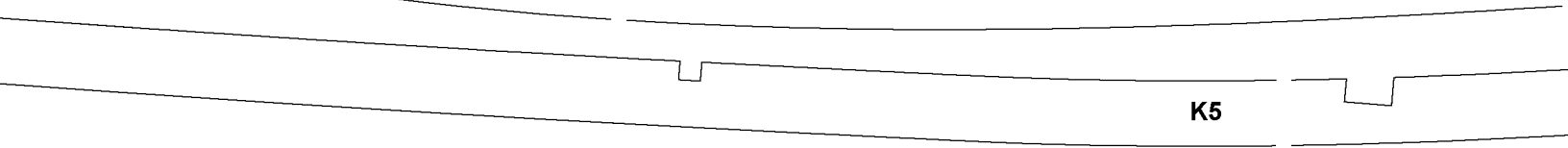
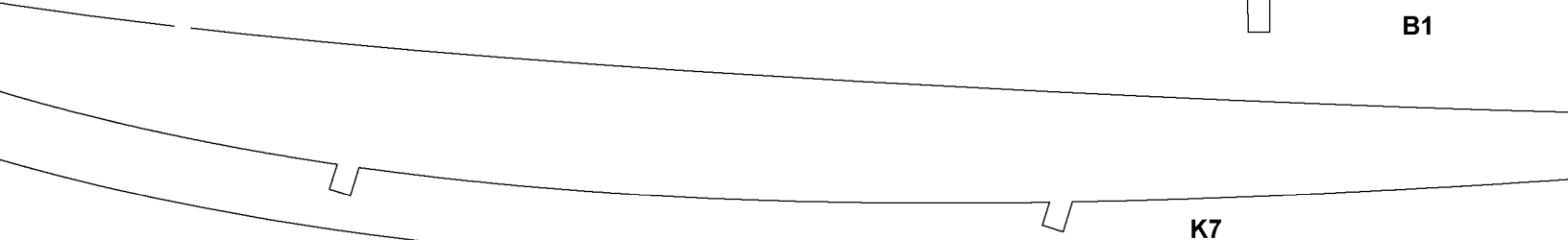
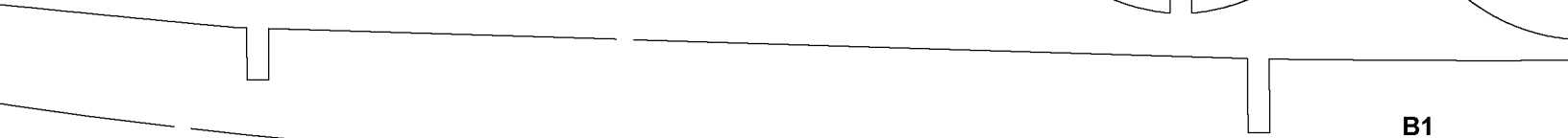
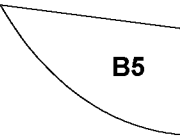
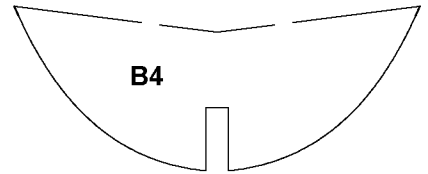
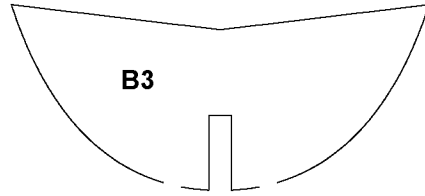
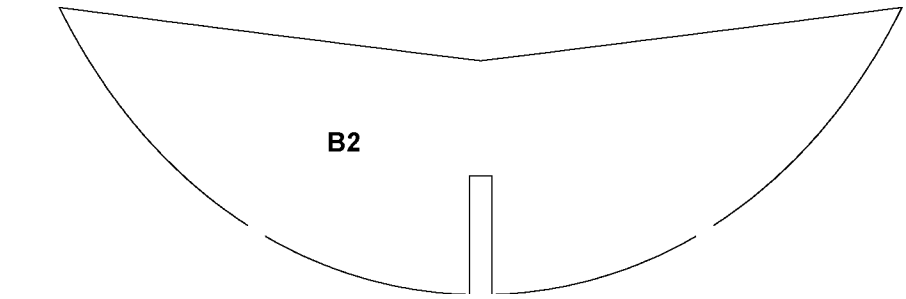






1/8" Balsa--MAKE 1 OF EACH  
UNLESS OTHERWISE NOTED

SERVO



BATT

B6

H2

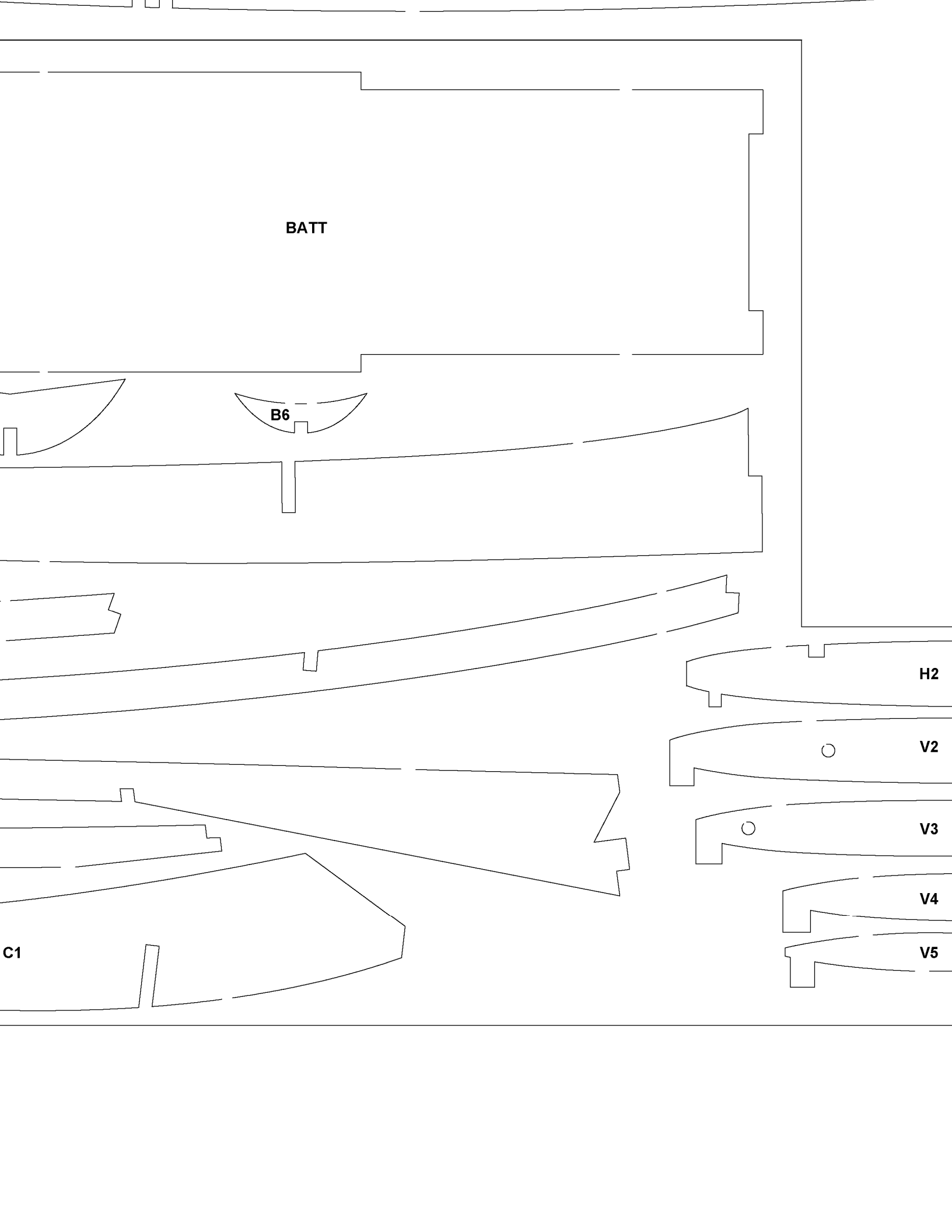
V2

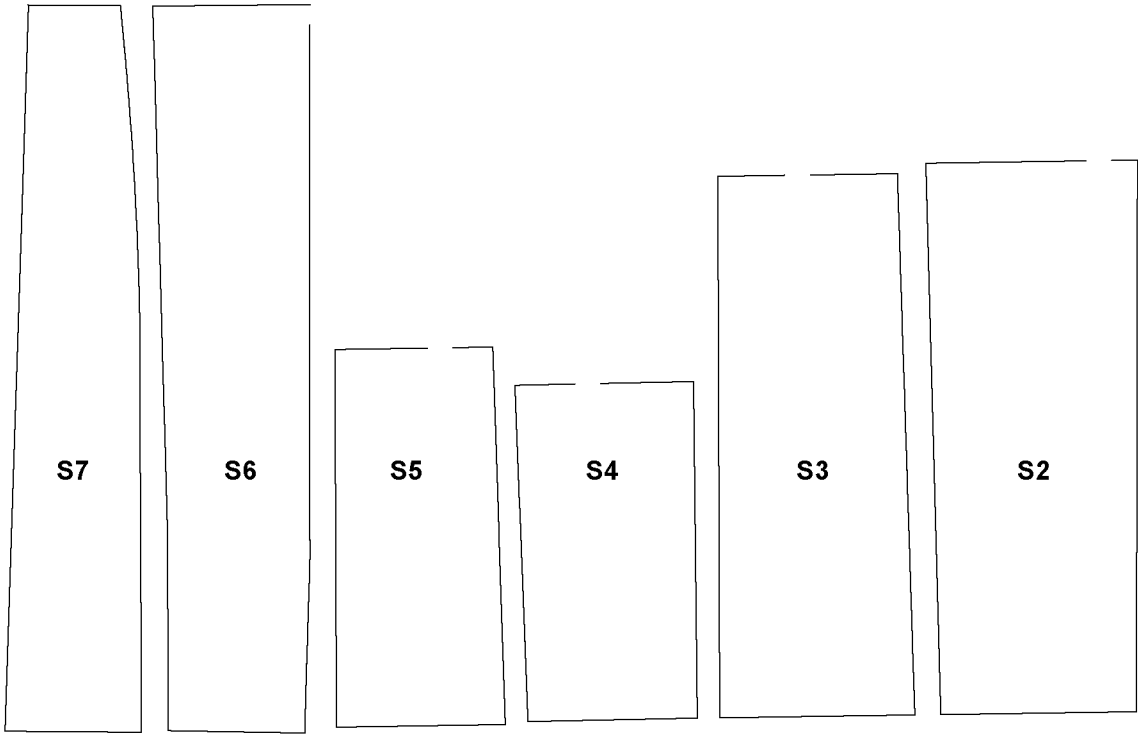
V3

V4

V5

C1





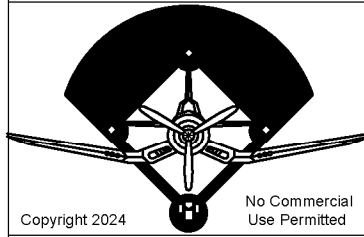
Copyright 2024



and **ModelAviation**

**Copying for resale of this drawing without the written approval or consent of AMA is expressly prohibited.**

**INFIELD ENGINEERING<sup>tm</sup> by Paul Kohlmann**



Copyright 2024

No Commercial Use Permitted

Laser cut kit with plastics available from Manzano Laser Works

[www.manzanolaser.com](http://www.manzanolaser.com)

Title

**60" Curtiss P-40C Tomahawk** Plans No. 1143

Size  
**X**

Dwg. No.  
**Curtiss P40C.drw**

Rev  
**A**

Scale: 1:1

Weight: 4.5-5.5lbs

Sheet 4 of 4