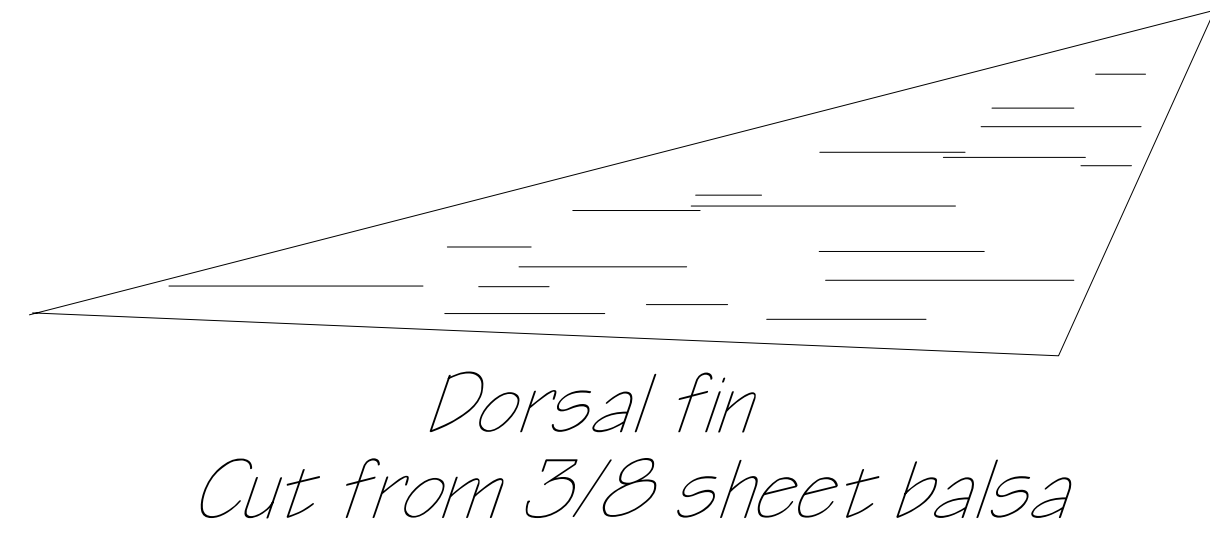
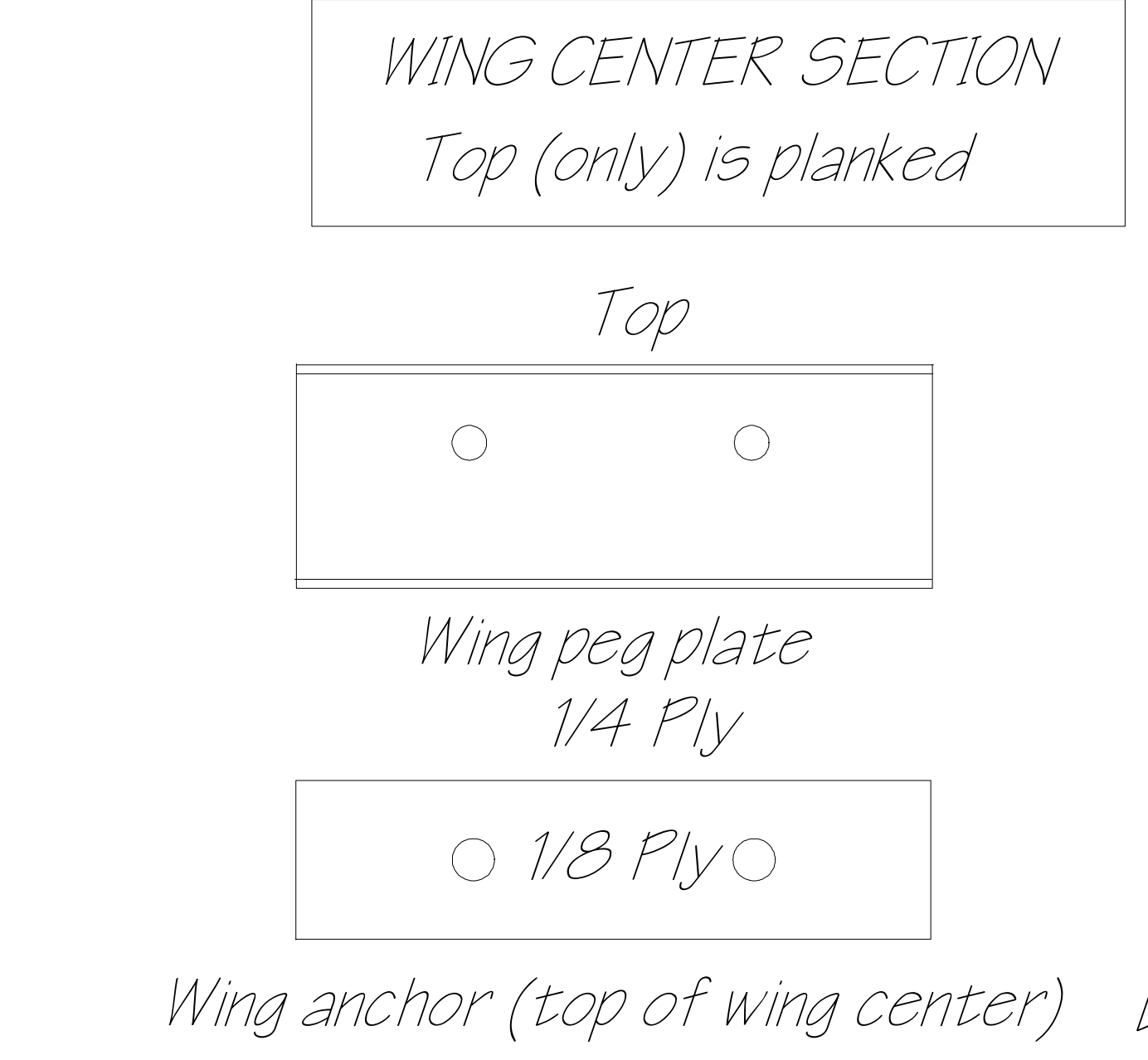
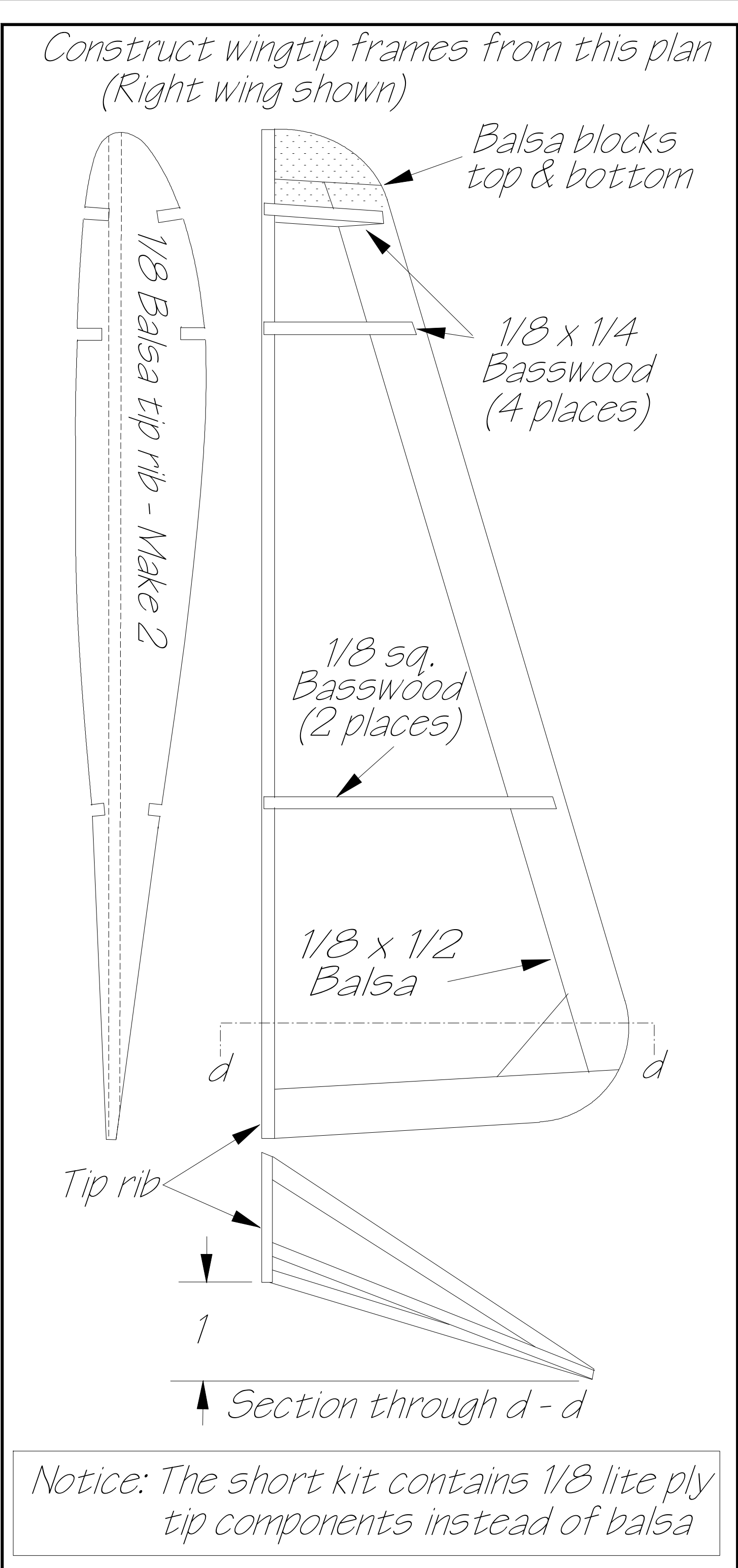
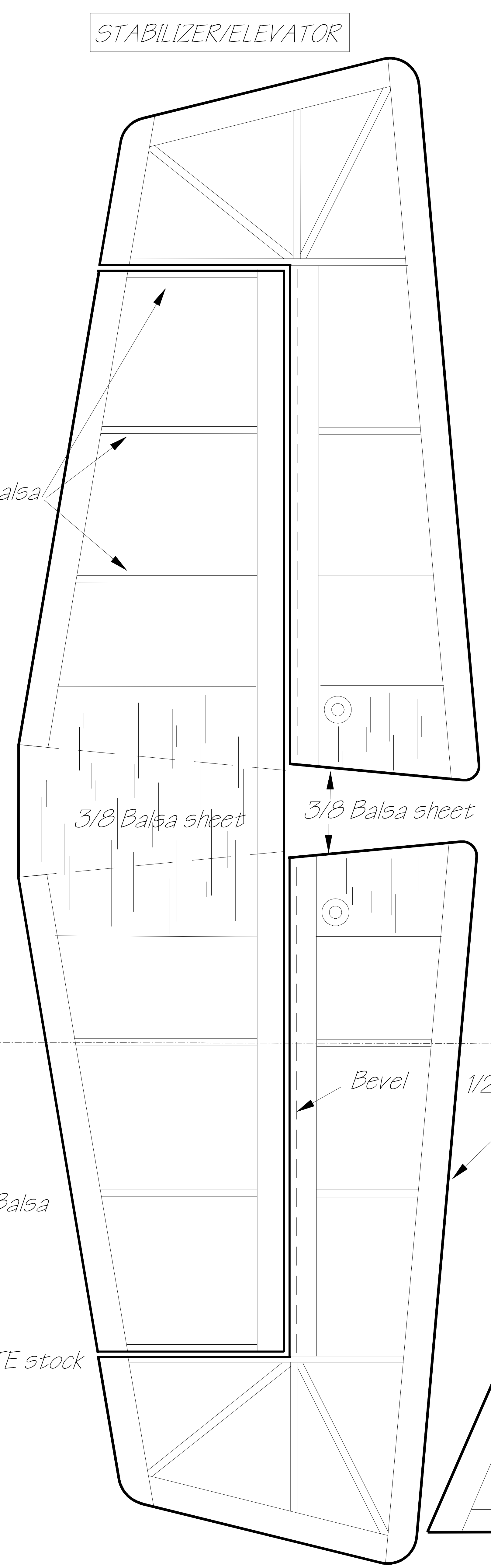
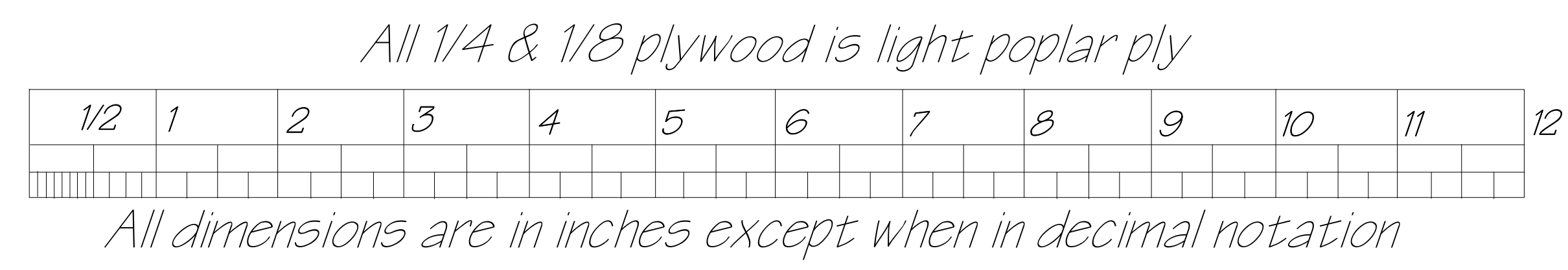
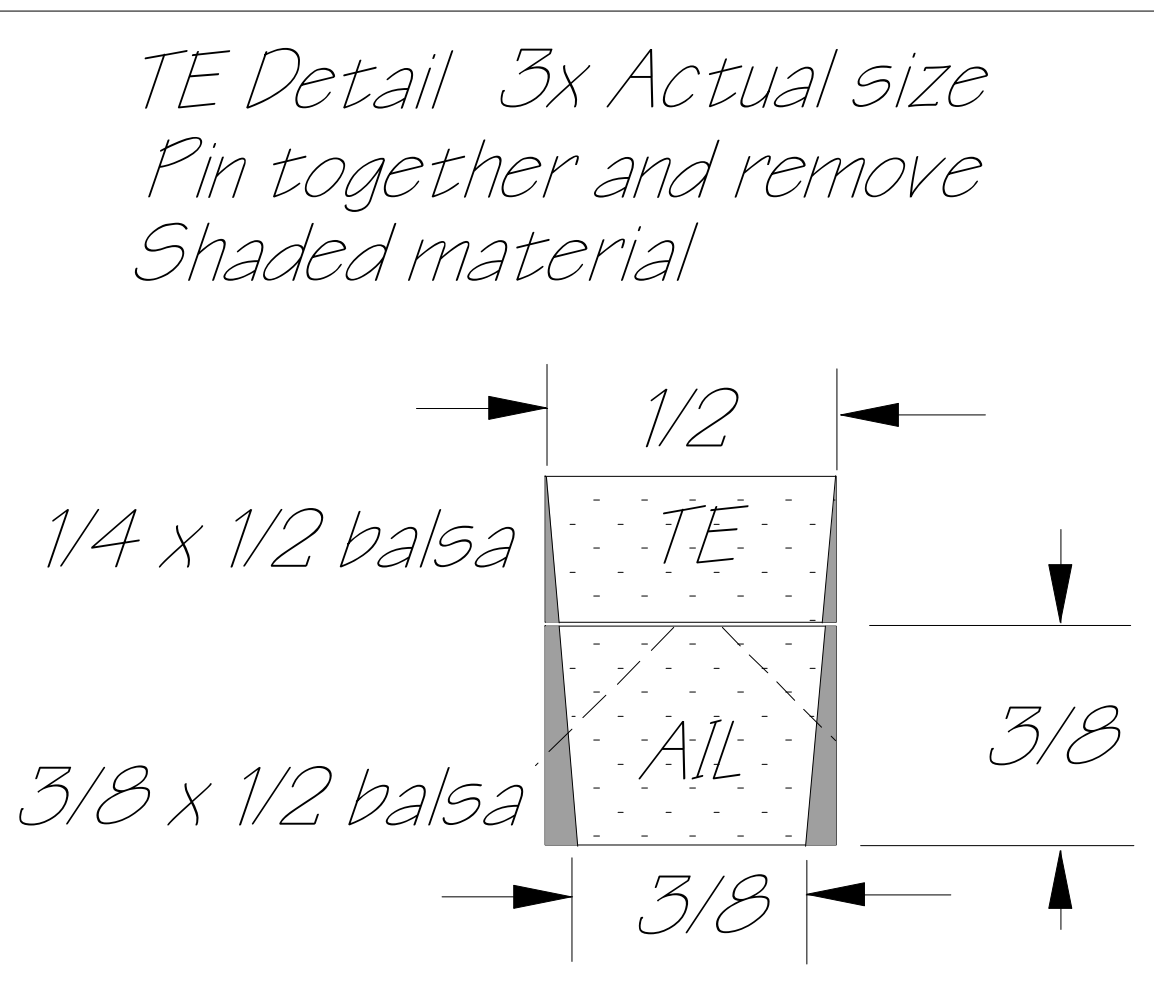
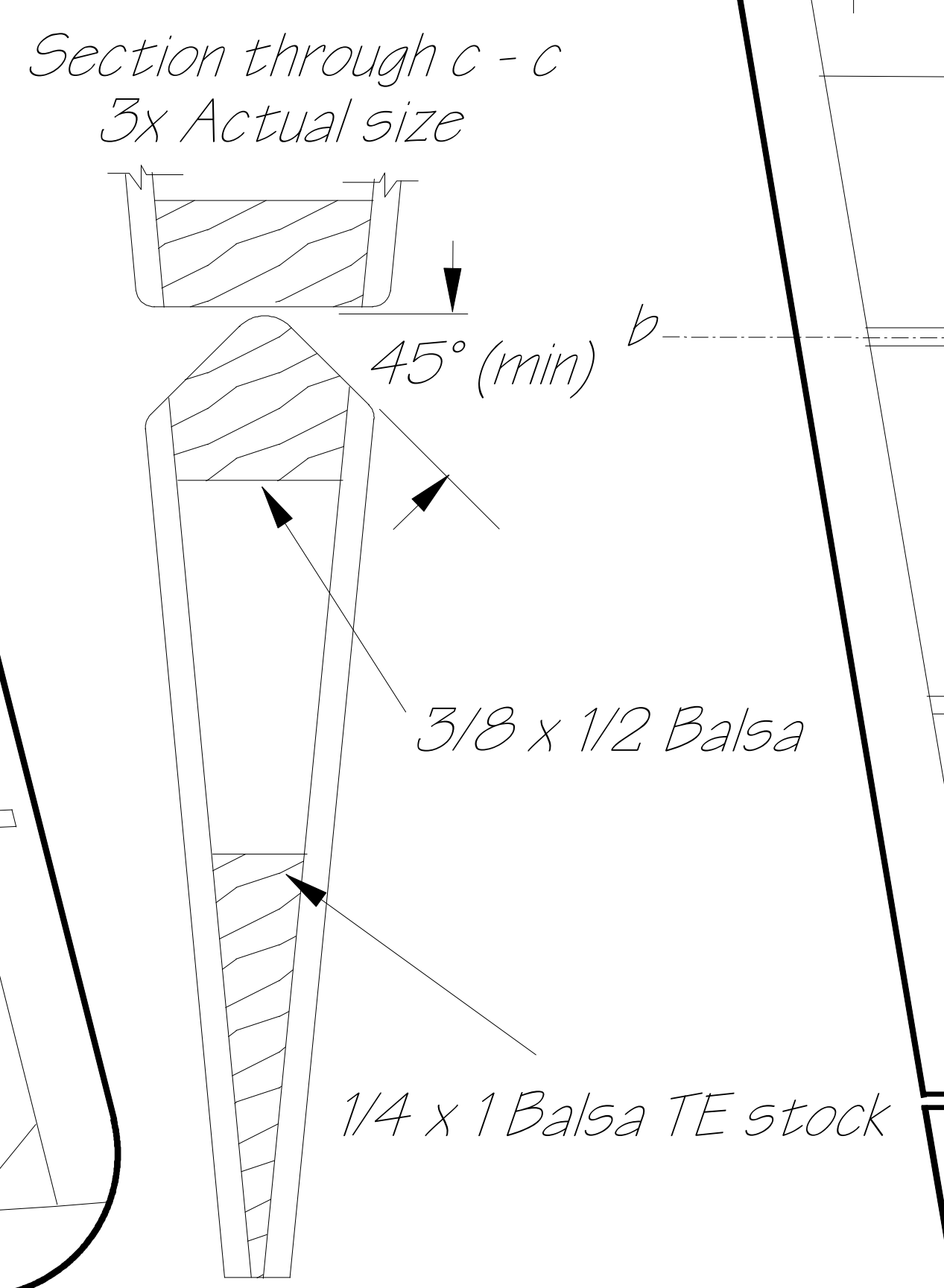


Note: Flaps are bottom hinged
 Flap panel 1/16 Balsa - Make 4
 Aileron panel 1/16 Balsa - Make 4

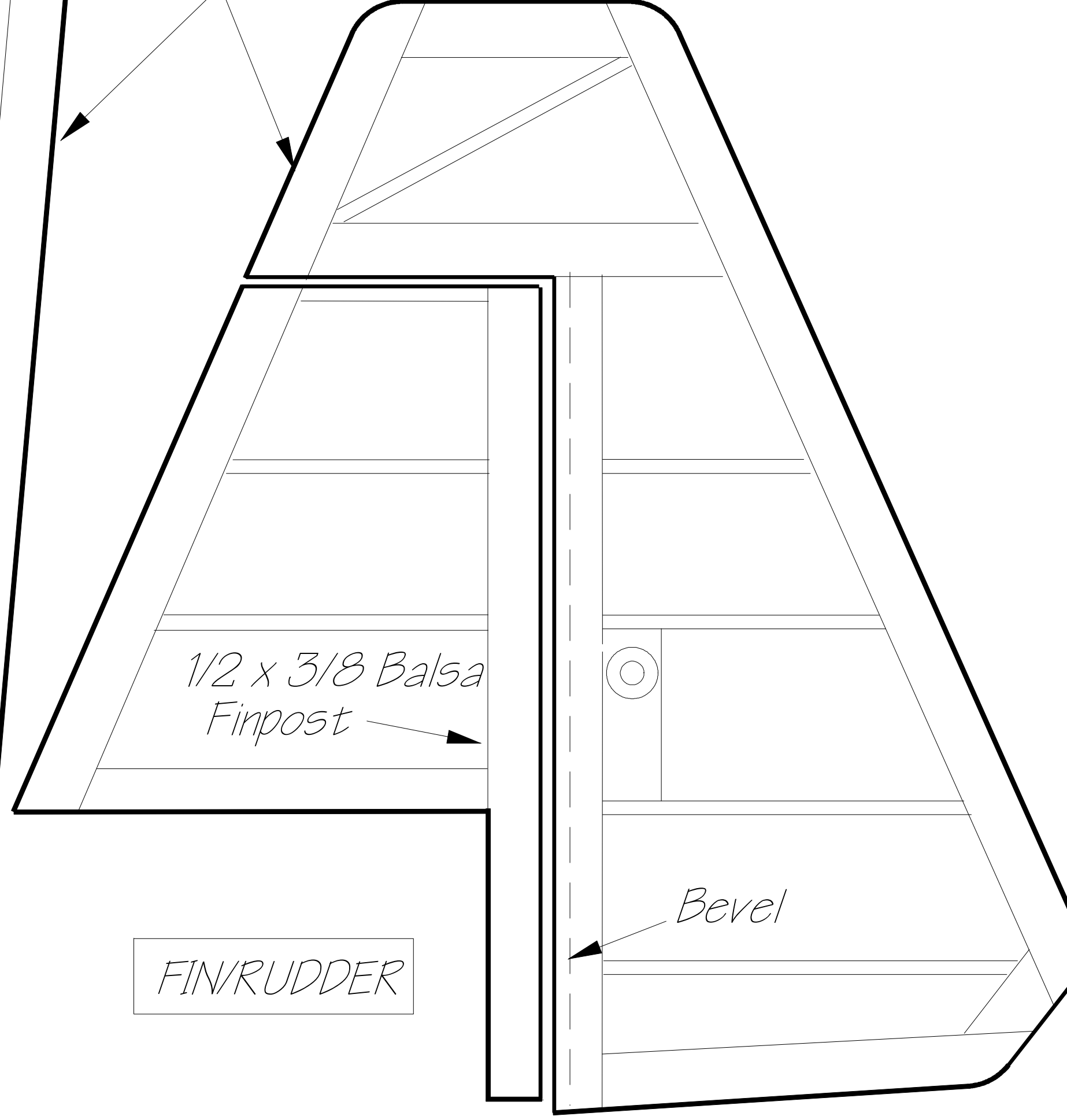
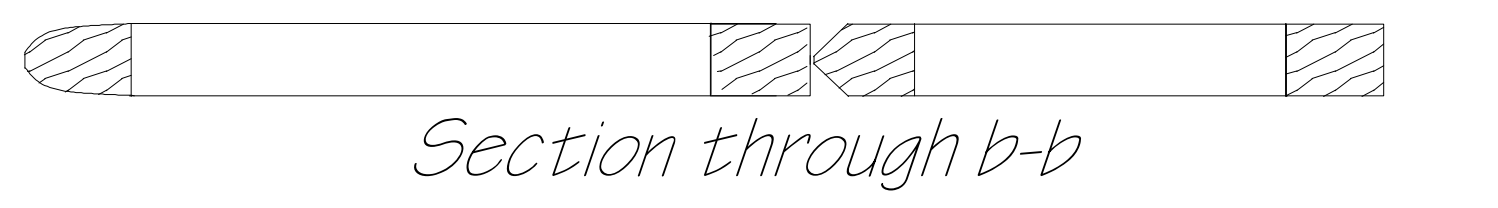


NOTE: WINGS AND WING CENTER SECTION ARE BUILT UPSIDE DOWN OVER PLAN (SEE TEXT)

NOTE: Wingtips are constructed using diagram at upper right. Completed tips are planked with 1/32 balsa, top and bottom



Notice: The short kit contains 1/8 lite ply tip components instead of balsa



Note: empennage is constructed of 3/8 x 1/2 and 1/8 x 3/8 balsa strip stock except as noted